

328C



Owner's Manual Supplement

www.seafoxboats.com

SEA FOX BOAT'S DISCLAIMER

The following Owner's Manual is provided for information and educational purposes only and is not intended to offer or provide legal advice or create a contractual relationship between Sea Fox Boat Company and the owner of any Sea Fox brand vessel. Please beware that as a vessel owner you have non-delegable responsibilities regarding the safety, maintenance, fitness, and operation of your vessel and the extent of such responsibilities is ultimately determined by Federal law and regulations, the general maritime law of the United States, the laws and regulations of the states and territories of the United States, or the laws and regulations of the country where you operate your vessel. To fully understand your responsibilities as a vessel owner, and before operating or letting any third-party operate your vessel, we recommend that you consult the services of a qualified lawyer in admiralty and maritime law.

TABLE OF CONTENTS

Introduction	3	Harness Windlass Panel	21
Specifications	3	Harness Panel Kit	22
Designated Occupant Seating	4	Control Box.	23
Safety Decals.	5	Panel Battery Breaker.	24
Plumbing Schematics	7	Harness ACC w/ Len/ORB Deutsch (P/N 6979)	25
Commander Drains	7	Harness Battery Cable Set EPS (P/N 6980)	26
Commander Livewell A System.	9	Harness Deck (P/N 6985)	27
Commander Livewell B System.	10	U Panel Switch/Harness Ultima (P/N 6997)	28
Commander Air Conditioning System.	11	Panel Box Junction Console (P/N 7137).	29
Commander Fresh Water System	12	Panel Breaker Con w/ Battery Switch (P/N 7138)	30
Commander Fuel System	13	Panel Switch Deutsch (P/N 7139).	31
Commander Bilge System.	14	Panel Switch Key/Remote Battery Helm (P/N 7140)	32
Commander Mister System.	15	Breaker Kit - 60-Amp EPS (P/N 7378)	33
Commander Raw Water System.	16	Head Panel Switch ORB (P/N 6136) – Optional	34
Commander Waste System.	17	Head Panel Switch ORB (P/N 6870).	35
Electrical Schematics	18	Cable AC Set (P/N 7141) – Optional.	36
Twin Engine with 4-Battery Setup and Charger	18	Breaker Assembly - 80-Amp Helm Master (P/N 7379) – Optional	37
Harness & Panel Cooler Slide	19		
Harness JL Stereo	20		

This Page Intentionally Left Blank

INTRODUCTION

Congratulations and Welcome Aboard! With so many boat brands to choose from, we want to congratulate you on your decision to choose Sea Fox Boats. For more than 24 years, Sea Fox offers the finest hand-crafted saltwater boats carefully balanced with the build-quality, features, styling and performance for the fairest price. Our passion for boating is evident in every model we make and we appreciate that you've noticed the Sea Fox difference.

We share your love for the moments spent on the water with friends and family, which is why every Sea Fox boat offers a unique blend of fishing/family options, technologies and innovative features. Your choice of a Sea Fox affirms that you have performed your research and compared the value of your model with the competition.

Whether you are new to the boating lifestyle or an old salt, we ask that **you and all other operators** read the owner's manual, this supplement, and all other literature provided with the boat **before** operating the boat or any equipment. We also recommend that all operators enroll in a boating safety course available online - see References and Contact Information in this section for education resources online.

This supplement contains model-specific information not included with the owner's manual. This manual is not intended to be a replacement for specific product literature provided by engine, accessory or other major equipment manufacturers, but rather to supplement that information.

Because of our philosophy of continuous product improvement, this manual serves as a general guide only, so the specifications and illustrations used may not match the equipment on your boat and are intended only as general reference views.

We welcome you to the Sea Fox family and wish you many years of boating enjoyment!

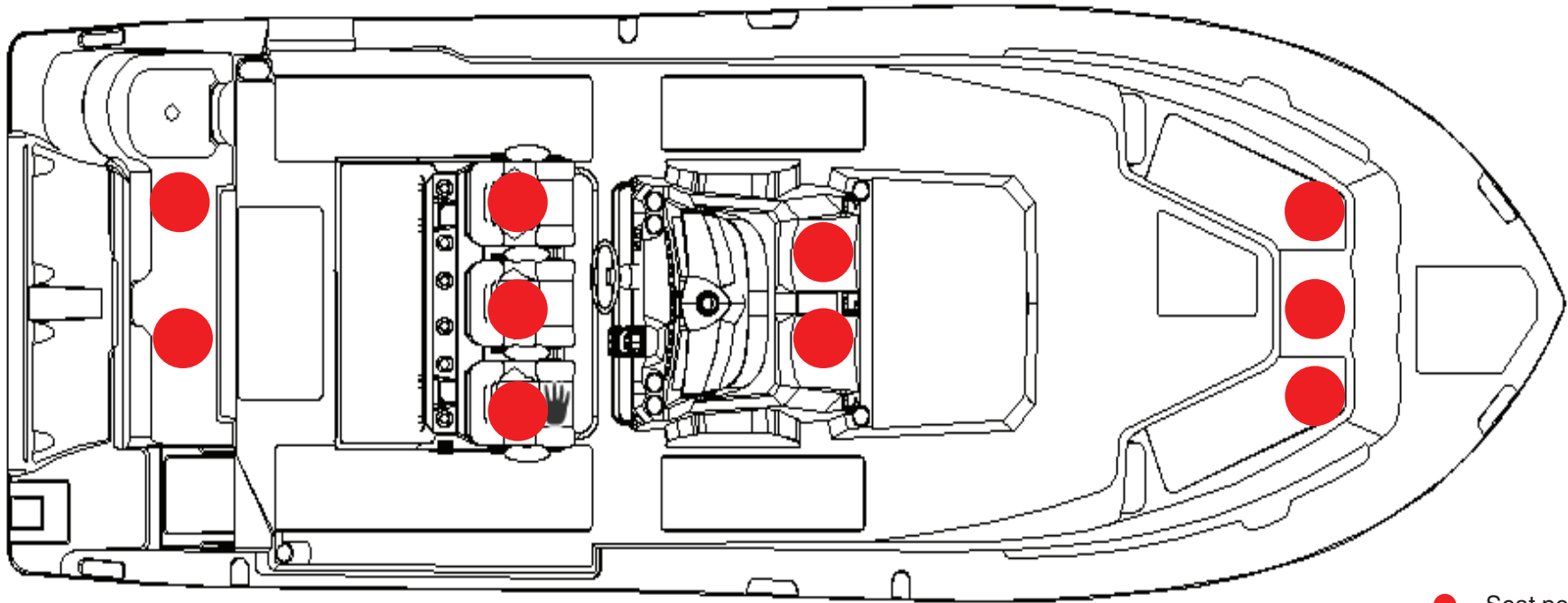
SPECIFICATIONS

Max. Weight Capacity	Yacht Certification
Persons	Yacht Certification
Persons Weight	Yacht Certification
Max. HP	900 hp (671 kw)
L.O.A.	32' (9.75 m)
Beam	10' 8" (3.25 m)
Draft	24 in. (0.61 m)
Height, Keel to Top (Light Folded)	**
Bridge Clearance Hard Top	115 in. (2.92 m)
Max. Weight Boat (w/ Fluids, Largest HP)	14511 lbs (6582 kg)
Fuel Tank Capacity	313 gal (1185 L)
Freshwater Tank Capacity	24 gal (91 L)
Holding Tank Capacity	12 gal (45 L)

* Keel to Top - 135 in. (3.43 m), W/outriggers - 138 in. (3.51 m), W/18" radar - 139 in. (3.53 m)

DESIGNATED OCCUPANT SEATING

Be sure all passengers are properly seated in designated seating positions and not riding on the bow, bow pulpit, deck, gunwale or rear sun deck while underway. Passengers must use hand-holds and use caution when riding in the bow. Move to the aft passenger seats during rough water operation or if visibility is restricted.



● = Seat position

SFOX-0021

SAFETY DECALS

SEAFOX
BOAT WORKS

YACHT CERTIFICATION
THIS BOAT COMPLIES WITH THE U.S. COAST GUARD SAFETY STANDARDS IN EFFECT ON THE DATE OF CERTIFICATION
SEA FOX BOAT COMPANY
MONCK'S CORNER, S.C.

DANGER

Carbon monoxide (CO) can cause brain damage or death.
Engine and generator exhaust contains odorless and colorless carbon monoxide gas.
Carbon monoxide will be around the back of the boat when engines or generators are running.
Move to fresh air, if you feel nausea, headache, dizziness, or drowsiness.

WARNING

CARBON MONOXIDE (CO) CAN CAUSE BRAIN DAMAGE OR DEATH.
-Carbon monoxide can be present in the cabin.
-Signs of carbon monoxide poisoning include nausea, headache, dizziness, drowsiness, and lack of consciousness.
MOVE TO FRESH AIR if anyone shows signs of carbon monoxide poisoning.
USE AVAILABLE HANDRAILS AND HANDHOLDS while moving about the cabin and while the boat is in motion to avoid falling.

WARNING

Failure to follow these warnings could cause severe injury or death.

- WEAR SAFETY LANYARD at all times while operating boat to prevent unusual boat operation.
- NEVER OPERATE WHILE UNDER THE INFLUENCE of drugs or alcohol.
- DO NOT OVERLOAD THE BOAT. ENSURE THAT WEIGHT IS PROPER AND EVENLY DISTRIBUTED fore and aft, and on both sides of the boat to avoid poor handling sudden loss of control, swamping and/or capsizing.
- PASSENGERS SHOULD WEAR U.S. COAST GUARD APPROVED LIFE JACKETS.
- MAKE SURE THAT ALL PASSENGERS ARE PROPERLY SEATED WHILE UNDERWAY. To avoid passengers falling overboard or being ejected from the boat, do not allow passengers to sit on seat backs, gunwales or outboard deck edges while boat is moving.
- REDUCE SPEED BEFORE ATTEMPTING SUDDEN OR SHARP TURNS AND MAINTAIN SAFE SPEEDS for water conditions and environmental at times. Maneuverability at high speeds is limited, and sudden turns may result in loss of control.
- KEEP PROPER LOOKOUT AND SAFE DISTANCE for the conditions at all times to avoid collisions.
- OBEY APPLICABLE NAVIGATION RULES AND BOATING LAWS.
- USE CAUTION AND PROPER LIGHTING during nighttime boating and boating in adverse weather.
- READ THE OWNER'S MANUAL AND COMPLETE THE BOATER'S PRE-OPERATION CHECKLIST prior to boat operation.

WARNING

Operating, servicing and maintaining a recreational marine vessel can expose you to chemicals including engine exhaust, carbon monoxide, phthalates, and lead, which are known to the State of California to cause cancer and birth defects or other reproductive harm. To minimize exposure, avoid breathing exhaust, service your vessel in a well-ventilated area and wear gloves or wash your hands frequently when servicing this vessel. For more information go to www.P65warnings.ca.gov/marine.

WARNING

Moving parts can crush and cut. Keep hands clear while operating bracket.

WARNING

Moving parts can crush and cut. Keep hands clear while operating bracket.

WARNING

Moving parts can crush and cut. Keep hands clear while operating bracket.

AIR CONDITIONER
U36086-01

**NO WOOD!
NO ROT!**

Manufactured by
SEAFOX
BOAT WORKS

DANGER

ROTATING PROPELLER CAN CAUSE SERIOUS INJURY OR DEATH. SHUT OFF MOTOR WHEN NEAR PERSONS IN WATER.

DANGER

ROTATING PROPELLER CAN CAUSE SERIOUS INJURY OR DEATH. SHUT OFF MOTOR WHEN NEAR PERSONS IN WATER.

DANGER

ROTATING PROPELLER CAN CAUSE SERIOUS INJURY OR DEATH. SHUT OFF MOTOR WHEN NEAR PERSONS IN WATER.

WARNING

Failure to follow these warnings could cause SERIOUS INJURY OR DEATH.

- REMAIN PROPERLY SEATED AND HOLD ON to available handrails while boat is moving to avoid falling overboard or being ejected from the boat. Do not sit on seat backs, gunwales or outboard deck edges.
- WEAR U.S. COAST GUARD APPROVED LIFE JACKETS.
- DO NOT OVERLOAD THE BOAT. OCCUPANTS AND GEAR MUST BE PROPERLY AND EVENLY DISTRIBUTED fore and aft, and on both sides of the boat. Improper loading and/or overloading may result in poor handling, sudden loss of control, swamping and/or capsizing.
- REFER TO AND OBEY THE DESIGNATED OCCUPANT SEATING POSITIONS that are indicated by the manufacturer for your specific model.
- OBEY THE OPERATOR at all times.
- DO NOT RESTRICT THE OPERATOR'S VISION.
- DO NOT DEPART THE VESSEL without informing the operator.

DISCHARGE OF OIL PROHIBITED

THE FEDERAL WATER POLLUTION CONTROL ACT PROHIBITS THE DISCHARGE OF OIL OR OILY WASTE INTO OR UPON THE NAVIGABLE WATERS OF THE UNITED STATES, OR THE WATERS OF THE CONTIGUOUS ZONE, OR WHICH MAY AFFECT NATURAL RESOURCES BELONGING TO, APPERTAINING TO, OR UNDER THE EXCLUSIVE MANAGEMENT AUTHORITY OF THE UNITED STATES, IF SUCH DISCHARGE CAUSES A FILM OR DISCOLORATION OF THE SURFACE OF THE WATER OR CAUSES A SLUDGE OR EMULSION BENEATH THE SURFACE OF THE WATER. VIOLATORS ARE SUBJECT TO SUBSTANTIAL CIVIL PENALTIES AND/OR CRIMINAL SANCTIONS INCLUDING FINES AND IMPRISONMENT.

NON POTABLE WATER

NON POTABLE WATER

NOTICE

THIS BOAT IS EQUIPPED WITH AN OPTIONAL DIRECT OVERBOARD DISCHARGE VALVE. DISCHARGING OF SEWAGE DIRECTLY OVERBOARD IS FOR USE WHERE APPROVED ONLY.

INVERTER CHARGER -A/C

BATTERY CHARGER

RAW WATER

FRESH WATER

WARNING

Leaking fuel is a fire and explosion hazard.
Avoid serious injury or death from fire or explosion from leaking fuel. Inspect system for leaks at least once a year.

WARNING

CONTENTS CAN BE UNDER PRESSURE. AVOID SERIOUS INJURY OR DEATH FROM FIRE OR EXPLOSION. OPEN SLOWLY IN WELL VENTILATED AREA. NO SMOKING OR OPEN FLAMES.

GAS / PETROL ONLY

NOTICE

SHUT OFF VALVE(S) LOCATED BEHIND ACCESS PANEL. CLOSE VALVE(S) WHEN NOT IN USE.

NOTICE

SHUT OFF VALVE(S) LOCATED BEHIND ACCESS PANEL. CLOSE VALVE(S) WHEN NOT IN USE.

WARNING

Failure to follow these warnings could cause SERIOUS INJURY OR DEATH.

- REMAIN PROPERLY SEATED AND HOLD ON to available handrails while boat is moving to avoid falling overboard or being ejected from the boat. Do not sit on seat backs, gunwales or outboard deck edges.
- WEAR U.S. COAST GUARD APPROVED LIFE JACKETS.
- DO NOT OVERLOAD THE BOAT. OCCUPANTS AND GEAR MUST BE PROPERLY AND EVENLY DISTRIBUTED fore and aft, and on both sides of the boat. Improper loading and/or overloading may result in poor handling, sudden loss of control, swamping and/or capsizing.
- REFER TO AND OBEY THE DESIGNATED OCCUPANT SEATING POSITIONS that are indicated by the manufacturer for your specific model.
- OBEY THE OPERATOR at all times.
- DO NOT RESTRICT THE OPERATOR'S VISION.
- DO NOT DEPART THE VESSEL without informing the operator.

WARNING

Rotating propeller may cause serious injury or death. Shut off engine when near persons in the water.

Carbon monoxide (CO) can cause brain damage or death. Engine and generator exhaust contains odorless and colorless carbon monoxide gas. Signs of carbon monoxide poisoning include nausea, headache, dizziness, drowsiness, and lack of consciousness. Get fresh air if anyone shows signs of carbon monoxide poisoning. See Owner's Manual for information regarding carbon monoxide poisoning.

Leaking fuel is a fire and explosion hazard. Avoid serious injury or death from fire or explosion from leaking fuel. Inspect system for leaks at least once a year.

SEA FOX BOAT COMPANY
MEETS U.S. EPA EVAP STANDARDS USING CERTIFIED COMPONENTS

It is illegal for any vessel to dump plastic ANYWHERE in the ocean or navigable waters of the United States. Annex V of MARPOL TREATY is an International Law for a cleaner, safer marine environment. Violation of these requirements is a Class D Felony and may result in a civil penalty, up to \$25,000 fine and imprisonment.

U.S. lakes, rivers, bays or sounds and 3 miles from shore	3 to 12 miles	12 to 25 miles	Outside 25 miles
ILLEGAL TO DUMP: Plastic and Garbage	ILLEGAL TO DUMP: Plastic	ILLEGAL TO DUMP: Plastic	ILLEGAL TO DUMP: Plastic
Paper Metal Rags Glass Food	Dunnage, lining and packing materials that float; also if not ground to less than one inch Paper Crockery Rags Metal Glass Food	Dunnage, lining and packing materials that float.	

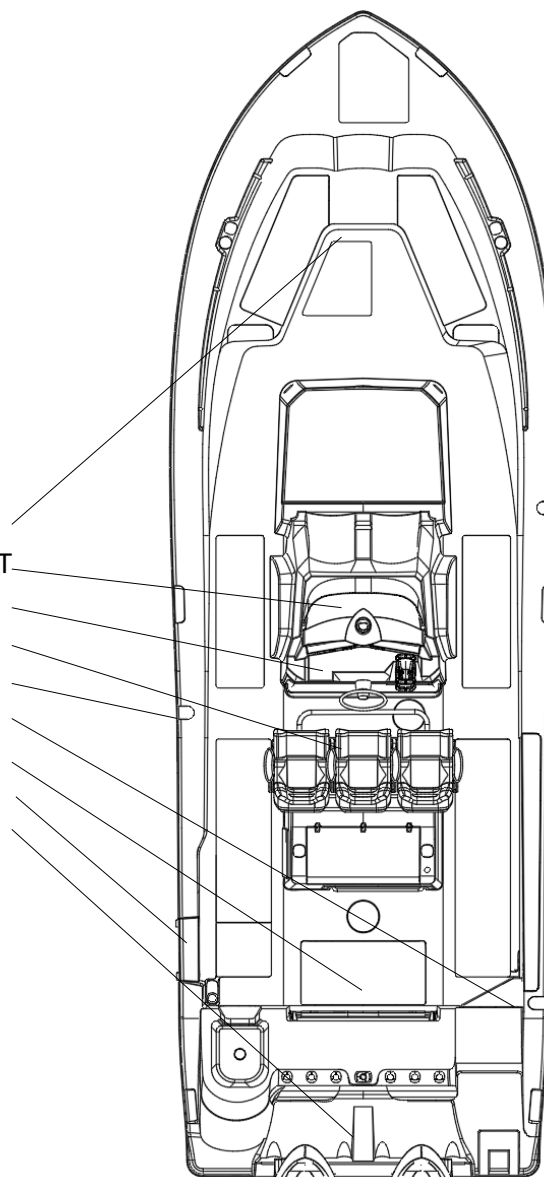
Regional state and local regulations may further restrict the disposal of garbage. The discharge of all garbage into the Great Lakes or their connecting or tributary waters is prohibited.

WARNING

PINCH POINT
Watch your hands and fingers when opening and closing cover.

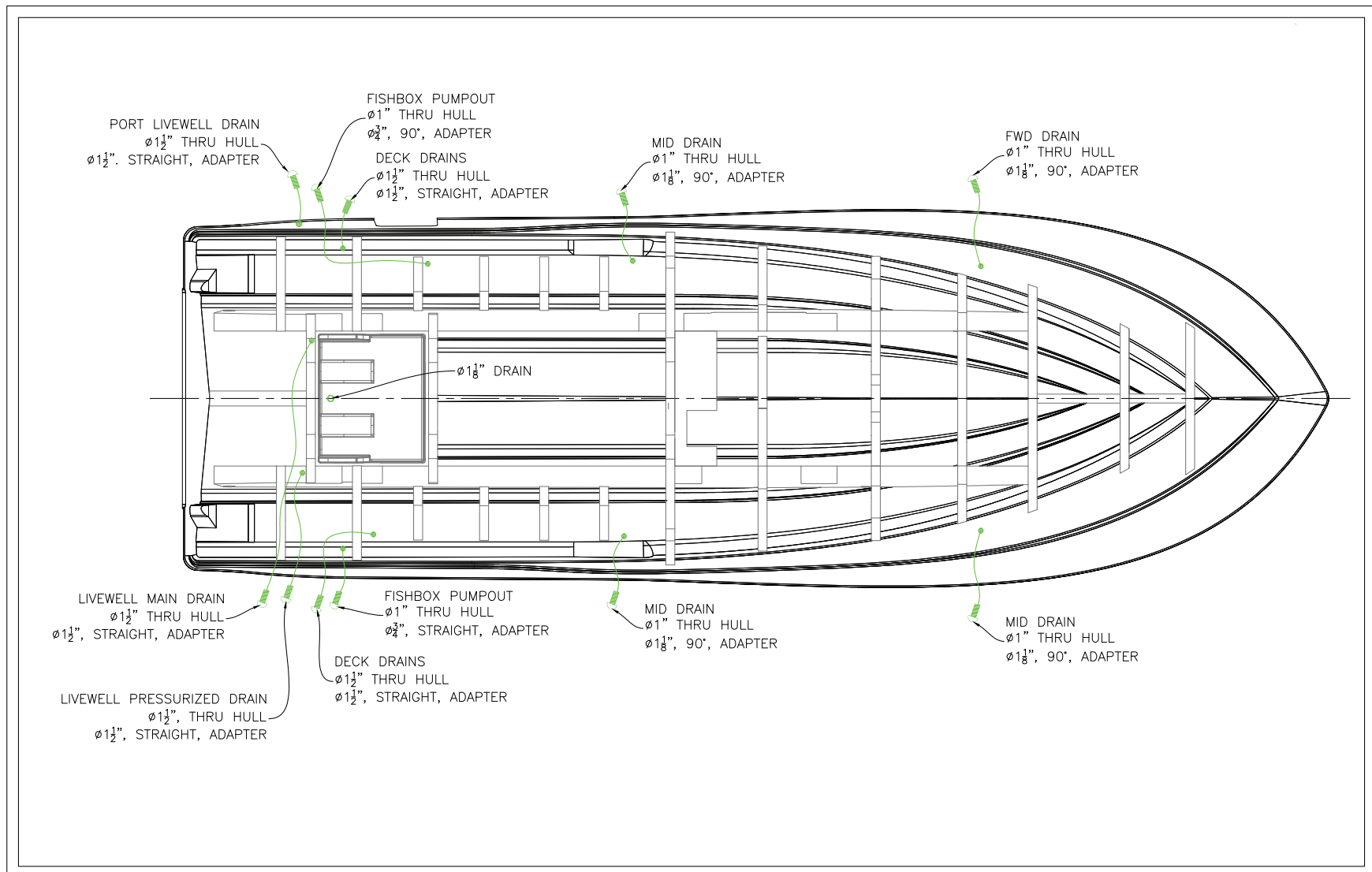
AVOID PERSONAL INJURY SECURE GATE/DOOR WHEN BOAT IS UNDERWAY. ENSURE LADDER IS SECURED TO DECK PRIOR TO USING IF EQUIPPED.

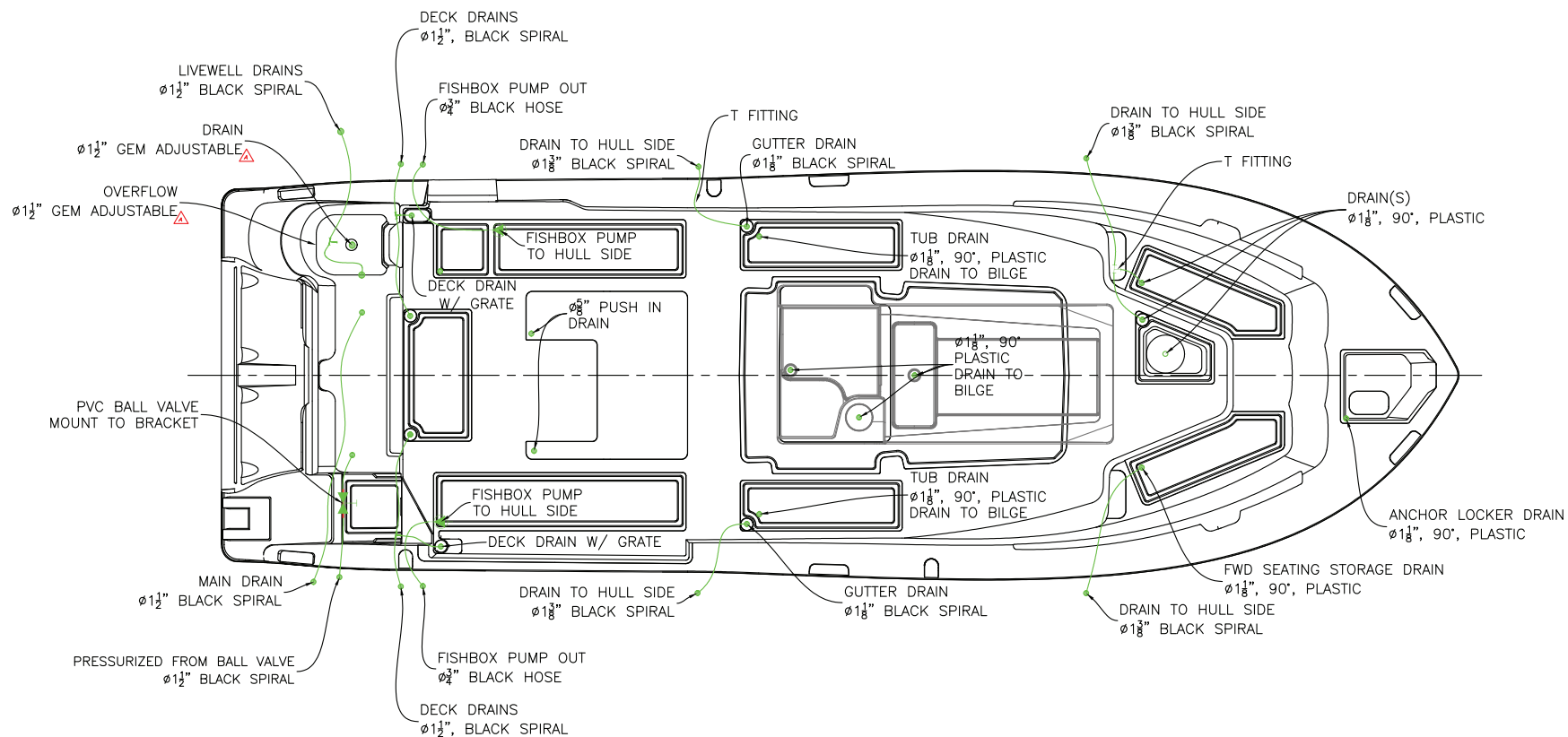
- 1= COCKPIT FRONT
- 2= HEAD COMPARTMENT
- 3= CONSOLE HELM
- 4= LEAN POST POD
- 5= FUEL FILL
- 6= TRANSOM GATE
- 7= COCKPIT AFT
- 8= DIVE DOOR
- 9= TRANSOM



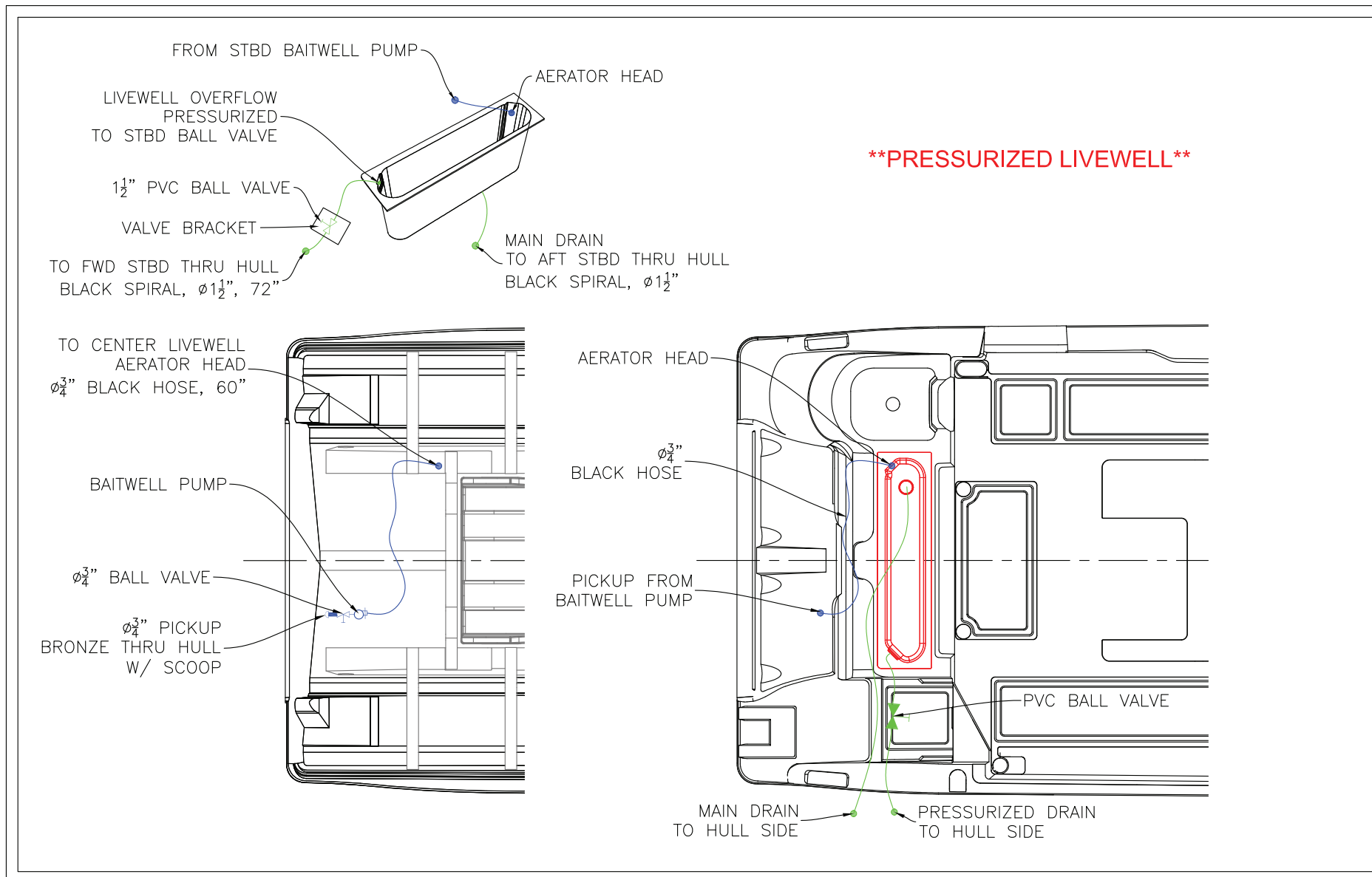
PLUMBING SCHEMATICS

COMMANDER DRAINS

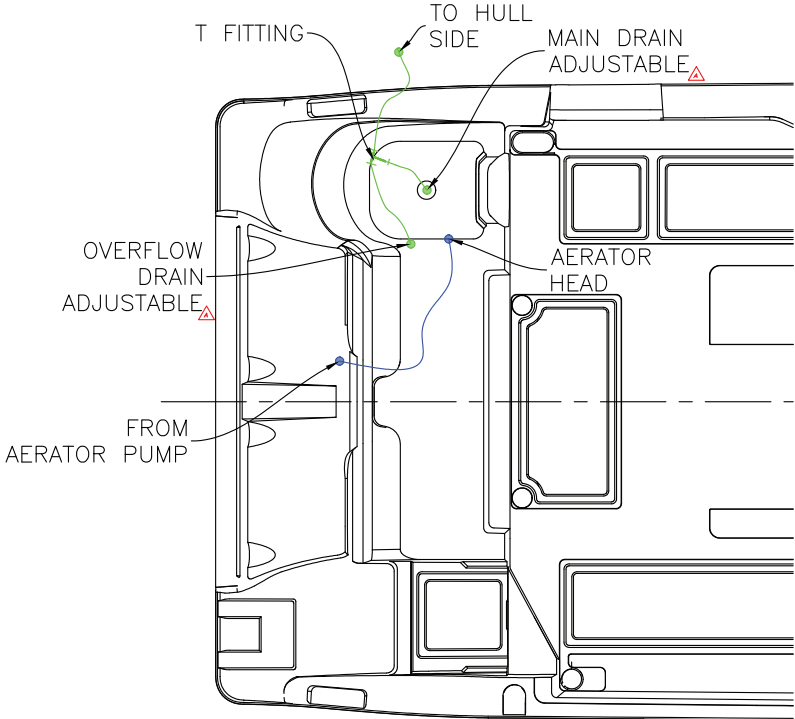
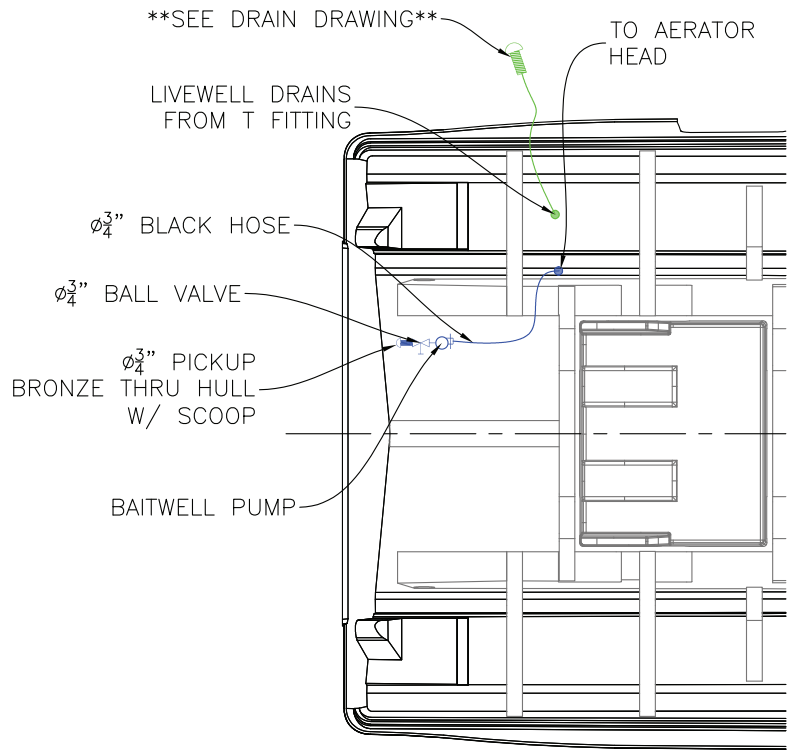




COMMANDER LIVEWELL A SYSTEM

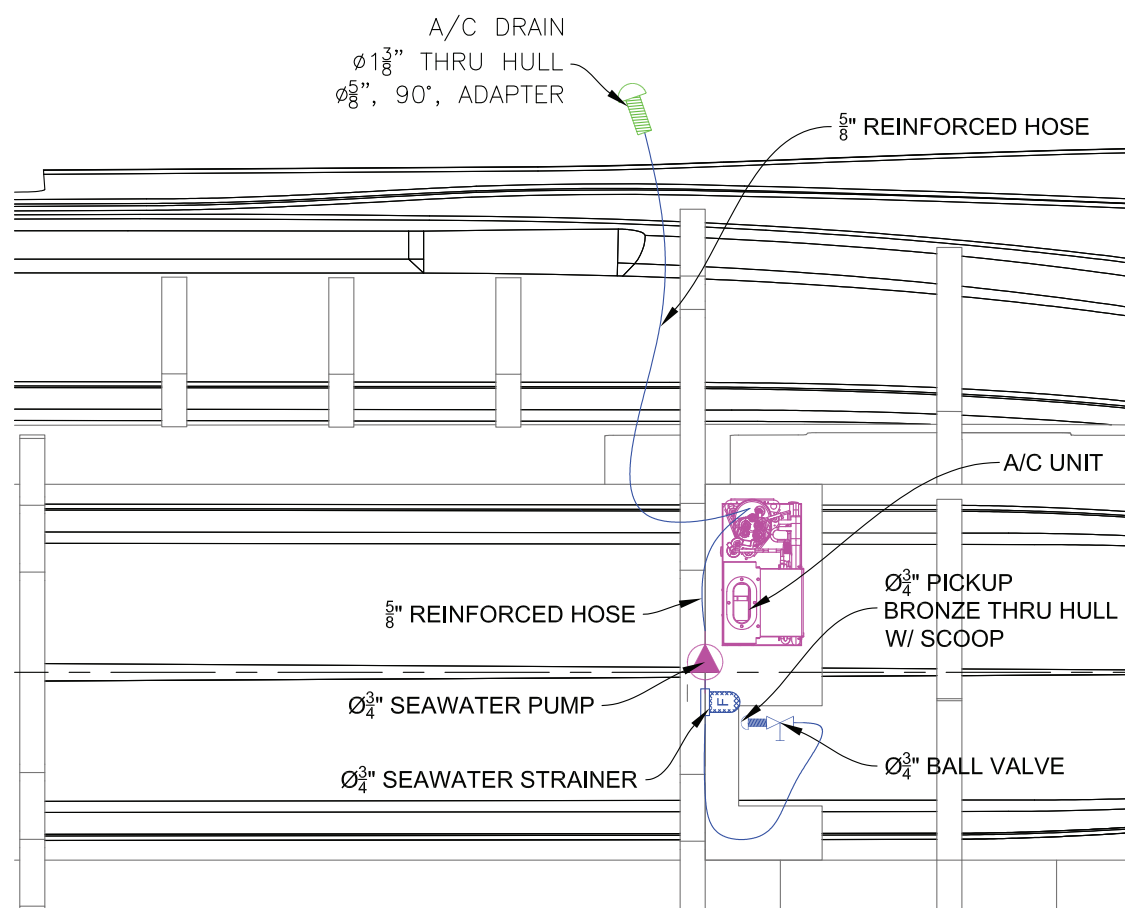


COMMANDER LIVEWELL B SYSTEM

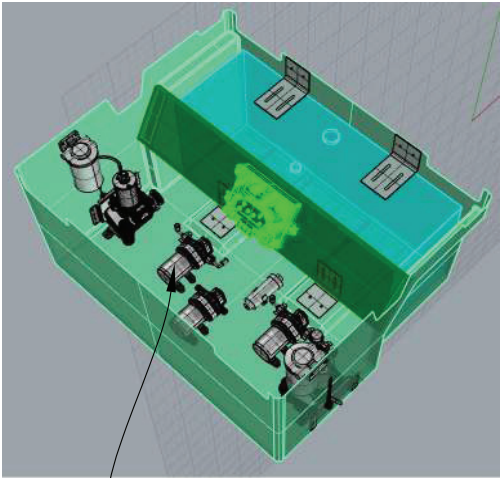


****AQUARIUM LIVEWELL****

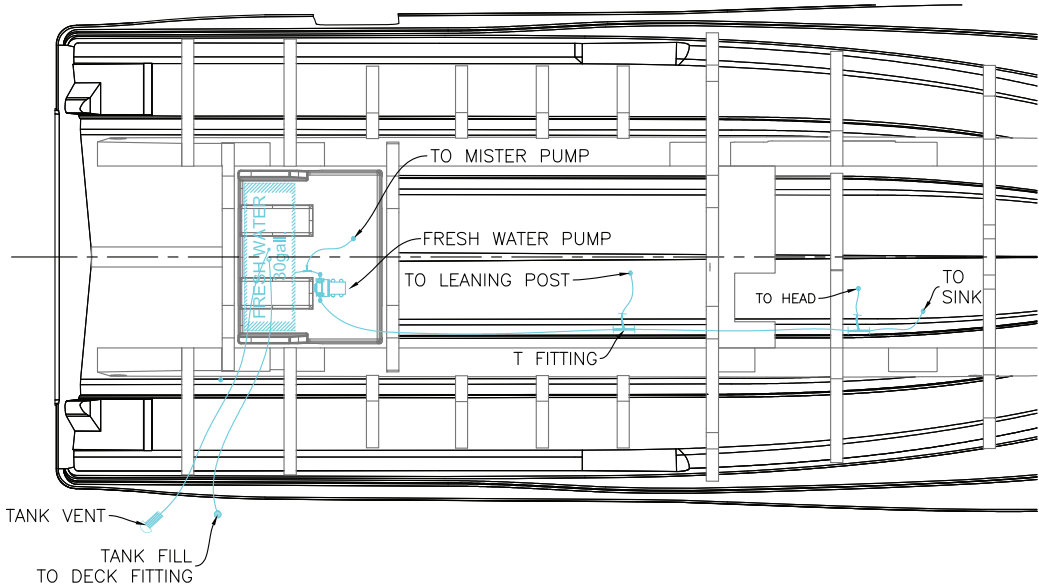
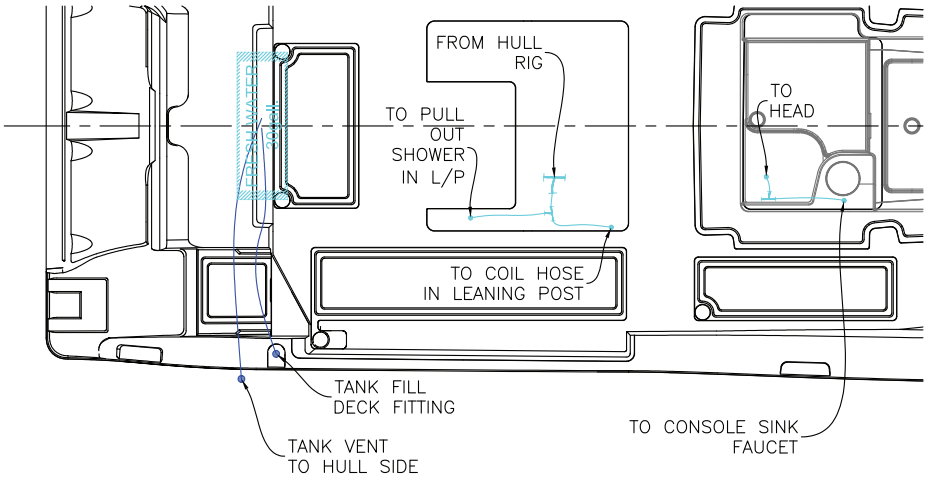
COMMANDER AIR CONDITIONING SYSTEM



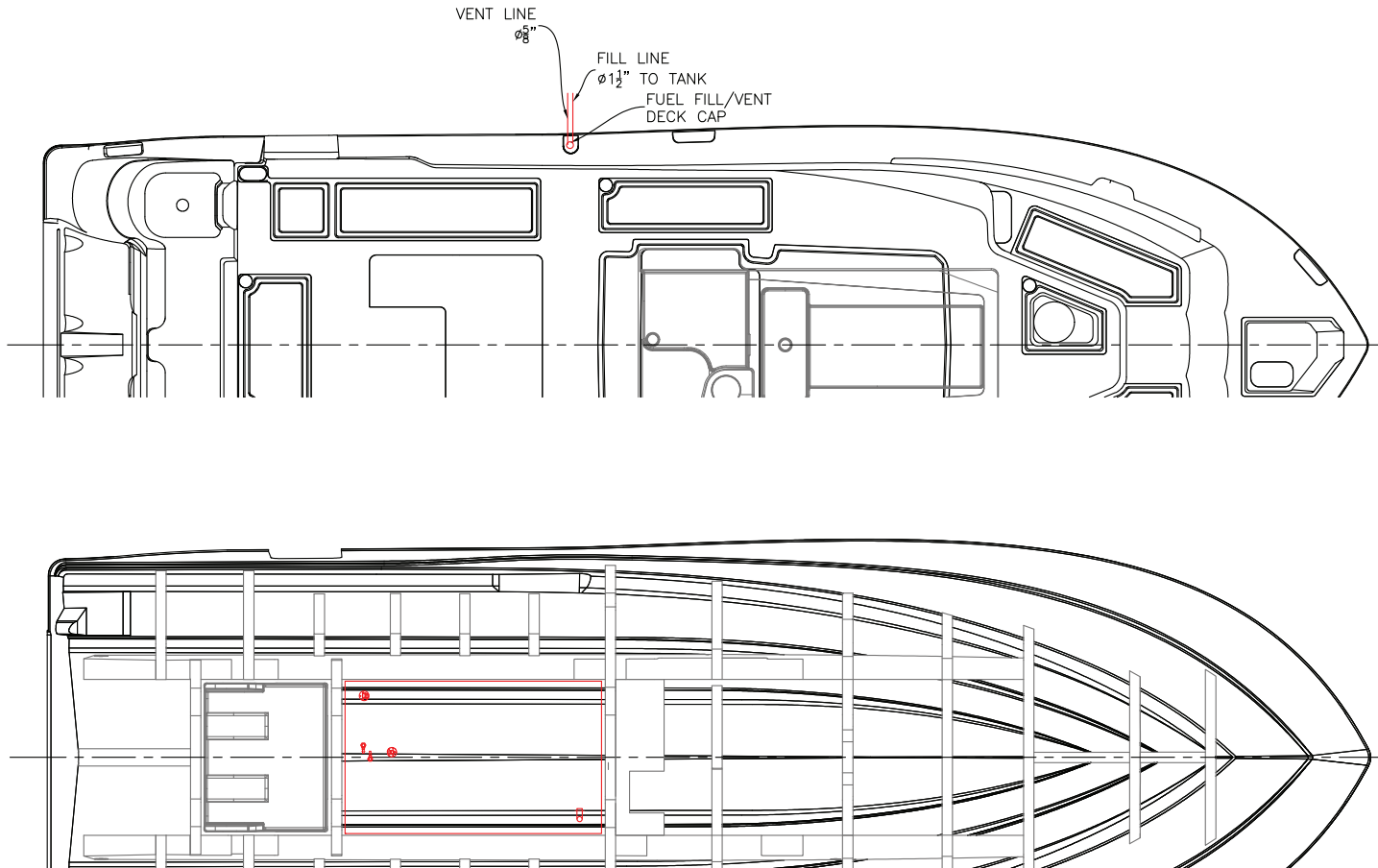
COMMANDER FRESH WATER SYSTEM



FRESH WATER



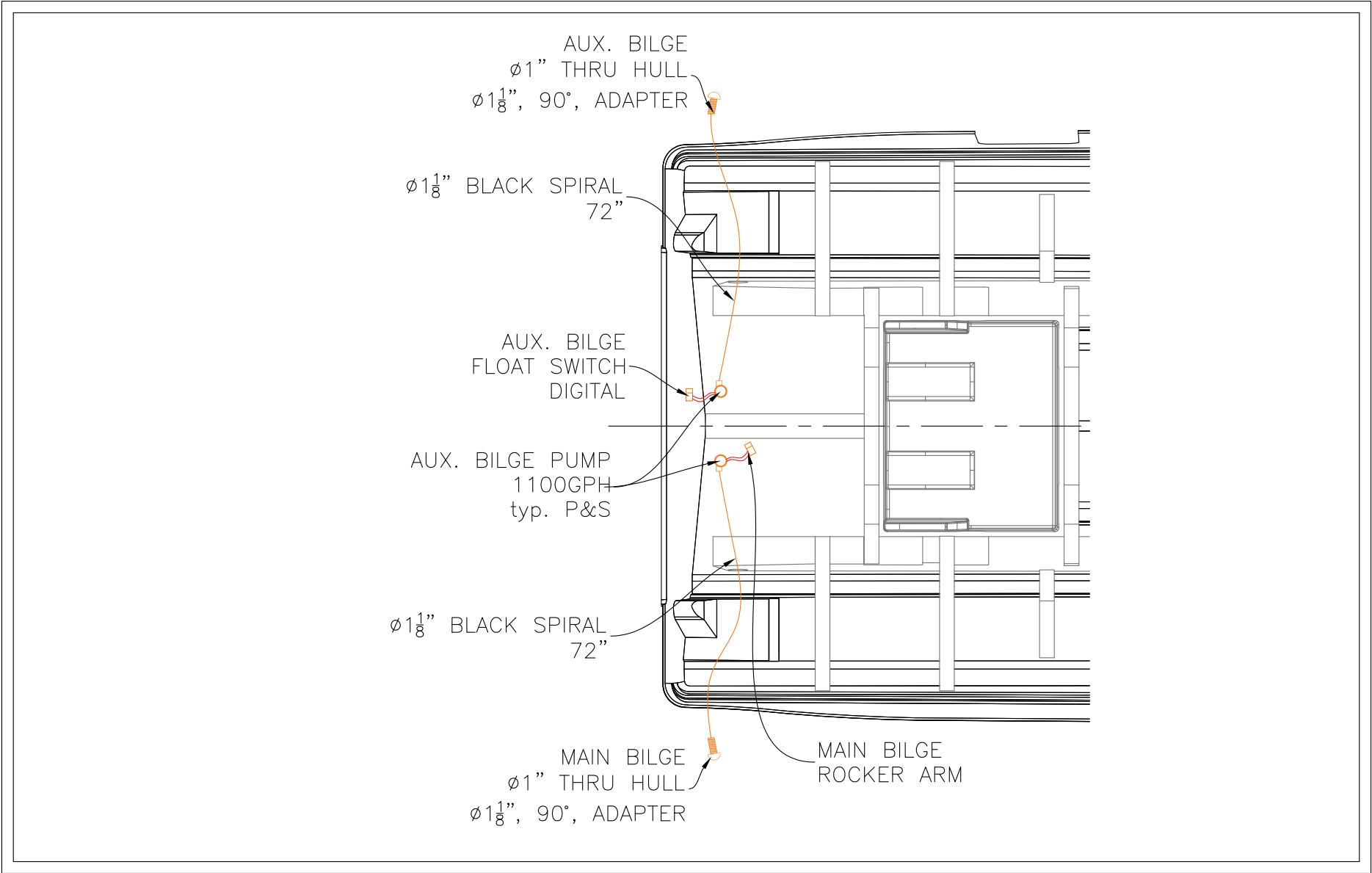
COMMANDER FUEL SYSTEM



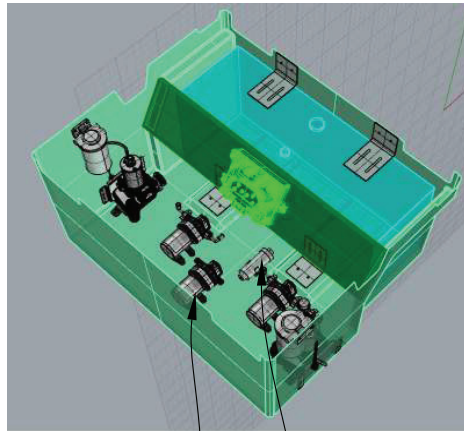


BOAT WORKS

COMMANDER BILGE SYSTEM

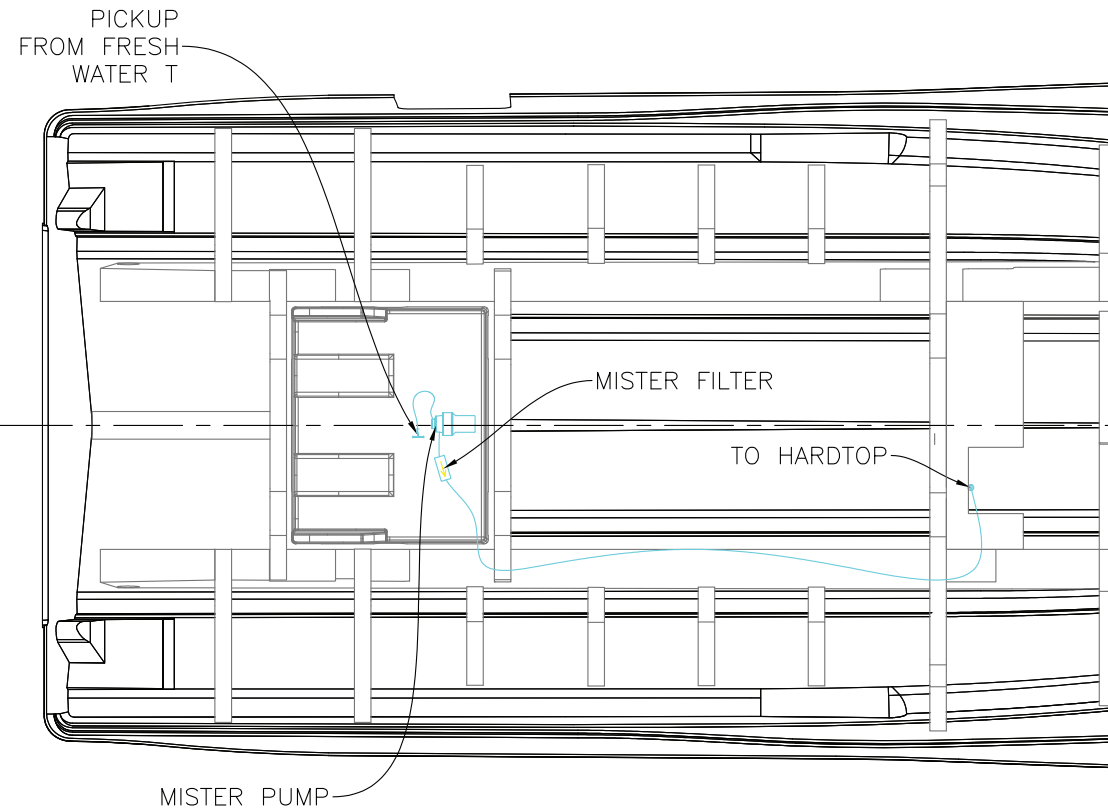


COMMANDER MISTER SYSTEM

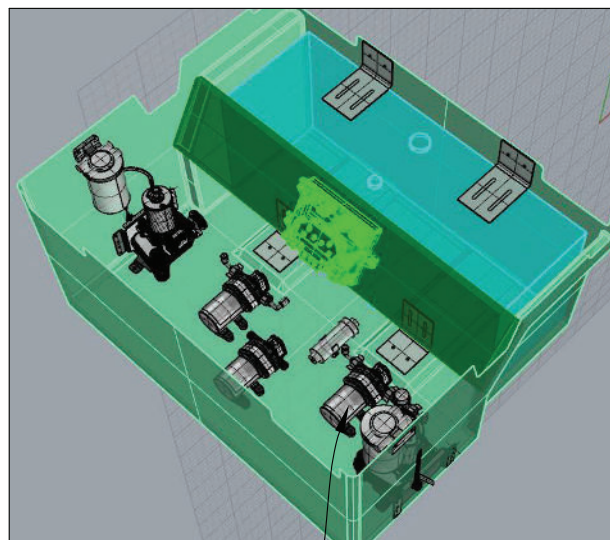


MISTER
PUMP

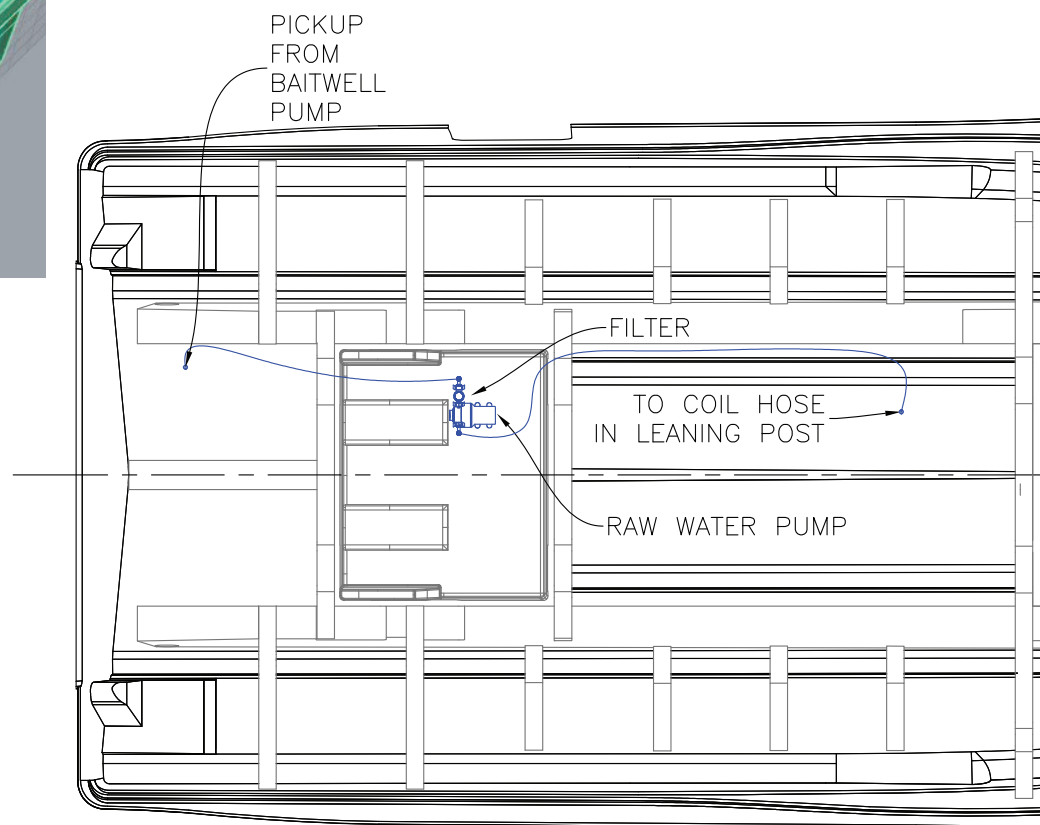
FILTER



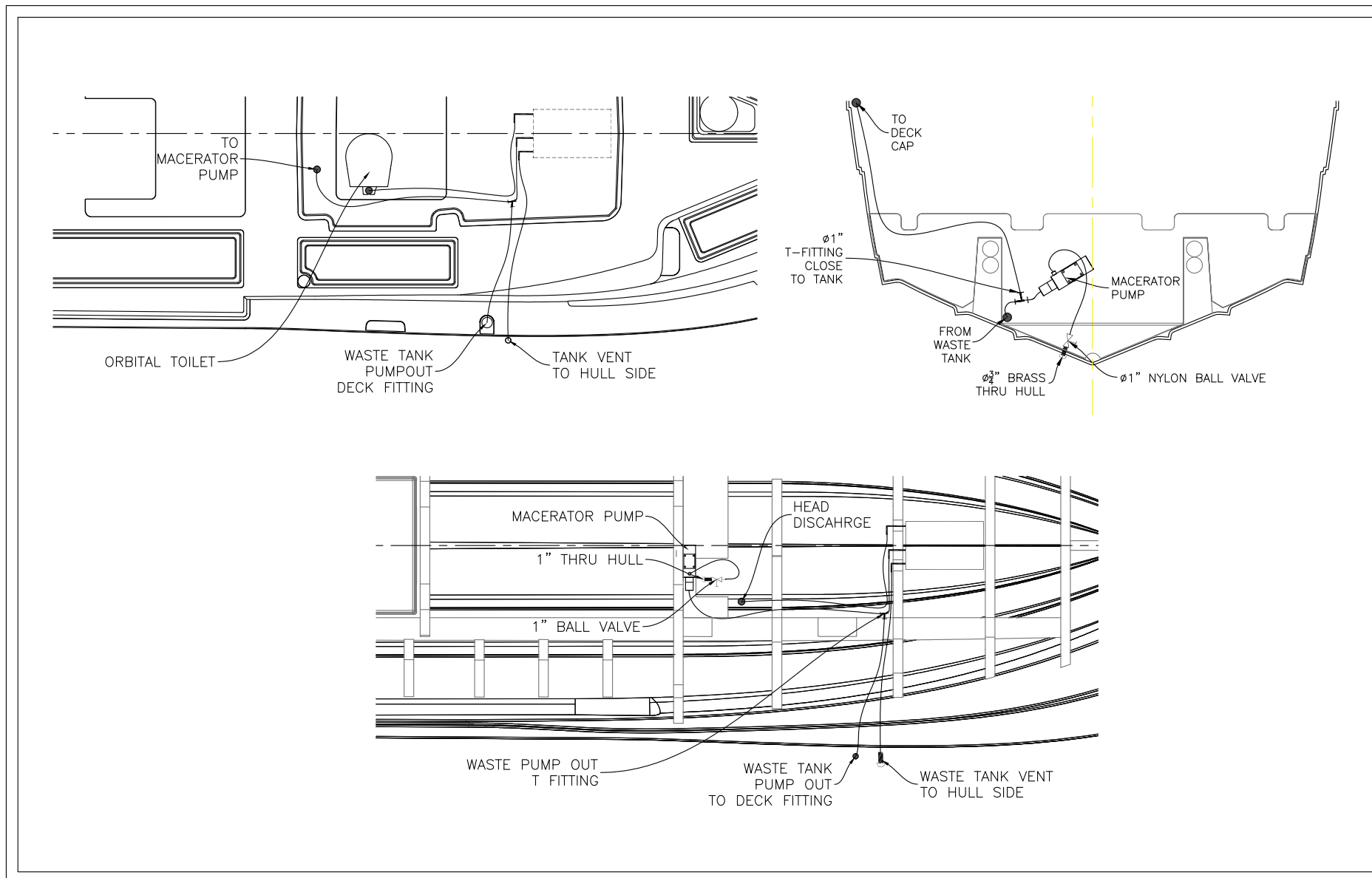
COMMANDER RAW WATER SYSTEM



RAW WATER

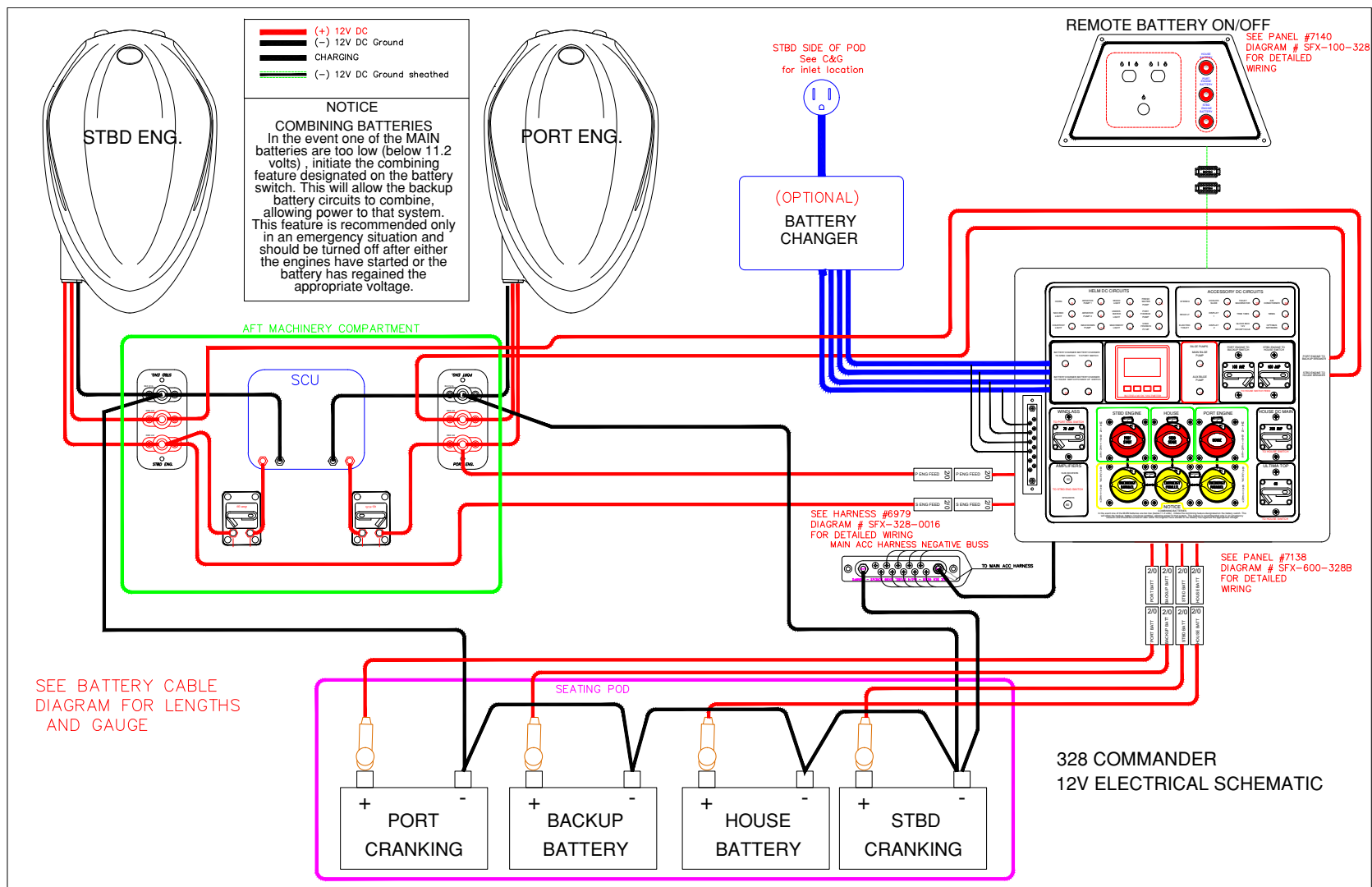


COMMANDER WASTE SYSTEM

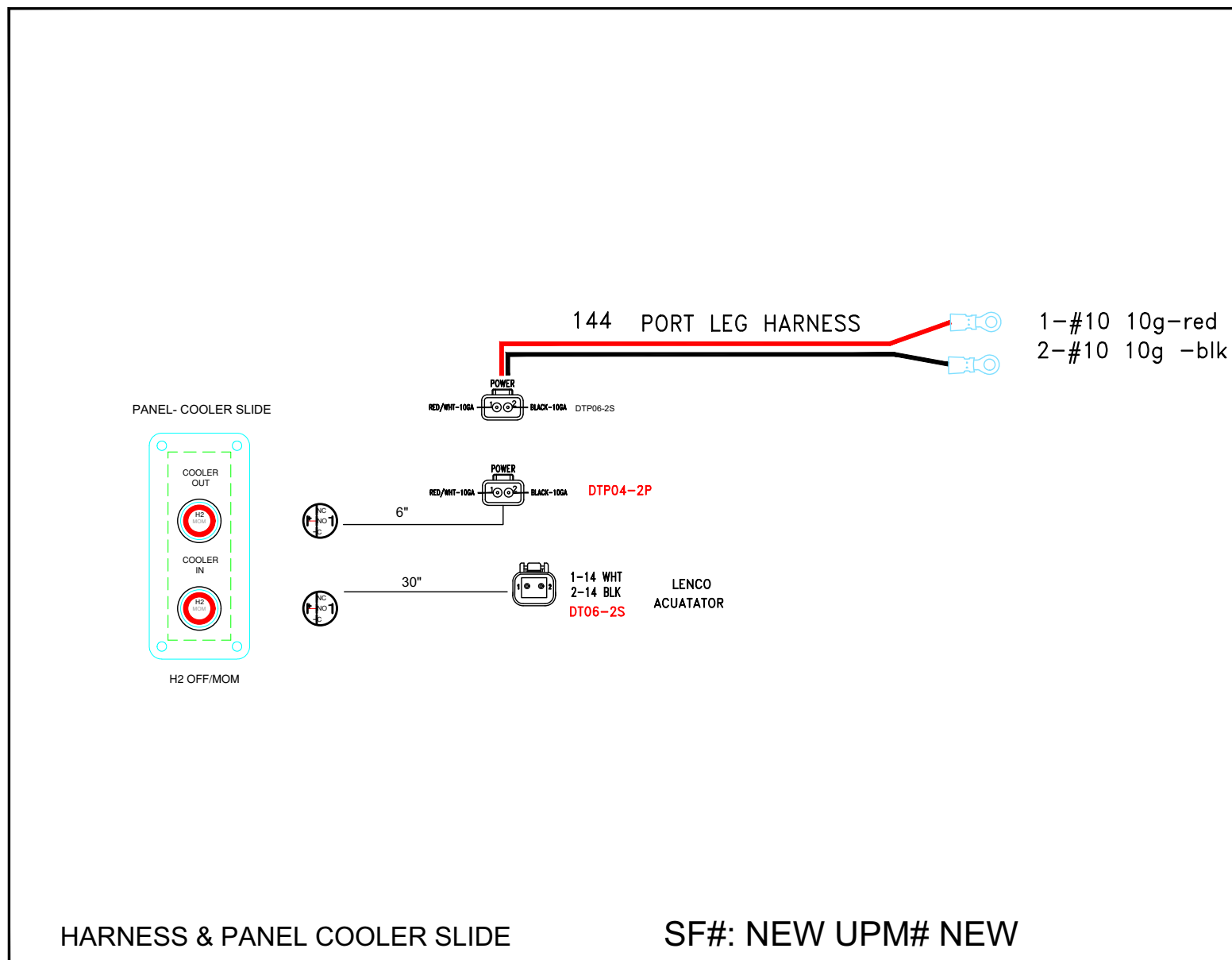


ELECTRICAL SCHEMATICS

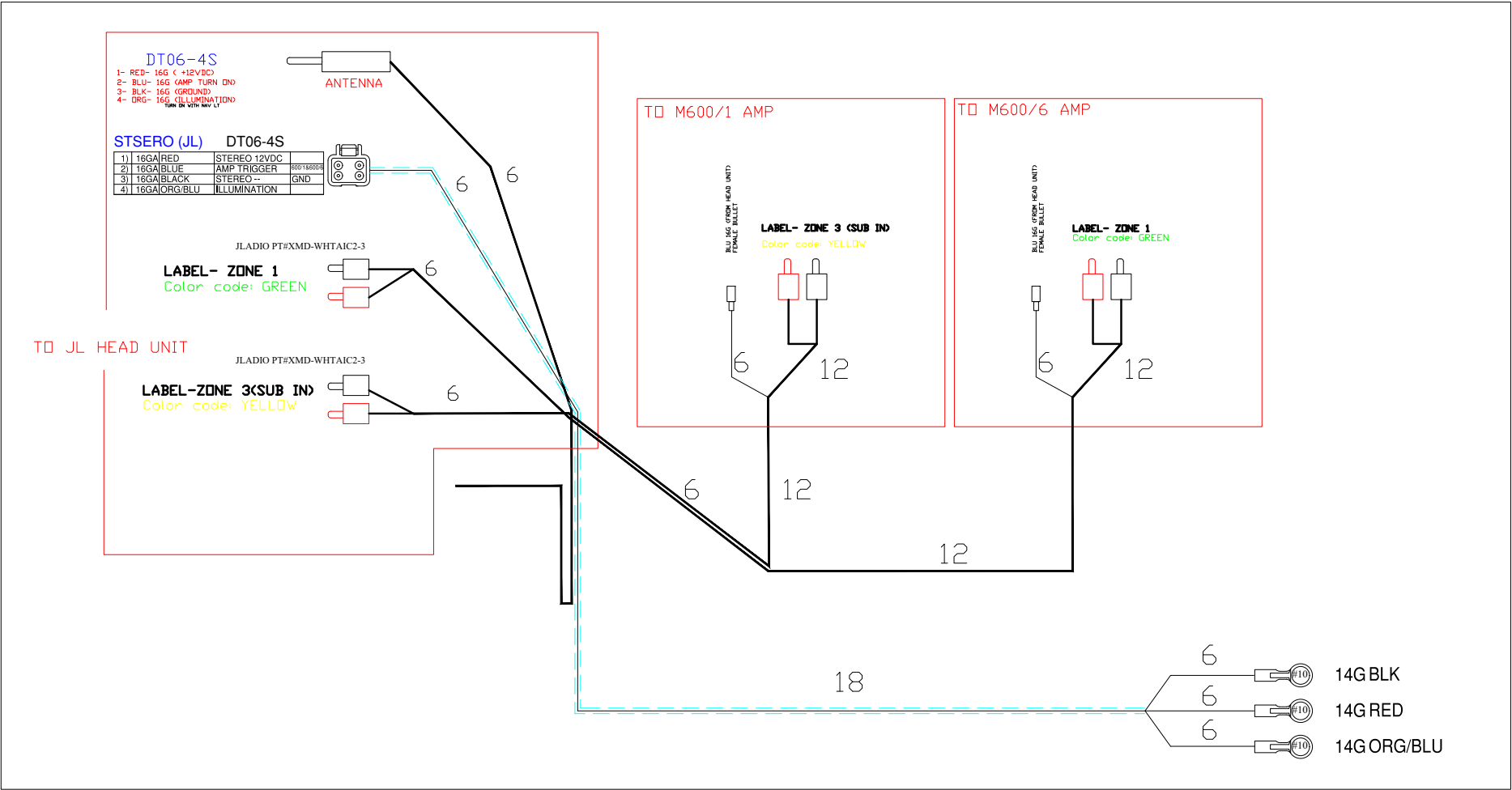
TWIN ENGINE WITH 4-BATTERY SETUP AND CHARGER



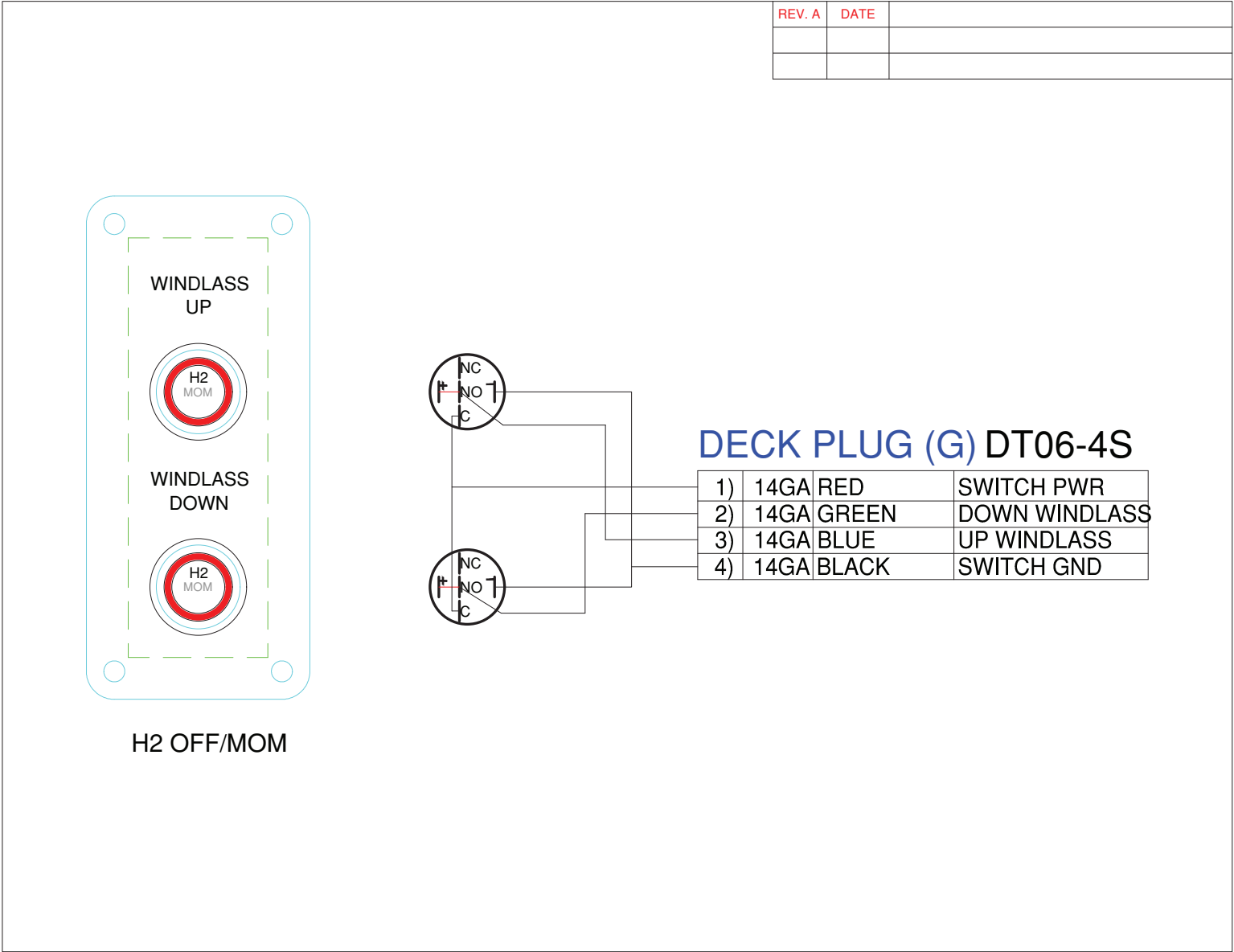
HARNESS & PANEL COOLER SLIDE



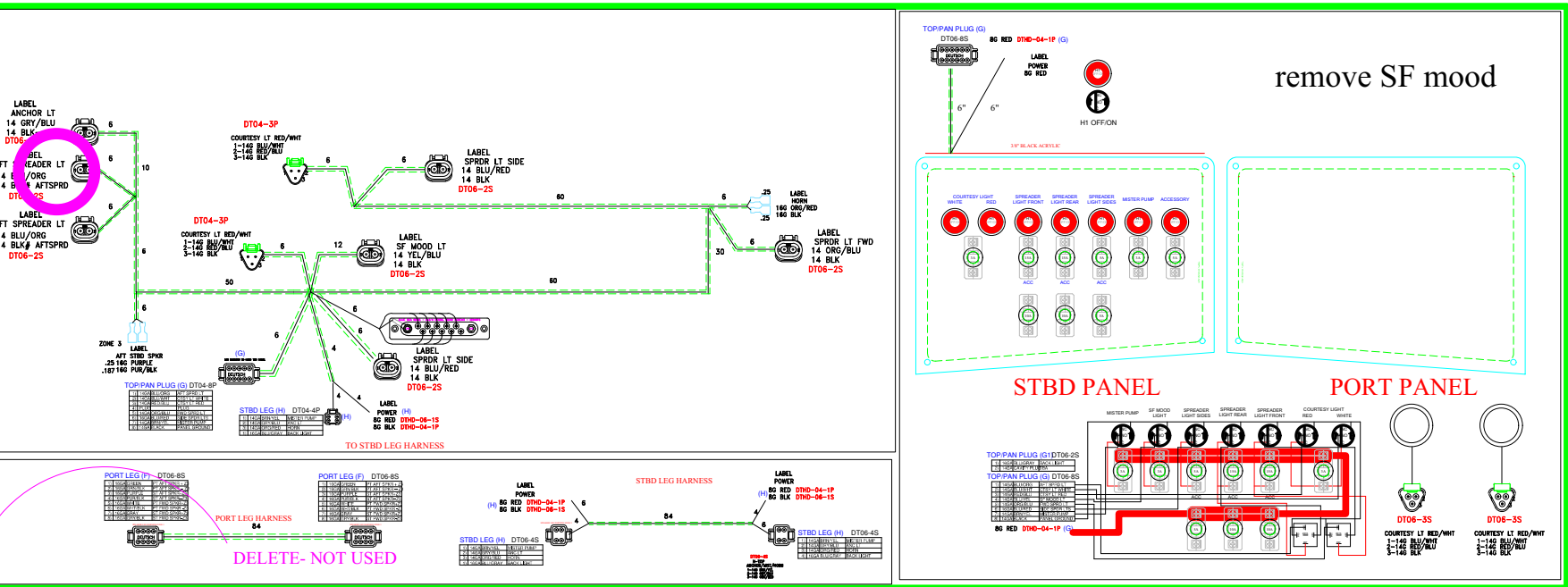
HARNESS JL STEREO



HARNESS WINDLASS PANEL



HARNESS/ PANEL KIT 328

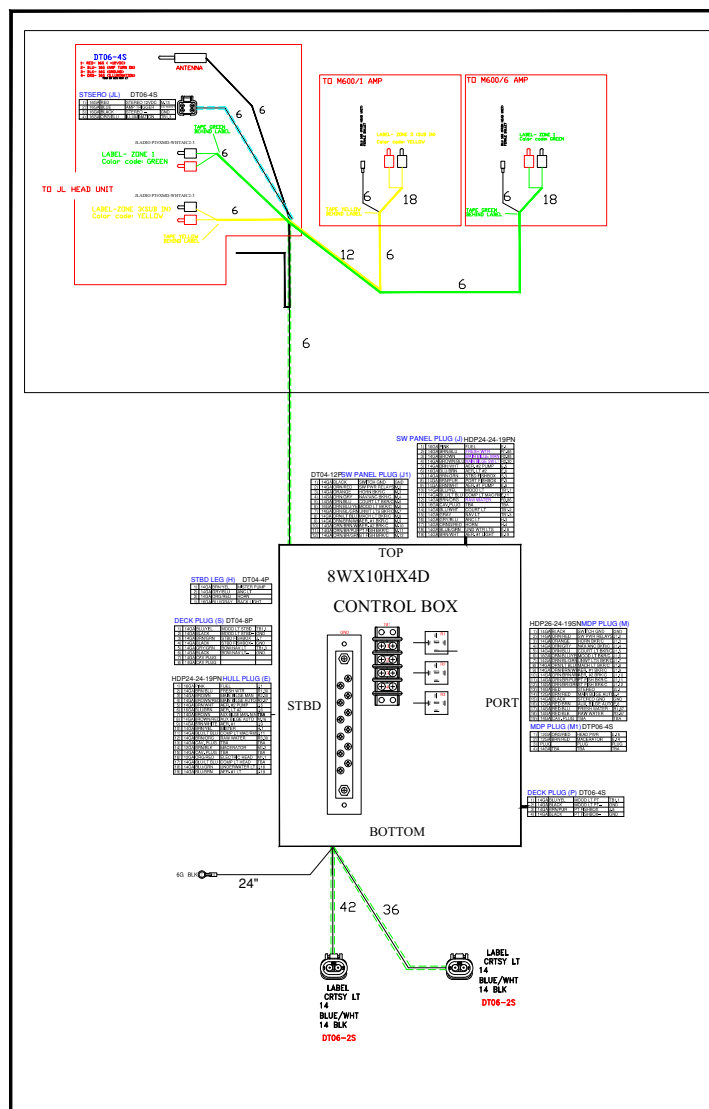


SFX-305-328A: 1) CHANGE FROM 3 WAY AND TWO WAY PLUG TO 4WAY PLUG
FOR MISTER, NAV, BACK LIGHT AND HORN, CHANGE NOMINCLATURE FROM SF TO ACCESSORY
2) CHANGE NOMINCLATURE FROM SF TO ACCESSORY

SFX-305-328B: 1) REMOVE SPEAKER WIRING- NOT USED FORE JL AUDIO

CONTROL BOX

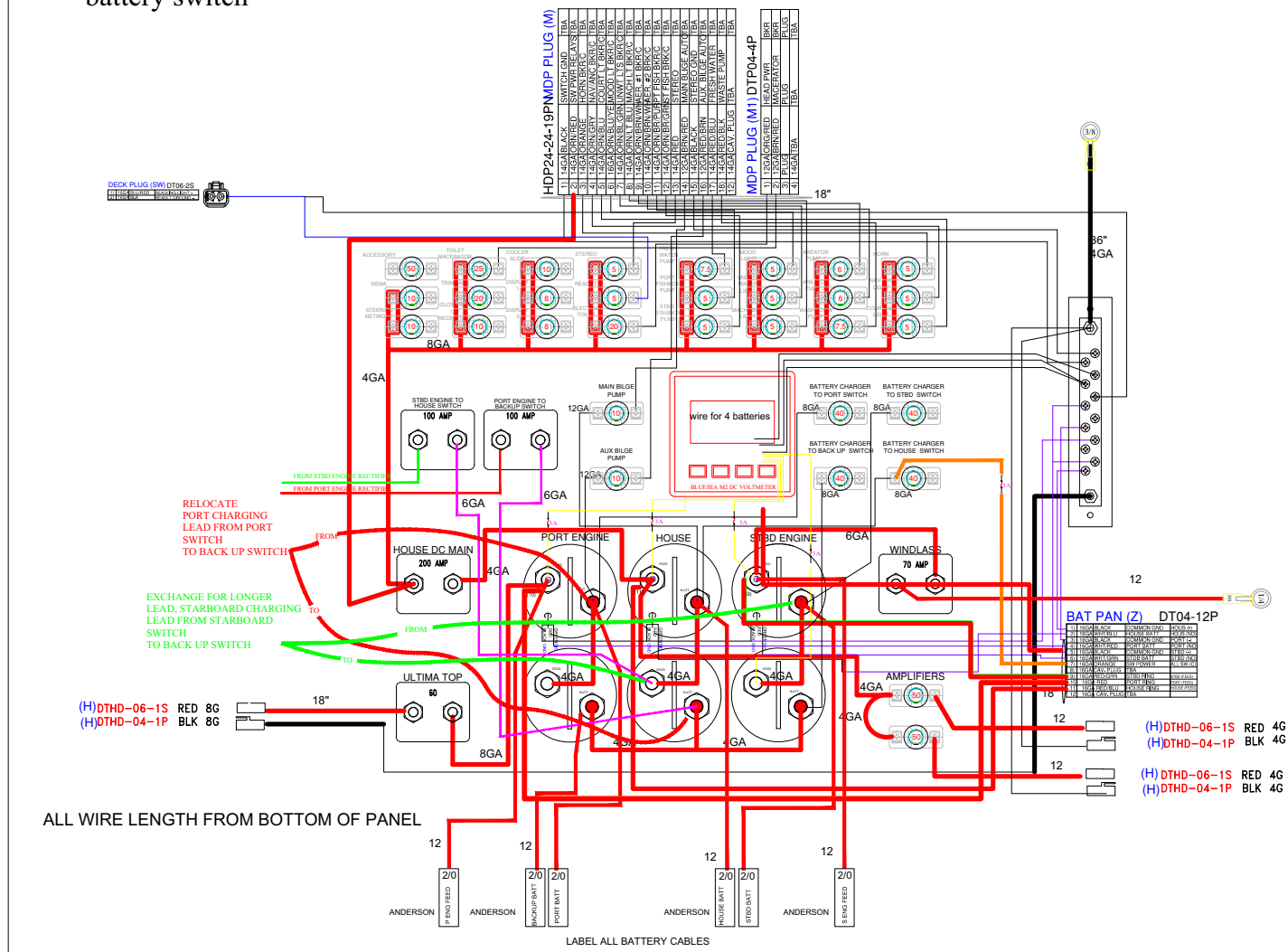
SFX-900-328X BOX, CONTROL 328



PANEL BATTERY BREAKER

PANEL, BATTERY BREAKER 328 SFX-600-328C

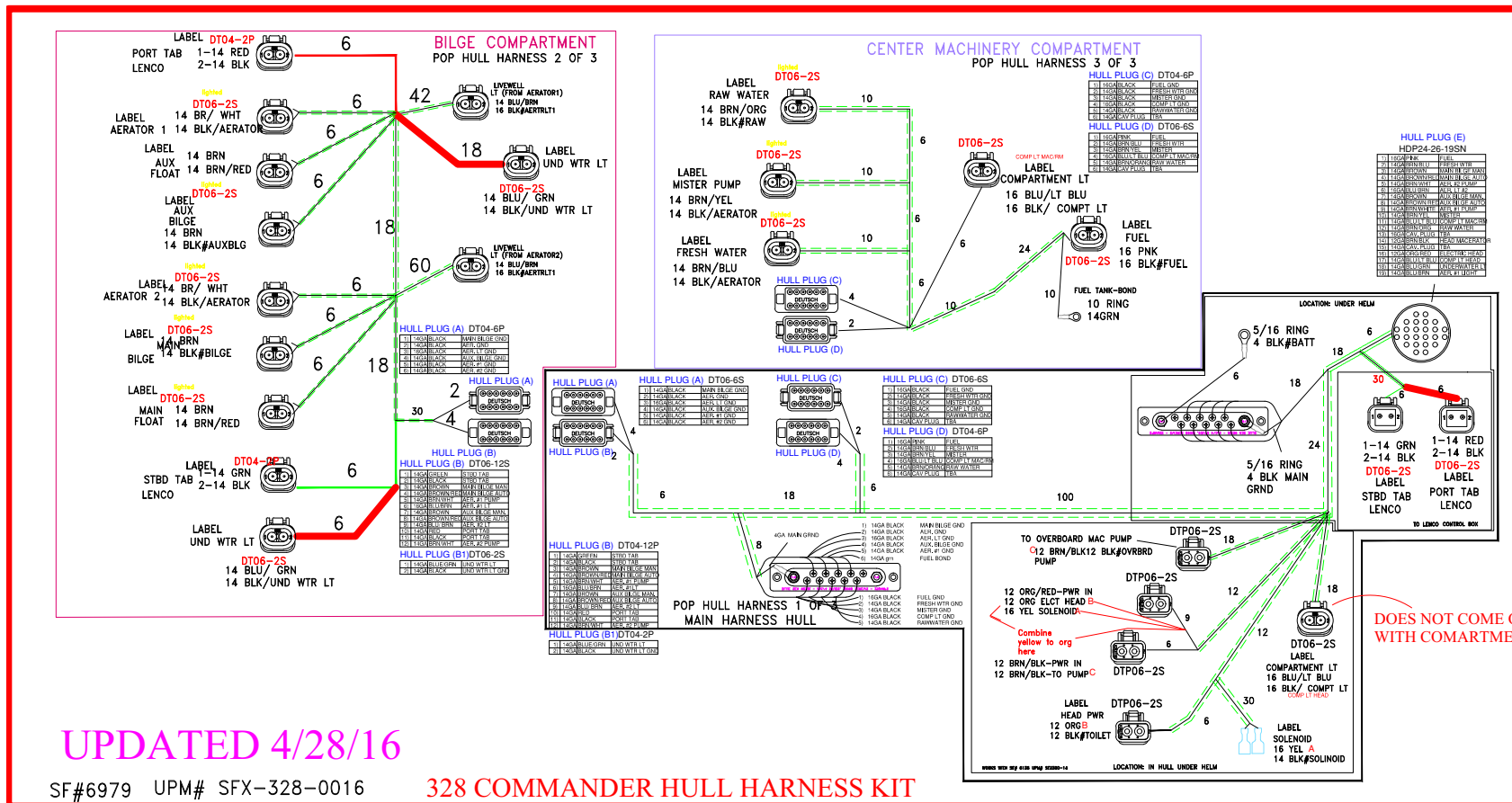
Move charging lead to correct battery switch



HARNESS ACC W/ LEN/ORB DEUTSCH (P/N 6979)

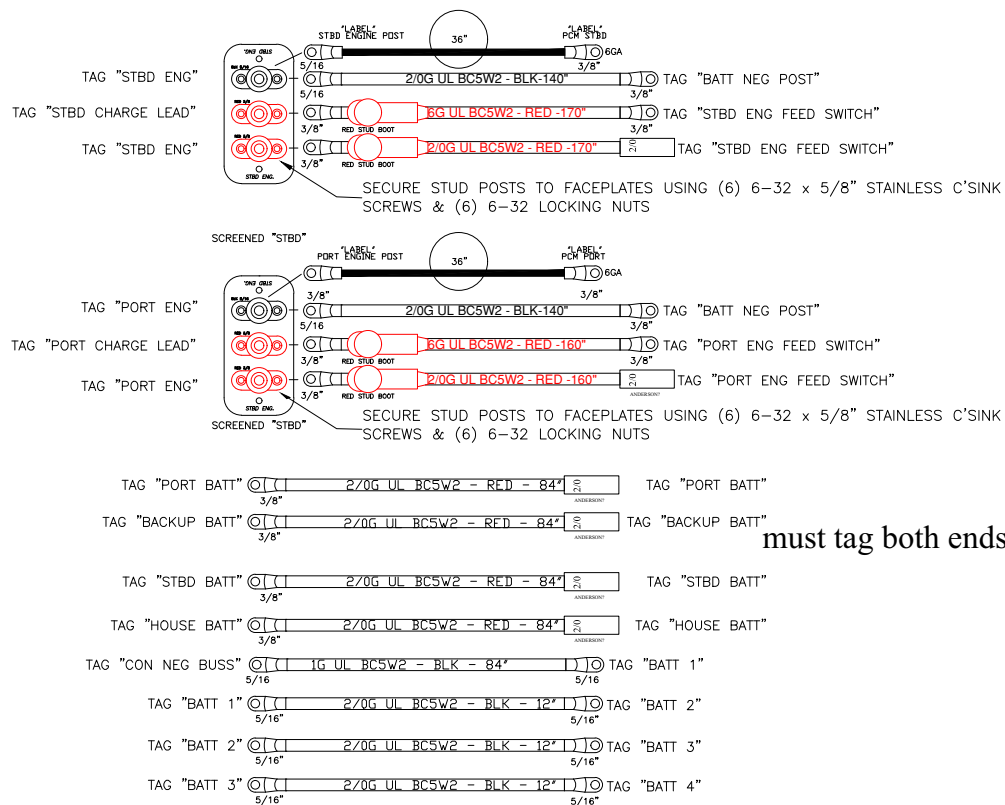
SFX-328-0016

HARNESS, HULL KIT 328



HARNESS BATTERY CABLE SET EPS (P/N 6980)

BATTERY CABLE SET HULL 328 SF# 6980 UPM# SFX-721-328B



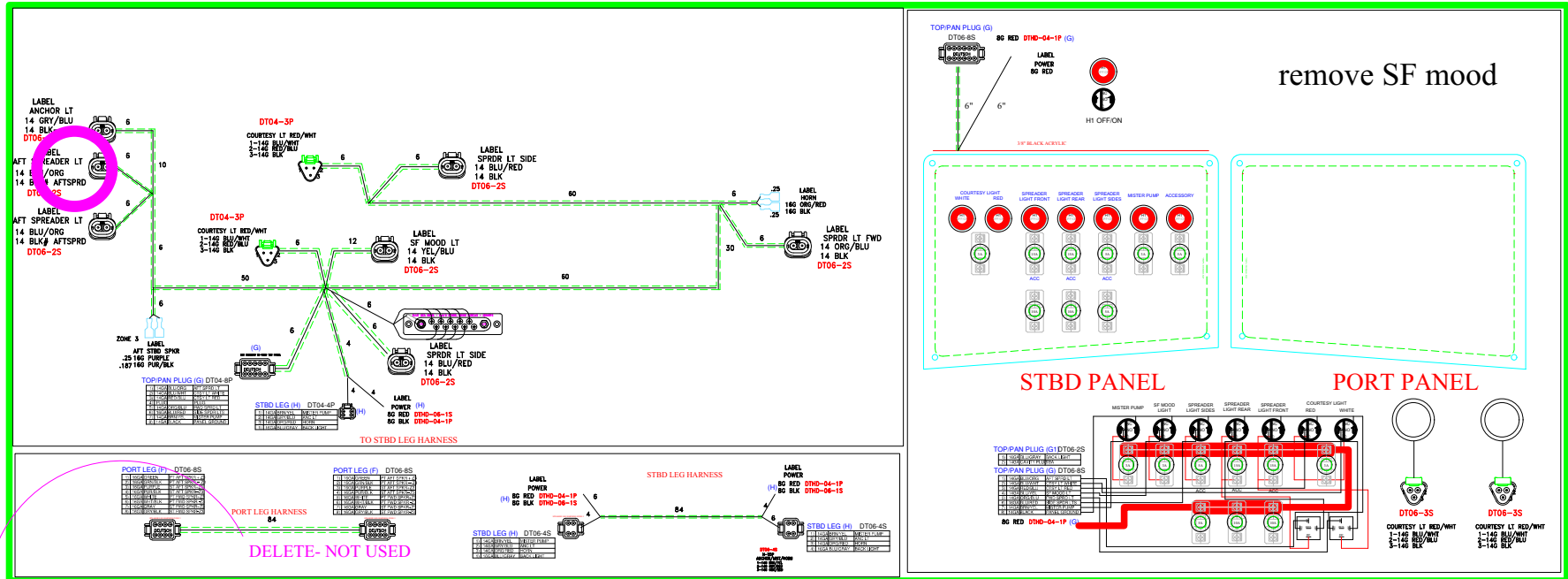
NOTES:

- (1) ALL RING TERMINALS ARE TO BE MECHANICAL CRIMPED AND ADHESIVE-LINED HEAT SHRUNK
- (2) TAG ALL CABLES AS SHOWN WITHIN 1-1/2" OF TERMINALS
- (3) CABLE TIE "TAG" (SHOWN ON TOP) TO BATTERY KIT.
- (4) BOX COMPLETED BATTERY KIT ASSEMBLY.



U PANEL SWITCH/HARNESS ULTIMA (P/N 6997)

SFX-305-328 HARNESS/ PANEL KIT 328

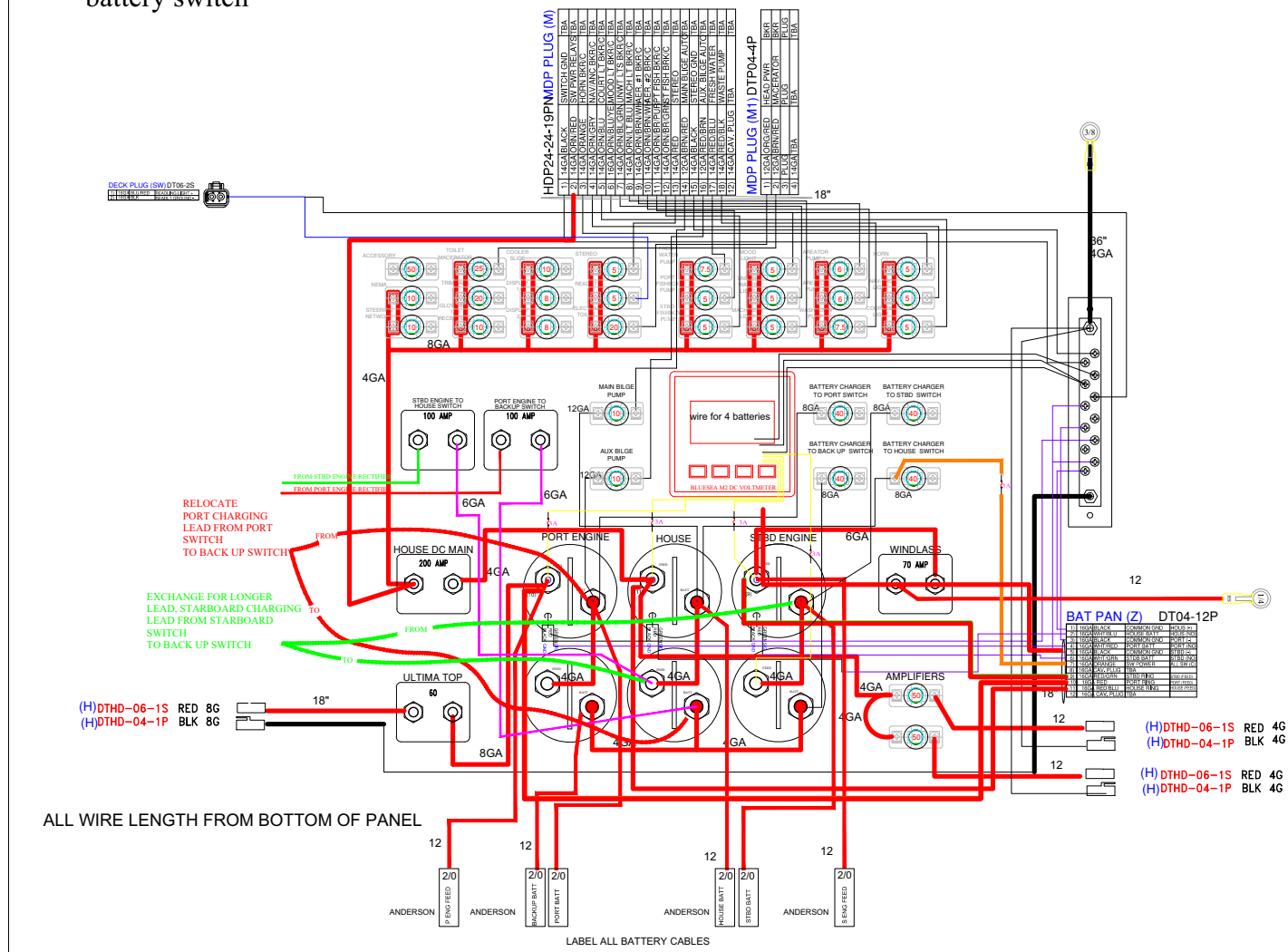


SFX-305-328A: 1) CHANGE FROM 3 WAY AND TWO WAY PLUG TO 4WAY PLUG
FOR MISTER, NAV, BACK LIGHT AND HORN, CHANGE NOMINCLATURE FROM SF TO ACCESSORY
2) CHANGE NOMINCLATURE FROM SF TO ACCESSORY

SFX-305-328B: 1) REMOVE SPEAKER WIRING- NOT USED FORE JL AUDIO

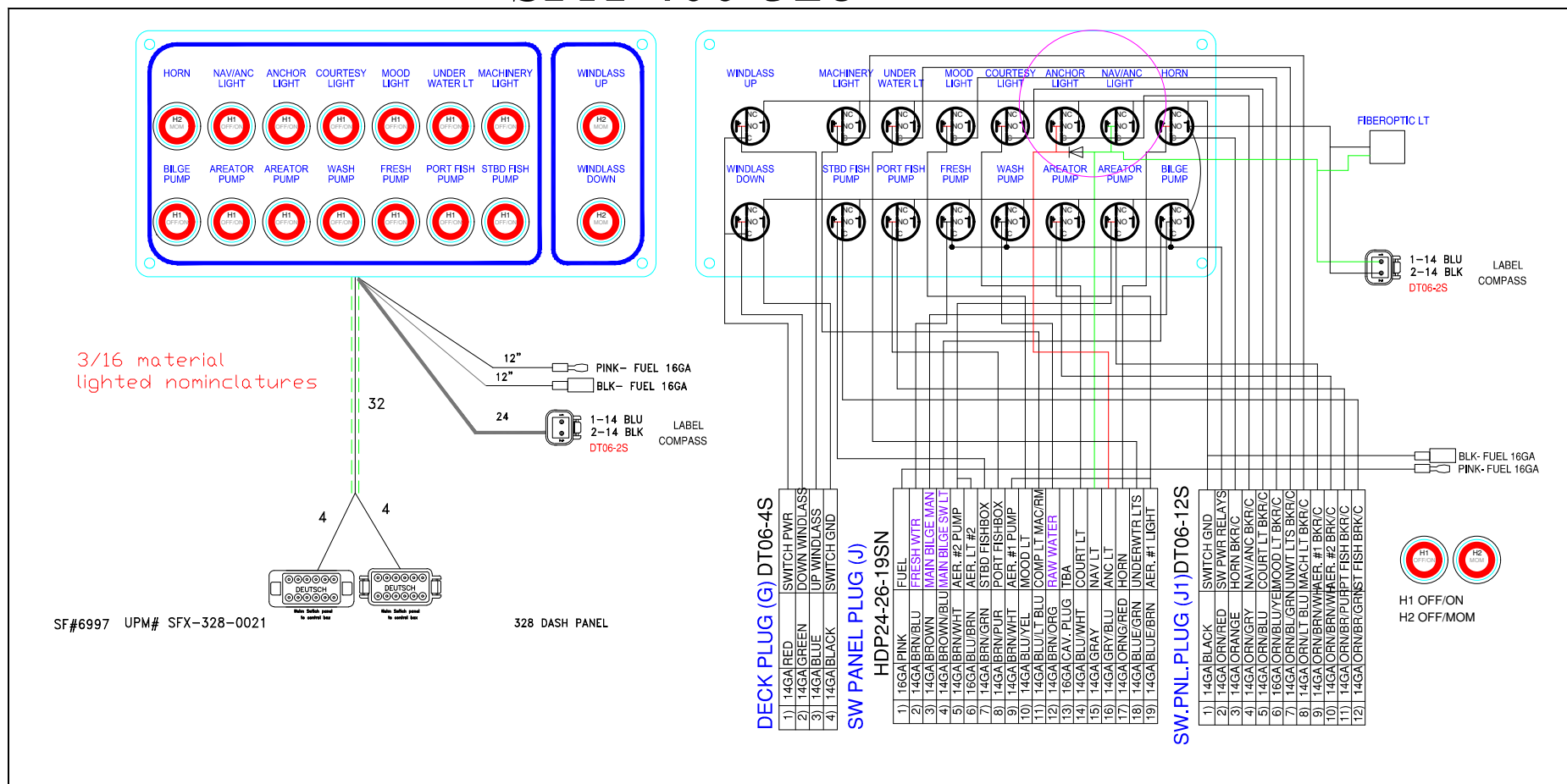
PANEL, BATTERY BREAKER 328 SFX-600-328C

Move charging lead to correct battery switch



PANEL SWITCH DEUTSCH (P/N 7139)

PANEL, HELM SWITCH 328 SFX-400-328

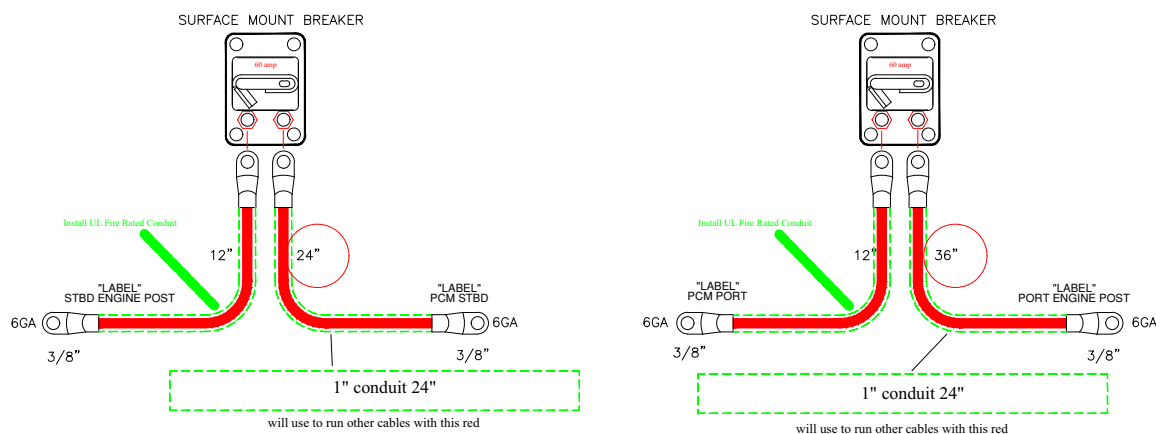


PANEL, KEY BATT 328
SFX-100-328



BREAKER KIT - 60-AMP EPS (P/N 7378)

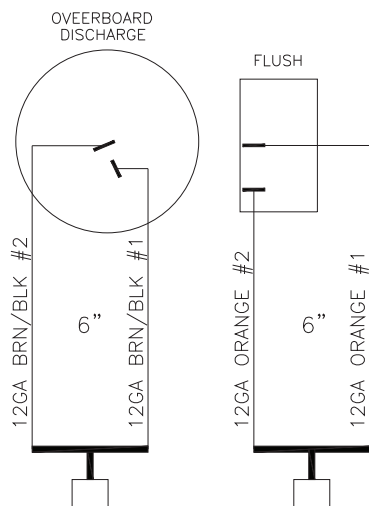
BREAKER KIT- SEASTAR EPS-60AMP- SFX-730-328A



NOTES:

- (1) ALL RING TERMINALS ARE TO BE MECHANICAL CRIMPED AND ADHESIVE-LINED HEAT SHRUNK
- (2) TAG ALL CABLES AS SHOWN WITHIN 1-1/2" OF TERMINALS
- (3) CABLE TIE "TAG" (SHOWN ON TOP) TO BATTERY KIT.
- (4) BOX COMPLETED BATTERY KIT ASSEMBLY.

HEAD PANEL SWITCH ORB (P/N 6136) – OPTIONAL

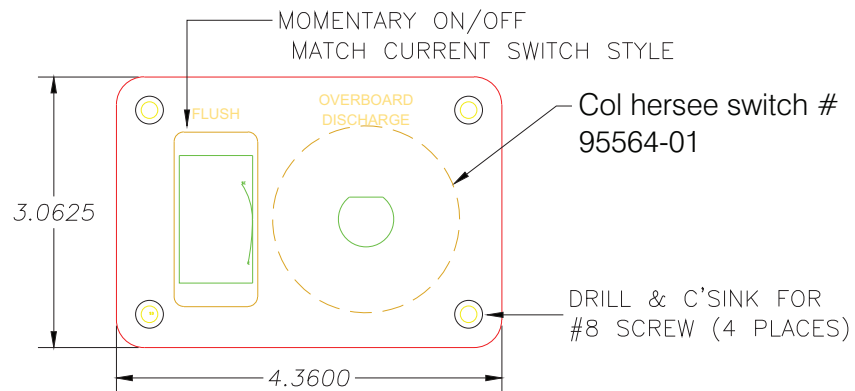


- | | |
|--------------------|-------------------|
| 1. 12GA BRN/BLK #1 | 1. 12GA ORANGE #1 |
| 2. 12GA BRN/BLK #2 | 2. 12GA ORANGE #2 |

MATCH CONNECTORS TO NEW
256CC/WA HARNESS

NOTES:

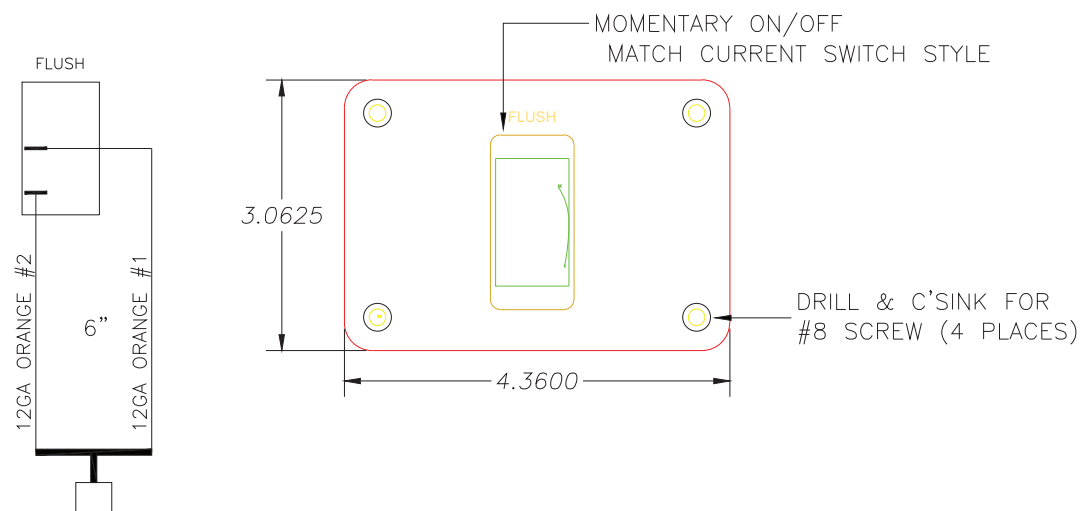
- | | |
|-----|---------------------|
| (1) | PAIN TEXTURED BLACK |
| (2) | SCREEN WHITE |



ASSEMBLY NOTE:
Inject every push-on connector
with dielectric grease prior to
attachment to switch.

SEAFOX PT# 6136

HEAD PANEL SWITCH ORB (P/N 6870)



1. 12GA ORANGE #1
2. 12GA ORANGE #2

MATCH CONNECTORS TO NEW
256CC/WA HARNESS

NOTES:

- (1) PAINT TEXTURED BLACK
- (2) SCREEN WHITE

ASSEMBLY NOTE:
Inject every push-on connector
with dielectric grease prior to
attachment to switch.

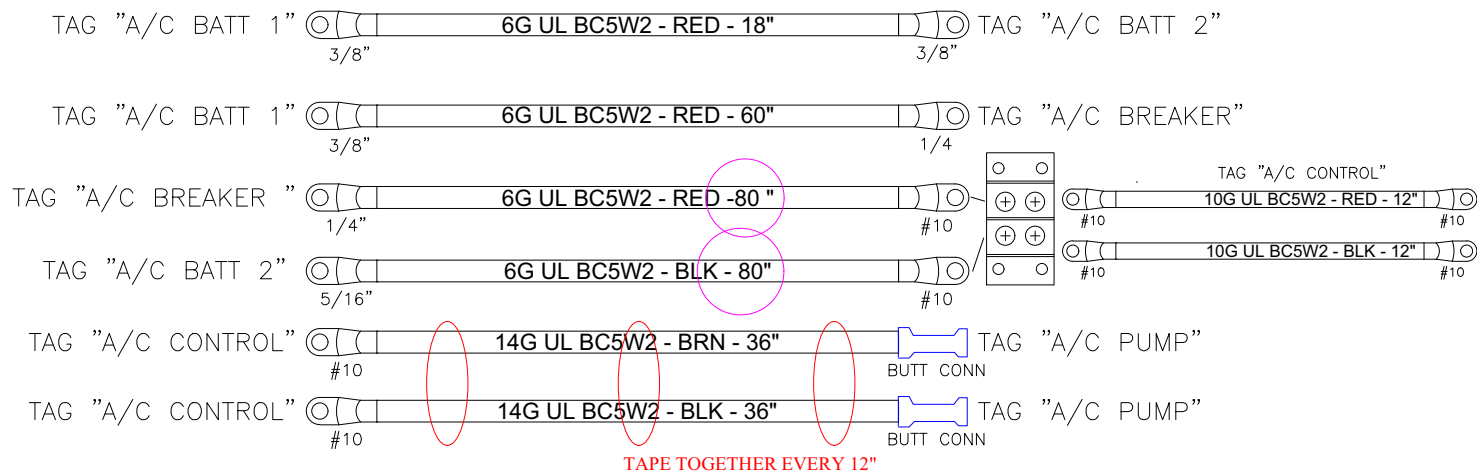
SF# 6870 UPM# SFX-028-11

CABLE AC SET (P/N 7141) – OPTIONAL

SFX-750-328A- EXTEND A/C BREAKER- RED, AND A/C BATT 2 ECHANGE TO 60" FRO 36"

SFX-750-328B- EXTEND A/C BREAKER- RED, AND A/C BATT 2 ECHANGE TO 80" FRO 60"

CABLE, AC SET 328



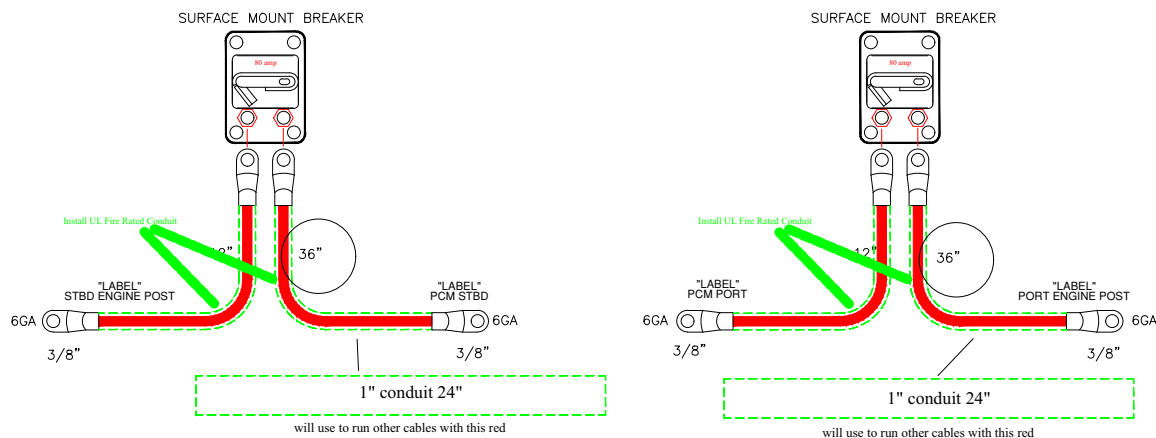
AIR CONDITIONER CABLE SET

NOTES:

- (1) ALL RING TERMINALS ARE TO BE MECHANICAL CRIMPED AND ADHESIVE-LINED HEAT SHRUNK
- (2) TAG ALL CABLES AS SHOWN WITHIN 1-1/2" OF TERMINALS
- (3) CABLE TIE "TAG" (SHOWN ON TOP) TO BATTERY KIT.
- (4) BOX COMPLETED BATTERY KIT ASSEMBLY.

BREAKER ASSEMBLY - 80-AMP HELM MASTER (P/N 7379) – OPTIONAL

BREAKER KIT- HELM-MASTER-80AMP- SFX-735-328A



NOTES:

- (1) ALL RING TERMINALS ARE TO BE MECHANICAL CRIMPED AND ADHESIVE-LINED HEAT SHRUNK
- (2) TAG ALL CABLES AS SHOWN WITHIN 1-1/2" OF TERMINALS
- (3) CABLE TIE "TAG" (SHOWN ON TOP) TO BATTERY KIT.
- (4) BOX COMPLETED BATTERY KIT ASSEMBLY.



Sea Fox Boat Company, Inc.
2550 Highway 52
Moncks Corner, SC 29461-5024

Telephone: 843-761-6090
www.seafoxboats.com

Ken Cook Co.
Printed in U.S.A.
Rev 0424