



Owner's Manual Supplement

www.SeaFoxBoats.com

SEA FOX BOAT'S DISCLAIMER

The following Owner's Manual is provided for information and educational purposes only and is not intended to offer or provide legal advice or create a contractual relationship between Sea Fox Boat Company and the owner of any Sea Fox brand vessel. Please beware that as a vessel owner you have non-delegable responsibilities regarding the safety, maintenance, fitness, and operation of your vessel and the extent of such responsibilities is ultimately determined by Federal law and regulations, the general maritime law of the United States, the laws and regulations of the states and territories of the United States, or the laws and regulations of the country where you operate your vessel. To fully understand your responsibilities as a vessel owner, and before operating or letting any third-party operate your vessel, we recommend that you consult the services of a qualified lawyer in admiralty and maritime law.

TABLE OF CONTENTS

Introduction	3	Harness Windlass Panel	19
Specifications	3	Harness Panel Kit	20
Designated Occupant Seating	4	Control Box	21
Plumbing Schematics	5	Panel Battery Breaker	22
Commander Drains	5	Harness ACC w/ Len/ORB Deutsch (P/N 6979)	23
Commander Drains (Continued)	6	Harness Battery Cable Set EPS (P/N 6980)	24
Commander Livewell A System	7	Harness Deck (P/N 6985)	25
Commander Livewell B System	8	U Panel Switch/Harness Ultima (P/N 6997)	26
Commander Air Conditioning System	9	Panel Box Junction Console (P/N 7137)	27
Commander Fresh Water System	10	Panel Breaker Con w/ Battery Switch (P/N 7138)	28
Commander Fuel System	11	Panel Switch Deutsch (P/N 7139)	29
Commander Bilge System	12	Panel Switch Key/Remote Battery Helm (P/N 7140)	30
Commander Mister System	13	Breaker Kit - 60-Amp EPS (P/N 7378)	31
Commander Raw Water System	14	Head Panel Switch ORB (P/N 6136) – Optional	32
Commander Waste System	15	Head Panel Switch ORB (P/N 6870)	33
Electrical Schematics	16	Cable AC Set (P/N 7141) – Optional	34
Twin Engine with 4-Battery Setup and Charger	16	Breaker Assembly - 80-Amp Helm Master (P/N 7379) – Optional	35
Harness & Panel Cooler Slide	17		
Harness JL Stereo	18		



This Page Intentionally Left Blank

INTRODUCTION

Congratulations and Welcome Aboard! With so many boat brands to choose from, we want to congratulate you on your decision to choose Sea Fox Boats. For more than 24 years, Sea Fox offers the finest hand-crafted saltwater boats carefully balanced with the build-quality, features, styling and performance for the fairest price. Our passion for boating is evident in every model we make and we appreciate that you've noticed the Sea Fox difference.

We share your love for the moments spent on the water with friends and family, which is why every Sea Fox boat offers a unique blend of fishing/family options, technologies and innovative features. Your choice of a Sea Fox affirms that you have performed your research and compared the value of your model with the competition.

Whether you are new to the boating lifestyle or an old salt, we ask that **you and all other operators** read the owner's manual, this supplement, and all other literature provided with the boat **before** operating the boat or any equipment. We also recommend that all operators enroll in a boating safety course available online - see References and Contact Information in this section for education resources online.

This supplement contains model-specific information not included with the owner's manual. This manual is not intended to be a replacement for specific product literature provided by engine, accessory or other major equipment manufacturers, but rather to supplement that information.

Because of our philosophy of continuous product improvement, this manual serves as a general guide only, so the specifications and illustrations used may not match the equipment on your boat and are intended only as general reference views.

We welcome you to the Sea Fox family and wish you many years of boating enjoyment!

SPECIFICATIONS

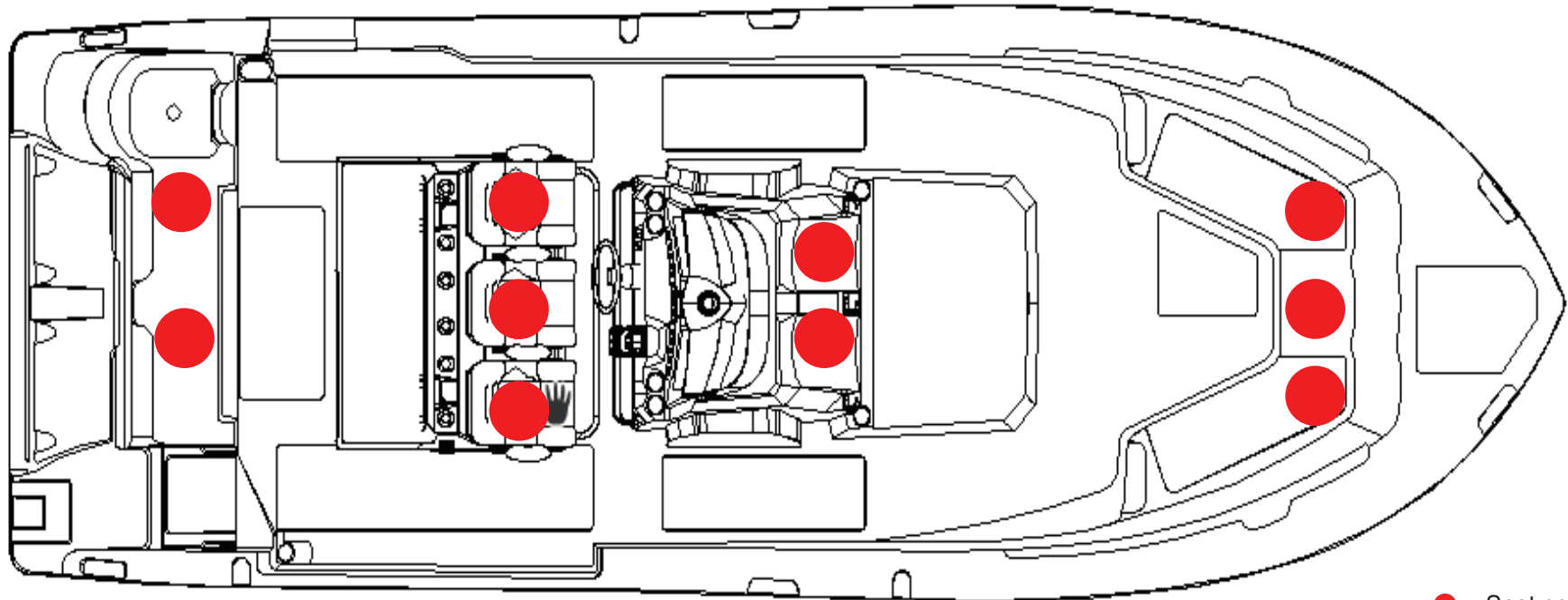
Max. Weight Capacity	Yacht Certification
Persons	Yacht Certification
Persons Weight	Yacht Certification
Max. HP	700 hp (522 kw)
L.O.A.	32' (9.75 m)
Beam	10' 8" (3.25 m)
Draft	24 in. (0.61 m)
Height, Keel to Top (Light Folded)	**
Bridge Clearance Hard Top	115 in. (2.92 m)
Max. Weight Boat (w/ Fluids, Largest HP)	14001 lbs (6351 kg)
Fuel Tank Capacity	313 gal (1185 L)
Freshwater Tank Capacity	30 gal (114 L)
Holding Tank Capacity	12 gal (45 L)

* Keel to Top - 135 in. (3.43 m), W/outriggers - 138 in. (3.51 m), W/18" radar - 139 in. (3.53 m)



DESIGNATED OCCUPANT SEATING

Be sure all passengers are properly seated in designated seating positions and not riding on the bow, bow pulpit, deck, gunwale or rear sun deck while underway. Passengers must use hand-holds and use caution when riding in the bow. Move to the aft passenger seats during rough water operation or if visibility is restricted.

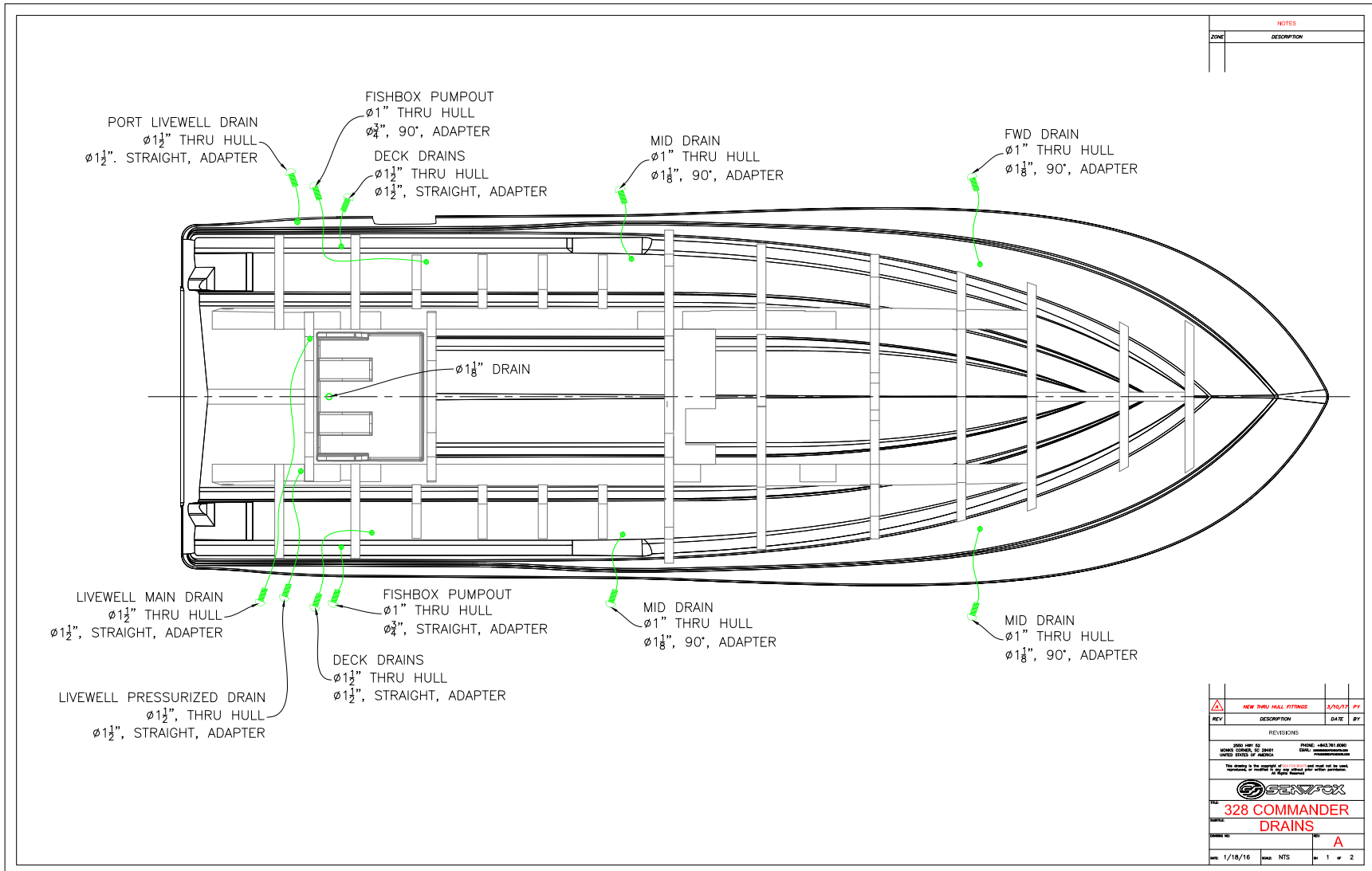


● = Seat position

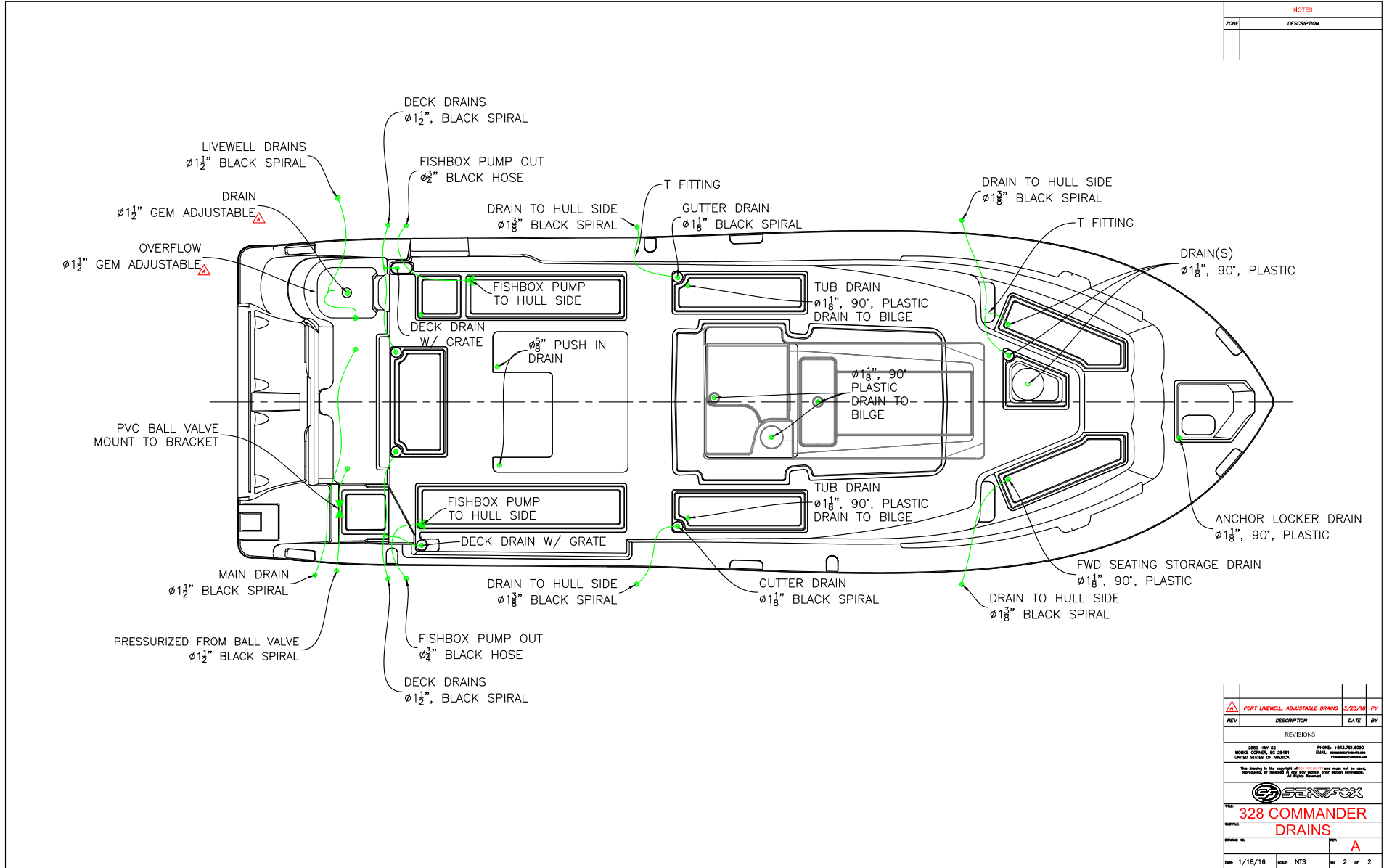
SFOX-0021

PLUMBING SCHEMATICS

COMMANDER DRAINS



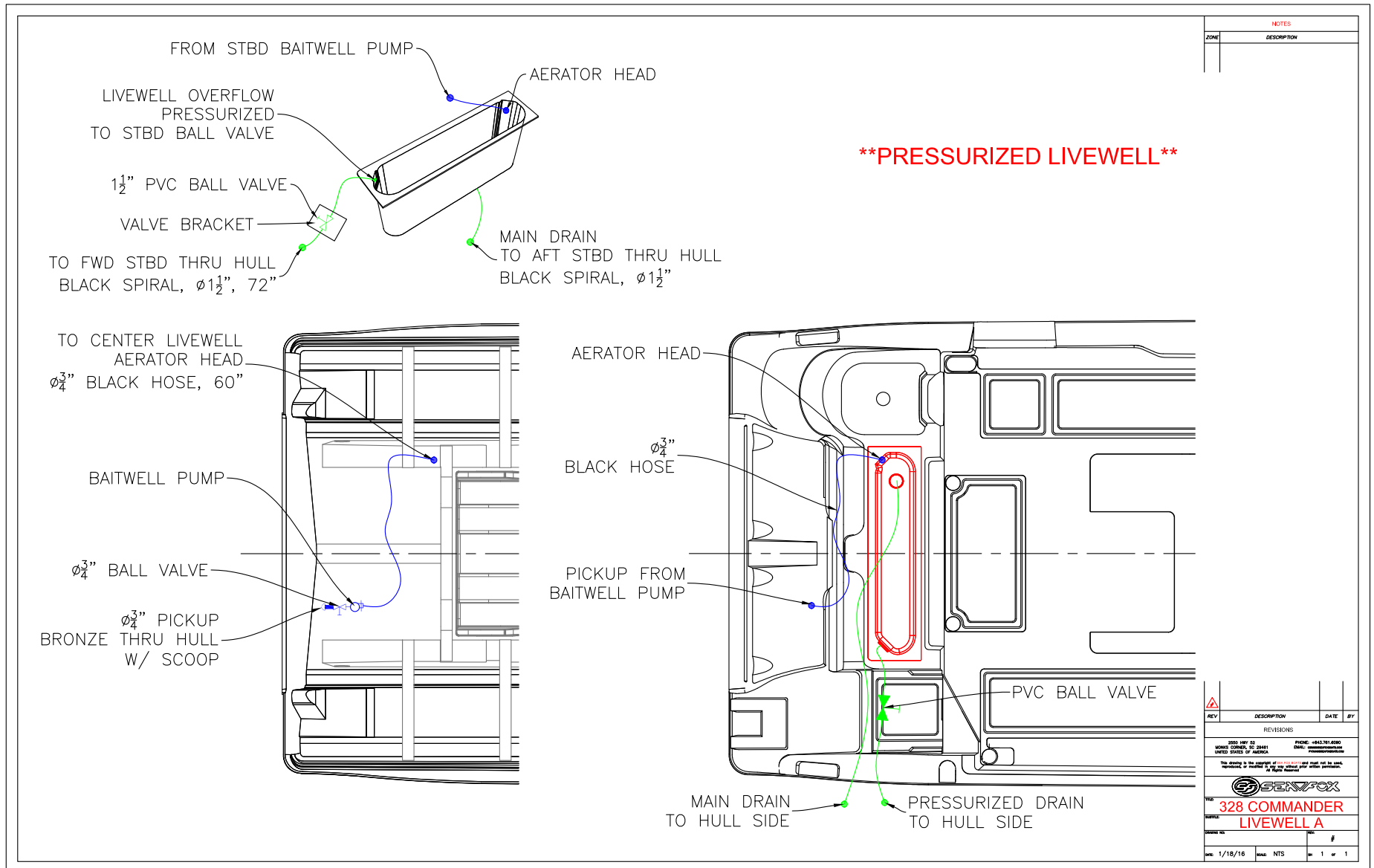
COMMANDER DRAINS (CONTINUED)



NOTES	
ZONE	DESCRIPTION

REV	DESCRIPTION	DATE	BY
REVISIONS			
2000 HWY 22 MILWAUKEE, WI 53141 UNITED STATES OF AMERICA		PHONE: +645.761.6090 EMAIL: info@seafox.com	
This drawing is the property of SeaFox and shall not be used, reproduced, or modified in any manner without written permission. All Rights Reserved.			
328 COMMANDER DRAINS			
DATE	REV	BY	
1/18/16	NTS	A	
PAGE NTS		OF 2 OF 2	

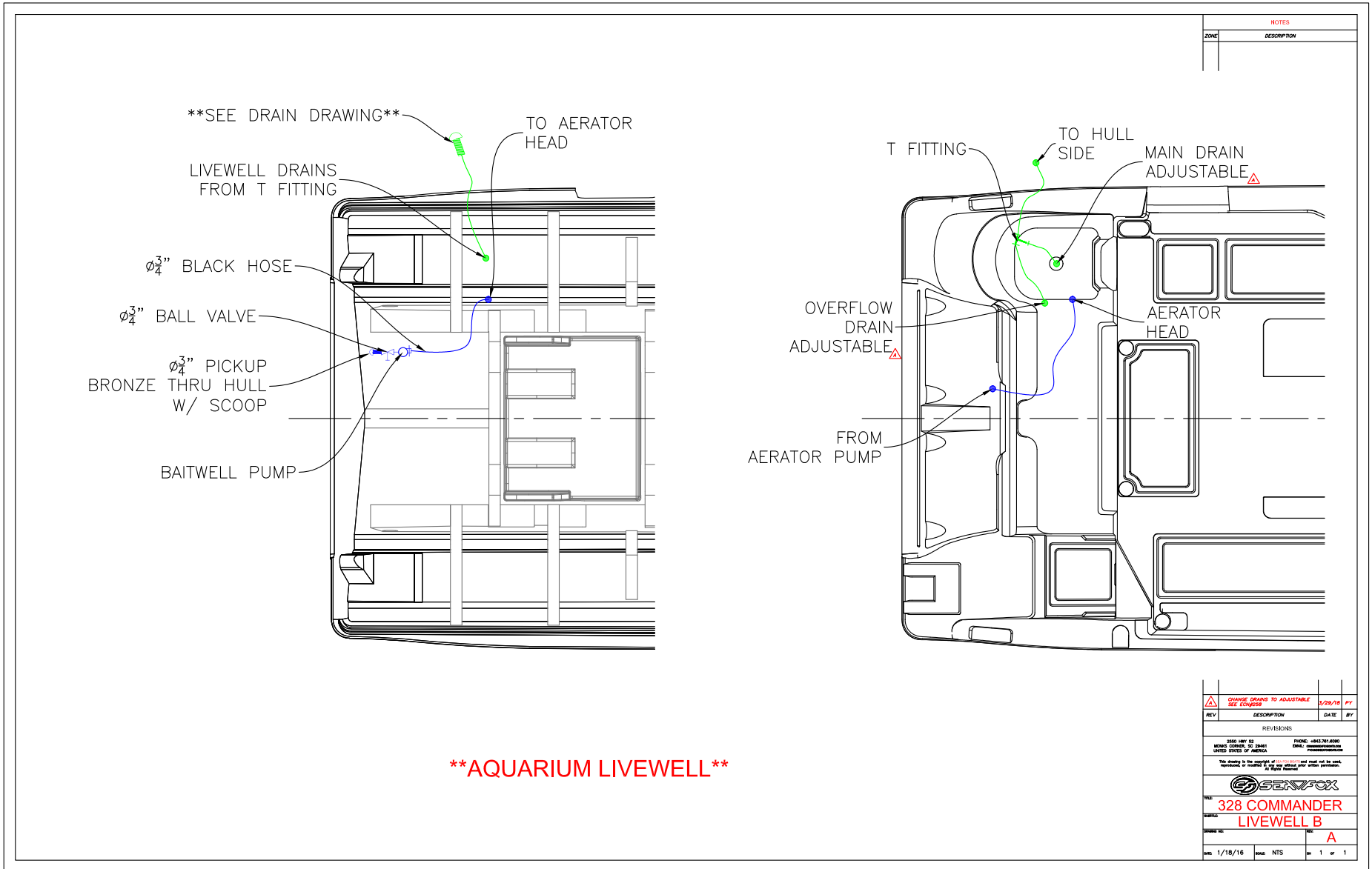
COMMANDER LIVEWELL A SYSTEM



NOTES	
ZONE	DESCRIPTION

REV	DESCRIPTION	DATE	BY
REVISIONS			
<small>3288 INT 02 MODEL CENTER, NC 28461 UNITED STATES OF AMERICA</small>			
<small>THE BUYER IS THE SOLE USER OF THIS DRAWING AND SHALL BE SOLE RESPONSIBLE FOR ANY CHANGES.</small>			
328 COMMANDER LIVEWELL A			
DATE	REV	#	
1/18/16	NTS	1 of 1	

COMMANDER LIVEWELL B SYSTEM



NOTES	
ZONE	DESCRIPTION

REV	DESCRIPTION	DATE	BY

REVISIONS

3550 HWY 82 PHONE: +845.761.6000
 MARCO CENTER, 22 JONES CANYON RD. WESTPORT, NY 10994
 UNITED STATES OF AMERICA

You hereby acknowledge that you have read and understand the contents of this document and that you agree to be bound by the terms, conditions, and limitations set forth herein.

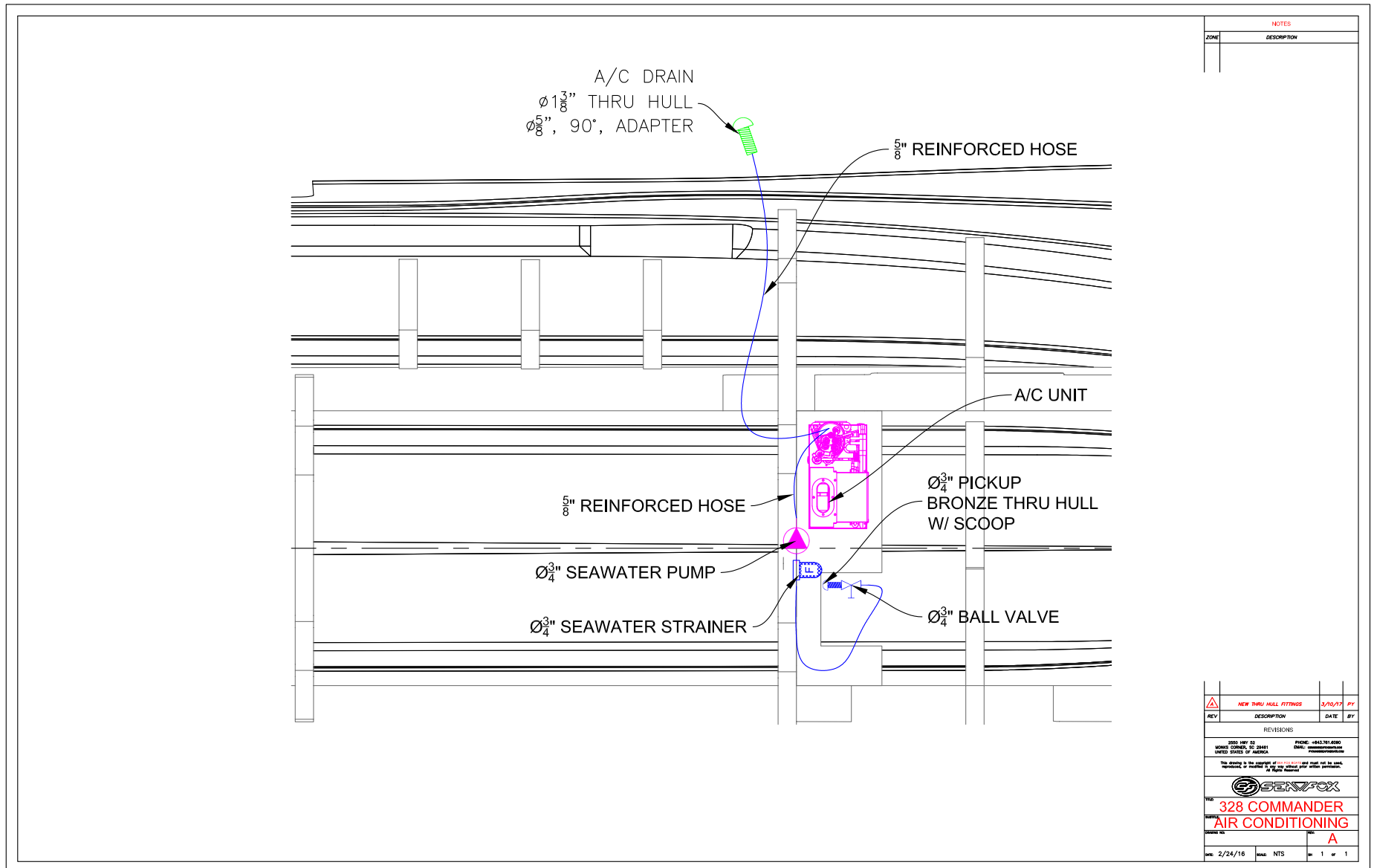
SEAFOX

TITLE: **328 COMMANDER LIVEWELL B**

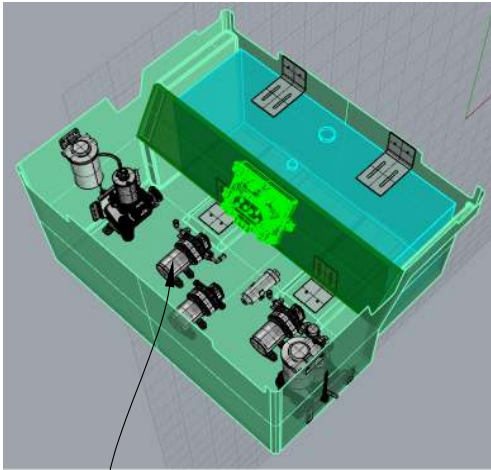
DATE: **1/18/16** REV: **A**

SCALE: **1/18/16** DRAWN: **NTS** SHEET: **1** OF **1**

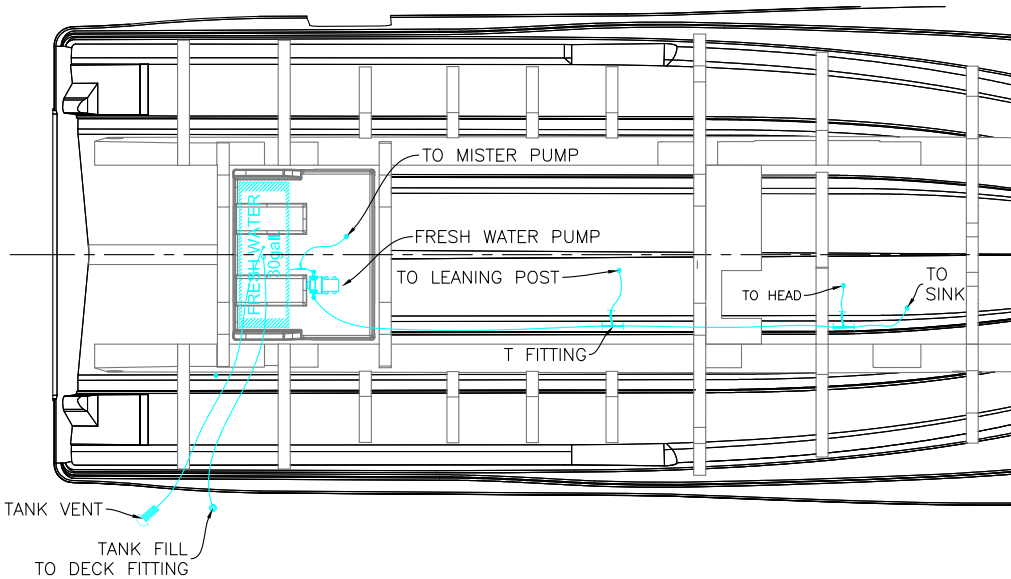
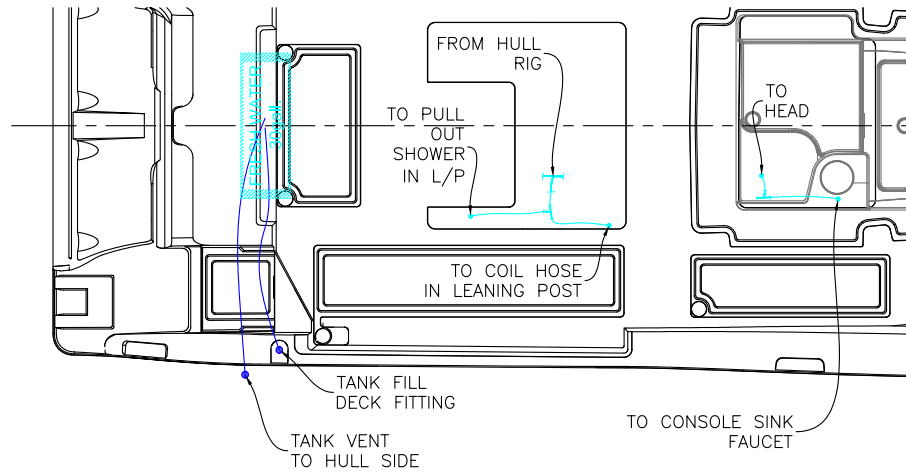
COMMANDER AIR CONDITIONING SYSTEM



COMMANDER FRESH WATER SYSTEM



FRESH WATER



NOTES	
ZONE	DESCRIPTION

REV	DESCRIPTION	DATE	BY

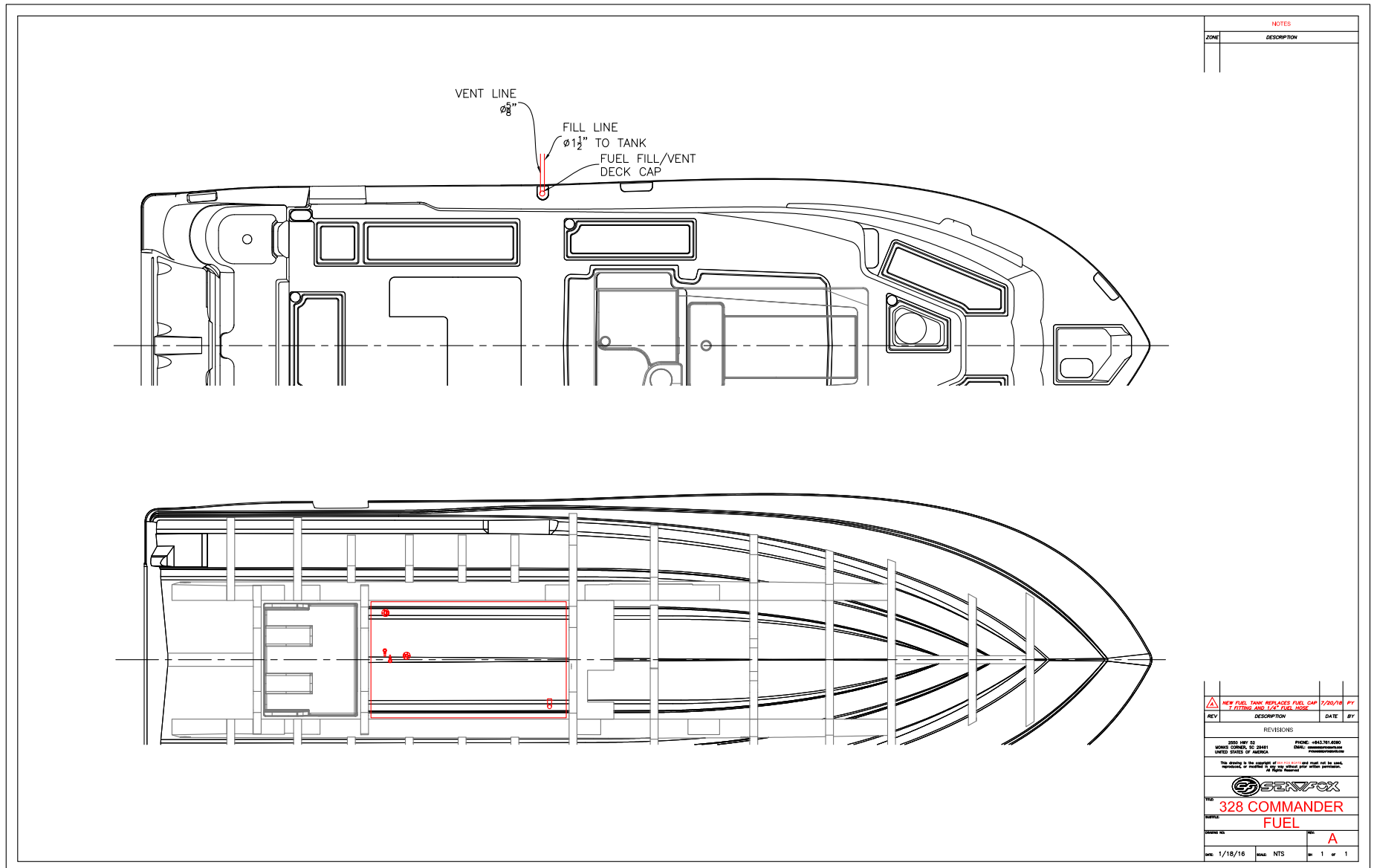
REVISIONS

3288-187-02 PHONE: 4843.741.6000
 3000S CROWN, SC 29941 FAX: 4843.741.6000
 UNITED STATES OF AMERICA WWW.SEAFOXBOATS.COM

328 COMMANDER FRESH WATER

DATE: 12/9/15 SHEET: NTS OF 1 OF 1

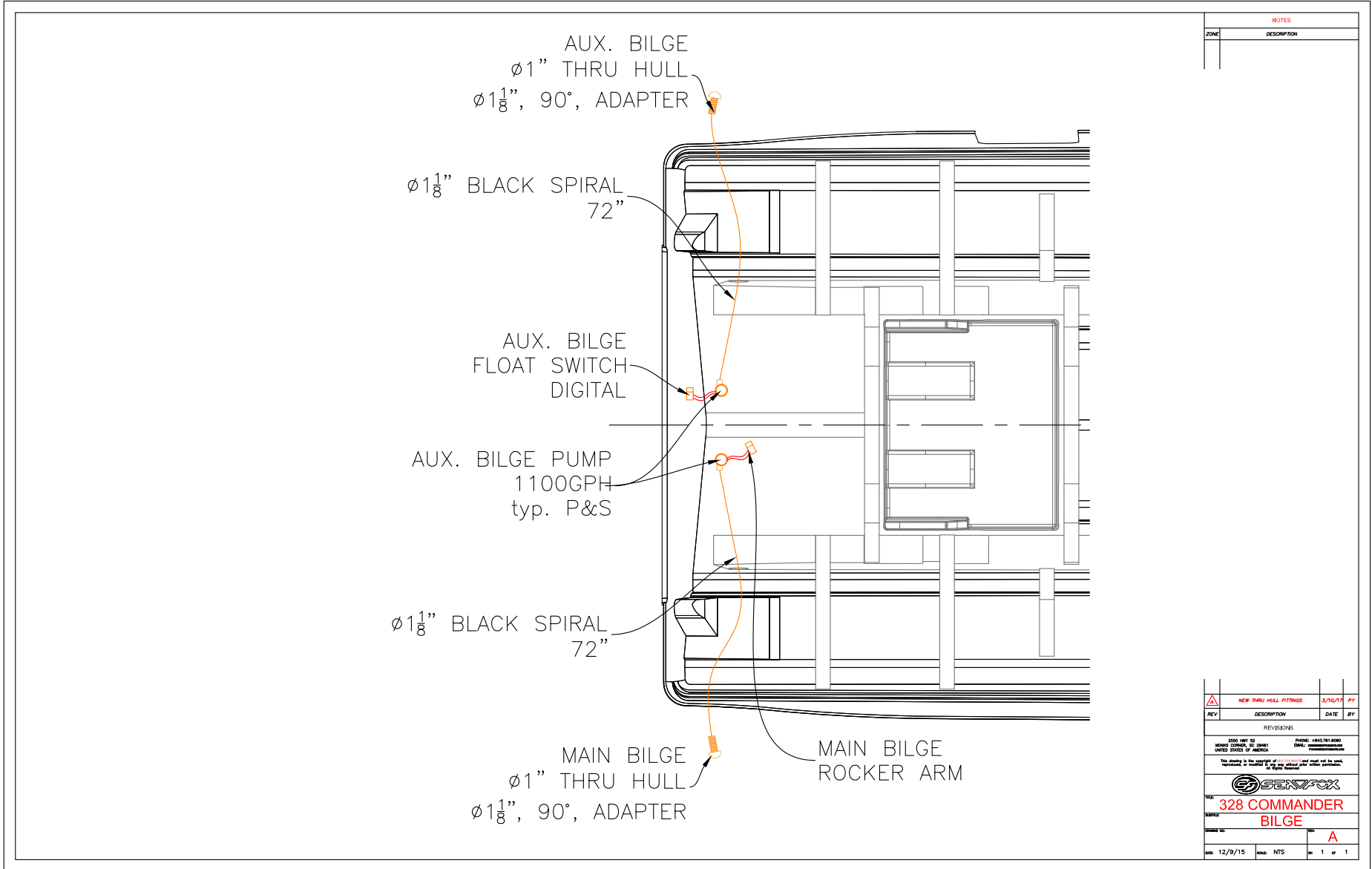
COMMANDER FUEL SYSTEM



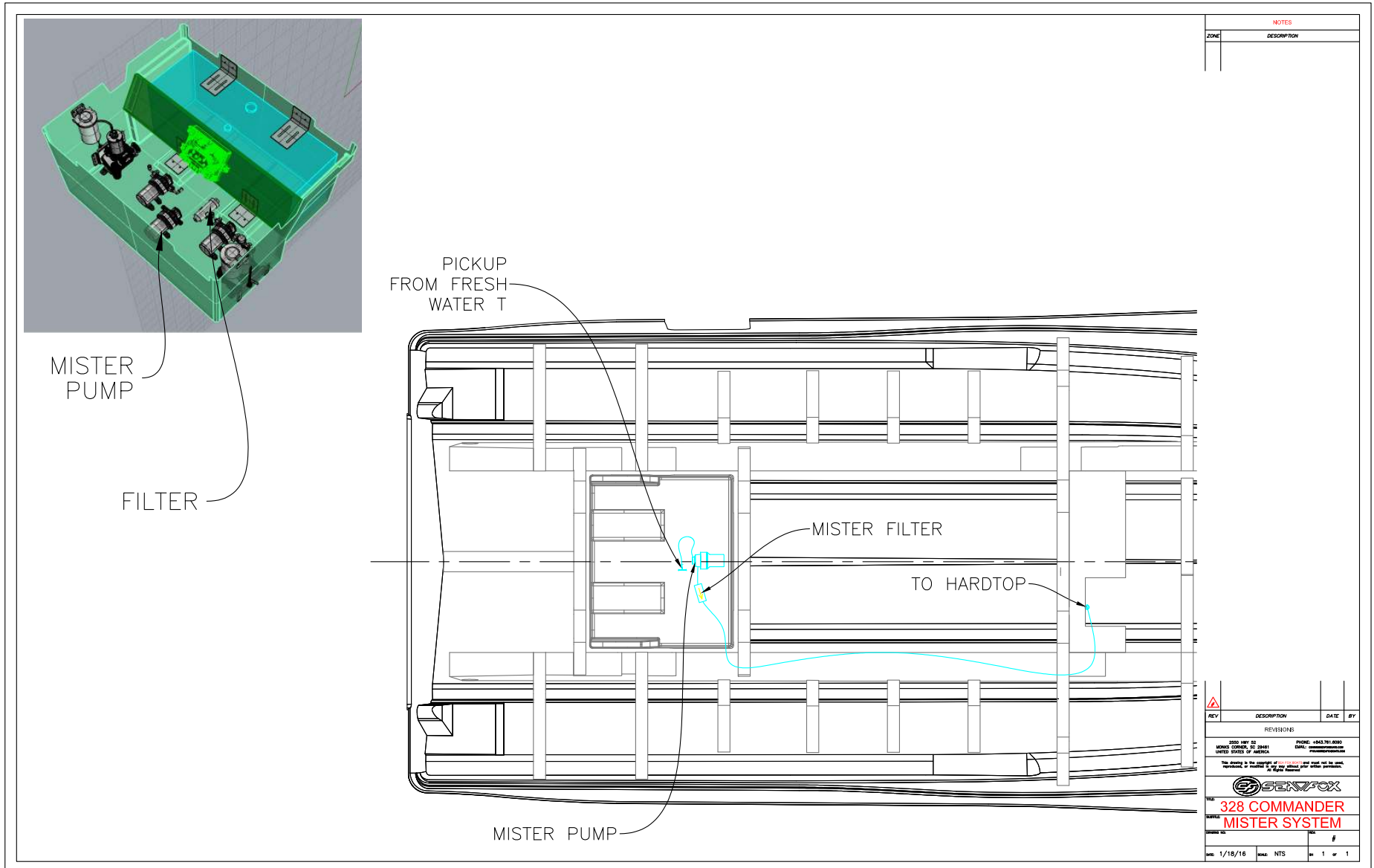
NOTES	
ZONE	DESCRIPTION

NEW FUEL TANK REPLACES FUEL CAP 1/20/16 BY			
REV	DESCRIPTION	DATE	BY
REVISIONS 3225 HWY 32 NORFOLK, VIRGINIA 23502 UNITED STATES OF AMERICA PHONE: 443.741.6000 FAX: 443.741.6000 WWW.SEAFOXBOATS.COM			
328 COMMANDER FUEL			
DATE	REV	A	
1/18/16	NTS	1 of 1	

COMMANDER BILGE SYSTEM



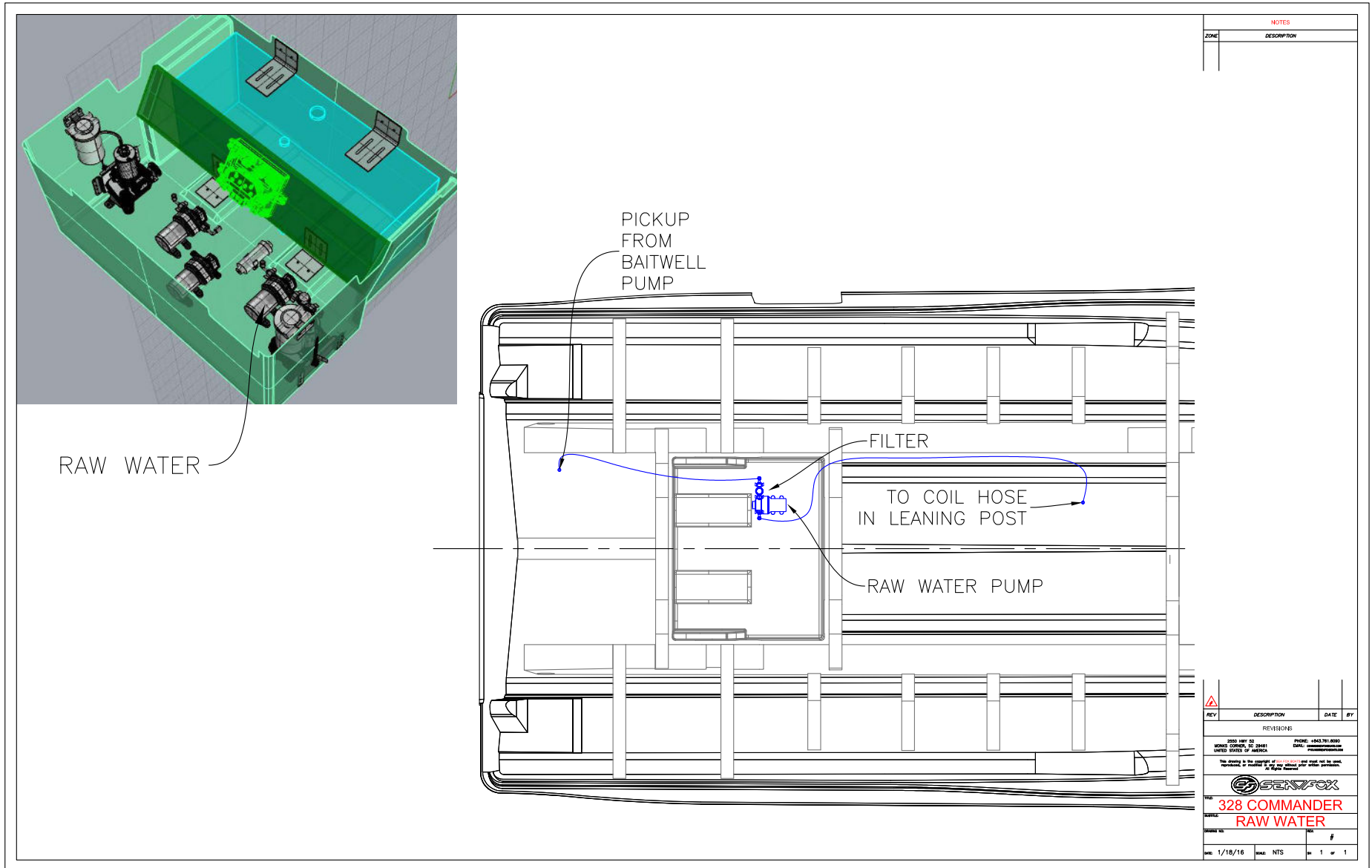
COMMANDER MISTER SYSTEM



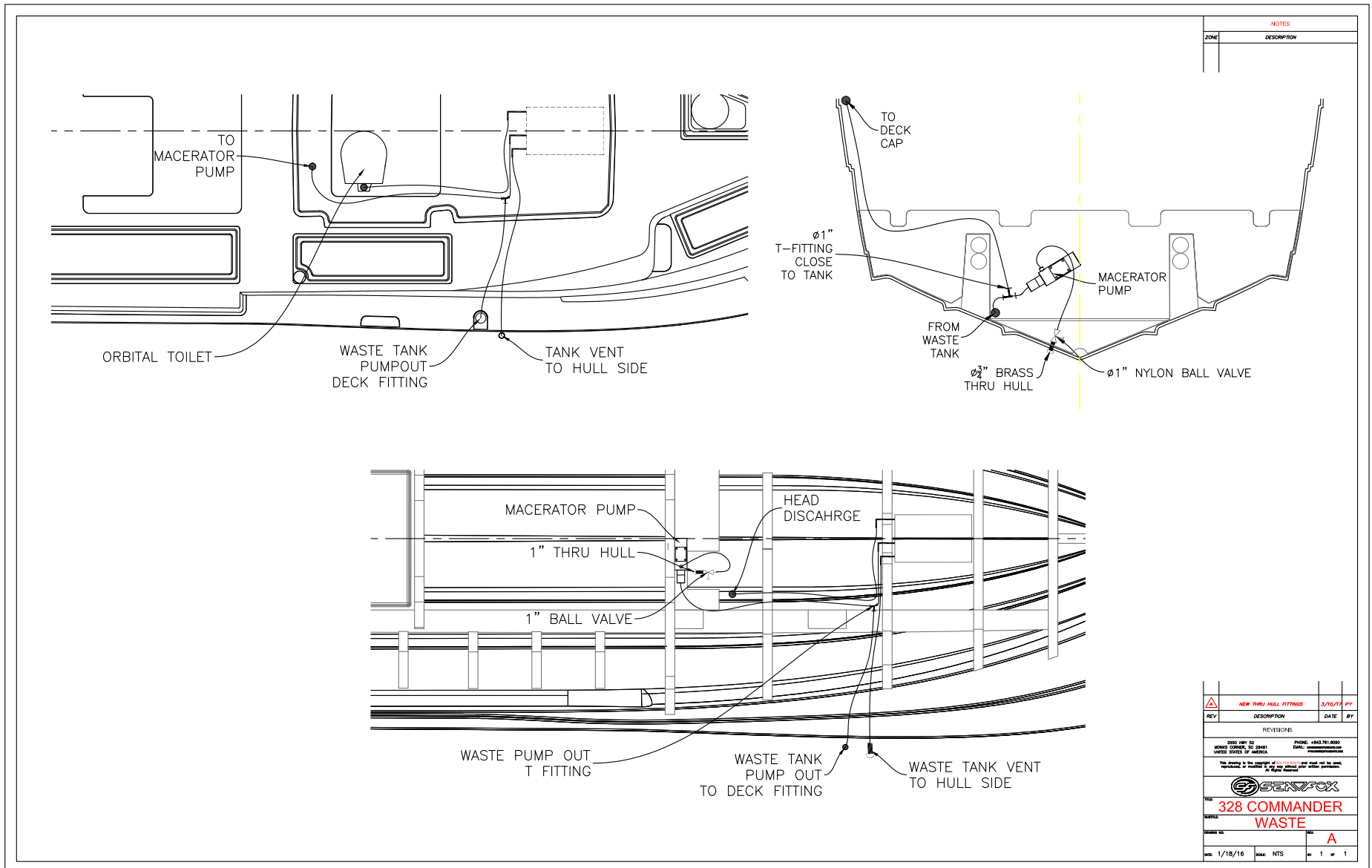
NOTES	
ZONE	DESCRIPTION

REV	DESCRIPTION	DATE	BY
REVISIONS			
<small>3220 HWY 02 UNITED STATES OF AMERICA PHONE: 1-847-761-8000 FAX: 1-847-761-8000 WWW.SEAFOXBOATS.COM</small>			
328 COMMANDER MISTER SYSTEM			
DATE	BY	#	
1/18/16	NTS	1 of 1	

COMMANDER RAW WATER SYSTEM



COMMANDER WASTE SYSTEM



NOTES	
ZONE	DESCRIPTION

REV	DESCRIPTION	DATE	BY

REVISIONS

3220 1871 02 PHONE: 1-847-761-8000
 18005 GARDEN ST. SUITE 2000 FAX: 847-761-8000
 UNITED STATES OF AMERICA WWW.SEAFOXBOATS.COM

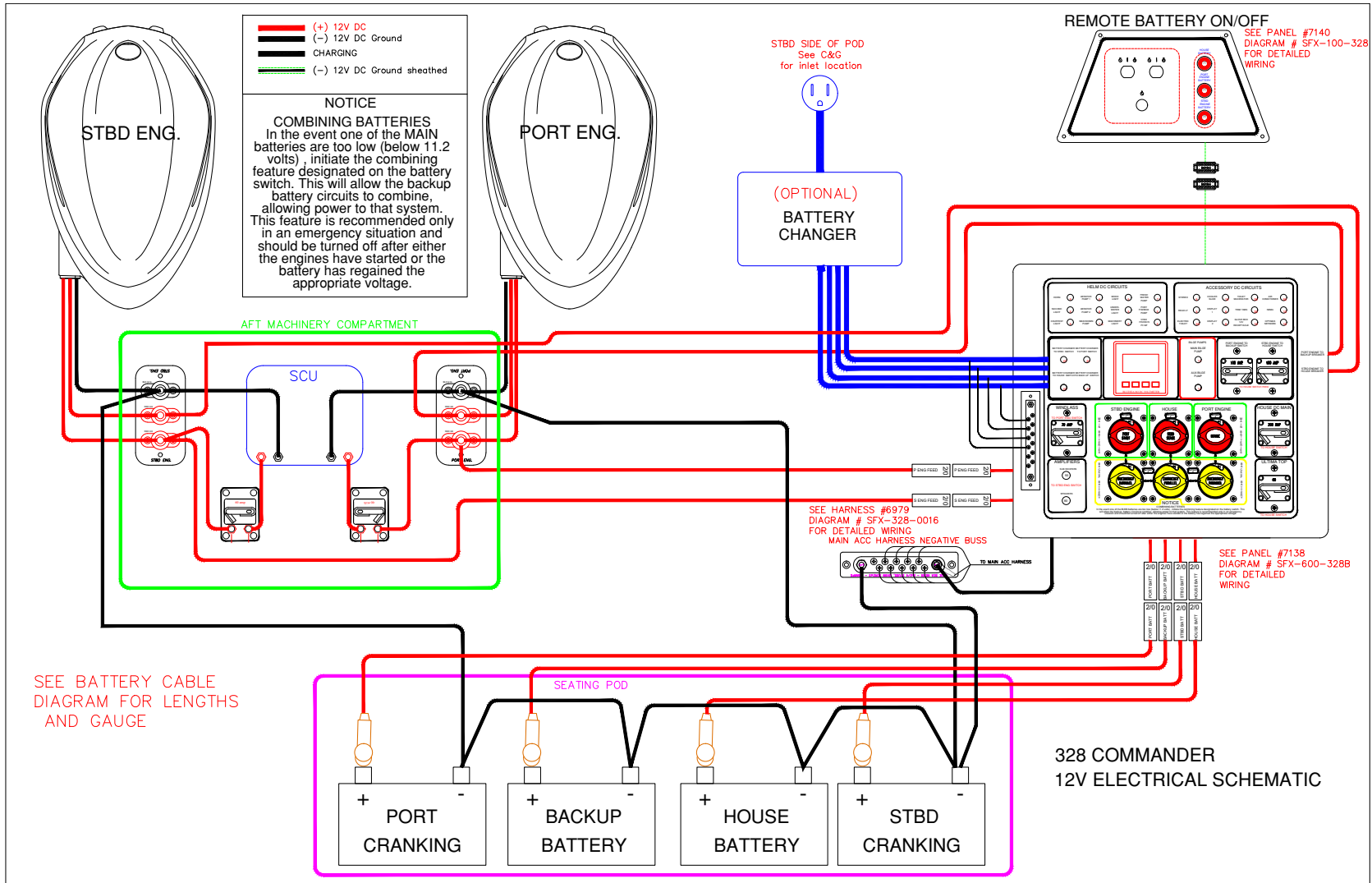
The drawing is the property of SeaFox Boats and shall not be used, reproduced, or transmitted in any form or by any means, electronic or mechanical, including photocopying, recording, or by any information storage and retrieval system, without the prior written permission of SeaFox Boats.

328 COMMANDER WASTE

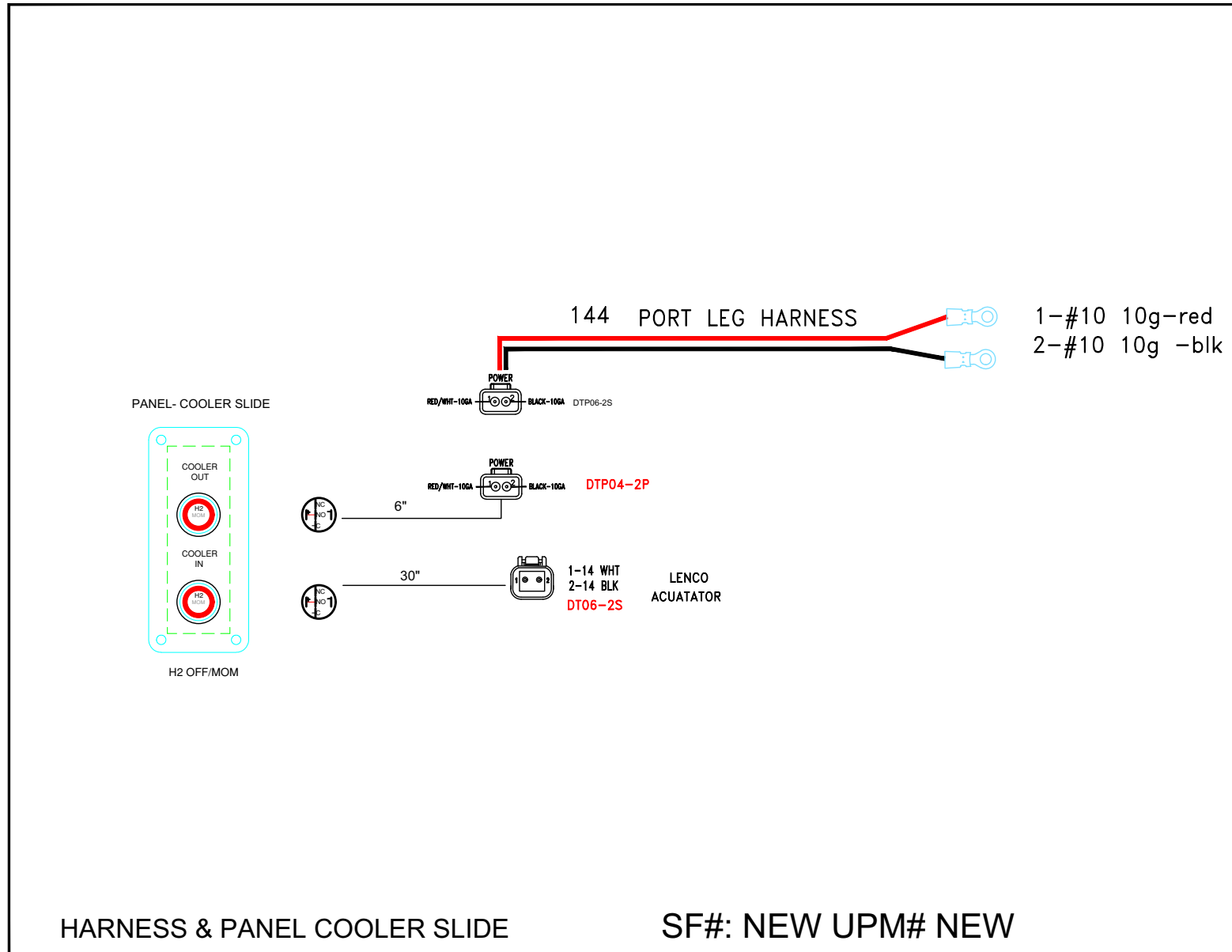
DATE: 1/18/16 DES: NTS REV: A OF: 1

ELECTRICAL SCHEMATICS

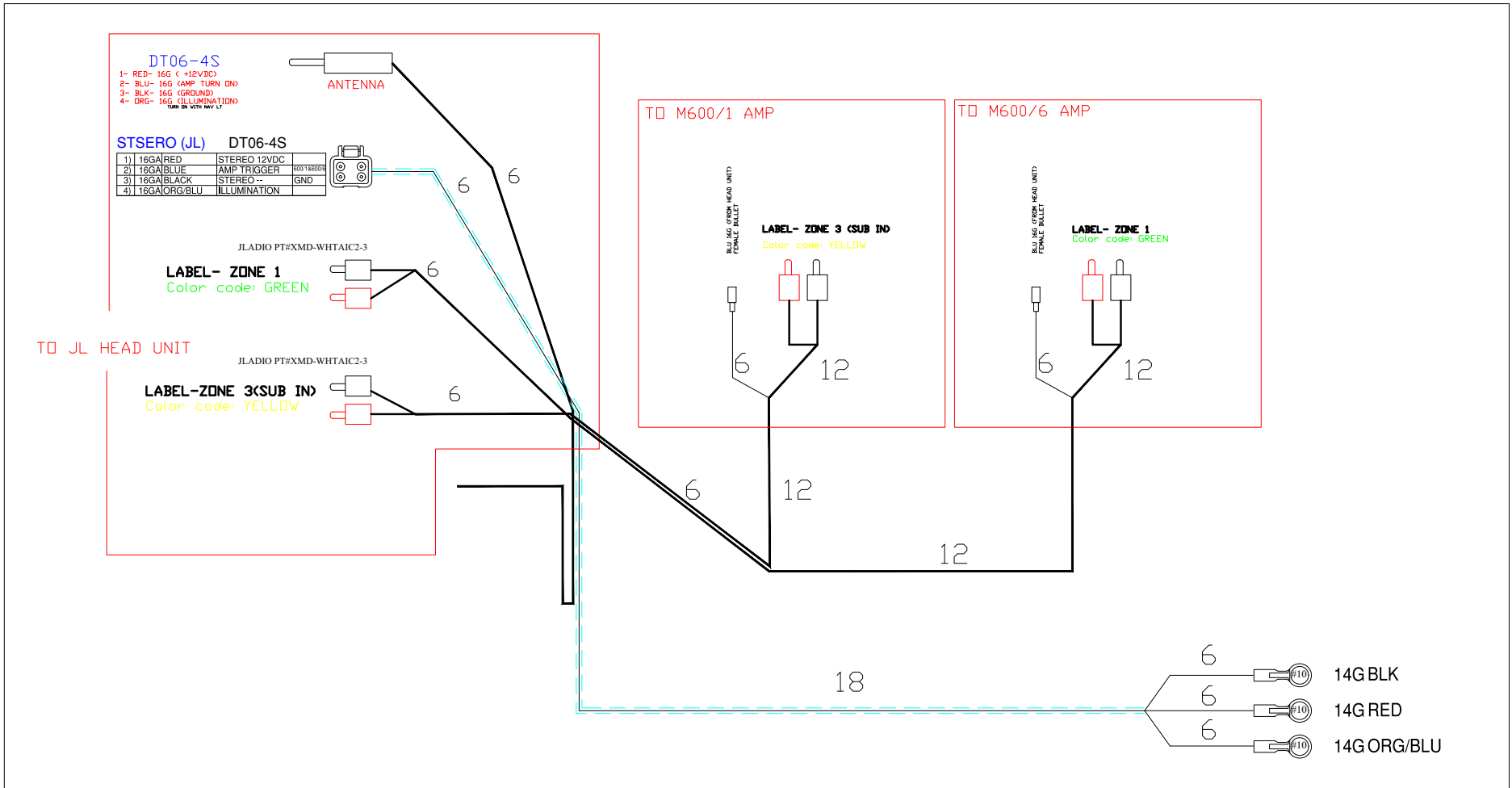
TWIN ENGINE WITH 4-BATTERY SETUP AND CHARGER



HARNESS & PANEL COOLER SLIDE

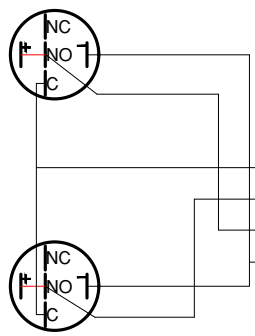
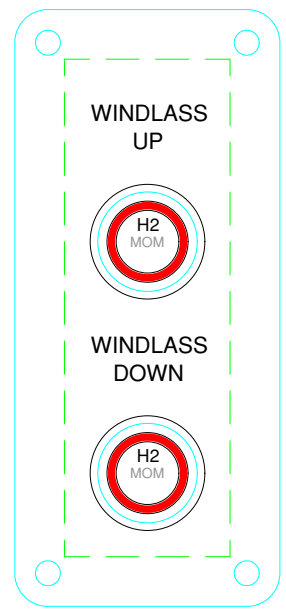


HARNESS JL STEREO



HARNES WINDLASS PANEL

REV. A	DATE



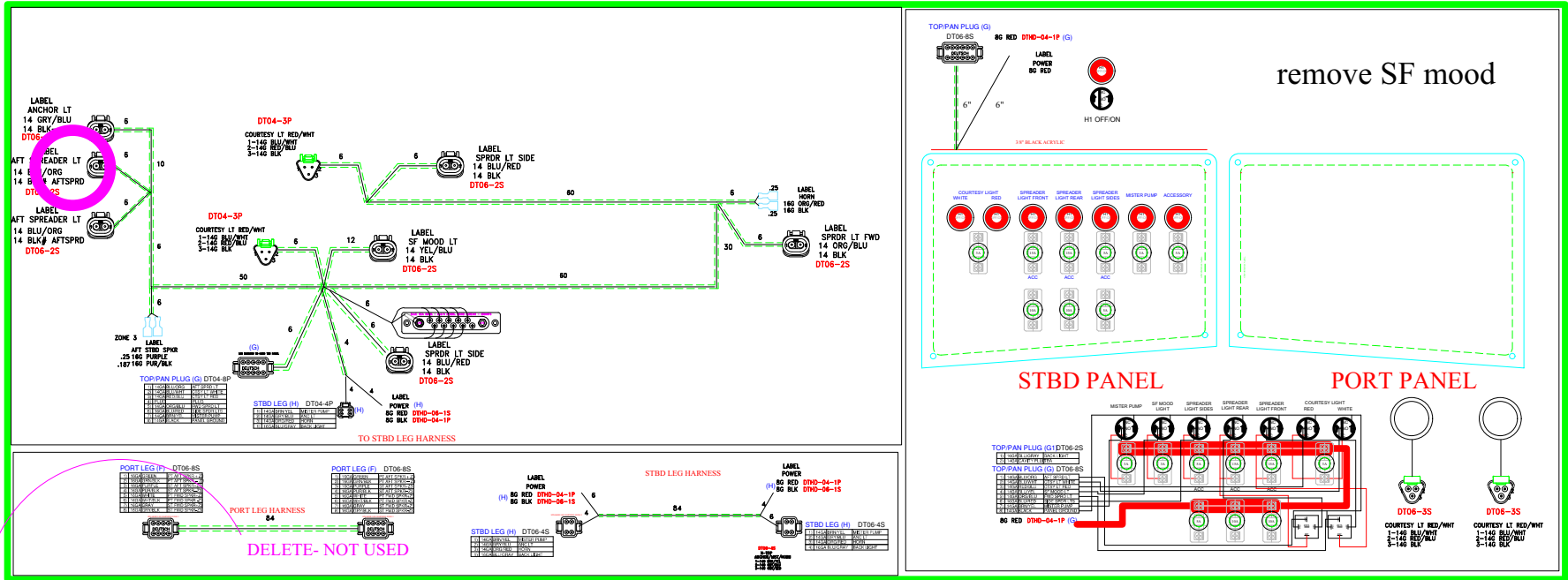
DECK PLUG (G) DT06-4S

1)	14GA	RED	SWITCH PWR
2)	14GA	GREEN	DOWN WINDLASS
3)	14GA	BLUE	UP WINDLASS
4)	14GA	BLACK	SWITCH GND

<p>6881 N.W. 73rd COURT Miami, FL 33196 Ph: 305-888-7708 Fax 305-888-7285</p>	SEAFOX 328		
	TITLE FWD WINDLASS PANEL		
	SCALE	3/30/2016	SHEET C SIMS

HARNES PANEL KIT

**SFX-305-328
HARNES/ PANEL KIT 328**

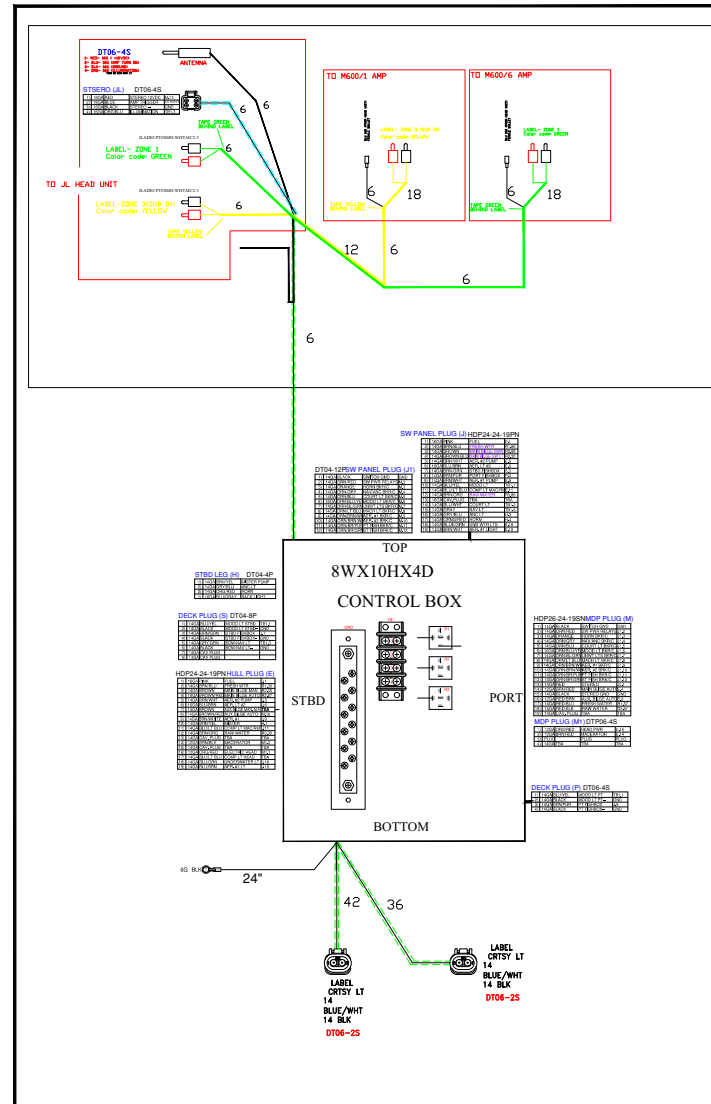


SFX-305-328A: 1) CHANGE FROM 3 WAY AND TWO WAY PLUG TO 4WAY PLUG FOR MISTER, NAV, BACK LIGHT AND HORN, CHANGE NOMINCLATURE FROM SF TO ACCESSORY
2) CHANGE NOMINCLATURE FROM SF TO ACCESSORY

SFX-305-328B: 1) REMOVE SPEAKER WIRING- NOT USED FORE JL AUDIO

CONTROL BOX

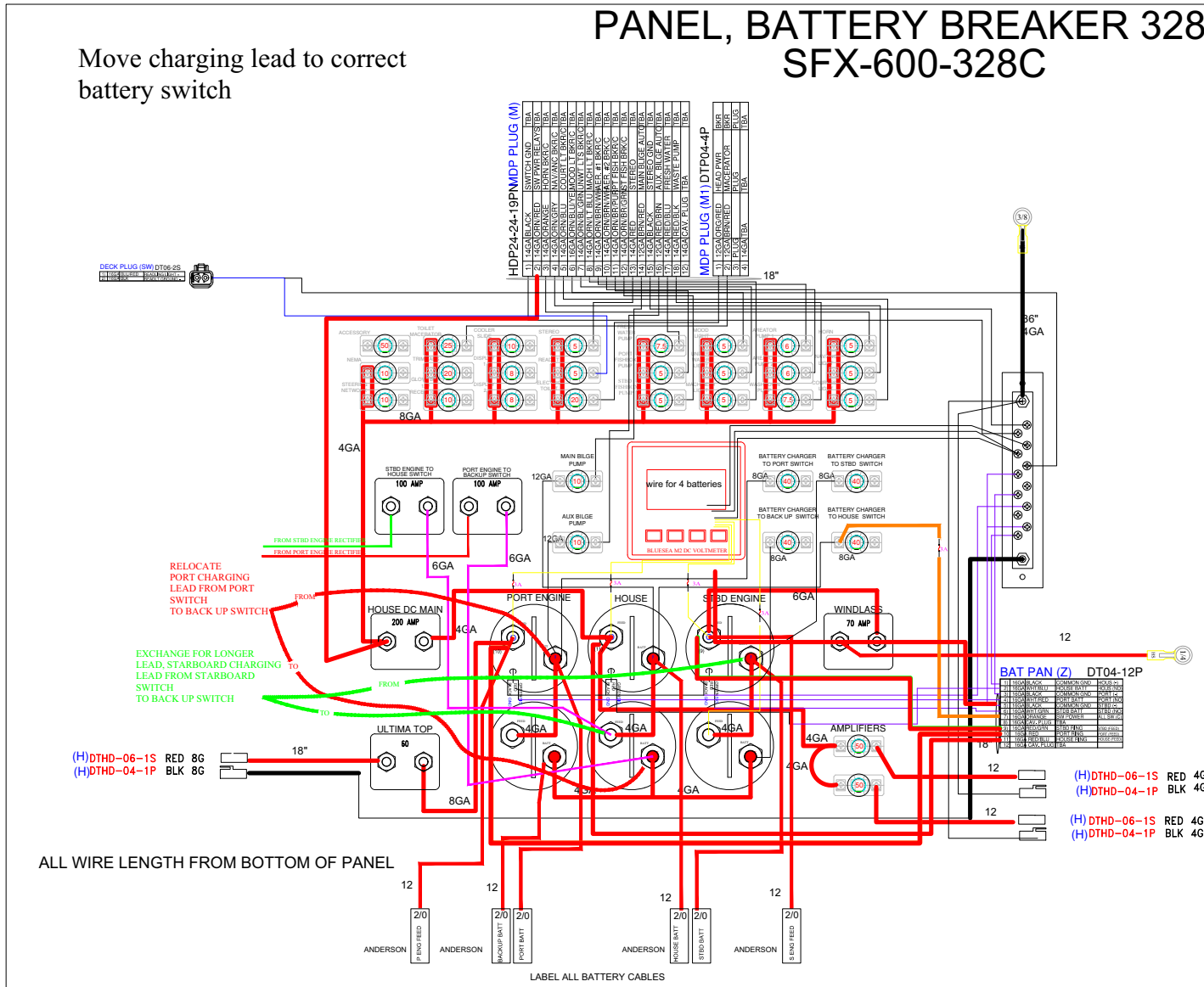
**SFX-900-328X
BOX, CONTROL 328**



PANEL BATTERY BREAKER

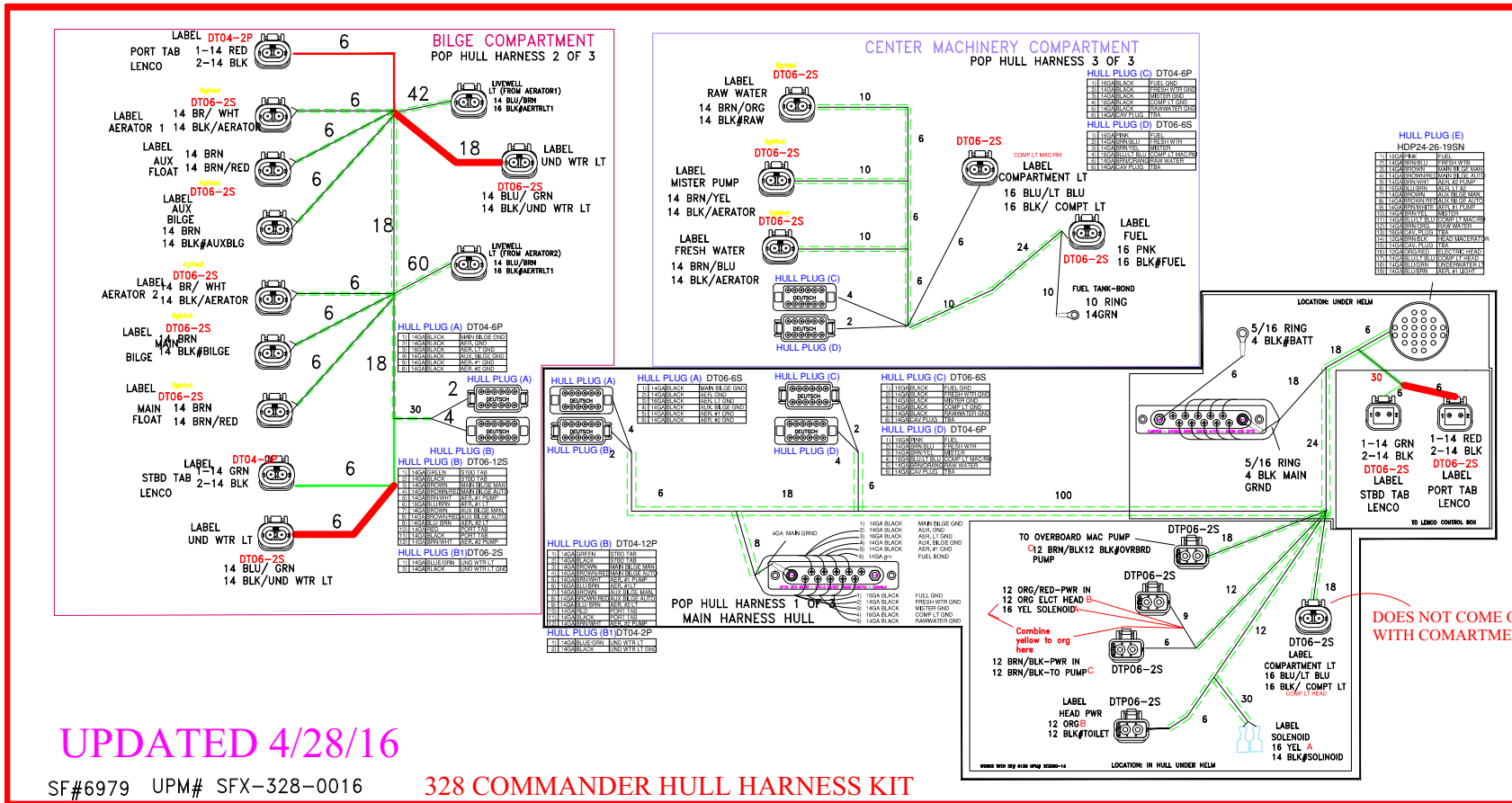
PANEL, BATTERY BREAKER 328 SFX-600-328C

Move charging lead to correct battery switch



HARNES ACC W/ LEN/ORB DEUTSCH (P/N 6979)

SFX-328-0016 HARNES, HULL KIT 328



UPDATED 4/28/16

SF#6979 UPM# SFX-328-0016

328 COMMANDER HULL HARNESS KIT

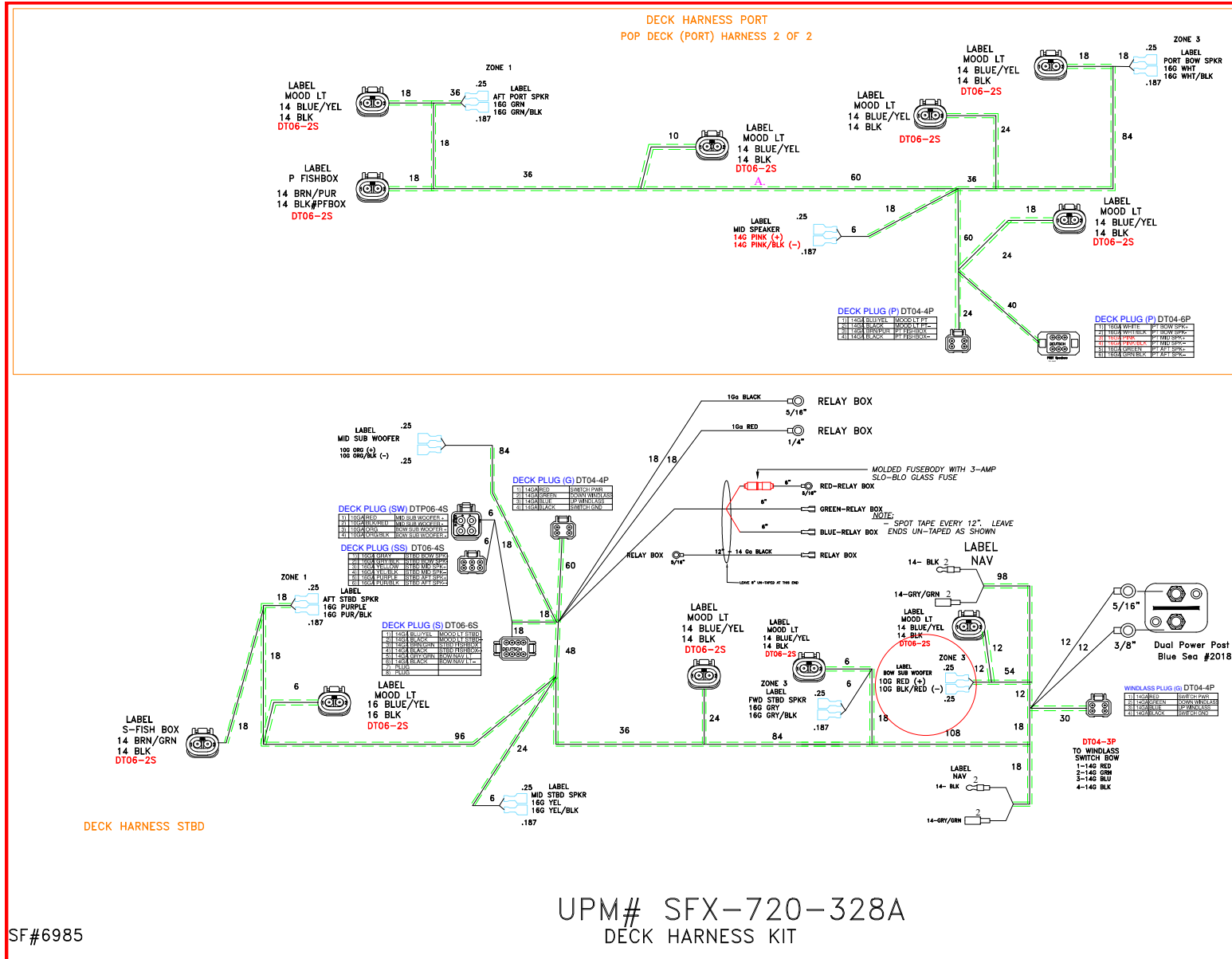
HARNESS BATTERY CABLE SET EPS (P/N 6980)

BATTERY CABLE SET HULL 328 SF# 6980 UPM# SFX-721-328B



must tag both ends

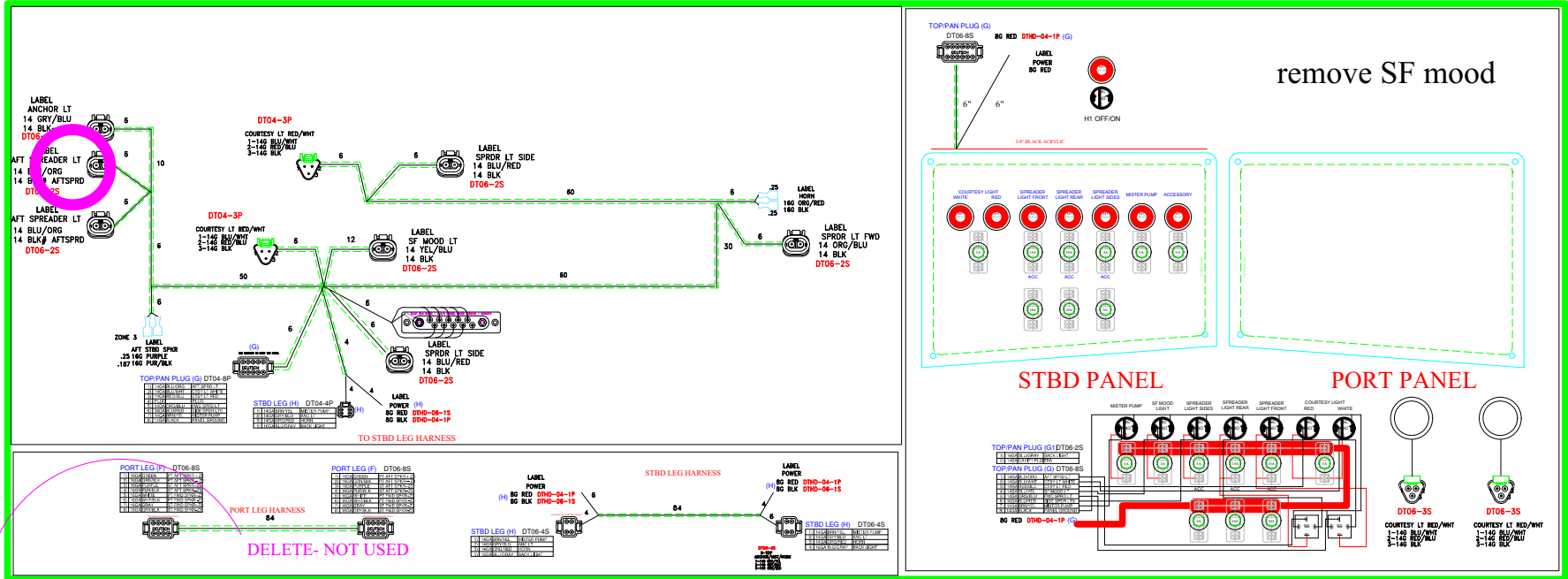
HARNES DECK (P/N 6985)



SF#6985

U PANEL SWITCH/HARNESS ULTIMA (P/N 6997)

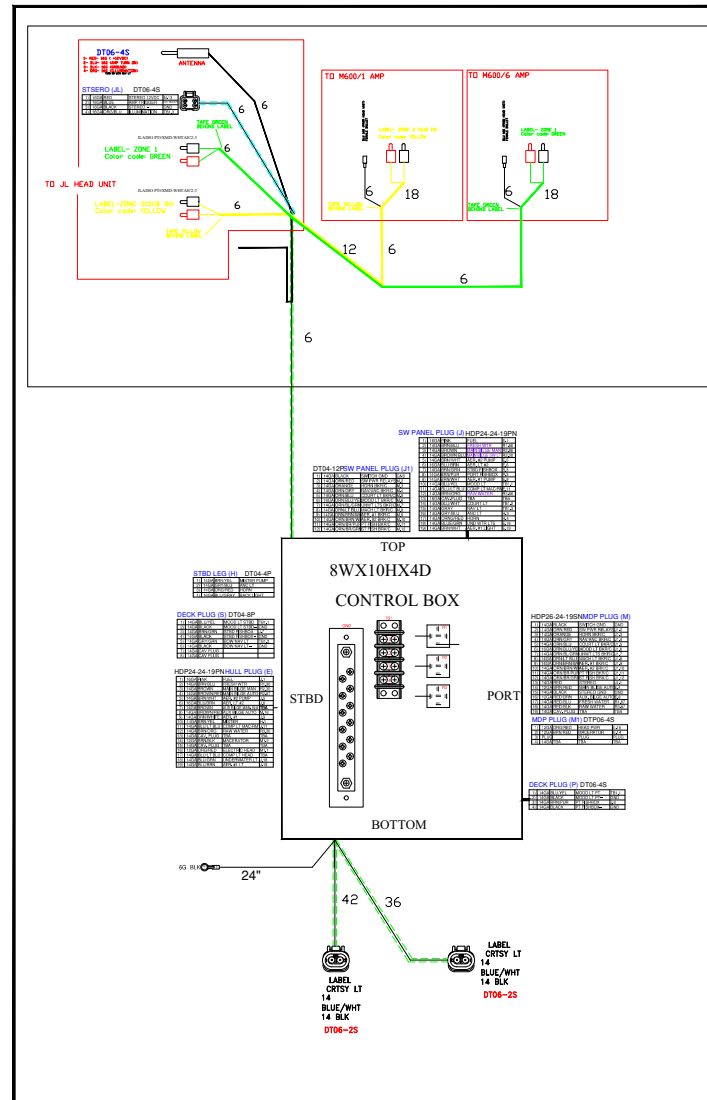
SFX-305-328
HARNESS/ PANEL KIT 328



- SFX-305-328A: 1) CHANGE FROM 3 WAY AND TWO WAY PLUG TO 4WAY PLUG FOR MISTER, NAV, BACK LIGHT AND HORN, CHANGE NOMINCLATURE FROM SF TO ACCESSORY
2) CHANGE NOMINCLATURE FROM SF TO ACCESSORY
- SFX-305-328B: 1) REMOVE SPEAKER WIRING- NOT USED FORE JL AUDIO

PANEL BOX JUNCTION CONSOLE (P/N 7137)

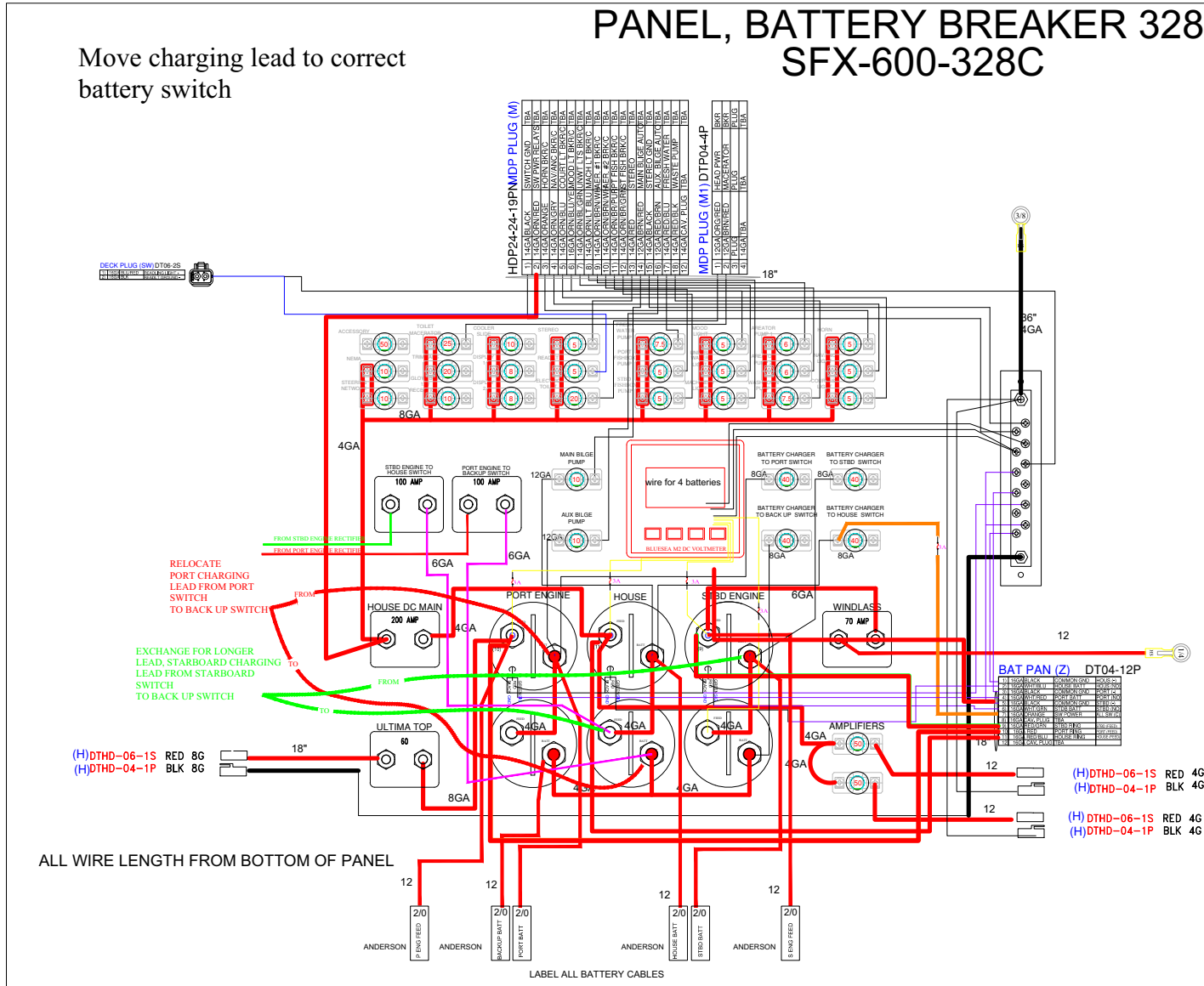
SFX-900-328X
BOX, CONTROL 328



PANEL BREAKER CON W/ BATTERY SWITCH (P/N 7138)

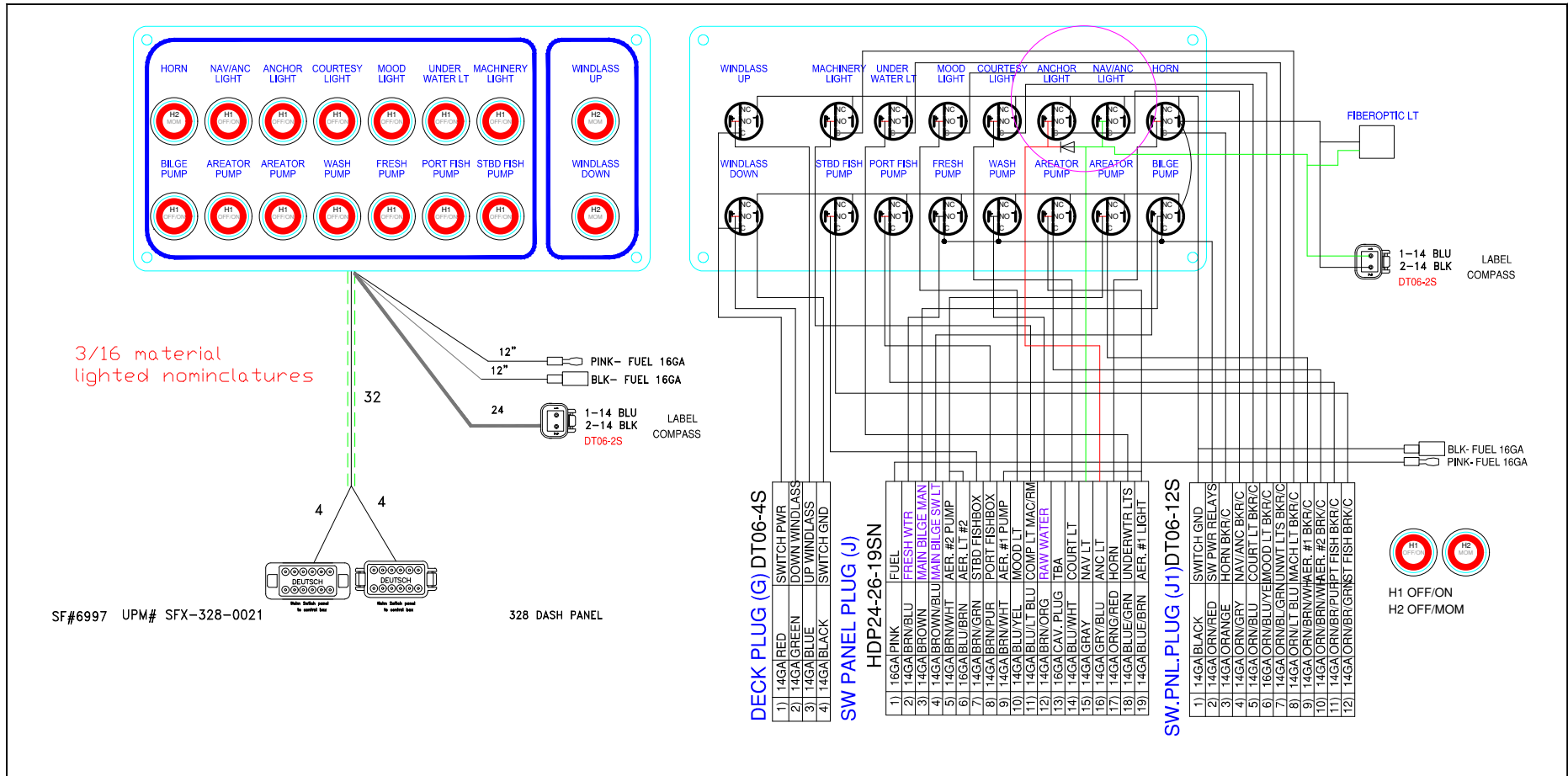
PANEL, BATTERY BREAKER 328
SFX-600-328C

Move charging lead to correct battery switch

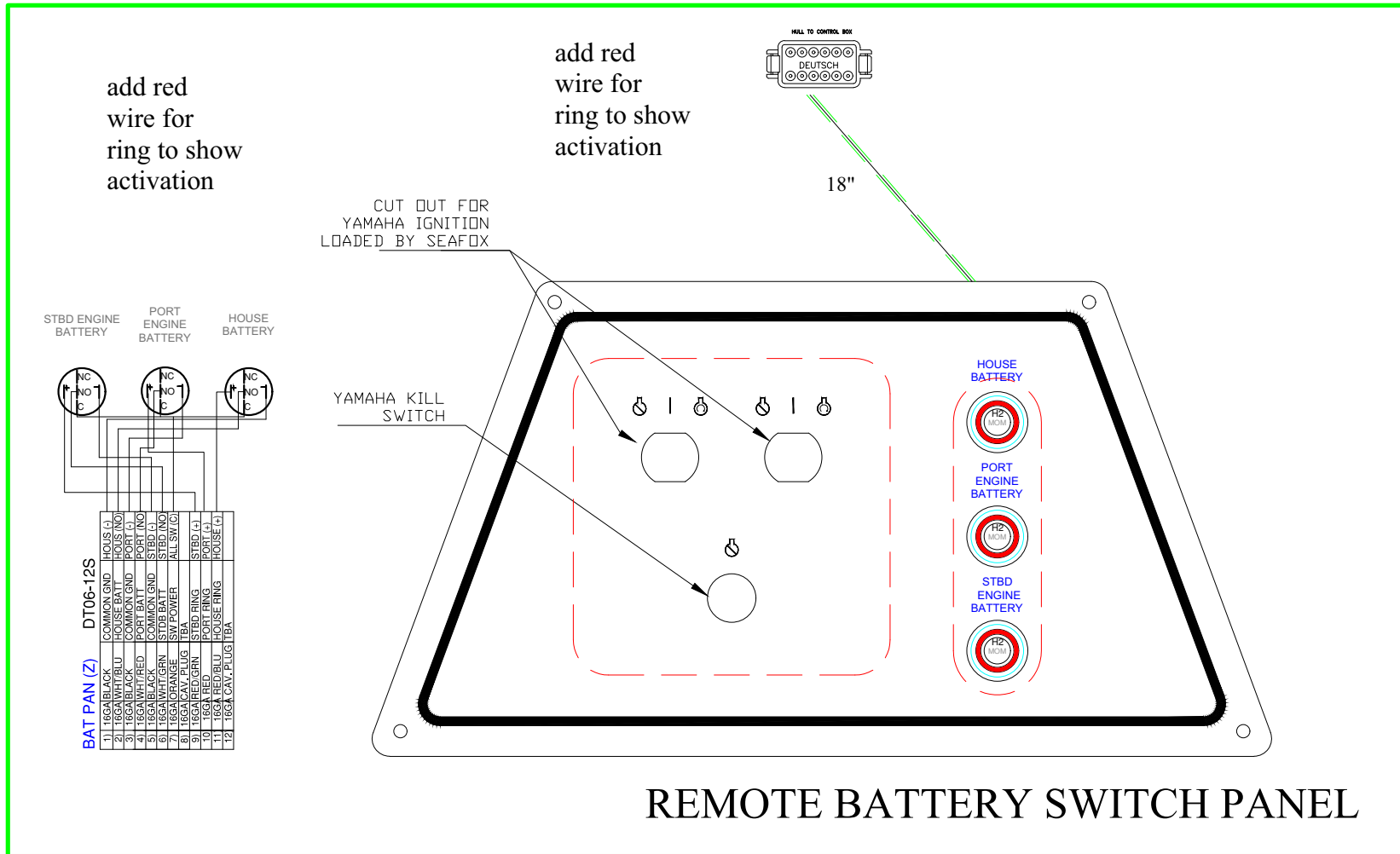


PANEL SWITCH DEUTSCH (P/N 7139)

PANEL, HELM SWITCH 328 SFX-400-328

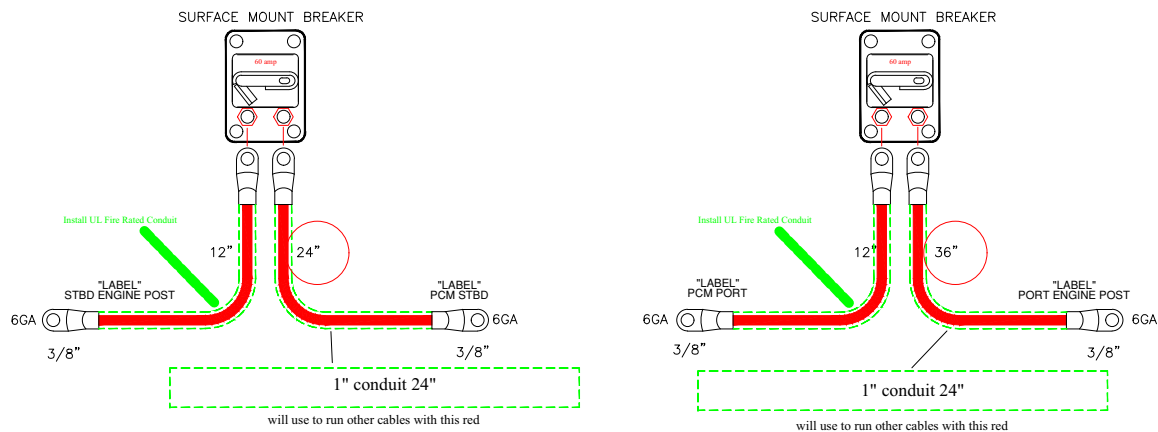


PANEL, KEY BATT 328 SFX-100-328



BREAKER KIT - 60-AMP EPS (P/N 7378)

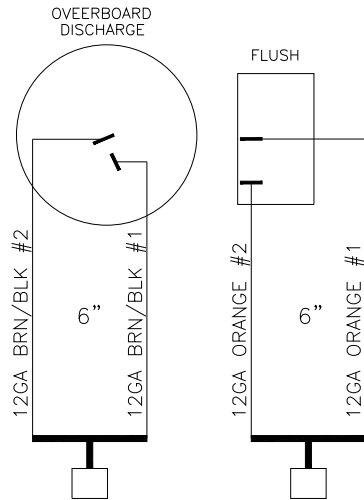
BREAKER KIT- SEASTAR EPS-60AMP- SFX-730-328A



NOTES:

- (1) ALL RING TERMINALS ARE TO BE MECHANICAL CRIMPED AND ADHESIVE-LINED HEAT SHRUNK
- (2) TAG ALL CABLES AS SHOWN WITHIN 1-1/2" OF TERMINALS
- (3) CABLE TIE "TAG" (SHOWN ON TOP) TO BATTERY KIT.
- (4) BOX COMPLETED BATTERY KIT ASSEMBLY.

HEAD PANEL SWITCH ORB (P/N 6136) – OPTIONAL

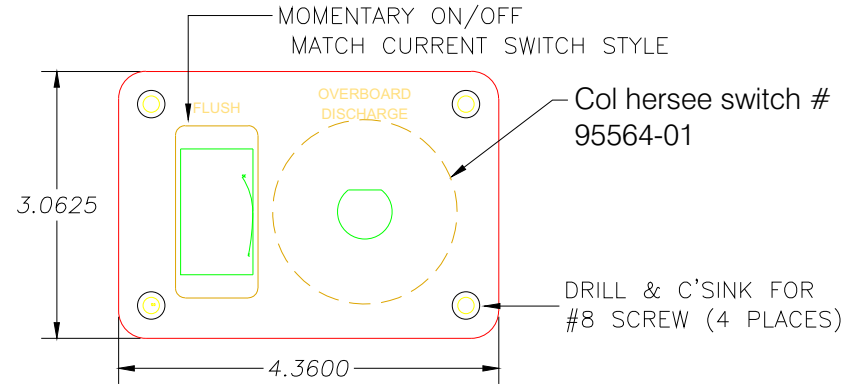


- 1. 12GA BRN/BLK #1
- 2. 12GA BRN/BLK #2
- 1. 12GA ORANGE #1
- 2. 12GA ORANGE #2

MATCH CONNECTORS TO NEW
256CC/WA HARNESS

NOTES:

- (1) PAINT TEXTURED BLACK
- (2) SCREEN WHITE

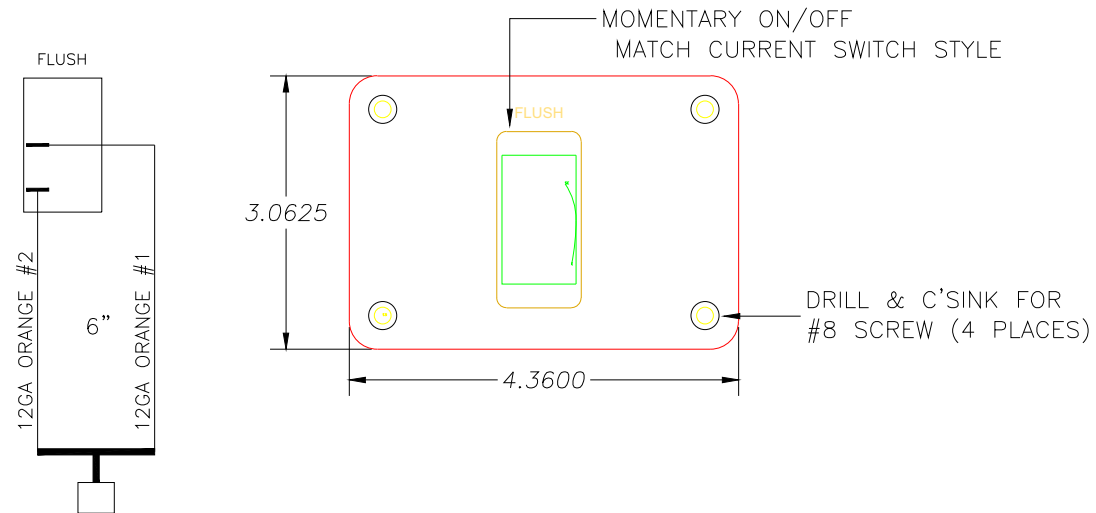


ASSEMBLY NOTE:
Inject every push-on connector with dielectric grease prior to attachment to switch.

SEAFox PT# 6136

Quantity	648-ALUMINUM - 6061-T6 ALUMINUM	
	Material	
Work Order Number	ELECTRIC FLUSH-DISCHARGE SWITCH PANEL - WHITE- BLACK LETTERS	
	File Number SFX300-14	
Due Date	SEAFOX BOAT COMPANY	
	07-28-15	
	Faceplate Number	Panel Number

HEAD PANEL SWITCH ORB (P/N 6870)



- 1. 12GA ORANGE #1
- 2. 12GA ORANGE #2

MATCH CONNECTORS TO NEW 256CC/WA HARNESS

- NOTES:
- (1) PAINT TEXTURED BLACK
 - (2) SCREEN WHITE

ASSEMBLY NOTE:
Inject every push-on connector with dielectric grease prior to attachment to switch.

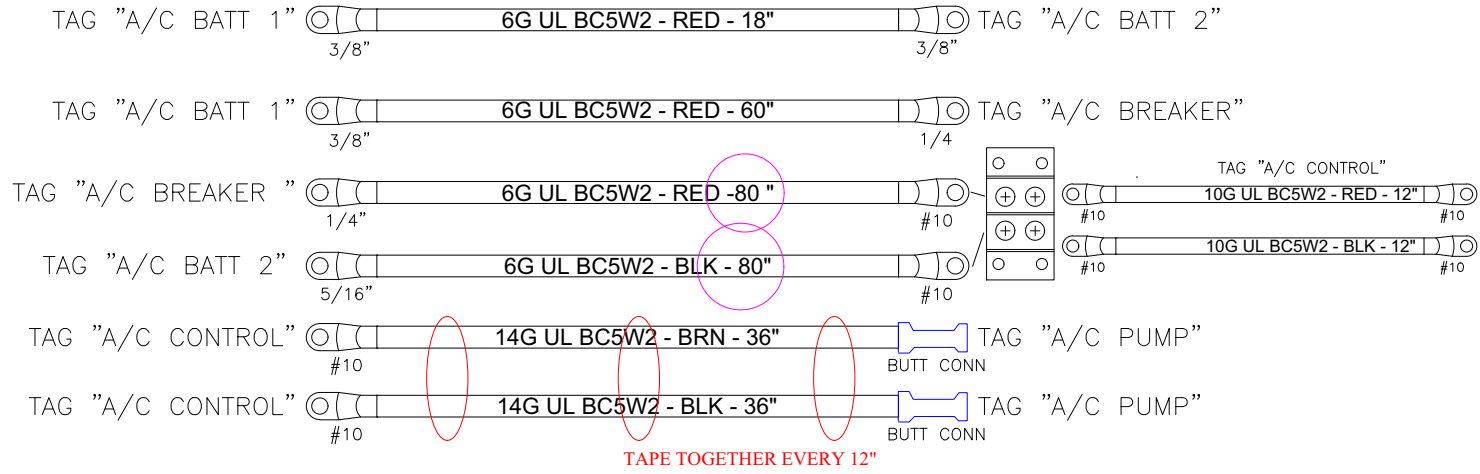
SF# 6870 UPM# SFX-028-11

Quantity	648-ALUMINUM - 6061-T6 ALUMINUM	
	Material	
Work Order Number	ELECTRIC FLUSH SWITCH PANEL - BLACK- WHITE LETTERS	
	File Number	
	SEAFOX BOAT COMPANY	
Due Date	07-28-15	
	Faceplate Number	Panel Number

CABLE AC SET (P/N 7141) – OPTIONAL

SFX-750-328A- EXTEND A/C BREAKER- RED, AND A/C BATT 2 EXCHANGE TO 60" FRO 36"
 SFX-750-328B- EXTEND A/C BREAKER- RED, AND A/C BATT 2 EXCHANGE TO 80" FRO 60"

CABLE, AC SET 328



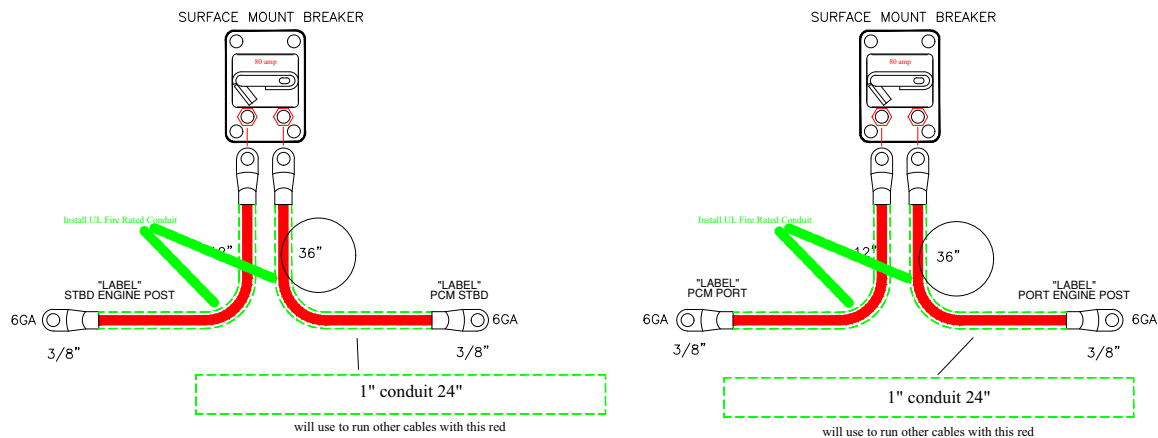
AIR CONDITIONER CABLE SET

NOTES:

- (1) ALL RING TERMINALS ARE TO BE MECHANICAL CRIMPED AND ADHESIVE-LINED HEAT SHRUNK
- (2) TAG ALL CABLES AS SHOWN WITHIN 1-1/2" OF TERMINALS
- (3) CABLE TIE "TAG" (SHOWN ON TOP) TO BATTERY KIT.
- (4) BOX COMPLETED BATTERY KIT ASSEMBLY.

BREAKER ASSEMBLY - 80-AMP HELM MASTER (P/N 7379) – OPTIONAL

BREAKER KIT- HELM-MASTER-80AMP- SFX-735-328A



NOTES:

- (1) ALL RING TERMINALS ARE TO BE MECHANICAL CRIMPED AND ADHESIVE-LINED HEAT SHRUNK
- (2) TAG ALL CABLES AS SHOWN WITHIN 1-1/2" OF TERMINALS
- (3) CABLE TIE "TAG" (SHOWN ON TOP) TO BATTERY KIT.
- (4) BOX COMPLETED BATTERY KIT ASSEMBLY.



This Page Intentionally Left Blank



Sea Fox Boat Company, Inc.
2550 Highway 52
Moncks Corner, SC 29461-5024

Telephone: 843-761-6090
www.seafoxboats.com

Ken Cook Co.
Printed in U.S.A.
Rev 0819