



Owner's Manual Supplement

www.SeaFoxBoats.com

SEA FOX BOAT'S DISCLAIMER

The following Owner's Manual is provided for information and educational purposes only and is not intended to offer or provide legal advice or create a contractual relationship between Sea Fox Boat Company and the owner of any Sea Fox brand vessel. Please beware that as a vessel owner you have non-delegable responsibilities regarding the safety, maintenance, fitness, and operation of your vessel and the extent of such responsibilities is ultimately determined by Federal law and regulations, the general maritime law of the United States, the laws and regulations of the states and territories of the United States, or the laws and regulations of the country where you operate your vessel. To fully understand your responsibilities as a vessel owner, and before operating or letting any third-party operate your vessel, we recommend that you consult the services of a qualified lawyer in admiralty and maritime law.

TABLE OF CONTENTS

Introduction	3	Harness & Panel Cooler Slide	17
Specifications	3	Harness – JL Stereo	18
Designated Occupant Seating	4	Harness Windlass Panel	19
Plumbing Schematics	5	Harness ACC w/ Len/Orb Deutsch (P/N 6979)	20
Commander Aquarium Livewell System	5	Harness Battery Cable Set EPS (P/N 6980)	21
Commander Bilge System	6	Harness Deck (P/N 6985)	22
Commander Center Livewell System	7	U Panel Switch/Harness Ultima (P/N 6997)	23
Commander Drains, Hull	8	Panel Box Junction Console (P/N 7137)	24
Commander Drains, Hull (Continued)	9	Panel Breaker Con w/ Battery Switch (P/N 7138)	25
Commander Drains, Hull (Continued)	10	Panel Switch Deutsch (P/N 7139)	26
Commander Fresh Water System	11	Panel Switch, Remote Battery Helm (P/N 7332) – Optional	27
Commander Fuel System	12	Breaker Kit - 60-Amp EPS (P/N 7378)	28
Commander Mister Pump System	13	Electric Flush Discharge Switch Panel (P/N 6136) – Optional	29
Commander Raw Water System	14	Electric Flush Switch Panel (P/N 6870) – Optional	30
Commander Waste System	15	Breaker Kit 80-Amp – Helm Master (P/N 7379) – Optional	31
Electrical Schematics	16		
Twin Engine with 4-Battery Setup and Charger	16		



This Page Intentionally Left Blank

INTRODUCTION

Congratulations and Welcome Aboard! With so many boat brands to choose from, we want to congratulate you on your decision to choose Sea Fox Boats. For more than 24 years, Sea Fox offers the finest hand-crafted saltwater boats carefully balanced with the build-quality, features, styling and performance for the fairest price. Our passion for boating is evident in every model we make and we appreciate that you've noticed the Sea Fox difference.

We share your love for the moments spent on the water with friends and family, which is why every Sea Fox boat offers a unique blend of fishing/family options, technologies and innovative features. Your choice of a Sea Fox affirms that you have performed your research and compared the value of your model with the competition.

Whether you are new to the boating lifestyle or an old salt, we ask that **you and all other operators** read the owner's manual, this supplement, and all other literature provided with the boat **before** operating the boat or any equipment. We also recommend that all operators enroll in a boating safety course available online - see References and Contact Information in this section for education resources online.

This supplement contains model-specific information not included with the owner's manual. This manual is not intended to be a replacement for specific product literature provided by engine, accessory or other major equipment manufacturers, but rather to supplement that information.

Because of our philosophy of continuous product improvement, this manual serves as a general guide only, so the specifications and illustrations used may not match the equipment on your boat and are intended only as general reference views.

We welcome you to the Sea Fox family and wish you many years of boating enjoyment!

SPECIFICATIONS

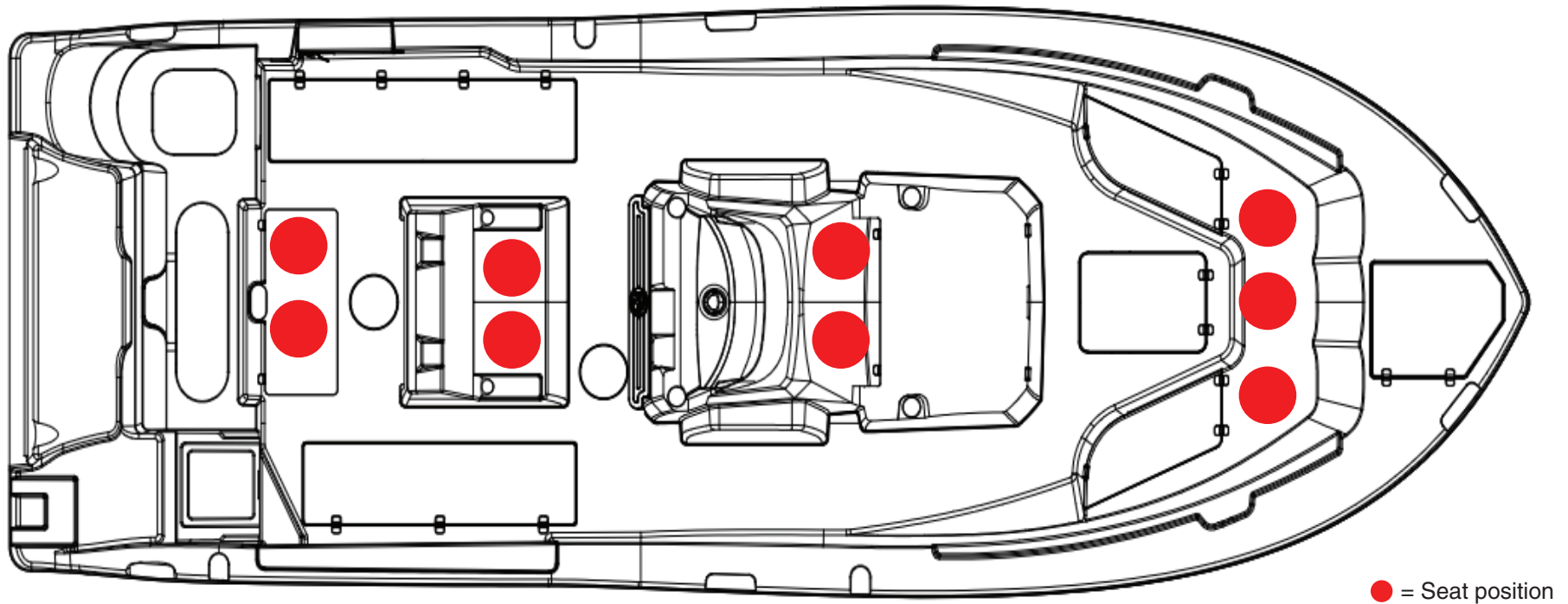
Max. Weight Capacity	Yacht Certification
Persons	Yacht Certification
Persons Weight	Yacht Certification
Max. HP	600 hp (447 kw)
L.O.A.	28' (8.5 m)
Beam	9' 8" (2.9 m)
Draft	18 in. (0.46 m)
Height, Keel to Top (Light Folded)	*
Bridge Clearance Hard Top	100 in. (2.54 m)
Max. Weight Boat (w/ Fluids, Largest HP)	9240 lbs (4191 kg)
Fuel Tank Capacity	186 gal (700 L)
Freshwater Tank Capacity	26 gal (98 L)
Holding Tank Capacity	12 gal (45 L)

* Keel to Top - 118 in. (3 m), W/outriggers - 121 in. (3.07 m), W/radar - 122 in. (3.10 m)



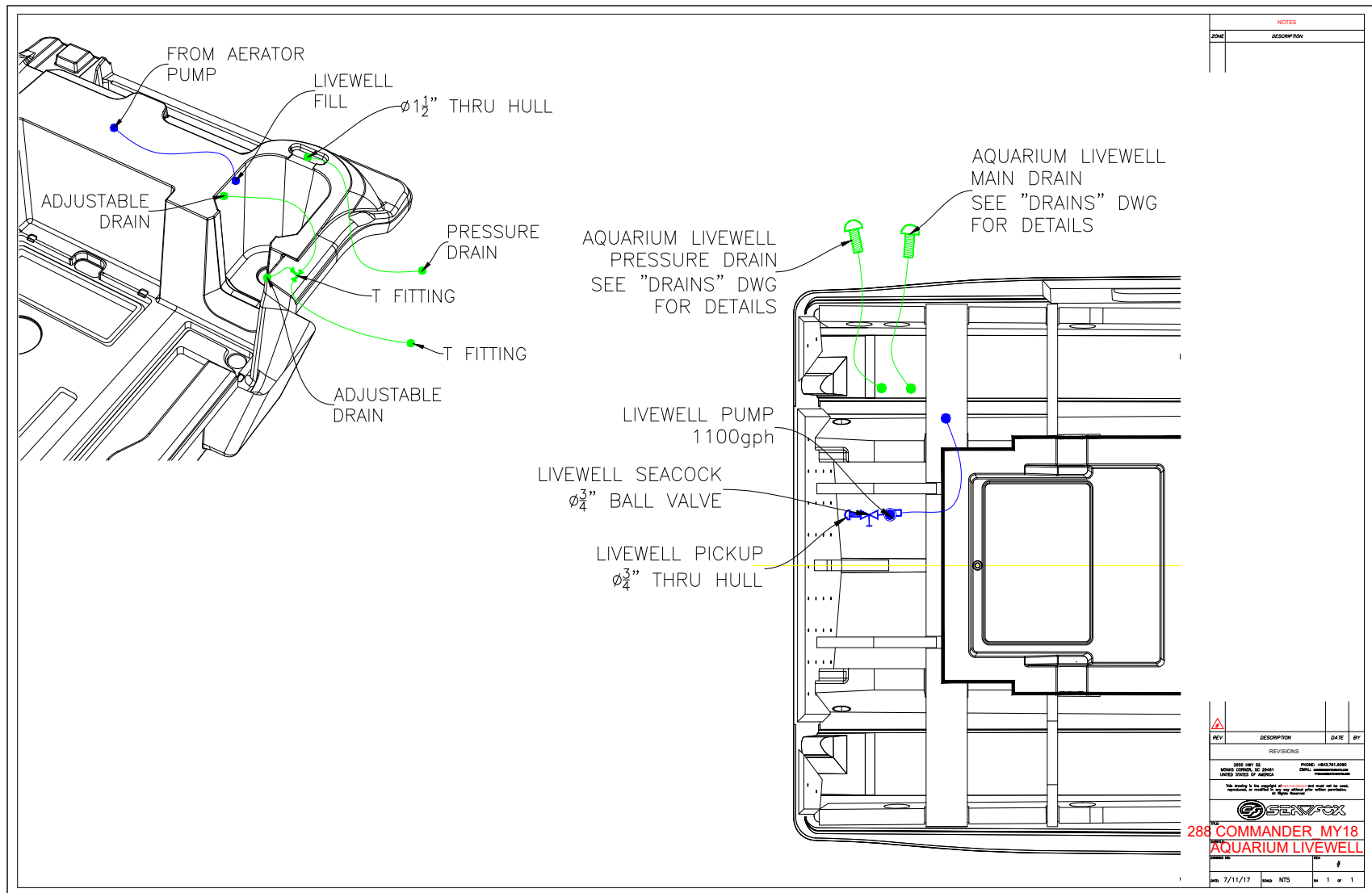
DESIGNATED OCCUPANT SEATING

Be sure all passengers are properly seated in designated seating positions and not riding on the bow, bow pulpit, deck, gunwale or rear sun deck while underway. Passengers must use hand-holds and use caution when riding in the bow. Move to the aft passenger seats during rough water operation or if visibility is restricted.

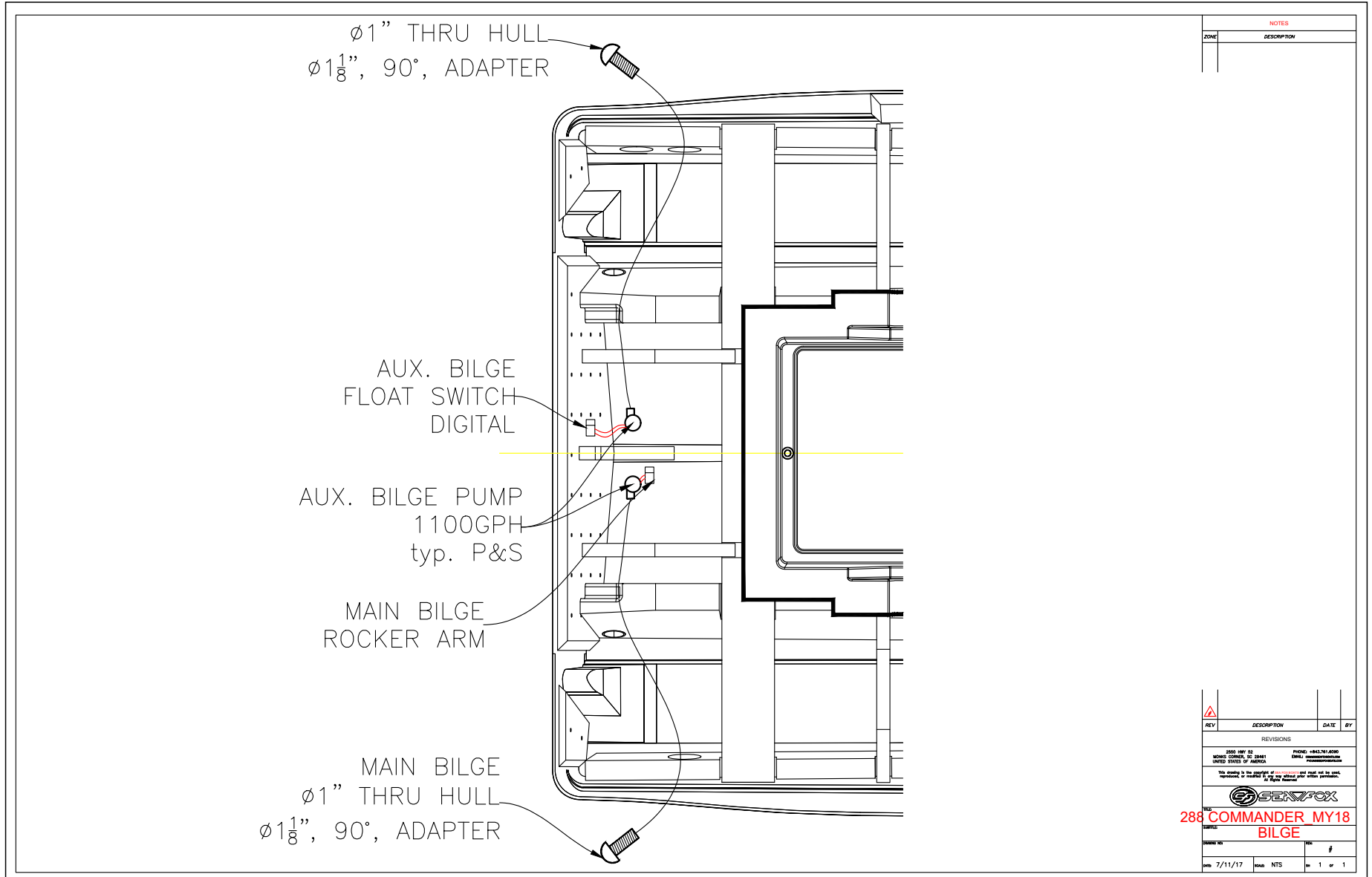


PLUMBING SCHEMATICS

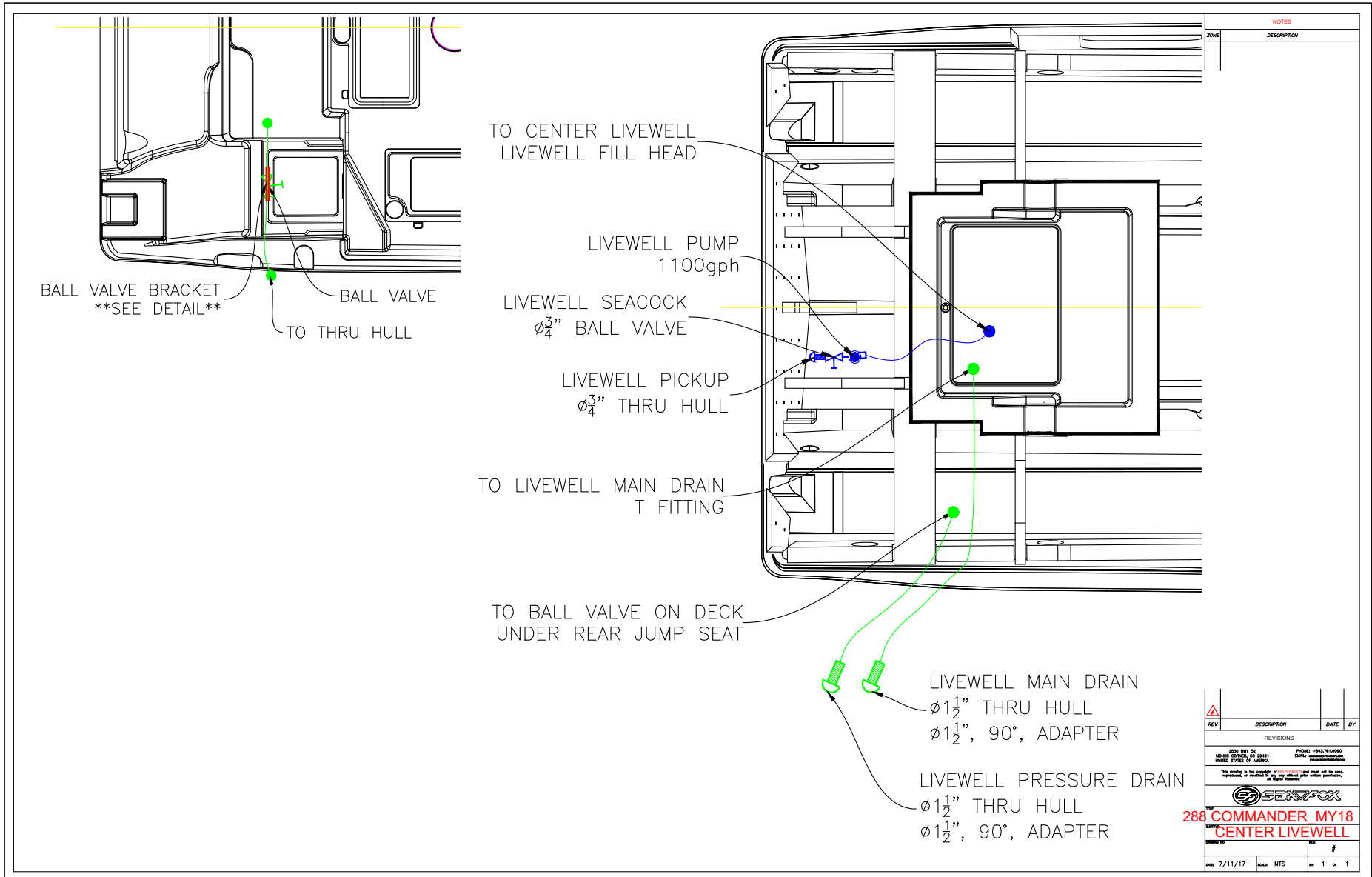
COMMANDER AQUARIUM LIVEWELL SYSTEM



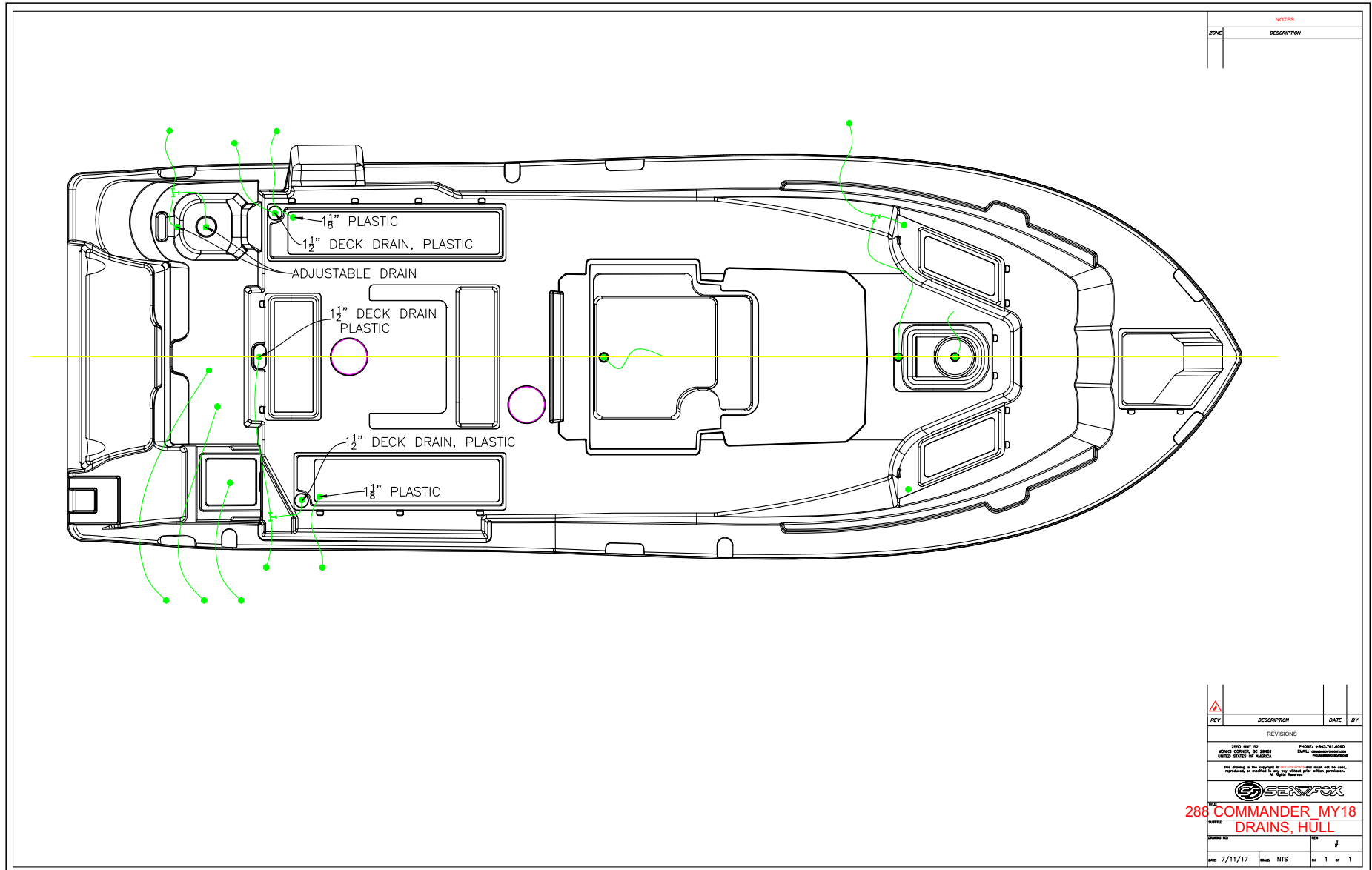
COMMANDER BILGE SYSTEM



COMMANDER CENTER LIVEWELL SYSTEM



COMMANDER DRAINS, HULL



NOTES	
ZONE	DESCRIPTION

REV	DESCRIPTION	DATE	BY

REVISIONS

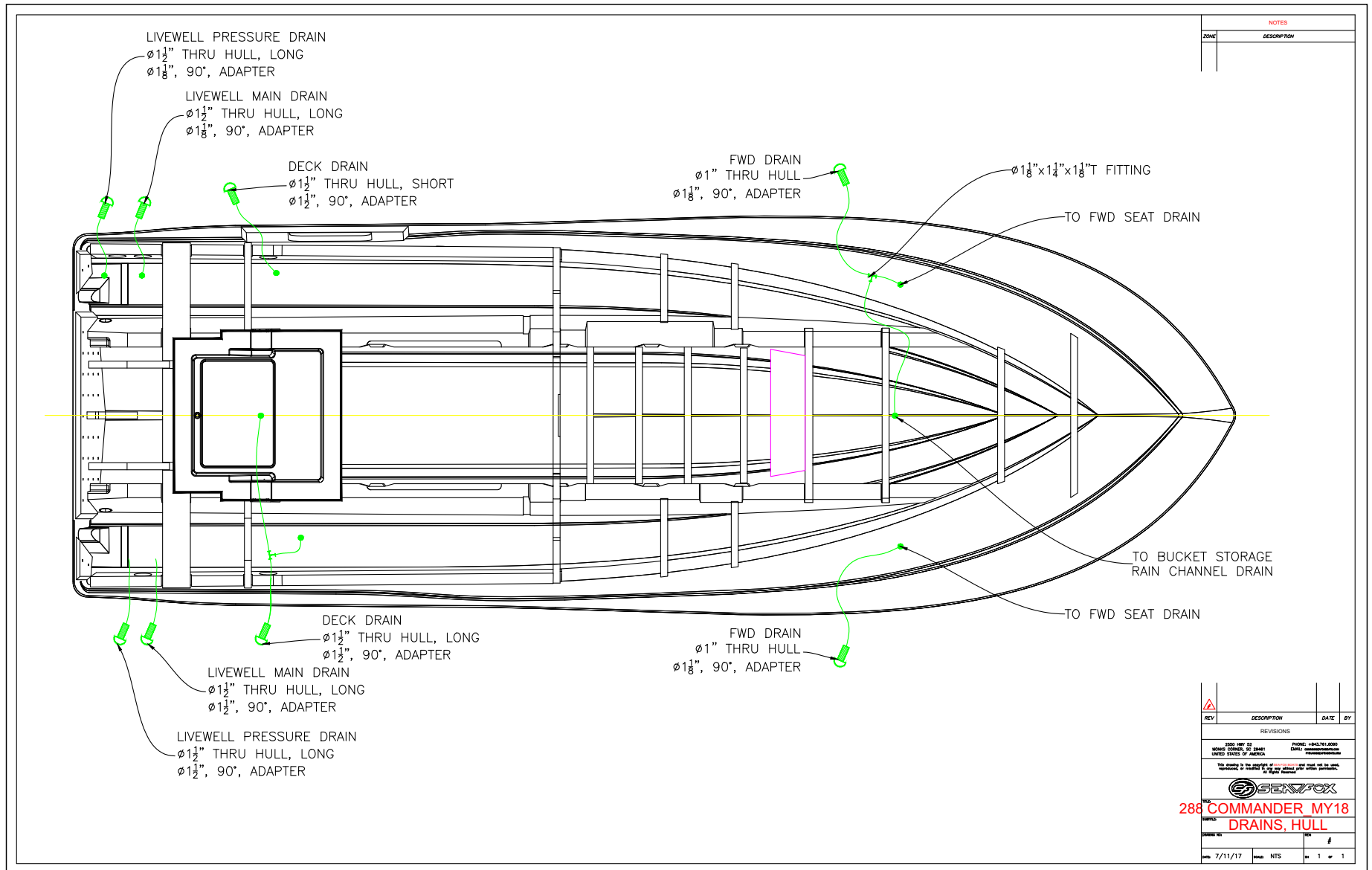
2008 REV 02 PART NO. 1443761-0010
 SEAFOX CORP. 20 29441 EMAIL: info@seafoxboats.com
 UNITED STATES OF AMERICA WWW.SEAFOXBOATS.COM

This drawing is the property of SEAFOX and shall not be used, reproduced or modified in any way without prior written permission.

288 COMMANDER_MY18
 DRAINS, HULL

DATE: 7/11/17 SHEET: MTS OF 1 OF 1

COMMANDER DRAINS, HULL (CONTINUED)



NOTES	
ZONE	DESCRIPTION

REV	DESCRIPTION	DATE	BY

REVISIONS

3000 WEST 32
 WOODS CROSS, NC 28411
 UNITED STATES OF AMERICA

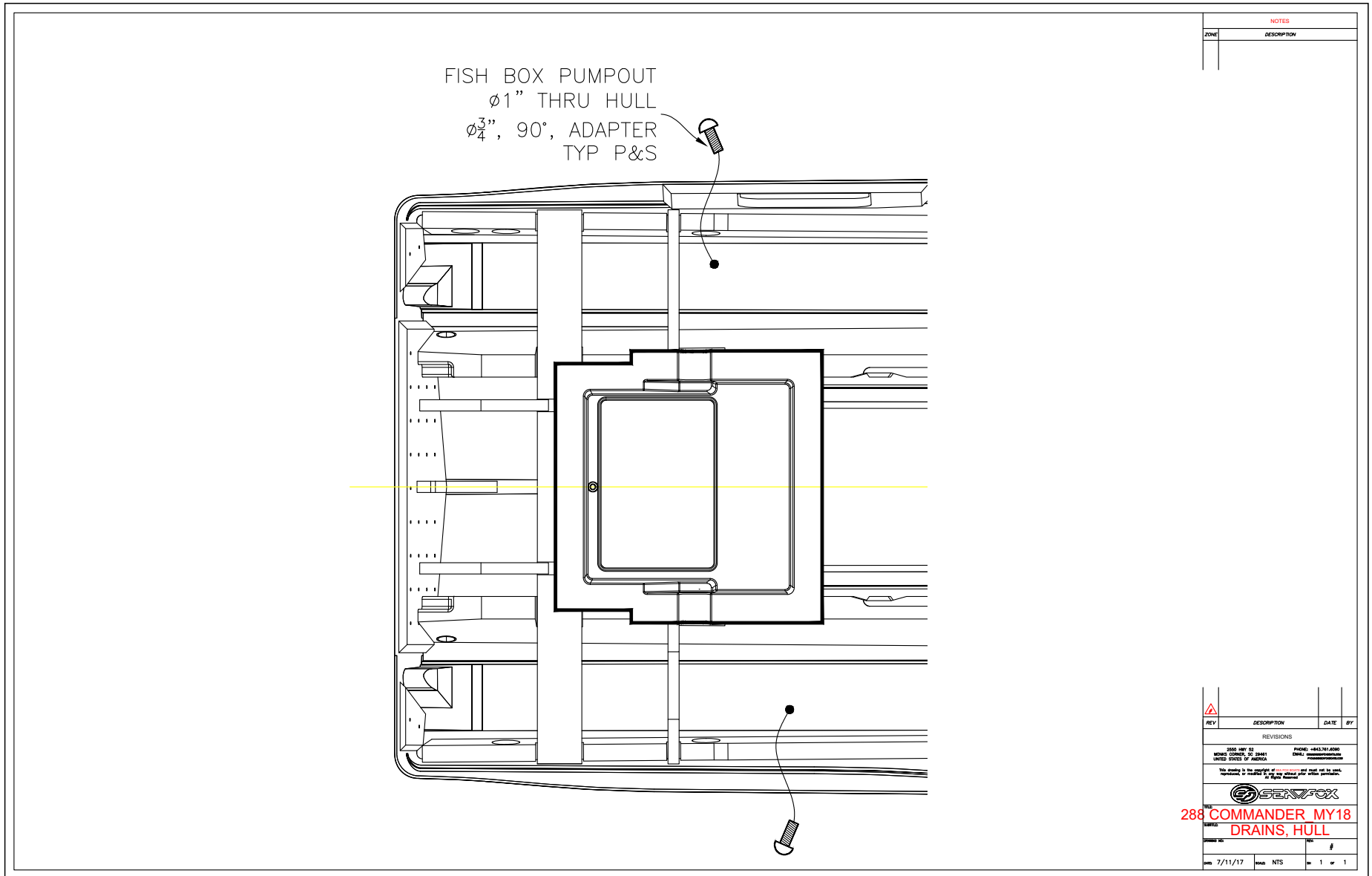
PHONE: 434.761.6000
 FAX: 434.761.6001
 WWW.SEAFOX.COM

SEAFOX

**288 COMMANDER MY18
 DRAINS, HULL**

DATE: 7/11/17 DRAWN: NTS SHEET: 1 OF 1

COMMANDER DRAINS, HULL (CONTINUED)



NOTES	
ZONE	DESCRIPTION

REV	DESCRIPTION	DATE	BY

REVISIONS

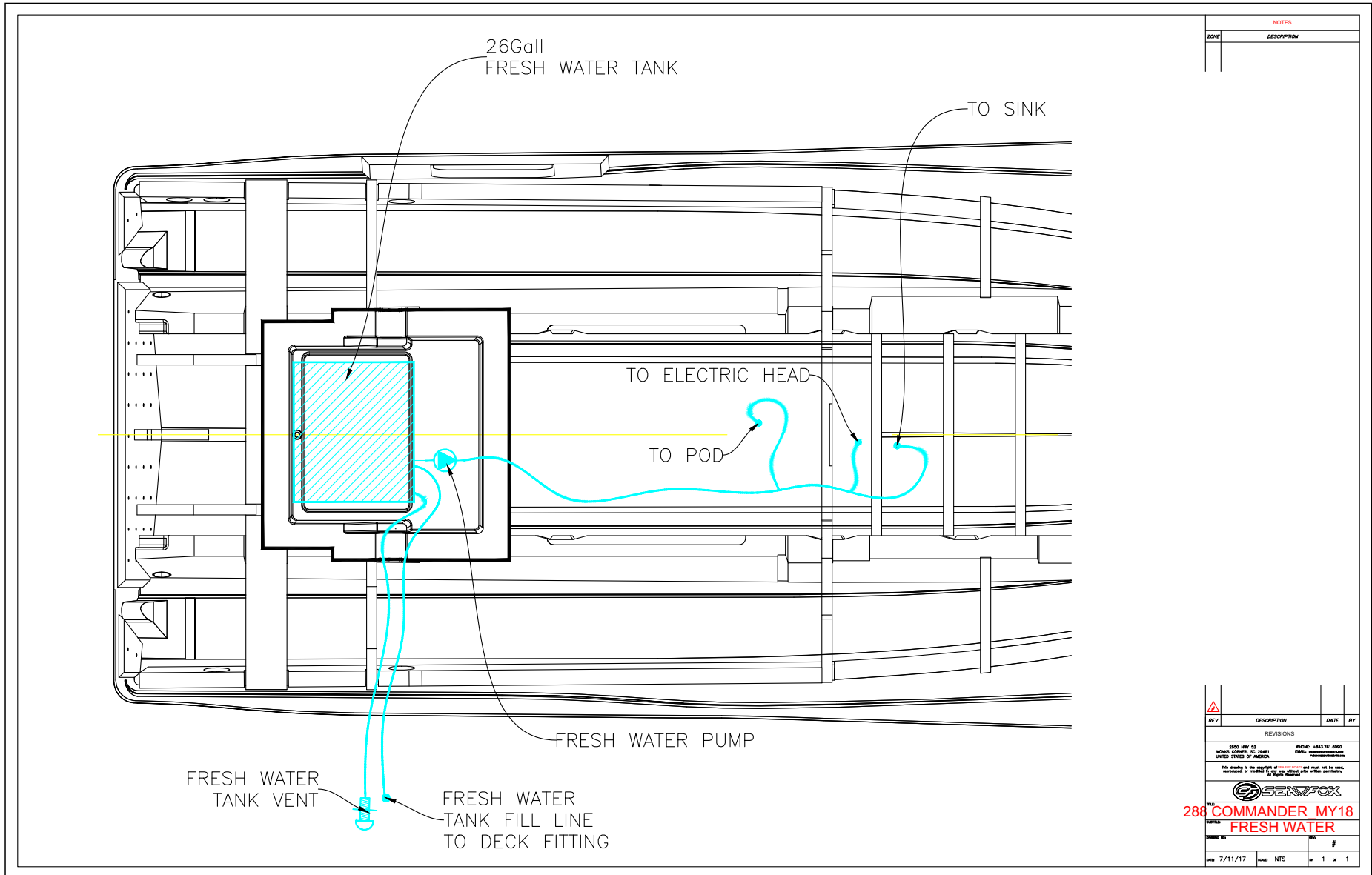
2018 1887 02 PHONE: 848.765.4000
 8000'S CORNER, ST. JOHNS EMAIL: SALES@SEAFOX.COM
 UNITED STATES OF AMERICA WWW.SEAFOXBOATS.COM

This drawing is the property of SeaFoxBoats and shall not be used, reproduced, or modified in any way without prior written permission.

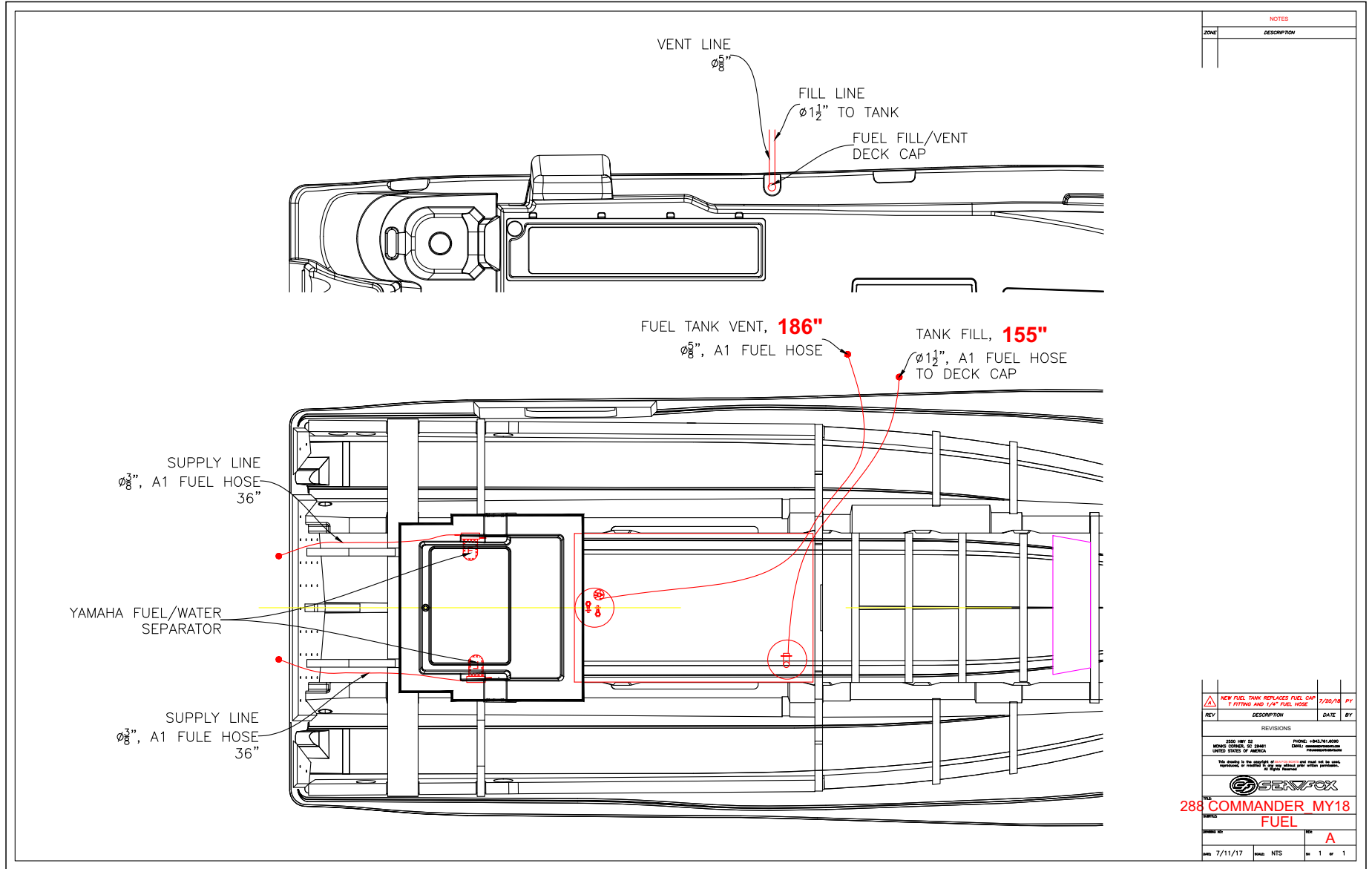
288 COMMANDER_MY18
DRAINS, HULL

DATE	7/11/17	SCALE	NTS	SHEET	#
				1	1

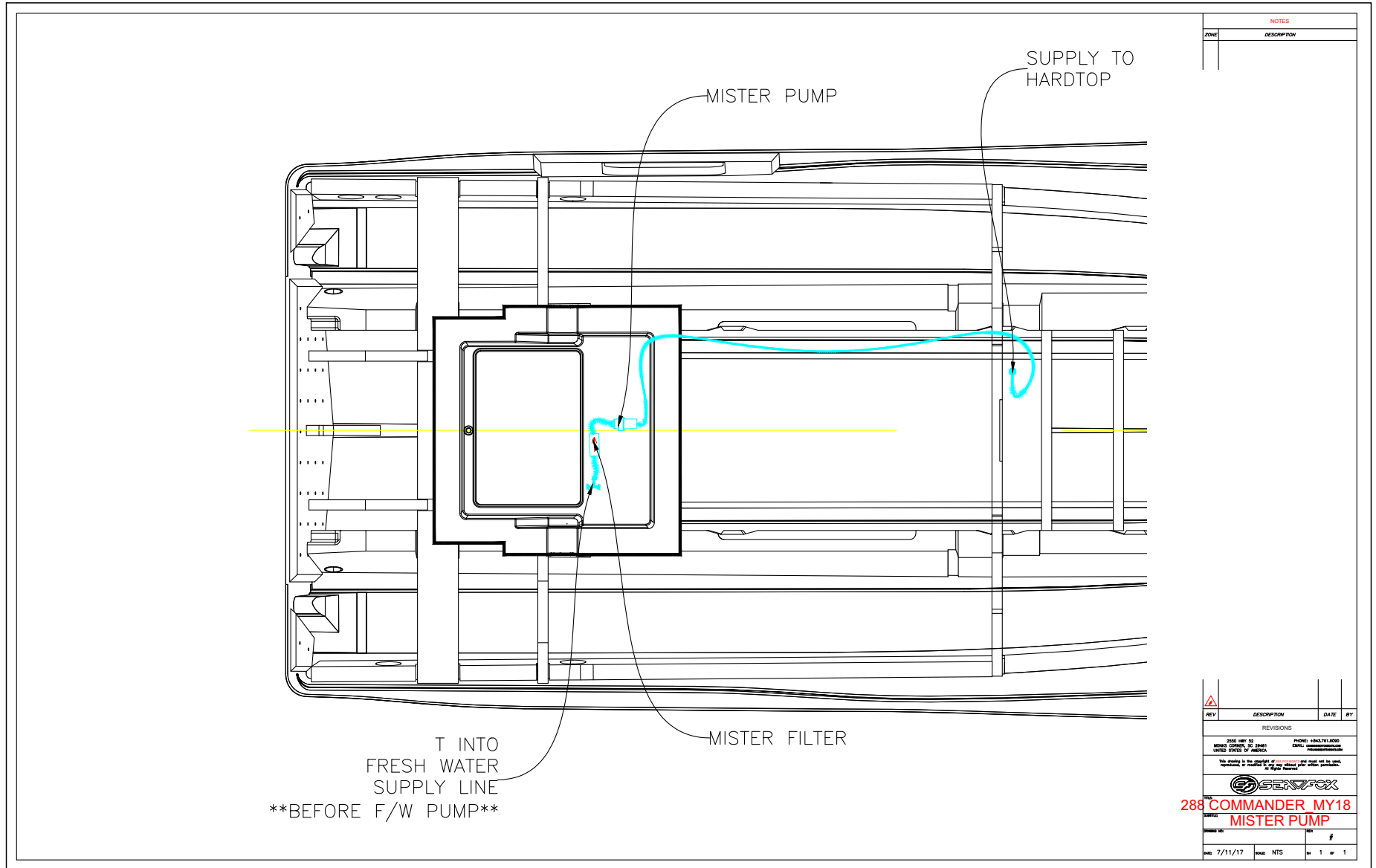
COMMANDER FRESH WATER SYSTEM



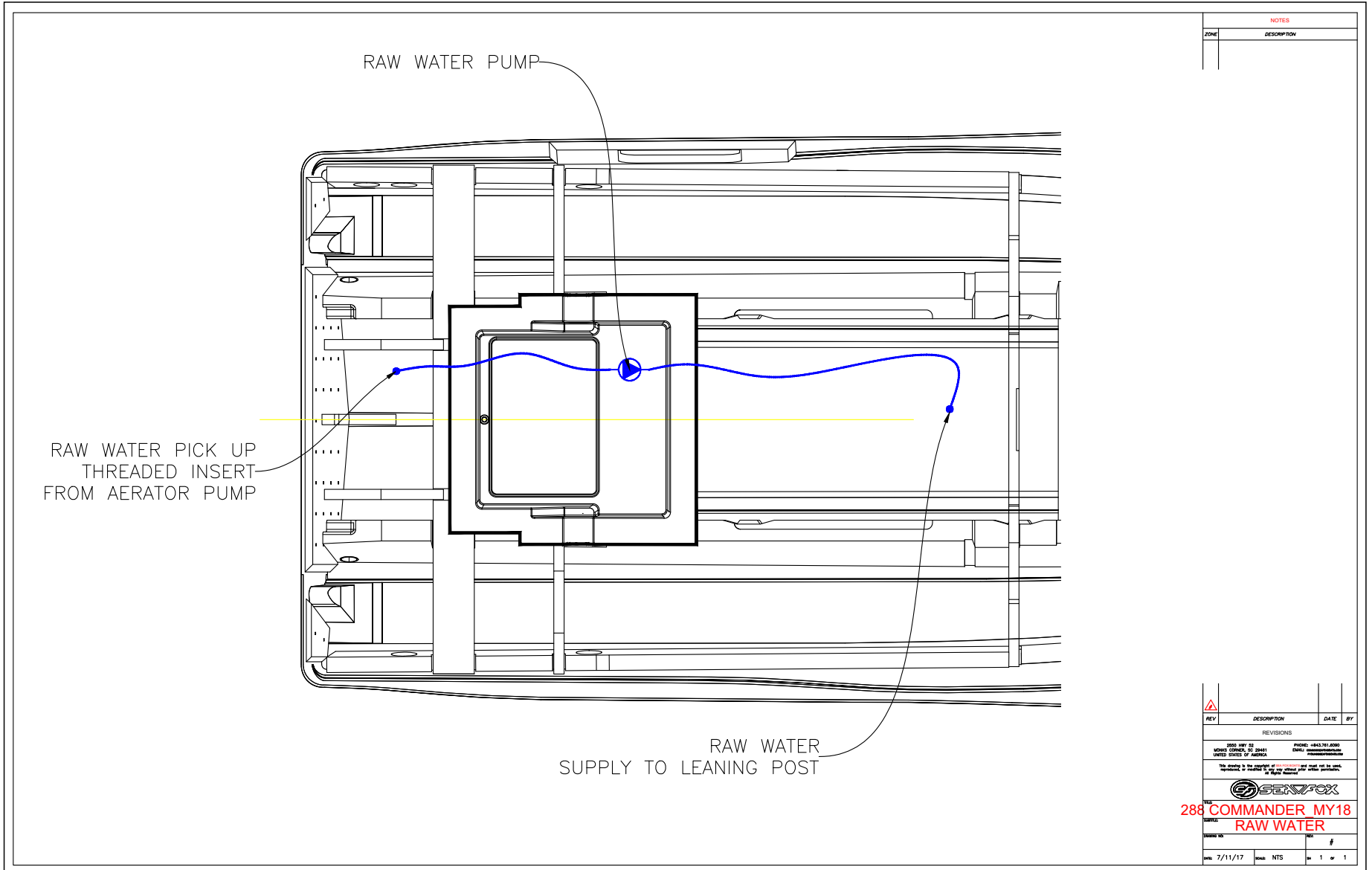
COMMANDER FUEL SYSTEM



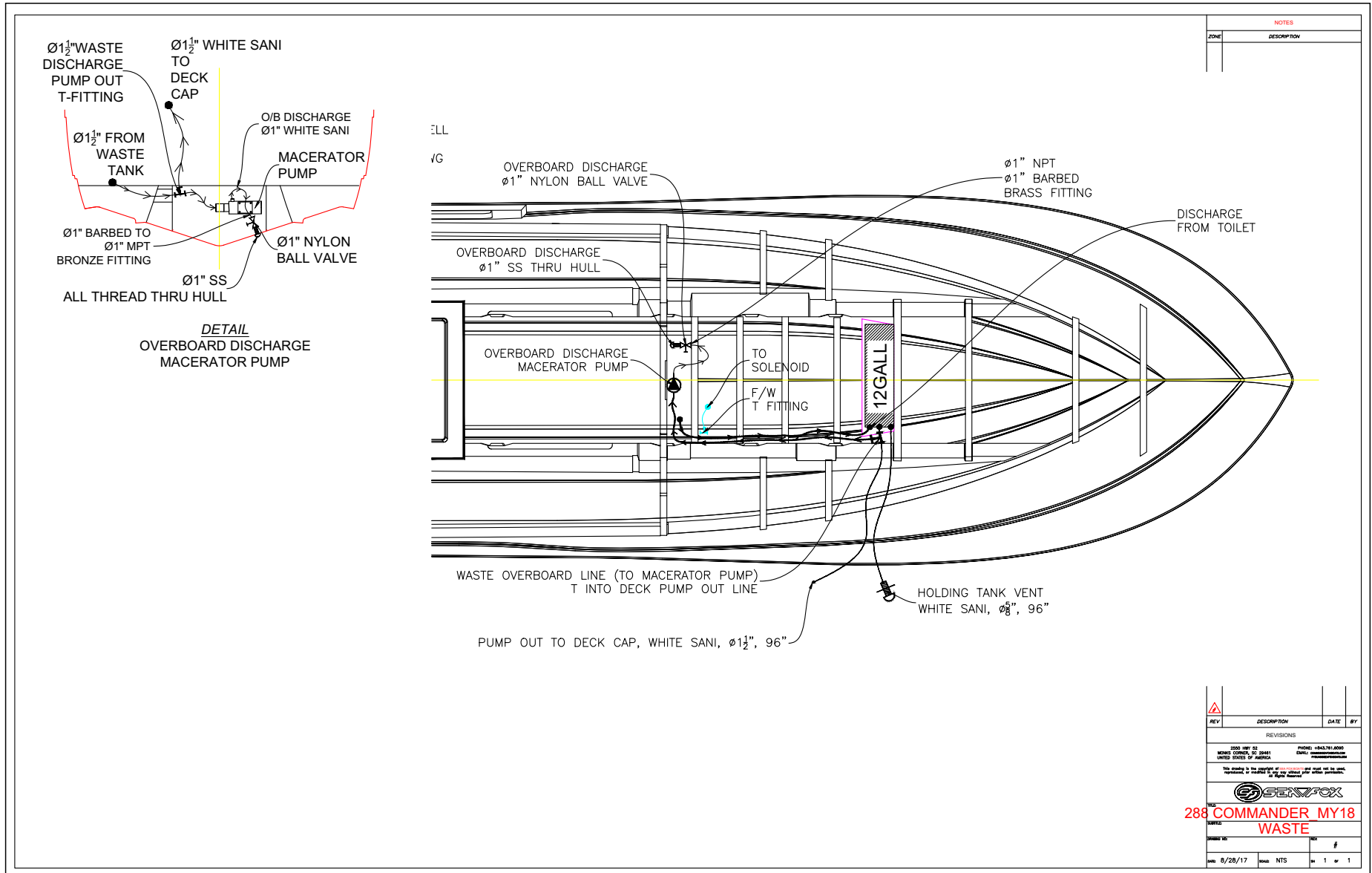
COMMANDER MISTER PUMP SYSTEM



COMMANDER RAW WATER SYSTEM



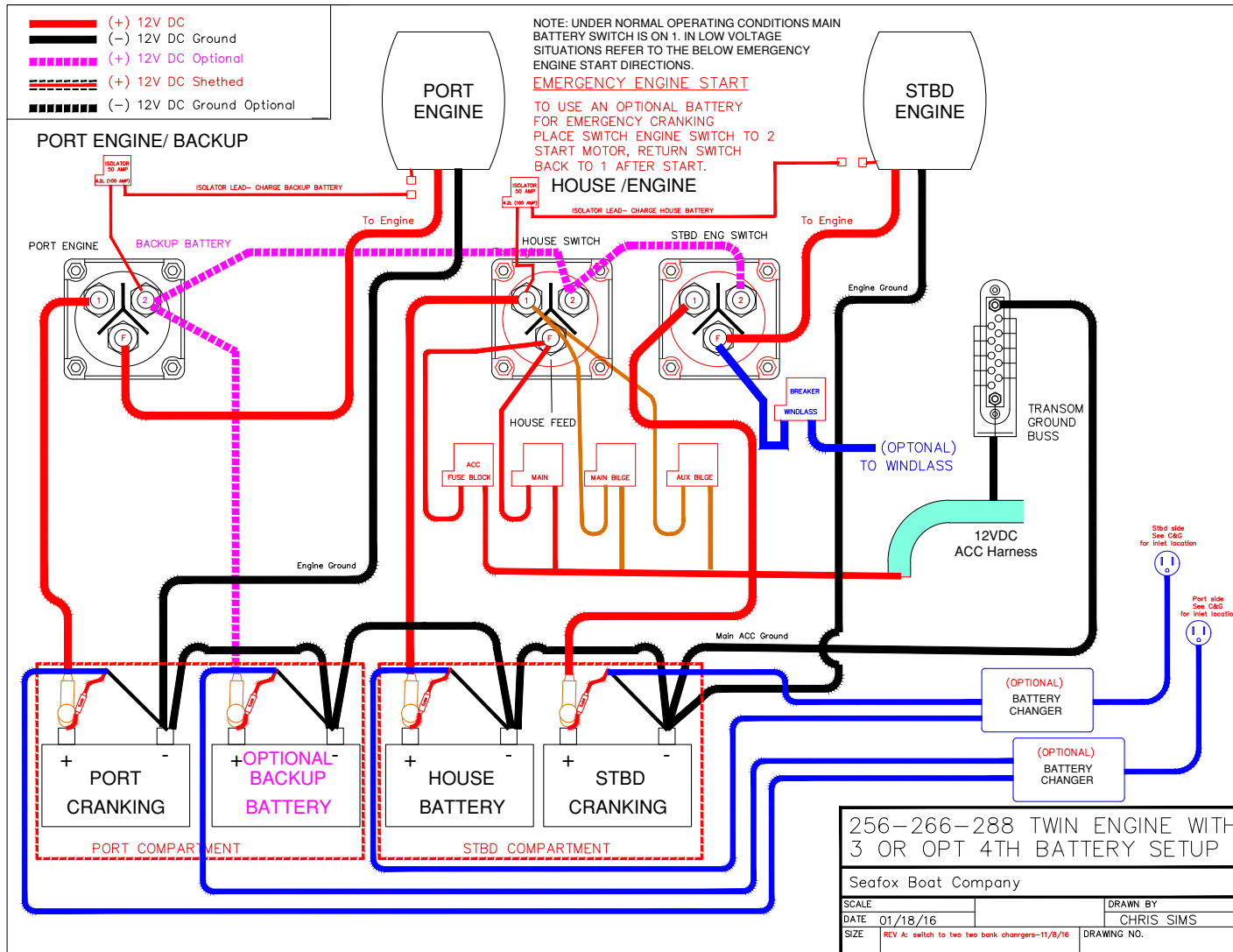
COMMANDER WASTE SYSTEM



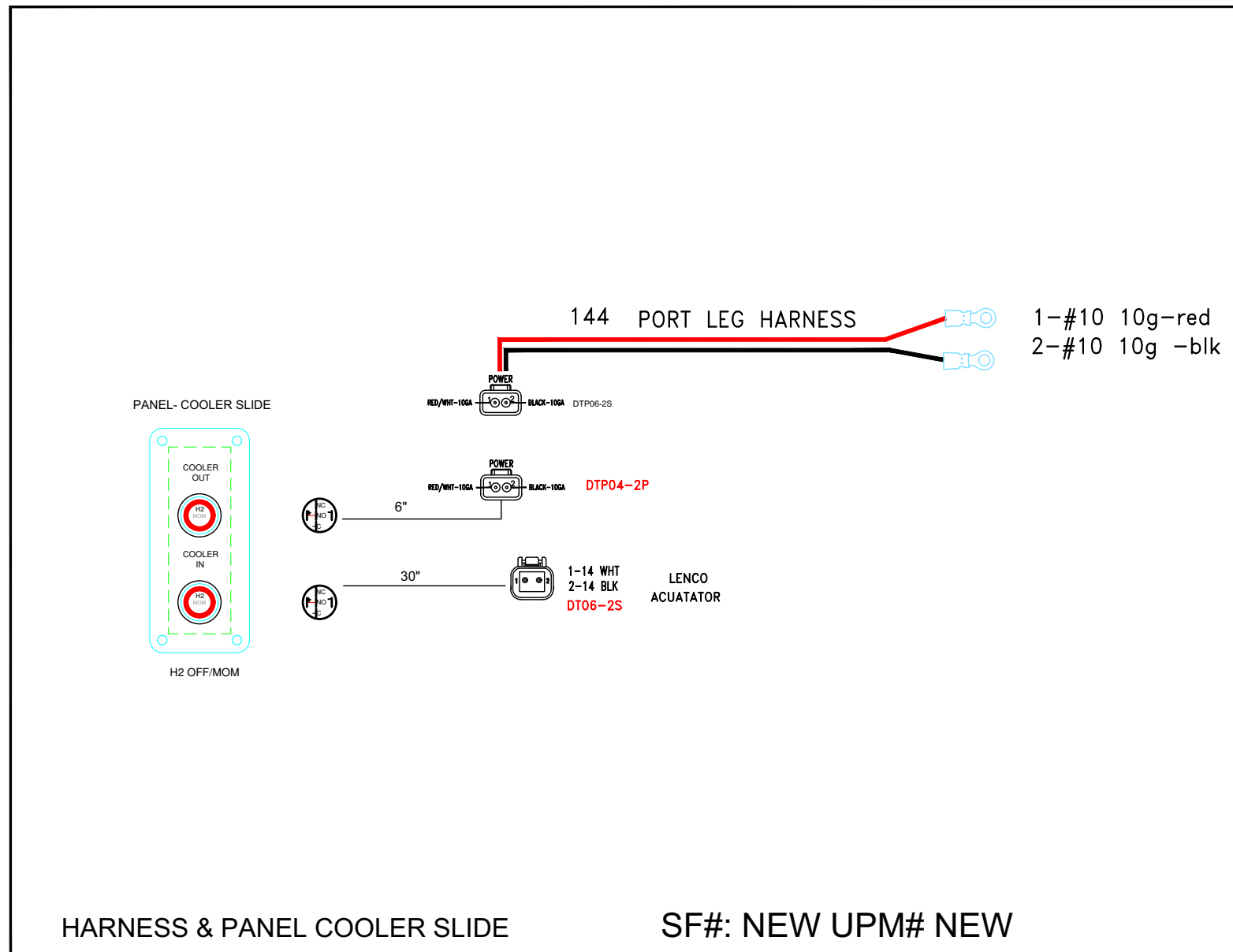
REV	DESCRIPTION	DATE	#
REVISIONS			
2880 MY18 MODEL NUMBER: CC-28801 LATEST DATES TO PURCHASE			
This drawing is the property of SeaFox Boats and shall not be used, copied, reproduced, or altered in any way without prior written permission. All Rights Reserved.			
288 COMMANDER_MY18 WASTE			
DATE	BY	SCALE	SHEET #
8/28/17	NTS		1 of 1

ELECTRICAL SCHEMATICS

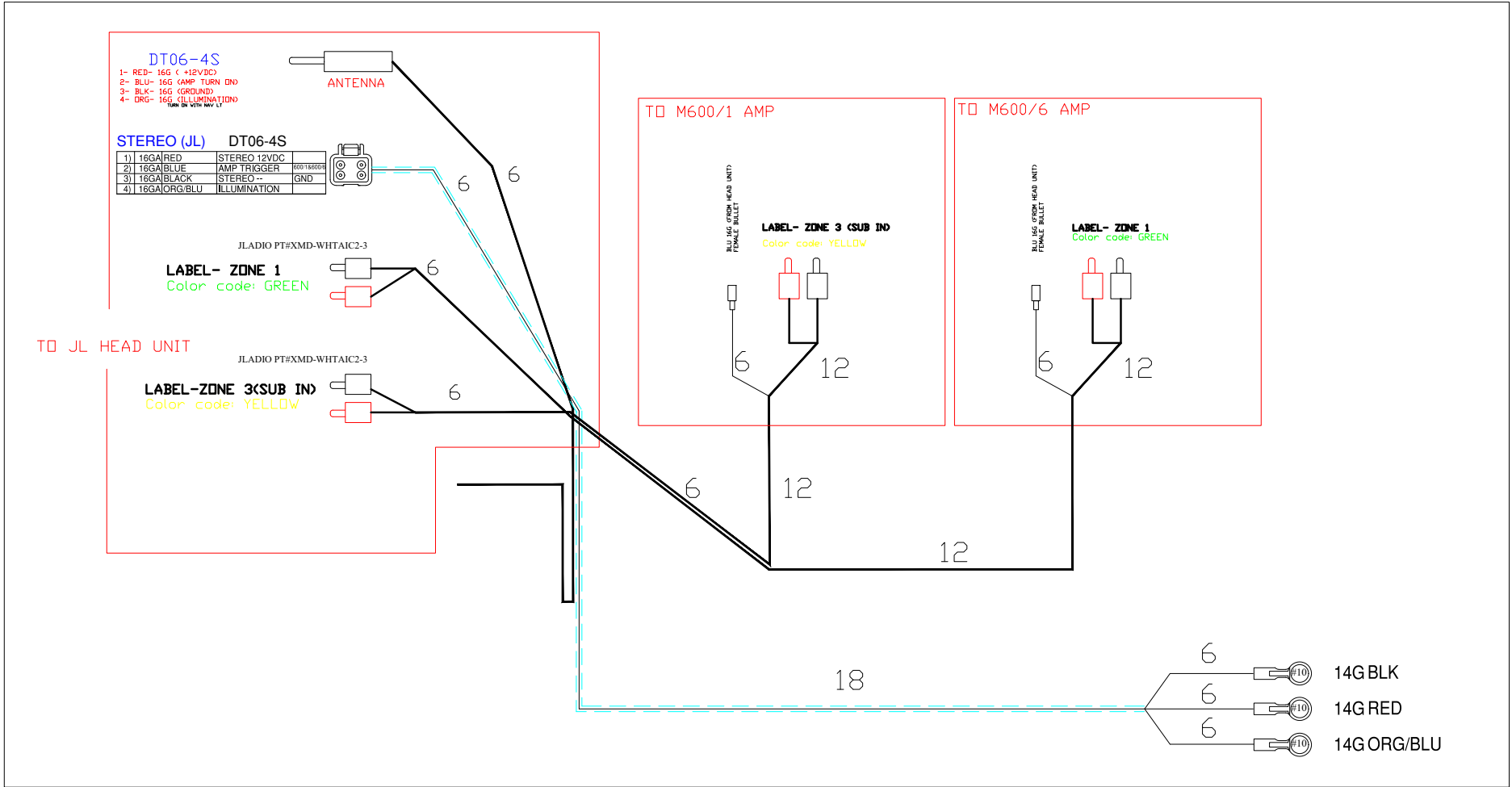
TWIN ENGINE WITH 4-BATTERY SETUP AND CHARGER



HARNESS & PANEL COOLER SLIDE

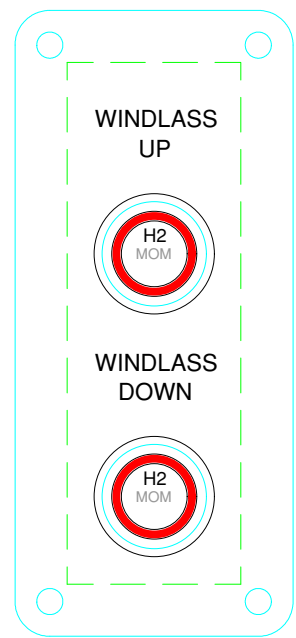


HARNES – JL STEREO

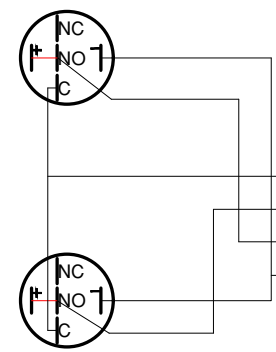


HARNES WINDLASS PANEL

REV. A	DATE	



H2 OFF/MOM

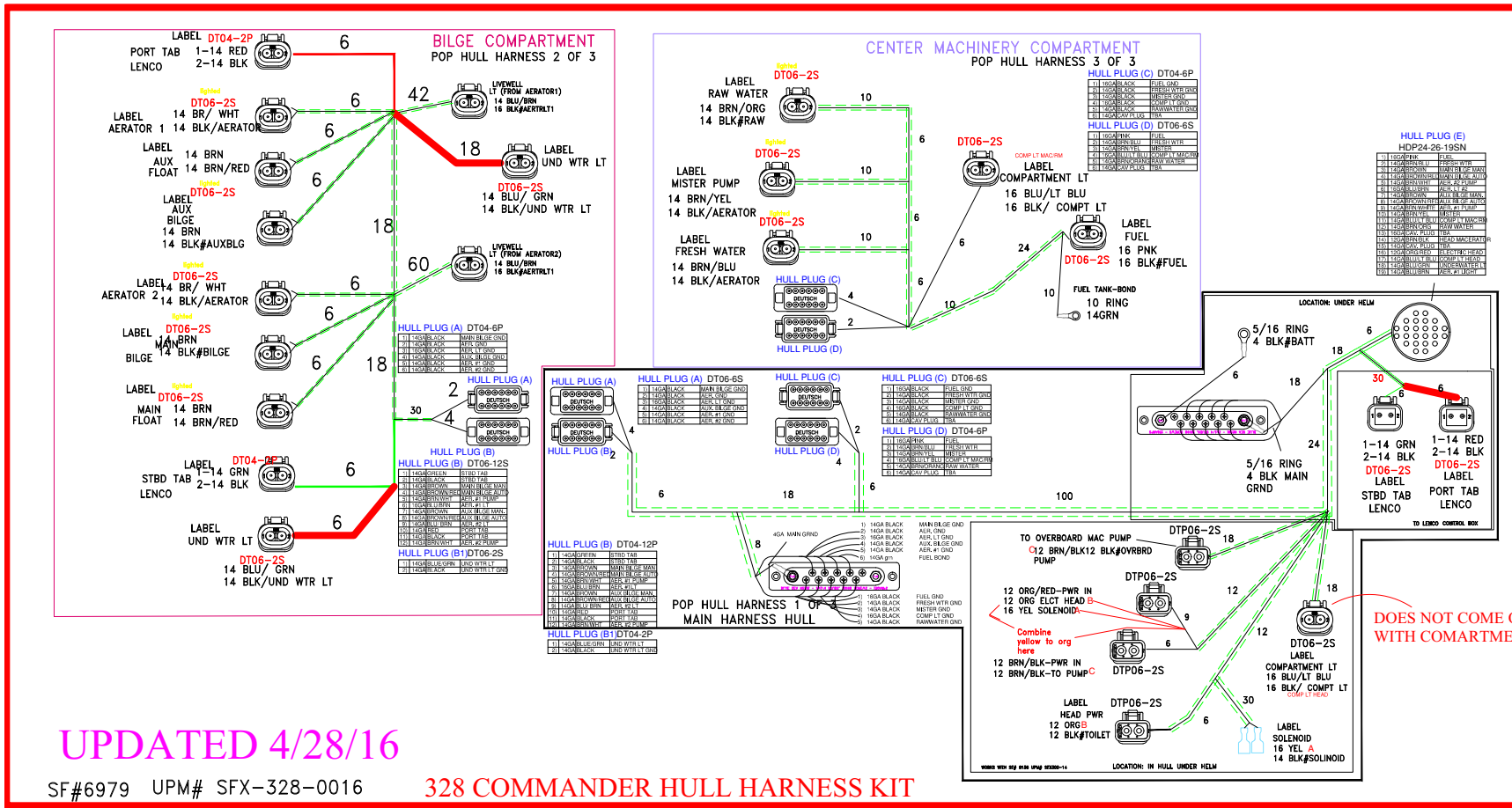


DECK PLUG (G) DT06-4S

1)	14GA	RED	SWITCH PWR
2)	14GA	GREEN	DOWN WINDLASS
3)	14GA	BLUE	UP WINDLASS
4)	14GA	BLACK	SWITCH GND

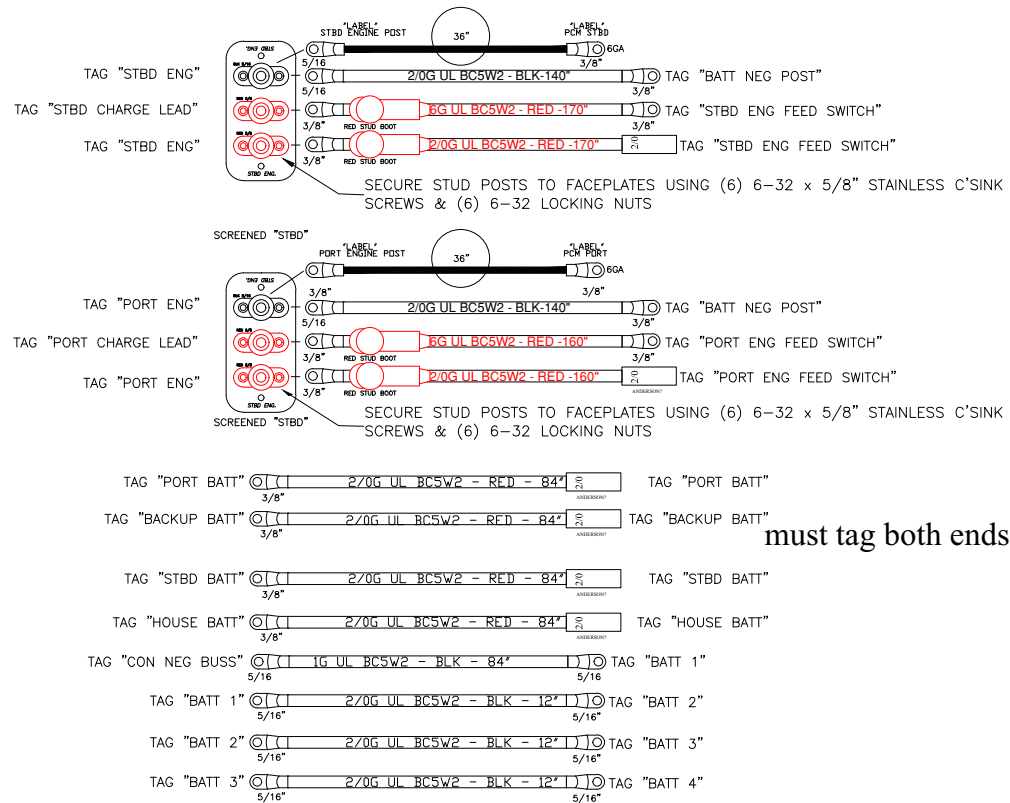
<p>6891 N.W. 73rd COURT Miami, FL 33166 Ph: 305-888-7709 Fax 305-888-7288</p>	SEAFOX 328	
	TITLE FWD WINDLASS PANEL	
<p>XR MARTIN</p>	SCALE	3/30/2016
<p>SIZE</p>	<p>CAGE CODE</p>	<p>DWG NO</p>
<p>REV</p>	<p>1</p>	<p>1</p>

SFX-328-0016 HARNES, HULL KIT 328



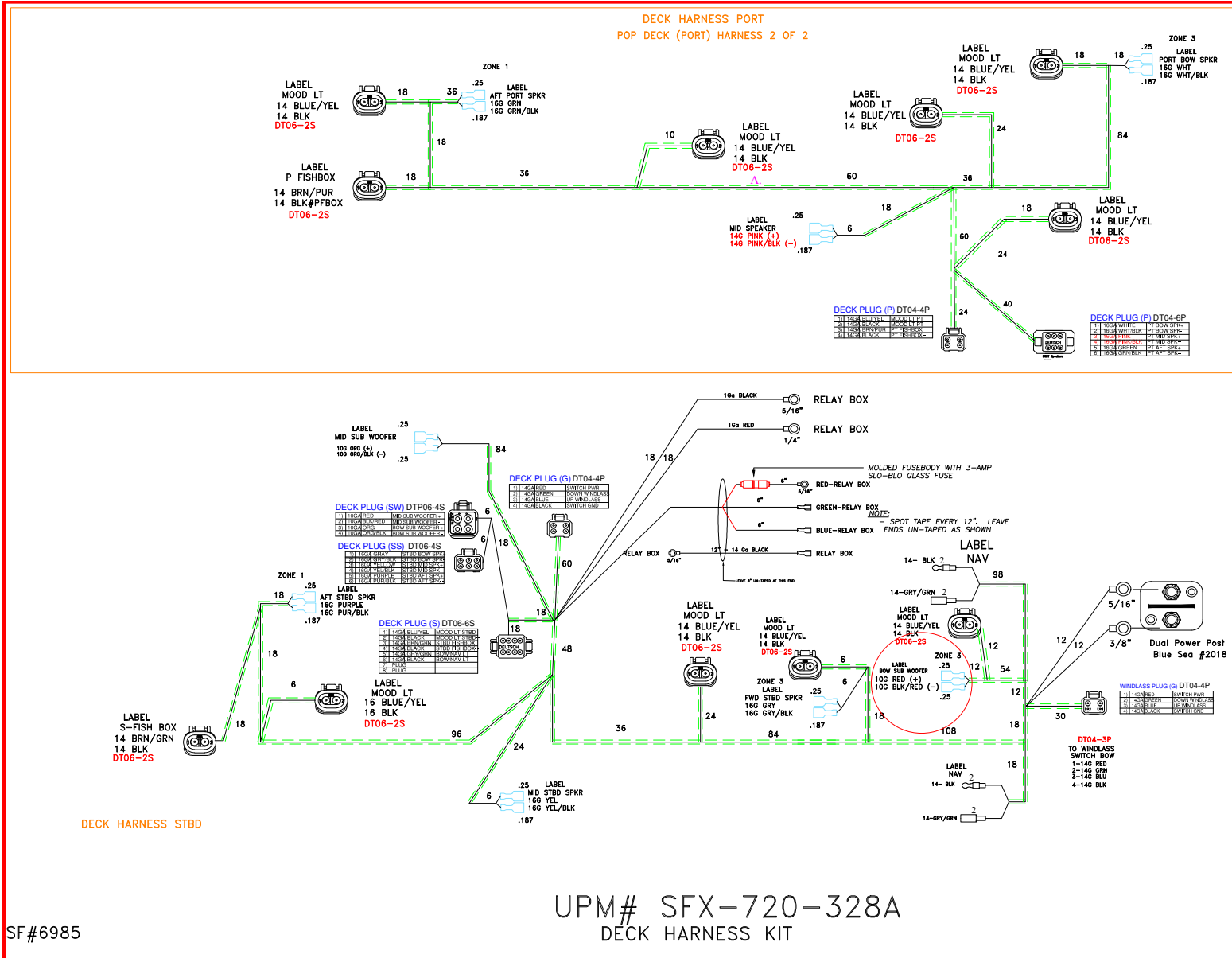
HARNES BATTERY CABLE SET EPS (P/N 6980)

BATTERY CABLE SET HULL 328 SF# 6980 UPM# SFX-721-328B



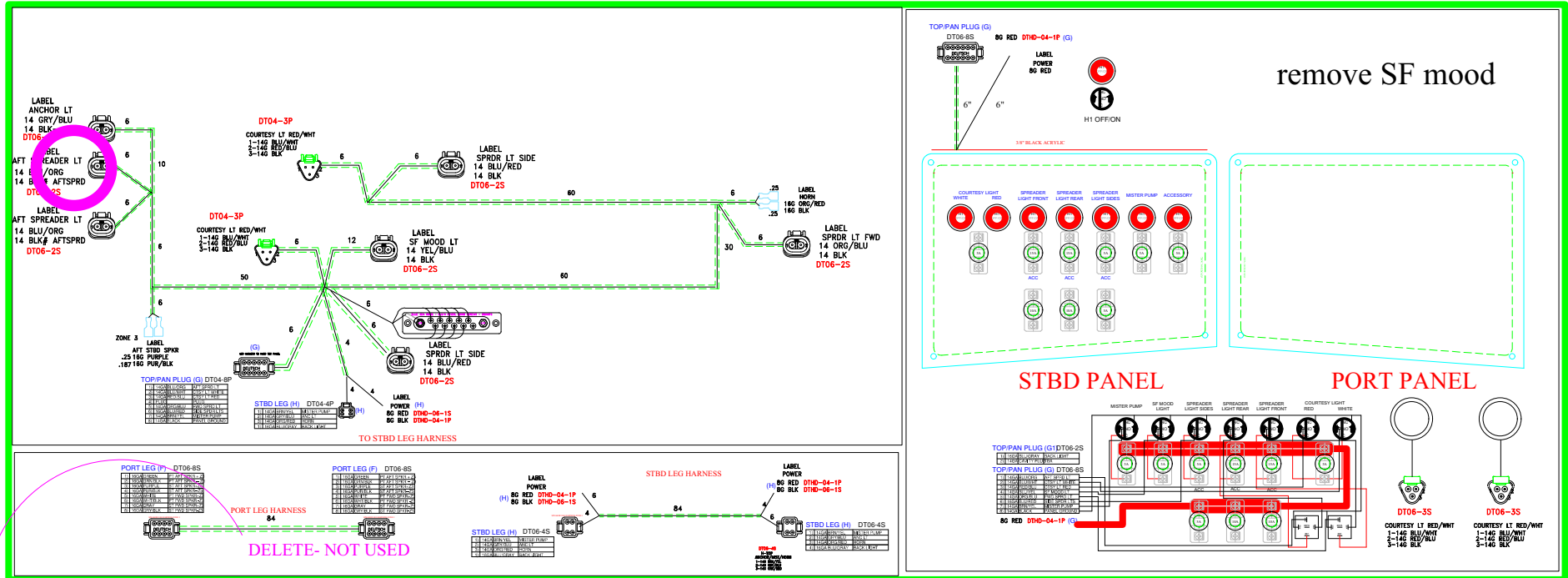
- NOTES:**
- (1) ALL RING TERMINALS ARE TO BE MECHANICAL CRIMPED AND ADHESIVE-LINED HEAT SHRUNK
 - (2) TAG ALL CABLES AS SHOWN WITHIN 1-1/2" OF TERMINALS
 - (3) CABLE TIE "TAG" (SHOWN ON TOP) TO BATTERY KIT.
 - (4) BOX COMPLETED BATTERY KIT ASSEMBLY.

HARNES DECK (P/N 6985)



U PANEL SWITCH/HARNESS ULTIMA (P/N 6997)

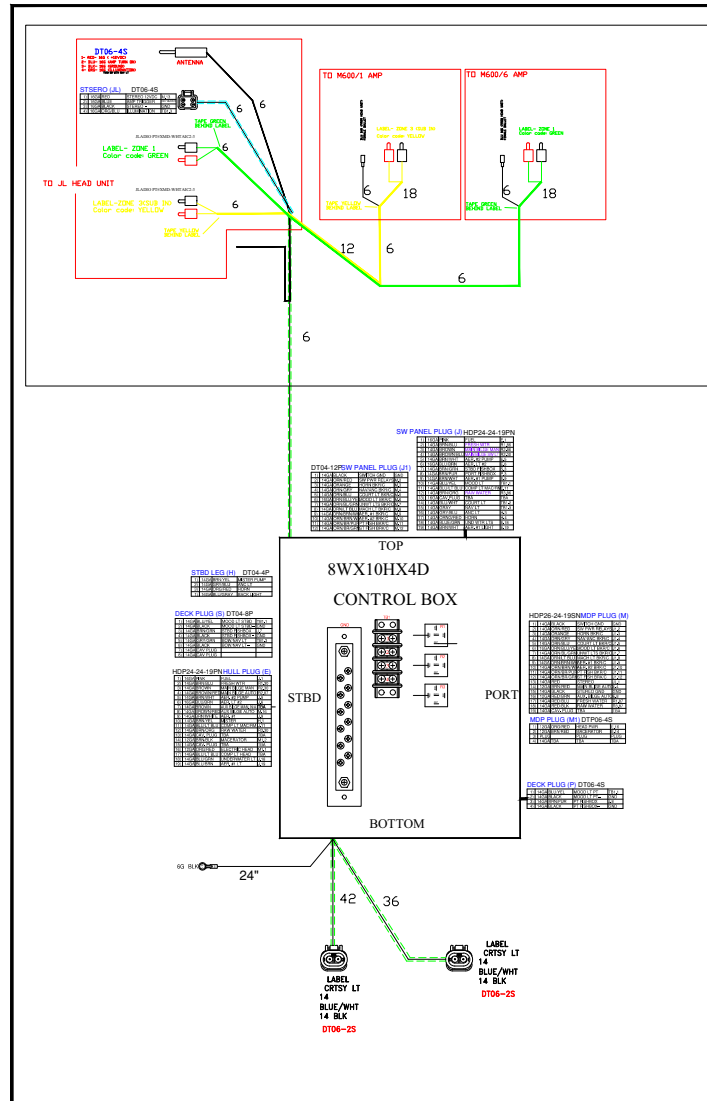
SFX-305-328
HARNESS/ PANEL KIT 328



SFX-305-328A: 1) CHANGE FROM 3 WAY AND TWO WAY PLUG TO 4WAY PLUG FOR MISTER, NAV, BACK LIGHT AND HORN, CHANGE NOMINCLATURE FROM SF TO ACCESSORY
2) CHANGE NOMINCLATURE FROM SF TO ACCESSORY

SFX-305-328B: 1) REMOVE SPEAKER WIRING- NOT USED FORE JL AUDIO

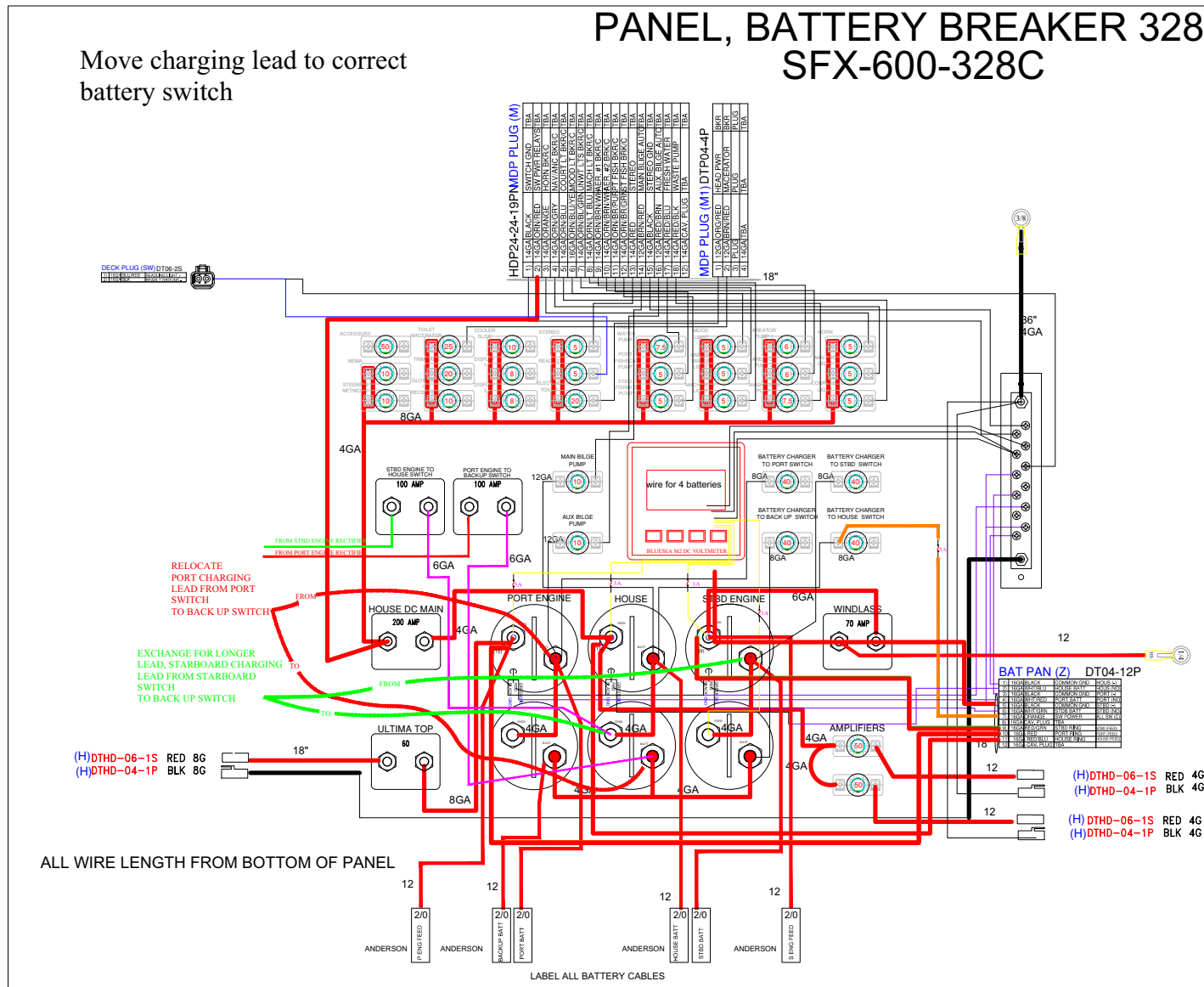
SFX-900-328X
BOX, CONTROL 328



PANEL BREAKER CON W/ BATTERY SWITCH (P/N 7138)

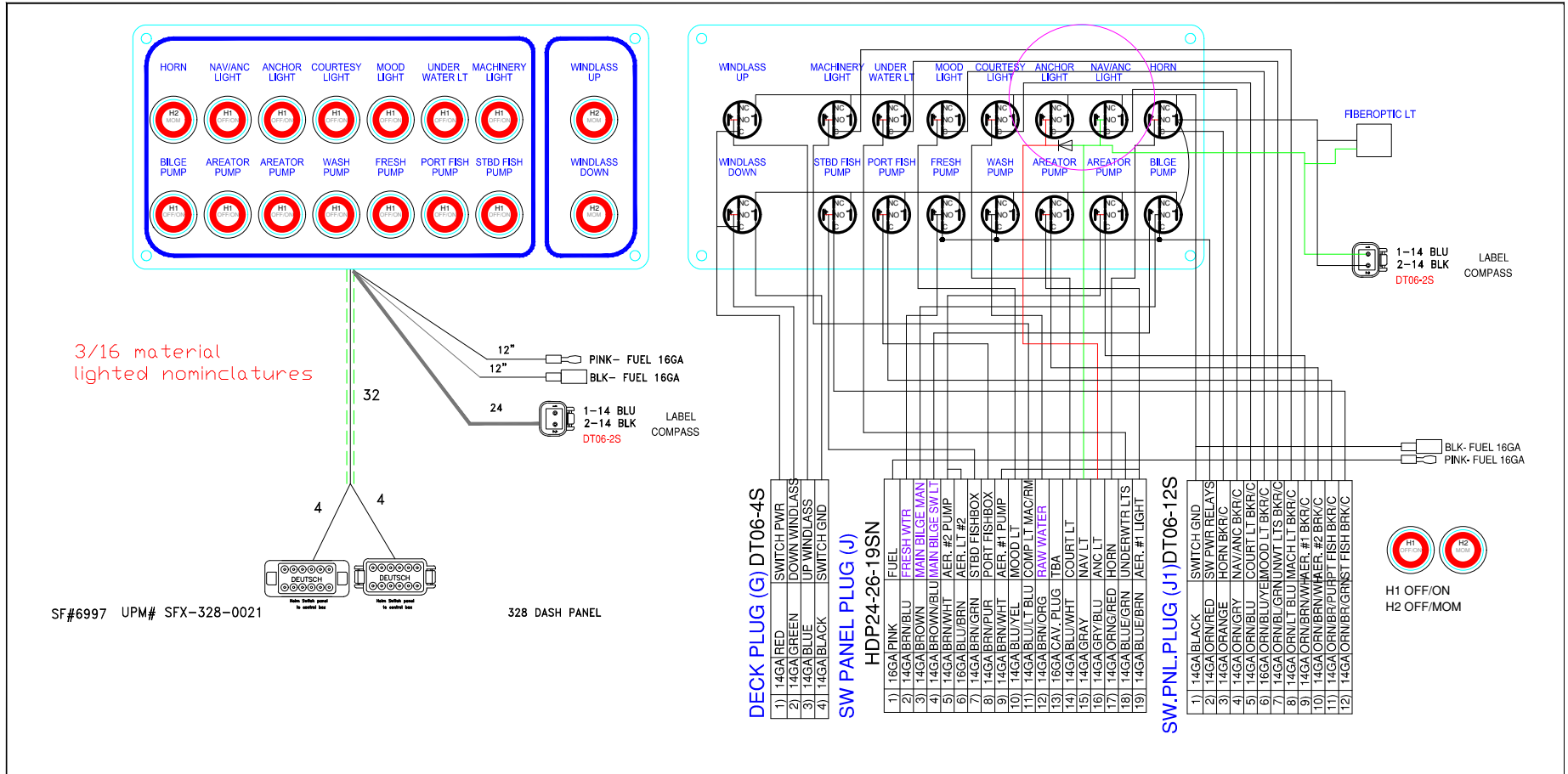
PANEL, BATTERY BREAKER 328
SFX-600-328C

Move charging lead to correct battery switch



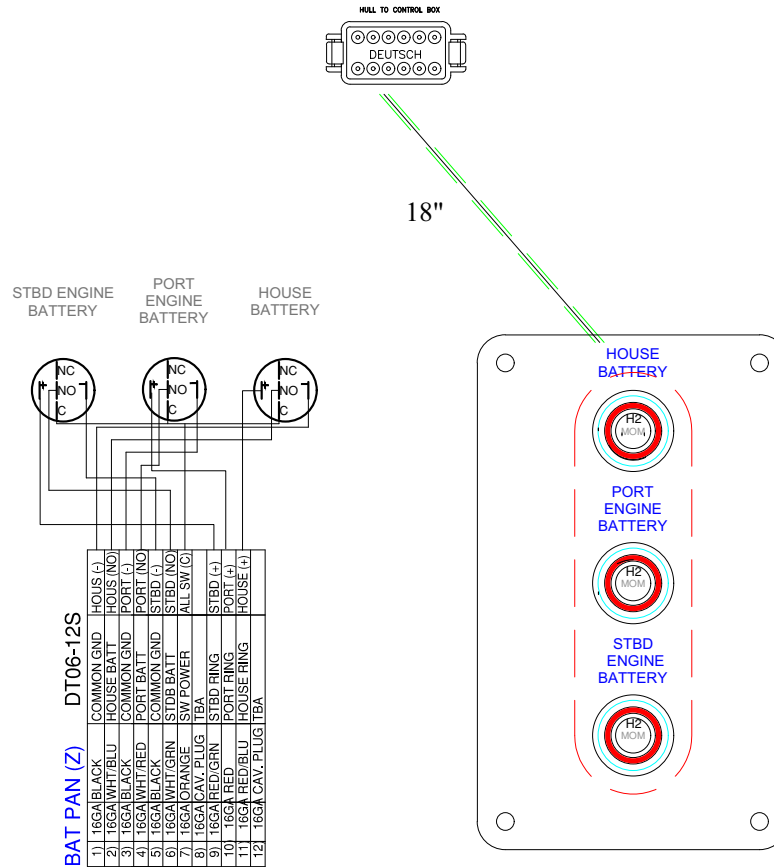
PANEL, HELM SWITCH 328

SFX-400-328



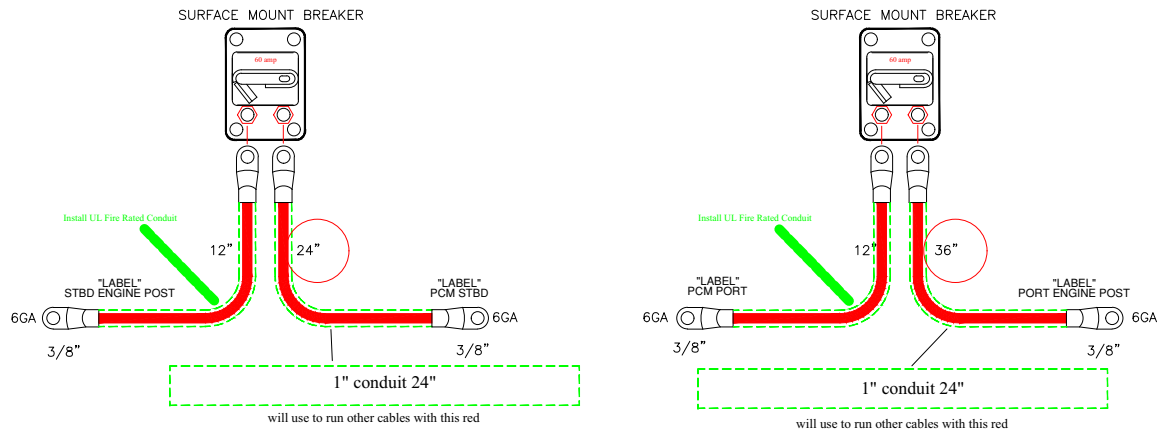
PANEL SWITCH, REMOTE BATTERY HELM (P/N 7332) – OPTIONAL

PANEL, Remote battery 288 SFX-361-07



sf# 7332

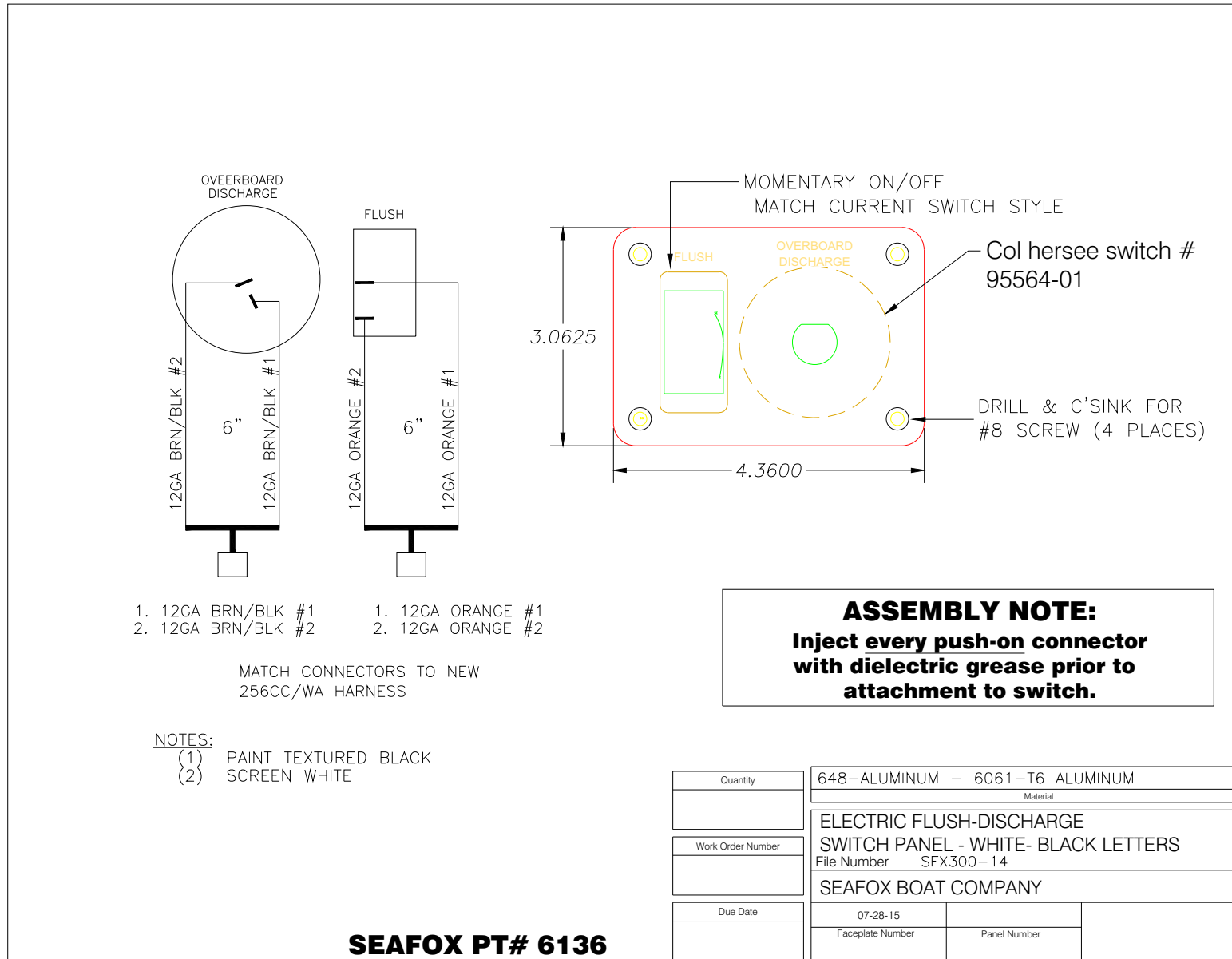
BREAKER KIT- SEASTAR EPS-60AMP- SFX-730-328A



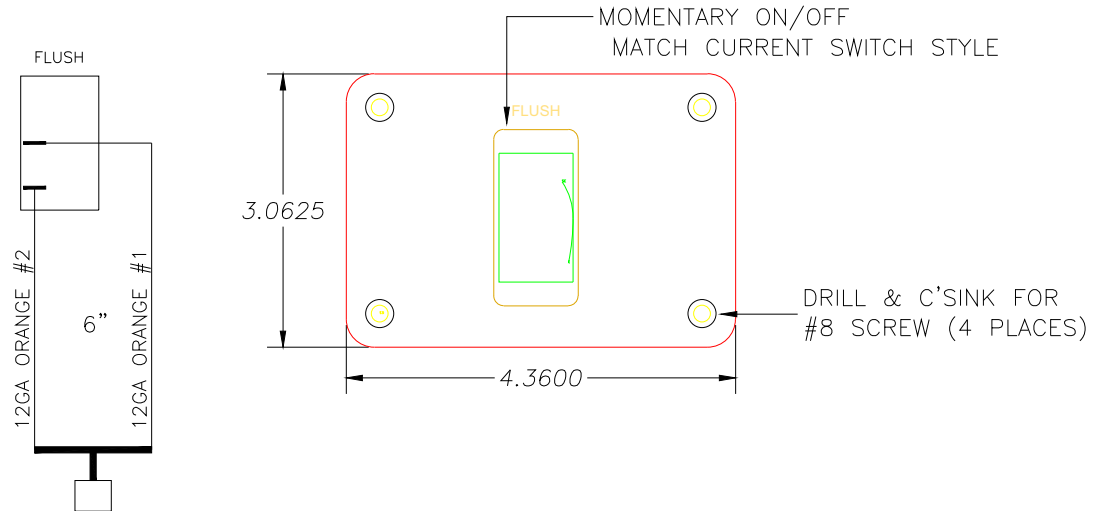
NOTES:

- (1) ALL RING TERMINALS ARE TO BE MECHANICAL CRIMPED AND ADHESIVE-LINED HEAT SHRUNK
- (2) TAG ALL CABLES AS SHOWN WITHIN 1-1/2" OF TERMINALS
- (3) CABLE TIE "TAG" (SHOWN ON TOP) TO BATTERY KIT.
- (4) BOX COMPLETED BATTERY KIT ASSEMBLY.

ELECTRIC FLUSH DISCHARGE SWITCH PANEL (P/N 6136) – OPTIONAL



ELECTRIC FLUSH SWITCH PANEL (P/N 6870) – OPTIONAL



- 1. 12GA ORANGE #1
- 2. 12GA ORANGE #2

MATCH CONNECTORS TO NEW 256CC/WA HARNESS

- NOTES:
- (1) PAINT TEXTURED BLACK
 - (2) SCREEN WHITE

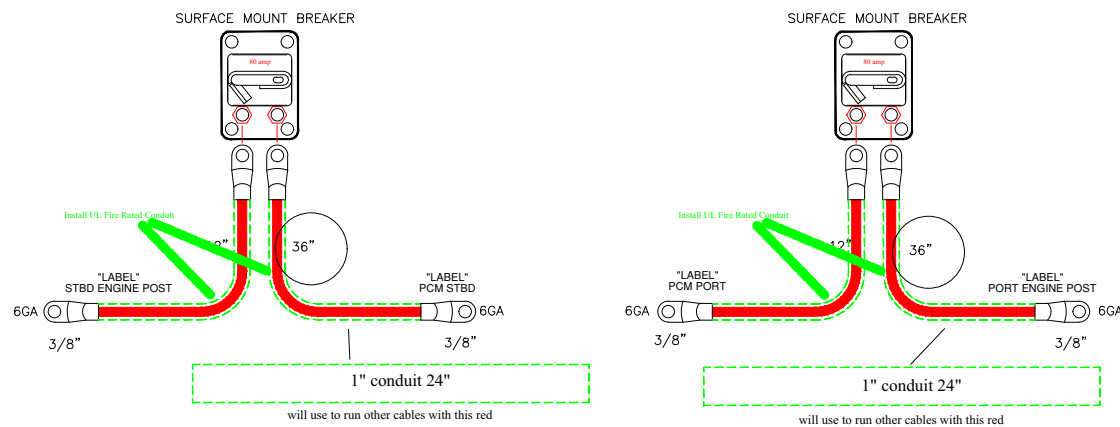
ASSEMBLY NOTE:
Inject every push-on connector with dielectric grease prior to attachment to switch.

SF# 6870 UPM# SFX-028-11

Quantity	648-ALUMINUM - 6061-T6 ALUMINUM	
	Material	
Work Order Number	ELECTRIC FLUSH SWITCH PANEL - BLACK- WHITE LETTERS	
	File Number	
	SEAFOX BOAT COMPANY	
Due Date	07-28-15	
	Faceplate Number	Panel Number

BREAKER KIT 80-AMP – HELM MASTER (P/N 7379) – OPTIONAL

BREAKER KIT- HELM-MASTER-80AMP- SFX-735-328A



NOTES:

- (1) ALL RING TERMINALS ARE TO BE MECHANICAL CRIMPED AND ADHESIVE-LINED HEAT SHRUNK
- (2) TAG ALL CABLES AS SHOWN WITHIN 1-1/2" OF TERMINALS
- (3) CABLE TIE "TAG" (SHOWN ON TOP) TO BATTERY KIT.
- (4) BOX COMPLETED BATTERY KIT ASSEMBLY.



This Page Intentionally Left Blank

This Page Intentionally Left Blank



This Page Intentionally Left Blank

This Page Intentionally Left Blank



This Page Intentionally Left Blank



Sea Fox Boat Company, Inc.
2550 Highway 52
Moncks Corner, SC 29461-5024

Telephone: 843-761-6090
www.seafoxboats.com

Ken Cook Co.
Printed in U.S.A.
Rev 0819