



Owner's Manual Supplement

www.SeaFoxBoats.com

SEA FOX BOAT'S DISCLAIMER

The following Owner's Manual is provided for information and educational purposes only and is not intended to offer or provide legal advice or create a contractual relationship between Sea Fox Boat Company and the owner of any Sea Fox brand vessel. Please beware that as a vessel owner you have non-delegable responsibilities regarding the safety, maintenance, fitness, and operation of your vessel and the extent of such responsibilities is ultimately determined by Federal law and regulations, the general maritime law of the United States, the laws and regulations of the states and territories of the United States, or the laws and regulations of the country where you operate your vessel. To fully understand your responsibilities as a vessel owner, and before operating or letting any third-party operate your vessel, we recommend that you consult the services of a qualified lawyer in admiralty and maritime law.

TABLE OF CONTENTS

Introduction	3	Harness Nav LT LG w/Deutsch (P/N 6121)	17
Specifications	3	Harness ACC w/ Len/ORB Deutsch (P/N 6872)	18
Designated Occupant Seating	4	Harness Kicker Only 6-Speaker	19
Plumbing Schematics	5	Harness JL 6-Speaker	20
Commander Bilge System	5	Panel	21
Commander Drains	6	JL Audio Breaker Kit Long	22
Commander Electric Head System	7	Trimtabs Electrical Switch Standard (P/N 2895) – Optional	23
Commander Fresh Water System	8	Harness Mood Light w/Deutsch (P/N 6128) – Optional	24
Commander Fuel System	9	Harness Windlass Hull Aft Battery (P/N 6134) – Optional	25
Commander Livewell System	10	Harness Windlass Deck Option (P/N 6135) – Optional	26
Commander Mister System	11	Head Panel Switch ORB (P/N 6136) – Optional	27
Commander Pod Livewell System	12	Harness Stereo Kicker Con 2016 (P/N 6851) – Optional	28
Commander Raw Water System	13	Stereo Kicker Deck 2016 w/LED (P/N 6852) – Optional	29
Electrical Schematics	14	Head Panel Switch ORB (P/N 6870) – Optional	30
Twin Engine with 3-Battery Setup and Charger	14	U Panel Switch/Harness Ultima (P/N 7277) – Optional	31
Twin Engine with 3 Optional 4th-Battery Setup	15		
Single Engine with 2 Optional 3rd-Battery Setup	16		



This Page Intentionally Left Blank

INTRODUCTION

Congratulations and Welcome Aboard! With so many boat brands to choose from, we want to congratulate you on your decision to choose Sea Fox Boats. For more than 24 years, Sea Fox offers the finest hand-crafted saltwater boats carefully balanced with the build-quality, features, styling and performance for the fairest price. Our passion for boating is evident in every model we make and we appreciate that you've noticed the Sea Fox difference.

We share your love for the moments spent on the water with friends and family, which is why every Sea Fox boat offers a unique blend of fishing/family options, technologies and innovative features. Your choice of a Sea Fox affirms that you have performed your research and compared the value of your model with the competition.

Whether you are new to the boating lifestyle or an old salt, we ask that **you and all other operators** read the owner's manual, this supplement, and all other literature provided with the boat **before** operating the boat or any equipment. We also recommend that all operators enroll in a boating safety course available online - see References and Contact Information in this section for education resources online.

This supplement contains model-specific information not included with the owner's manual. This manual is not intended to be a replacement for specific product literature provided by engine, accessory or other major equipment manufacturers, but rather to supplement that information.

Because of our philosophy of continuous product improvement, this manual serves as a general guide only, so the specifications and illustrations used may not match the equipment on your boat and are intended only as general reference views.

We welcome you to the Sea Fox family and wish you many years of boating enjoyment!

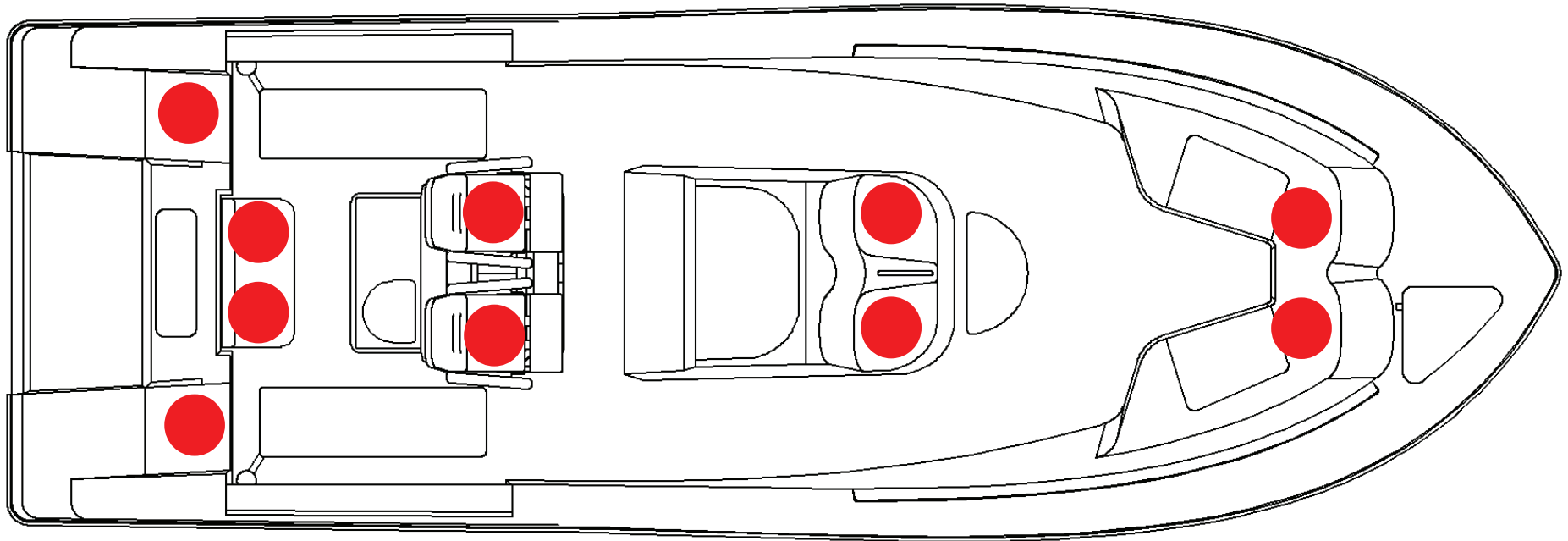
SPECIFICATIONS

Max. Weight Capacity	Yacht Certification
Persons	Yacht Certification
Persons Weight	Yacht Certification
Max. HP	400 hp (298 kw)
L.O.A.	26' (7.9 m)
Beam	9' 3" (2.8 m)
Draft	16 in. (0.41 m)
Height, Keel to Top (Light Folded)	118 in. (3 m)
Bridge Clearance Hard Top	102 in. (2.59 m)
Max. Weight Boat (w/ Fluids, Largest HP)	7348 lbs (3333 kg)
Fuel Tank Capacity	146 gal (553 L)
Freshwater Tank Capacity	12 gal (45 L)
Holding Tank Capacity	12 gal (45 L)



DESIGNATED OCCUPANT SEATING

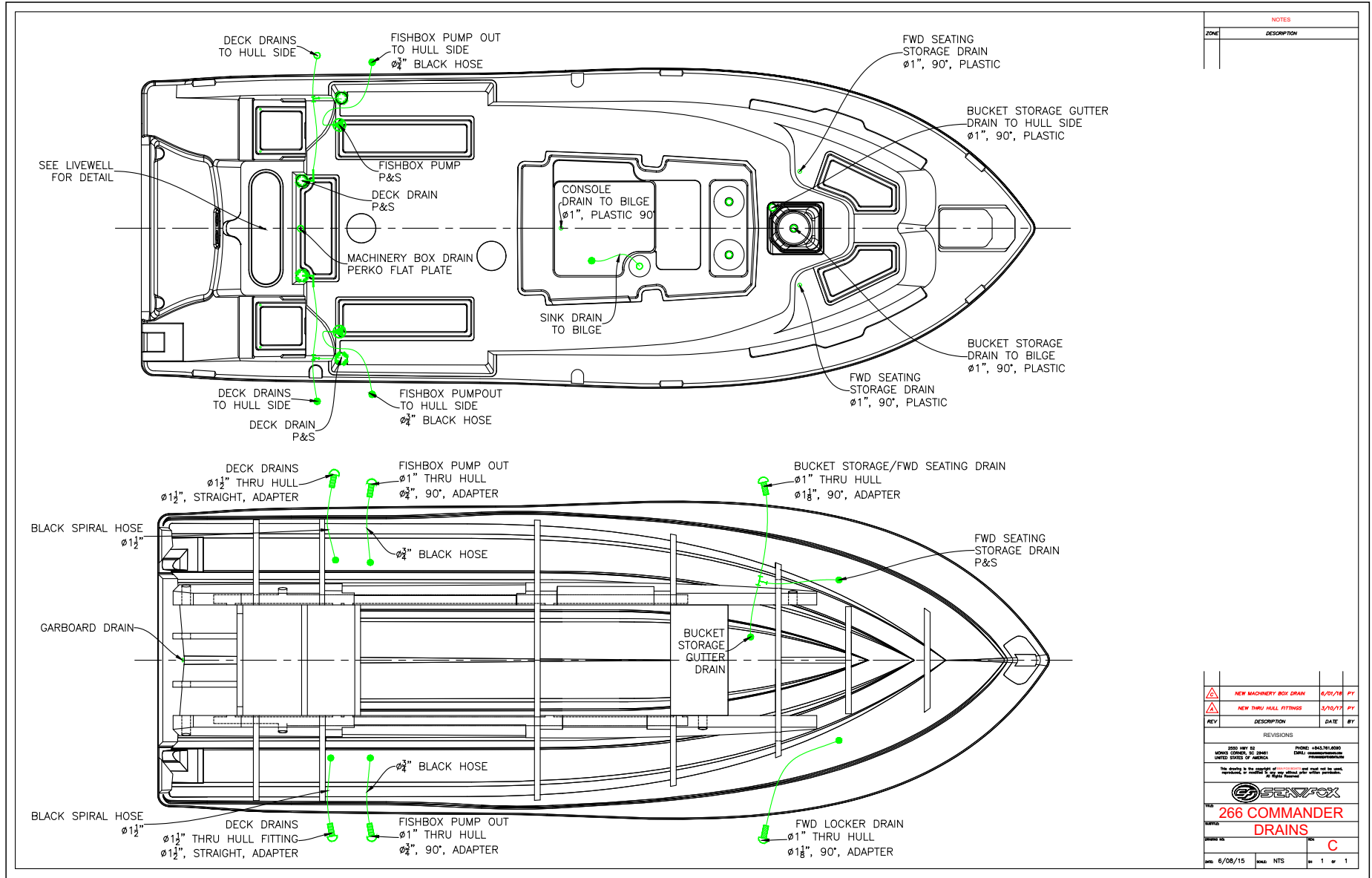
Be sure all passengers are properly seated in designated seating positions and not riding on the bow, bow pulpit, deck, gunwale or rear sun deck while underway. Passengers must use hand-holds and use caution when riding in the bow. Move to the aft passenger seats during rough water operation or if visibility is restricted.



● = Seat position

SFOX-0019

COMMANDER DRAINS

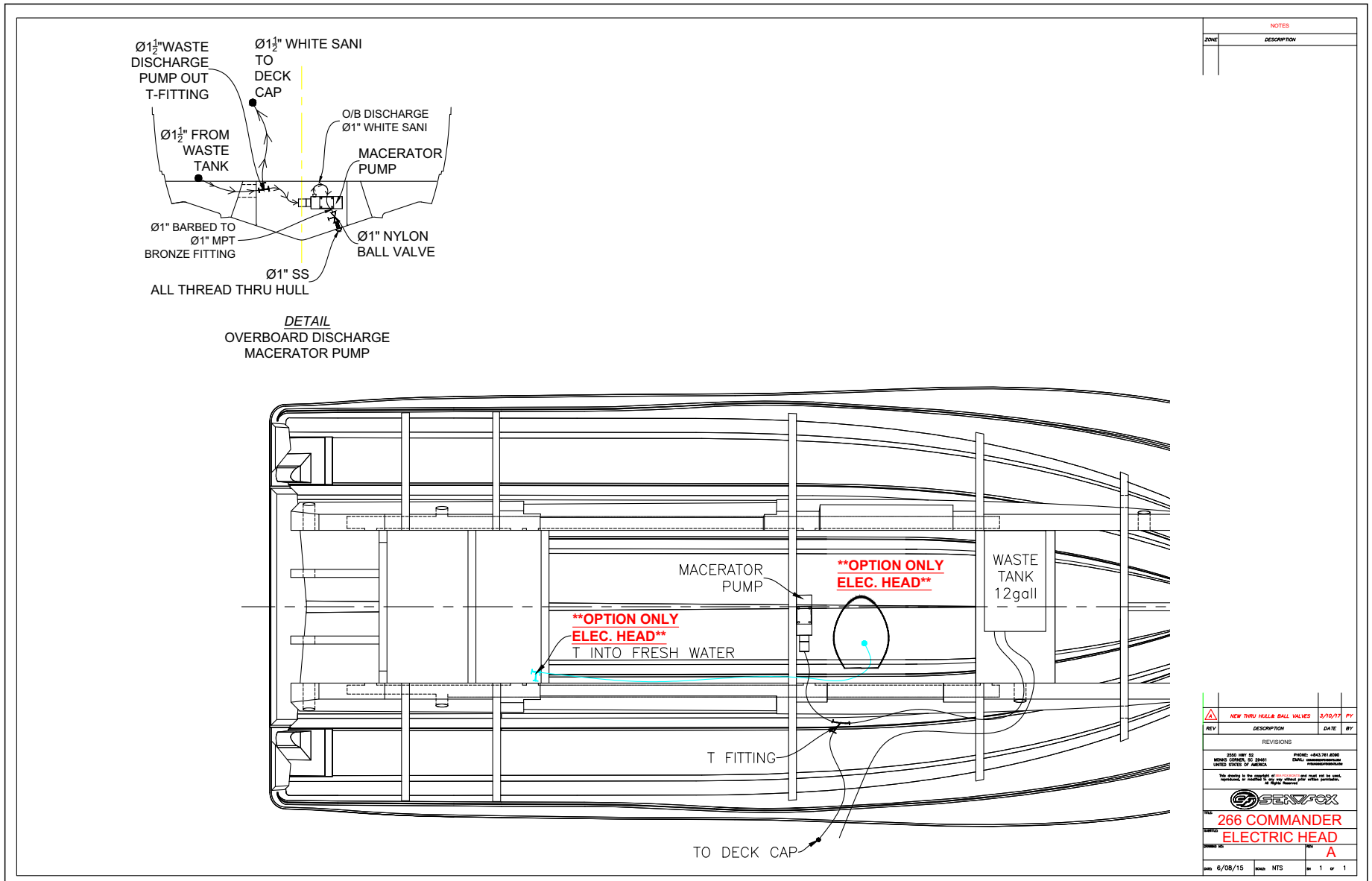


NOTES	
ZONE	DESCRIPTION

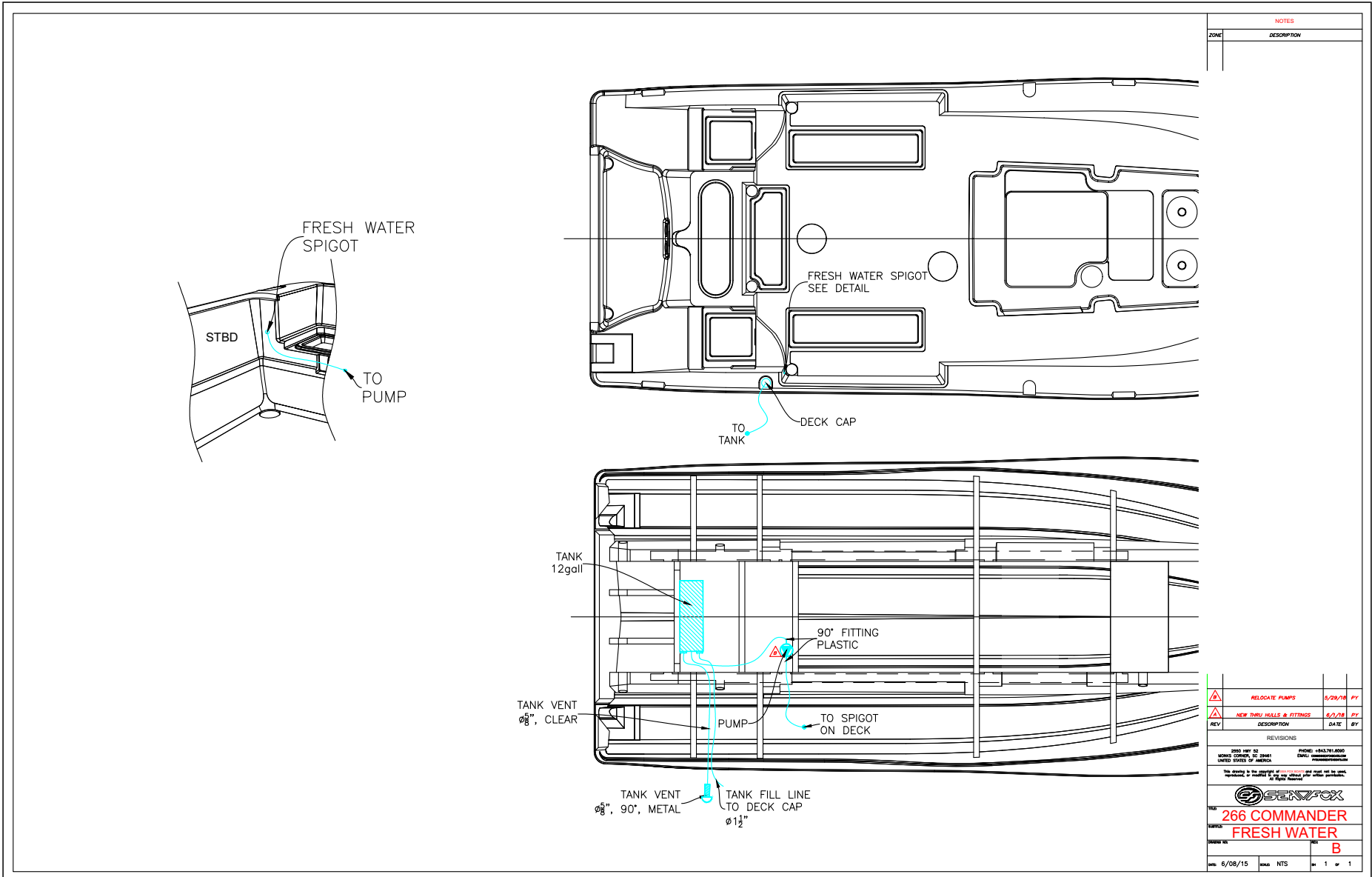
REV	DESCRIPTION	DATE	BY
1	NEW MACHINERY BOX DRAIN	6/10/16	PT
2	NEW THRU HULL FITTINGS	3/10/17	PT

REVISIONS	
2550 HWY 82 WOODS CROSS, VA 22641 UNITED STATES OF AMERICA	PHONE: +843.761.0090 EMAIL: commander@seafox.com www.seafox.com
This drawing is the property of SeaFox Boats and shall not be used, copied, reproduced, or transmitted in any form or by any means, electronic, mechanical, photocopying, recording, or by any information storage and retrieval system, without the prior written permission of SeaFox Boats.	
266 COMMANDER DRAINS	
DATE: 6/08/15	ISSUE: NTS
REV: 1	OF: 1

COMMANDER ELECTRIC HEAD SYSTEM



COMMANDER FRESH WATER SYSTEM



NOTES	
ZONE	DESCRIPTION

REV	DESCRIPTION	DATE	BY
1	RELOCATE PUMPS	5/29/16	PY
2	NEW THRU HULLS & FITTINGS	8/1/16	PY

REVISIONS

DESIGN: 1484796.0000
 CHECKED: 1484796.0000
 DRAWN: 1484796.0000
 UNITED STATES OF AMERICA

This drawing is the property of SEAFOX and shall not be used, reproduced, or modified in any way without the written consent of SEAFOX.

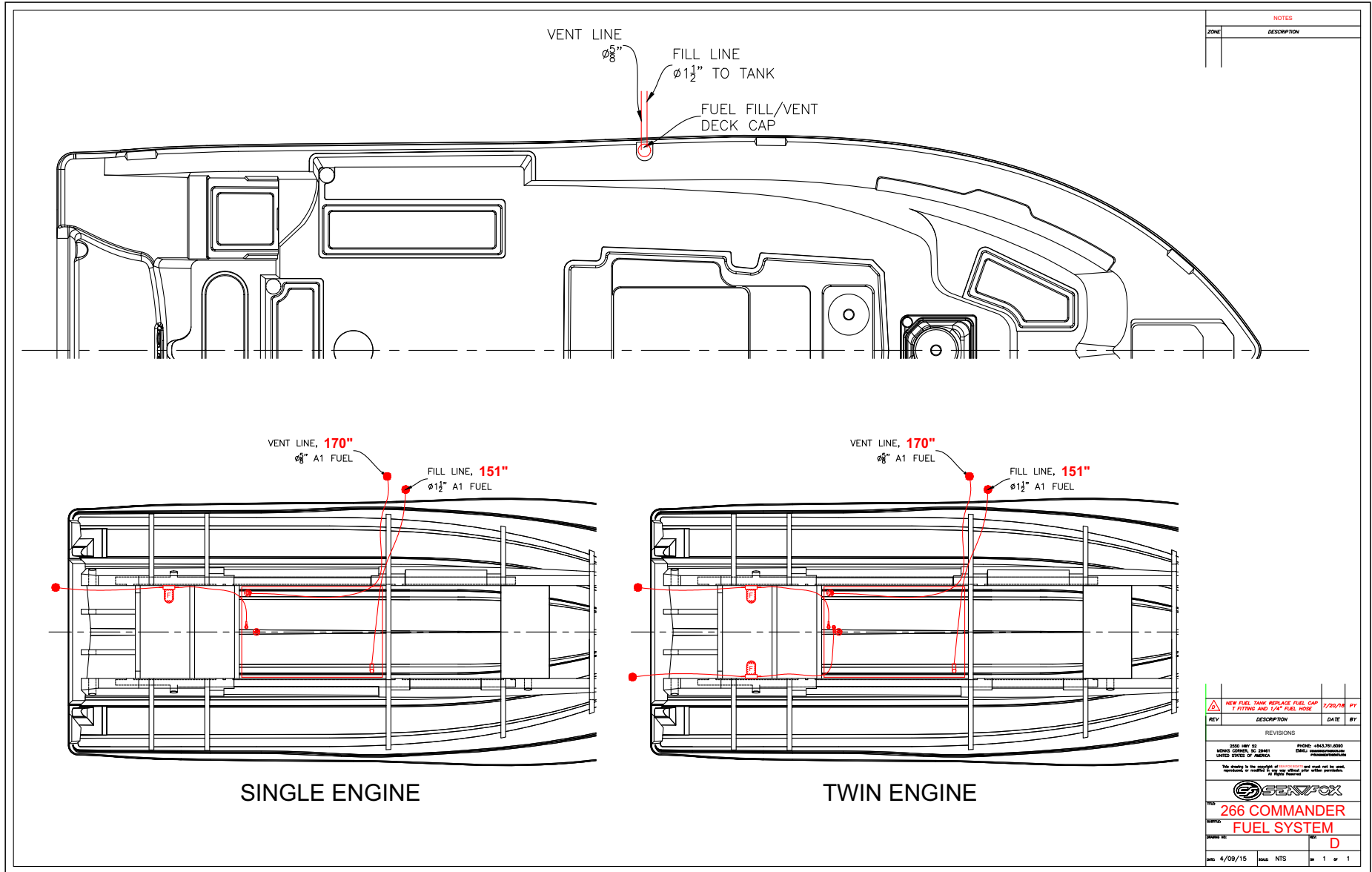
SEAFOX

266 COMMANDER
 FRESH WATER

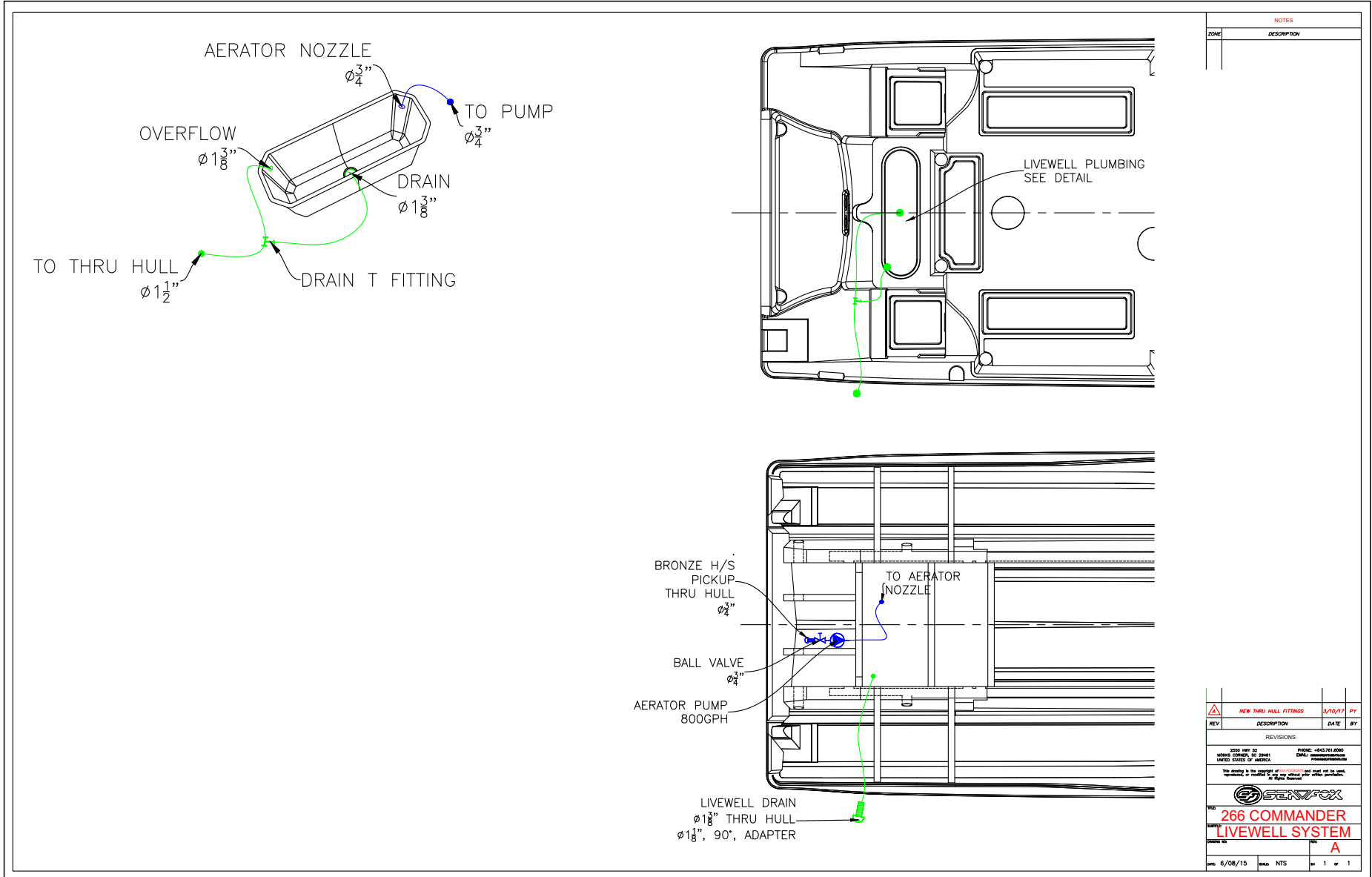
REV: B

DATE: 6/08/15 DRAWN: NTS SHEET: 1 OF 1

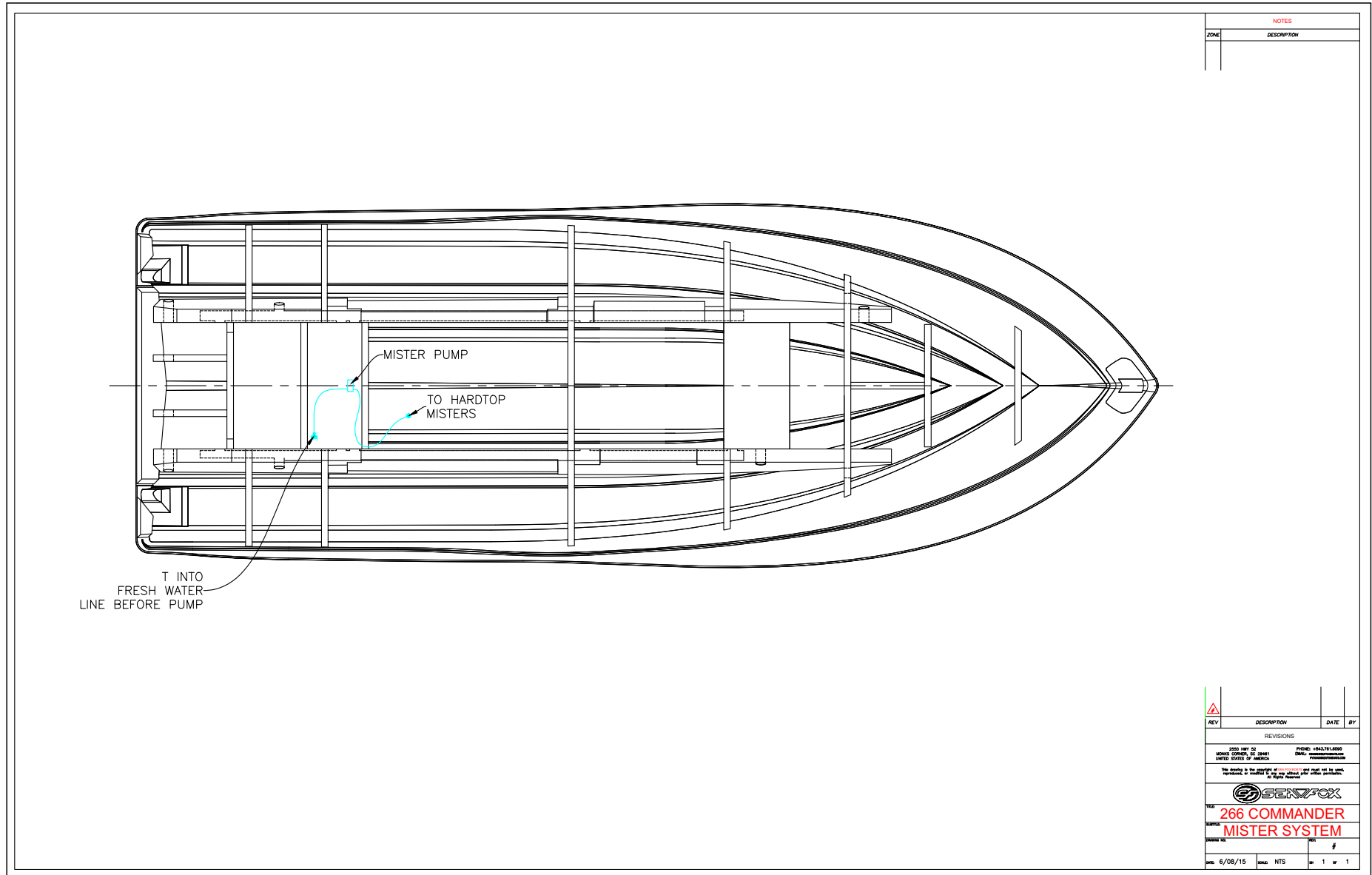
COMMANDER FUEL SYSTEM



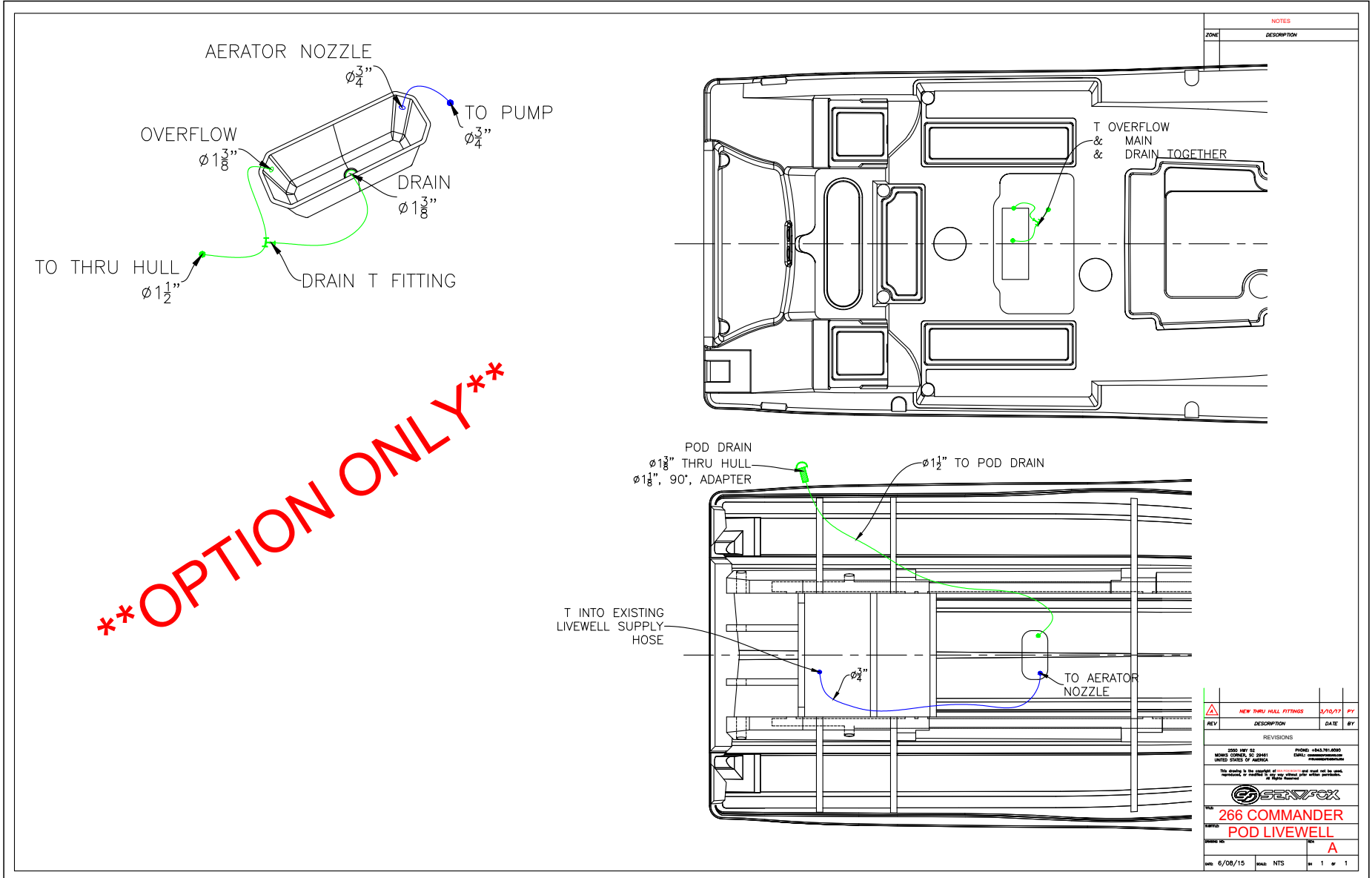
COMMANDER LIVEWELL SYSTEM



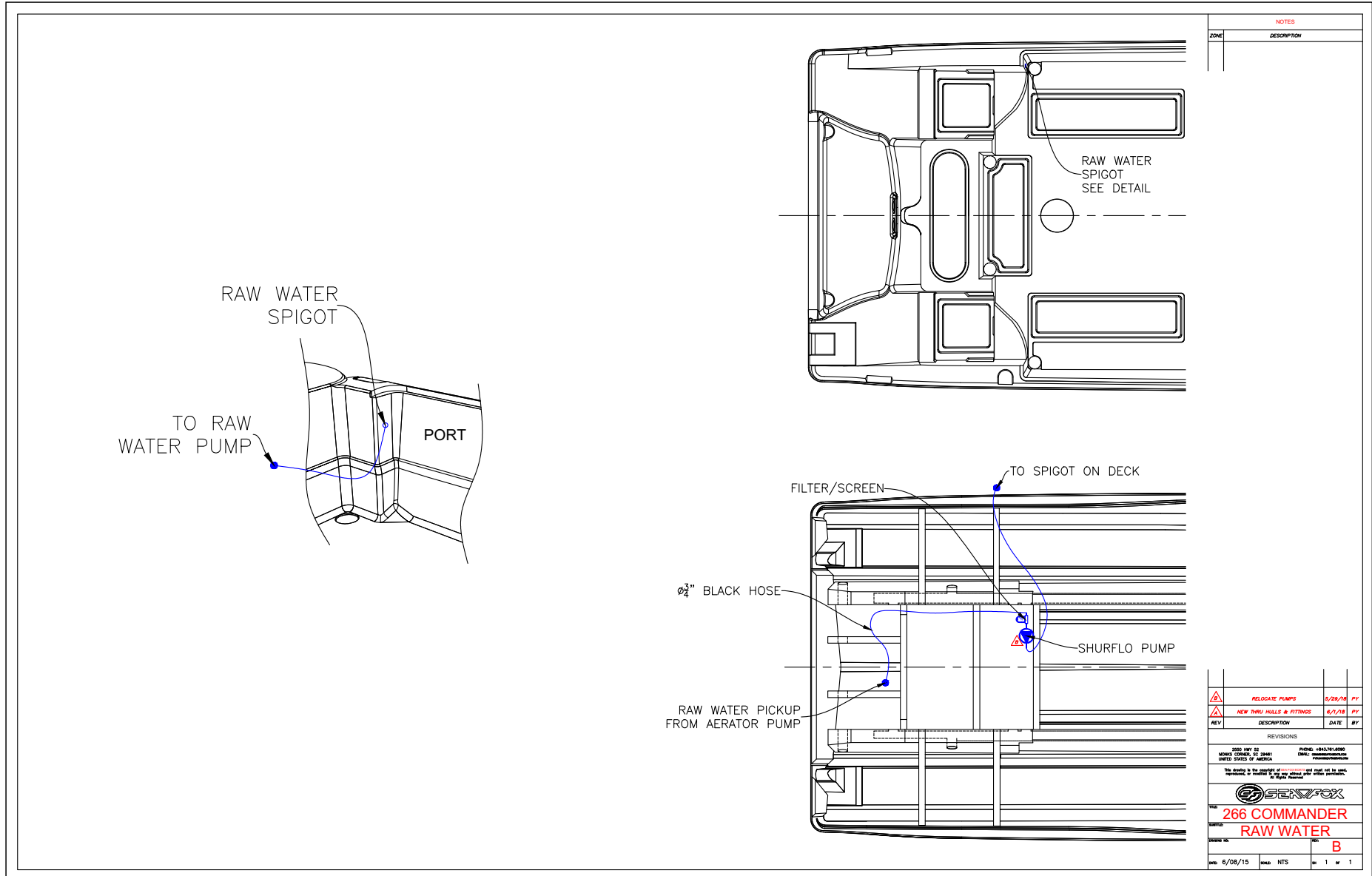
COMMANDER MISTER SYSTEM



COMMANDER POD LIVEWELL SYSTEM



COMMANDER RAW WATER SYSTEM



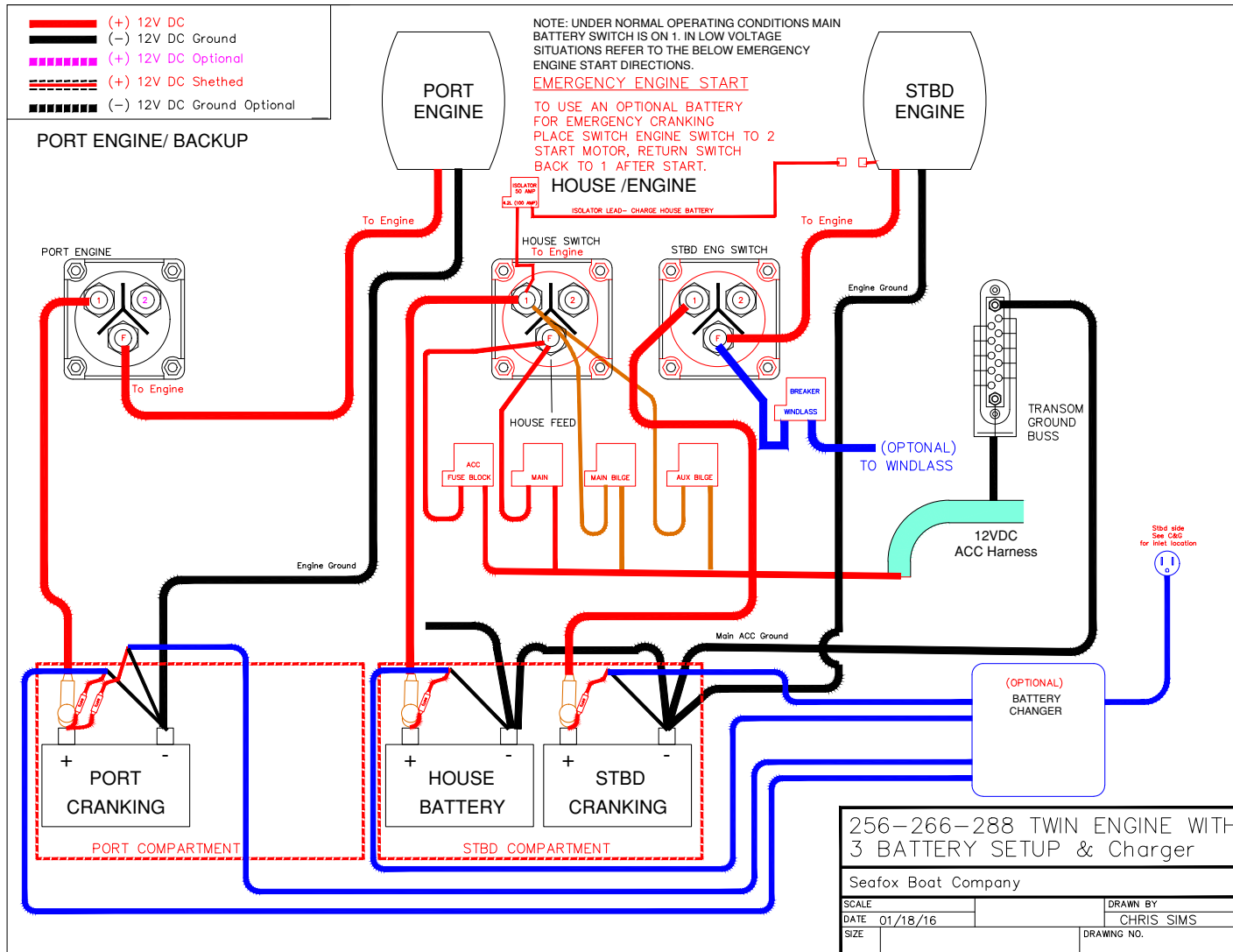
NOTES	
ZONE	DESCRIPTION

REV	DESCRIPTION	DATE	BY
△	RELOCATE PUMPS	6/29/16	PY
△	NEW THRU HULLS & FITTINGS	6/1/16	PY

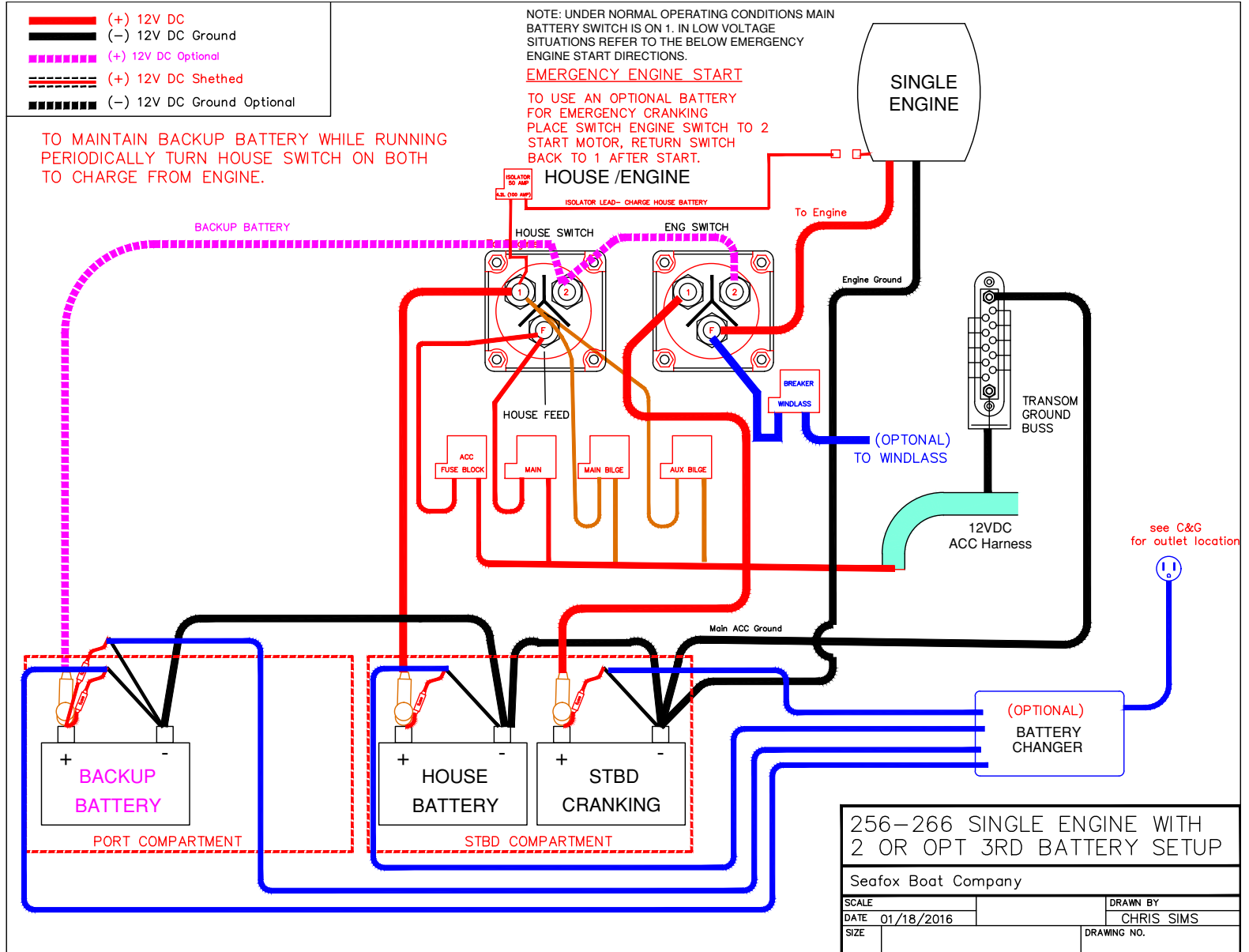
REVISIONS			
2000 SHIP ID	PROJECT	DATE	BY
NOVUS CORP., 20040	EMG		
UNITED STATES OF AMERICA	DESIGN/CONSTRUCTION		
This drawing is the property of SEAFOX and shall not be used, reproduced, or modified in any way without their written permission.			
266 COMMANDER			
RAW WATER			
REV: B			
DATE: 6/08/15	SCALE: NTS	PAGE: 1 OF 1	

ELECTRICAL SCHEMATICS

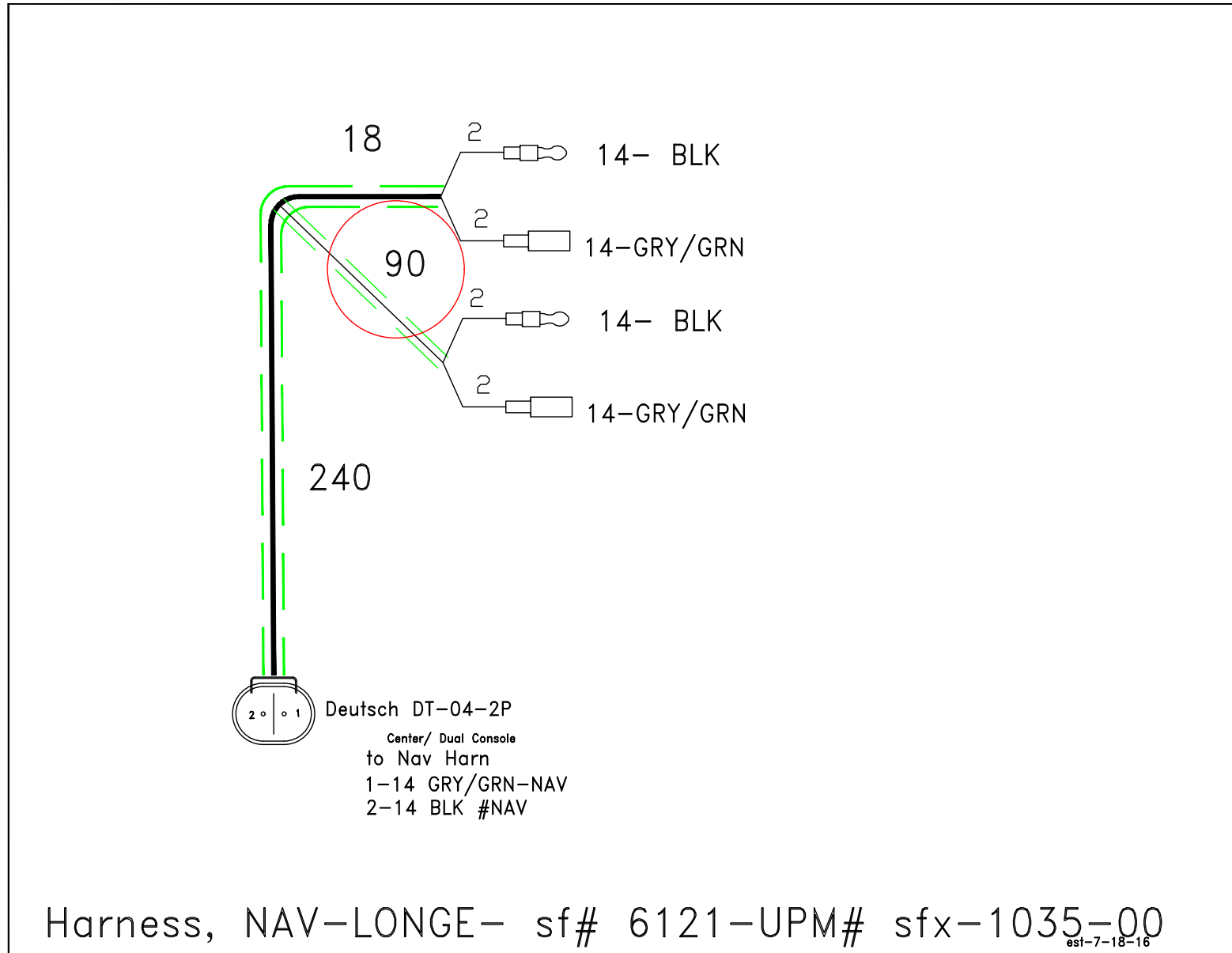
TWIN ENGINE WITH 3-BATTERY SETUP AND CHARGER



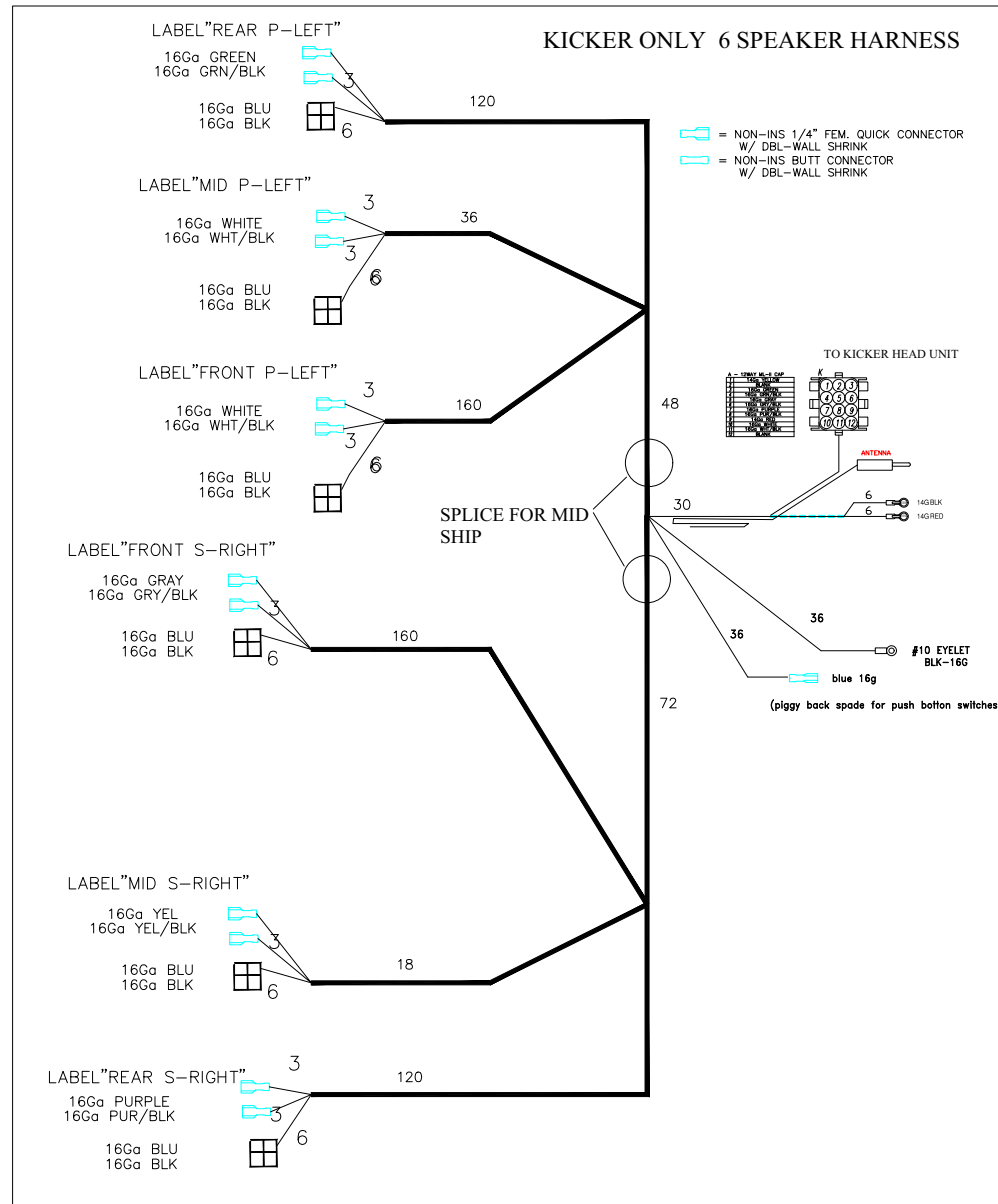
SINGLE ENGINE WITH 2 OPTIONAL 3RD-BATTERY SETUP



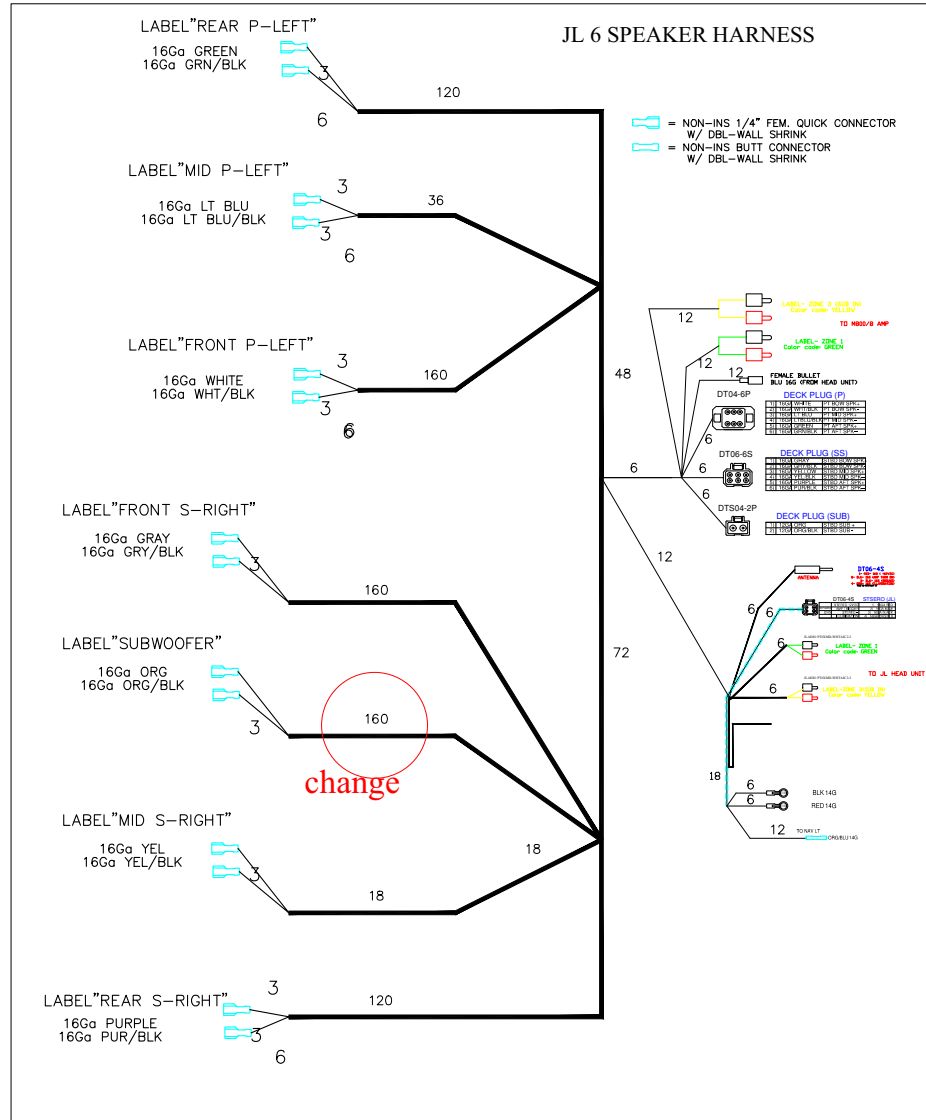
HARNES NAV LT LG W/DEUTSCH (P/N 6121)



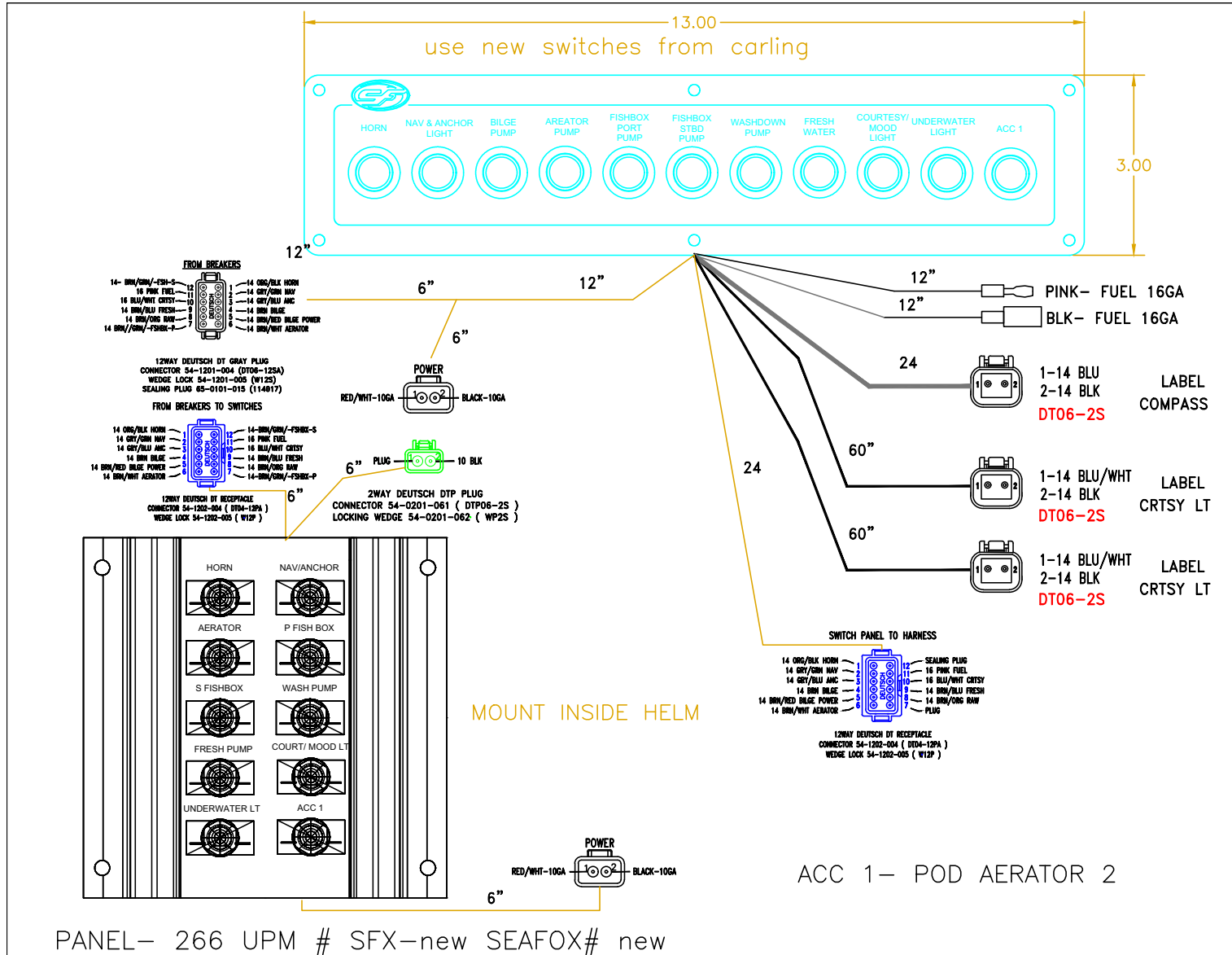
HARNES KICKER ONLY 6-SPEAKER



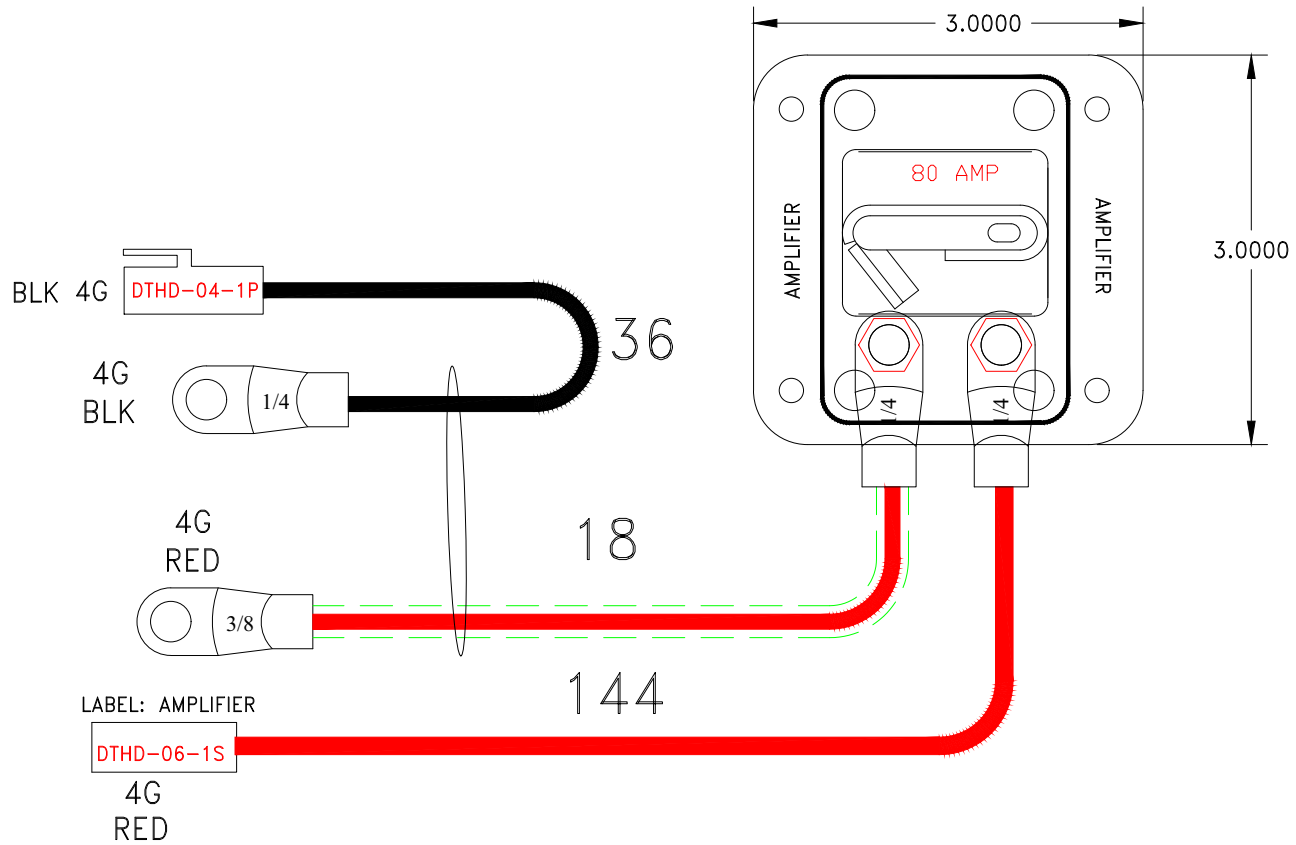
HARNES JL 6-SPEAKER



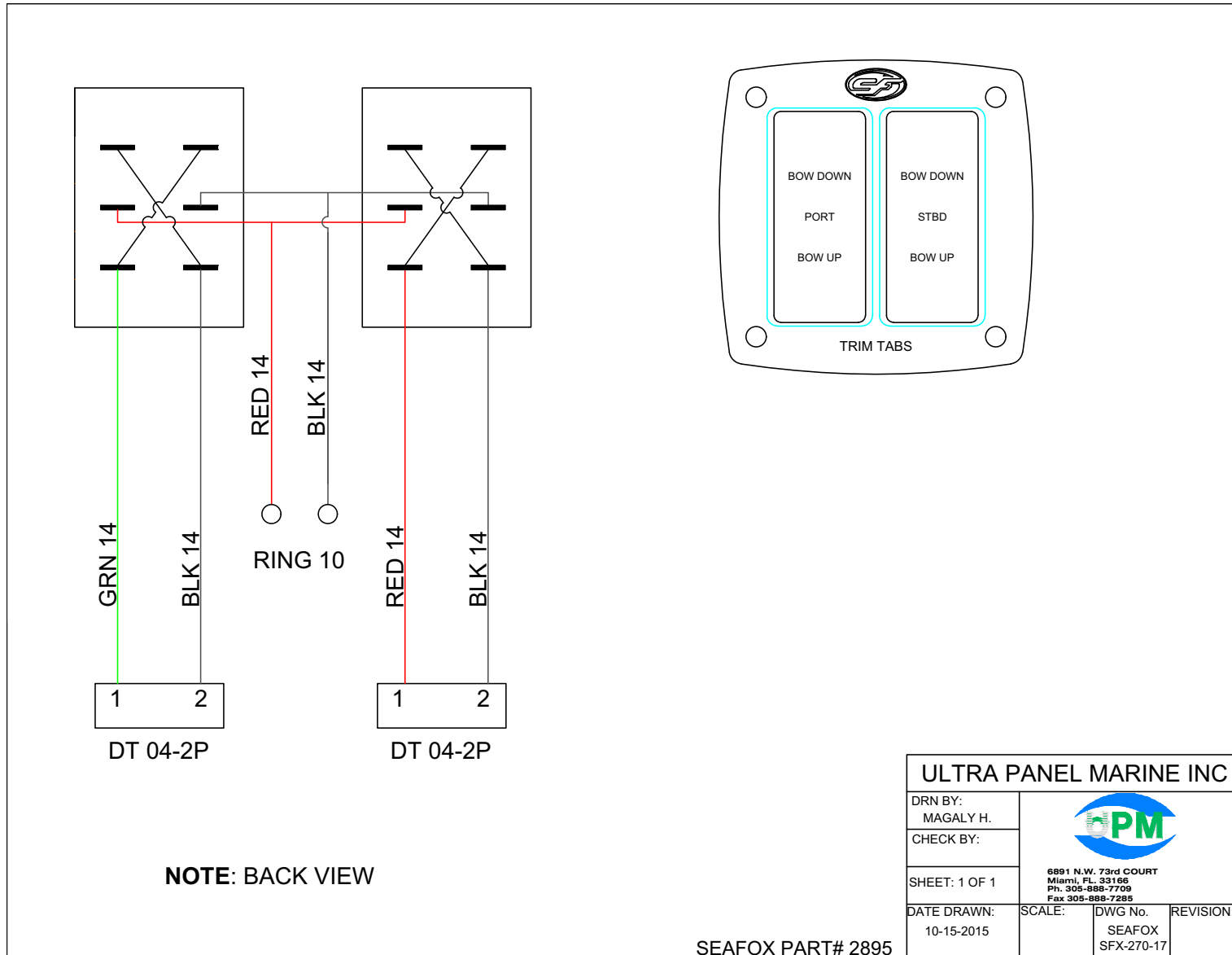
PANEL



JL AUDIO BREAKER KIT LONG 800/8

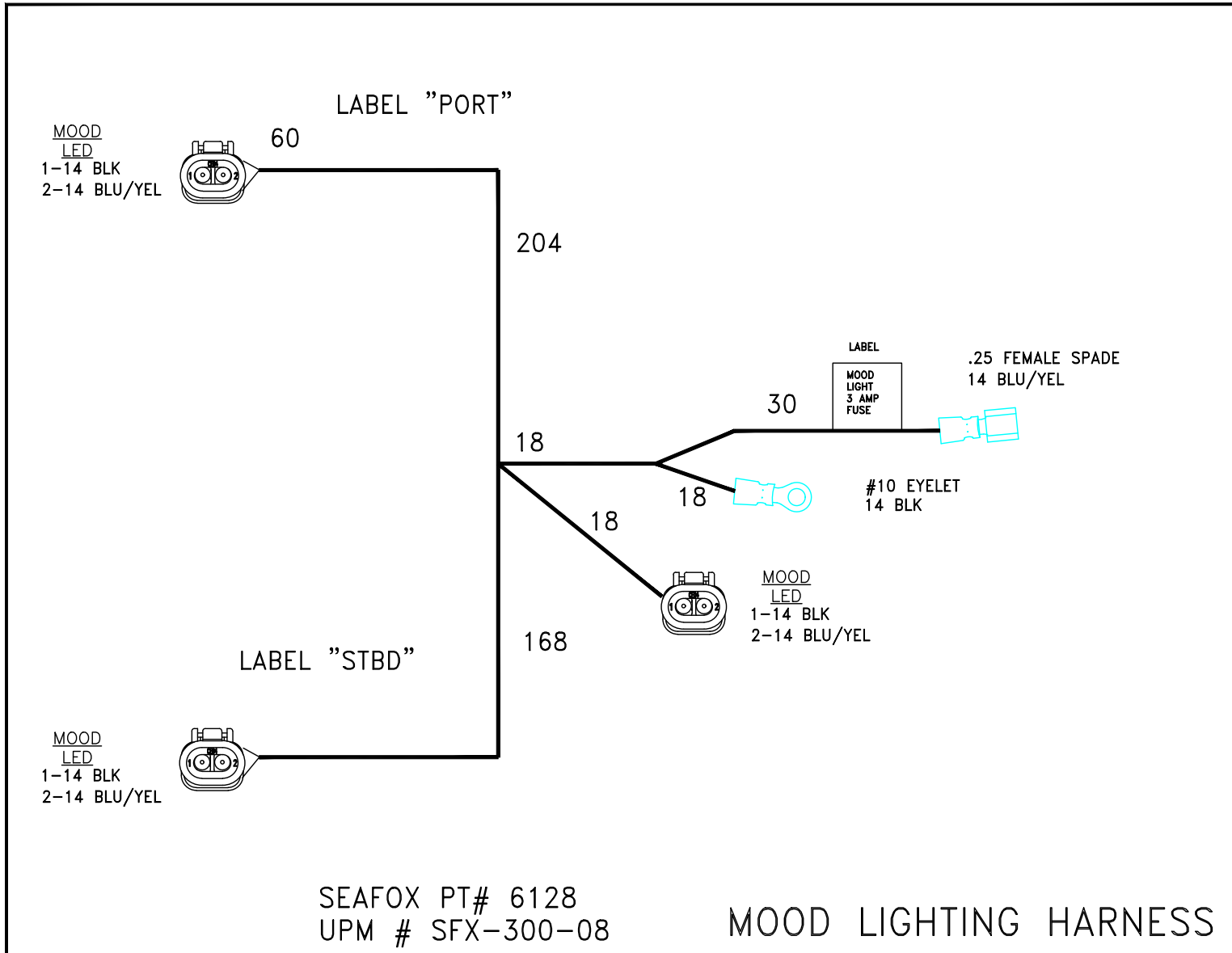


TRIMTABS ELECTRICAL SWITCH STANDARD (P/N 2895) – OPTIONAL

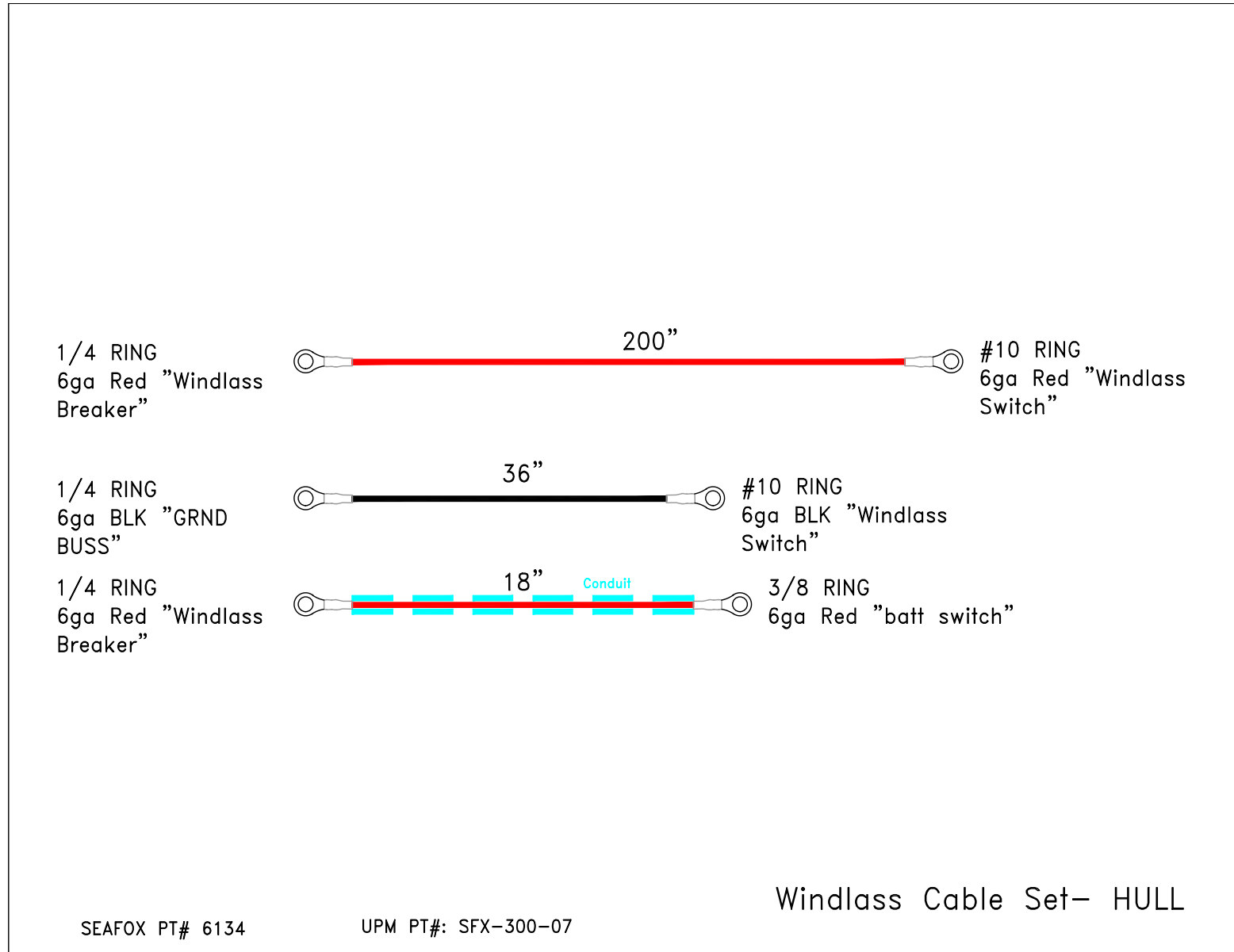




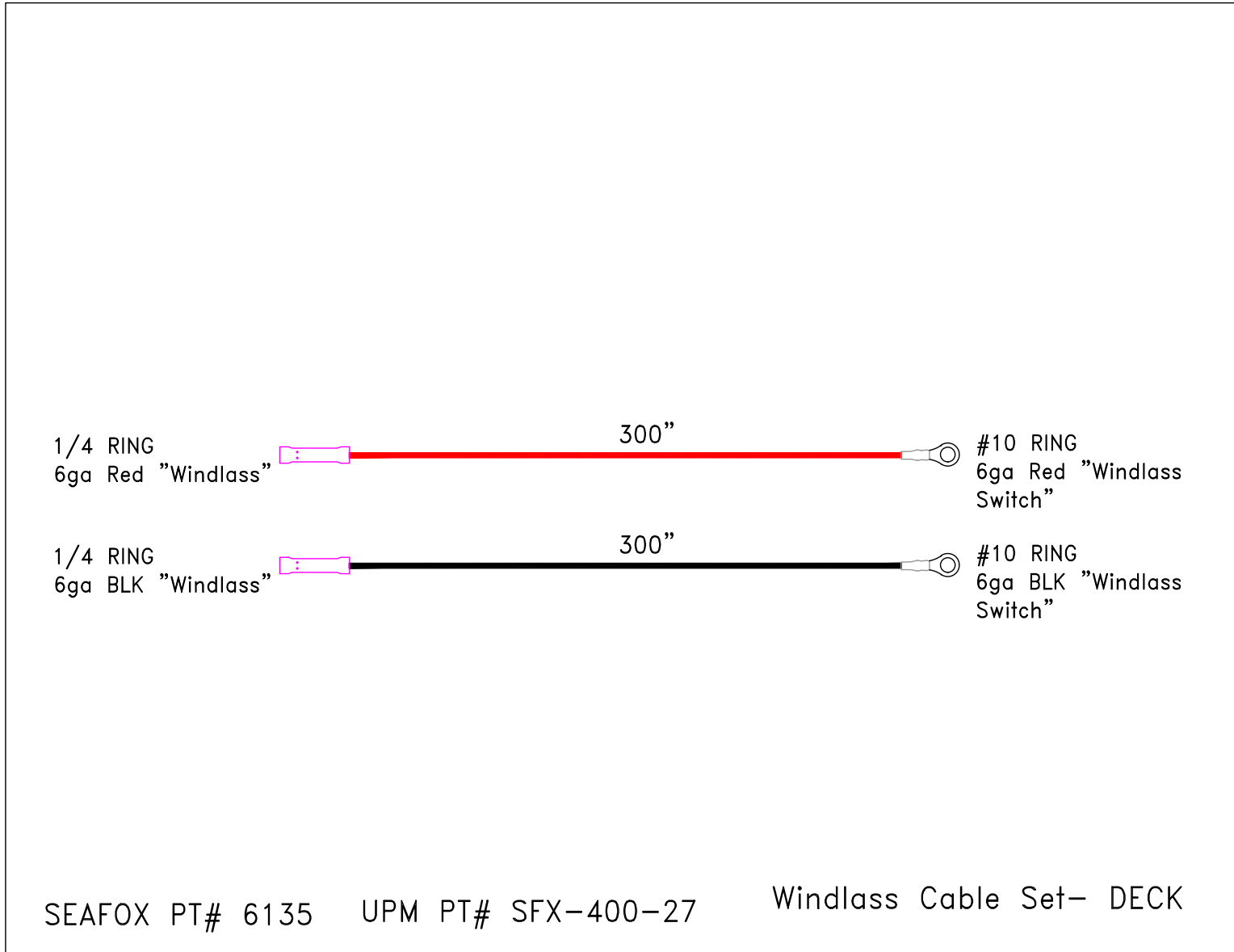
HARNESS MOOD LIGHT W/DEUTSCH (P/N 6128) – OPTIONAL



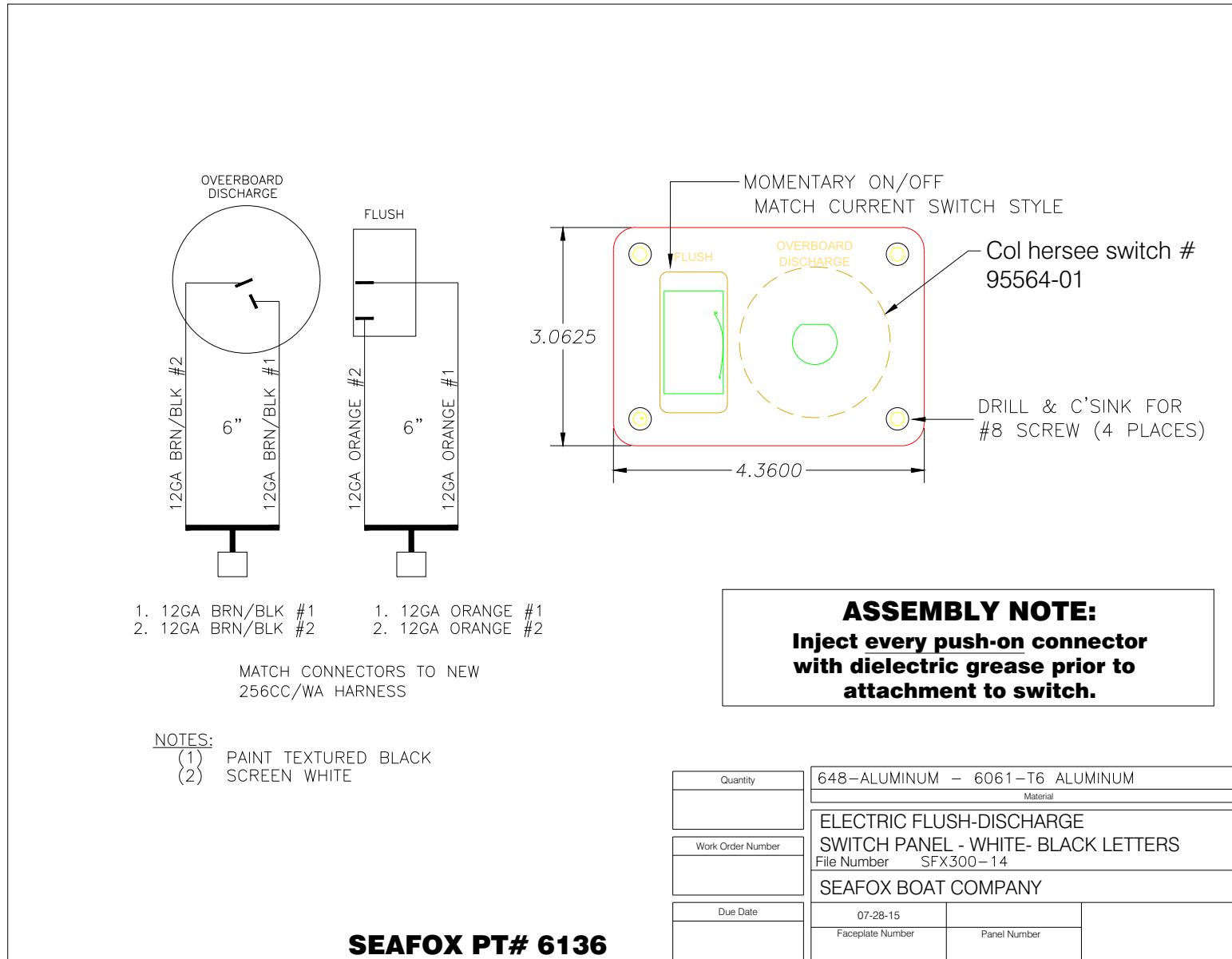
HARNESS WINDLASS HULL AFT BATTERY (P/N 6134) – OPTIONAL



HARNESS WINDLASS DECK OPTION (P/N 6135) – OPTIONAL



HEAD PANEL SWITCH ORB (P/N 6136) – OPTIONAL



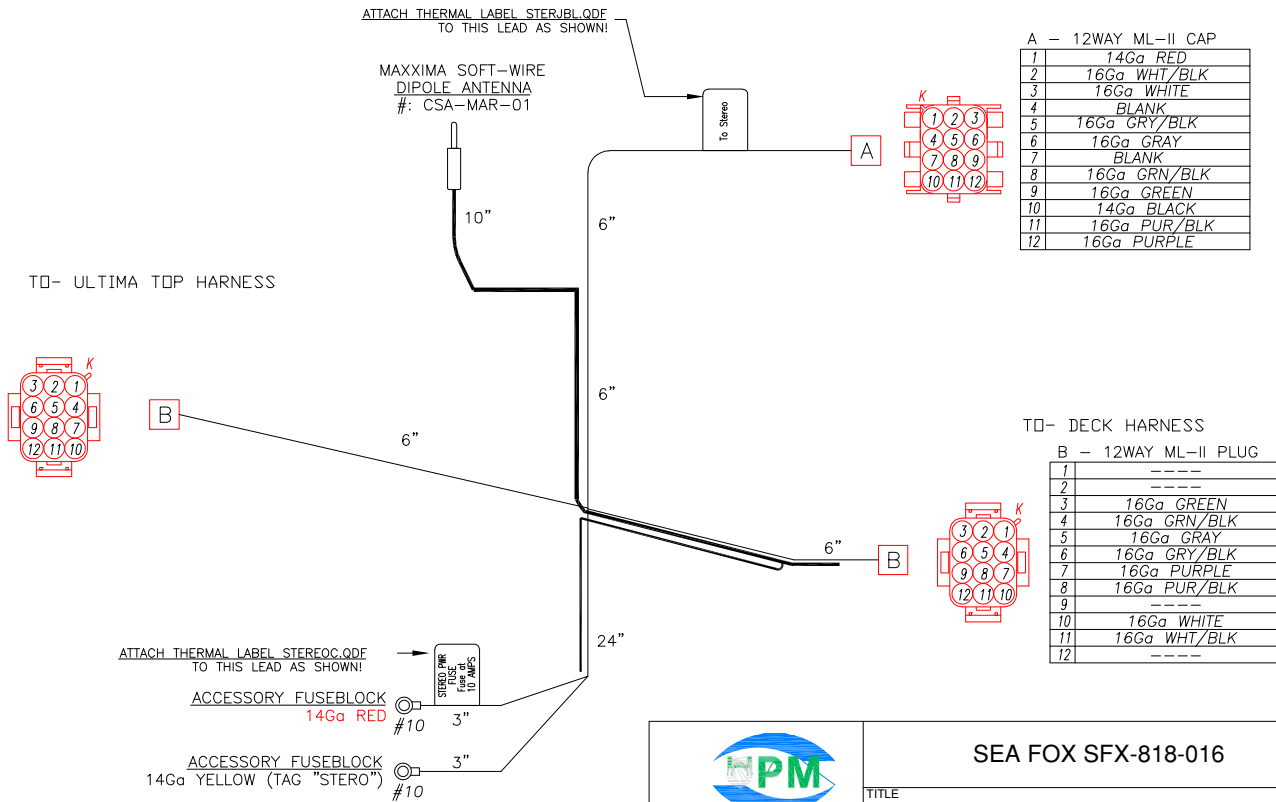
HARNES STEREO KICKER CAN 2016 (P/N 6851) – OPTIONAL

NOTES:

- (1) SPLICE CONNECTION IS SOLDER DIPPED AND INSULATED WITH ADHESIVE-LINED HEAT-SHRINK
- (2) TERMINAL LEGEND:
 - = ADHESIVE-LINED CRIMP CONNECTOR
 - = NON-INS 1/4" FEM. QUICK CONNECTOR W/ DBL-WALL SHRINK
 - = NON-INS 0.205" FEM. QUICK CONNECTOR W/ DBL-WALL SHRINK
 - = #8 SNAP SPADE W/ DBL-WALL SHRINK
 - = 0.156 NON-INS MALE W/ BLUE INSULATOR
 - = 0.156 NON-INS FEMALE W/ BLUE INSULATOR
 - = RING TERMINAL W/ ADHESIVE-LINED SHRINK OR SOLDER DIPPED AND ADHESIVE-LINED SHRUNK
- (3) " " = TAGGING TEXT

B - 12WAY ML-II PLUG

1	----
2	----
3	16Ga GREEN
4	16Ga GRN/BLK
5	16Ga GRAY
6	16Ga GRY/BLK
7	16Ga PURPLE
8	16Ga PUR/BLK
9	----
10	16Ga WHITE
11	16Ga WHT/BLK
12	----



A - 12WAY ML-II CAP

1	14Ga RED
2	16Ga WHT/BLK
3	16Ga WHITE
4	BLANK
5	16Ga GRY/BLK
6	16Ga GRAY
7	BLANK
8	16Ga GRN/BLK
9	16Ga GREEN
10	14Ga BLACK
11	16Ga PUR/BLK
12	16Ga PURPLE

T0- DECK HARNESS

B - 12WAY ML-II PLUG

1	----
2	----
3	16Ga GREEN
4	16Ga GRN/BLK
5	16Ga GRAY
6	16Ga GRY/BLK
7	16Ga PURPLE
8	16Ga PUR/BLK
9	----
10	16Ga WHITE
11	16Ga WHT/BLK
12	----

SEAFXQX PT# 6851

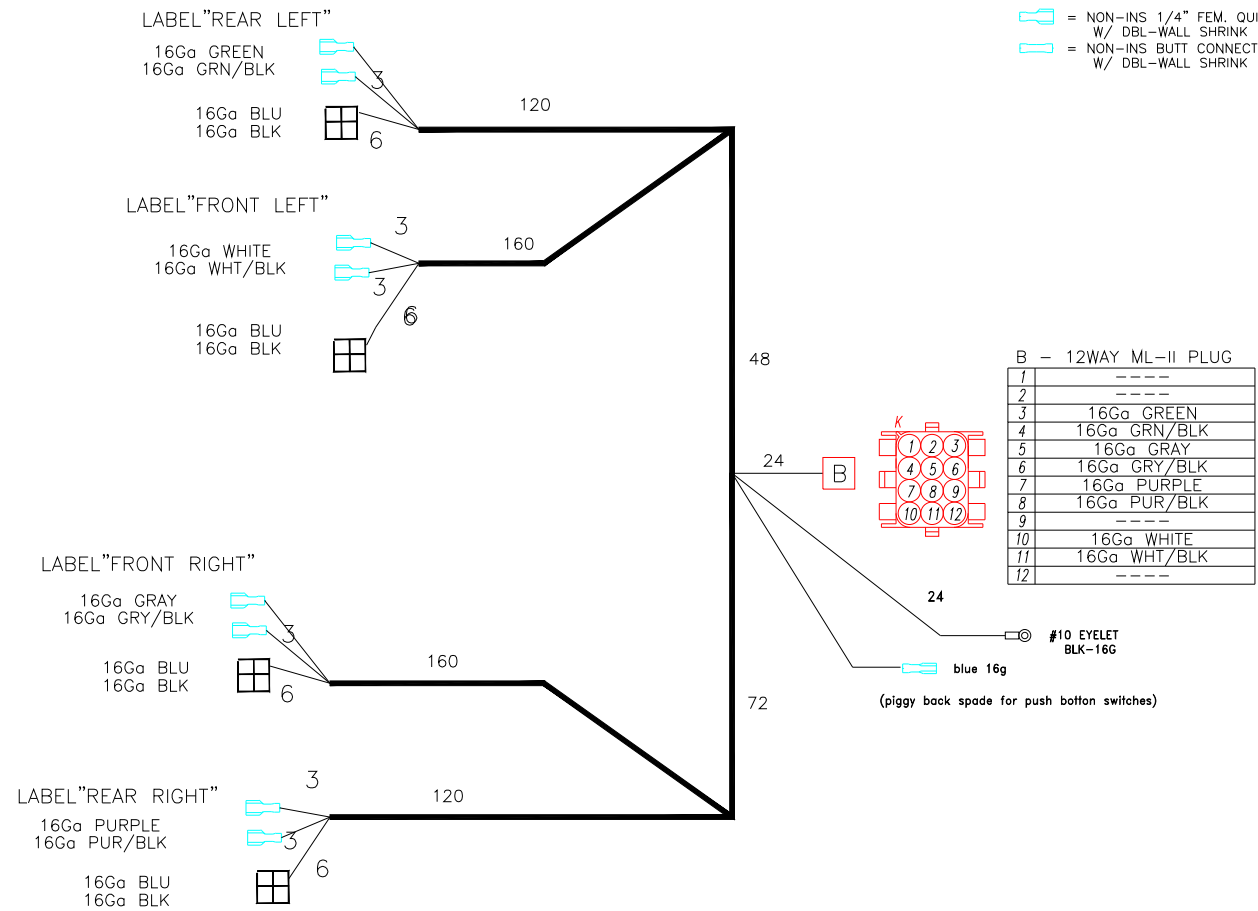
<p>6891 N.W. 73rd COURT Miami, FL 33156 Ph. 305-888-7709 Fax 305-888-7285</p>	SEA FOX SFX-818-016	
	TITLE KICKER 8-SPEAKER STEREO ADAPTER HARNESS	
SIZE	CAGE CODE	DWG NO
SCALE	SHEET	

STEREO KICKER DECK 2016 W/LED (P/N 6852) – OPTIONAL

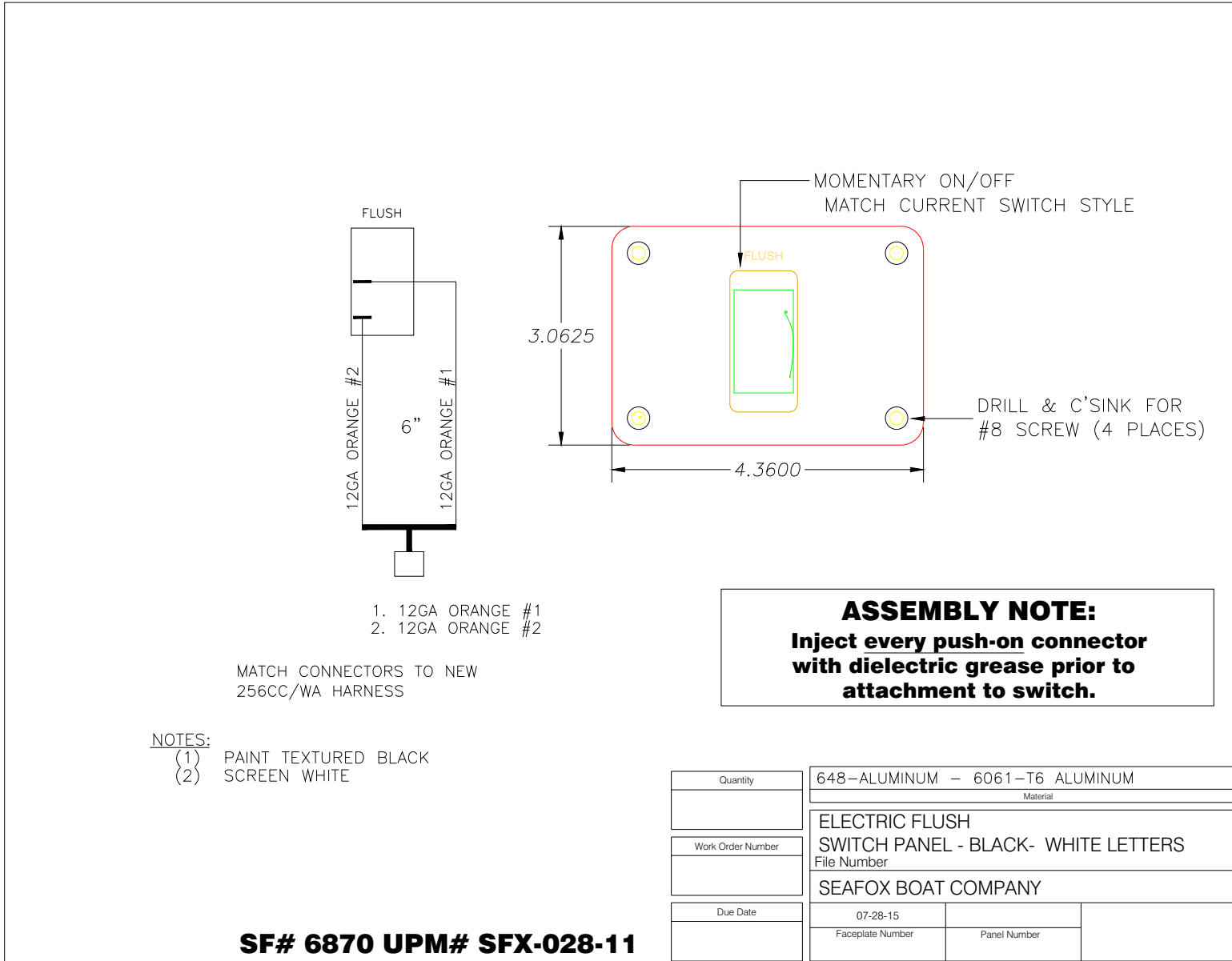
CUSTOMER SEAFOX BOAT CO. W/O # _____
 PART # SF# 6852-UPM# SFX-489-13 DUE DATE _____
 FILENAME _____ MODEL ALL CENTER CONSOLES
 DESCRIPTION HARNESS DECK SPEAKER W/LED

NOTES:

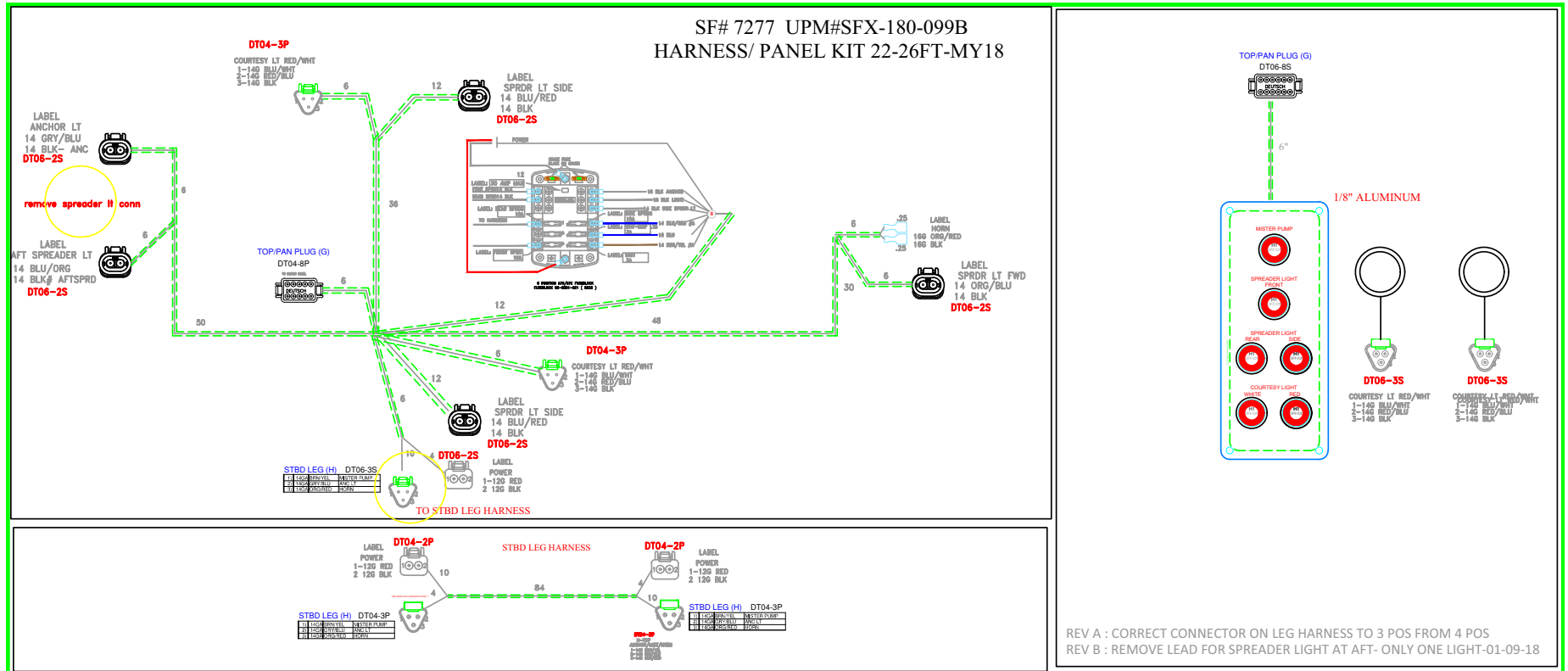
- = NON-INS 1/4" FEM. QUICK CONNECTOR W/ DBL-WALL SHRINK
- = NON-INS BUTT CONNECTOR W/ DBL-WALL SHRINK



HEAD PANEL SWITCH ORB (P/N 6870) – OPTIONAL



U PANEL SWITCH/HARNESS ULTIMA (P/N 7277) – OPTIONAL





This Page Intentionally Left Blank

This Page Intentionally Left Blank



This Page Intentionally Left Blank

This Page Intentionally Left Blank



This Page Intentionally Left Blank



Sea Fox Boat Company, Inc.
2550 Highway 52
Moncks Corner, SC 29461-5024

Telephone: 843-761-6090
www.seafoxboats.com

Ken Cook Co.
Printed in U.S.A.
Rev 0819