



Owner's Manual Supplement

www.SeaFoxBoats.com

SEA FOX BOAT'S DISCLAIMER

The following Owner's Manual is provided for information and educational purposes only and is not intended to offer or provide legal advice or create a contractual relationship between Sea Fox Boat Company and the owner of any Sea Fox brand vessel. Please beware that as a vessel owner you have non-delegable responsibilities regarding the safety, maintenance, fitness, and operation of your vessel and the extent of such responsibilities is ultimately determined by Federal law and regulations, the general maritime law of the United States, the laws and regulations of the states and territories of the United States, or the laws and regulations of the country where you operate your vessel. To fully understand your responsibilities as a vessel owner, and before operating or letting any third-party operate your vessel, we recommend that you consult the services of a qualified lawyer in admiralty and maritime law.

TABLE OF CONTENTS

Introduction	3	Panel Switch Shroud (P/N 6510)	17
Specifications	3	Harness Nav Short	18
Designated Occupant Seating	4	Trimtabs Electrical Switch Standard (P/N 2895) – Optional	19
Plumbing Schematics	5	Harness Mood Light w/Deutsch (P/N 6128) – Optional	20
Viper Bilge System	5	Harness Stereo Infinity Con (P/N 6129) – Optional	21
Viper Drains	6	Harness Stereo Infinity Deck (P/N 6130) – Optional	22
Viper Drains (continued)	7	Harness Underwater Light w/Deutsch (P/N 6133) – Optional	23
Viper Fresh Water System	8	U Panel Switch Ultima (P/N 6463) – Optional	24
Viper Fuel System	9	Center Console Ultima Top – 2016 (P/N 6463, 6464 and 6476) – Optional	25
Viper Standard Livewell System	10	Harness Trimtab Electric 20 ft Lenco (P/N 6564) – Optional	26
Viper Mister System	11	Harness Stereo Kicker Con 2016 (P/N 6851) – Optional	27
Viper Pod Livewell System	12	Harness Stereo Kicker Deck 2016 (P/N 6852) – Optional	28
Viper Raw Water System	13	Panel Switch Shroud (P/N 6858) – Optional	29
Electrical Schematics	14		
Typical 2-Battery Setup in Console	14		
Harness Trolling Motor 180-240 (P/N 4823)	15		
Harness ACC w/Deutsch (P/N 6402)	16		



This Page Intentionally Left Blank

INTRODUCTION

Congratulations and Welcome Aboard! With so many boat brands to choose from, we want to congratulate you on your decision to choose Sea Fox Boats. For more than 24 years, Sea Fox offers the finest hand-crafted saltwater boats carefully balanced with the build-quality, features, styling and performance for the fairest price. Our passion for boating is evident in every model we make and we appreciate that you've noticed the Sea Fox difference.

We share your love for the moments spent on the water with friends and family, which is why every Sea Fox boat offers a unique blend of fishing/family options, technologies and innovative features. Your choice of a Sea Fox affirms that you have performed your research and compared the value of your model with the competition.

Whether you are new to the boating lifestyle or an old salt, we ask that **you and all other operators** read the owner's manual, this supplement, and all other literature provided with the boat **before** operating the boat or any equipment. We also recommend that all operators enroll in a boating safety course available online - see References and Contact Information in this section for education resources online.

This supplement contains model-specific information not included with the owner's manual. This manual is not intended to be a replacement for specific product literature provided by engine, accessory or other major equipment manufacturers, but rather to supplement that information.

Because of our philosophy of continuous product improvement, this manual serves as a general guide only, so the specifications and illustrations used may not match the equipment on your boat and are intended only as general reference views.

We welcome you to the Sea Fox family and wish you many years of boating enjoyment!

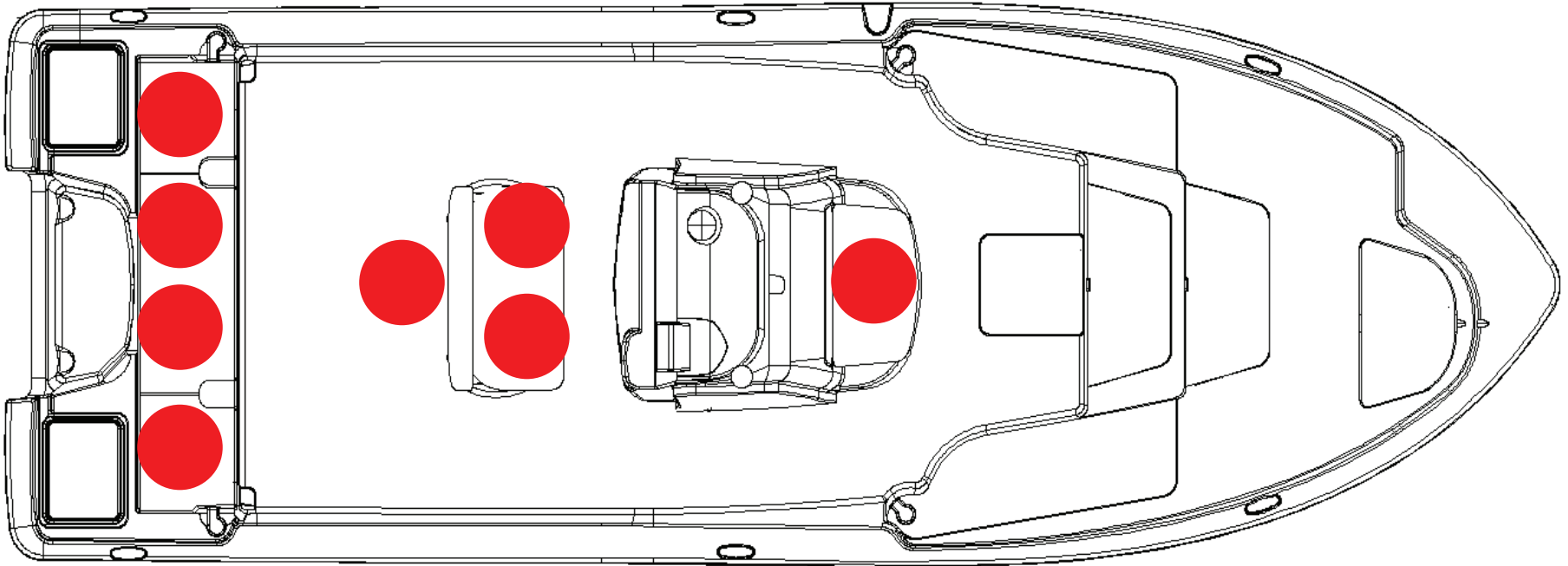
SPECIFICATIONS

Max. Weight Capacity	2200 lbs (1000 kg)
Persons	8
Persons Weight	1200 lbs (544 kg)
Max. HP	300 hp (224 kw)
L.O.A.	24' 4" (7.41 m)
Beam	8' 6" (2.59 m)
Draft	13 in. (0.33 m)
Height, Keel to Top (Light Folded)	106 in. (2.69 m)
Bridge Clearance Hard Top	93 in. (2.36 m)
Max. Weight Boat (w/ Fluids, Largest HP)	4645 lbs (2107 kg)
Fuel Tank Capacity	77 gal (291 L)
Freshwater Tank Capacity	6 gal (23 L)
Holding Tank Capacity	N/A



DESIGNATED OCCUPANT SEATING

Be sure all passengers are properly seated in designated seating positions and not riding on the bow, bow pulpit, deck, gunwale or rear sun deck while underway. Passengers must use hand-holds and use caution when riding in the bow. Move to the aft passenger seats during rough water operation or if visibility is restricted.

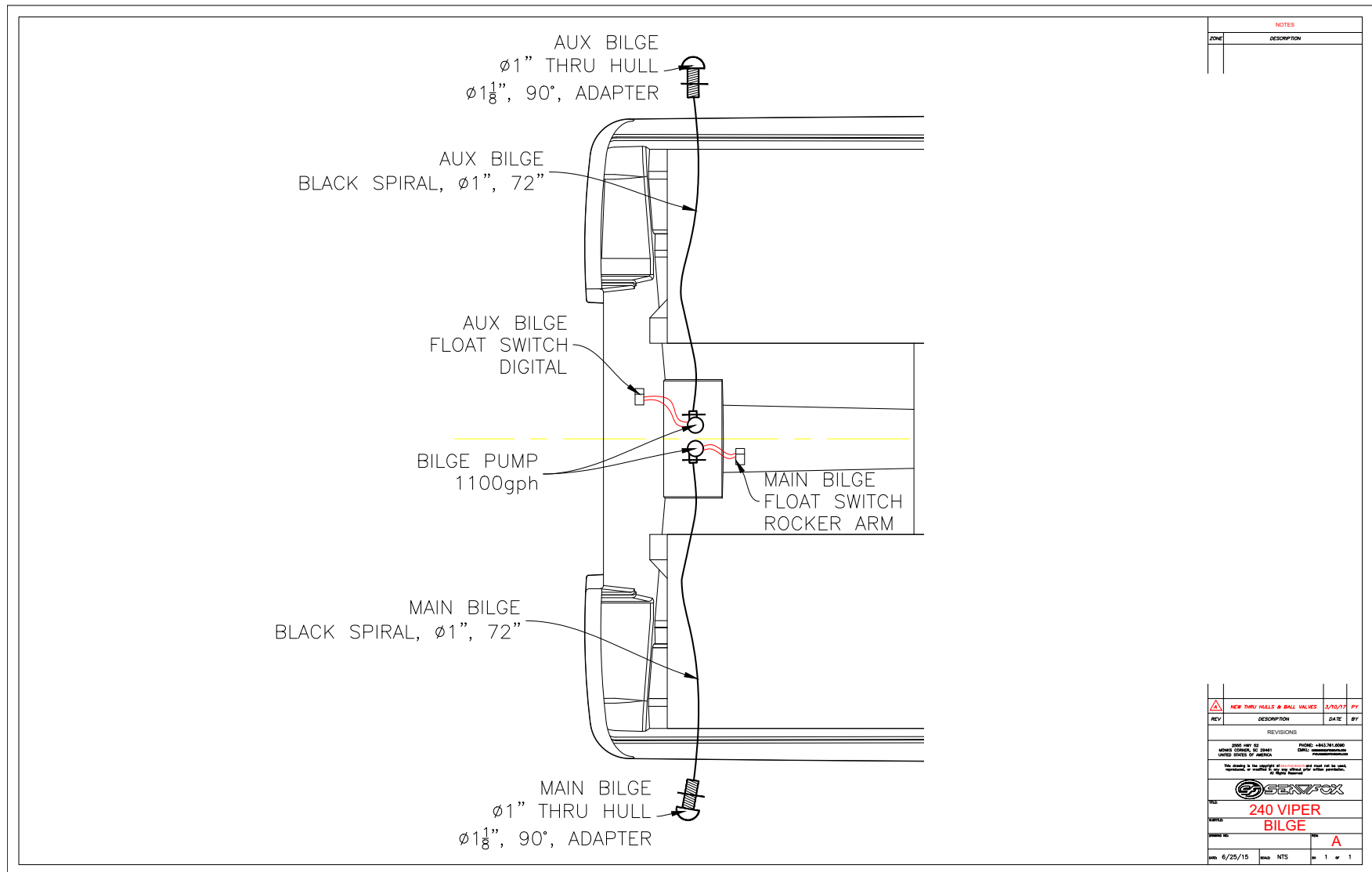


● = Seat position

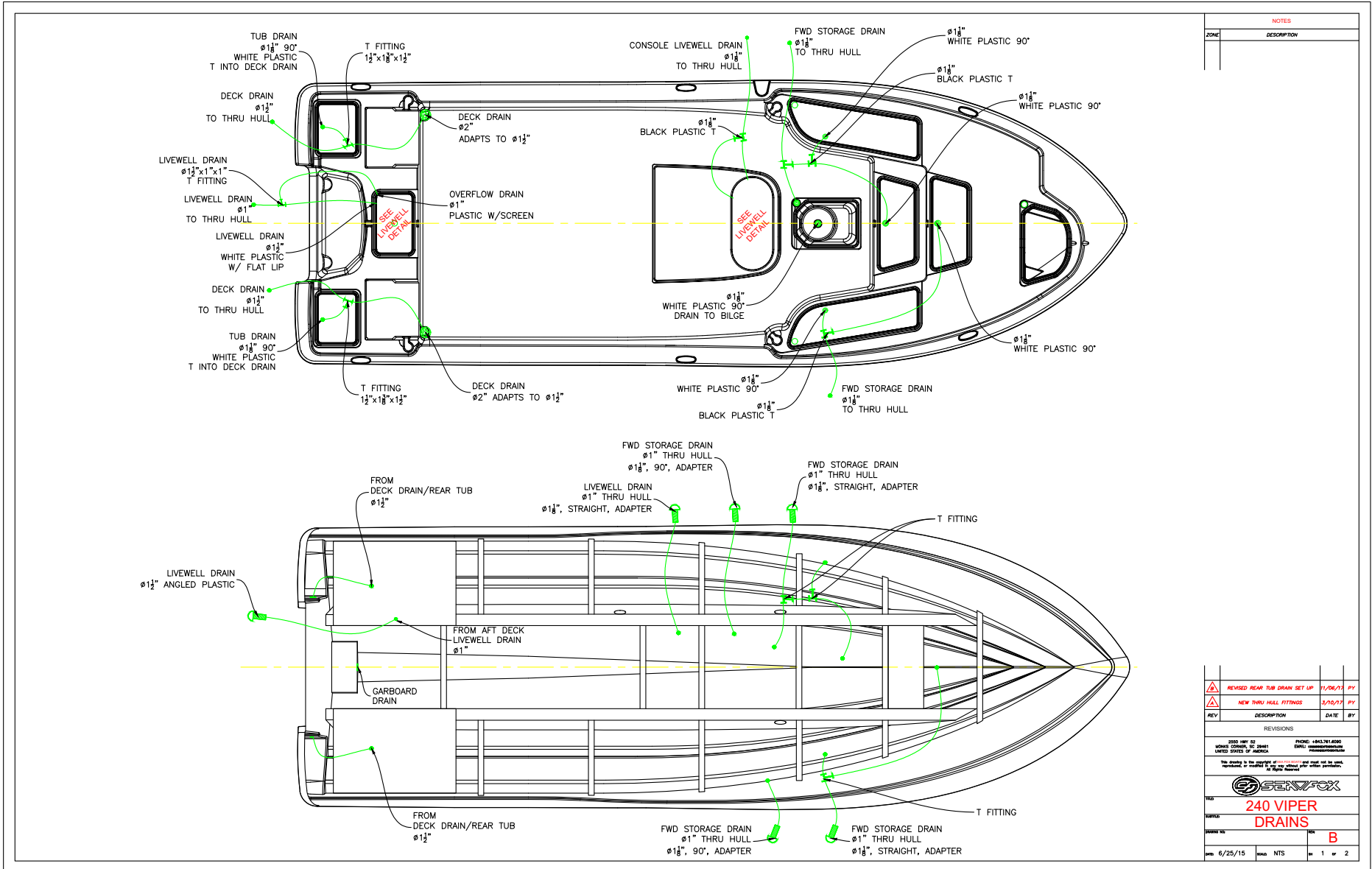
SFOX-0015

PLUMBING SCHEMATICS

VIPER BILGE SYSTEM

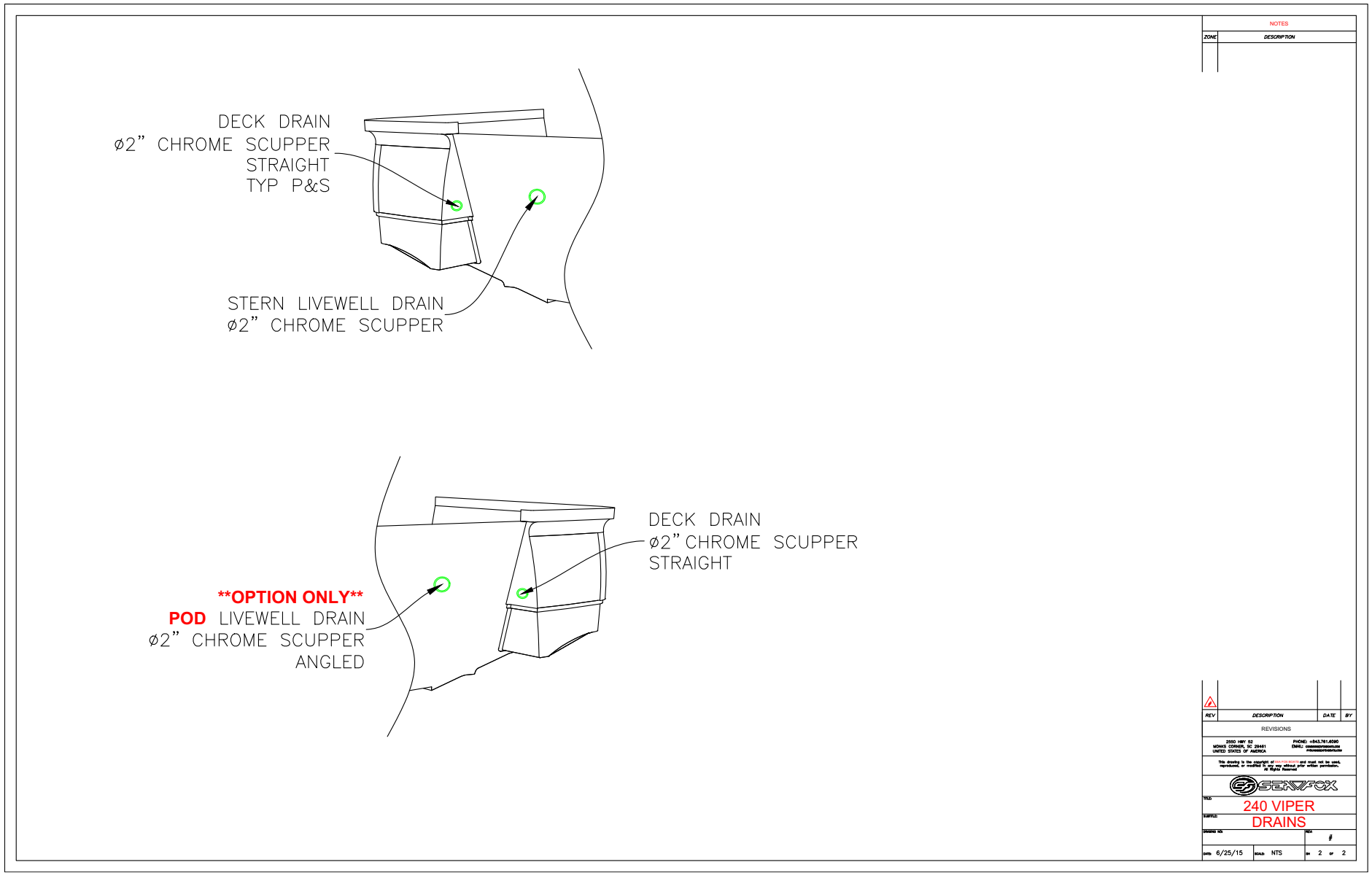


VIPER DRAINS



△	REVISED REAR TUB DRAIN SET UP	11/06/11	PH
△	NEW THRU HULL FITTINGS	3/10/11	PH
REV	DESCRIPTION	DATE	BY
REVISIONS			
3500 HWY 52 LAWRENCEVILLE, GA 30041 UNITED STATES OF AMERICA		PHONE: +663.761.6000 FAX: +663.761.6000 WWW.SEAFOX.COM	
THIS DRAWING IS THE PROPERTY OF SEA FOX BOATS. IT IS TO BE USED ONLY FOR THE SPECIFIC BOAT AND EQUIPMENT FOR WHICH IT WAS DESIGNED. ANY OTHER USE IS STRICTLY PROHIBITED.			
240 VIPER DRAINS			
DATE:	REV:	B	
REV: 6/25/15	SCALE: NTS	OF 1 OF 2	

VIPER DRAINS (CONTINUED)



NOTES	
ZONE	DESCRIPTION

REV	DESCRIPTION	DATE	BY

REVISIONS

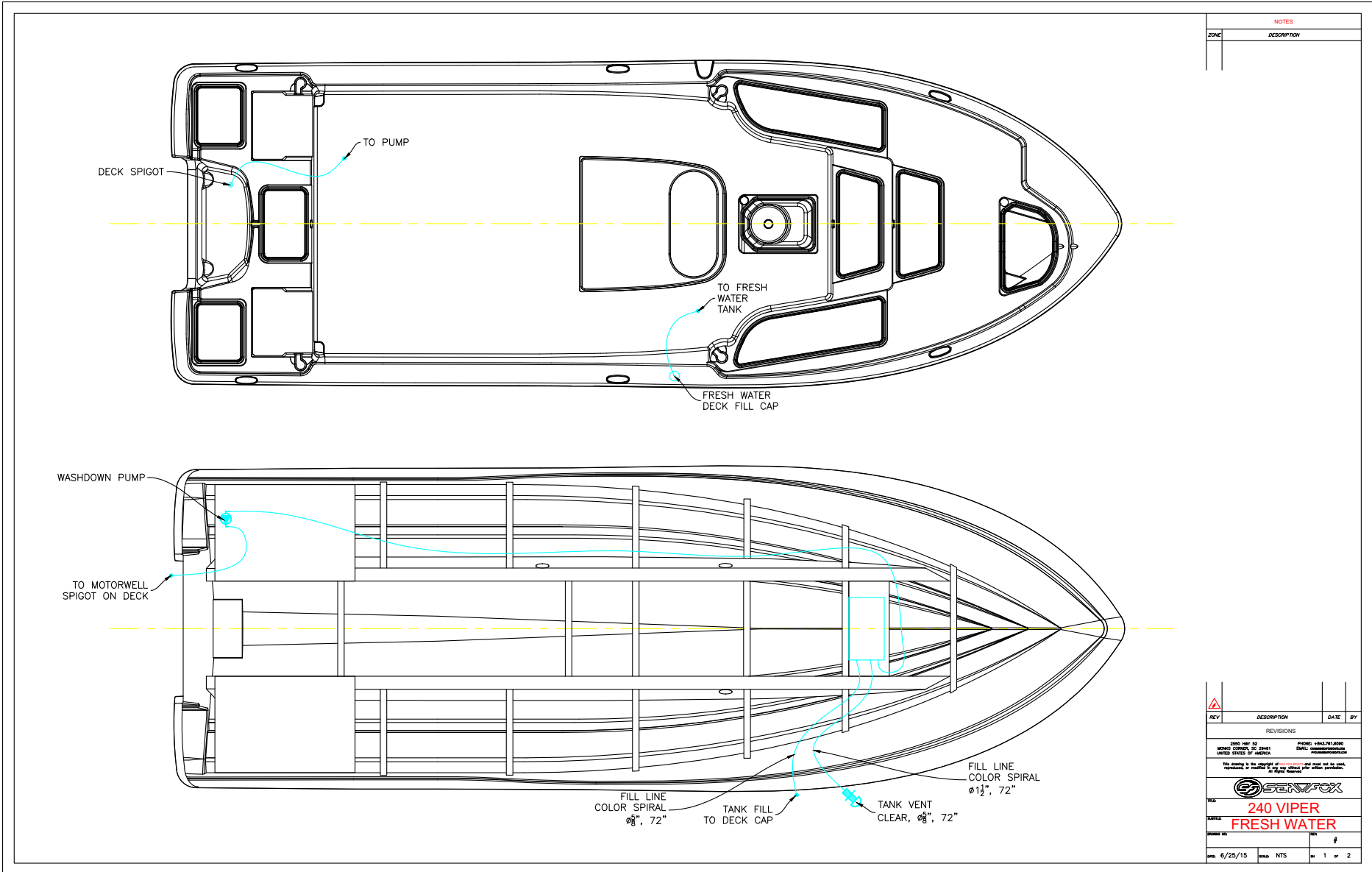
THIS COPY IS UNLESS OTHERWISE SPECIFIED IN THE DRAWING AND SHALL BE USED IN ACCORDANCE WITH THE REVISIONS.

THIS DRAWING IS THE PROPERTY OF SEAFOX BOATS AND SHALL NOT BE REPRODUCED OR TRANSMITTED IN ANY FORM OR BY ANY MEANS, ELECTRONIC OR MECHANICAL, INCLUDING PHOTOCOPYING, RECORDING, OR BY ANY INFORMATION STORAGE AND RETRIEVAL SYSTEM, WITHOUT THE WRITTEN PERMISSION OF SEAFOX BOATS.

240 VIPER DRAINS

DATE: 6/25/15 SCALE: NTS SHEET: 2 OF 2

VIPER FRESH WATER SYSTEM



NOTES	
ZONE	DESCRIPTION

REV	DESCRIPTION	DATE	BY

REVISIONS

2000 HWY 52 PHONE: +843.761.6800
 MONROE CORP., SC 29041 EMAIL: customerservice@seafox.com
 UNITED STATES OF AMERICA

This drawing is the property of SeaFox and must not be used, reproduced or modified in any way without prior written permission. All Rights Reserved.

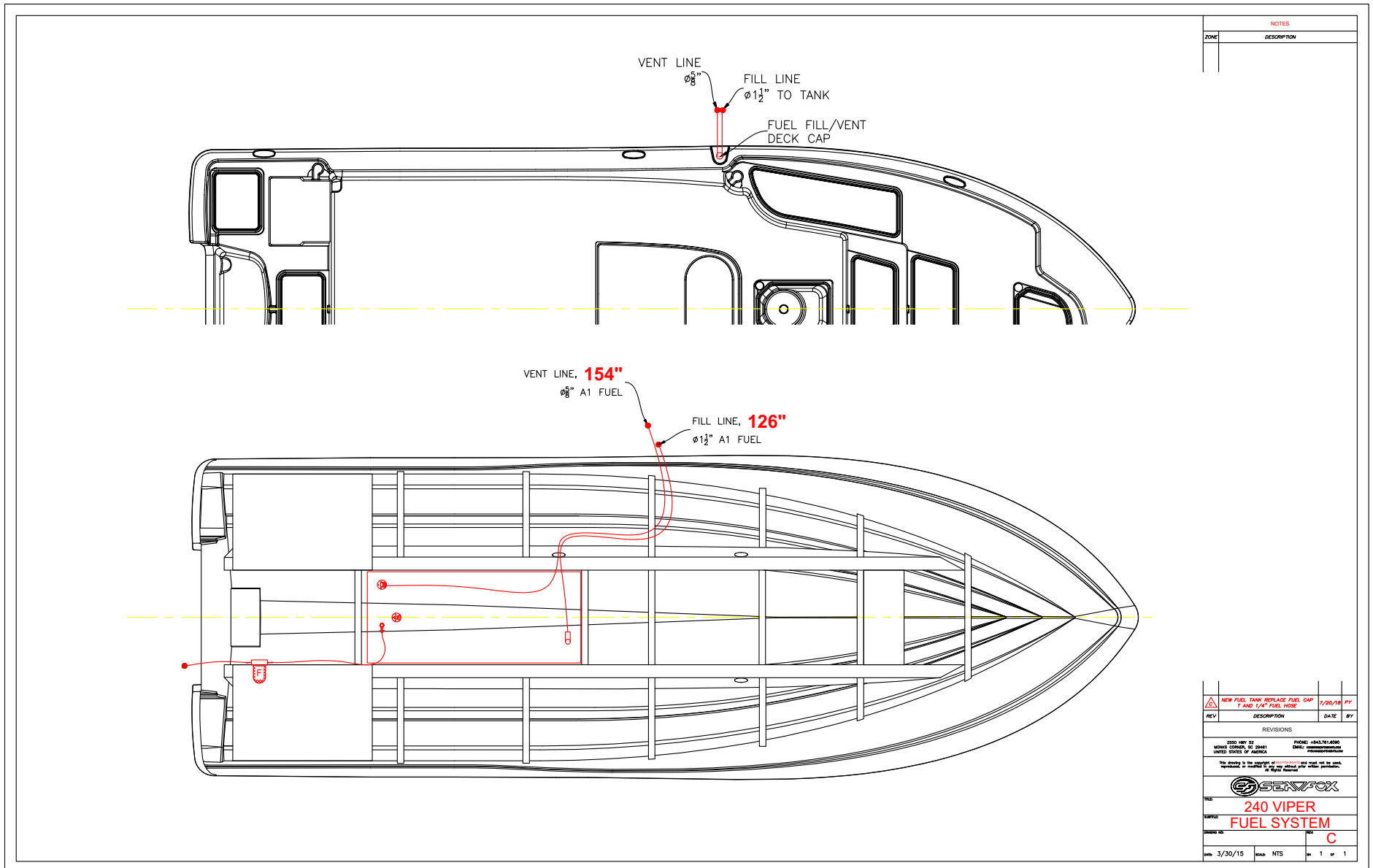
TITLE: **240 VIPER FRESH WATER**

DATE: 6/25/15

SCALE: INTS

PAGE: 1 of 2

VIPER FUEL SYSTEM



NOTES	
ZONE	DESCRIPTION

REV	DESCRIPTION	DATE	BY

REVISIONS

THIS COPY IS UNLESS OTHERWISE SPECIFIED
 UNITED STATES OF AMERICA

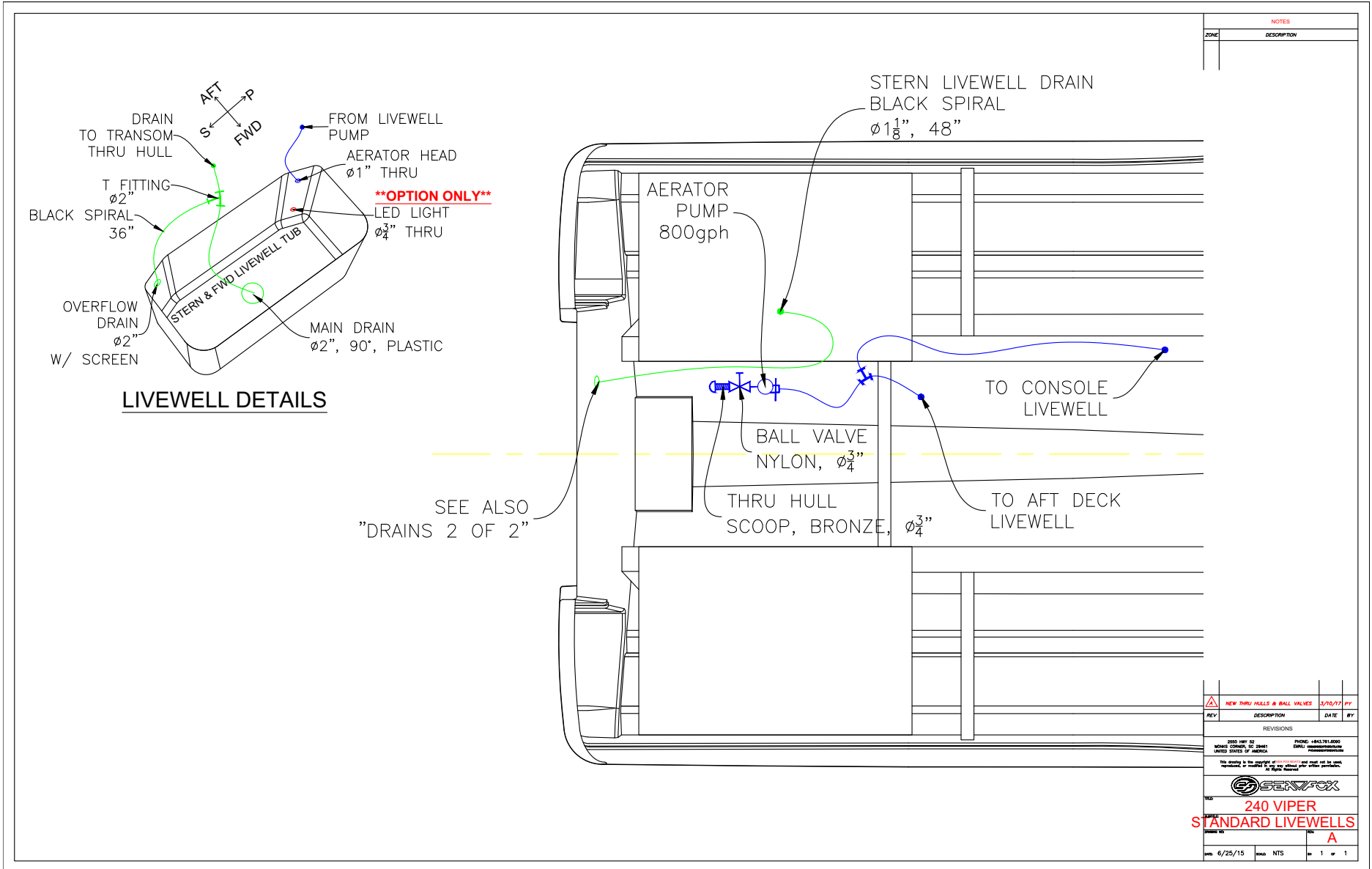
PART NO. 0441791-0000
 DIMS. (DIMENSIONS) IN INCHES (MILLIMETERS)

THE QUALITY OF THIS PRODUCT IS THE RESPONSIBILITY OF THE MANUFACTURER AND NOT SEA FOX. SEA FOX IS NOT RESPONSIBLE FOR ANY DEFECTS OR OTHER PROBLEMS.

240 VIPER FUEL SYSTEM

DATE: 3/30/15 DRAWN: NTS SHEET: 1 OF 1

VIPER STANDARD LIVEWELL SYSTEM



NOTES	
ZONE	DESCRIPTION

REV	DESCRIPTION	DATE	BY

REVISIONS

1500 HWY 52 PHONE: 404.761.6000
 10005 CORNER, P.O. BOX 1 EMAIL: info@seafox.com
 UNITED STATES OF AMERICA

This drawing is the property of SeaFox and must not be used, reproduced, or modified in any way without prior written permission. All rights reserved.

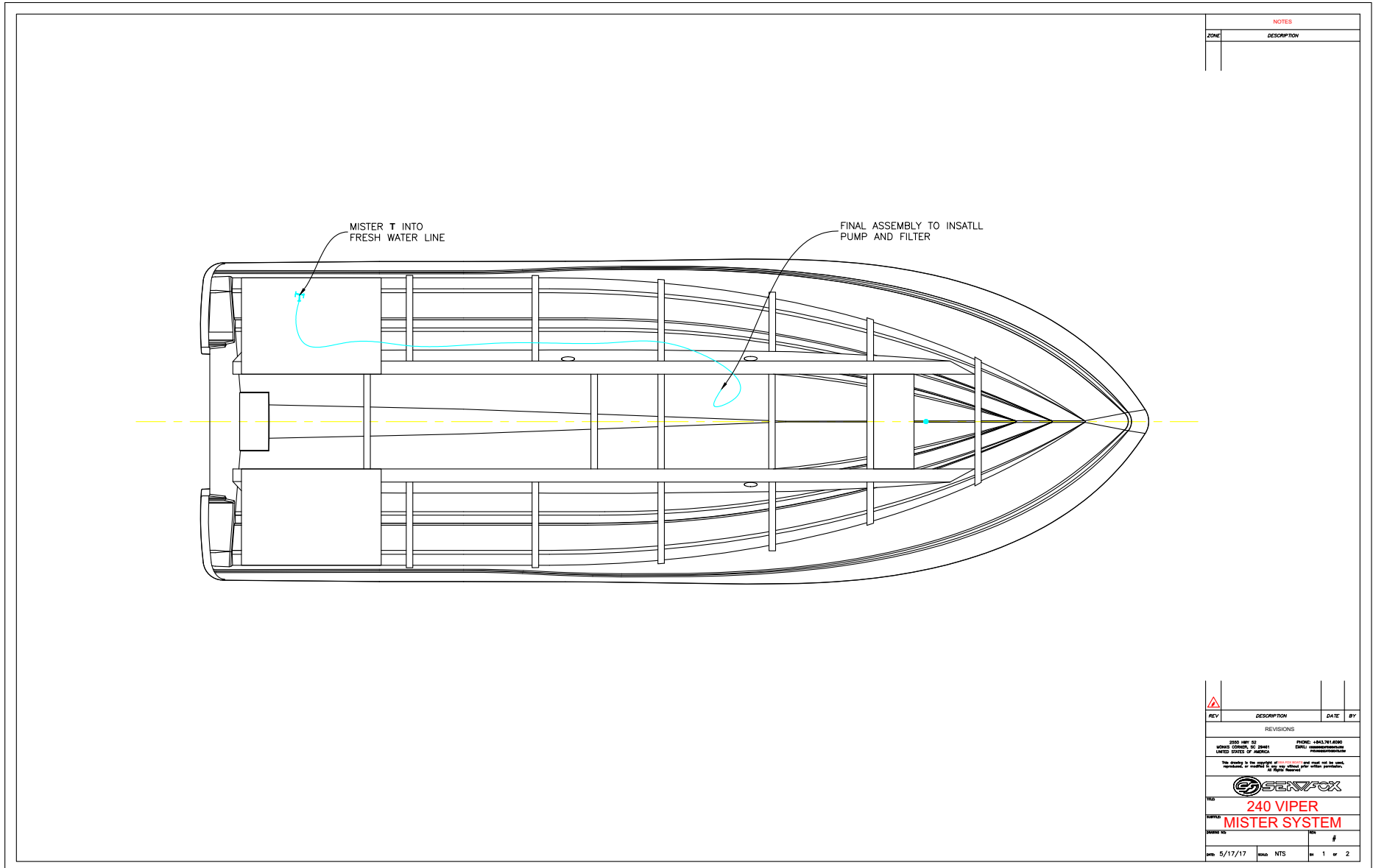
SEAFOX

240 VIPER STANDARD LIVEWELLS

A

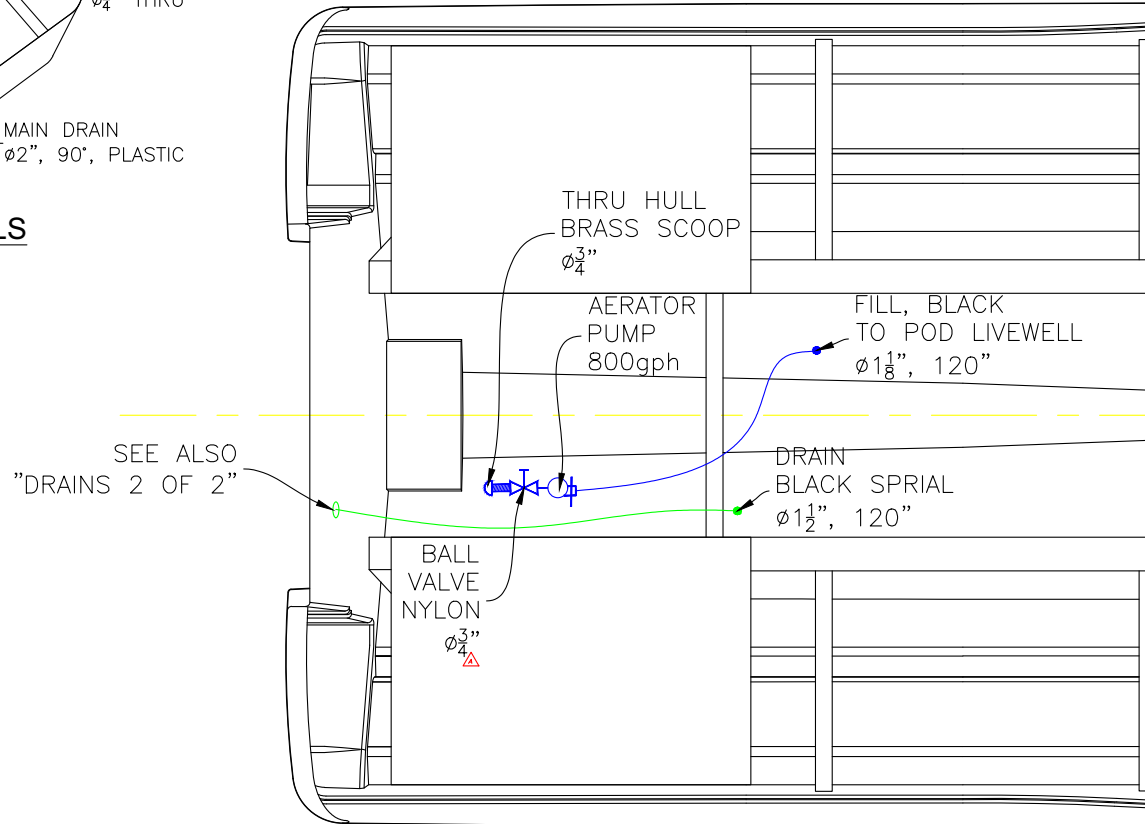
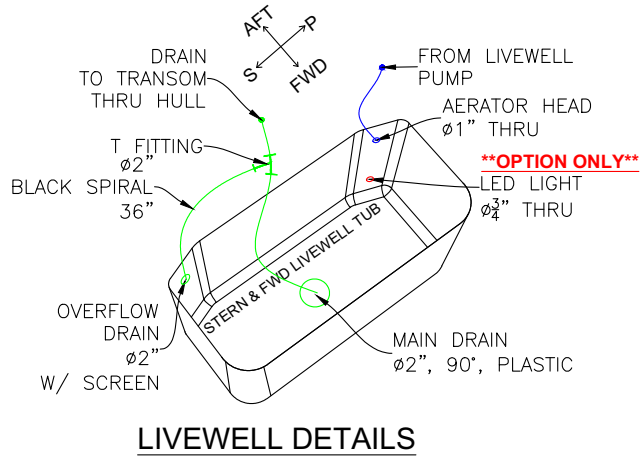
DATE: 6/25/15 SCALE: NTS SHEET: 1 OF 1

VIPER MISTER SYSTEM



VIPER POD LIVEWELL SYSTEM

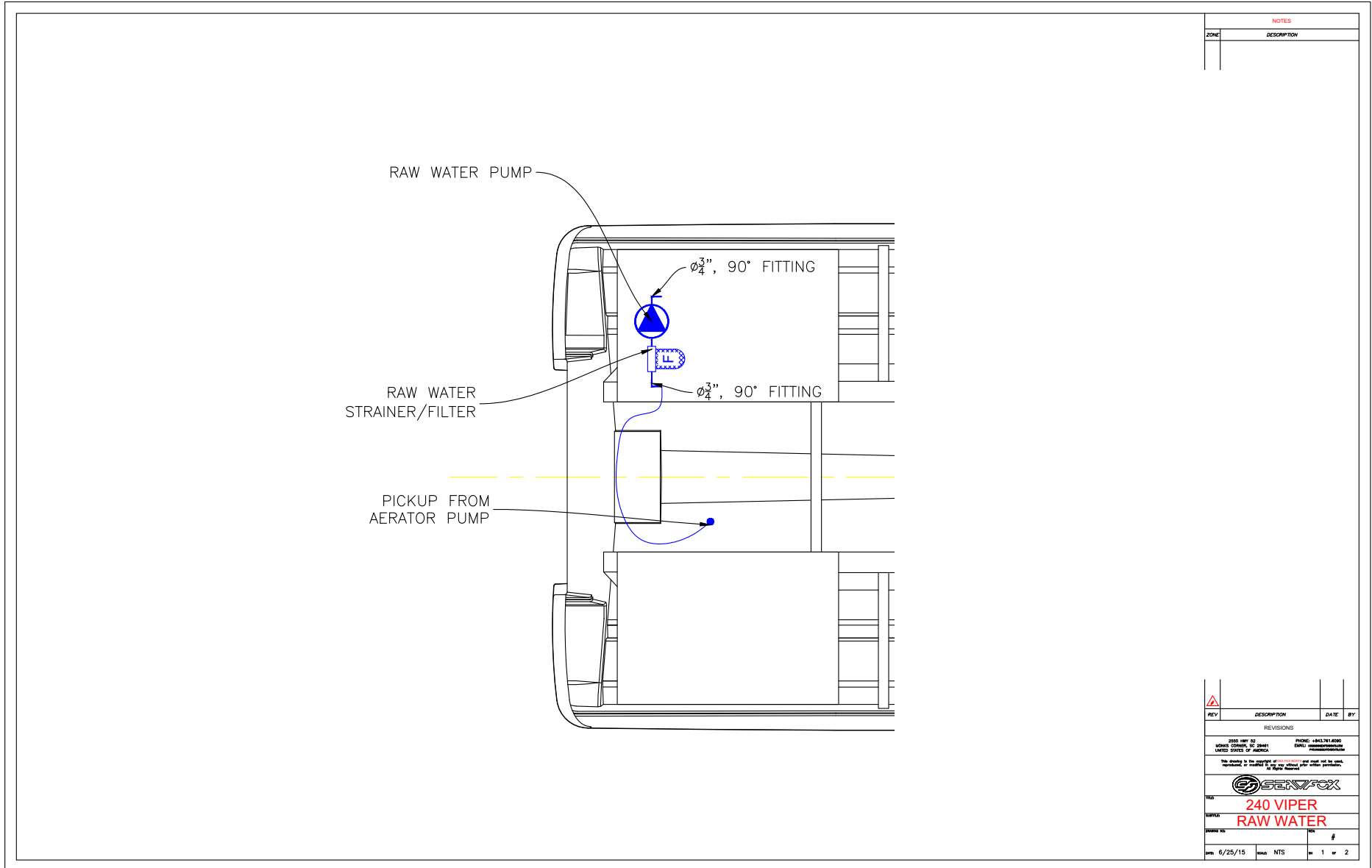
****OPTION ONLY****



NOTES	
ZONE	DESCRIPTION

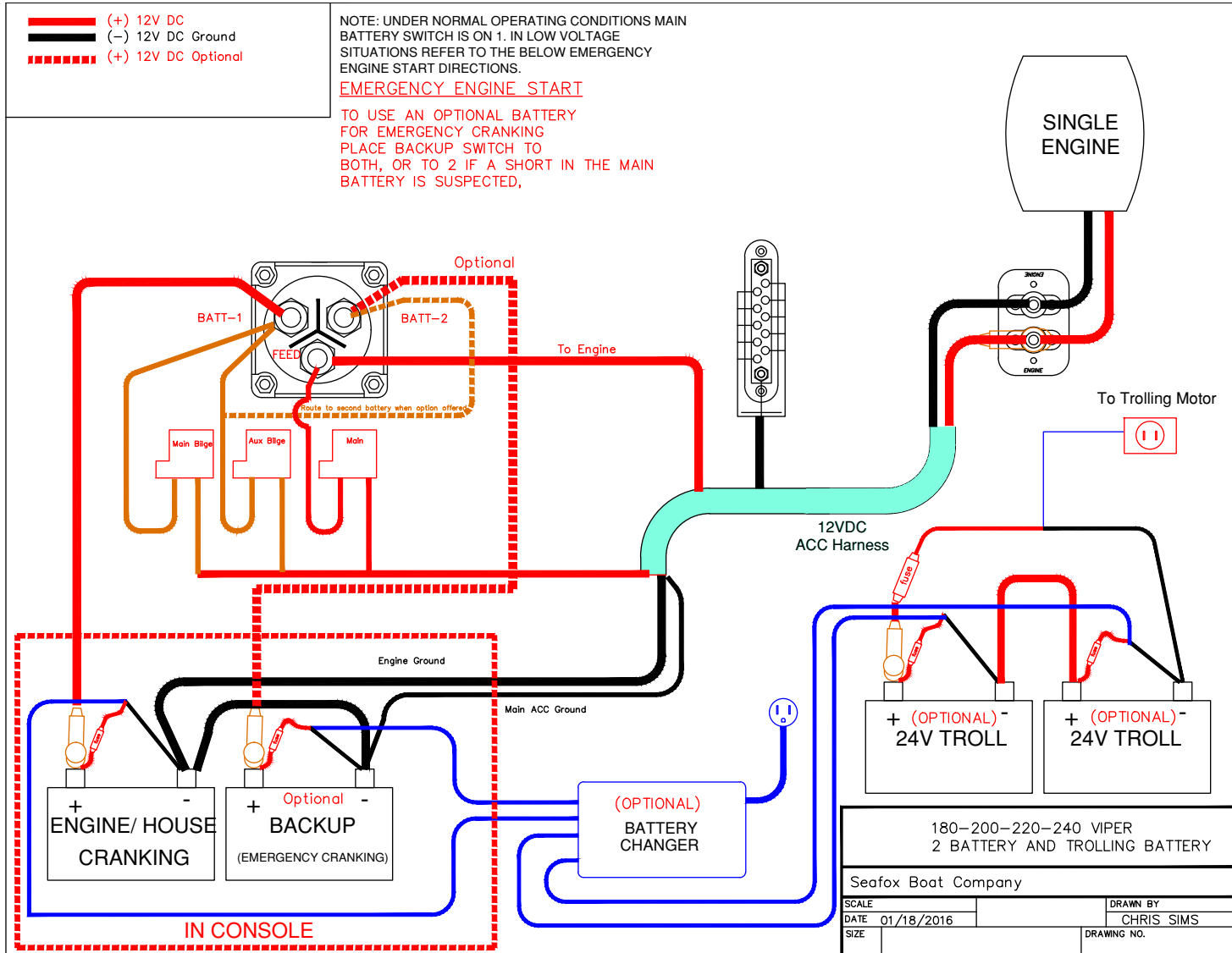
△	NEW THRU HULL & BALL VALVES	3/10/17	PK
REV	DESCRIPTION	DATE	BY
REVISIONS			
3500 HWY 52 LIVENS COAST, FL 32661 UNITED STATES OF AMERICA		PHONE: +843.761.6000 EMAIL: info@seafox.com WWW: www.seafox.com	
This drawing is the property of SeaFox Boats. It may not be used, reproduced, or modified in any way without the written consent of SeaFox Boats.			
240 VIPER POD LIVEWELL			
DRAWN BY		REV	
6/25/15		A	
DATE	SCALE	SHEET	TOTAL
6/25/15	NTS	2	2

VIPER RAW WATER SYSTEM

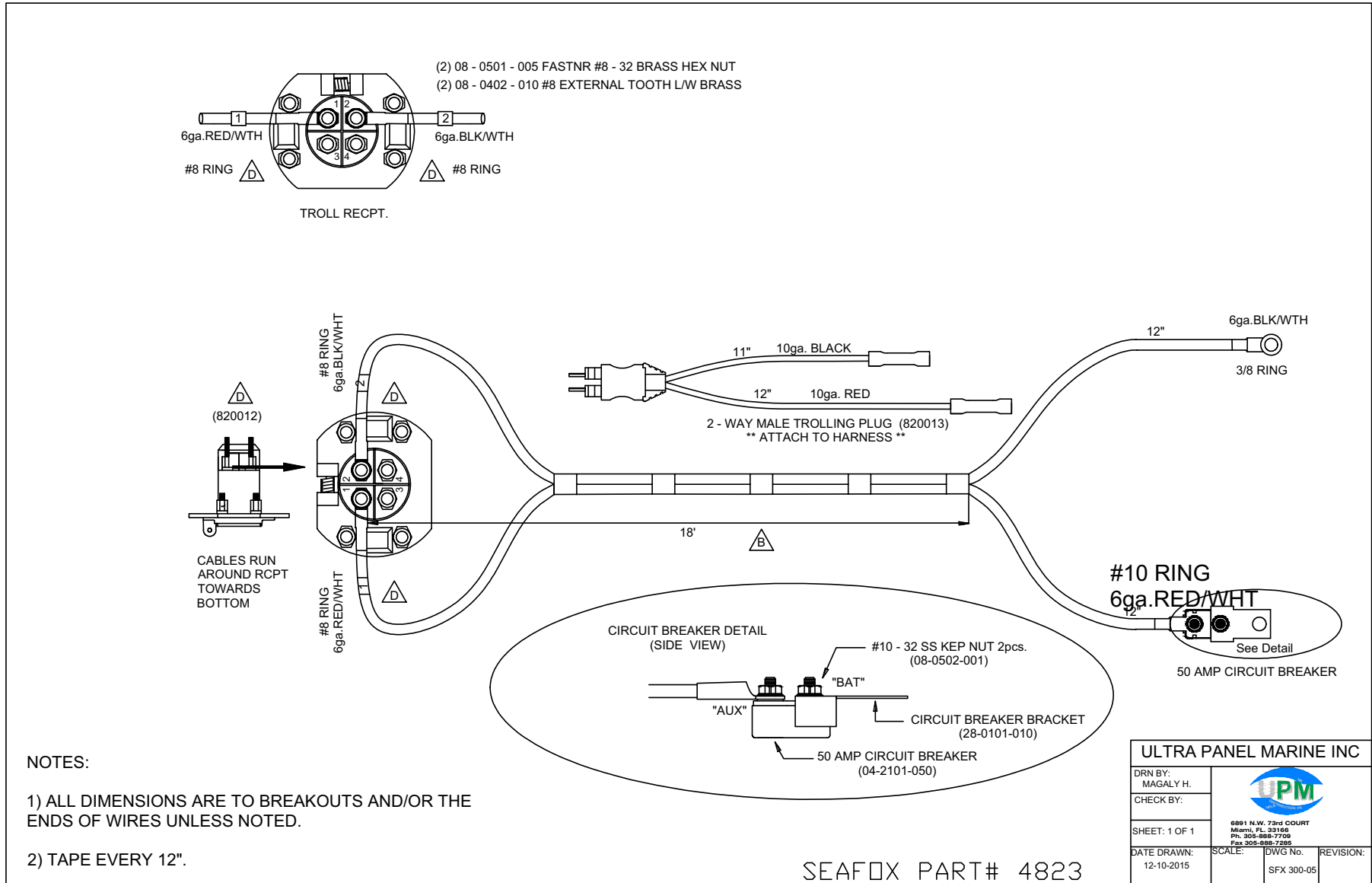


ELECTRICAL SCHEMATICS

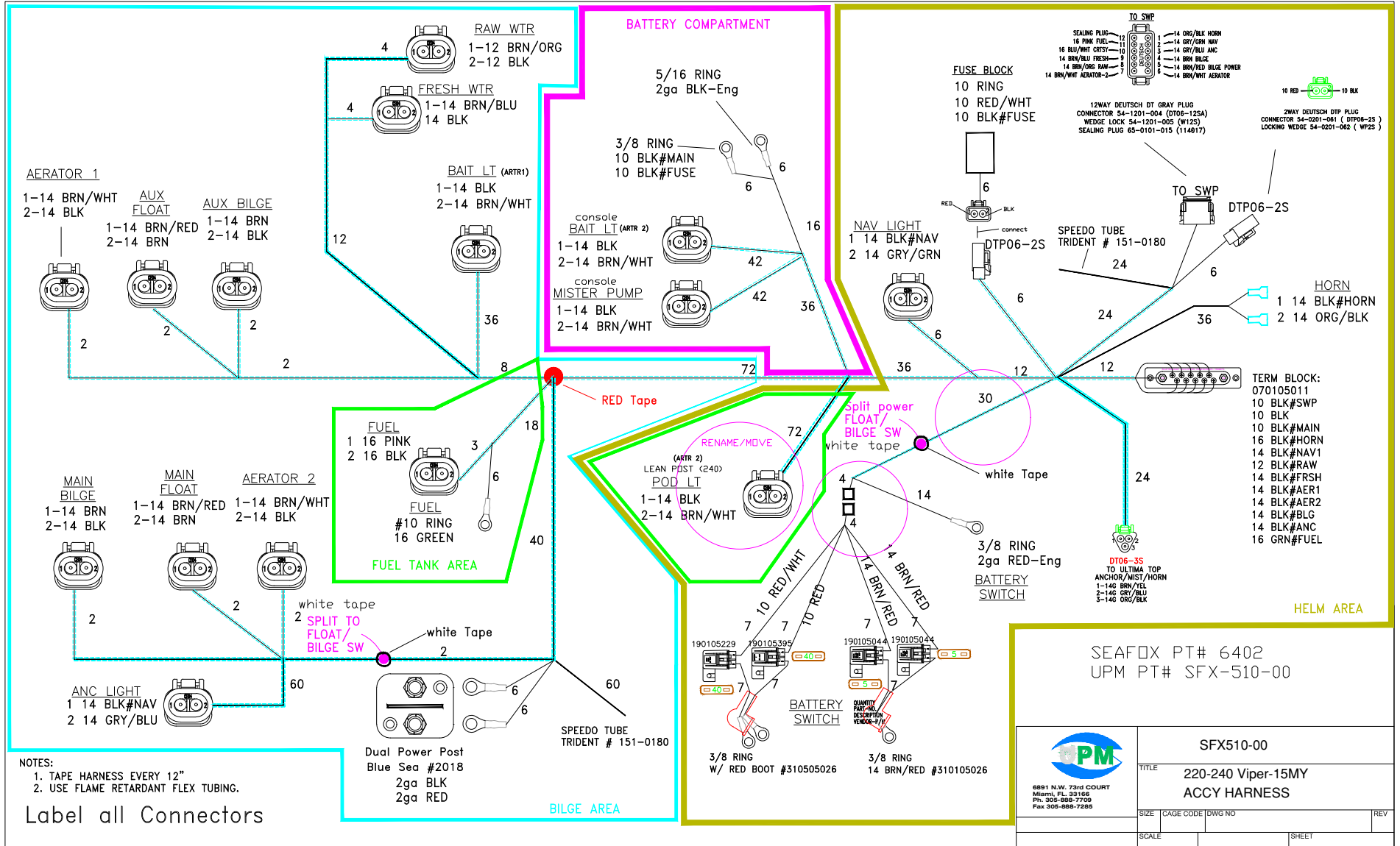
TYPICAL 2-BATTERY SETUP IN CONSOLE



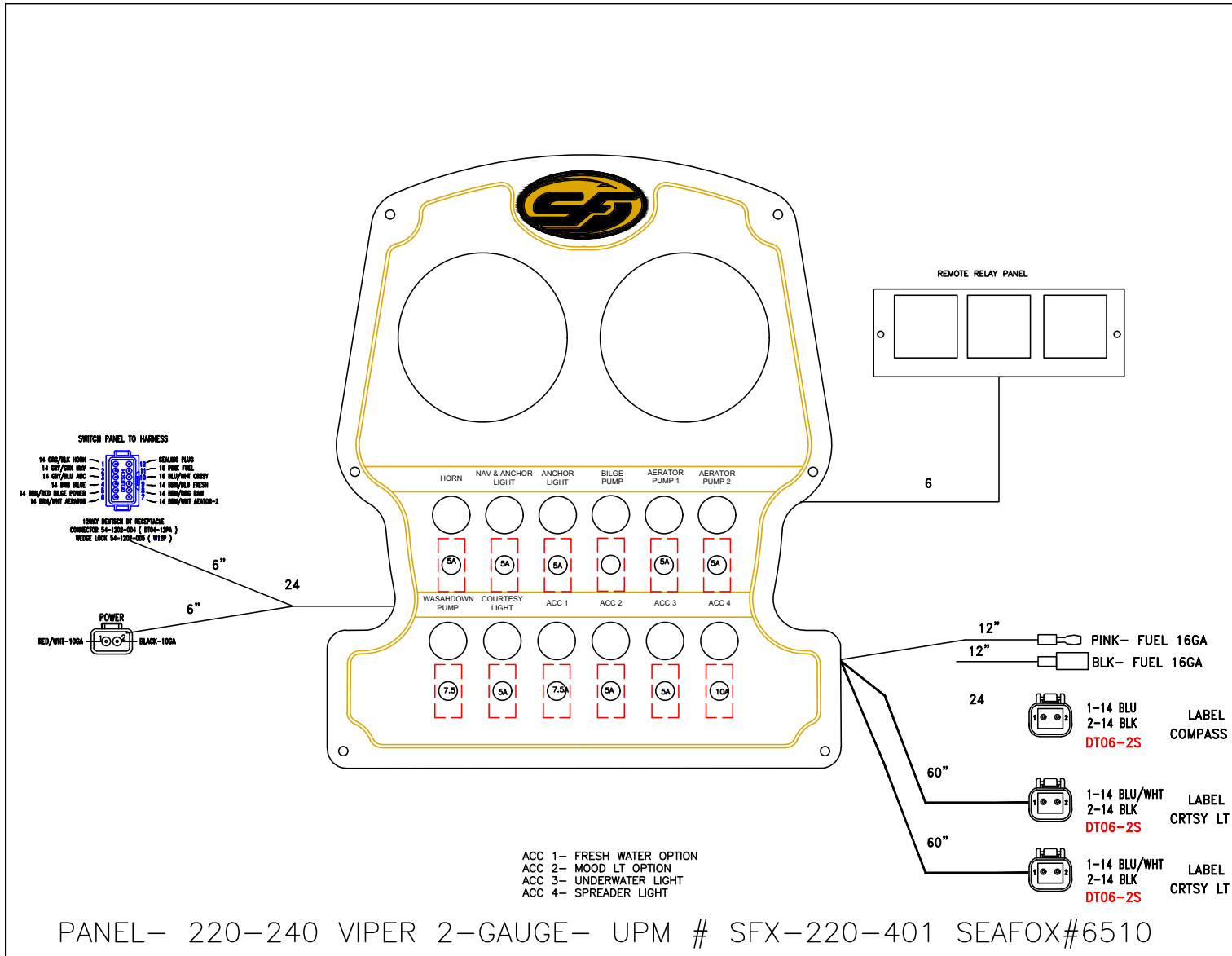
HARNESS TROLLING MOTOR 180-240 (P/N 4823)



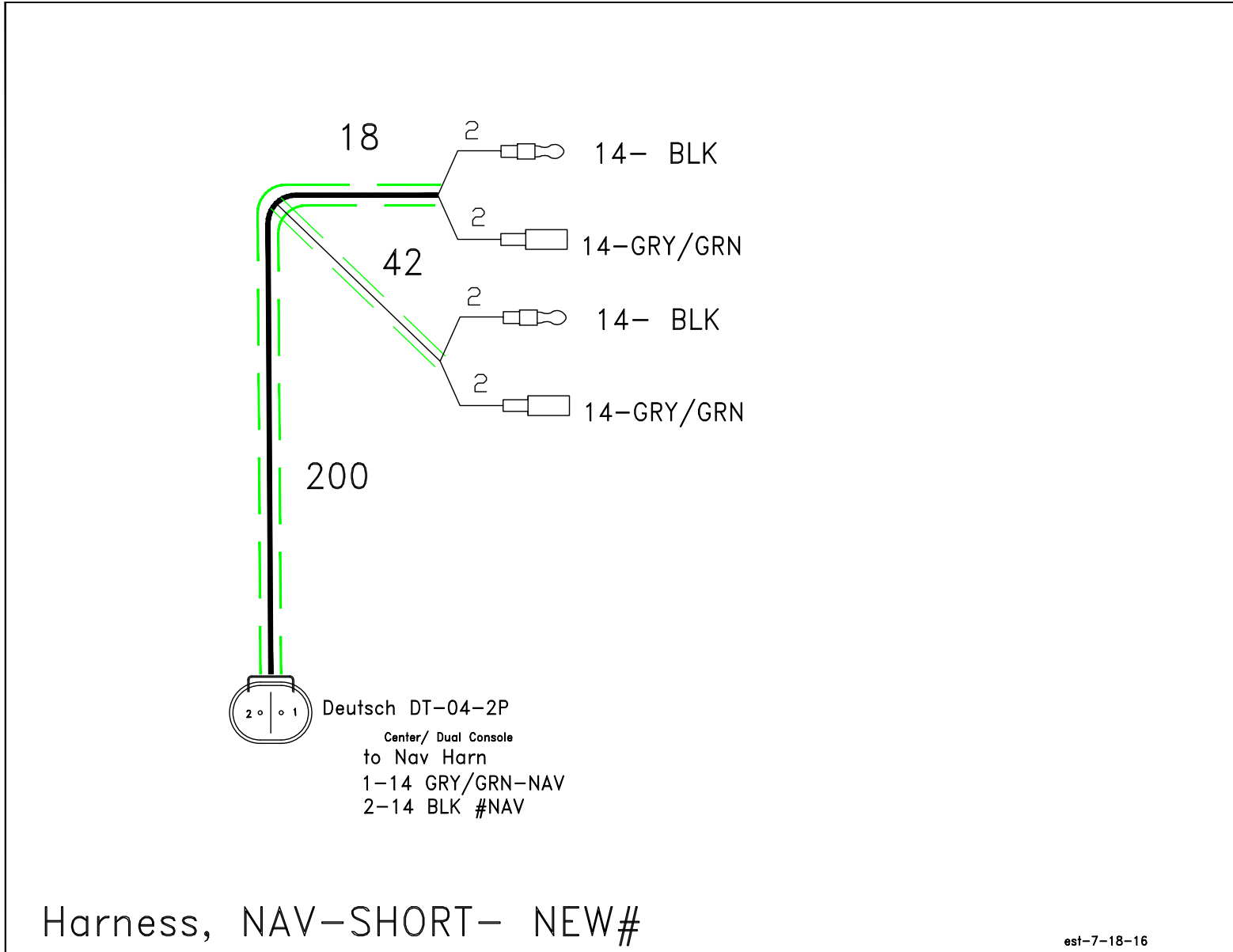
HARNES ACC W/DEUTSCH (P/N 6402)



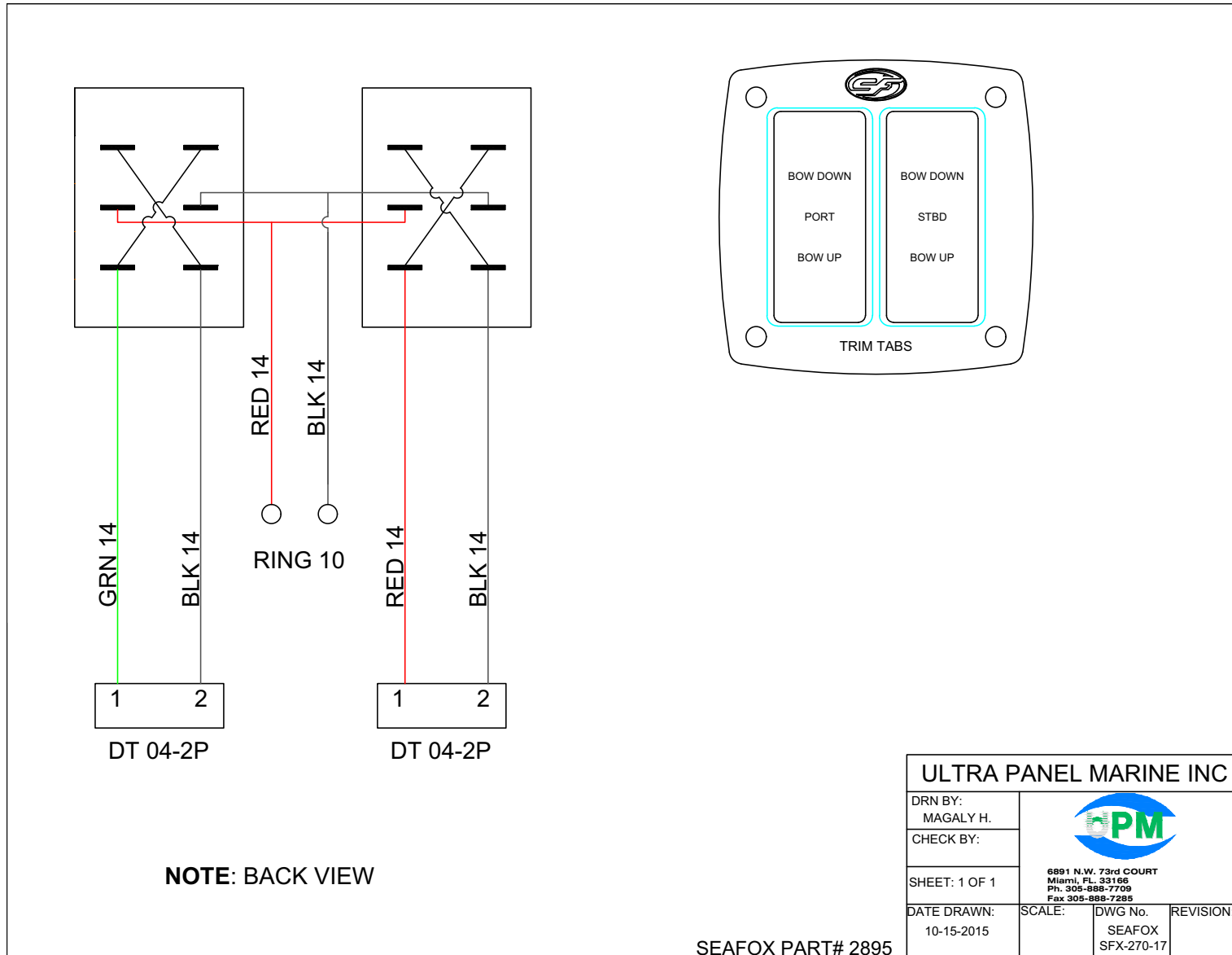
PANEL SWITCH SHROUD (P/N 6510)



HARNES NAV SHORT

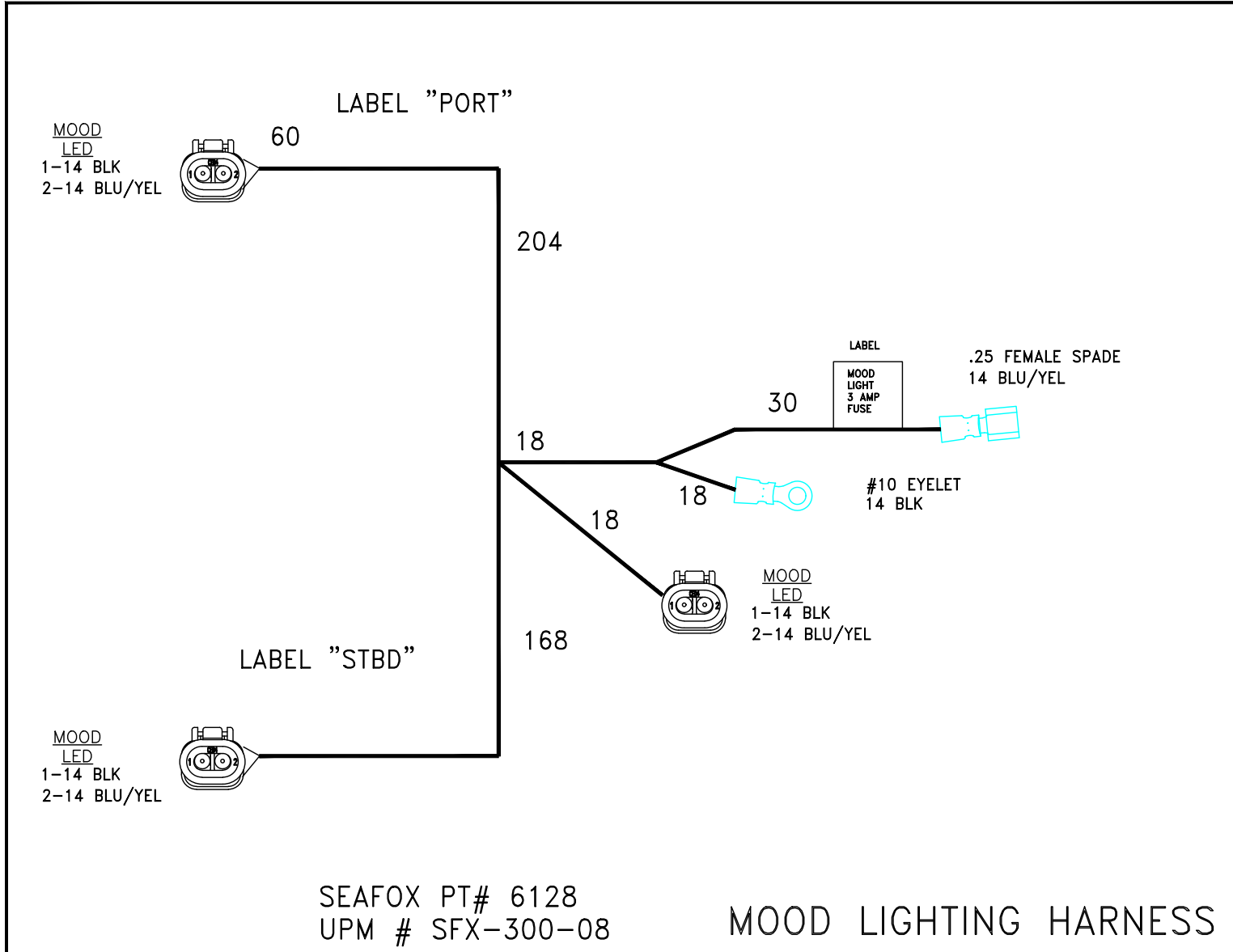


TRIMTABS ELECTRICAL SWITCH STANDARD (P/N 2895) – OPTIONAL



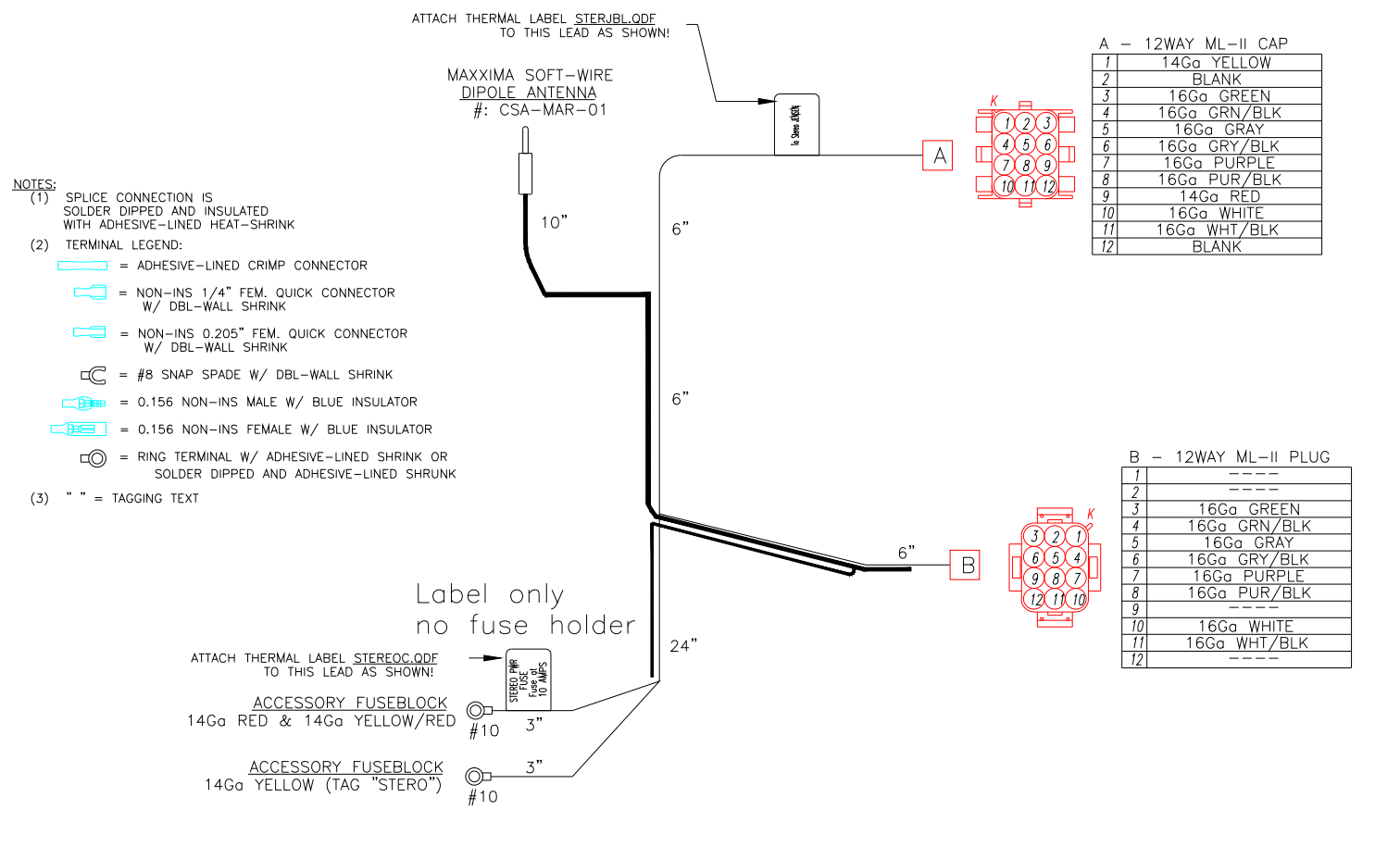


HARNESS MOOD LIGHT W/DEUTSCH (P/N 6128) – OPTIONAL



HARNES STEREO INFINITY CON (P/N 6129) – OPTIONAL

CUSTOMER SEAFOX BOAT CO. W/O # _____
 PART # 6129 UPM# SFX-300-09 DUE DATE _____
 FILENAME _____ MODEL ALL MODELS
 DESCRIPTION HARNES STEREO INFINITY/JENSEN






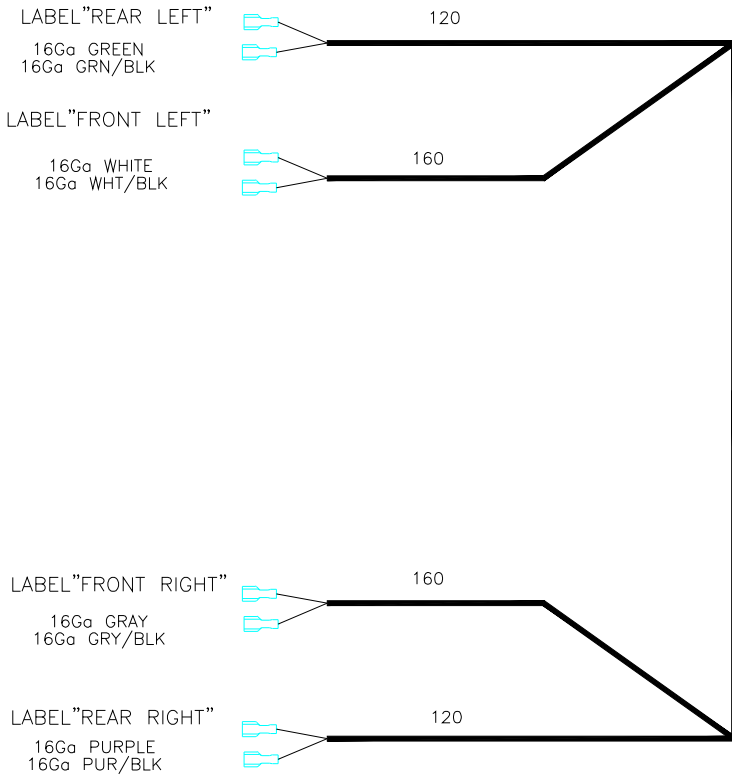
HARNES STEREO INFINITY DECK (P/N 6130) – OPTIONAL

CUSTOMER SEAFOX BOAT CO.
 PART # 6130 UPM# SFX-300-04
 FILENAME _____

W/O # _____
 DUE DATE _____
 MODEL ALL MODELS
 DESCRIPTION HARNES DECK INFINITY STEREO

NOTES:

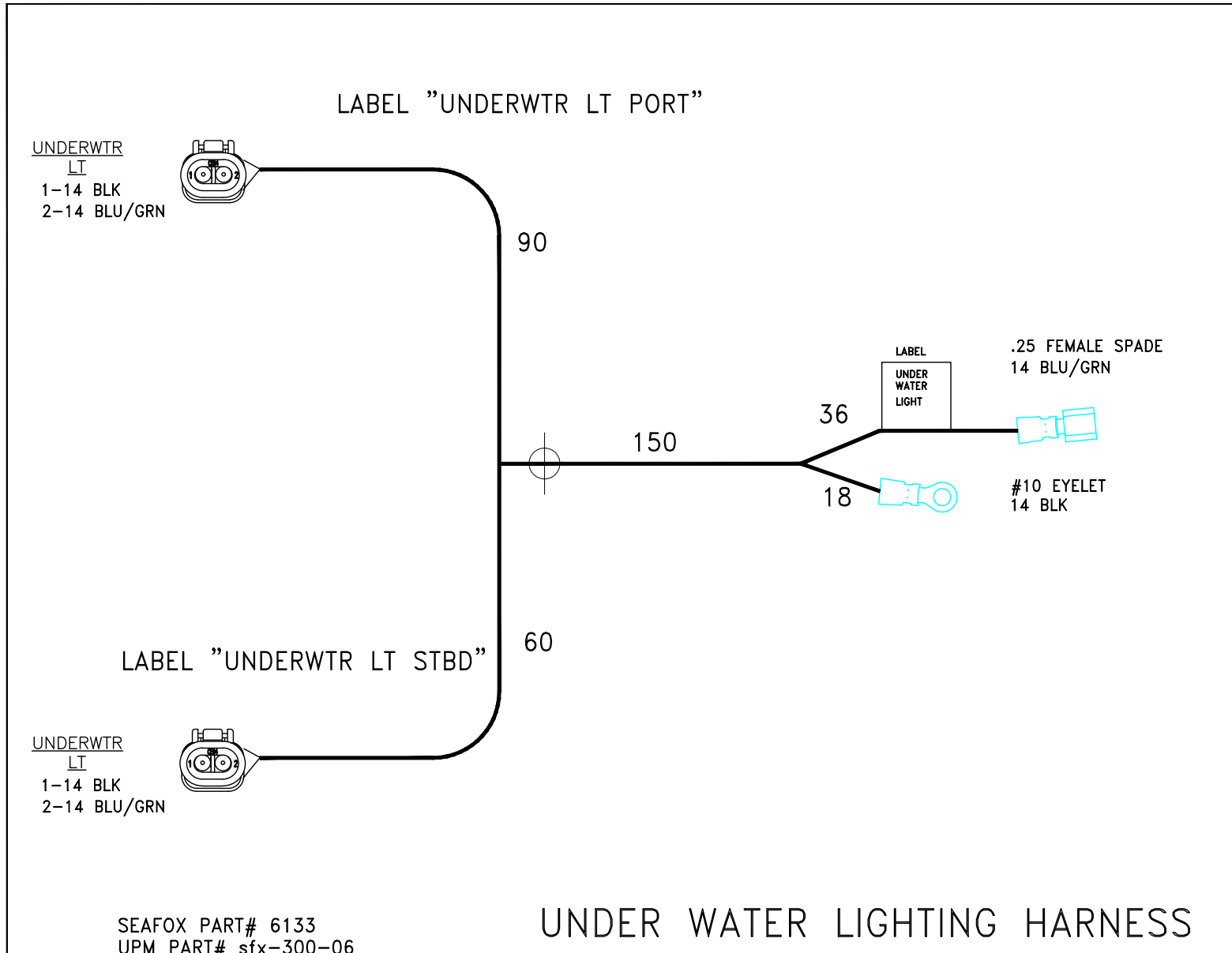
 = NON-INS 1/4" FEM. QUICK CONNECTOR
 W/ DBL-WALL SHRINK



B - 12WAY ML-II PLUG

1	----
2	----
3	16Ga GREEN
4	16Ga GRN/BLK
5	16Ga GRAY
6	16Ga GRY/BLK
7	16Ga PURPLE
8	16Ga PUR/BLK
9	----
10	16Ga WHITE
11	16Ga WHT/BLK
12	----

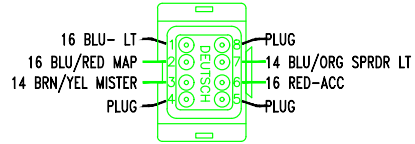
HARNES UNDERWATER LIGHT W/DEUTSCH (P/N 6133) – OPTIONAL



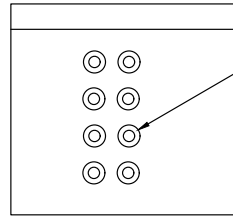
U PANEL SWITCH ULTIMA (P/N 6463) – OPTIONAL

SEAFOX PT# 6463
UPM PT# SFX-600-40

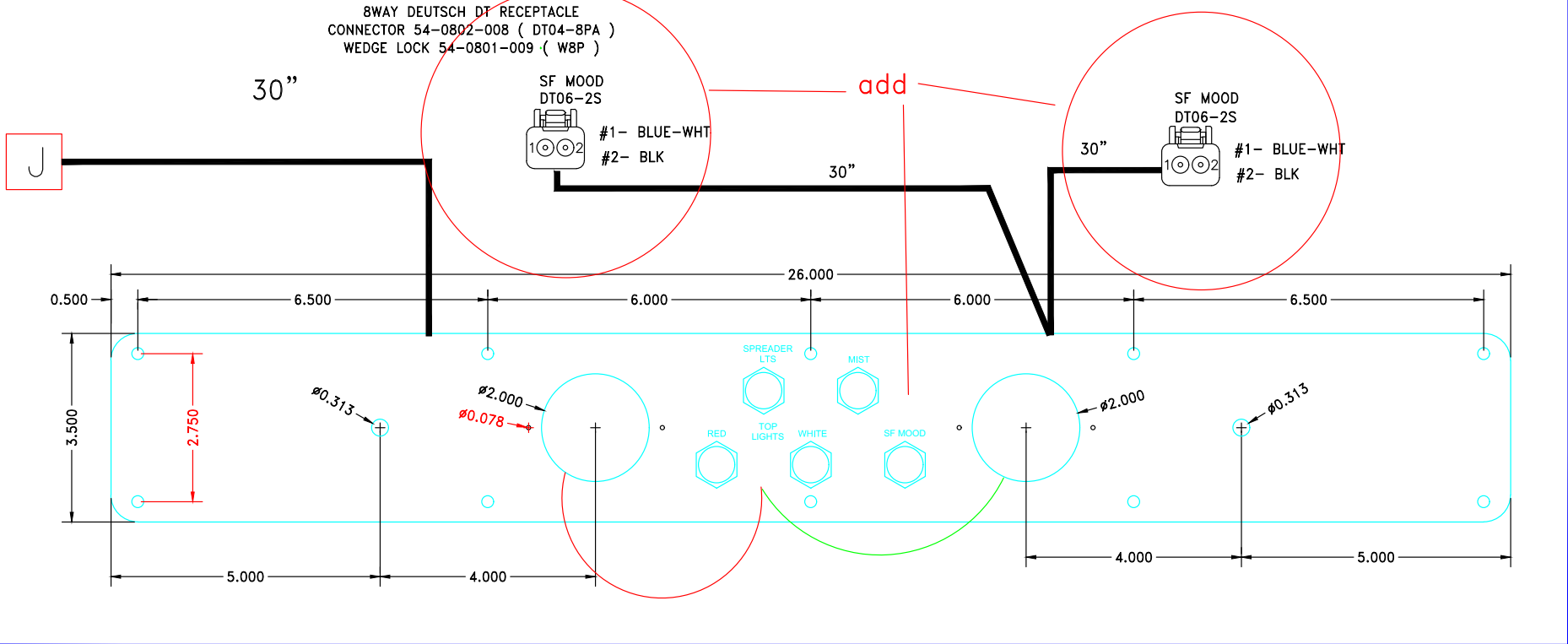
3 OF 3



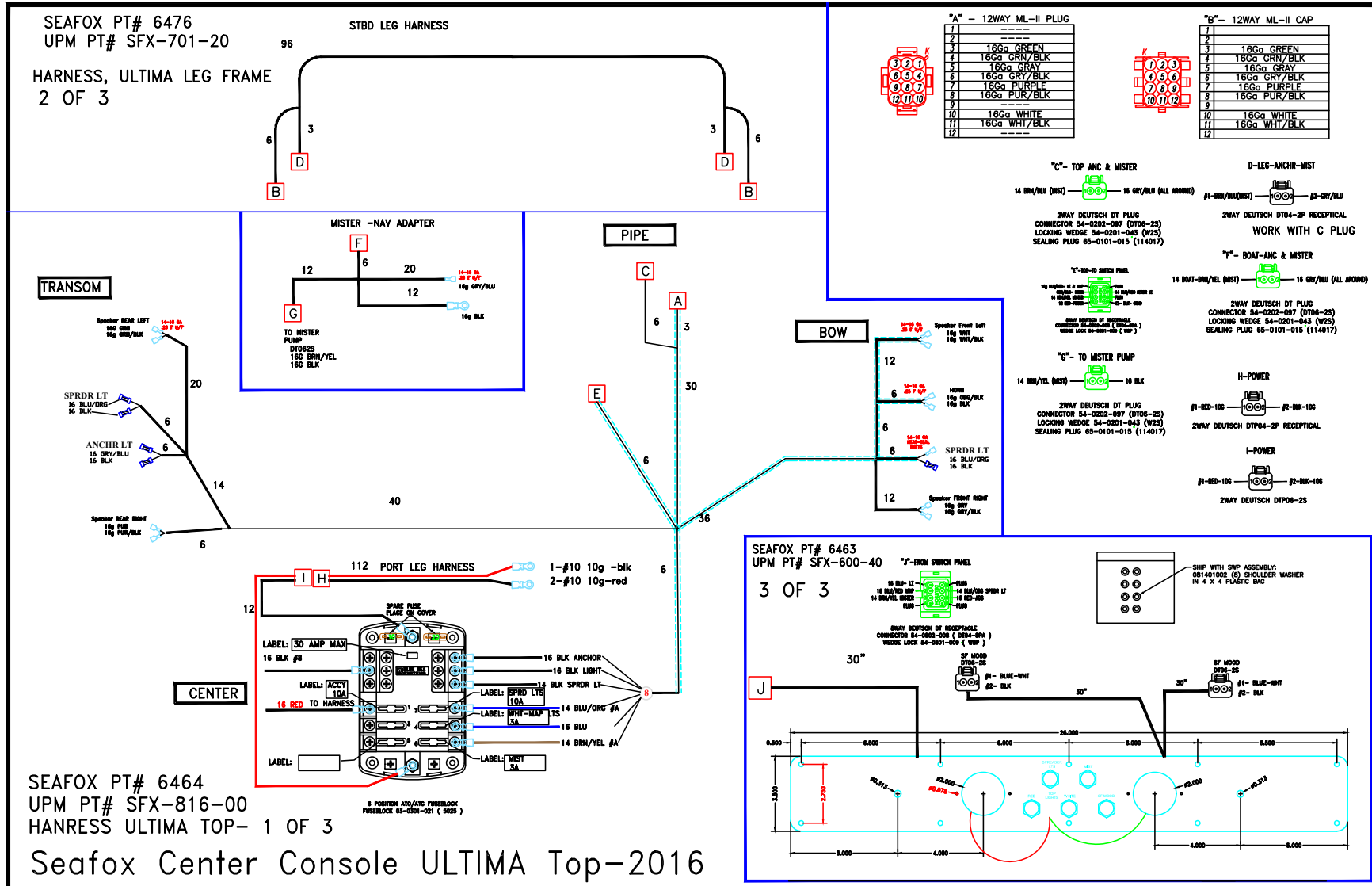
8WAY DEUTSCH DT RECEPTACLE
CONNECTOR 54-0802-008 (DT04-8PA)
WEDGE LOCK 54-0801-009 (W8P)



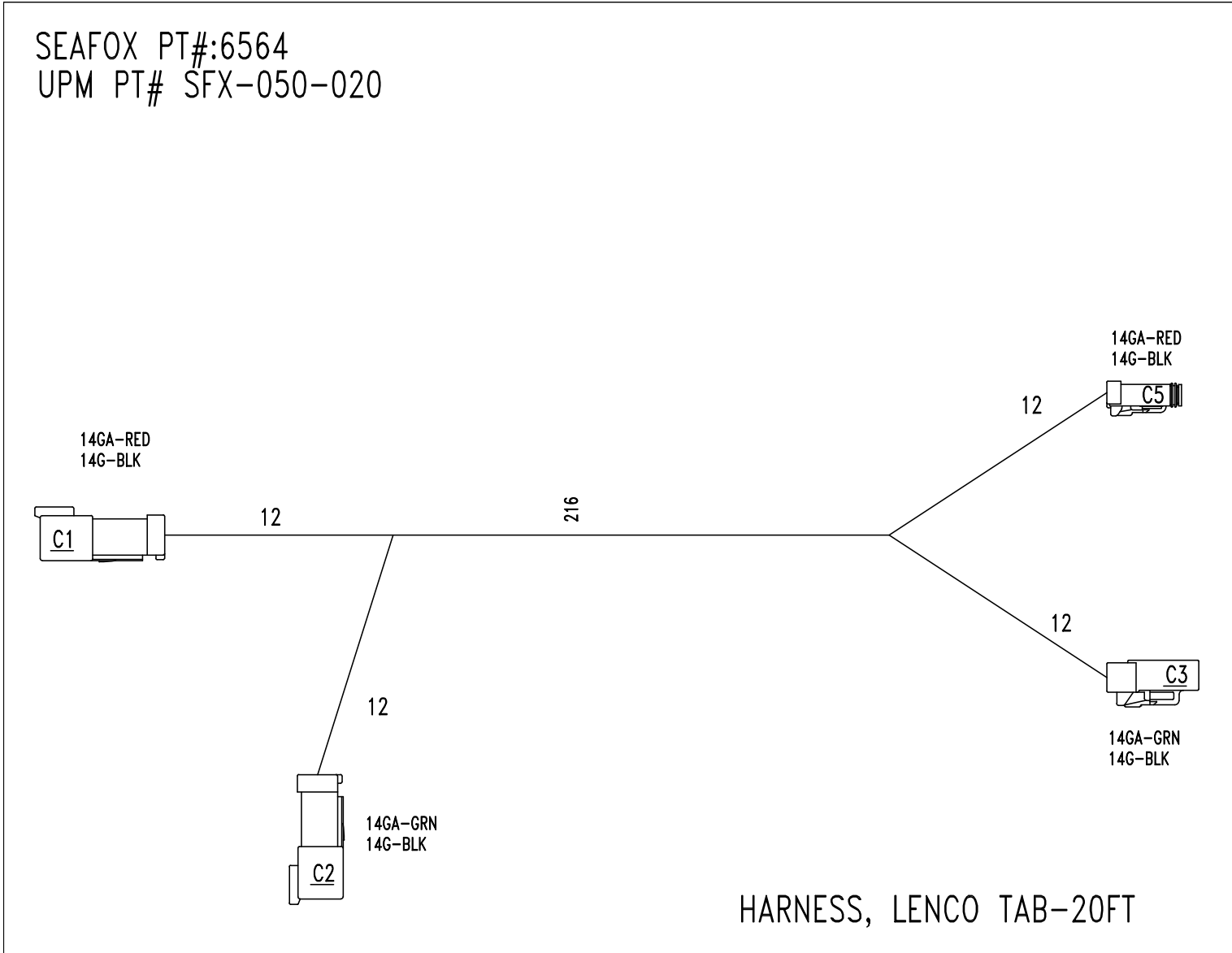
SHIP WITH SWP ASSEMBLY:
081401002 (8) SHOULDER WASHER
IN 4 X 4 PLASTIC BAG



CENTER CONSOLE ULTIMA TOP – 2016 (P/N 6463, 6464 AND 6476) – OPTIONAL



HARNES TRIMTAB ELECTRIC 20 FT Lenco (P/N 6564) – OPTIONAL



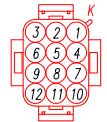
HARNES STEREO KICKER CON 2016 (P/N 6851) – OPTIONAL

NOTES:

- (1) SPLICE CONNECTION IS SOLDER DIPPED AND INSULATED WITH ADHESIVE-LINED HEAT-SHRINK
- (2) TERMINAL LEGEND:
 - = ADHESIVE-LINED CRIMP CONNECTOR
 - = NON-INS 1/4" FEM. QUICK CONNECTOR W/ DBL-WALL SHRINK
 - = NON-INS 0.205" FEM. QUICK CONNECTOR W/ DBL-WALL SHRINK
 - = #8 SNAP SPADE W/ DBL-WALL SHRINK
 - = 0.156 NON-INS MALE W/ BLUE INSULATOR
 - = 0.156 NON-INS FEMALE W/ BLUE INSULATOR
 - = RING TERMINAL W/ ADHESIVE-LINED SHRINK OR SOLDER DIPPED AND ADHESIVE-LINED SHRUNK
- (3) " " = TAGGING TEXT

B - 12WAY ML-II PLUG

1	----
2	----
3	16Ga GREEN
4	16Ga GRN/BLK
5	16Ga GRAY
6	16Ga GRY/BLK
7	16Ga PURPLE
8	16Ga PUR/BLK
9	----
10	16Ga WHITE
11	16Ga WHI/BLK
12	----



TO- ULTIMA TOP HARNESS

ATTACH THERMAL LABEL STERJBL.QDF TO THIS LEAD AS SHOWN!

MAXXIMA SOFT-WIRE DIPOLE ANTENNA # : CSA-MAR-01

ATTACH THERMAL LABEL STEREOC.QDF TO THIS LEAD AS SHOWN!

- ACCESSORY FUSEBLOCK 14Ga RED #10 3"
- ACCESSORY FUSEBLOCK 14Ga YELLOW (TAG "STERO") #10 3"

A - 12WAY ML-II CAP

1	14Ga RED
2	16Ga WHI/BLK
3	16Ga WHITE
4	BLANK
5	16Ga GRY/BLK
6	16Ga GRAY
7	BLANK
8	16Ga GRN/BLK
9	16Ga GREEN
10	14Ga BLACK
11	16Ga PUR/BLK
12	16Ga PURPLE

TO- DECK HARNESS

B - 12WAY ML-II PLUG

1	----
2	----
3	16Ga GREEN
4	16Ga GRN/BLK
5	16Ga GRAY
6	16Ga GRY/BLK
7	16Ga PURPLE
8	16Ga PUR/BLK
9	----
10	16Ga WHITE
11	16Ga WHI/BLK
12	----

<p>6891 N.W. 73rd COURT Miami, FL 33166 Ph. 305-888-7709 Fax 305-888-7285</p>	SEA FOX SFX-818-016	
	TITLE KICKER 8-SPEAKER STEREO ADAPTER HARNESS	
SIZE	CAGE CODE	DWG NO
SCALE	SHEET	

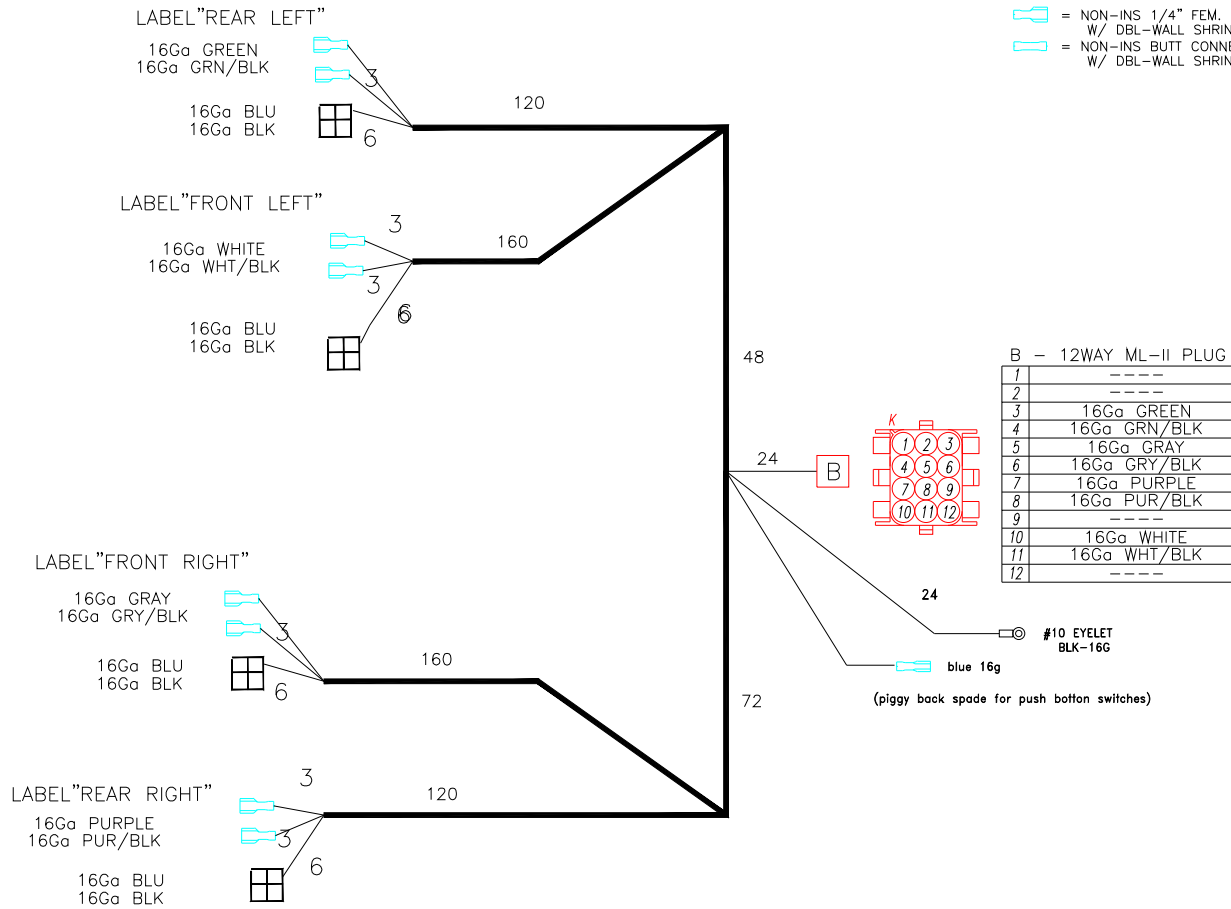
SEAFXQX PT# 6851

HARNES STEREO KICKER DECK 2016 (P/N 6852) – OPTIONAL

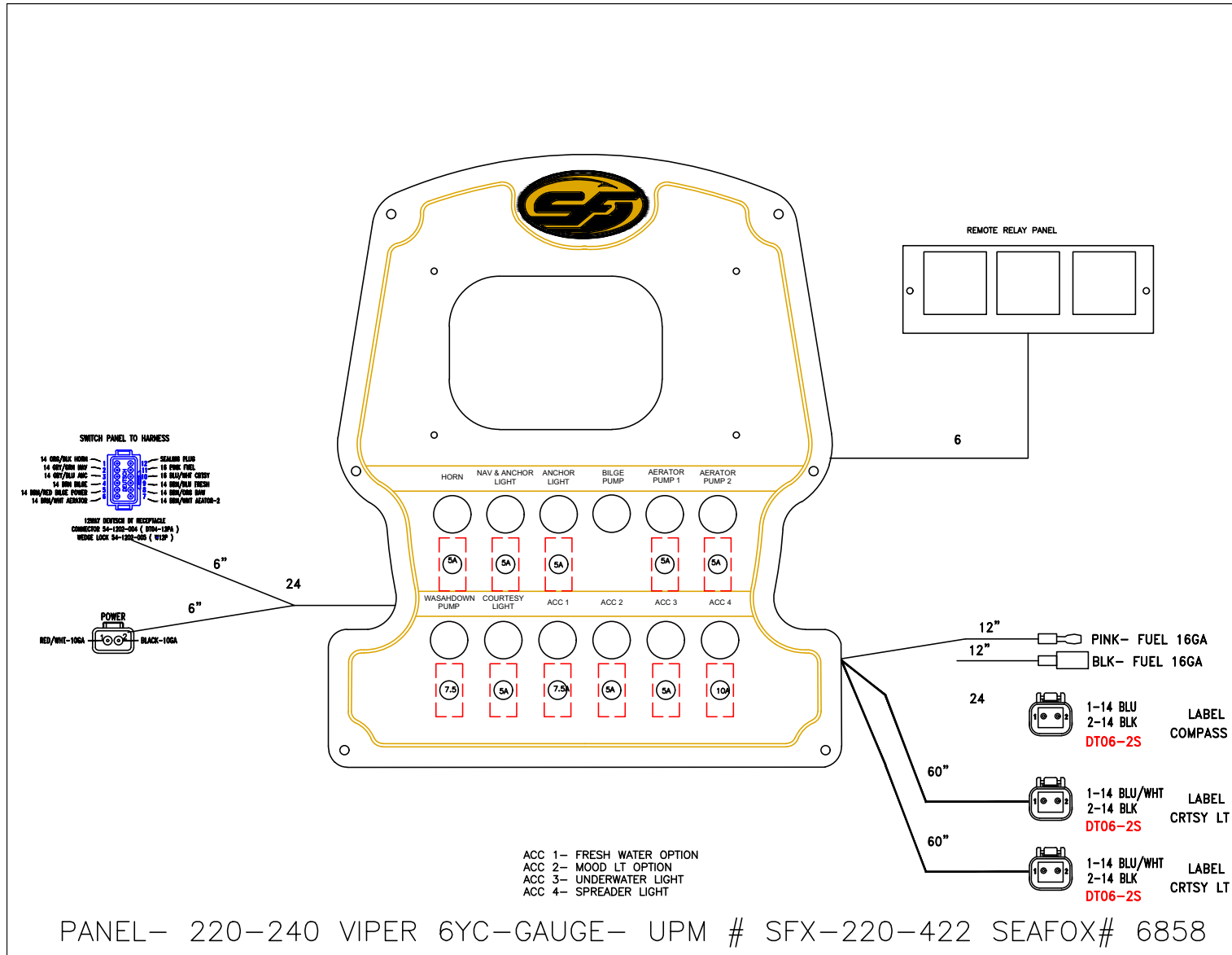
CUSTOMER SEAFOX BOAT CO. W/O # _____
 PART # SF# 6852-UPM# SFX-489-13 DUE DATE _____
 FILENAME _____ MODEL ALL CENTER CONSOLES
 DESCRIPTION HARNES DECK SPEAKER W/LED

NOTES:

- = NON-INS 1/4" FEM. QUICK CONNECTOR W/ DBL-WALL SHRINK
- = NON-INS BUTT CONNECTOR W/ DBL-WALL SHRINK



PANEL SWITCH SHROUD (P/N 6858) – OPTIONAL





This Page Intentionally Left Blank

This Page Intentionally Left Blank



This Page Intentionally Left Blank

This Page Intentionally Left Blank



This Page Intentionally Left Blank

This Page Intentionally Left Blank





Sea Fox Boat Company, Inc.
2550 Highway 52
Moncks Corner, SC 29461-5024

Telephone: 843-761-6090
www.seafoxboats.com

Ken Cook Co.
Printed in U.S.A.
Rev 0819