



Owner's Manual Supplement

www.SeaFoxBoats.com

SEA FOX BOAT'S DISCLAIMER

The following Owner's Manual is provided for information and educational purposes only and is not intended to offer or provide legal advice or create a contractual relationship between Sea Fox Boat Company and the owner of any Sea Fox brand vessel. Please beware that as a vessel owner you have non-delegable responsibilities regarding the safety, maintenance, fitness, and operation of your vessel and the extent of such responsibilities is ultimately determined by Federal law and regulations, the general maritime law of the United States, the laws and regulations of the states and territories of the United States, or the laws and regulations of the country where you operate your vessel. To fully understand your responsibilities as a vessel owner, and before operating or letting any third-party operate your vessel, we recommend that you consult the services of a qualified lawyer in admiralty and maritime law.

TABLE OF CONTENTS

Introduction	3	Panel Switch Shroud (P/N 6510)	15
Specifications	3	Harness Nav Short	16
Designated Occupant Seating	4	Trimtabs Electrical Switch Standard (P/N 2895) – Optional	17
Plumbing Schematics	5	Harness Mood Light w/Deutsch (P/N 6128) – Optional	18
Viper Bilge System	5	Harness Stereo Infinity Con (P/N 6129) – Optional	19
Viper Deck Drains	6	Harness Stereo Infinity Deck (P/N 6130) – Optional	20
Viper Fresh Water System	7	Harness Underwater Light w/Deutsch (P/N 6133) – Optional ..	21
Viper Fuel System	8	U Panel Switch Ultima (P/N 6463) – Optional	22
Viper Livewell System	9	Center Console Ultima Top – 2016 (P/N 6463, 6464 and	
Viper Mister System	10	6476) – Optional	23
Viper Raw Water System	11	Harness Trimtab Electric 20 ft Lenco (P/N 6564) – Optional ...	24
Electrical Schematics	12	Harness Stereo Kicker Con 2016 (P/N 6851) – Optional	25
Typical 2-Battery Setup in Console	12	Harness Stereo Kicker Deck 2016 (P/N 6852) – Optional	26
Harness Trolling Motor 180-240 (P/N 4823)	13	Panel Switch Shroud (P/N 6858) – Optional	27
Harness ACC w/Deutsch (P/N 6402)	14		



This Page Intentionally Left Blank

INTRODUCTION

Congratulations and Welcome Aboard! With so many boat brands to choose from, we want to congratulate you on your decision to choose Sea Fox Boats. For more than 24 years, Sea Fox offers the finest hand-crafted saltwater boats carefully balanced with the build-quality, features, styling and performance for the fairest price. Our passion for boating is evident in every model we make and we appreciate that you've noticed the Sea Fox difference.

We share your love for the moments spent on the water with friends and family, which is why every Sea Fox boat offers a unique blend of fishing/family options, technologies and innovative features. Your choice of a Sea Fox affirms that you have performed your research and compared the value of your model with the competition.

Whether you are new to the boating lifestyle or an old salt, we ask that **you and all other operators** read the owner's manual, this supplement, and all other literature provided with the boat **before** operating the boat or any equipment. We also recommend that all operators enroll in a boating safety course available online - see References and Contact Information in this section for education resources online.

This supplement contains model-specific information not included with the owner's manual. This manual is not intended to be a replacement for specific product literature provided by engine, accessory or other major equipment manufacturers, but rather to supplement that information.

Because of our philosophy of continuous product improvement, this manual serves as a general guide only, so the specifications and illustrations used may not match the equipment on your boat and are intended only as general reference views.

We welcome you to the Sea Fox family and wish you many years of boating enjoyment!

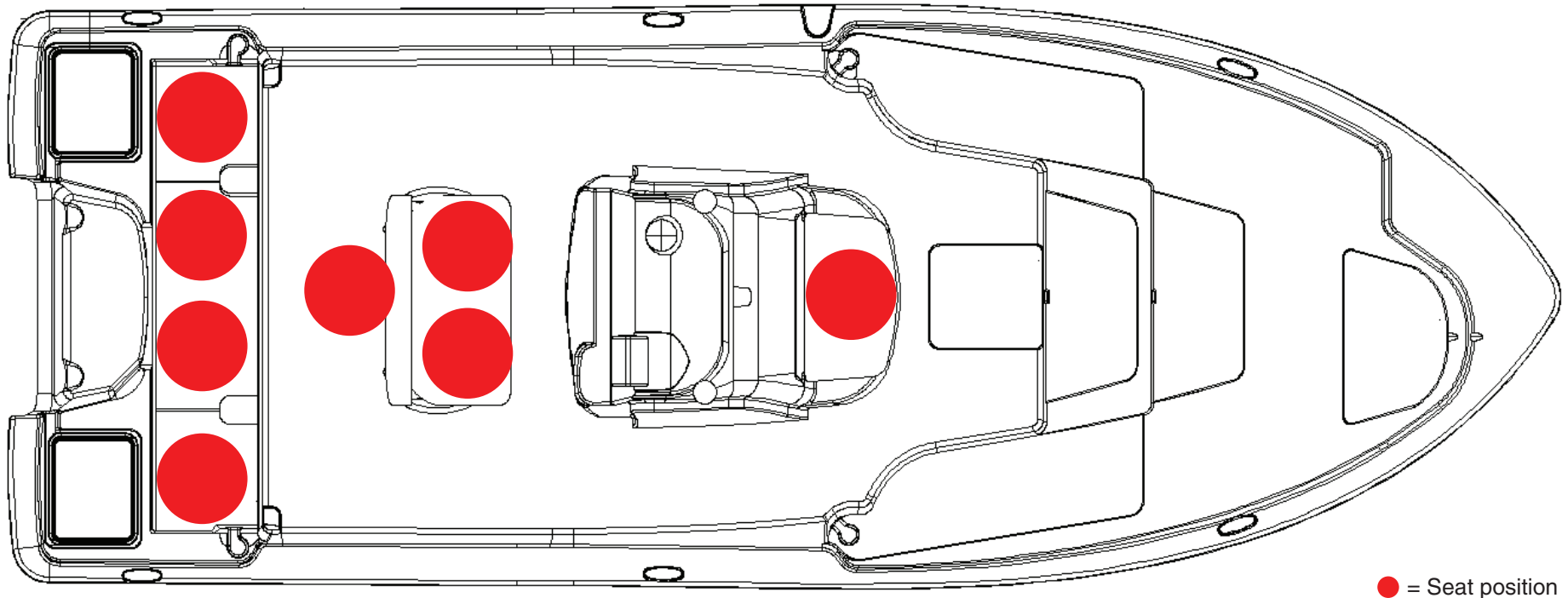
SPECIFICATIONS

Max. Weight Capacity	2100 lbs (952 kg)
Persons	8
Persons Weight	1130 lbs (512 kg)
Max. HP	250 hp (167 kw)
L.O.A.	22' 4" (6.8 m)
Beam	8' 6" (2.59 m)
Draft	13 in. (0.33 m)
Height, Keel to Top (Light Folded)	107 in. (2.72 m)
Bridge Clearance Hard Top	94 in. (2.39 m)
Max. Weight Boat (w/ Fluids, Largest HP)	3201 lbs (1452 kg)
Fuel Tank Capacity	64 gal (242 L)
Freshwater Tank Capacity	6 gal (23 L)
Holding Tank Capacity	N/A



DESIGNATED OCCUPANT SEATING

Be sure all passengers are properly seated in designated seating positions and not riding on the bow, bow pulpit, deck, gunwale or rear sun deck while underway. Passengers must use hand-holds and use caution when riding in the bow. Move to the aft passenger seats during rough water operation or if visibility is restricted.

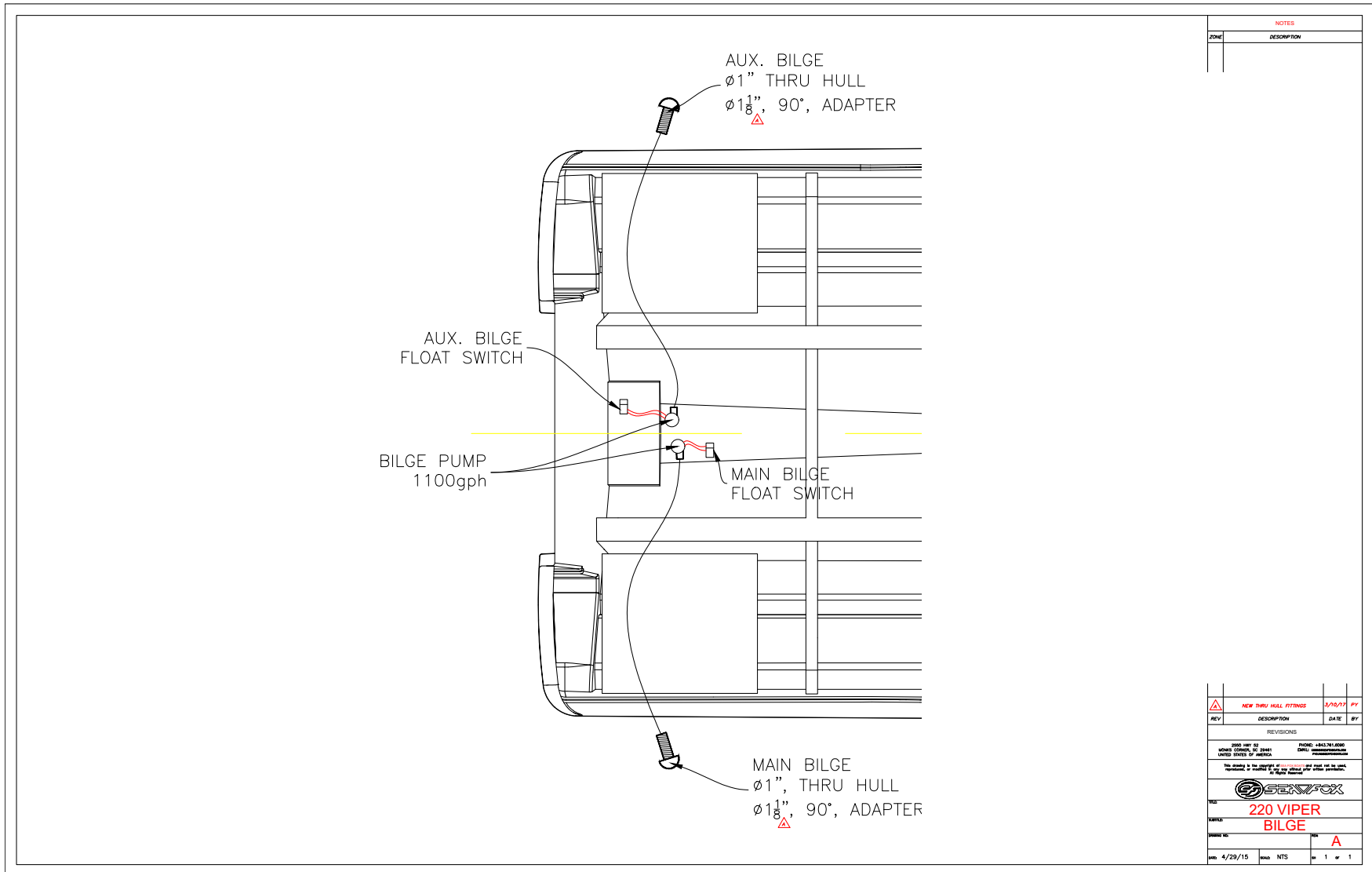


● = Seat position

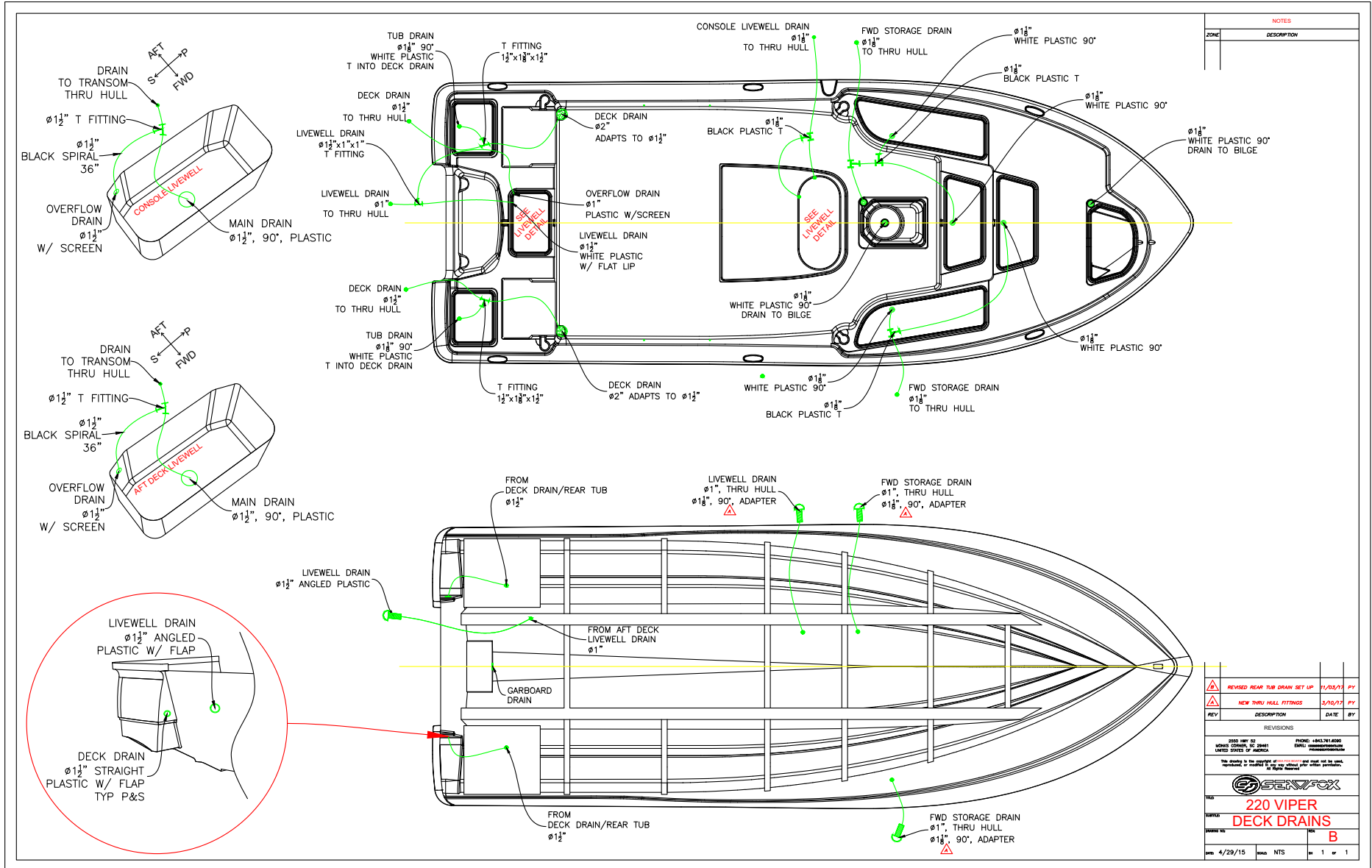
SFOX-0014

PLUMBING SCHEMATICS

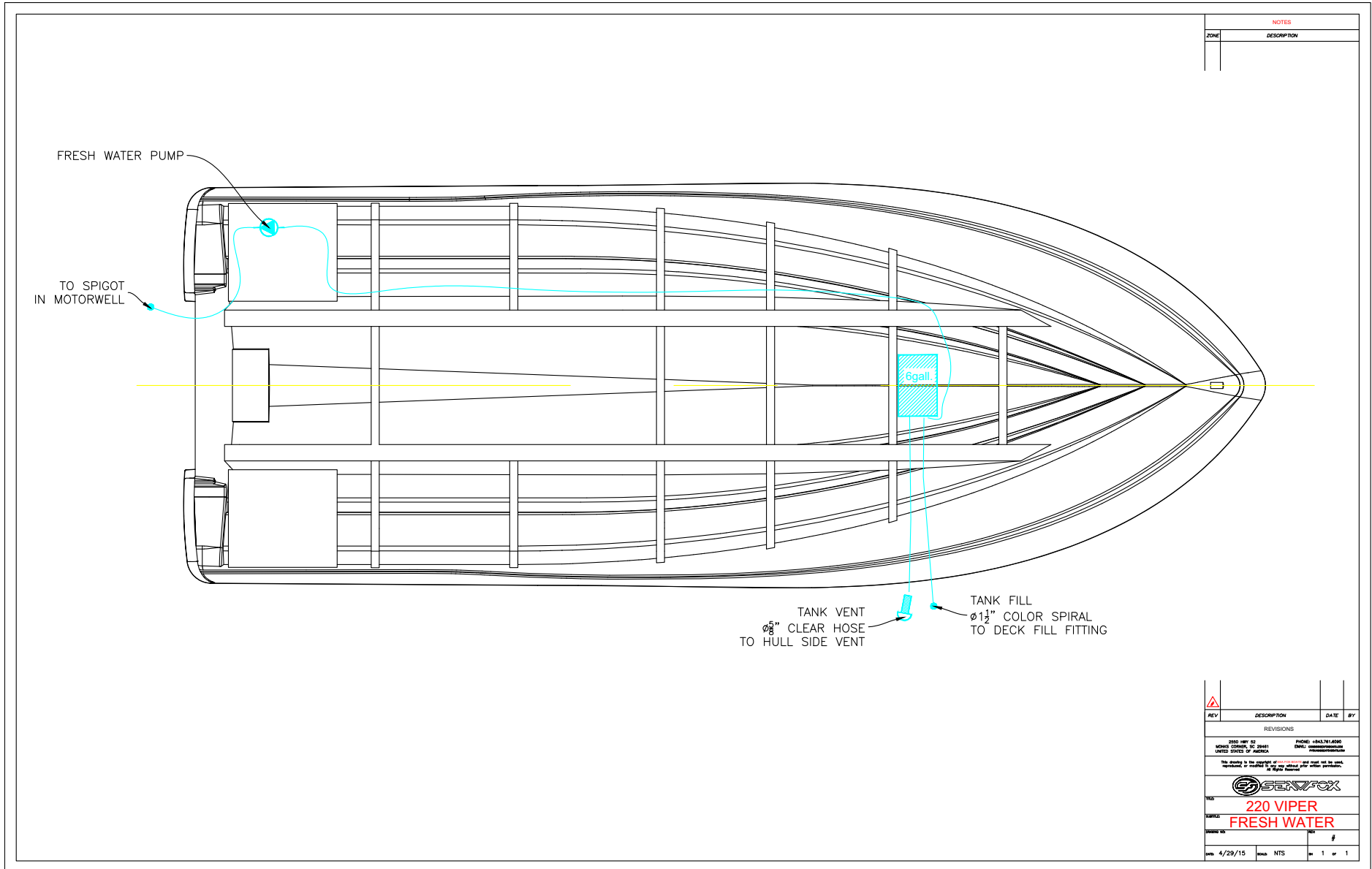
VIPER BILGE SYSTEM



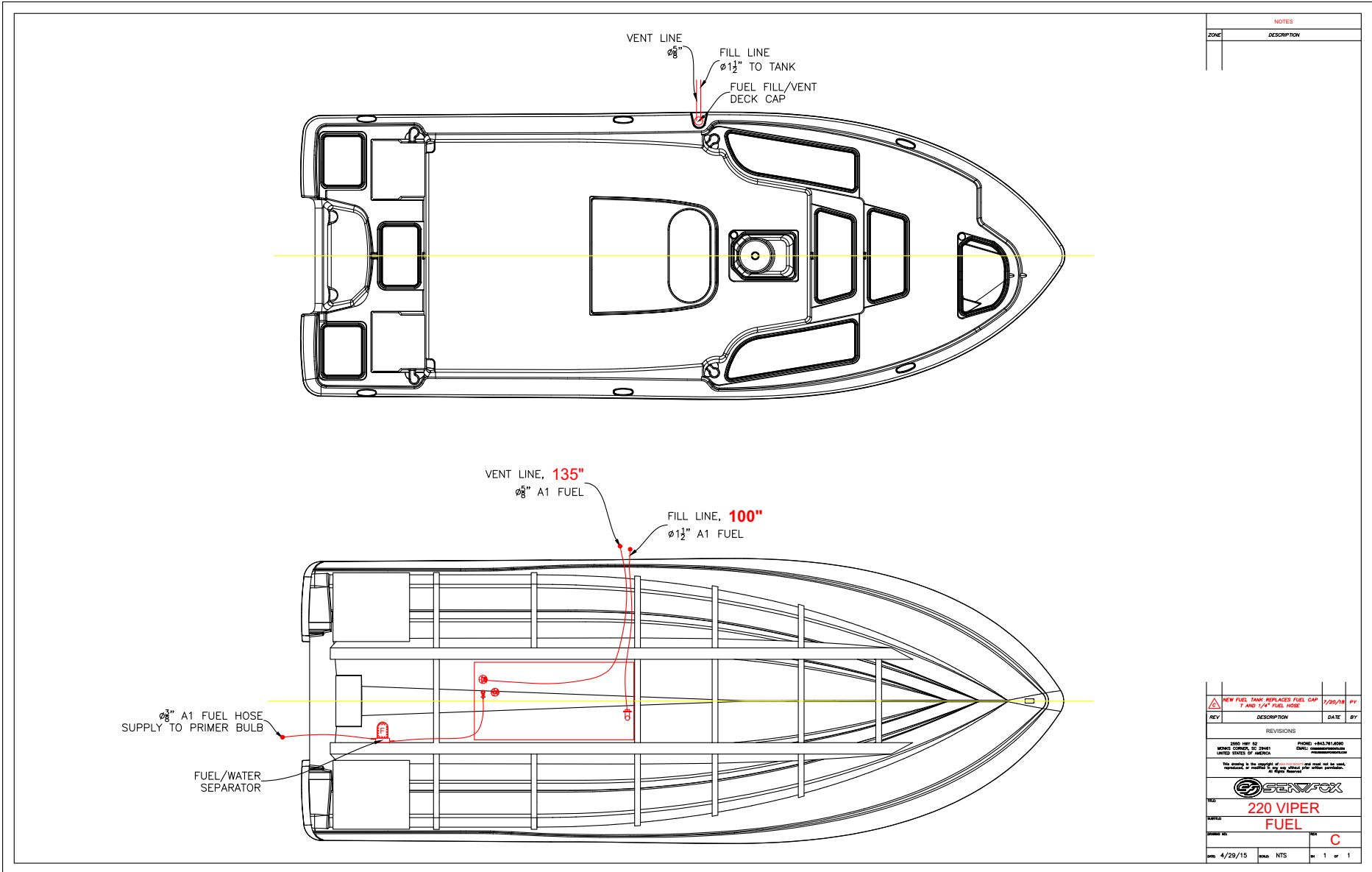
VIPER DECK DRAINS



VIPER FRESH WATER SYSTEM



VIPER FUEL SYSTEM



NOTES	
ZONE	DESCRIPTION

REV	DESCRIPTION	DATE	BY

REVISIONS

2000 HWY 52 PHONE: +843.761.6000
 MOUNTAIN VIEW, SC 29661 EMAIL: info@seafox.com
 UNITED STATES OF AMERICA

This drawing is the property of SeaFox and must not be used, reproduced or modified in any way without prior written permission. All Rights Reserved.

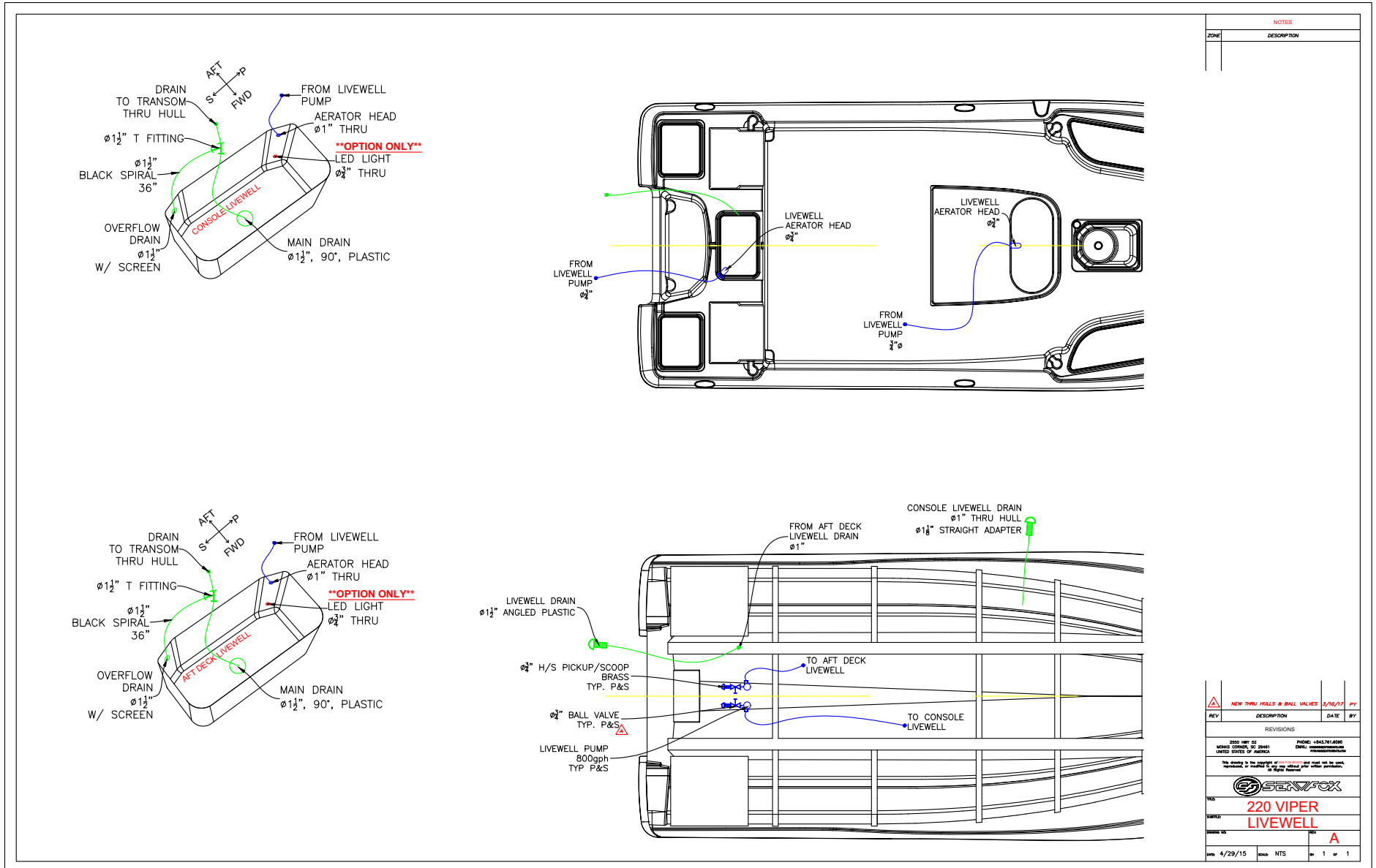
SEAFOX

TITLE: **220 VIPER FUEL**

SCALE: **C**

DATE: 4/29/15 DRAWN BY: INTS SHEET: 1 of 1

VIPER LIVEWELL SYSTEM



NOTES	
ZONE	DESCRIPTION

REV	DESCRIPTION	DATE	BY
1	NEW THRU HULLS & BALL VALVES	3/10/17	BT

REVISIONS

THIS SET OF DRAWINGS IS THE PROPERTY OF SEAFOX BOATS, INC. AND IS TO BE USED FOR THE MANUFACTURE OF SEAFOX BOATS ONLY. ANY REPRODUCTION OR USE OF THESE DRAWINGS FOR ANY OTHER PURPOSE IS STRICTLY PROHIBITED.

SEAFOX

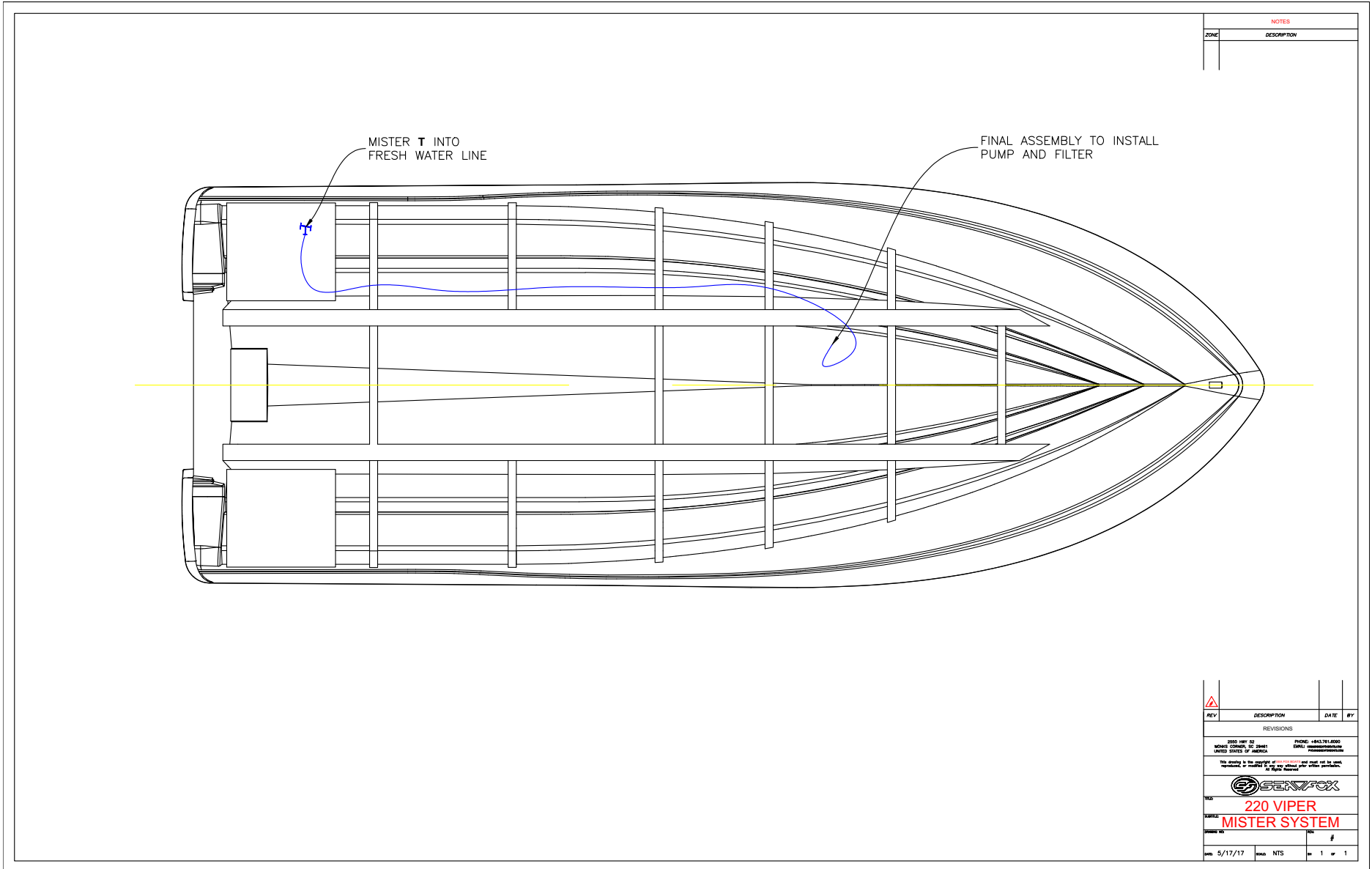
220 VIPER LIVEWELL

DATE 4/29/15

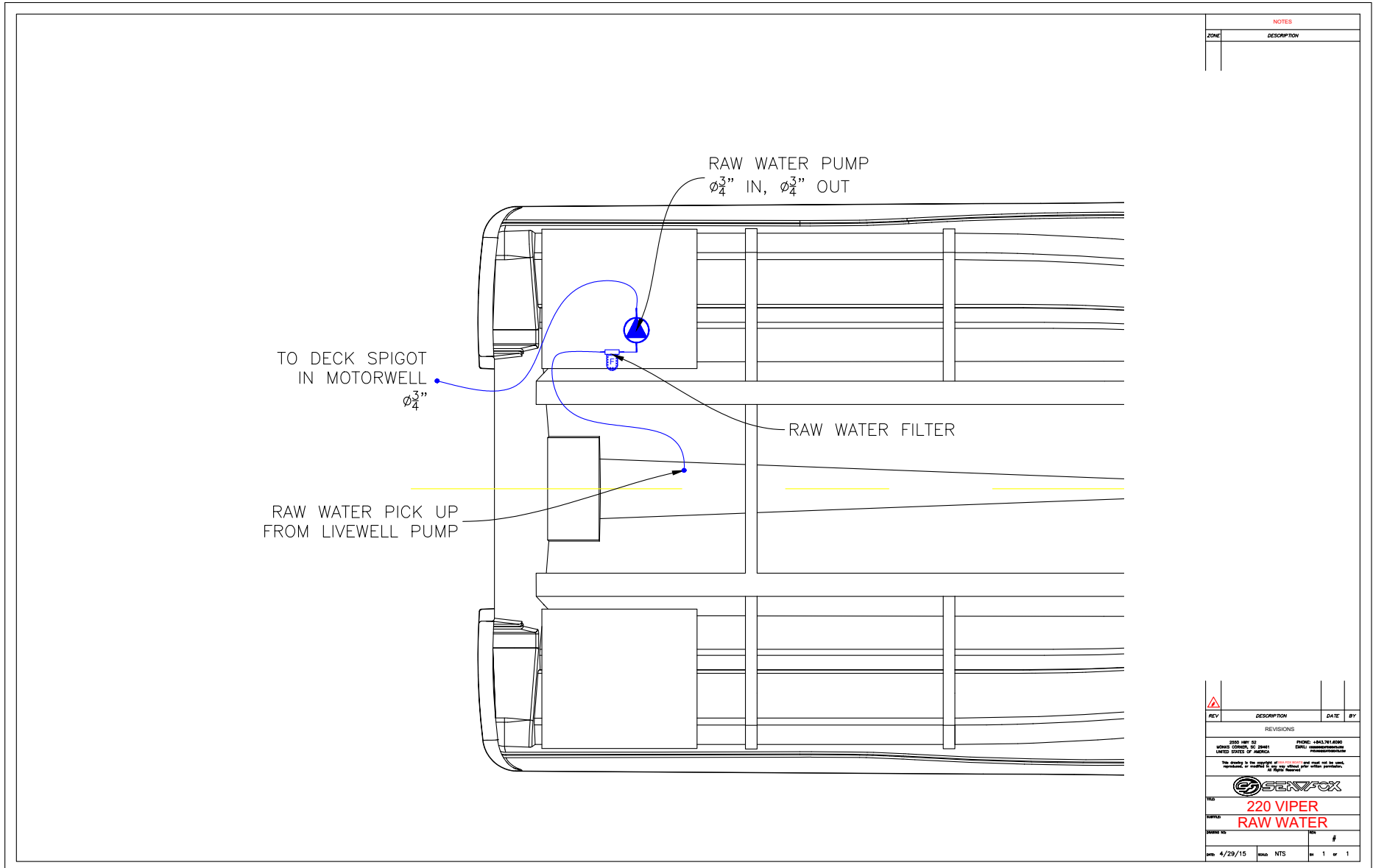
SCALE NTS

PAGE 1 OF 1

VIPER MISTER SYSTEM

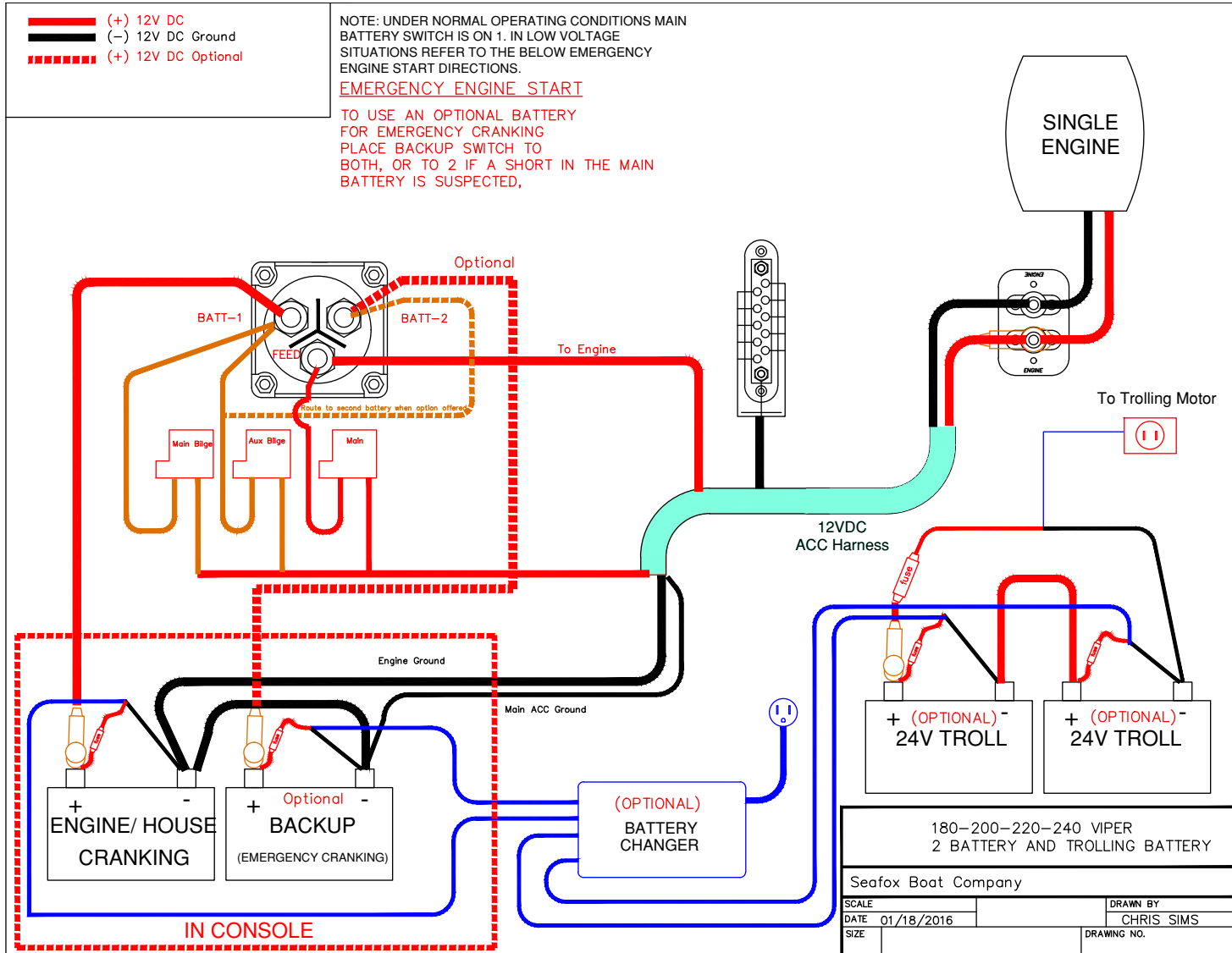


VIPER RAW WATER SYSTEM

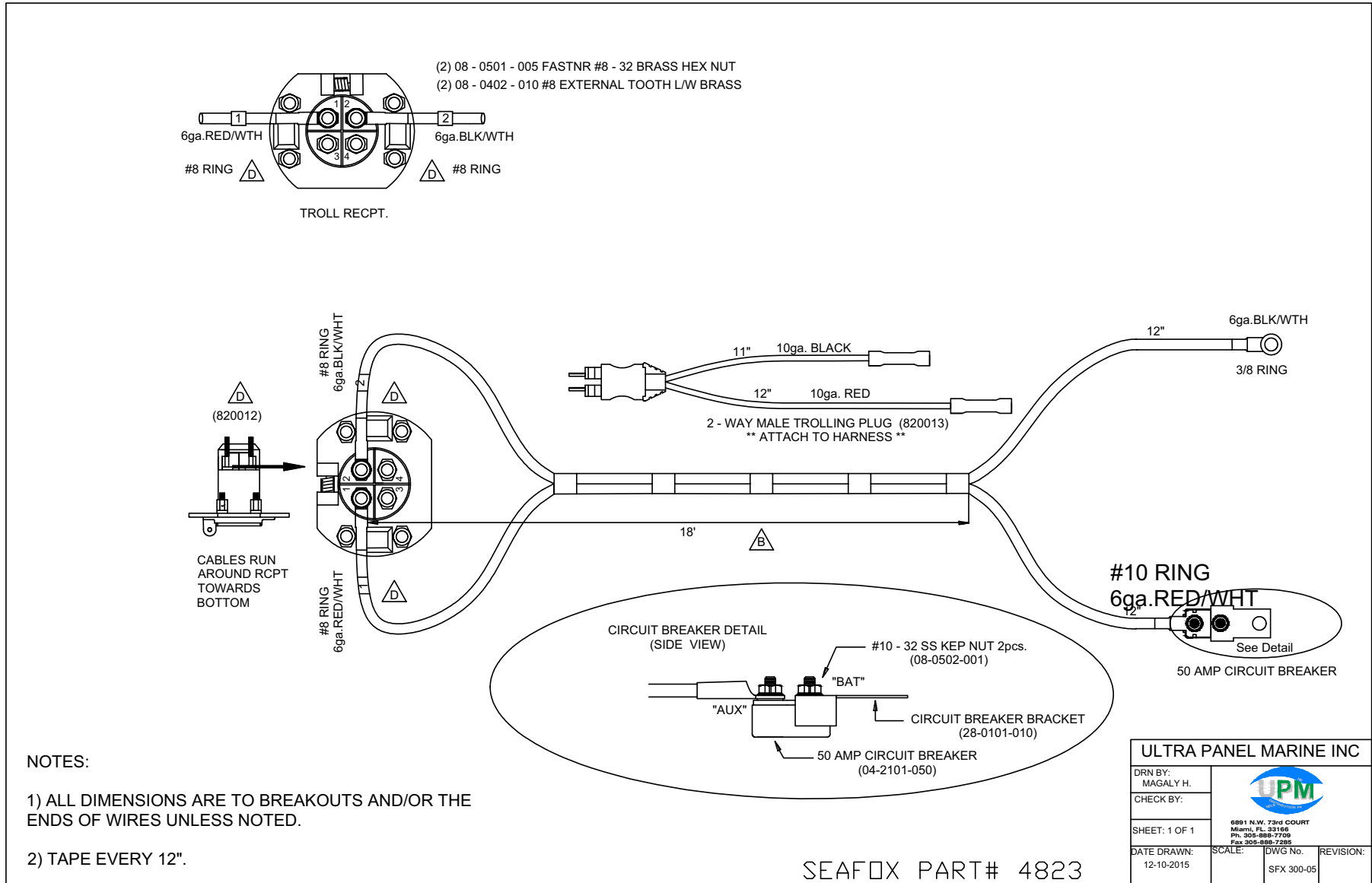


ELECTRICAL SCHEMATICS

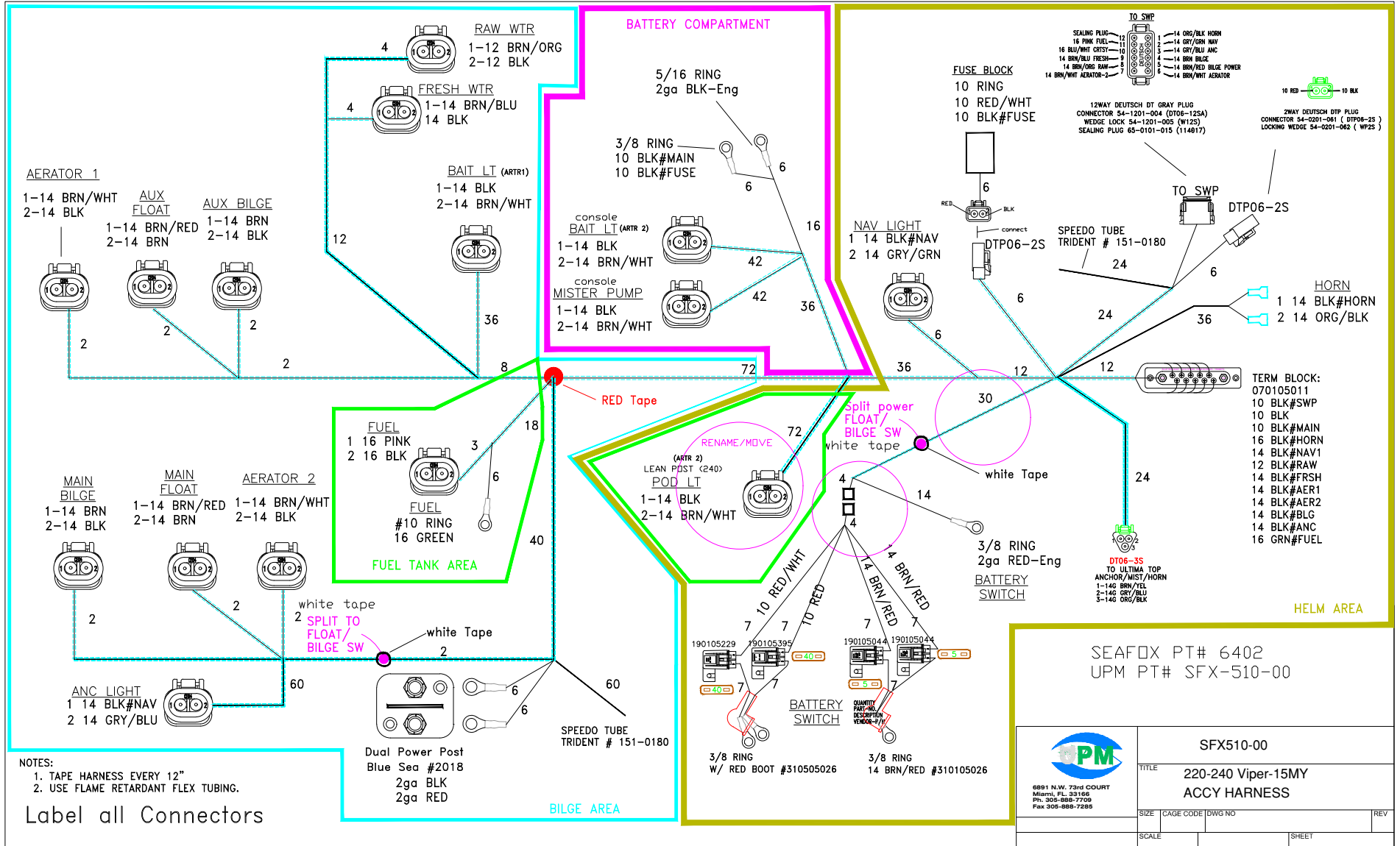
TYPICAL 2-BATTERY SETUP IN CONSOLE



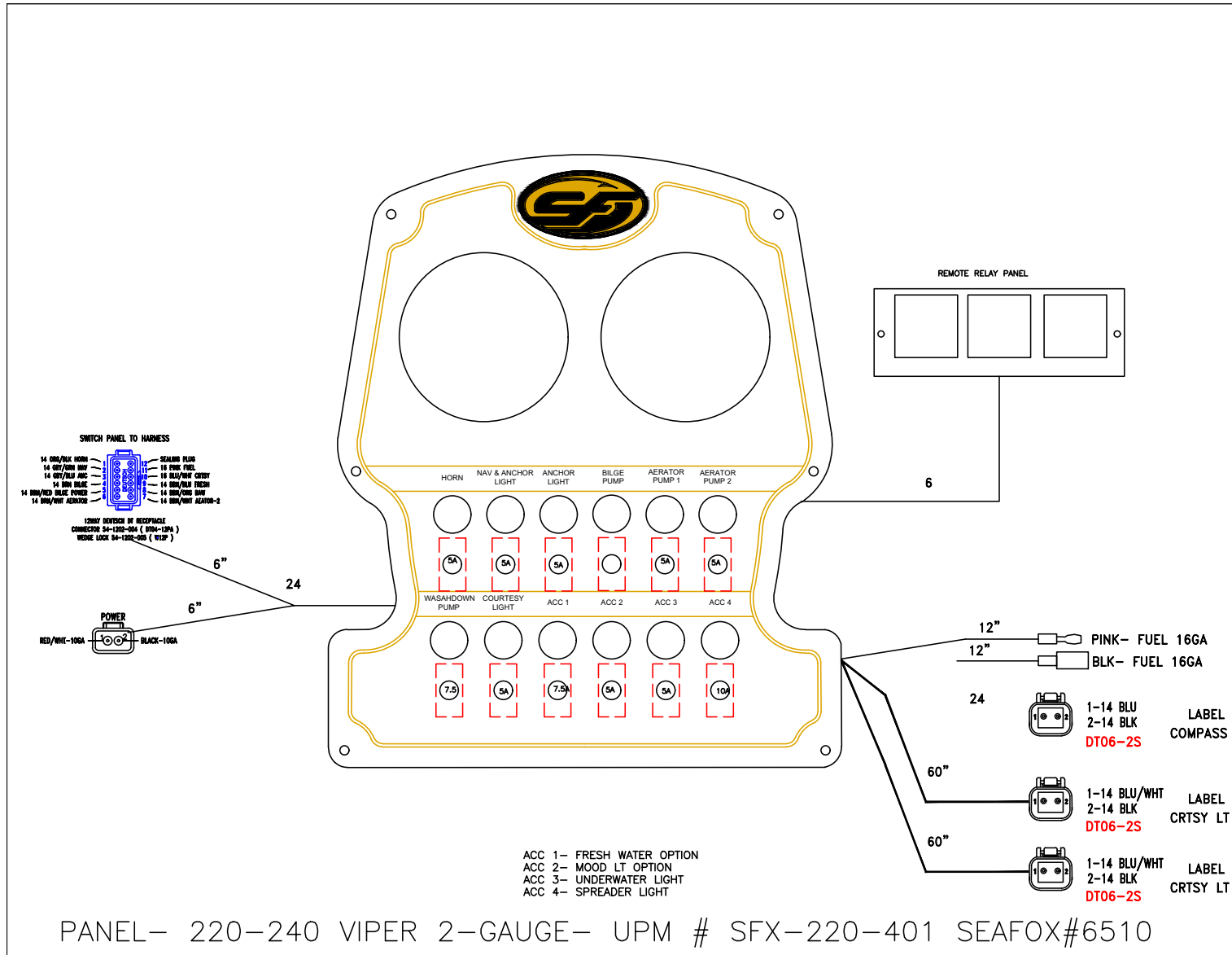
HARNESS TROLLING MOTOR 180-240 (P/N 4823)



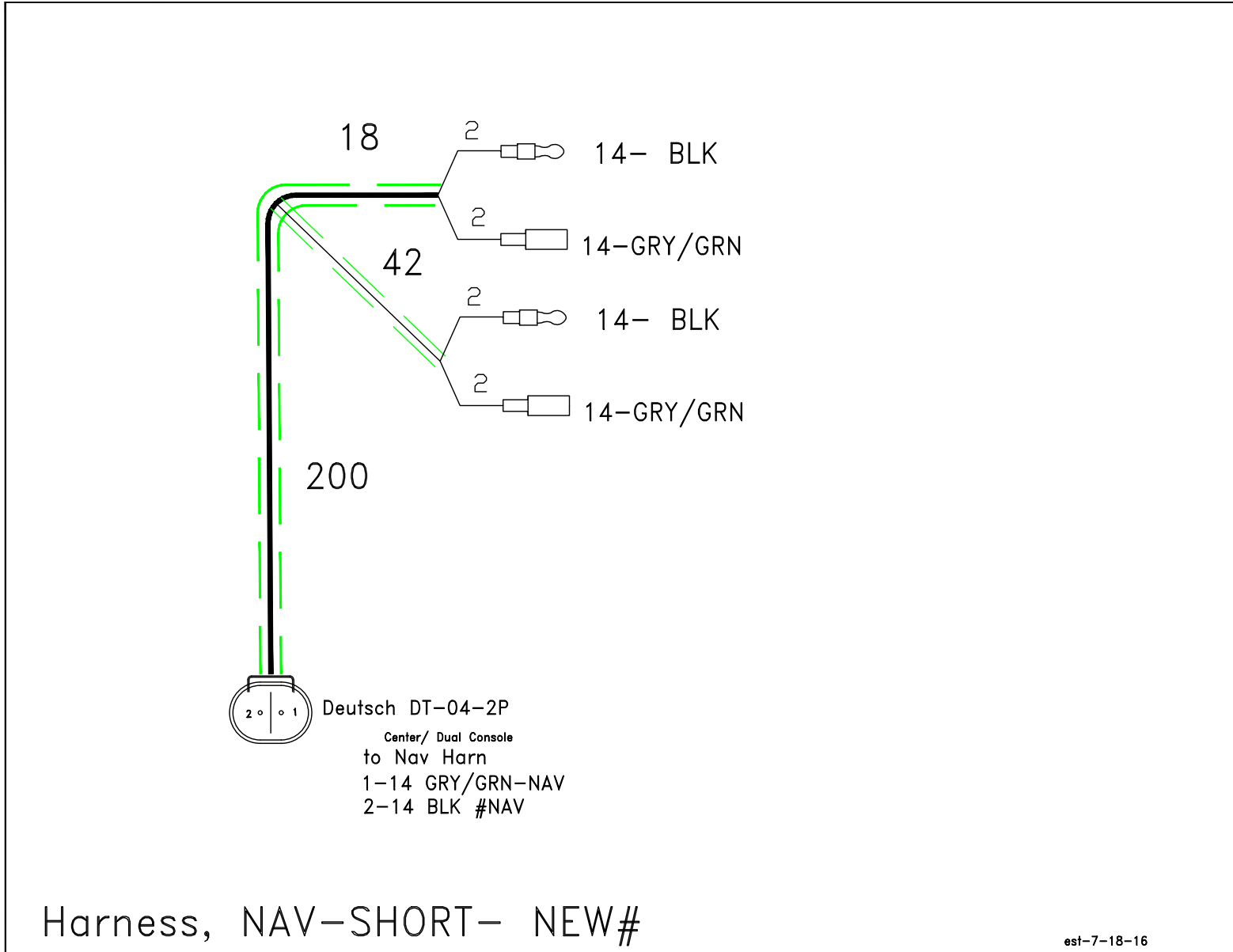
HARNES ACC W/DEUTSCH (P/N 6402)



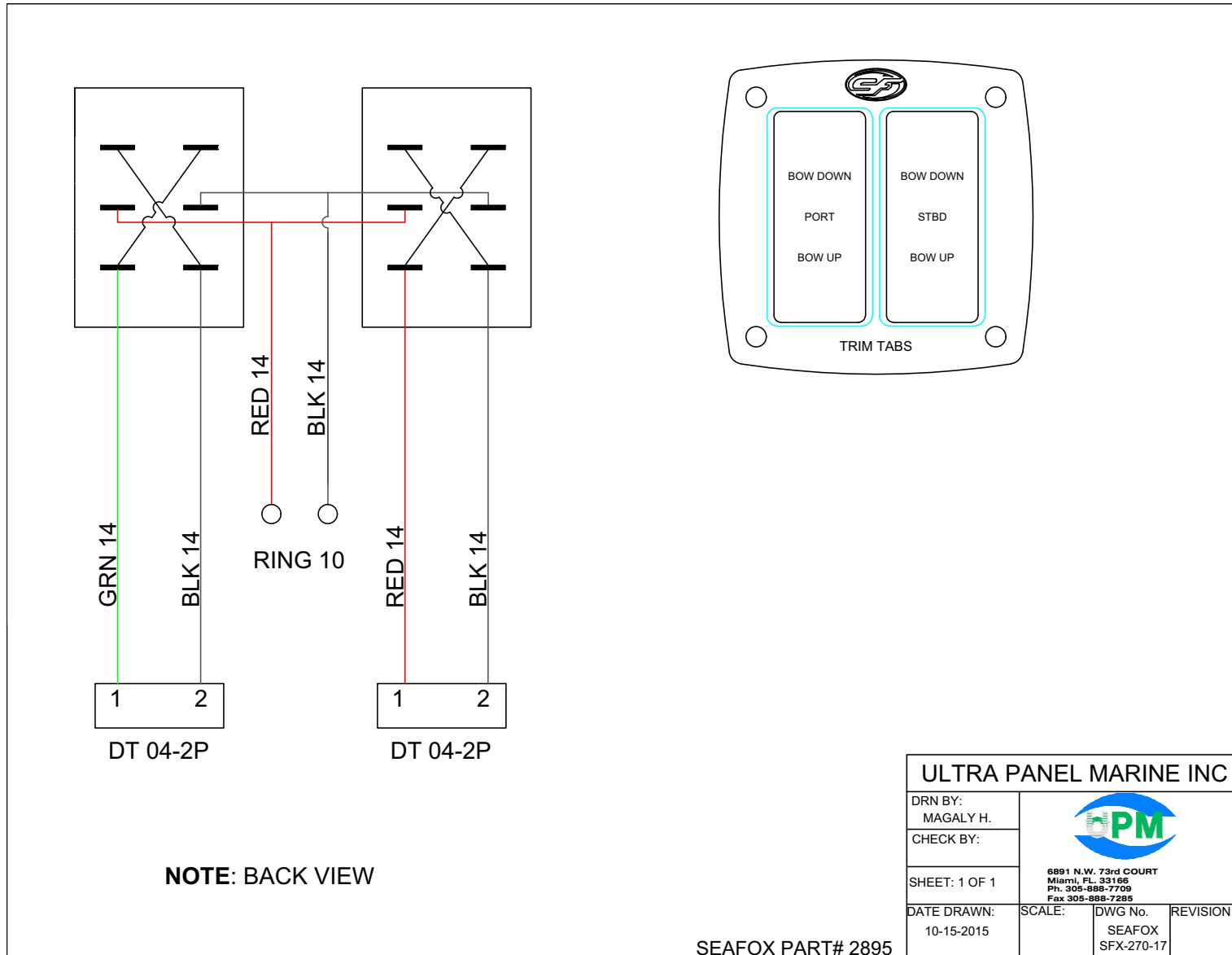
PANEL SWITCH SHROUD (P/N 6510)



HARNES NAV SHORT

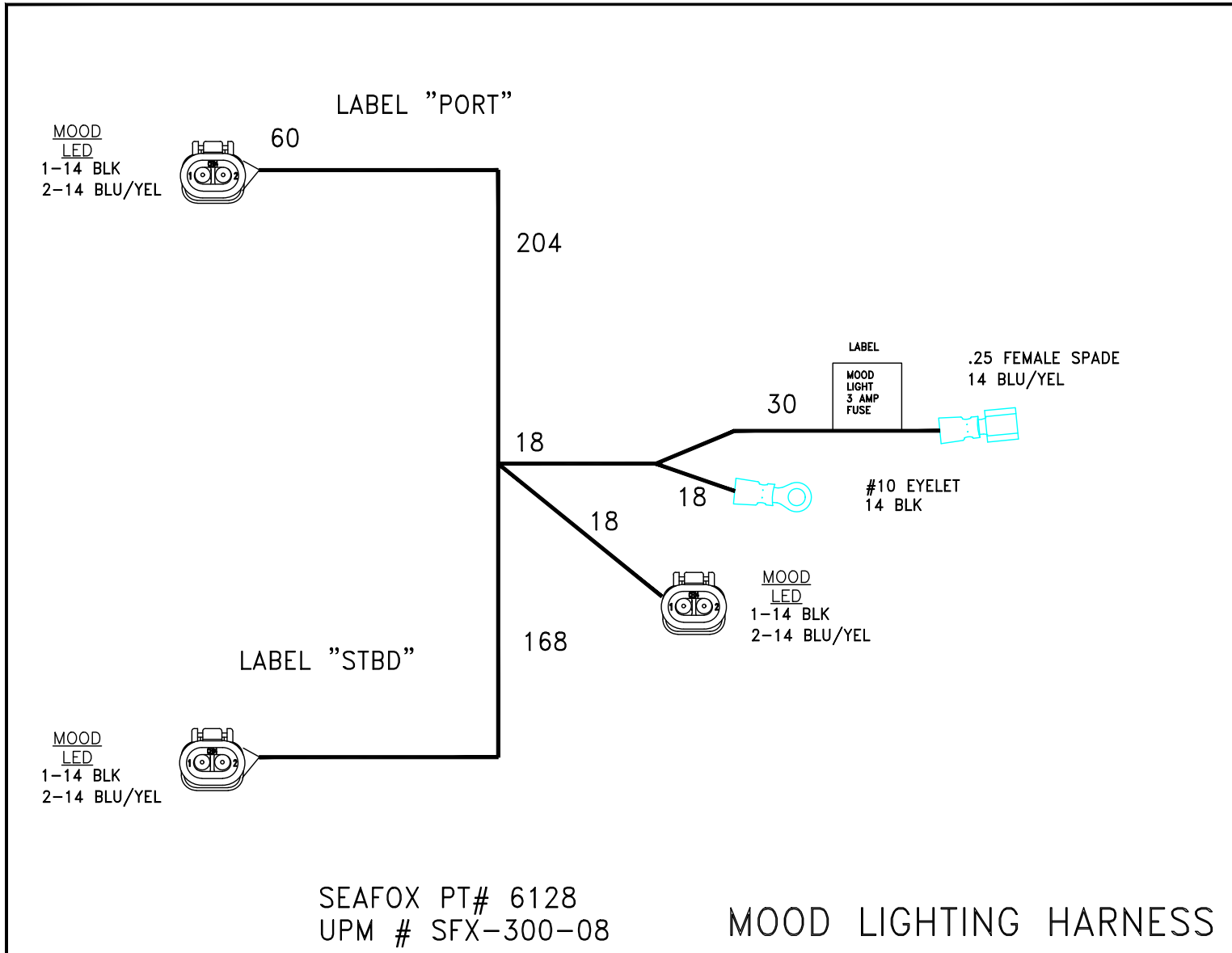


TRIMTABS ELECTRICAL SWITCH STANDARD (P/N 2895) – OPTIONAL



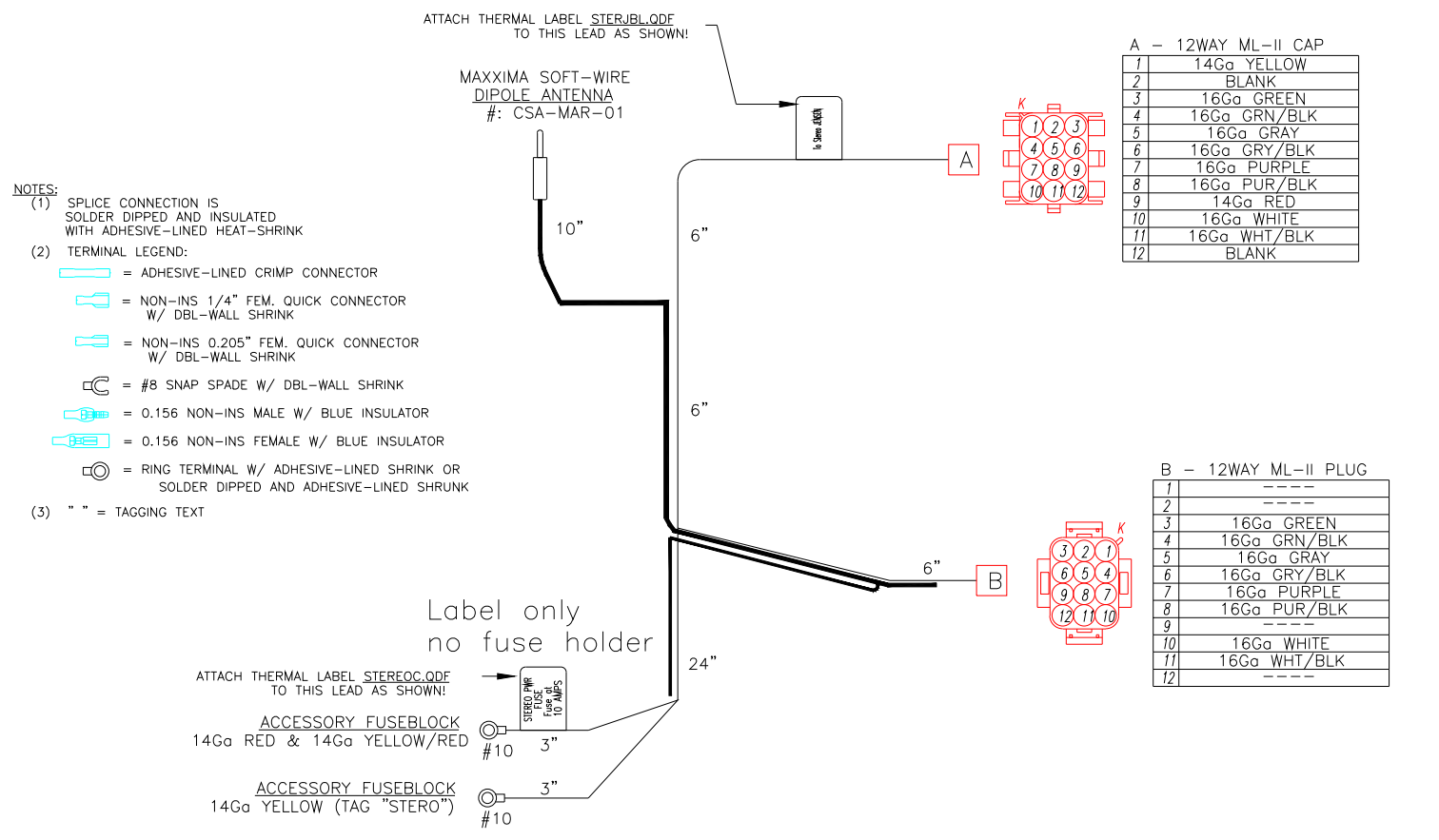


HARNES MOOD LIGHT W/DEUTSCH (P/N 6128) – OPTIONAL



HARNES STEREO INFINITY CON (P/N 6129) – OPTIONAL

CUSTOMER SEAFOX BOAT CO. W/O # _____
 PART # 6129 UPM# SFX-300-09 DUE DATE _____
 FILENAME _____ MODEL ALL MODELS
 DESCRIPTION HARNES STEREO INFINITY/JENSEN






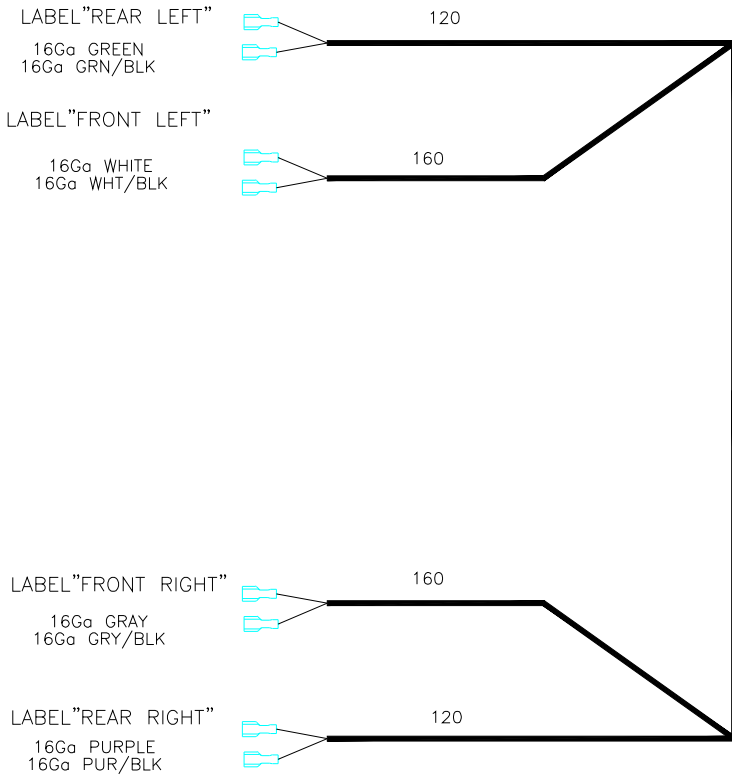
HARNES STEREO INFINITY DECK (P/N 6130) – OPTIONAL

CUSTOMER SEAFOX BOAT CO.
 PART # 6130 UPM# SFX-300-04
 FILENAME _____

W/O # _____
 DUE DATE _____
 MODEL ALL MODELS
 DESCRIPTION HARNES DECK ININTY STEREO

NOTES:

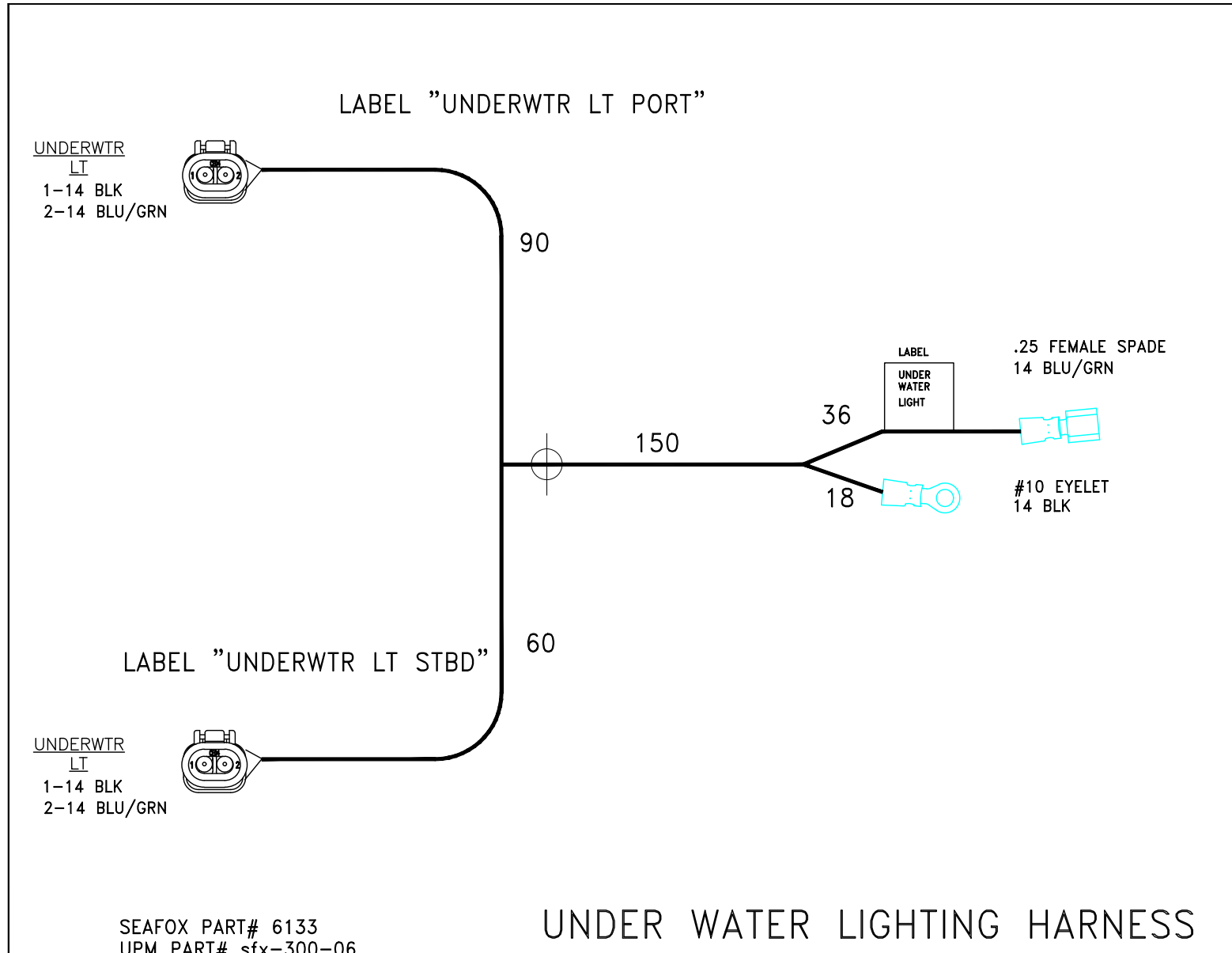
 = NON-INS 1/4" FEM. QUICK CONNECTOR
 W/ DBL-WALL SHRINK



B - 12WAY ML-II PLUG

1	----
2	----
3	16Ga GREEN
4	16Ga GRN/BLK
5	16Ga GRAY
6	16Ga GRY/BLK
7	16Ga PURPLE
8	16Ga PUR/BLK
9	----
10	16Ga WHITE
11	16Ga WHT/BLK
12	----

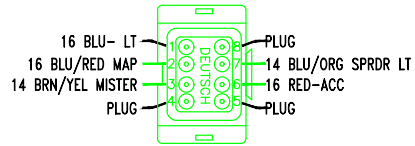
HARNES UNDERWATER LIGHT W/DEUTSCH (P/N 6133) – OPTIONAL



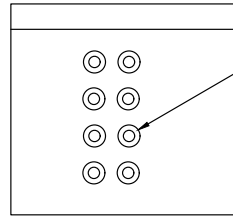
U PANEL SWITCH ULTIMA (P/N 6463) – OPTIONAL

SEAFOX PT# 6463
UPM PT# SFX-600-40

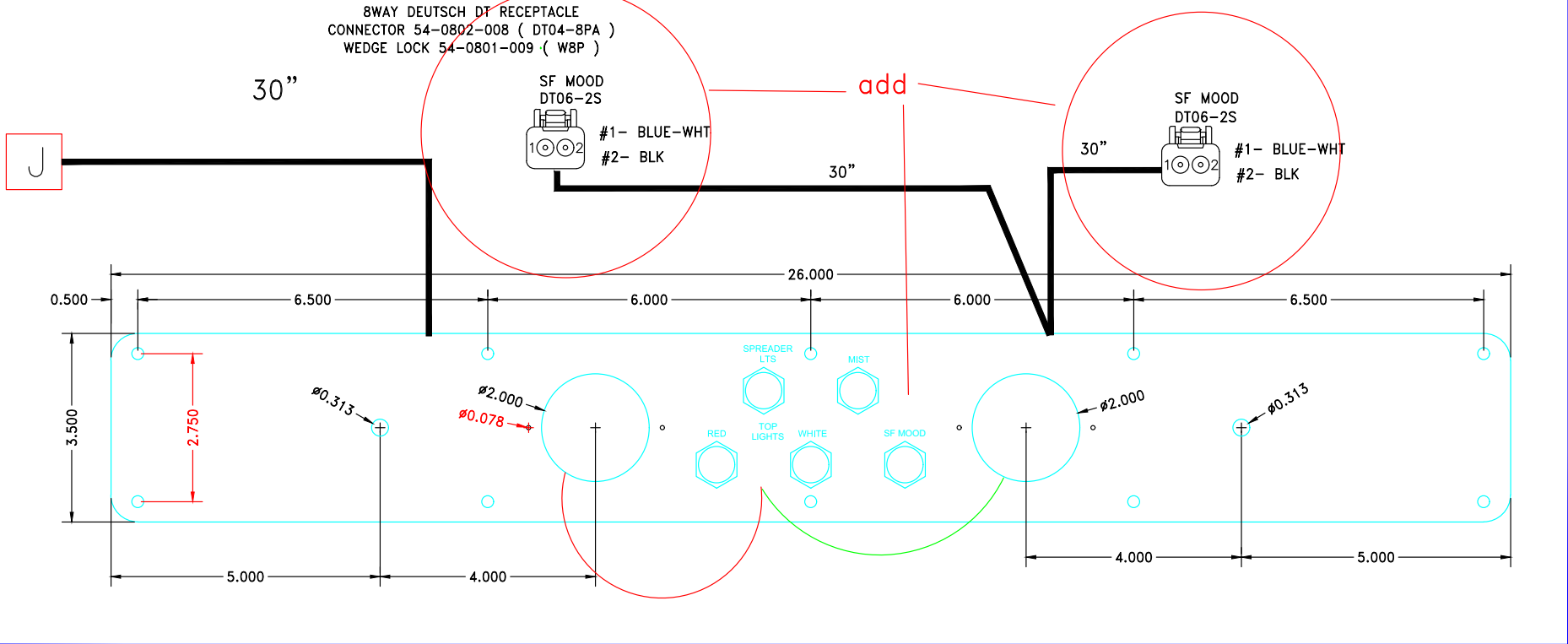
3 OF 3



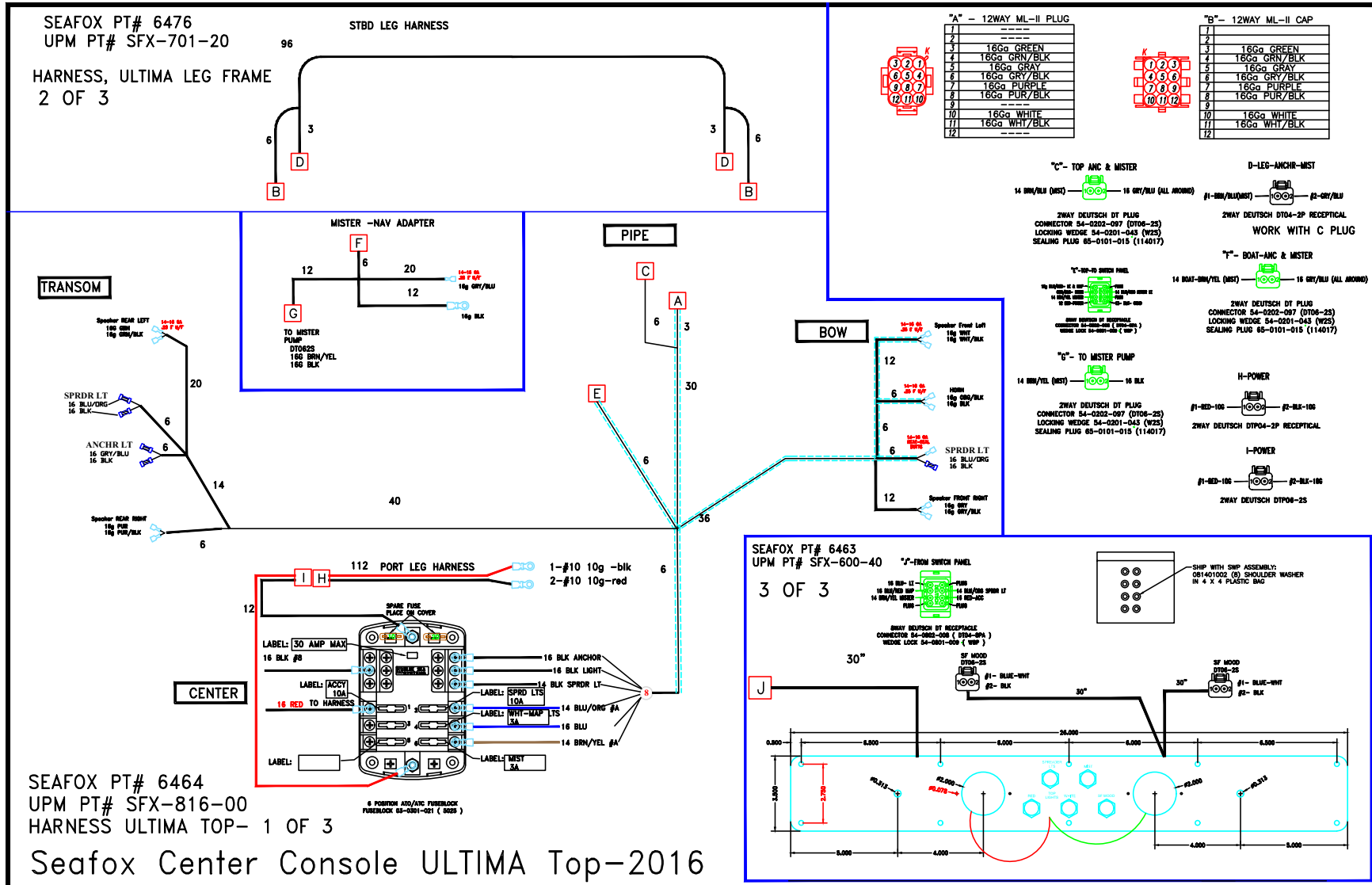
8WAY DEUTSCH DT RECEPTACLE
CONNECTOR 54-0802-008 (DT04-8PA)
WEDGE LOCK 54-0801-009 (W8P)



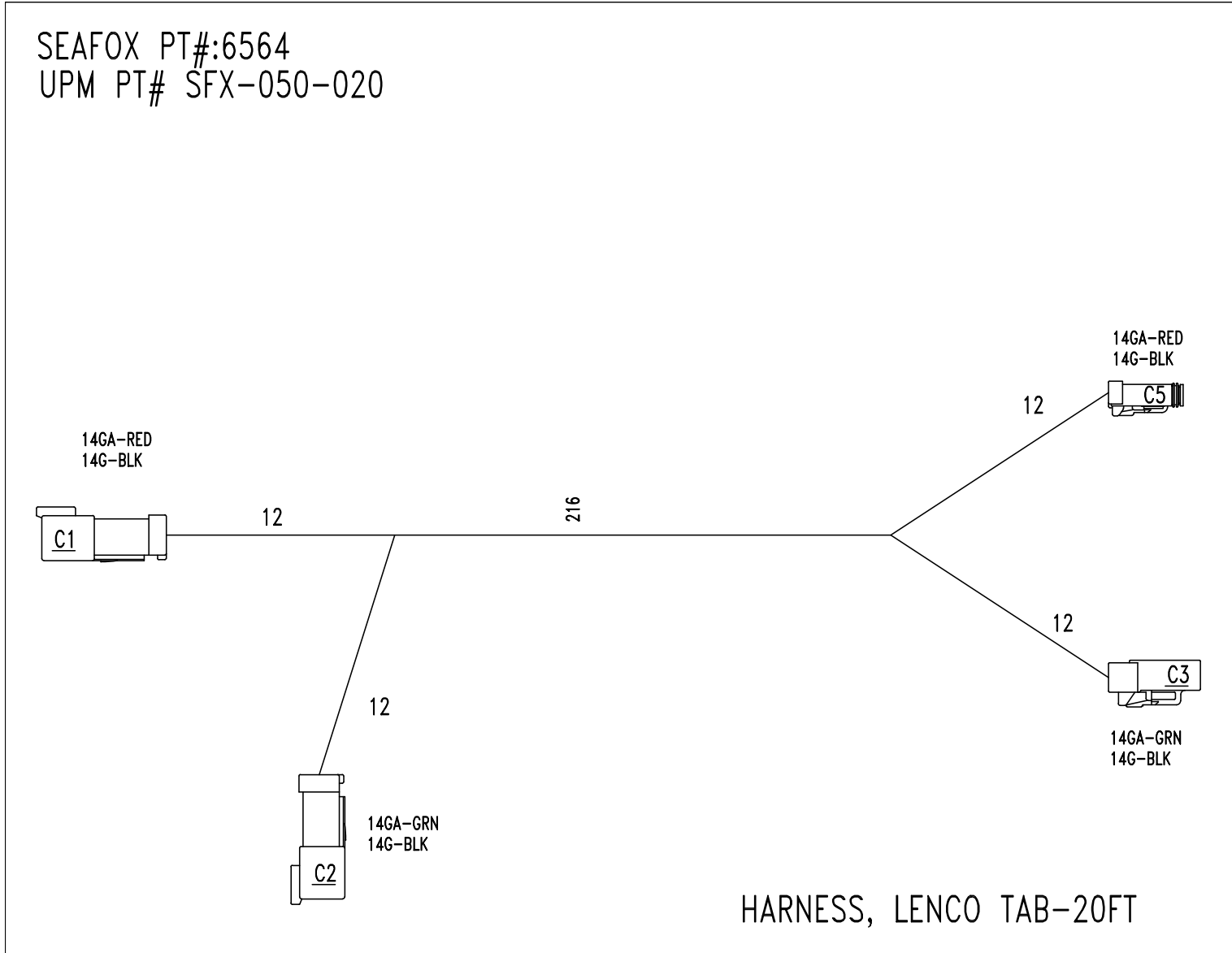
SHIP WITH SWP ASSEMBLY:
081401002 (8) SHOULDER WASHER
IN 4 X 4 PLASTIC BAG



CENTER CONSOLE ULTIMA TOP – 2016 (P/N 6463, 6464 AND 6476) – OPTIONAL



HARNESS TRIMTAB ELECTRIC 20 FT Lenco (P/N 6564) – OPTIONAL



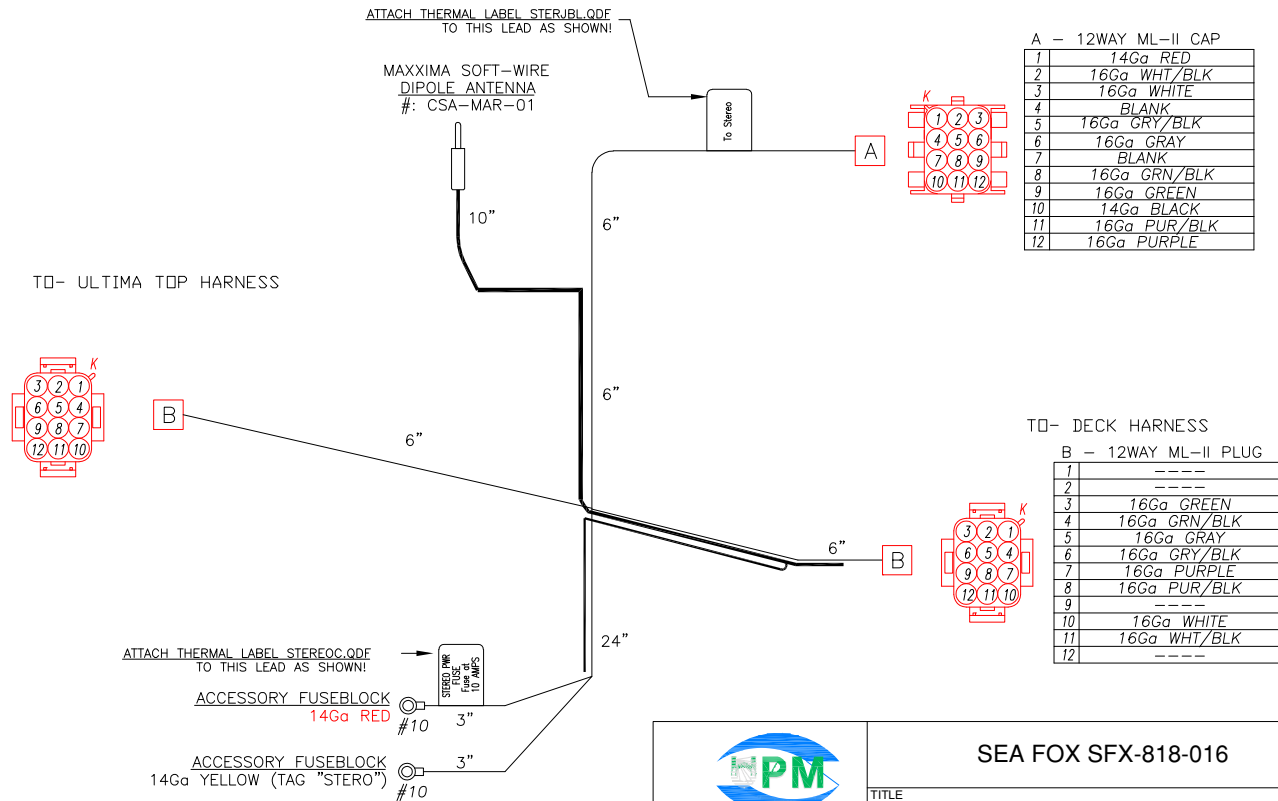
HARNES STEREO KICKER CON 2016 (P/N 6851) – OPTIONAL

NOTES:

- (1) SPLICE CONNECTION IS SOLDER DIPPED AND INSULATED WITH ADHESIVE-LINED HEAT-SHRINK
- (2) TERMINAL LEGEND:
 - = ADHESIVE-LINED CRIMP CONNECTOR
 - = NON-INS 1/4" FEM. QUICK CONNECTOR W/ DBL-WALL SHRINK
 - = NON-INS 0.205" FEM. QUICK CONNECTOR W/ DBL-WALL SHRINK
 - = #8 SNAP SPADE W/ DBL-WALL SHRINK
 - = 0.156 NON-INS MALE W/ BLUE INSULATOR
 - = 0.156 NON-INS FEMALE W/ BLUE INSULATOR
 - = RING TERMINAL W/ ADHESIVE-LINED SHRINK OR SOLDER DIPPED AND ADHESIVE-LINED SHRUNK
- (3) " " = TAGGING TEXT

B - 12WAY ML-II PLUG

1	----
2	----
3	16Ga GREEN
4	16Ga GRN/BLK
5	16Ga GRAY
6	16Ga GRY/BLK
7	16Ga PURPLE
8	16Ga PUR/BLK
9	----
10	16Ga WHITE
11	16Ga WHT/BLK
12	----



A - 12WAY ML-II CAP

1	14Ga RED
2	16Ga WHT/BLK
3	16Ga WHITE
4	BLANK
5	16Ga GRY/BLK
6	16Ga GRAY
7	BLANK
8	16Ga GRN/BLK
9	16Ga GREEN
10	14Ga BLACK
11	16Ga PUR/BLK
12	16Ga PURPLE

T0- DECK HARNESS

B - 12WAY ML-II PLUG

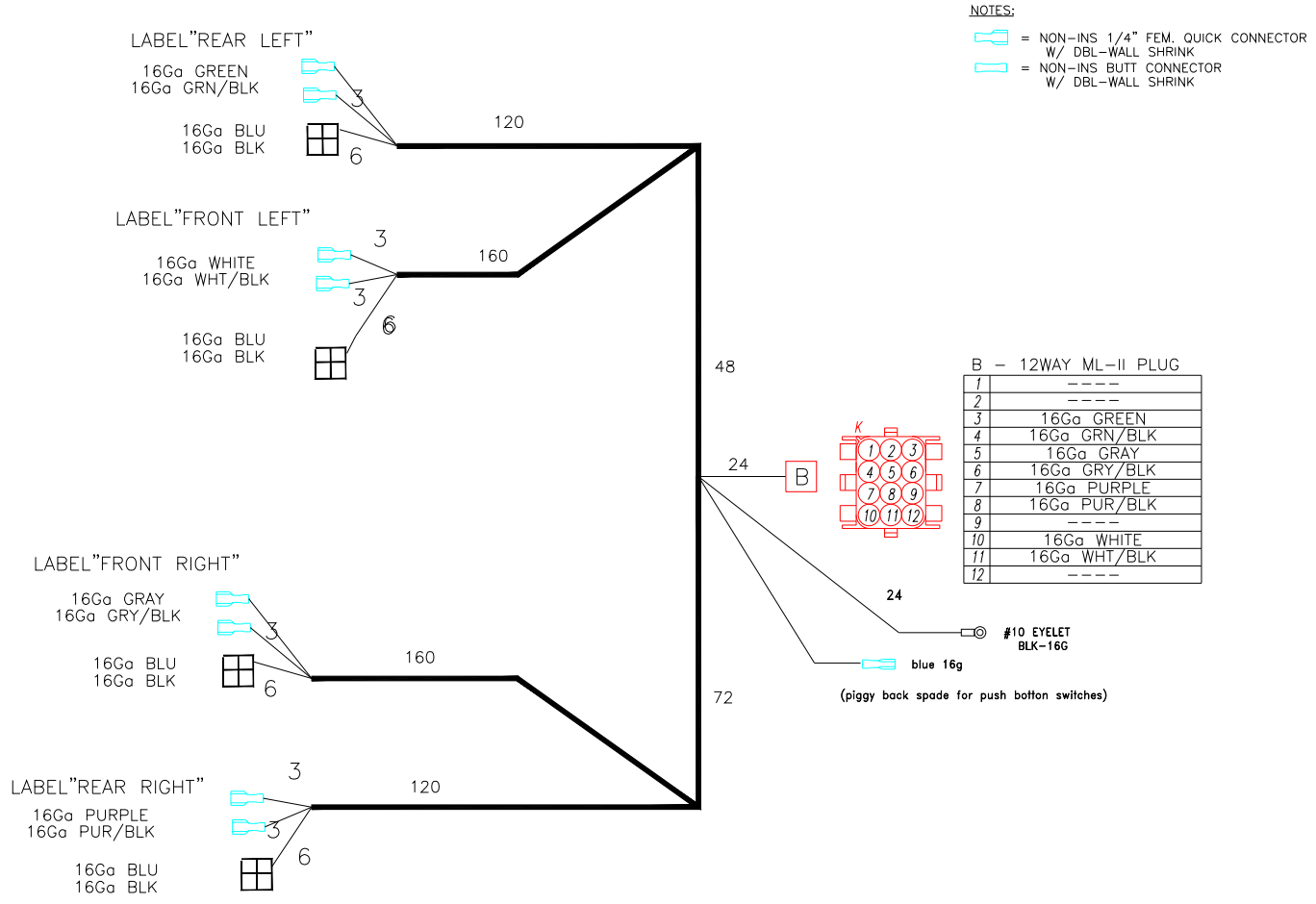
1	----
2	----
3	16Ga GREEN
4	16Ga GRN/BLK
5	16Ga GRAY
6	16Ga GRY/BLK
7	16Ga PURPLE
8	16Ga PUR/BLK
9	----
10	16Ga WHITE
11	16Ga WHT/BLK
12	----

SEAFXQX PT# 6851

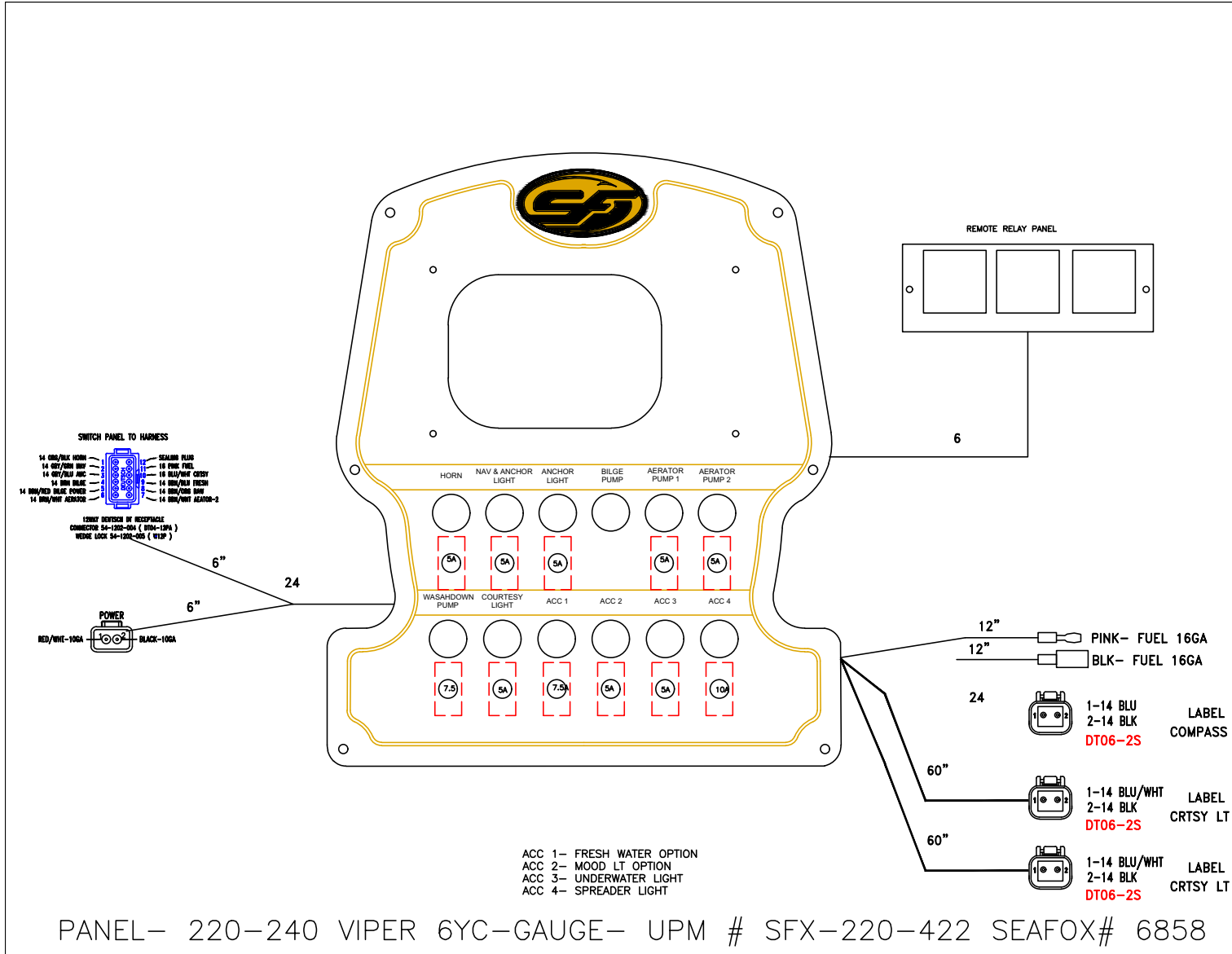
<p>6891 N.W. 73rd COURT Miami, FL 33166 Ph. 305-888-7709 Fax 305-888-7285</p>	SEA FOX SFX-818-016	
	TITLE KICKER 8-SPEAKER STEREO ADAPTER HARNESS	
SIZE	CAGE CODE	DWG NO
SCALE	SHEET	

HARNES STEREO KICKER DECK 2016 (P/N 6852) – OPTIONAL

CUSTOMER SEAFOX BOAT CO. W/O # _____
 PART # SF# 6852-UPM# SFX-489-13 DUE DATE _____
 FILENAME _____ MODEL ALL CENTER CONSOLES
 DESCRIPTION HARNES DECK SPEAKER W/LED



PANEL SWITCH SHROUD (P/N 6858) – OPTIONAL





This Page Intentionally Left Blank



Sea Fox Boat Company, Inc.
2550 Highway 52
Moncks Corner, SC 29461-5024

Telephone: 843-761-6090
www.seafoxboats.com

Ken Cook Co.
Printed in U.S.A.
Rev 0819