



206 COMMANDER

Owner's Manual Supplement

www.SeaFoxBoats.com

SEA FOX BOAT'S DISCLAIMER

The following Owner's Manual is provided for information and educational purposes only and is not intended to offer or provide legal advice or create a contractual relationship between Sea Fox Boat Company and the owner of any Sea Fox brand vessel. Please beware that as a vessel owner you have non-delegable responsibilities regarding the safety, maintenance, fitness, and operation of your vessel and the extent of such responsibilities is ultimately determined by Federal law and regulations, the general maritime law of the United States, the laws and regulations of the states and territories of the United States, or the laws and regulations of the country where you operate your vessel. To fully understand your responsibilities as a vessel owner, and before operating or letting any third-party operate your vessel, we recommend that you consult the services of a qualified lawyer in admiralty and maritime law.

TABLE OF CONTENTS

Introduction	3	Harness Main 180-200-186-206 (P/N 6119).....	13
Specifications	3	Panel Switch Shroud (P/N 6567)	14
Designated Occupant Seating	4	Harness Nav Short	15
Plumbing Schematics	5	Trimtabs Electrical Switch Standard (P/N 2895) – Optional	16
Commander Aft Livewell System	5	Harness Mood Light w/Deutsch (P/N 6128) – Optional	17
Commander Bilge System.....	6	Harness Stereo Infinity Con (P/N 6129) – Optional.....	18
Commander Drains	7	Harness Stereo Infinity Deck (P/N 6130) – Optional.....	19
Commander Fresh Water System	8	Harness Underwater Light w/Deutsch (P/N 6133) – Optional	20
Commander Fuel System	9	Harness Trimtab Electric 20 ft Lenco (P/N 6564) – Optional	21
Commander Forward Livewell System	10	Panel Switch Shroud (P/N 6860) – Optional.....	22
Commander Raw Water System.....	11	Harness Top 186/206 Only (P/N 6920) – Optional	23
Electrical Schematics	12		
Typical 2-Battery Setup in Console.....	12		



This Page Intentionally Left Blank

INTRODUCTION

Congratulations and Welcome Aboard! With so many boat brands to choose from, we want to congratulate you on your decision to choose Sea Fox Boats. For more than 24 years, Sea Fox offers the finest hand-crafted saltwater boats carefully balanced with the build-quality, features, styling and performance for the fairest price. Our passion for boating is evident in every model we make and we appreciate that you've noticed the Sea Fox difference.

We share your love for the moments spent on the water with friends and family, which is why every Sea Fox boat offers a unique blend of fishing/family options, technologies and innovative features. Your choice of a Sea Fox affirms that you have performed your research and compared the value of your model with the competition.

Whether you are new to the boating lifestyle or an old salt, we ask that **you and all other operators** read the owner's manual, this supplement, and all other literature provided with the boat **before** operating the boat or any equipment. We also recommend that all operators enroll in a boating safety course available online - see References and Contact Information in this section for education resources online.

This supplement contains model-specific information not included with the owner's manual. This manual is not intended to be a replacement for specific product literature provided by engine, accessory or other major equipment manufacturers, but rather to supplement that information.

Because of our philosophy of continuous product improvement, this manual serves as a general guide only, so the specifications and illustrations used may not match the equipment on your boat and are intended only as general reference views.

We welcome you to the Sea Fox family and wish you many years of boating enjoyment!

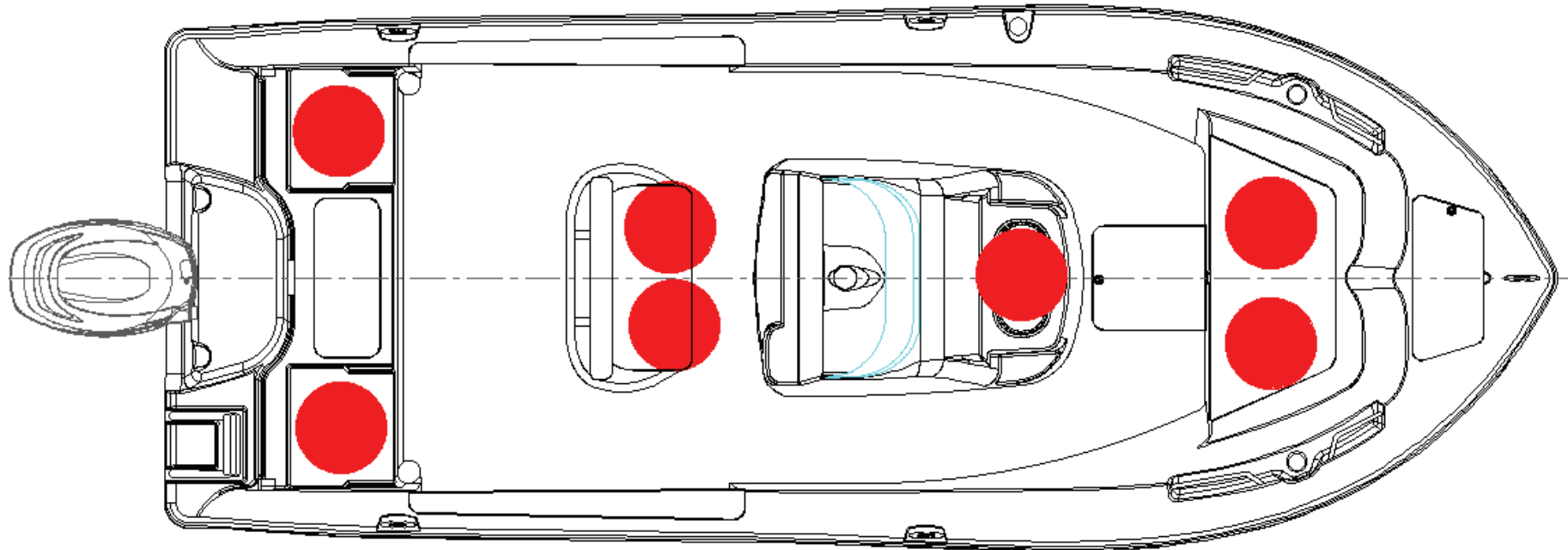
SPECIFICATIONS

Max. Weight Capacity	2000 lbs (907 kg)
Persons	7
Persons Weight	1000 lbs (454 kg)
Max. HP	175 hp (130 kw)
L.O.A.	20' 4" (6.09 m)
Beam	8' 1" (2.59 m)
Draft	14 in. (0.36 m)
Height, Keel to Top (Light Folded)	99 in. (2.51 m)
Bridge Clearance Hard Top	85 in. (2.16 m)
Max. Weight Boat (w/ Fluids, Largest HP)	3828 lbs (1736 kg)
Fuel Tank Capacity	76 gal (288 L)
Freshwater Tank Capacity	6 gal (23 L)
Holding Tank Capacity	N/A



DESIGNATED OCCUPANT SEATING

Be sure all passengers are properly seated in designated seating positions and not riding on the bow, bow pulpit, deck, gunwale or rear sun deck while underway. Passengers must use hand-holds and use caution when riding in the bow. Move to the aft passenger seats during rough water operation or if visibility is restricted.

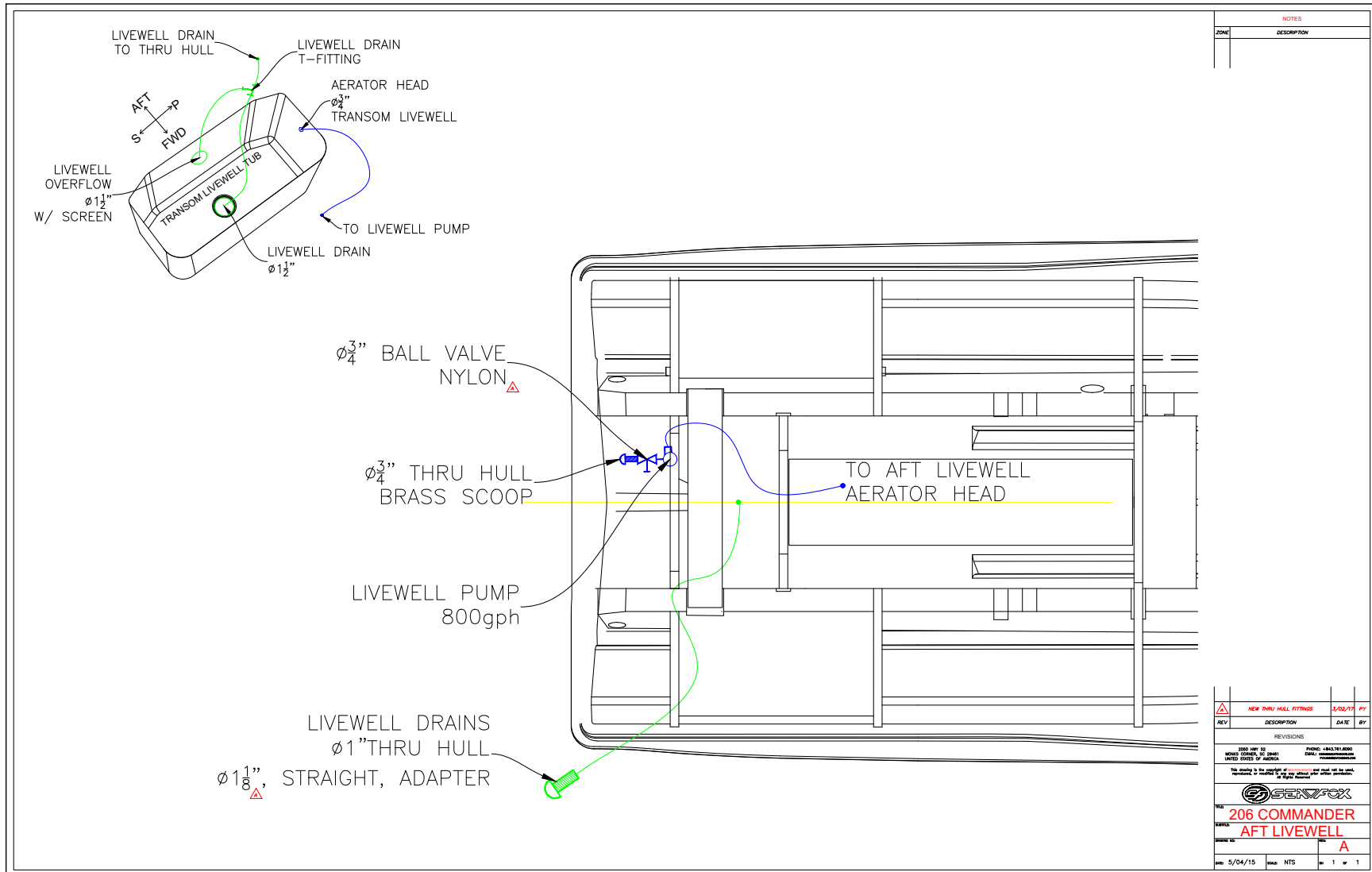


● = Seat position

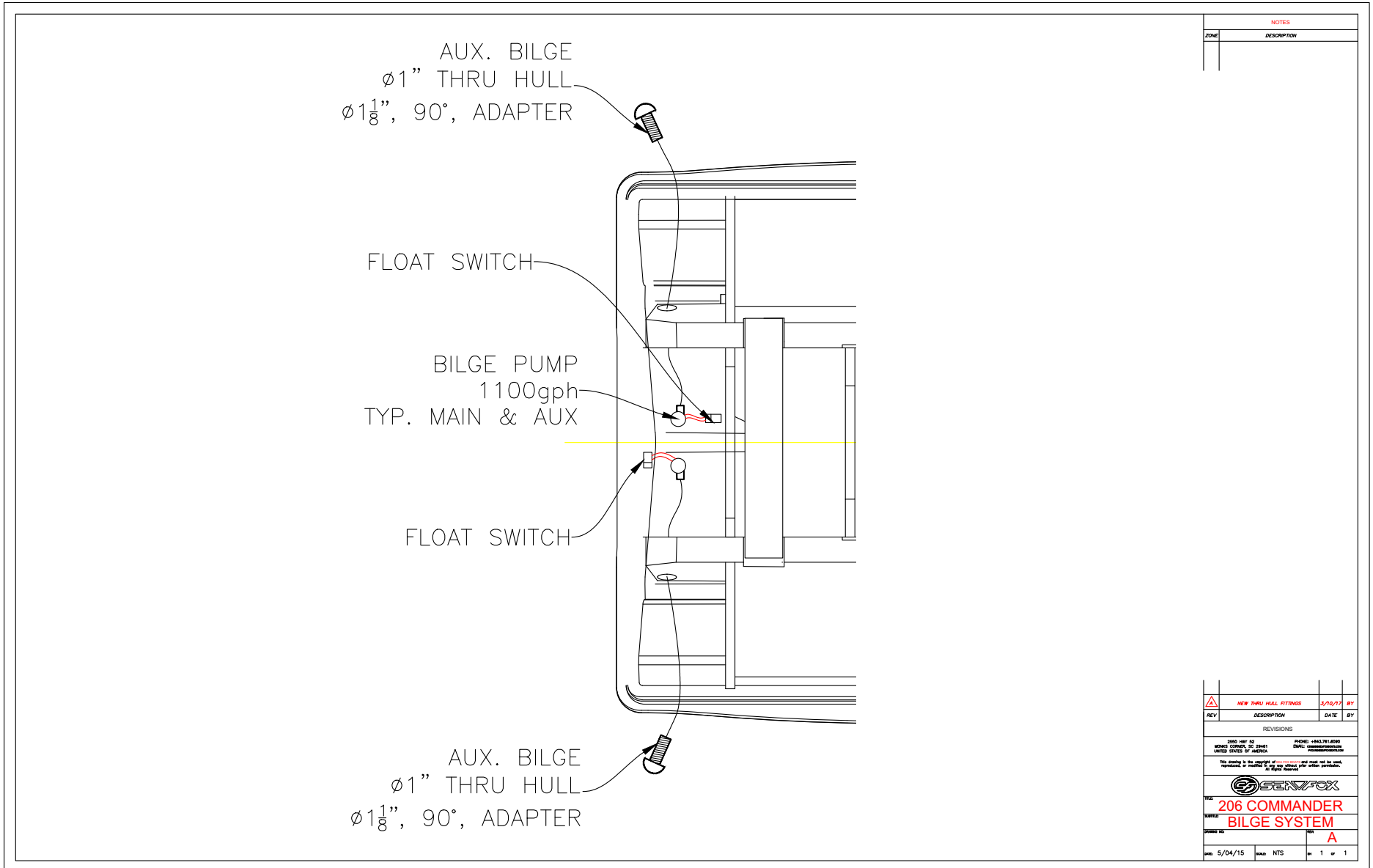
SFOX-0017

PLUMBING SCHEMATICS

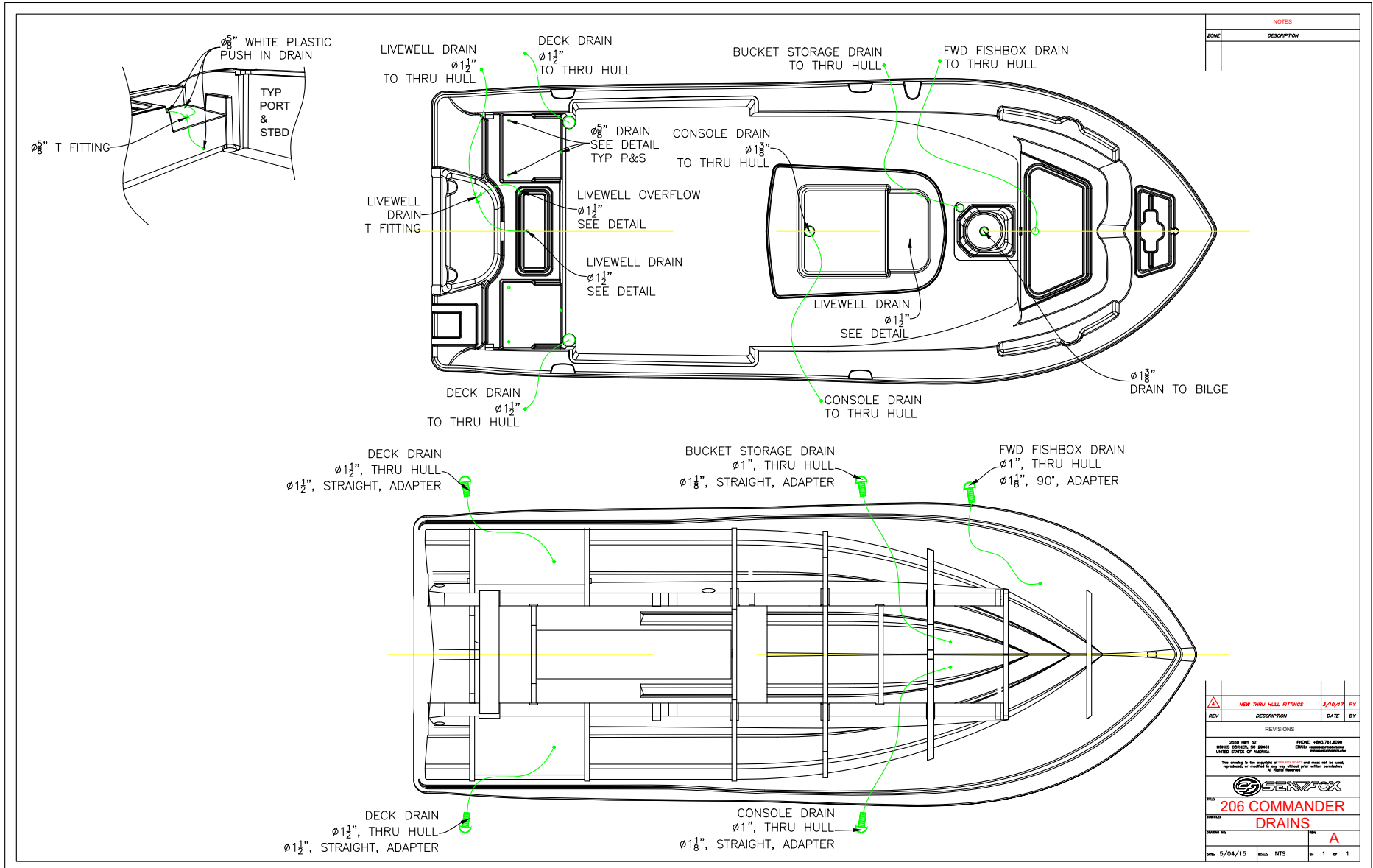
COMMANDER AFT LIVEWELL SYSTEM



COMMANDER BILGE SYSTEM



COMMANDER DRAINS



NOTES	
ZONE	DESCRIPTION

REV	DESCRIPTION	DATE	BY

REVISIONS

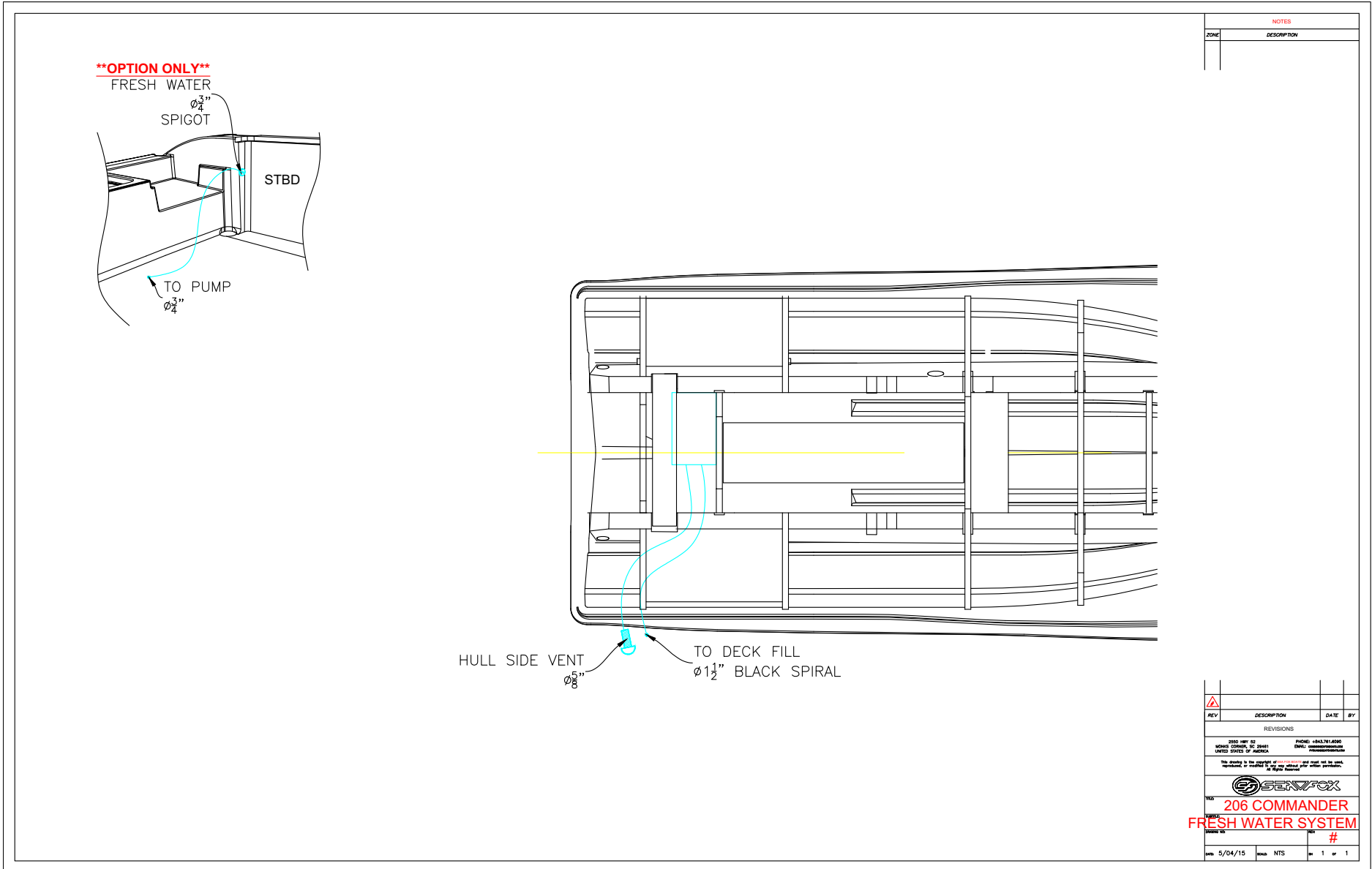
3500 HWY 52 PHONE: +863.761.6000
 LORAIN COAST, FL 32081 EMAIL: SALES@SEAFOX.COM
 UNITED STATES OF AMERICA

SEAFOX

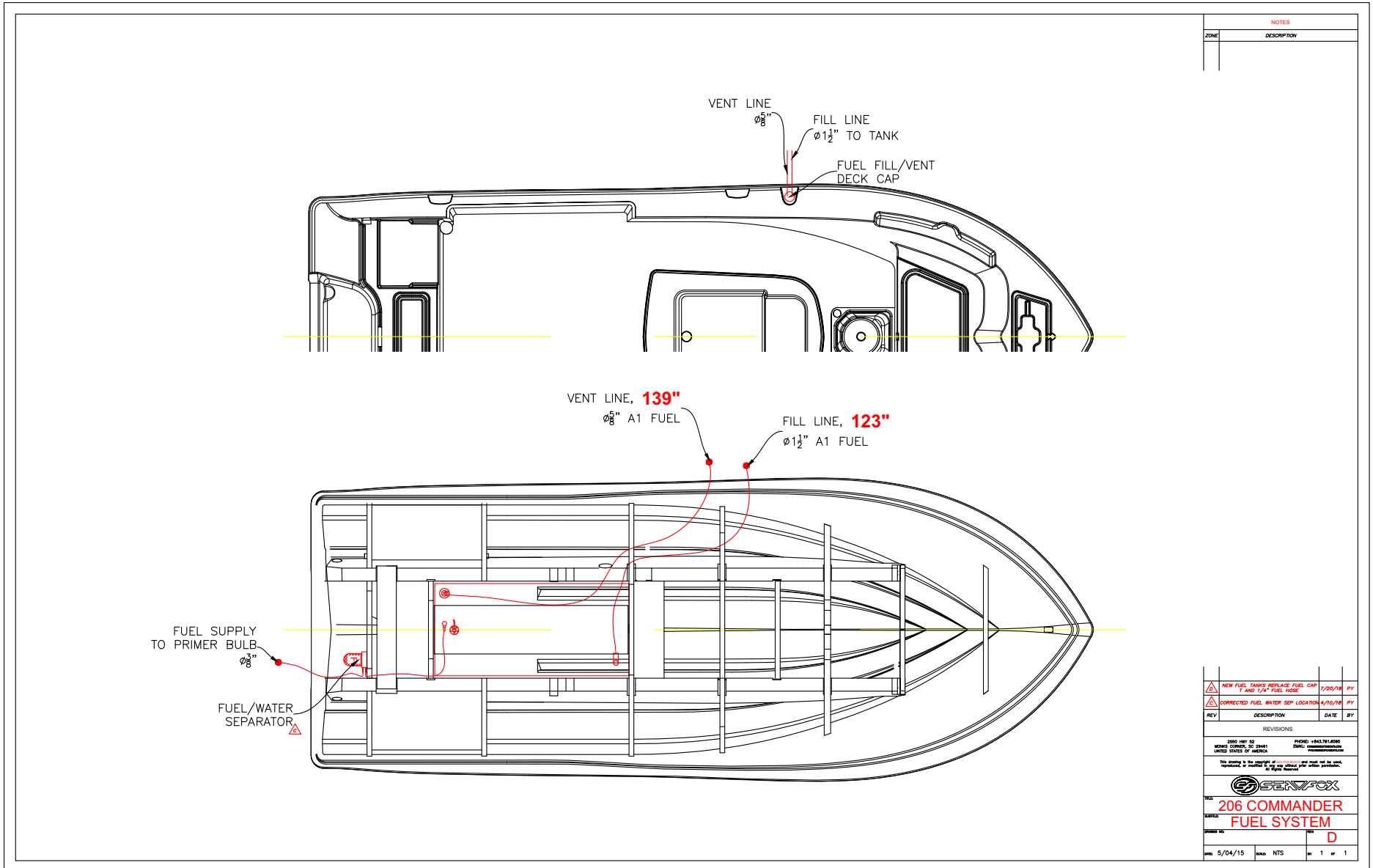
206 COMMANDER DRAINS

DATE: 5/04/15 SIZE: NTS REV: 1 OF 1

COMMANDER FRESH WATER SYSTEM



COMMANDER FUEL SYSTEM



NOTES	
ZONE	DESCRIPTION

REV	DESCRIPTION	DATE	BY

REVISIONS

2000 HWY 52 PHONE: +843.761.6800
 MONROE CORP., SC 29615 EMAIL: commander@seafox.com
 UNITED STATES OF AMERICA

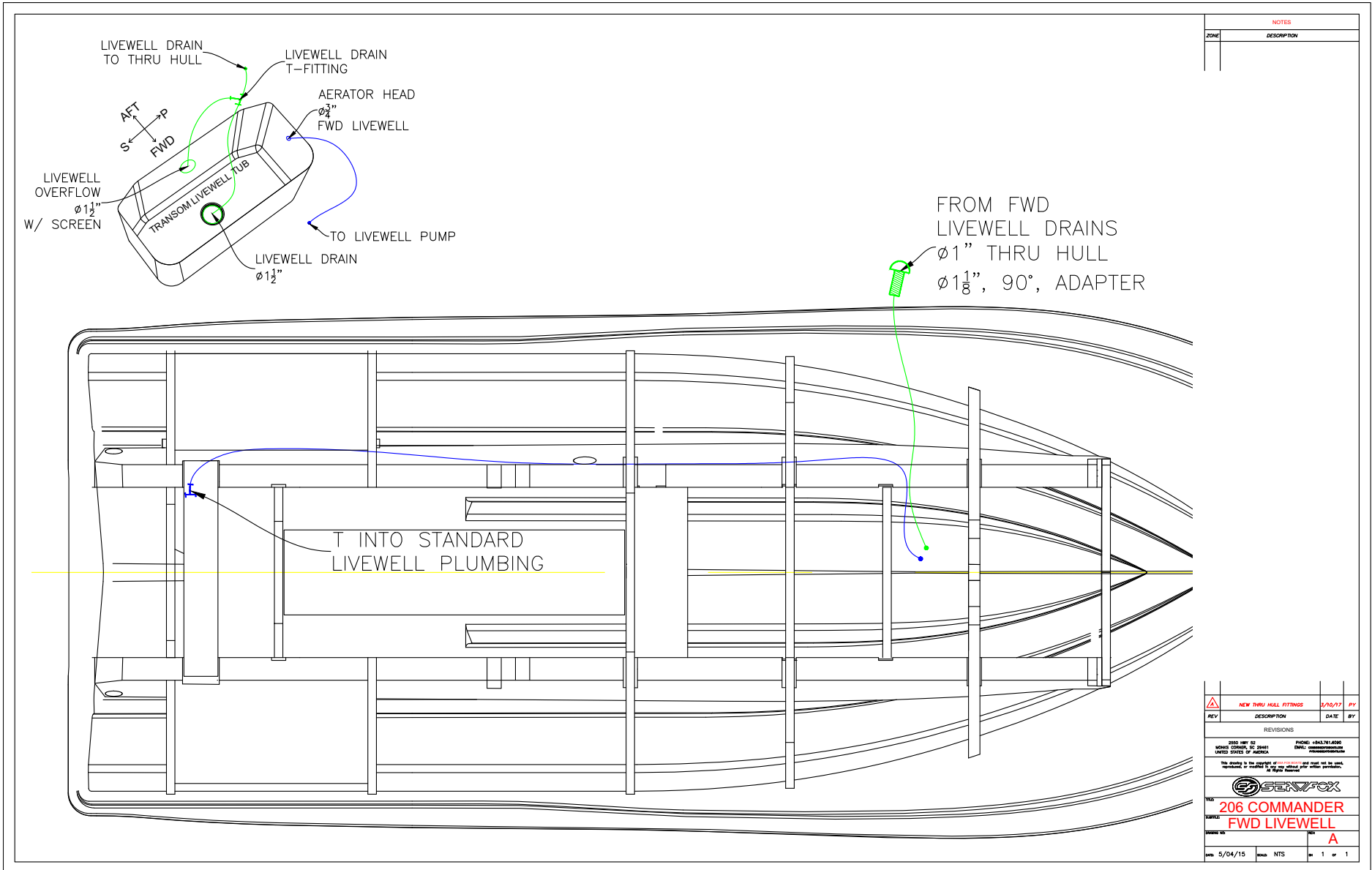
This drawing is the property of SeaFox and must not be used, reproduced or modified in any way without prior written permission. All Rights Reserved.

TITLE: **206 COMMANDER FUEL SYSTEM**

DRAWN BY: **D**

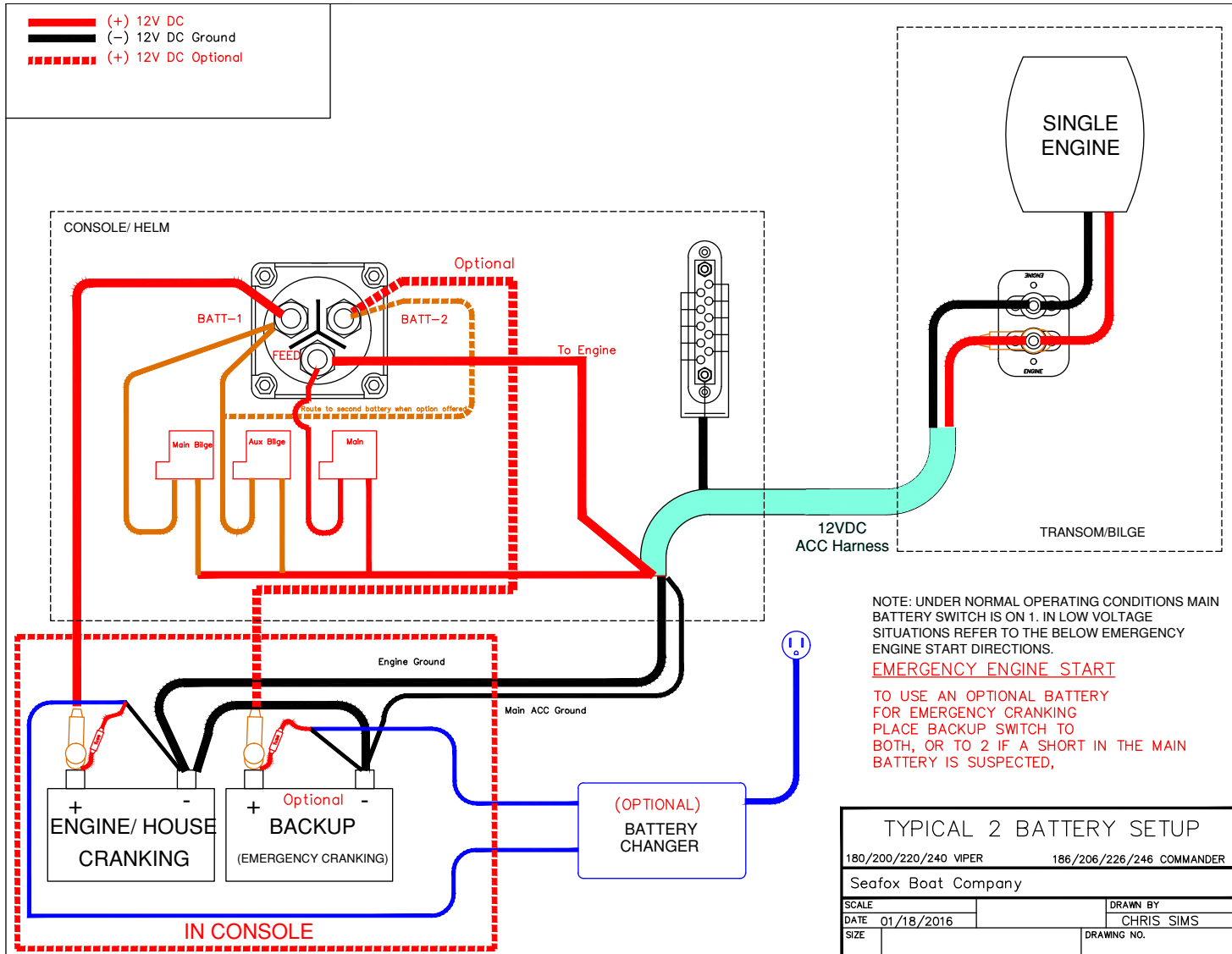
DATE: 5/04/15 SCALE: INTS SHEET: 1 OF 1

COMMANDER FORWARD LIVEWELL SYSTEM

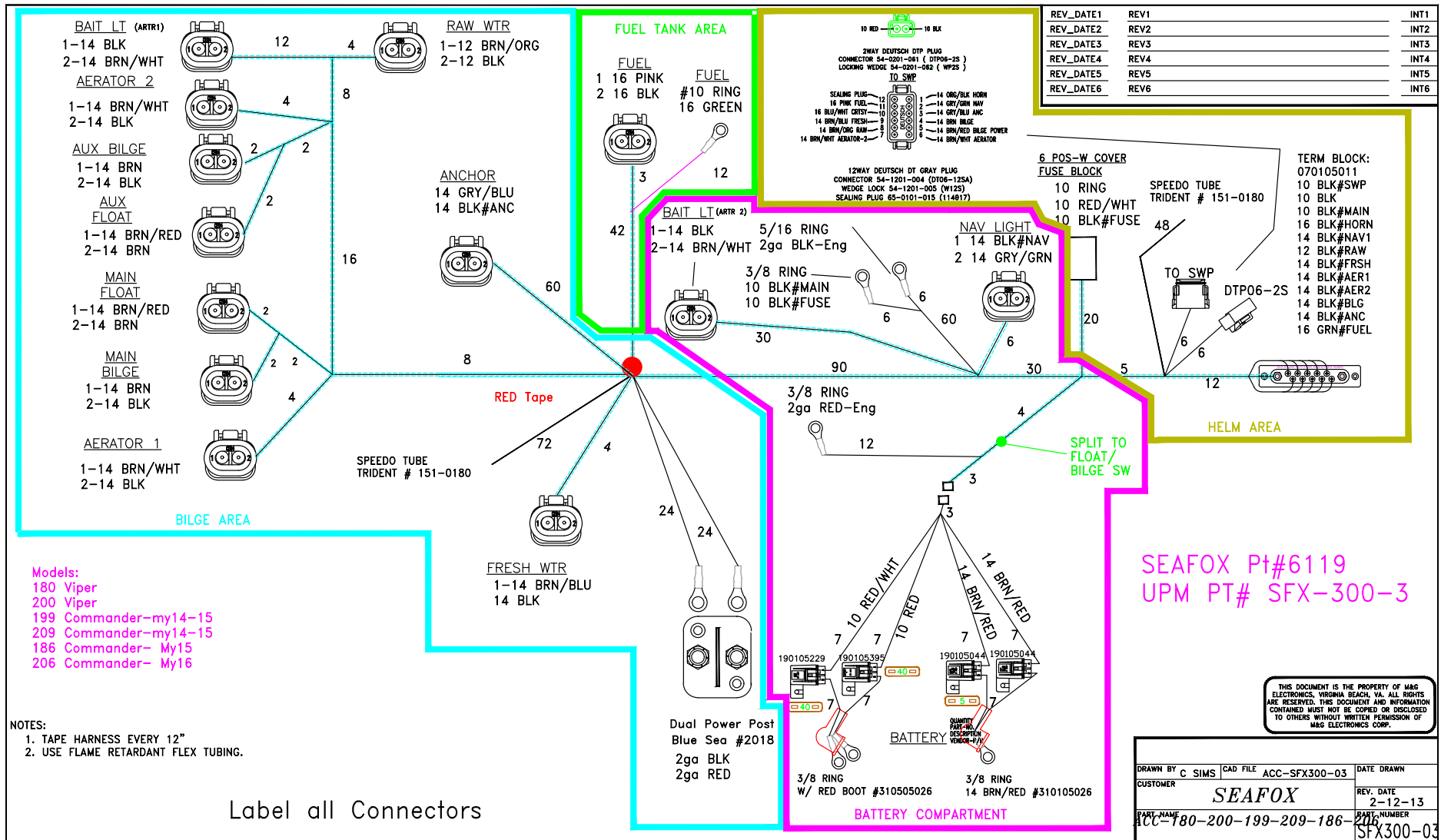


ELECTRICAL SCHEMATICS

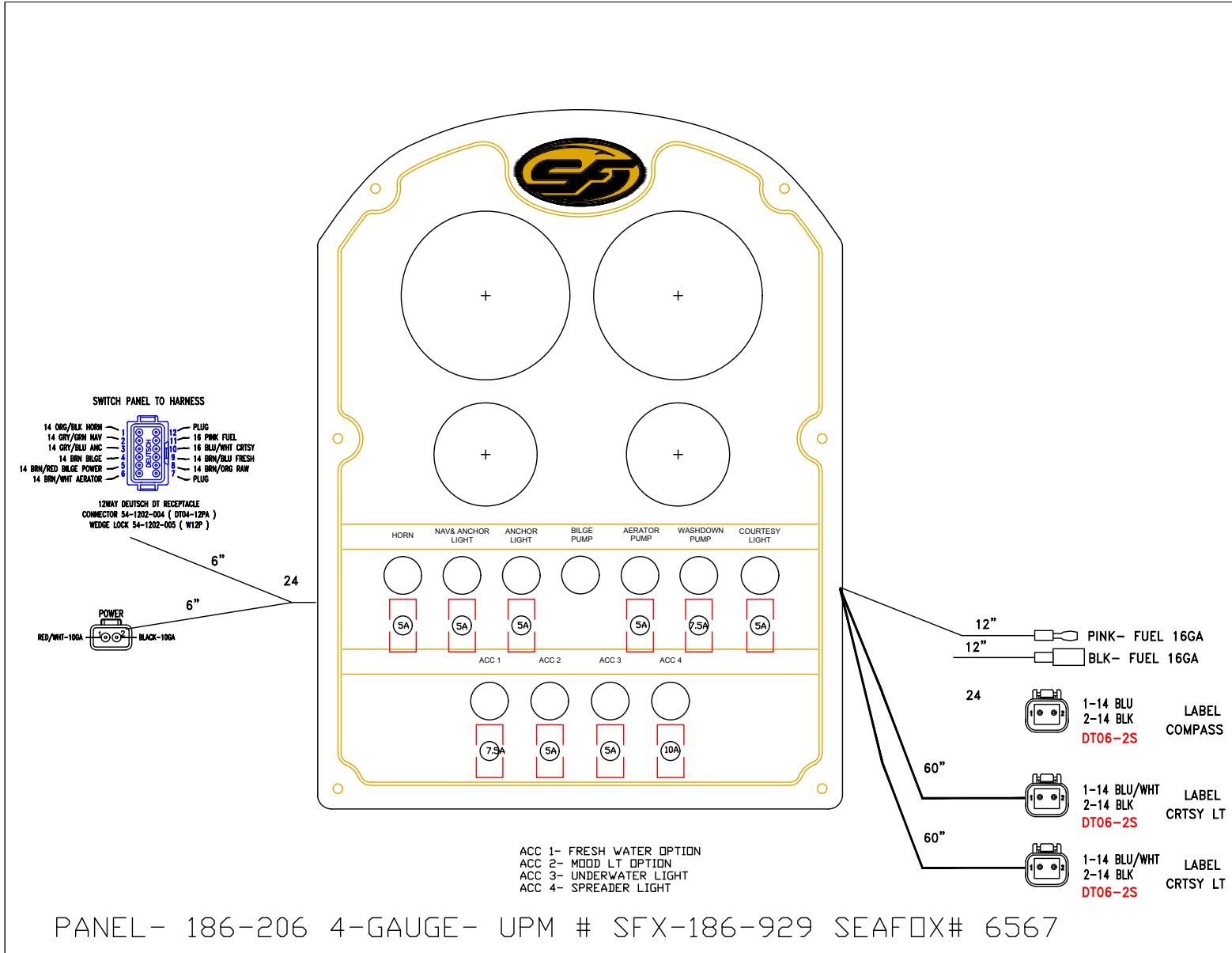
TYPICAL 2-BATTERY SETUP IN CONSOLE



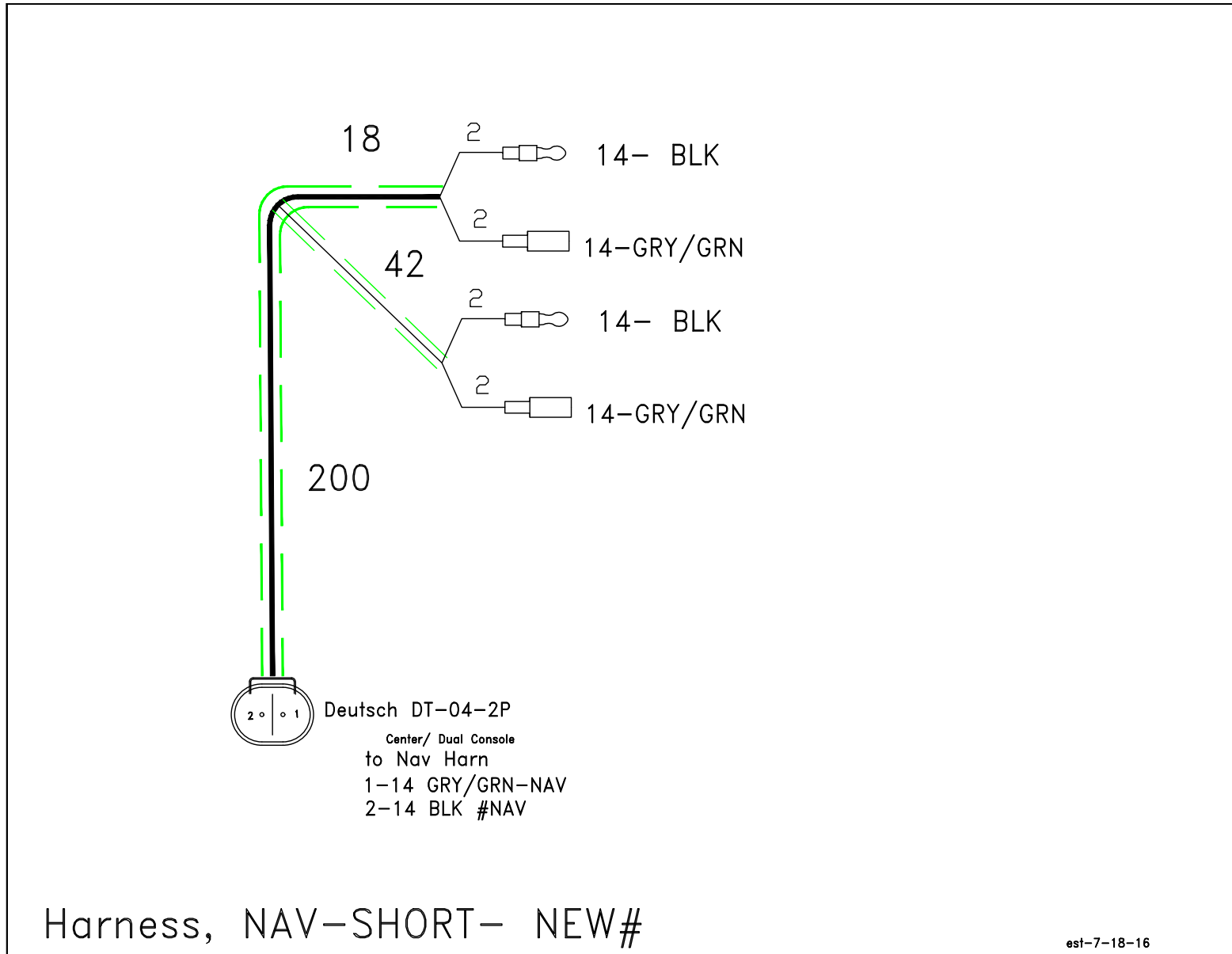
HARNES MAIN 180-200-186-206 (P/N 6119)



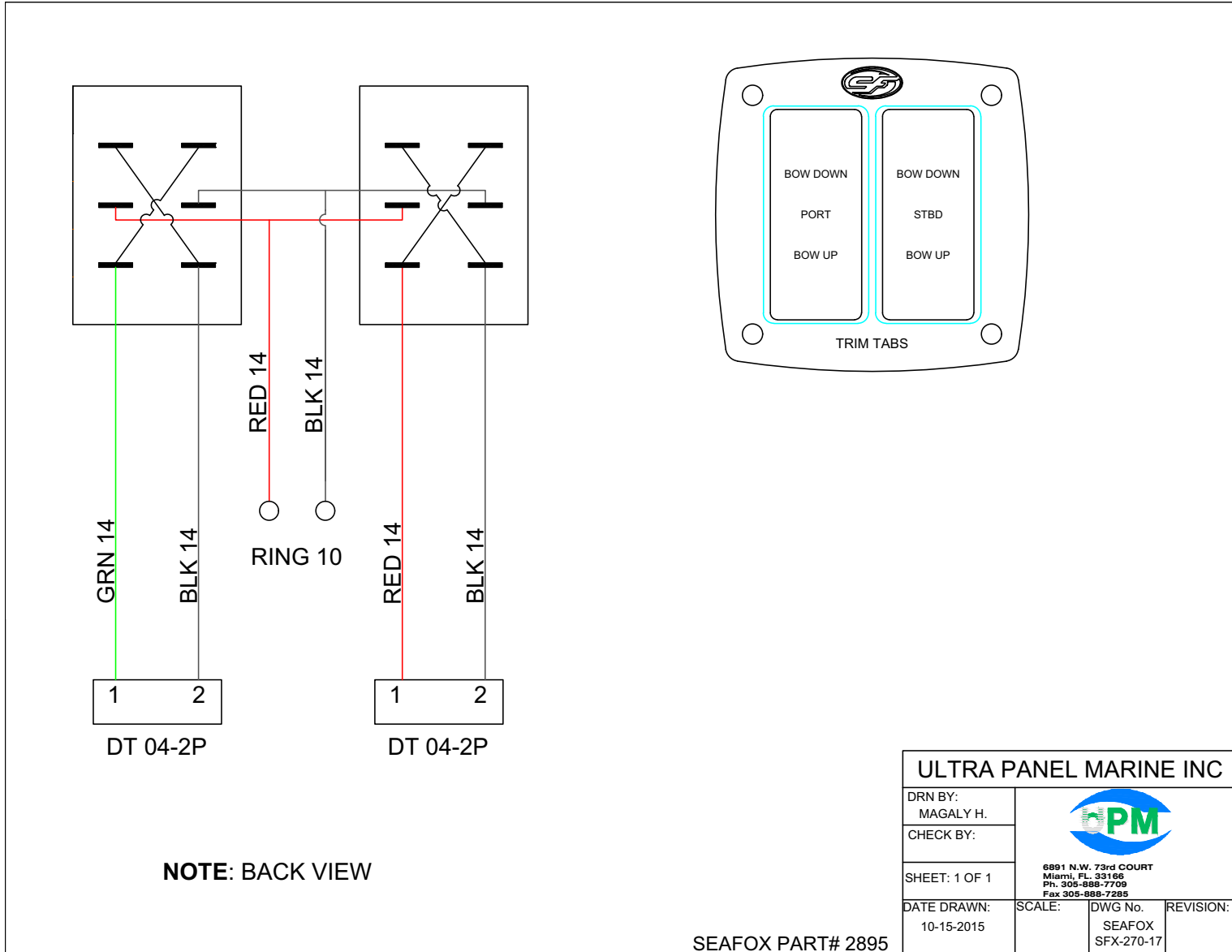
PANEL SWITCH SHROUD (P/N 6567)



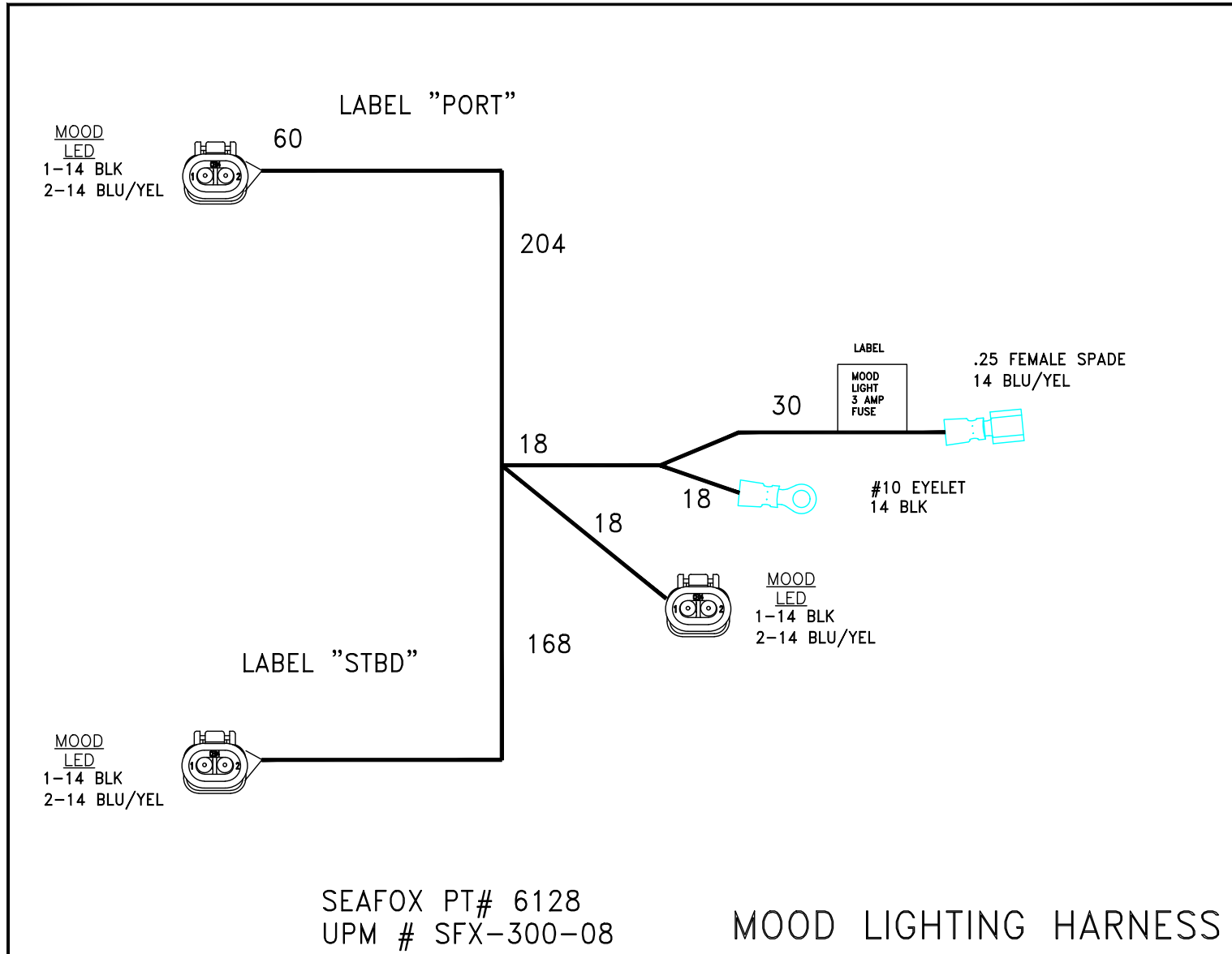
HARNES NAV SHORT



TRIMTABS ELECTRICAL SWITCH STANDARD (P/N 2895) – OPTIONAL



HARNESS MOOD LIGHT W/DEUTSCH (P/N 6128) – OPTIONAL



HARNESS STEREO INFINITY CON (P/N 6129) – OPTIONAL

CUSTOMER SEAFOX BOAT CO.
 PART # 6129 UPM# SFX-300-09
 FILENAME _____

W/O # _____
 DUE DATE _____
 MODEL ALL MODELS
 DESCRIPTION HARNESS STEREO INFINITY/JENSEN

- NOTES:
 (1) SPLICE CONNECTION IS SOLDER DIPPED AND INSULATED WITH ADHESIVE-LINED HEAT-SHRINK
 (2) TERMINAL LEGEND:
 = ADHESIVE-LINED CRIMP CONNECTOR
 = NON-INS 1/4" FEM. QUICK CONNECTOR W/ DBL-WALL SHRINK
 = NON-INS 0.205" FEM. QUICK CONNECTOR W/ DBL-WALL SHRINK
 = #8 SNAP SPADE W/ DBL-WALL SHRINK
 = 0.156 NON-INS MALE W/ BLUE INSULATOR
 = 0.156 NON-INS FEMALE W/ BLUE INSULATOR
 = RING TERMINAL W/ ADHESIVE-LINED SHRINK OR SOLDER DIPPED AND ADHESIVE-LINED SHRUNK
 (3) " " = TAGGING TEXT

ATTACH THERMAL LABEL STERJBL.QDF TO THIS LEAD AS SHOWN!

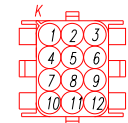
MAXXIMA SOFT-WIRE
 DIPOLE ANTENNA
 #: CSA-MAR-01

Label only
 no fuse holder

ATTACH THERMAL LABEL STEREOC.QDF TO THIS LEAD AS SHOWN!
 ACCESSORY FUSEBLOCK
 14Ga RED & 14Ga YELLOW/RED
 #10 3"
 ACCESSORY FUSEBLOCK
 14Ga YELLOW (TAG "STERO")
 #10 3"

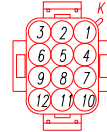
A - 12WAY ML-II CAP

1	14Ga YELLOW
2	BLANK
3	16Ga GREEN
4	16Ga GRN/BLK
5	16Ga GRAY
6	16Ga GRY/BLK
7	16Ga PURPLE
8	16Ga PUR/BLK
9	14Ga RED
10	16Ga WHITE
11	16Ga WHT/BLK
12	BLANK



B - 12WAY ML-II PLUG


1	----
2	----
3	16Ga GREEN
4	16Ga GRN/BLK
5	16Ga GRAY
6	16Ga GRY/BLK
7	16Ga PURPLE
8	16Ga PUR/BLK
9	----
10	16Ga WHITE
11	16Ga WHT/BLK
12	----

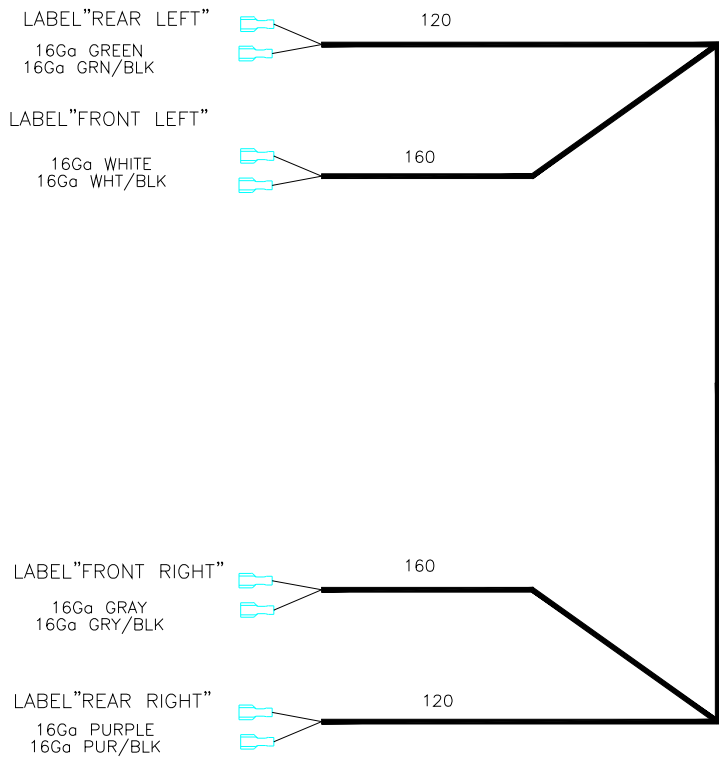


HARNES STEREO INFINITY DECK (P/N 6130) – OPTIONAL

CUSTOMER SEAFOX BOAT CO. W/O # _____
 PART # 6130 UPM# SFX-300-04 DUE DATE _____
 FILENAME _____ MODEL ALL MODELS
 DESCRIPTION HARNES DECK INFINTY STEREO

NOTES:

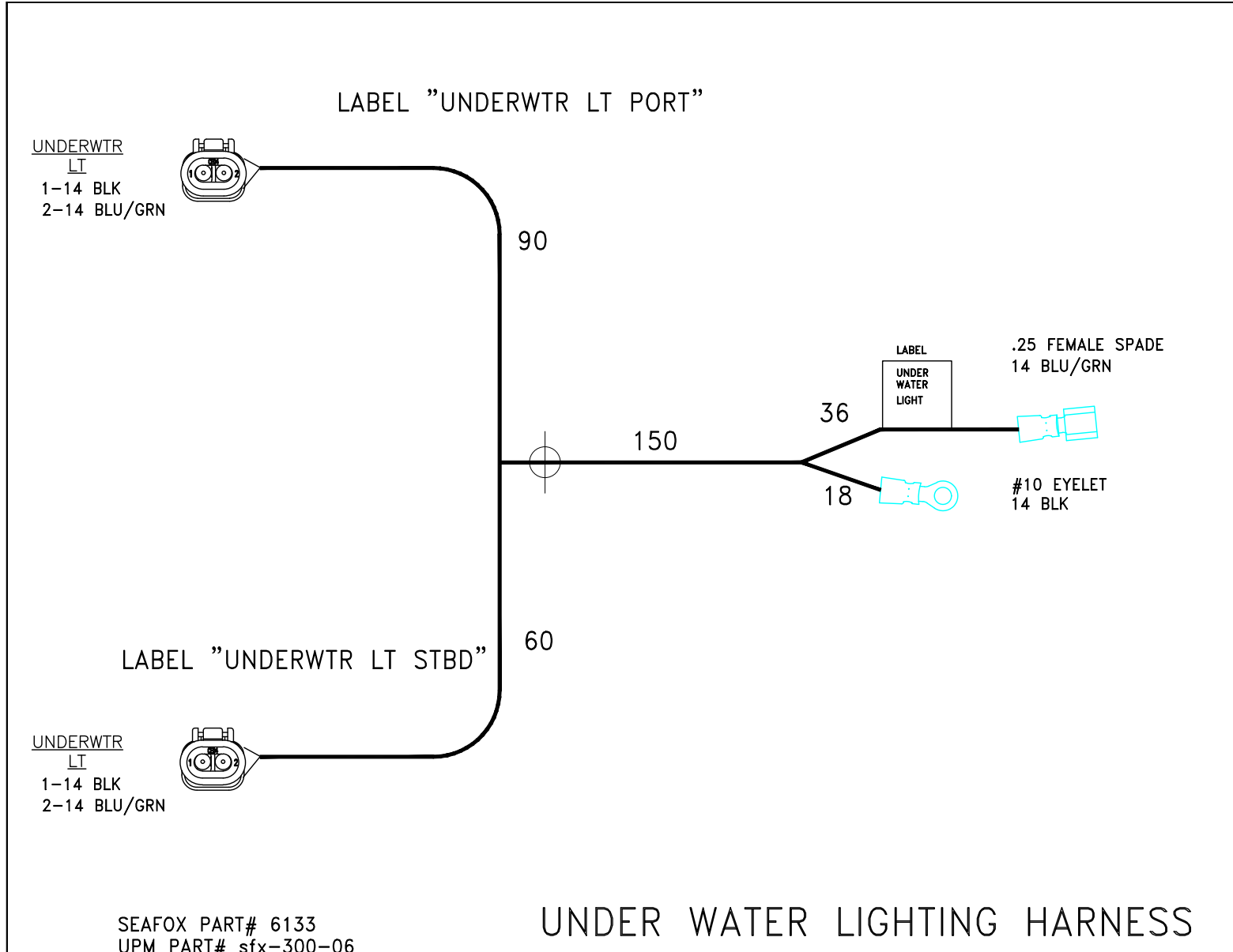
 = NON-INS 1/4" FEM. QUICK CONNECTOR
 W/ DBL-WALL SHRINK



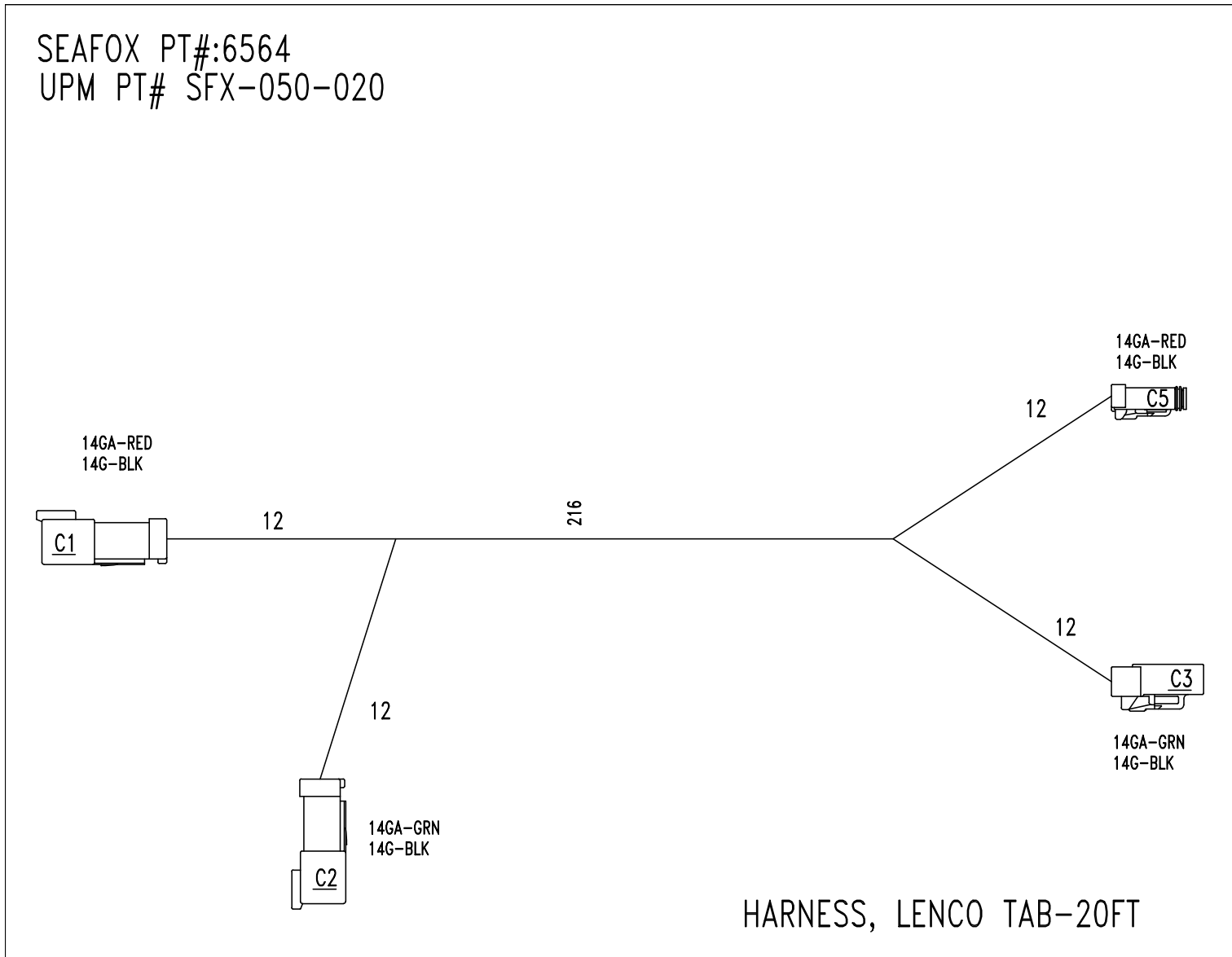
B - 12WAY ML-II PLUG

1	----
2	----
3	16Ga GREEN
4	16Ga GRN/BLK
5	16Ga GRAY
6	16Ga GRY/BLK
7	16Ga PURPLE
8	16Ga PUR/BLK
9	----
10	16Ga WHITE
11	16Ga WHT/BLK
12	----

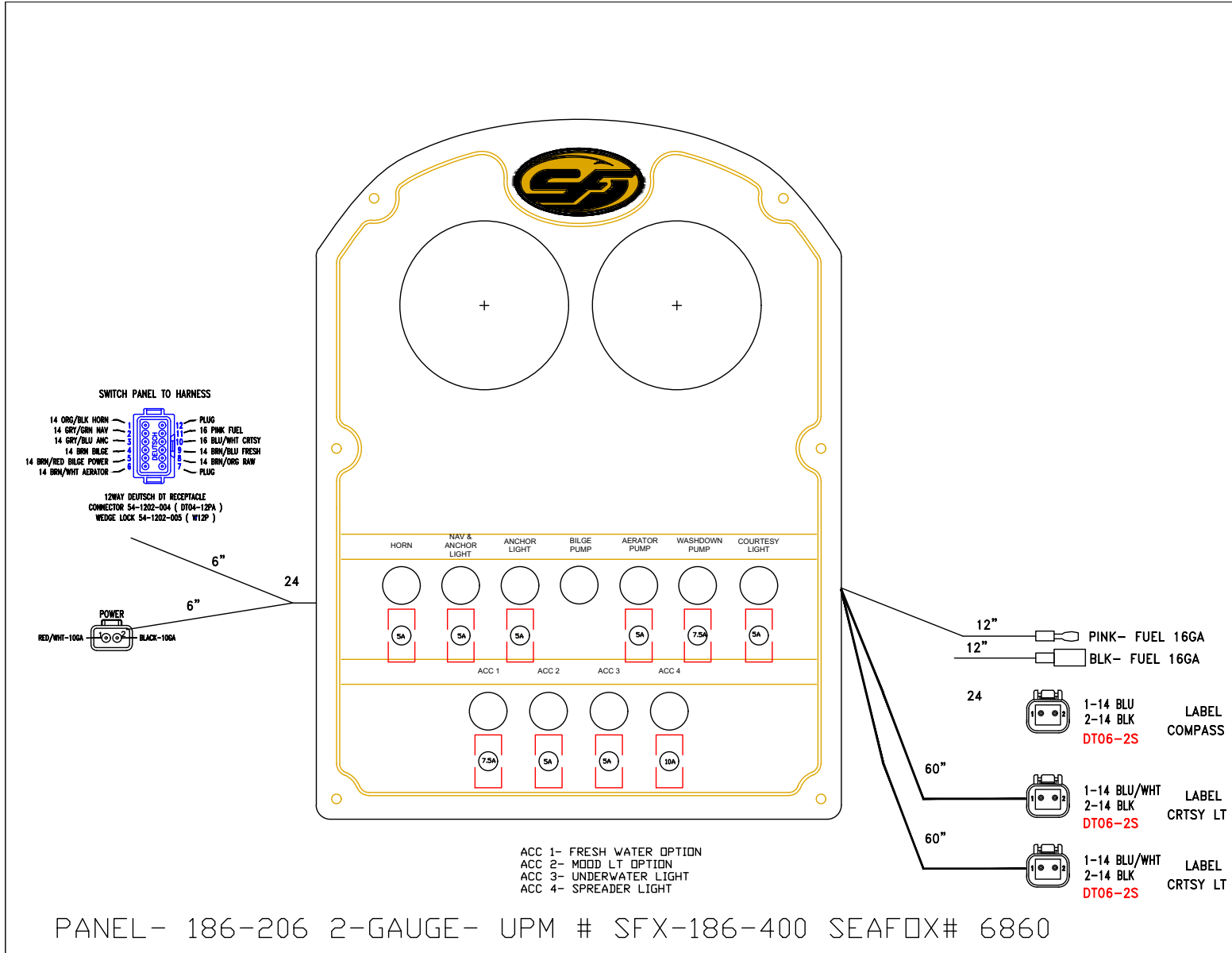
HARNES UNDERWATER LIGHT W/DEUTSCH (P/N 6133) – OPTIONAL



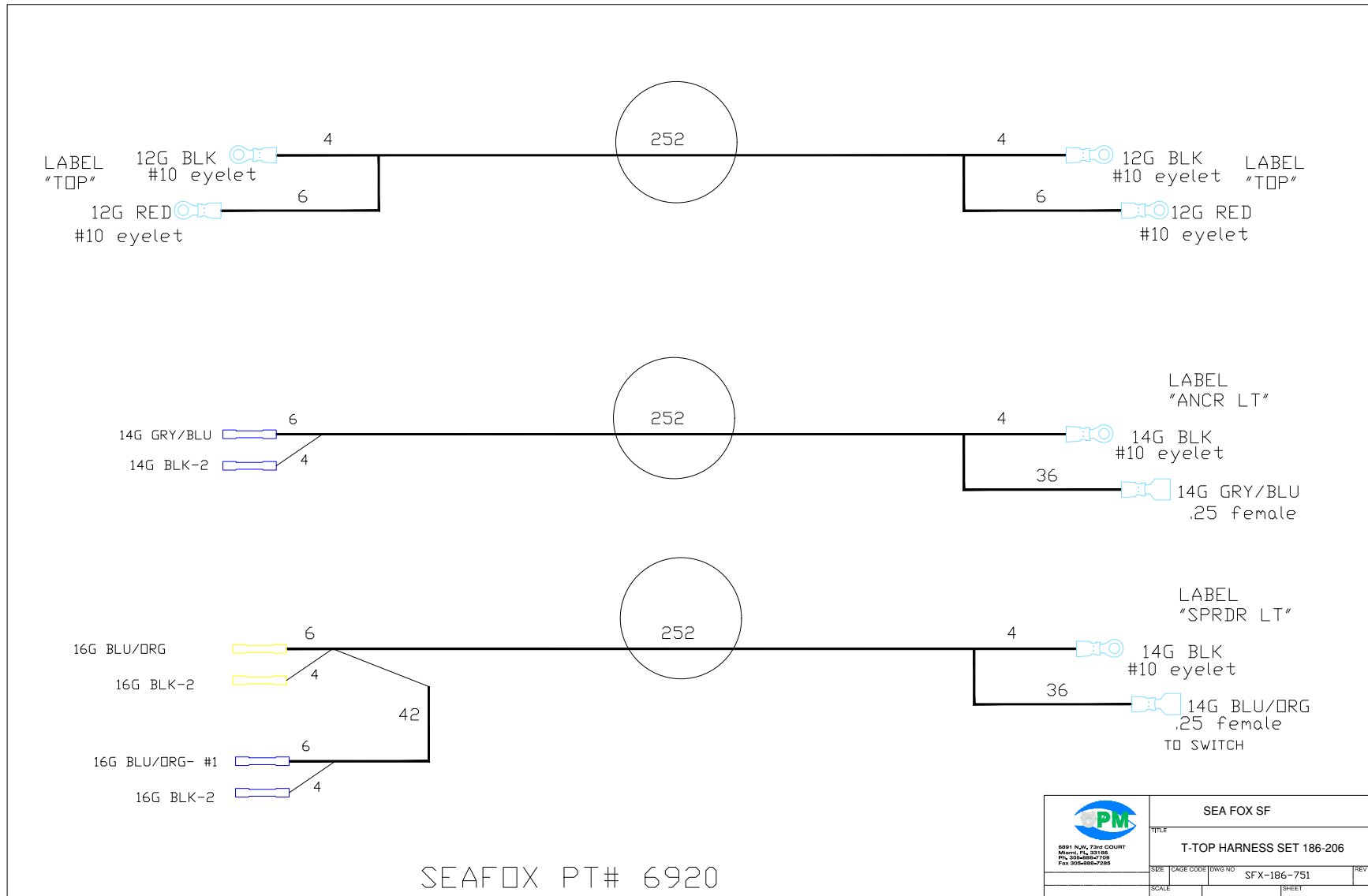
HARNESSTRIMTAB ELECTRIC 20 FT Lenco (P/N 6564) – OPTIONAL



PANEL SWITCH SHROUD (P/N 6860) – OPTIONAL



HARNESS TOP 186/206 ONLY (P/N 6920) – OPTIONAL





This Page Intentionally Left Blank

This Page Intentionally Left Blank



This Page Intentionally Left Blank

This Page Intentionally Left Blank



This Page Intentionally Left Blank



Sea Fox Boat Company, Inc.
2550 Highway 52
Moncks Corner, SC 29461-5024

Telephone: 843-761-6090
www.seafoxboats.com

Ken Cook Co.
Printed in U.S.A.
Rev 0819