

**TEST CONDITIONS**

Test Date	9/27/2022
Test Conductor	Anton Francois + 2
Boat Weight as Tested (lbs)	14450
Air Temperature (degrees F)	72
Elevation (ft)	0
Sea State	Calm
Wind Velocity range (mph)	5
Fresh/Salt Water	Brackish
Fuel Level at Testing (gal)	50

**ENGINE SPECIFICATIONS**

Number of Engines	2
Engine	L6SC Verado
Horsepower	400
Cylinders	6
Drive or gear model and ratio	HD Camber 1.75
Mounting Bolt Hole	5,5
Engine Height (in)	1.0,1.0
Engine Setback (in)	1.0,1.0
Engine Length (in)	30,30

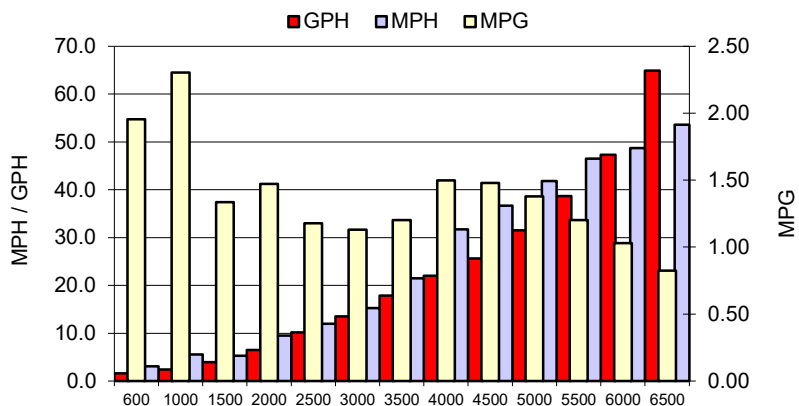
**PERFORMANCE SUMMARY**

Top Speed (mph @ rpm)	56.4	6822
Acceleration 0 - 20 mph (seconds)	4.96	
Acceleration 0 - 30 mph (seconds)	7.46	

**PROPELLER SPECIFICATIONS**

Mercury Name	Revolution 4
Material	Stainless Steel
Pitch	17.0,17.0
Number of Blades	4

**PERFORMANCE CURVE**



**BOAT SPECIFICATIONS**

Region/s sold	
Manufacturer	seafox boats
Website	
Boat Model	328 commander
Boat Type	Offshore Saltwater
Material	Material
Length (ft)	32
Beam (ft)	10.8
Max hp Capacity	0
Fuel Tank Capacity (gal)	313
Steering Type	Joystick
Dry Boat Weight (lbs)	11745

**PERFORMANCE DATA**

RPM	SPEED	FUEL CONSUMPTION	FUEL CONSUMPTION	RANGE
RANGE	MPH	GPH	MPG	MILES
600	3.1	1.6	1.95	612
1000	5.6	2.4	2.30	721
1500	5.3	4.0	1.33	418
2000	9.5	6.5	1.47	461
2500	12.0	10.2	1.18	369
3000	15.3	13.5	1.13	353
3500	21.5	17.8	1.20	376
4000	31.7	22.0	1.50	469
4500	36.7	25.6	1.48	463
5000	41.8	31.5	1.38	431
5500	46.5	38.7	1.20	376
6000	48.7	47.3	1.03	322
6500	53.6	64.9	0.83	258
6800	56.4	73.1	0.77	240