



Owner's Manual Supplement

www.SeaFoxBoats.com

SEA FOX BOAT'S DISCLAIMER

The following Owner's Manual is provided for information and educational purposes only and is not intended to offer or provide legal advice or create a contractual relationship between Sea Fox Boat Company and the owner of any Sea Fox brand vessel. Please beware that as a vessel owner you have non-delegable responsibilities regarding the safety, maintenance, fitness, and operation of your vessel and the extent of such responsibilities is ultimately determined by Federal law and regulations, the general maritime law of the United States, the laws and regulations of the states and territories of the United States, or the laws and regulations of the country where you operate your vessel. To fully understand your responsibilities as a vessel owner, and before operating or letting any third-party operate your vessel, we recommend that you consult the services of a qualified lawyer in admiralty and maritime law.

TABLE OF CONTENTS

Introduction	3	Harness Windlass Panel	19
Specifications	3	Harness Panel Kit	20
Designated Occupant Seating	4	Control Box.	21
Plumbing Schematics	5	Panel Battery Breaker.	22
Commander Drains	5	Harness ACC w/ Len/ORB Deutsch (P/N 6979)	23
Commander Drains (Continued)	6	Harness Battery Cable Set EPS (P/N 6980)	24
Commander Livewell A System.	7	Harness Deck (P/N 6985)	25
Commander Livewell B System.	8	U Panel Switch/Harness Ultima (P/N 6997)	26
Commander Air Conditioning System.	9	Panel Box Junction Console (P/N 7137).	27
Commander Fresh Water System	10	Panel Breaker Con w/ Battery Switch (P/N 7138)	28
Commander Fuel System	11	Panel Switch Deutsch (P/N 7139).	29
Commander Bilge System.	12	Panel Switch Key/Remote Battery Helm (P/N 7140)	30
Commander Mister System.	13	Breaker Kit - 60-Amp EPS (P/N 7378)	31
Commander Raw Water System.	14	Head Panel Switch ORB (P/N 6136) – Optional	32
Commander Waste System.	15	Head Panel Switch ORB (P/N 6870).	33
Electrical Schematics	16	Cable AC Set (P/N 7141) – Optional.	34
Twin Engine with 4-Battery Setup and Charger	16	Breaker Assembly - 80-Amp Helm Master (P/N 7379) – Optional	35
Harness & Panel Cooler Slide	17		
Harness JL Stereo	18		



This Page Intentionally Left Blank

INTRODUCTION

Congratulations and Welcome Aboard! With so many boat brands to choose from, we want to congratulate you on your decision to choose Sea Fox Boats. For more than 24 years, Sea Fox offers the finest hand-crafted saltwater boats carefully balanced with the build-quality, features, styling and performance for the fairest price. Our passion for boating is evident in every model we make and we appreciate that you've noticed the Sea Fox difference.

We share your love for the moments spent on the water with friends and family, which is why every Sea Fox boat offers a unique blend of fishing/family options, technologies and innovative features. Your choice of a Sea Fox affirms that you have performed your research and compared the value of your model with the competition.

Whether you are new to the boating lifestyle or an old salt, we ask that **you and all other operators** read the owner's manual, this supplement, and all other literature provided with the boat **before** operating the boat or any equipment. We also recommend that all operators enroll in a boating safety course available online - see References and Contact Information in this section for education resources online.

This supplement contains model-specific information not included with the owner's manual. This manual is not intended to be a replacement for specific product literature provided by engine, accessory or other major equipment manufacturers, but rather to supplement that information.

Because of our philosophy of continuous product improvement, this manual serves as a general guide only, so the specifications and illustrations used may not match the equipment on your boat and are intended only as general reference views.

We welcome you to the Sea Fox family and wish you many years of boating enjoyment!

SPECIFICATIONS

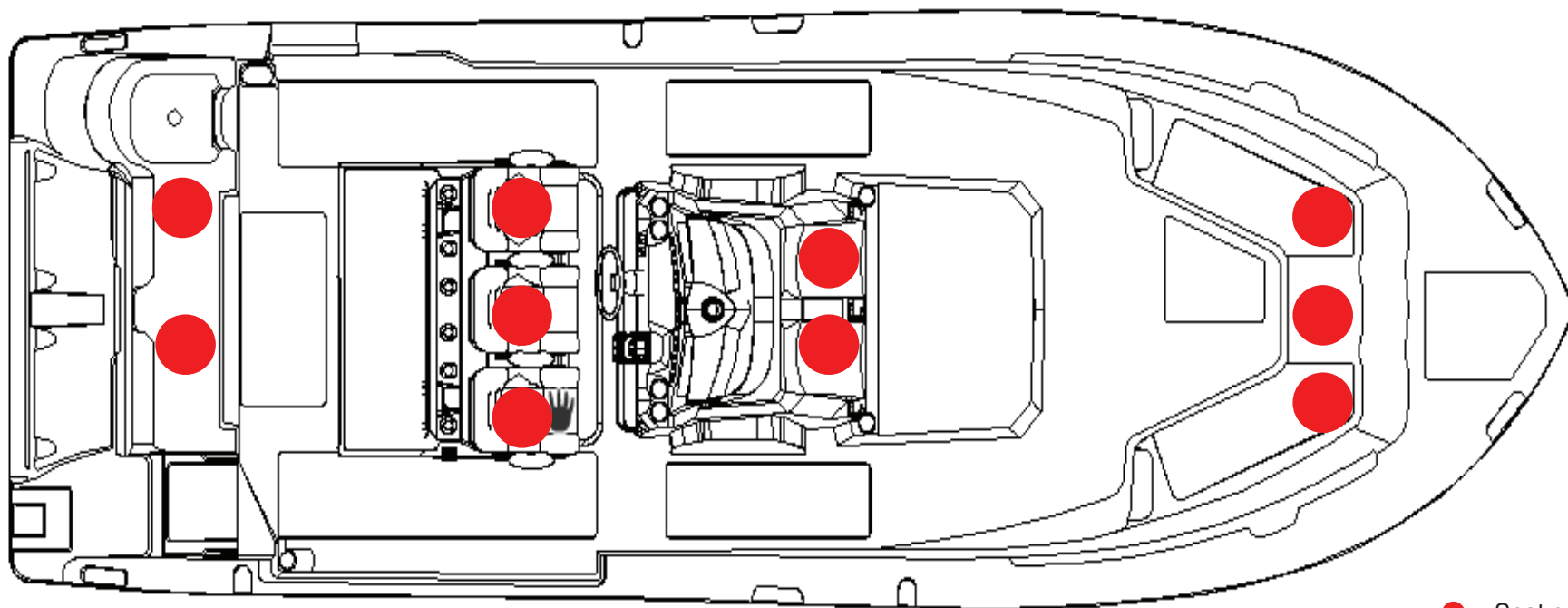
Max. Weight Capacity	Yacht Certification
Persons	Yacht Certification
Persons Weight	Yacht Certification
Max. HP	700 hp (522 kw)
L.O.A.	32' (9.75 m)
Beam	10' 8" (3.25 m)
Draft	24 in. (0.61 m)
Height, Keel to Top (Light Folded)	**
Bridge Clearance Hard Top	115 in. (2.92 m)
Max. Weight Boat (w/ Fluids, Largest HP)	14001 lbs (6351 kg)
Fuel Tank Capacity	313 gal (1185 L)
Freshwater Tank Capacity	30 gal (114 L)
Holding Tank Capacity	12 gal (45 L)

* Keel to Top - 135 in. (3.43 m), W/outriggers - 138 in. (3.51 m), W/18" radar - 139 in. (3.53 m)



DESIGNATED OCCUPANT SEATING

Be sure all passengers are properly seated in designated seating positions and not riding on the bow, bow pulpit, deck, gunwale or rear sun deck while underway. Passengers must use hand-holds and use caution when riding in the bow. Move to the aft passenger seats during rough water operation or if visibility is restricted.

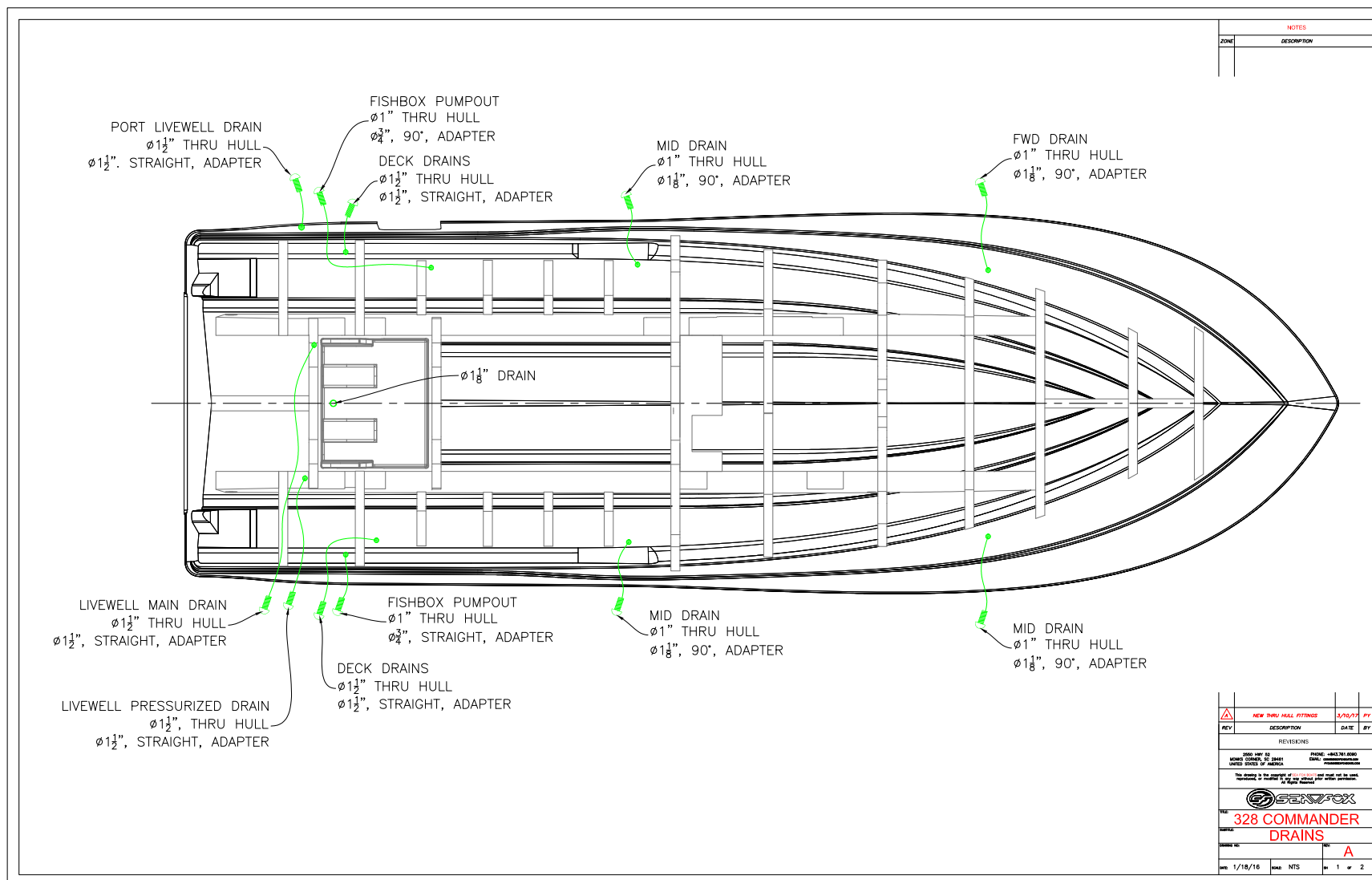


● = Seat position

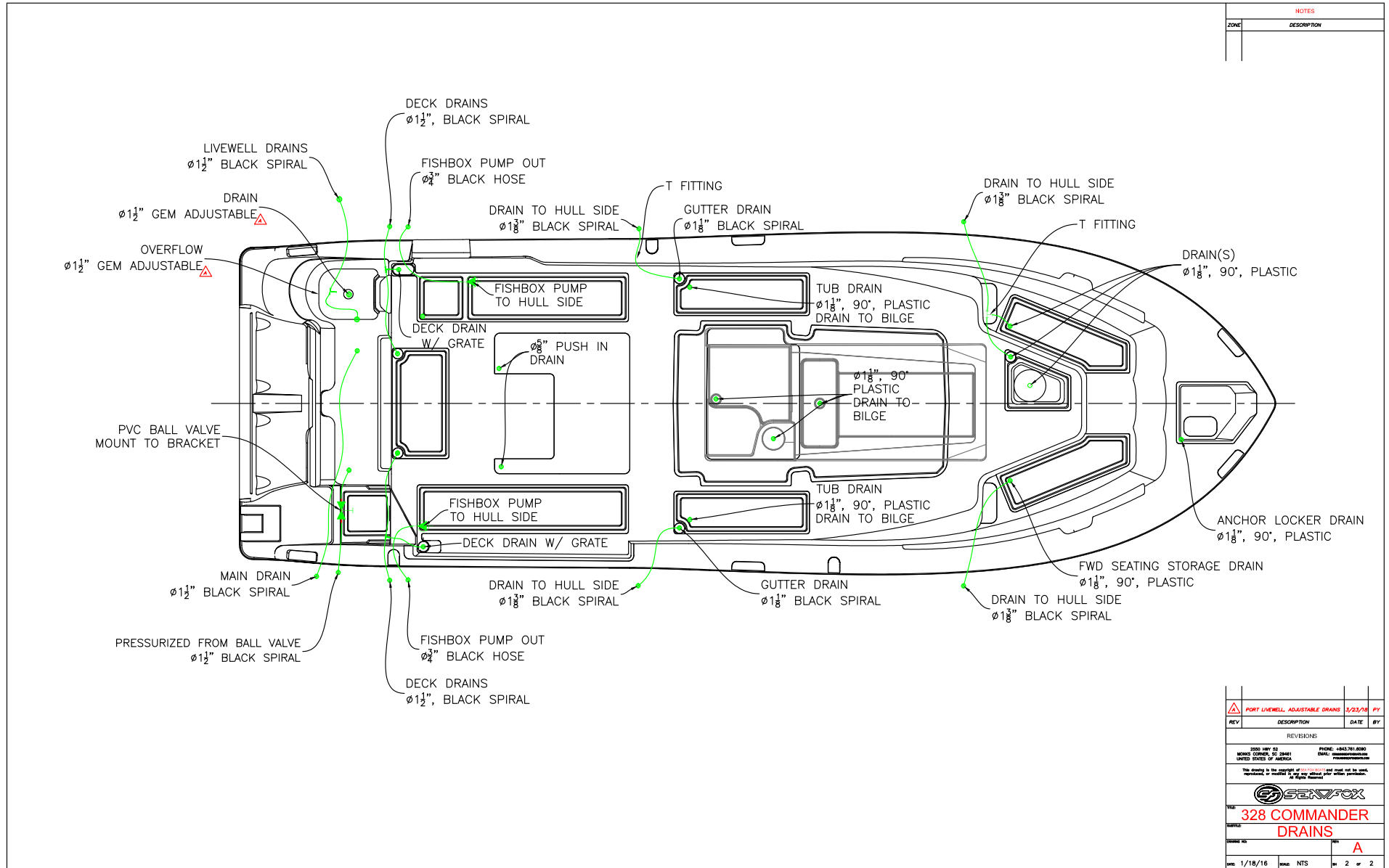
SFOX-0021

PLUMBING SCHEMATICS

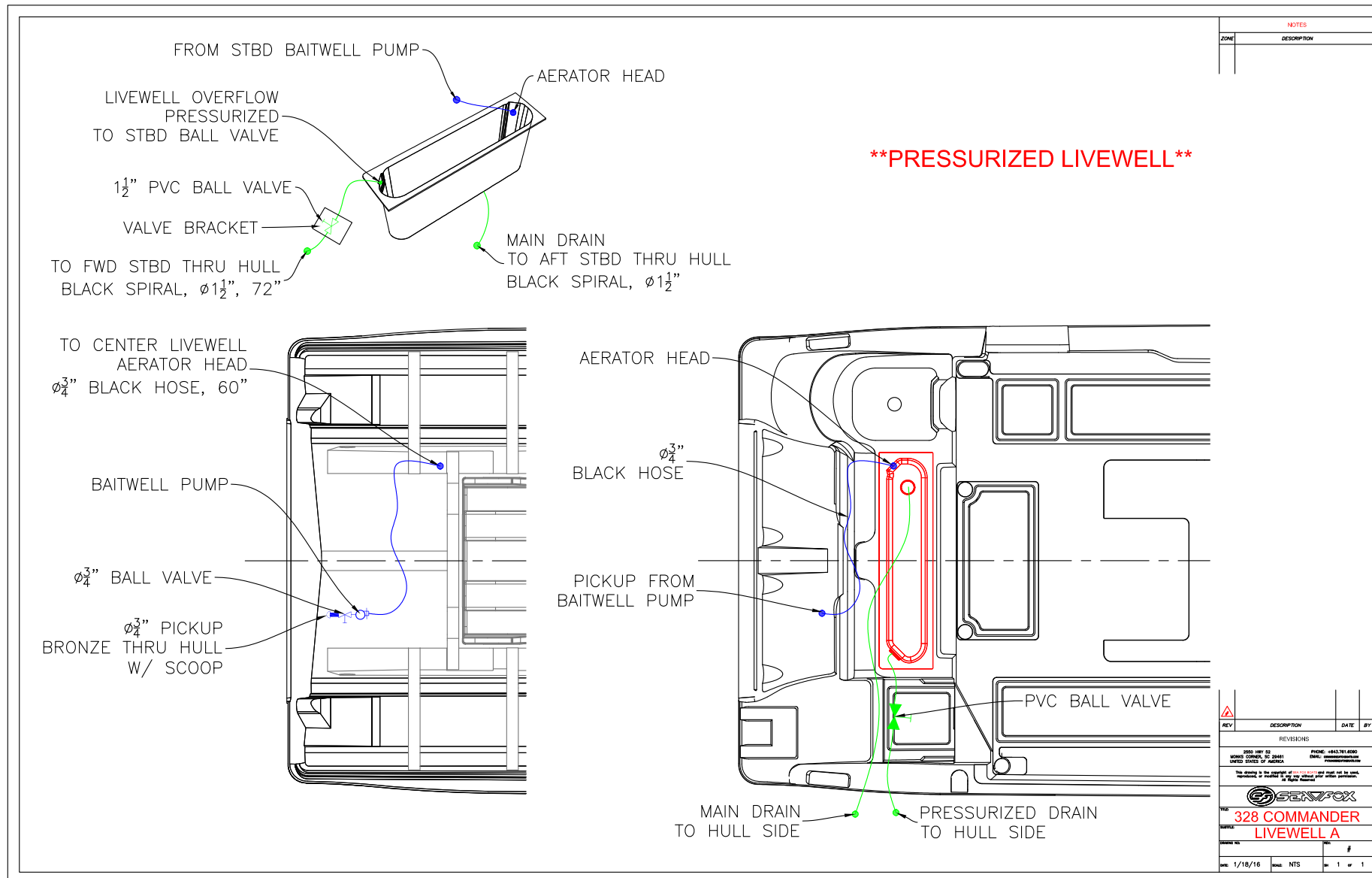
COMMANDER DRAINS



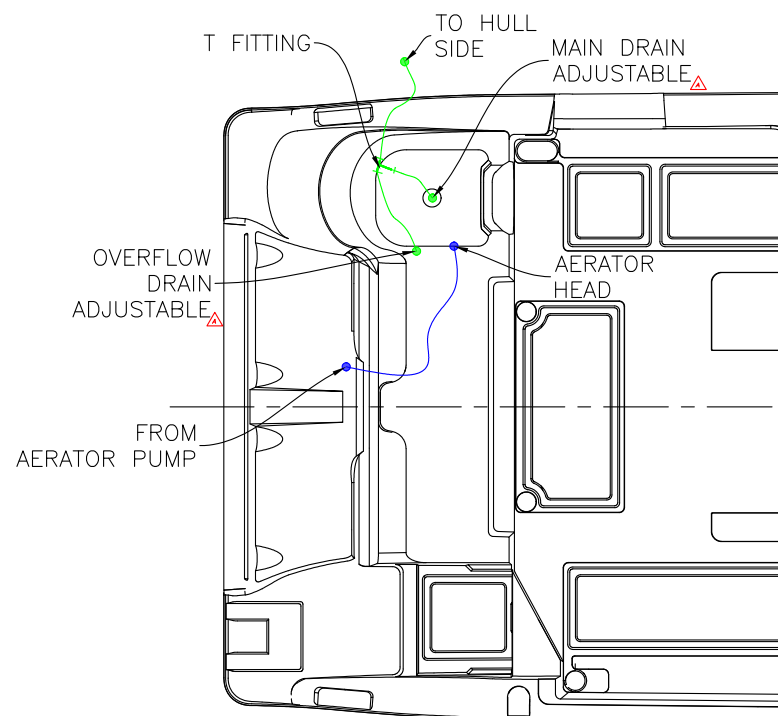
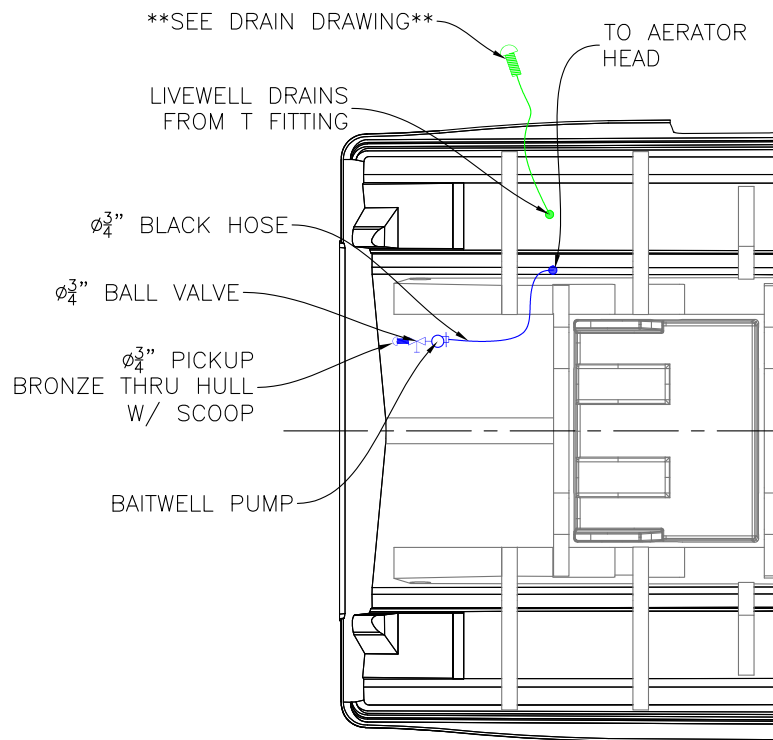
COMMANDER DRAINS (CONTINUED)



COMMANDER LIVEWELL A SYSTEM




COMMANDER LIVEWELL B SYSTEM

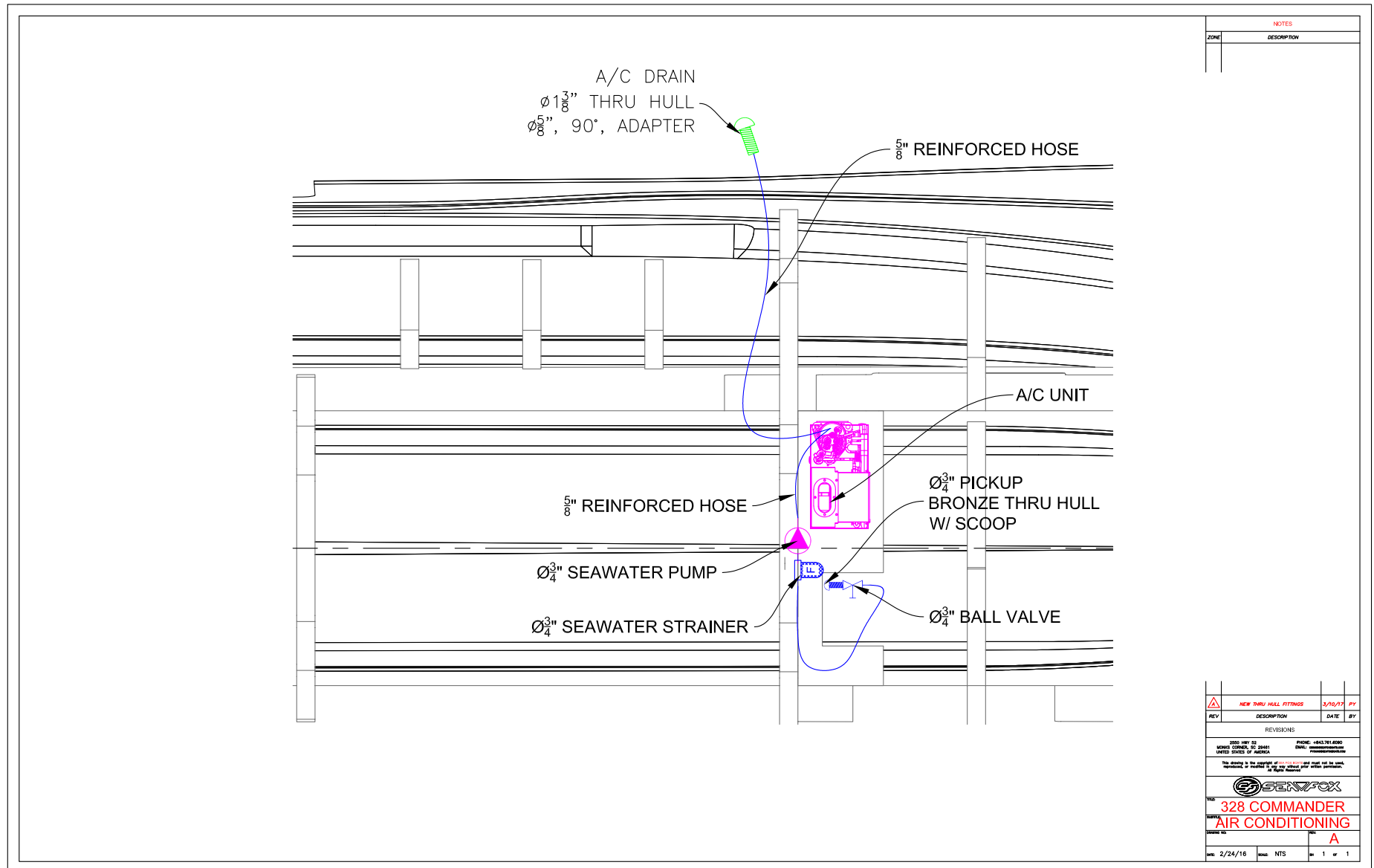


****AQUARIUM LIVEWELL****

NOTES	
ZONE	DESCRIPTION

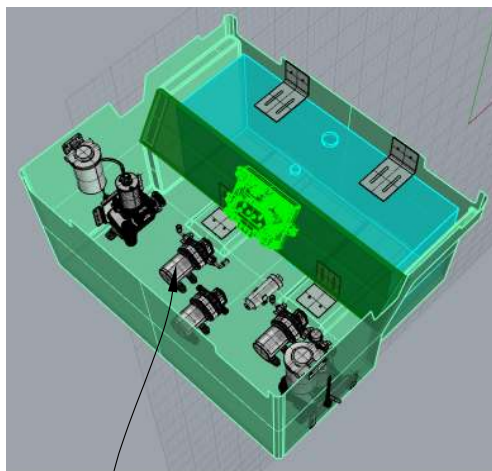
Δ	CHANGE DRAIN TO ADJUSTABLE SEE EQUISS	3/29/16	PV
REV	DESCRIPTION	DATE	BY
REVISIONS			
3500 HWY 82 MIDLAND COUNTY, TX 79701 UNITED STATES OF AMERICA			
PHONE: +845.761.6000 EMAIL: info@seafox.com			
You warrant to the purchaser of this product that it will meet the stated specifications, insofar as they are within the scope of the product.			
			
328 COMMANDER LIVEWELL B			
A			
DATE	1/18/16	ISSUE	NTS
REV	1	OF	1

COMMANDER AIR CONDITIONING SYSTEM

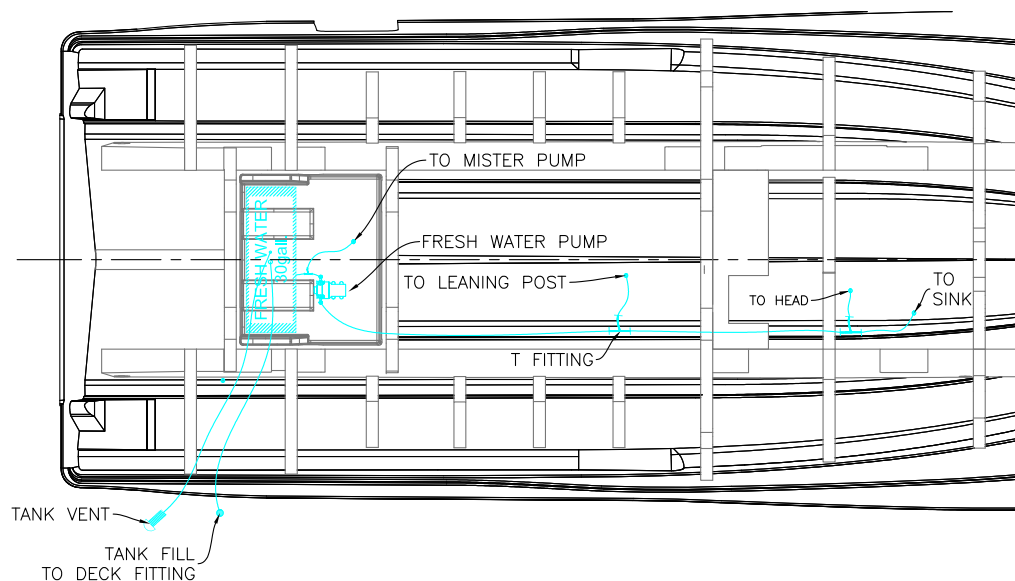
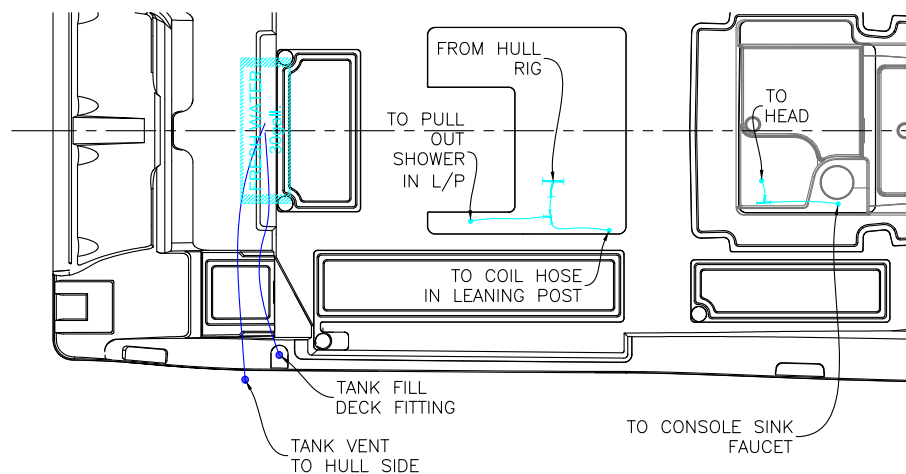





COMMANDER FRESH WATER SYSTEM



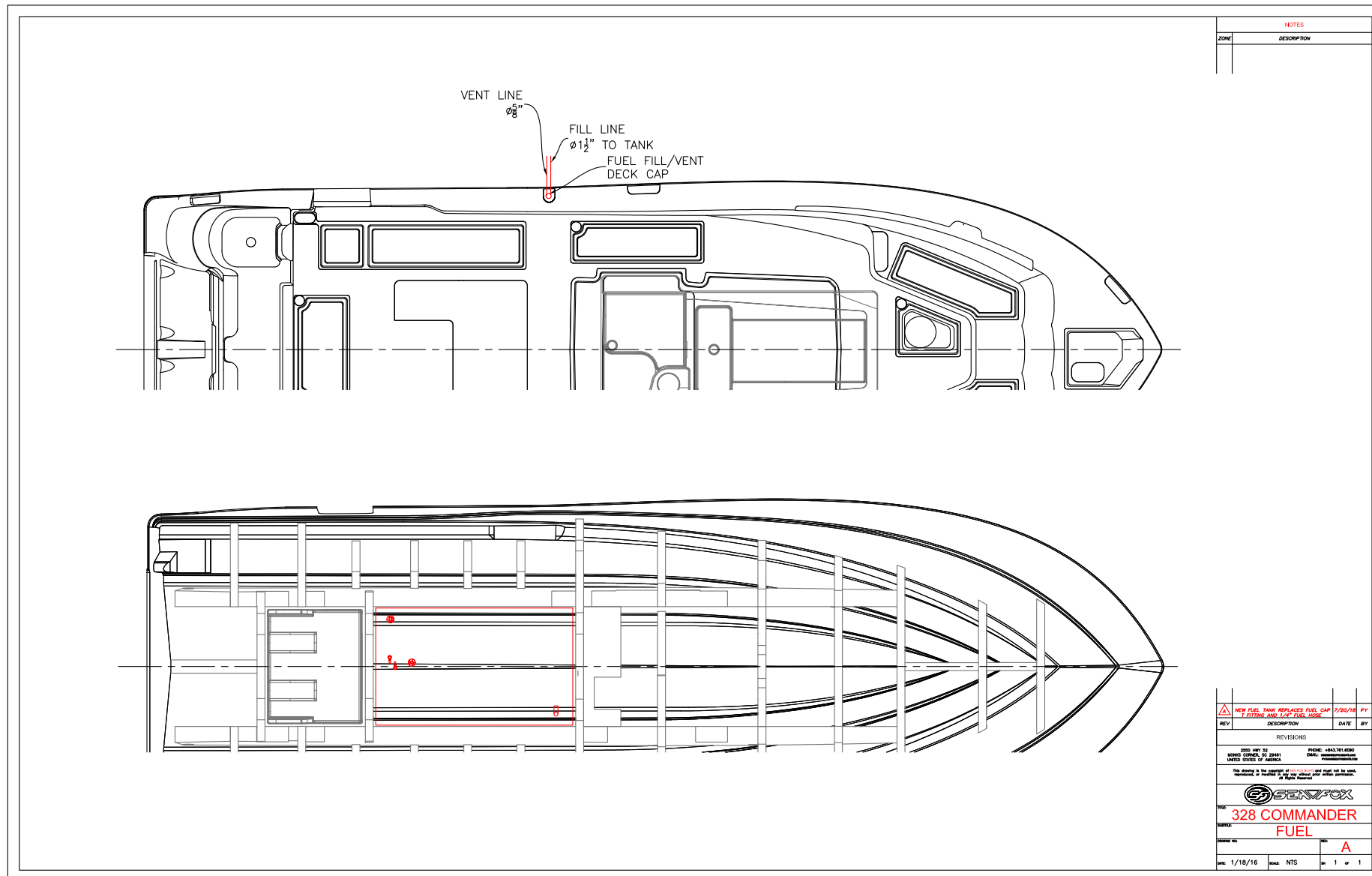
FRESH WATER



NOTES	
ZONE	DESCRIPTION

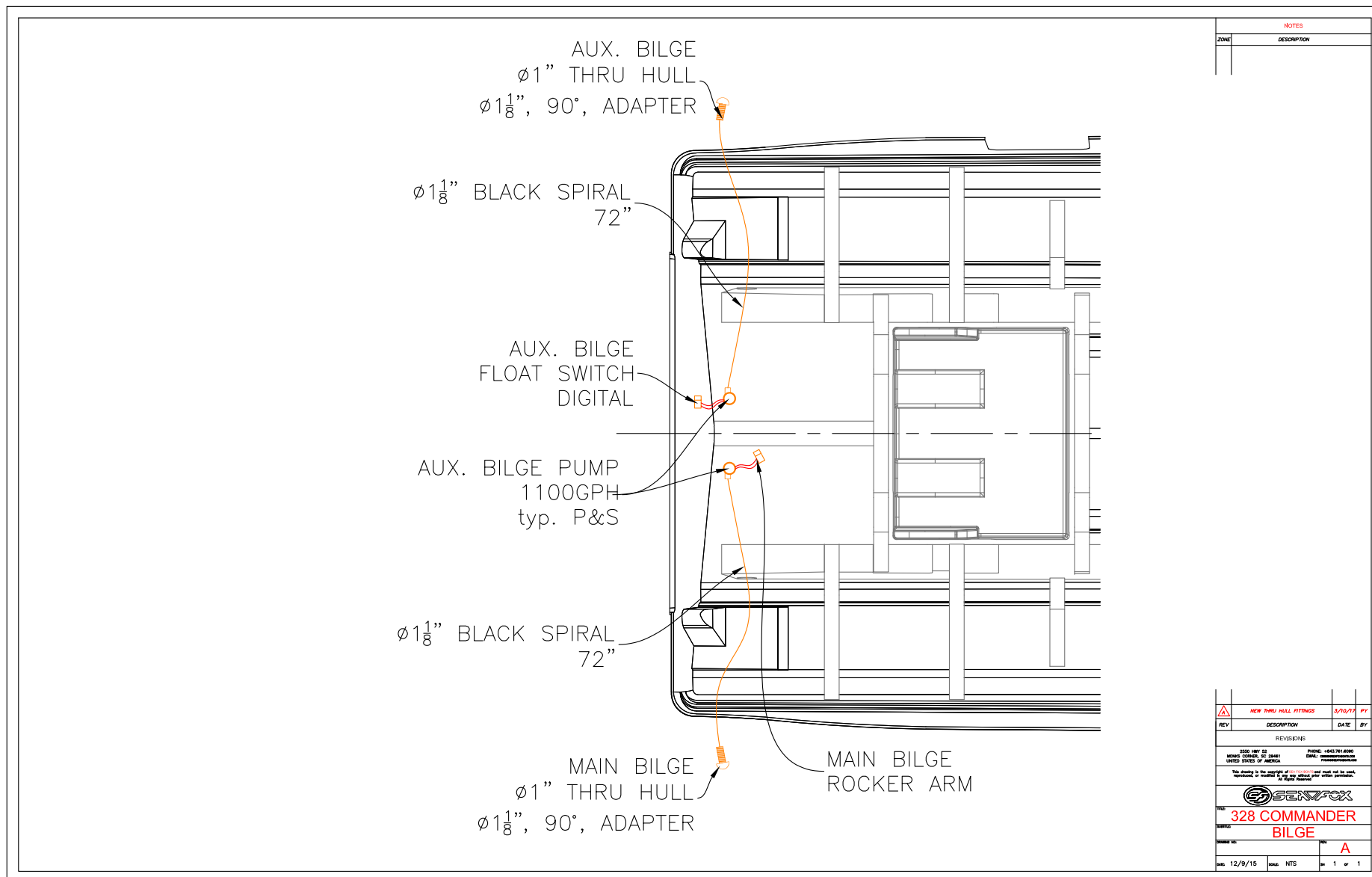
			
REV	DESCRIPTION	DATE	
REVISIONS			
0000	HRV 02	PHONE: +643.781.4000	
MOOREHEAD, BC 3841		FAX: +643.781.4001	
UNITED STATES OF AMERICA		www.mohrhead.com	
This drawing is the property of MOHR HEAD and must not be used, reproduced, or modified in any way without prior written permission. All Rights Reserved.			
			
VEL:	328 COMMANDER		
FEEL:	FRESH WATER		
COATING NO.			#
DATE: 12/9/15	SCALE: NTS	IN	1 of 1

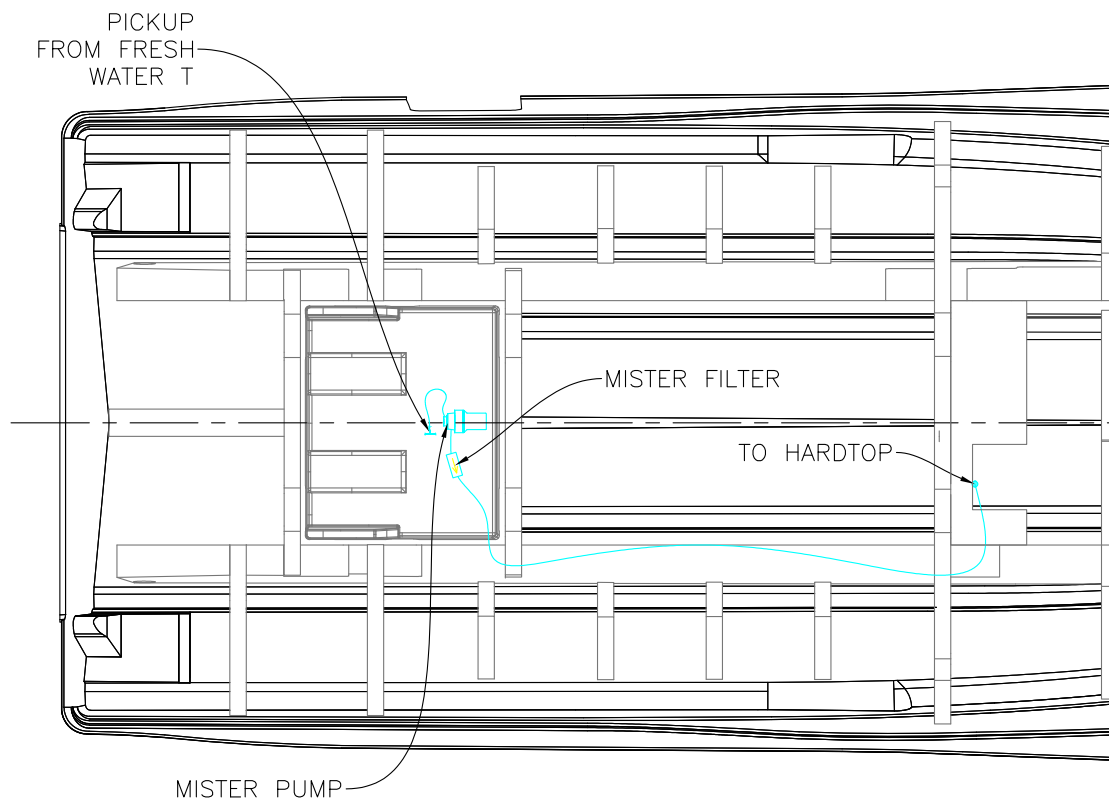
COMMANDER FUEL SYSTEM







COMMANDER BILGE SYSTEM



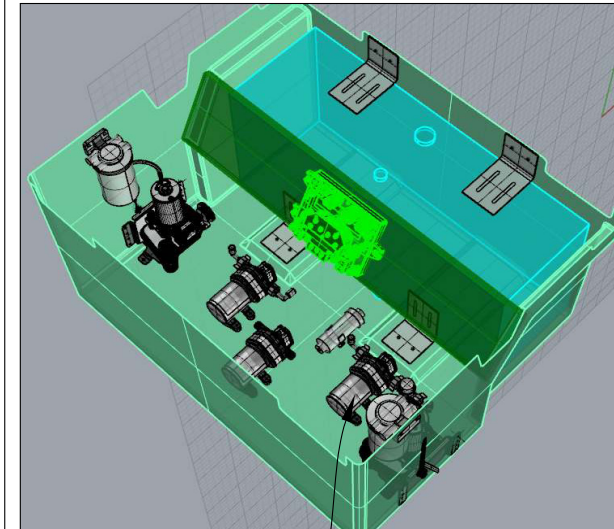


NOTES	
ZONE	DESCRIPTION

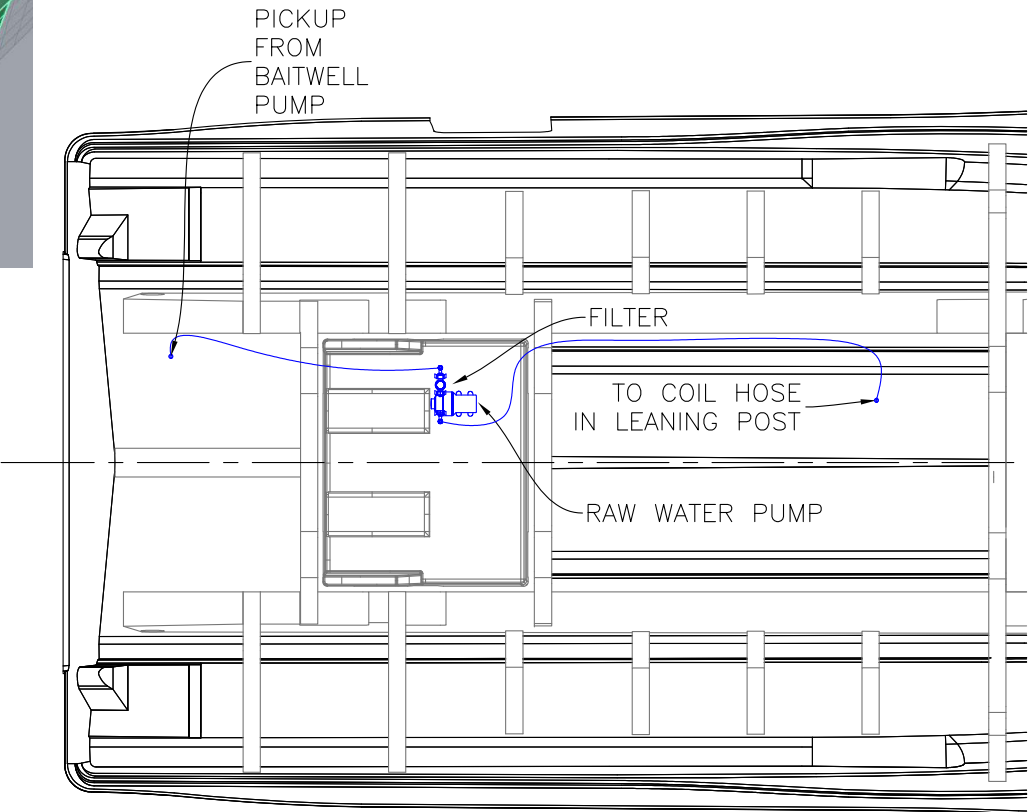
					
REV	DESCRIPTION				DATE
REVISIONS					
2550 HWY G MONROE, MISSISSIPPI, 39201 UNITED STATES OF AMERICA			PHONE: (601) 371.6090 FAX: (601) 371.6091 monroe@monroe.com		
This drawing is the property of SENTRYFOX and must not be used, reproduced, or modified without prior written permission. <i>In English Version</i>					
					
TITLE	328 COMMANDER MISTER SYSTEM				
SERIAL					
DATE	1/18/16	MODEL	NTS	BY	1 OF 1



COMMANDER RAW WATER SYSTEM



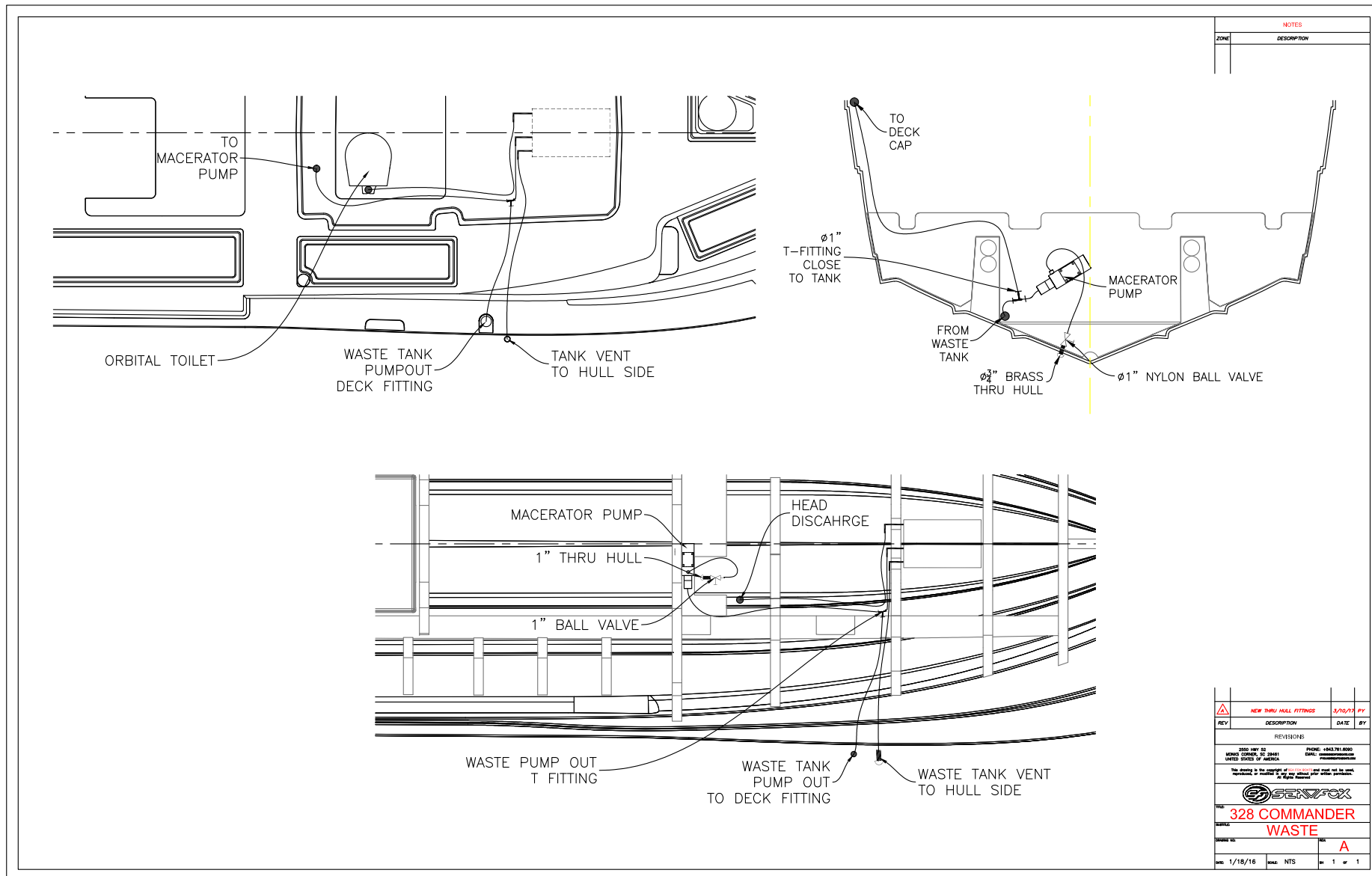
RAW WATER



NOTES	
ZONE	DESCRIPTION

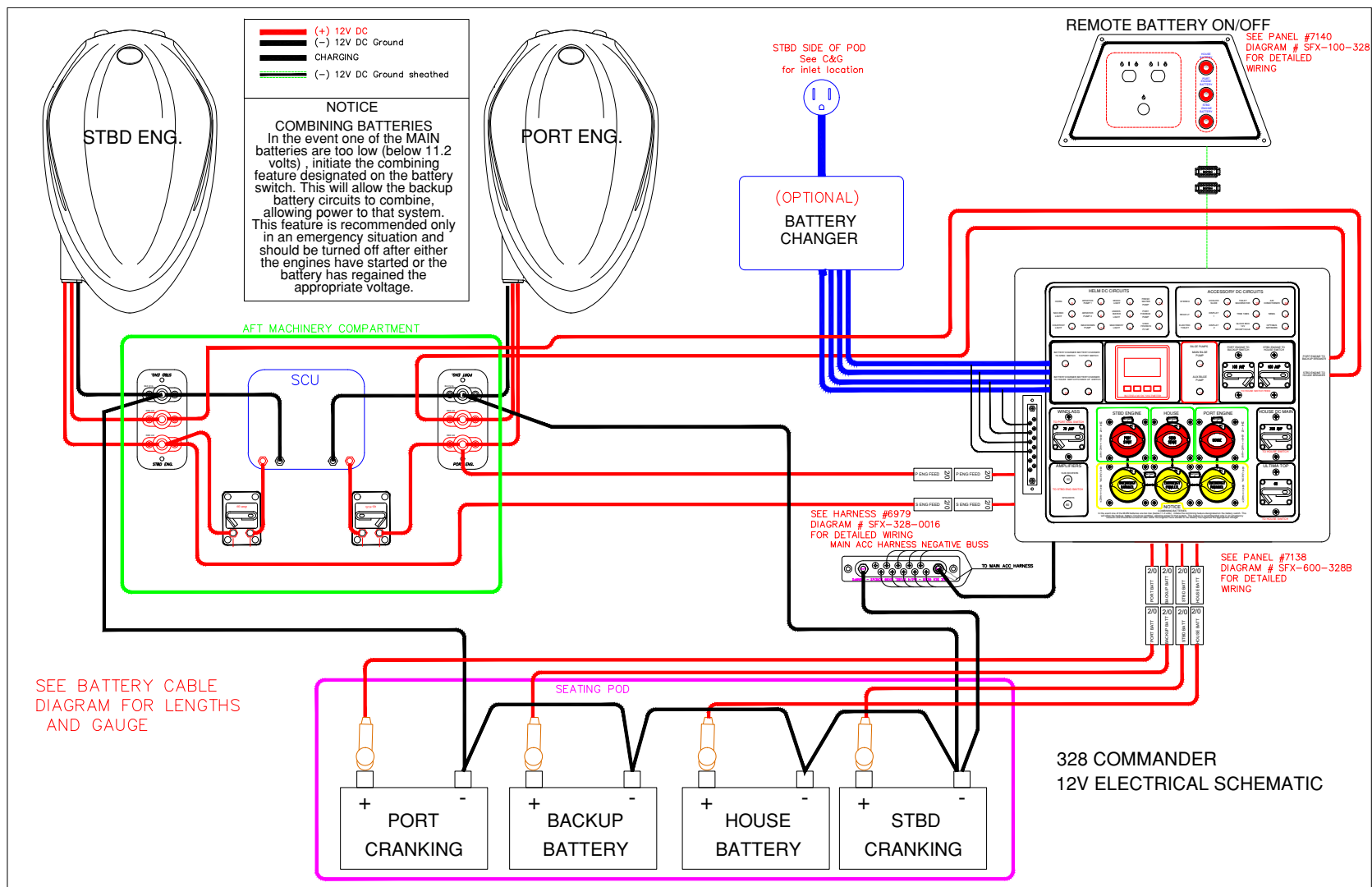
REV	DESCRIPTION	DATE	BY
REVISIONS			
3283 10/15/15 MARCO CORP. 3283 UNITED STATES OF AMERICA			
PHONE: 1-847-761-8000 EMAIL: info@seafox.com WWW.SEAFox.com			
This drawing is the property of SeaFox and shall not be used, reproduced, or altered without the written permission of SeaFox.			
328 COMMANDER RAW WATER			
DATE: 1/18/16		BY: NTS	1 of 1

COMMANDER WASTE SYSTEM

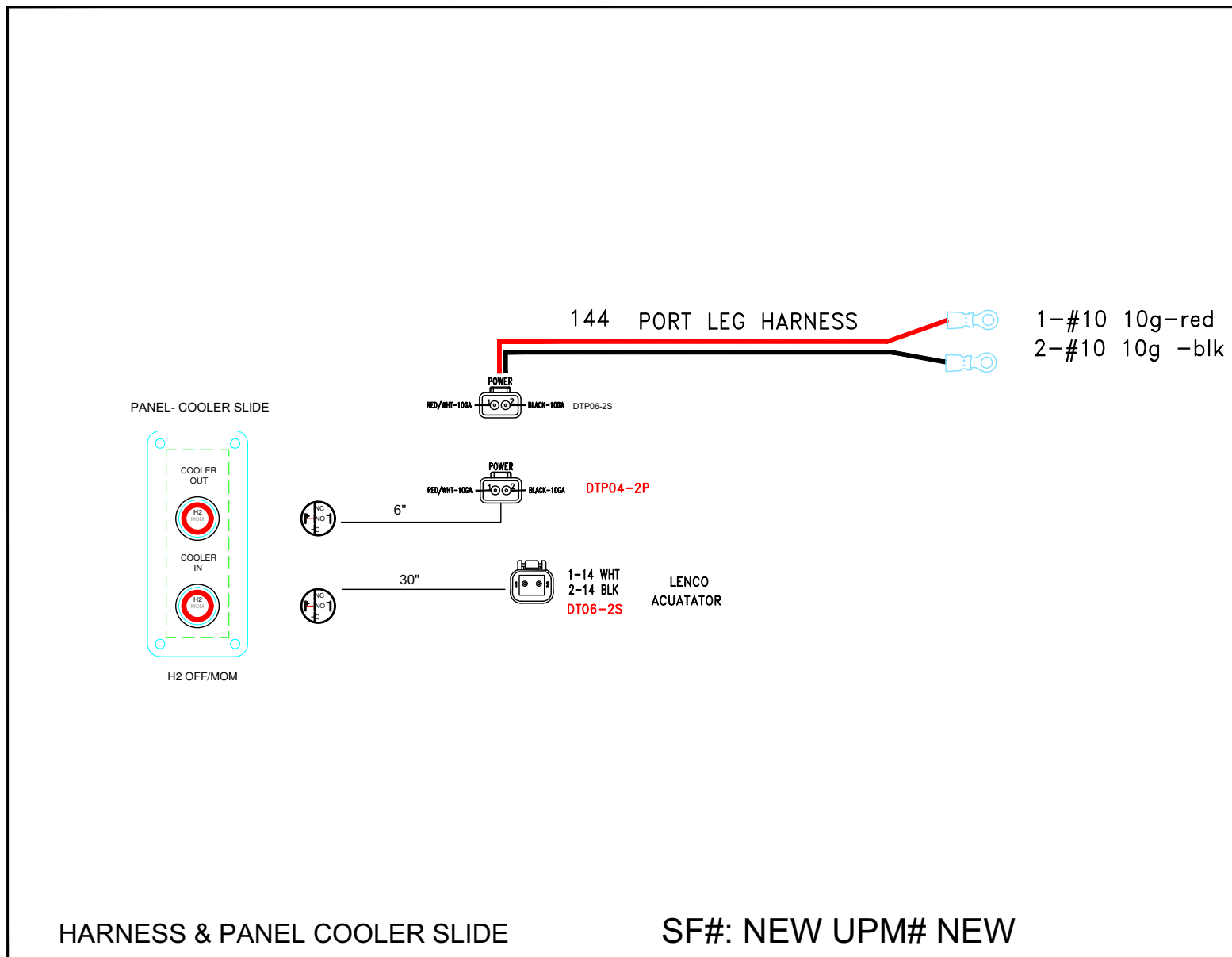


ELECTRICAL SCHEMATICS

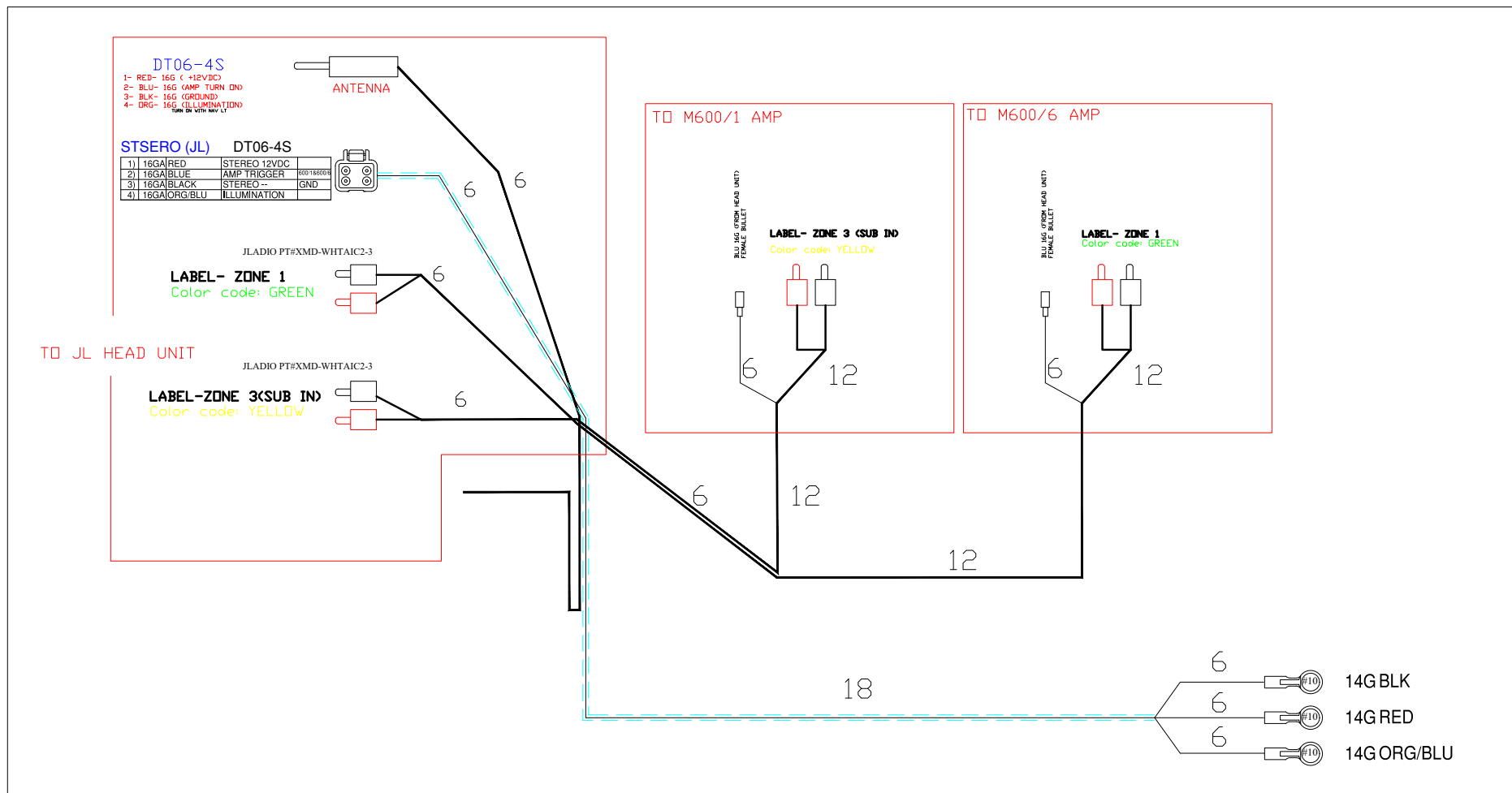
TWIN ENGINE WITH 4-BATTERY SETUP AND CHARGER



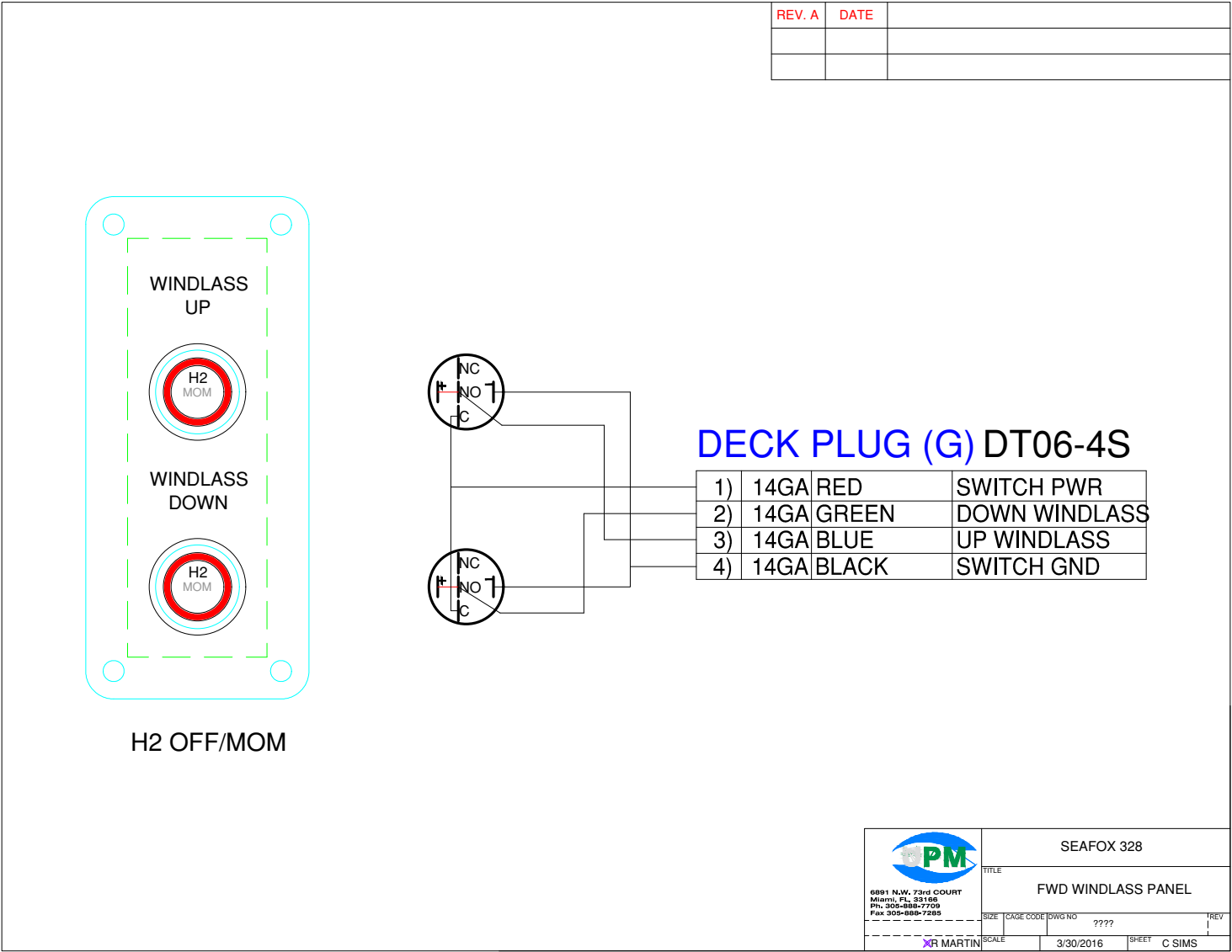
HARNESS & PANEL COOLER SLIDE




HARNESS JL STEREO



HARNESS WINDLASS PANEL





6881 N.W. 73rd COURT
Miami, FL 33166
Ph. 305-888-7708
Fax 305-888-7285

SEAFOX 328

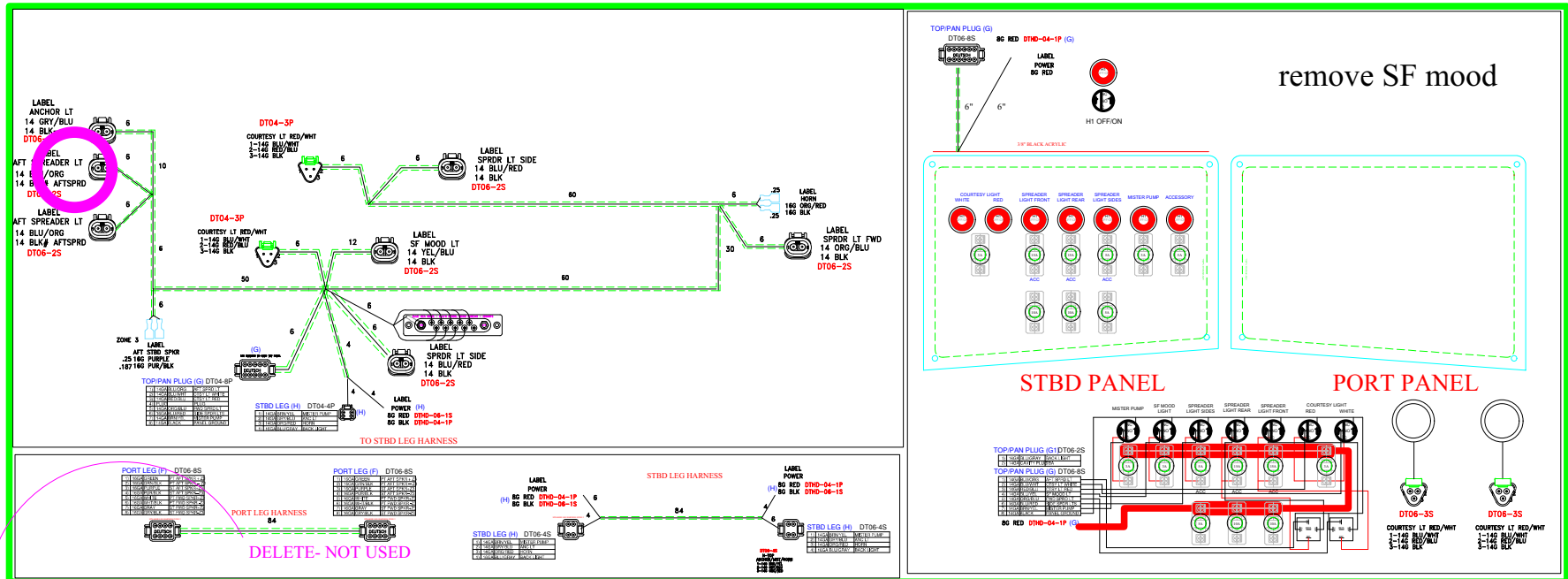
TITLE

FWD WINDLASS PANEL

SIZE	CAGE CODE	DWG NO	REV
SCALE	3/30/2016	SHEET	C SIMS

HARNESS PANEL KIT

SFX-305-328 HARNESS/ PANEL KIT 328

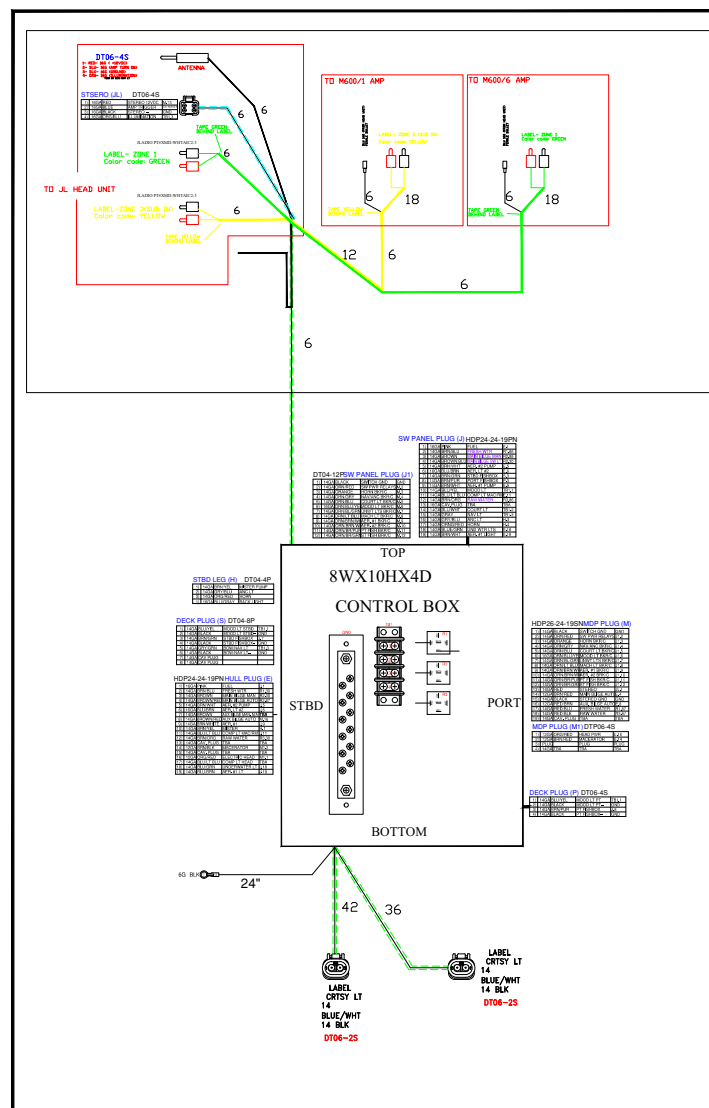


SFX-305-328A: 1) CHANGE FROM 3 WAY AND TWO WAY PLUG TO 4WAY PLUG
FOR MISTER, NAV, BACK LIGHT AND HORN, CHANGE NOMINCLATURE FROM SF TO ACCESSORY
2) CHANGE NOMINCLATURE FROM SF TO ACCESSORY

SFX-305-328B: 1) REMOVE SPEAKER WIRING- NOT USED FORE JL AUDIO

CONTROL BOX

SFX-900-328X
BOX, CONTROL 328



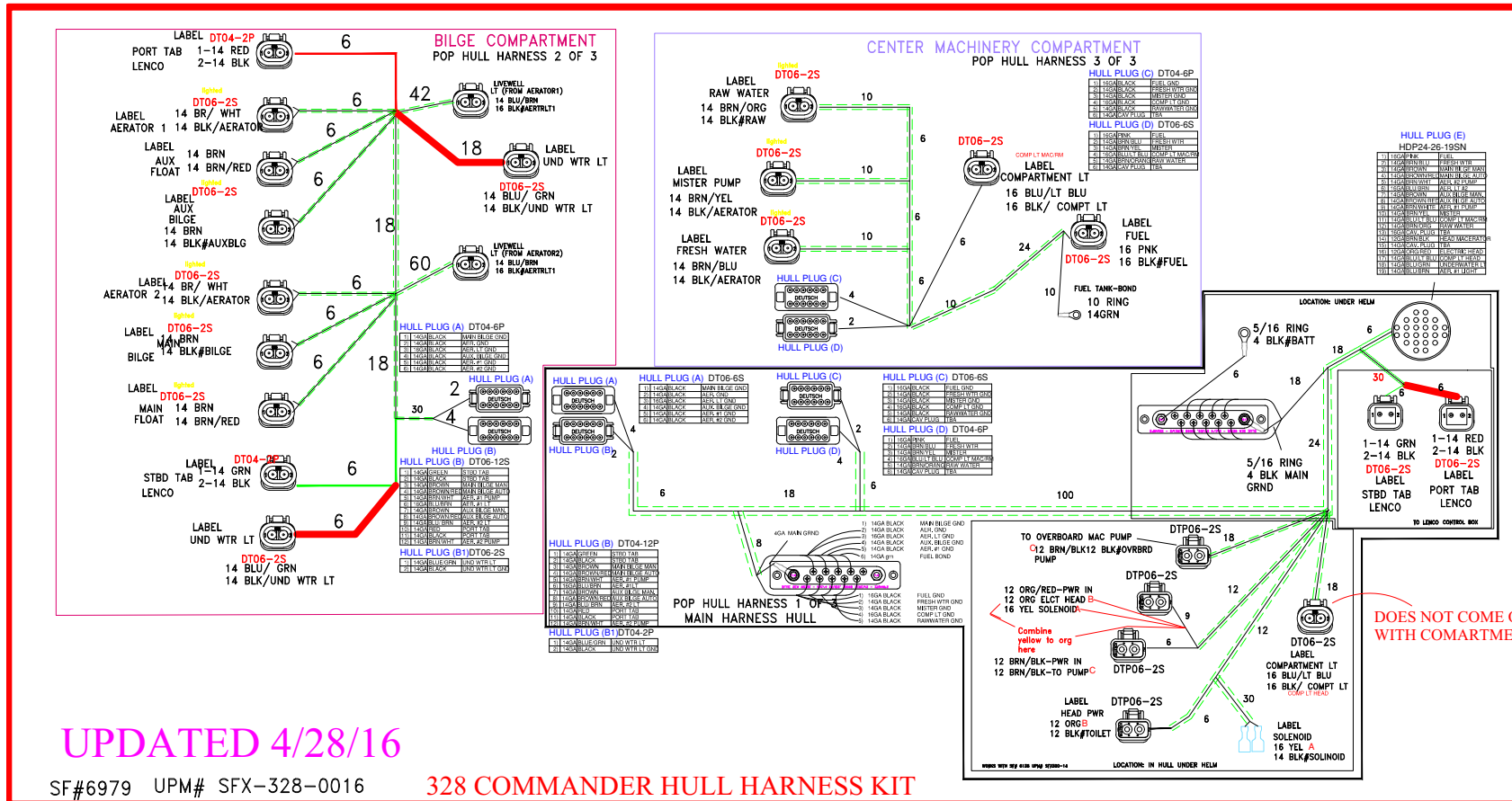
Move charging lead to correct battery switch



HARNESS ACC W/ LEN/ORB DEUTSCH (P/N 6979)

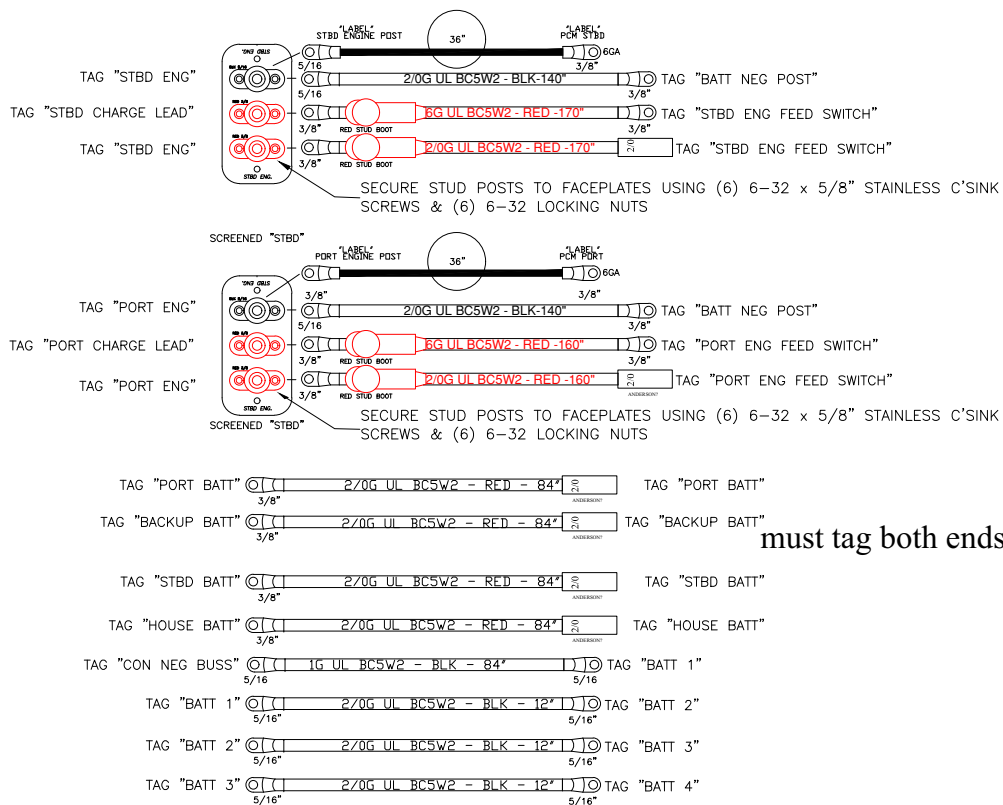
SFX-328-0016

HARNESS, HULL KIT 328



HARNESS BATTERY CABLE SET EPS (P/N 6980)

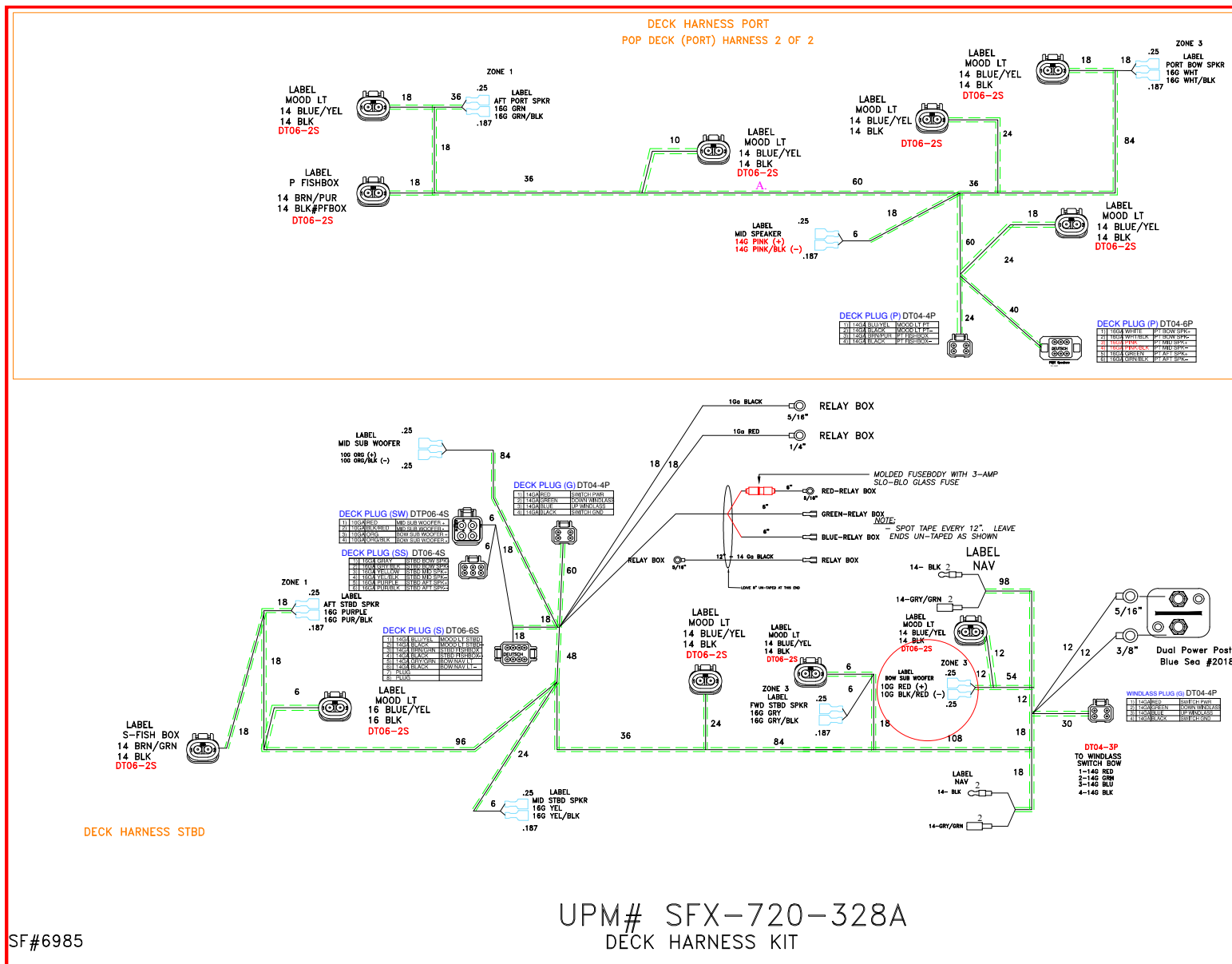
BATTERY CABLE SET HULL 328 SF# 6980 UPM# SFX-721-328B



NOTES:

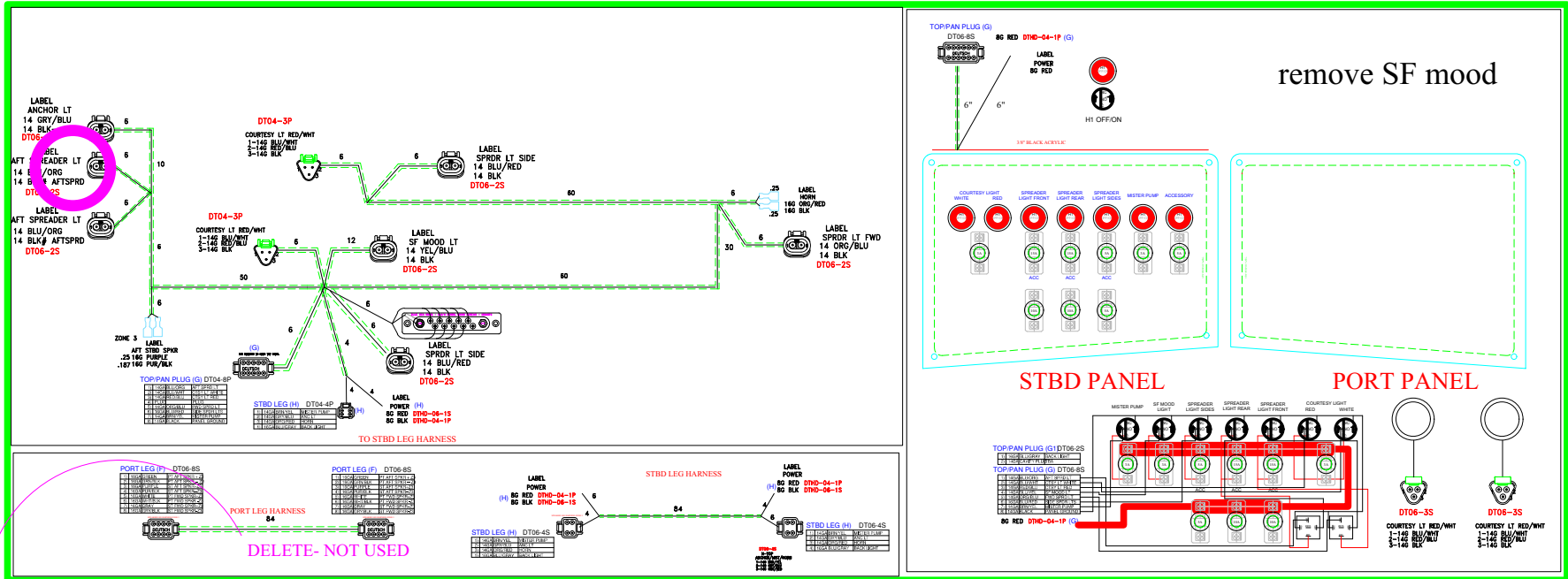
- (1) ALL RING TERMINALS ARE TO BE MECHANICAL CRIMPED AND ADHESIVE-LINED HEAT SHRUNK
- (2) TAG ALL CABLES AS SHOWN WITHIN 1-1/2" OF TERMINALS
- (3) CABLE TIE "TAG" (SHOWN ON TOP) TO BATTERY KIT.
- (4) BOX COMPLETED BATTERY KIT ASSEMBLY.

HARNESS DECK (P/N 6985)



U PANEL SWITCH/HARNESS ULTIMA (P/N 6997)

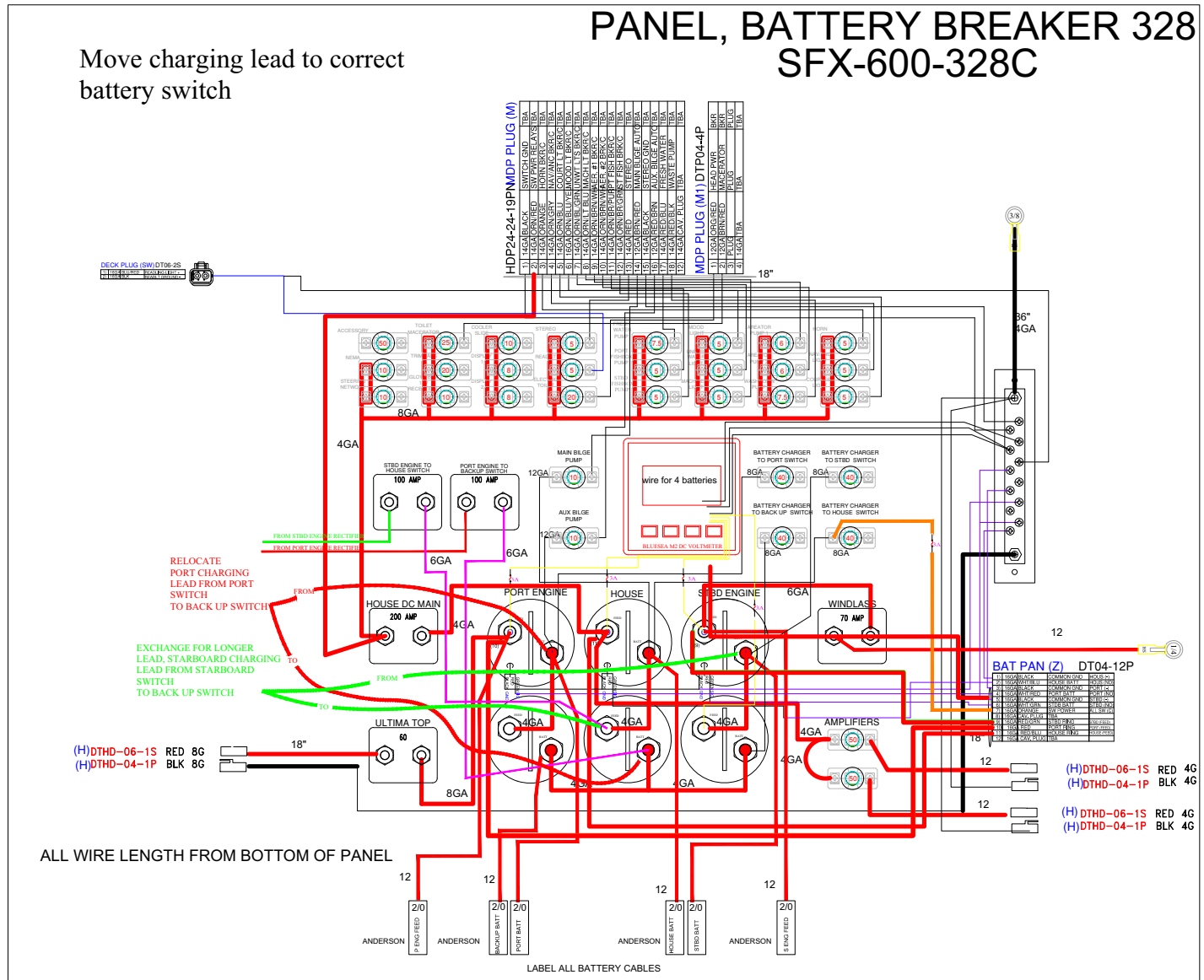
SFX-305-328 HARNESS/ PANEL KIT 328



SFX-305-328A: 1) CHANGE FROM 3 WAY AND TWO WAY PLUG TO 4WAY PLUG
FOR MISTER, NAV, BACK LIGHT AND HORN, CHANGE NOMINCLATURE FROM SF TO ACCESSORY
2) CHANGE NOMINCLATURE FROM SF TO ACCESSORY

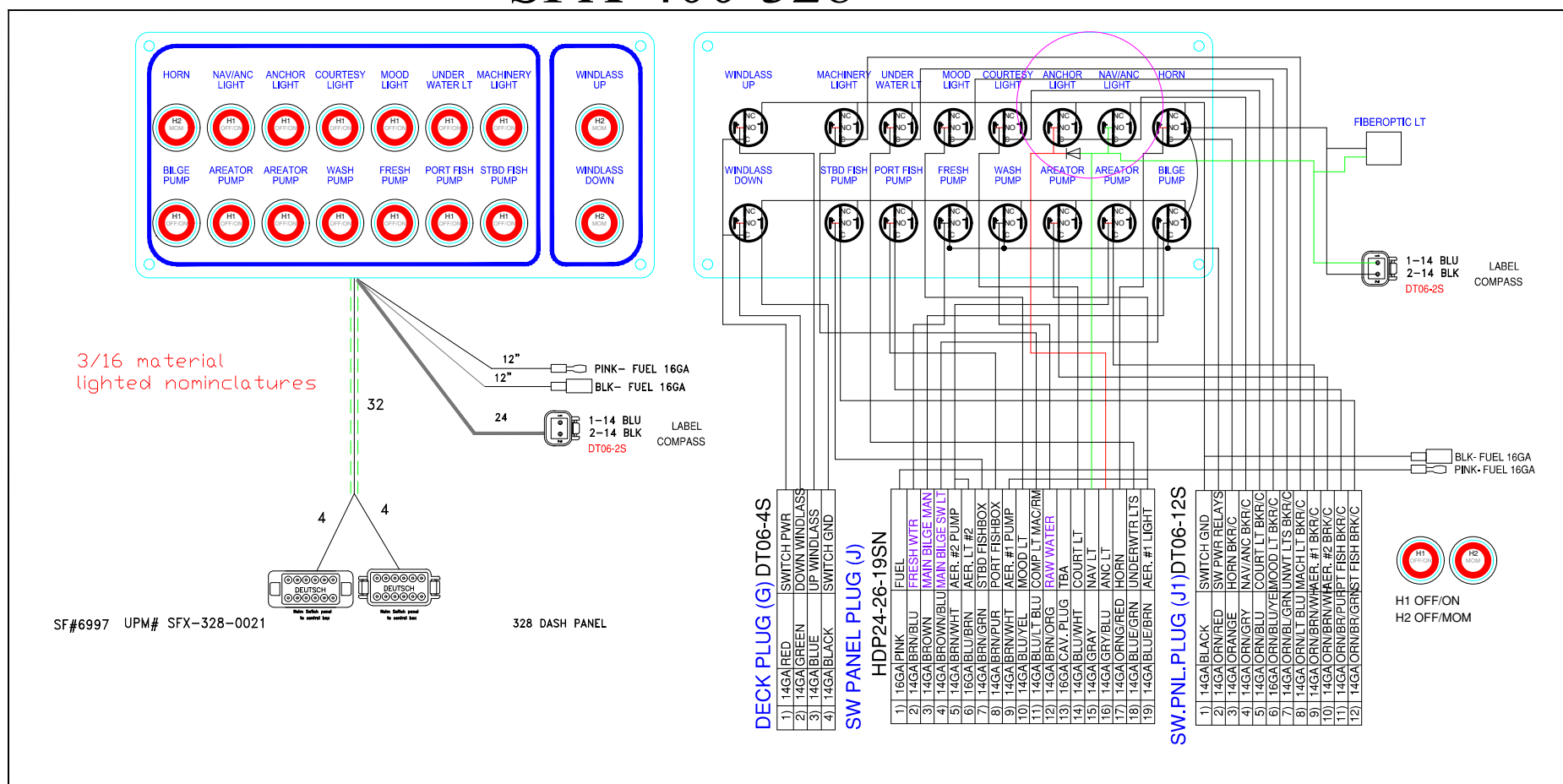
SFX-305-328B: 1) REMOVE SPEAKER WIRING- NOT USED FORE JL AUDIO

PANEL BREAKER CON W/ BATTERY SWITCH (P/N 7138)

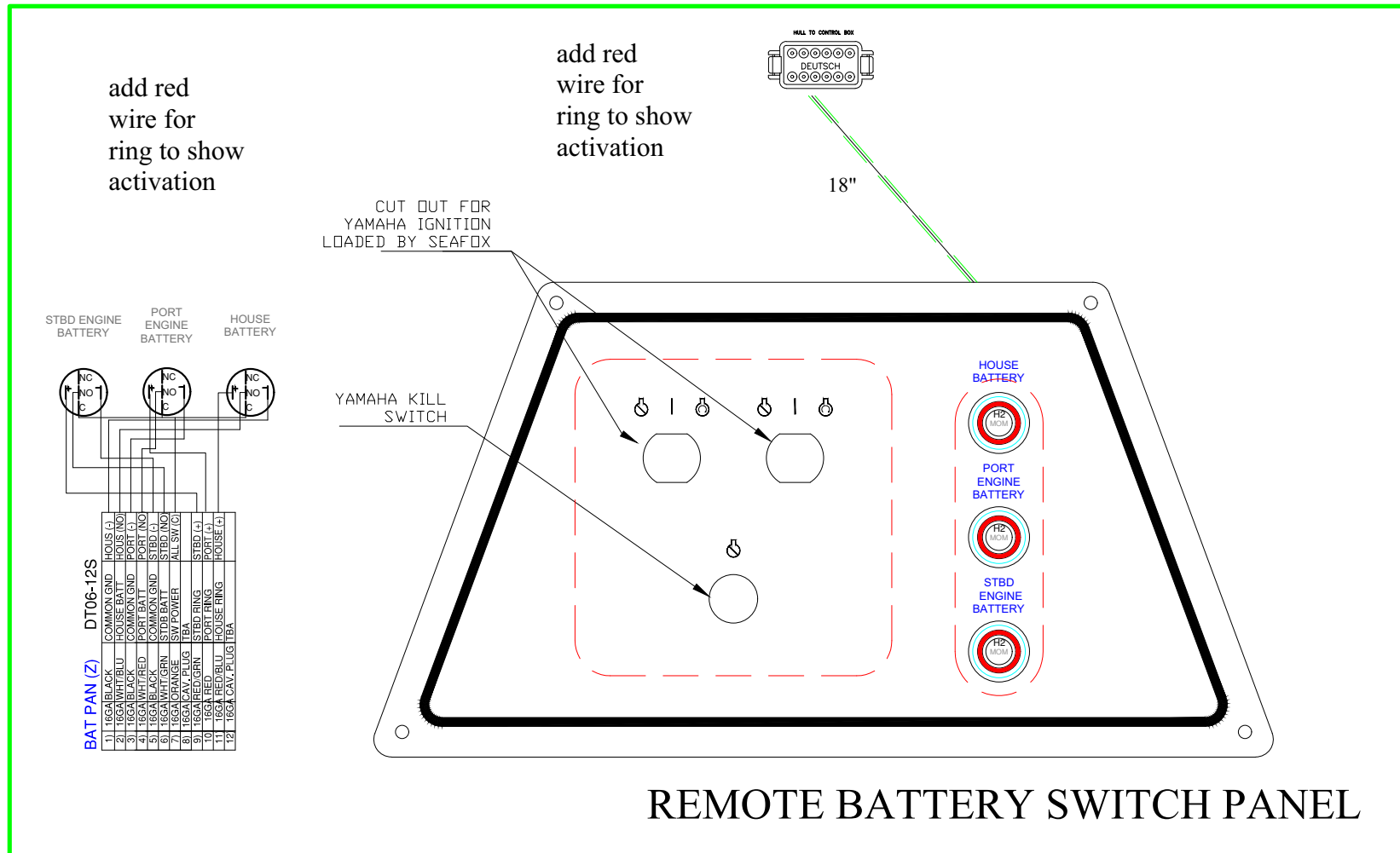


PANEL SWITCH DEUTSCH (P/N 7139)

PANEL, HELM SWITCH 328 SFX-400-328

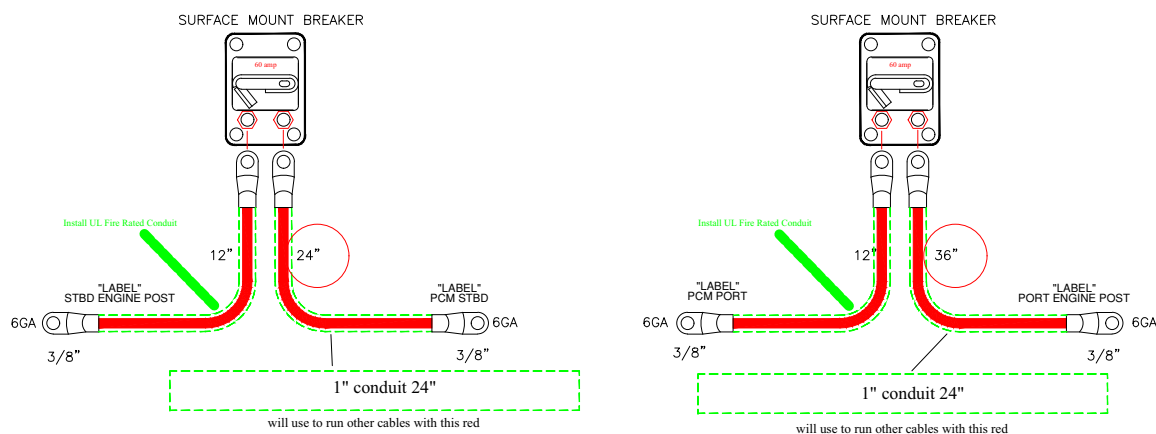


PANEL, KEY BATT 328 SFX-100-328



BREAKER KIT - 60-AMP EPS (P/N 7378)

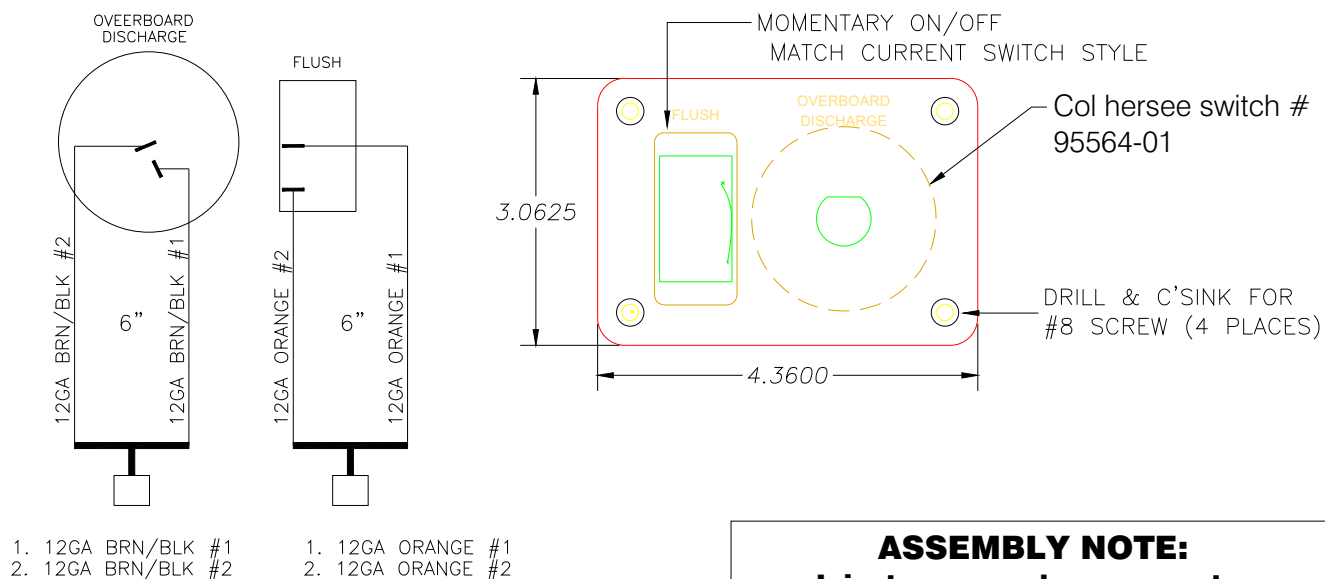
BREAKER KIT- SEASTAR EPS-60AMP- SFX-730-328A



NOTES:

- (1) ALL RING TERMINALS ARE TO BE MECHANICAL CRIMPED AND ADHESIVE-LINED HEAT SHRUNK
- (2) TAG ALL CABLES AS SHOWN WITHIN 1-1/2\" OF TERMINALS
- (3) CABLE TIE \"TAG\" (SHOWN ON TOP) TO BATTERY KIT.
- (4) BOX COMPLETED BATTERY KIT ASSEMBLY.

HEAD PANEL SWITCH ORB (P/N 6136) – OPTIONAL

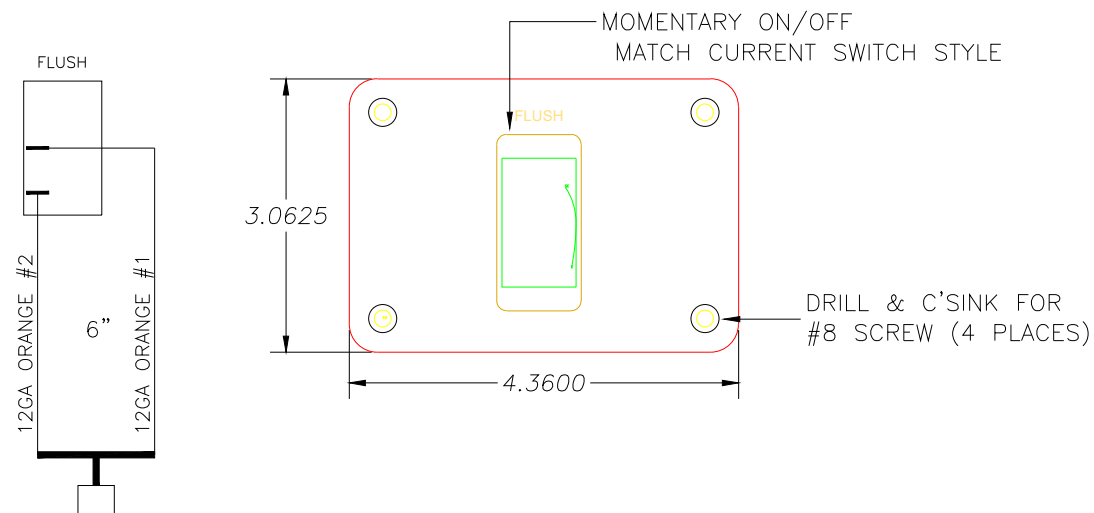


ASSEMBLY NOTE:
Inject **every push-on connector** with dielectric grease prior to attachment to switch.

Quantity	648-ALUMINUM - 6061-T6 ALUMINUM	
	Material	
Work Order Number	ELECTRIC FLUSH-DISCHARGE SWITCH PANEL - WHITE- BLACK LETTERS	
	File Number SFX300-14	
	SEAFOX BOAT COMPANY	
Due Date	07-28-15	
	Faceplate Number	Panel Number

SEAFOX PT# 6136

HEAD PANEL SWITCH ORB (P/N 6870)



1. 12GA ORANGE #1
2. 12GA ORANGE #2

MATCH CONNECTORS TO NEW
256CC/WA HARNESS

NOTES:

- (1) PAINT TEXTURED BLACK
- (2) SCREEN WHITE

ASSEMBLY NOTE:
Inject every push-on connector
with dielectric grease prior to
attachment to switch.

SF# 6870 UPM# SFX-028-11

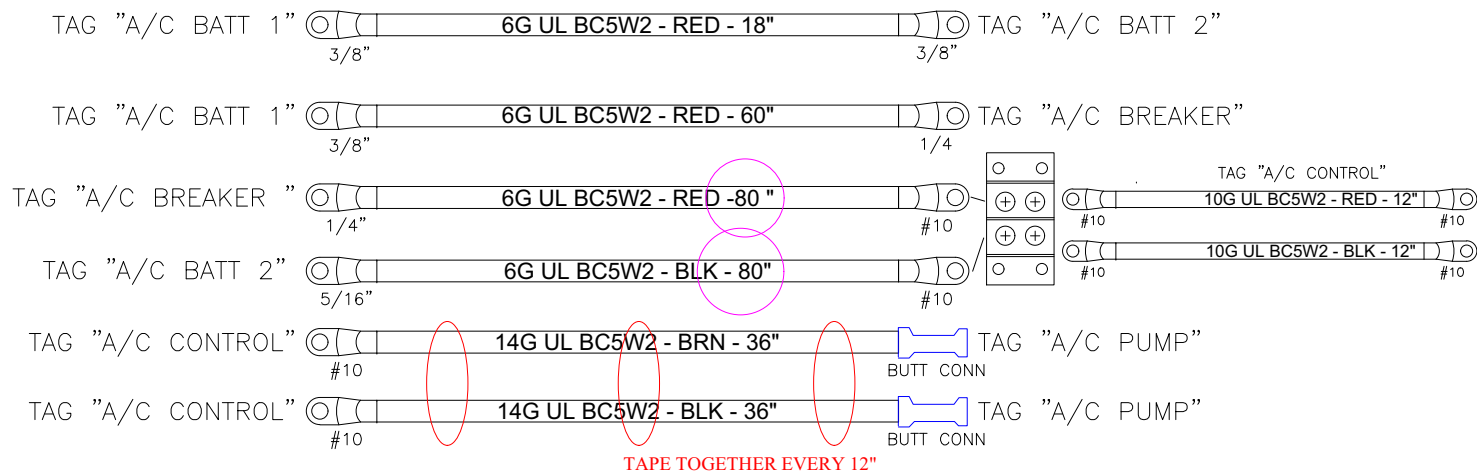
Quantity	648-ALUMINUM - 6061-T6 ALUMINUM	
	Material	
Work Order Number	ELECTRIC FLUSH SWITCH PANEL - BLACK- WHITE LETTERS	
	File Number	
	SEAFOX BOAT COMPANY	
Due Date	07-28-15	
	Faceplate Number	Panel Number

CABLE AC SET (P/N 7141) – OPTIONAL

SFX-750-328A- EXTEND A/C BREAKER- RED, AND A/C BATT 2 ECHANGE TO 60" FRO 36"

SFX-750-328B- EXTEND A/C BREAKER- RED, AND A/C BATT 2 ECHANGE TO 80" FRO 60"

CABLE, AC SET 328



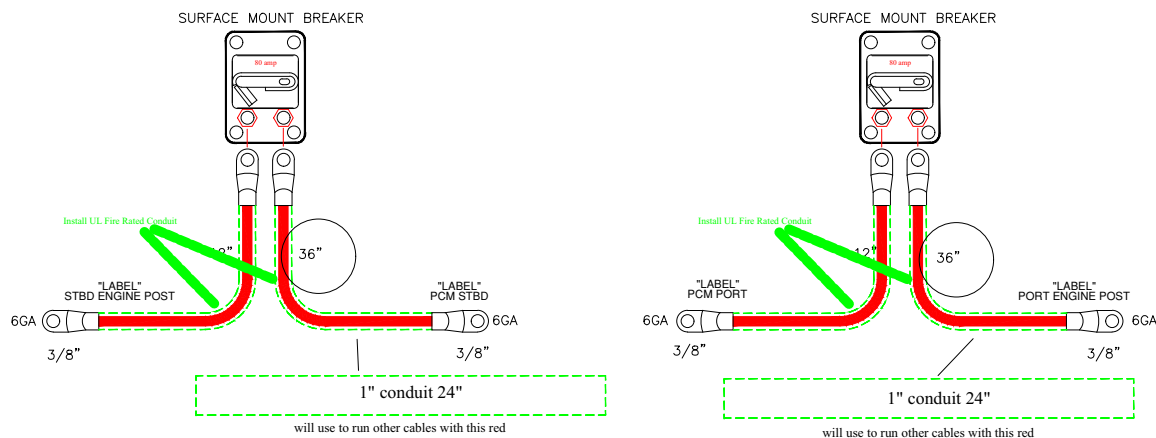
AIR CONDITIONER CABLE SET

NOTES:

- (1) ALL RING TERMINALS ARE TO BE MECHANICAL CRIMPED AND ADHESIVE-LINED HEAT SHRUNK
- (2) TAG ALL CABLES AS SHOWN WITHIN 1-1/2" OF TERMINALS
- (3) CABLE TIE "TAG" (SHOWN ON TOP) TO BATTERY KIT.
- (4) BOX COMPLETED BATTERY KIT ASSEMBLY.

BREAKER ASSEMBLY - 80-AMP HELM MASTER (P/N 7379) – OPTIONAL

BREAKER KIT- HELM-MASTER-80AMP- SFX-735-328A



NOTES:

- (1) ALL RING TERMINALS ARE TO BE MECHANICAL CRIMPED AND ADHESIVE-LINED HEAT SHRUNK
- (2) TAG ALL CABLES AS SHOWN WITHIN 1-1/2" OF TERMINALS
- (3) CABLE TIE "TAG" (SHOWN ON TOP) TO BATTERY KIT.
- (4) BOX COMPLETED BATTERY KIT ASSEMBLY.



This Page Intentionally Left Blank



Sea Fox Boat Company, Inc.
2550 Highway 52
Moncks Corner, SC 29461-5024

Telephone: 843-761-6090
www.seafoxboats.com

Ken Cook Co.
Printed in U.S.A.
Rev 0819