



## Owner's Manual Supplement

[www.SeaFoxBoats.com](http://www.SeaFoxBoats.com)

## **SEA FOX BOAT'S DISCLAIMER**

The following Owner's Manual is provided for information and educational purposes only and is not intended to offer or provide legal advice or create a contractual relationship between Sea Fox Boat Company and the owner of any Sea Fox brand vessel. Please beware that as a vessel owner you have non-delegable responsibilities regarding the safety, maintenance, fitness, and operation of your vessel and the extent of such responsibilities is ultimately determined by Federal law and regulations, the general maritime law of the United States, the laws and regulations of the states and territories of the United States, or the laws and regulations of the country where you operate your vessel. To fully understand your responsibilities as a vessel owner, and before operating or letting any third-party operate your vessel, we recommend that you consult the services of a qualified lawyer in admiralty and maritime law.

## TABLE OF CONTENTS

Introduction . . . . .	3	Harness & Panel Cooler Slide . . . . .	17
Specifications . . . . .	3	Harness – JL Stereo . . . . .	18
Designated Occupant Seating . . . . .	4	Harness Windlass Panel . . . . .	19
Plumbing Schematics . . . . .	5	Harness ACC w/ Len/Orb Deutsch (P/N 6979) . . . . .	20
Commander Aquarium Livewell System . . . . .	5	Harness Battery Cable Set EPS (P/N 6980) . . . . .	21
Commander Bilge System . . . . .	6	Harness Deck (P/N 6985) . . . . .	22
Commander Center Livewell System . . . . .	7	U Panel Switch/Harness Ultima (P/N 6997) . . . . .	23
Commander Drains, Hull . . . . .	8	Panel Box Junction Console (P/N 7137) . . . . .	24
Commander Drains, Hull (Continued) . . . . .	9	Panel Breaker Con w/ Battery Switch (P/N 7138) . . . . .	25
Commander Drains, Hull (Continued) . . . . .	10	Panel Switch Deutsch (P/N 7139) . . . . .	26
Commander Fresh Water System . . . . .	11	Panel Switch, Remote Battery Helm (P/N 7332) – Optional . . . . .	27
Commander Fuel System . . . . .	12	Breaker Kit - 60-Amp EPS (P/N 7378) . . . . .	28
Commander Mister Pump System . . . . .	13	Electric Flush Discharge Switch Panel (P/N 6136) – Optional . . . . .	29
Commander Raw Water System . . . . .	14	Electric Flush Switch Panel (P/N 6870) – Optional . . . . .	30
Commander Waste System . . . . .	15	Breaker Kit 80-Amp – Helm Master (P/N 7379) – Optional . . . . .	31
Electrical Schematics . . . . .	16		
Twin Engine with 4-Battery Setup and Charger . . . . .	16		



This Page Intentionally Left Blank

## INTRODUCTION

**Congratulations and Welcome Aboard!** With so many boat brands to choose from, we want to congratulate you on your decision to choose Sea Fox Boats. For more than 24 years, Sea Fox offers the finest hand-crafted saltwater boats carefully balanced with the build-quality, features, styling and performance for the fairest price. Our passion for boating is evident in every model we make and we appreciate that you've noticed the Sea Fox difference.

We share your love for the moments spent on the water with friends and family, which is why every Sea Fox boat offers a unique blend of fishing/family options, technologies and innovative features. Your choice of a Sea Fox affirms that you have performed your research and compared the value of your model with the competition.

Whether you are new to the boating lifestyle or an old salt, we ask that **you and all other operators** read the owner's manual, this supplement, and all other literature provided with the boat **before** operating the boat or any equipment. We also recommend that all operators enroll in a boating safety course available online - see References and Contact Information in this section for education resources online.

This supplement contains model-specific information not included with the owner's manual. This manual is not intended to be a replacement for specific product literature provided by engine, accessory or other major equipment manufacturers, but rather to supplement that information.

Because of our philosophy of continuous product improvement, this manual serves as a general guide only, so the specifications and illustrations used may not match the equipment on your boat and are intended only as general reference views.

*We welcome you to the Sea Fox family and wish you many years of boating enjoyment!*

## SPECIFICATIONS

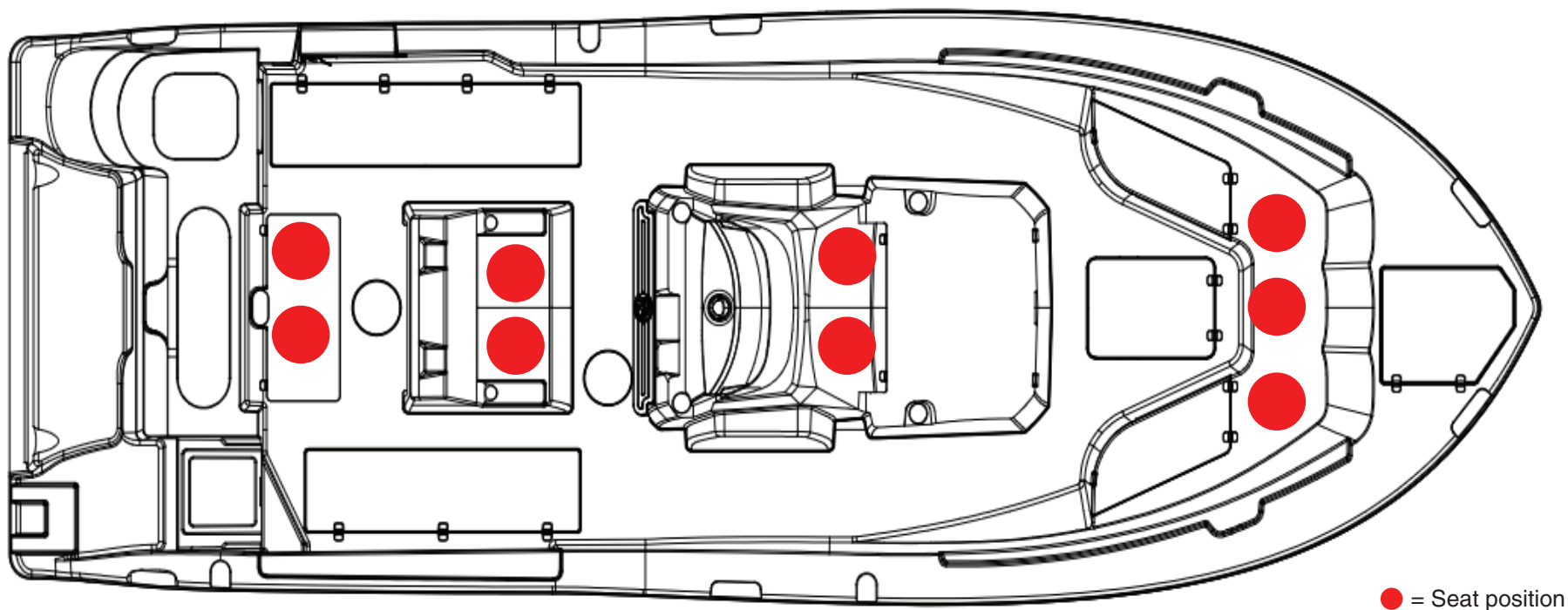
Max. Weight Capacity	Yacht Certification
Persons	Yacht Certification
Persons Weight	Yacht Certification
Max. HP	600 hp (447 kw)
L.O.A.	28' (8.5 m)
Beam	9' 8" (2.9 m)
Draft	18 in. (0.46 m)
Height, Keel to Top (Light Folded)	*
Bridge Clearance Hard Top	100 in. (2.54 m)
Max. Weight Boat (w/ Fluids, Largest HP)	9240 lbs (4191 kg)
Fuel Tank Capacity	186 gal (700 L)
Freshwater Tank Capacity	26 gal (98 L)
Holding Tank Capacity	12 gal (45 L)

\* Keel to Top - 118 in. (3 m), W/outriggers - 121 in. (3.07 m), W/radar - 122 in. (3.10 m)



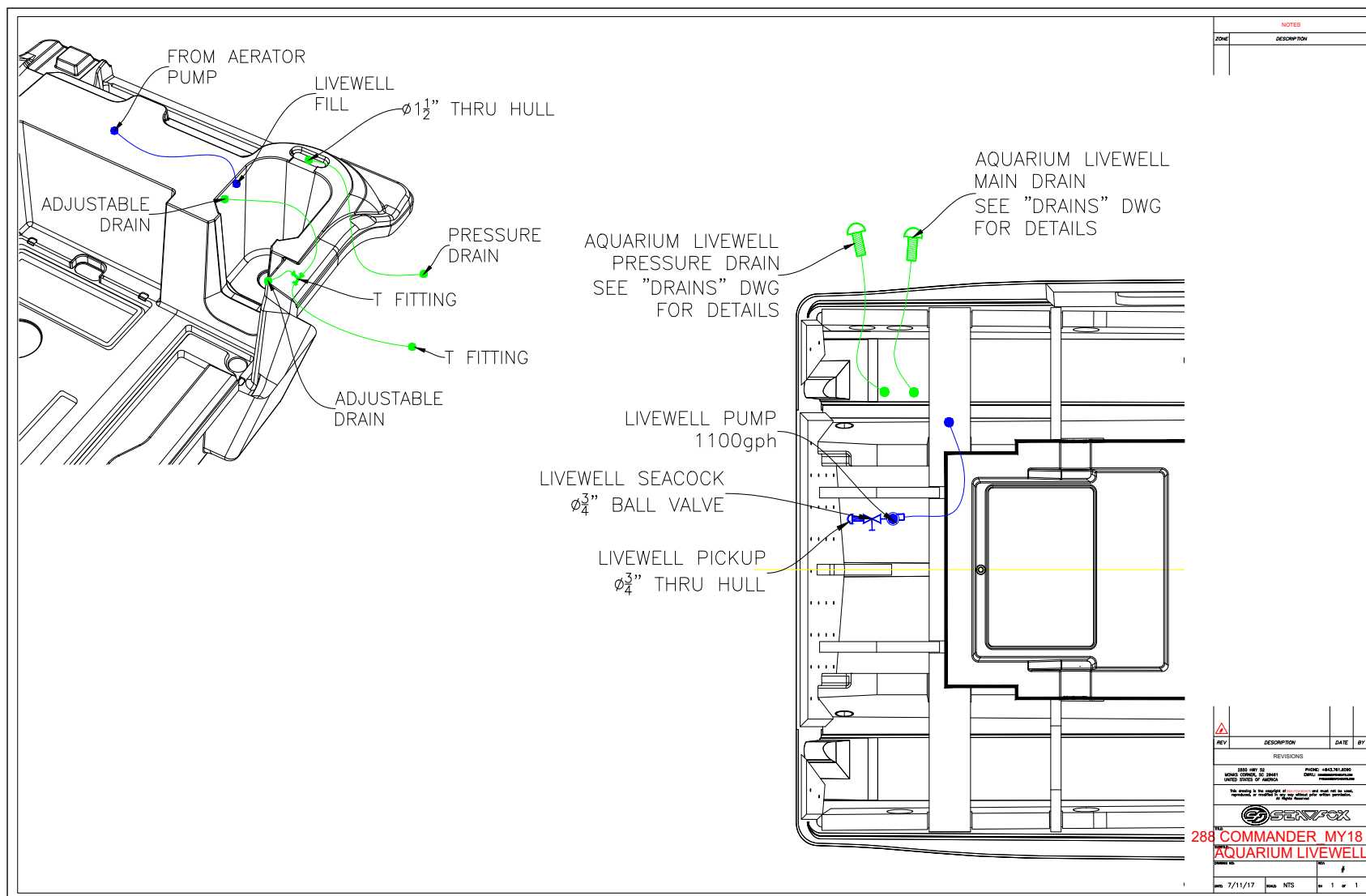
## DESIGNATED OCCUPANT SEATING

Be sure all passengers are properly seated in designated seating positions and not riding on the bow, bow pulpit, deck, gunwale or rear sun deck while underway. Passengers must use hand-holds and use caution when riding in the bow. Move to the aft passenger seats during rough water operation or if visibility is restricted.



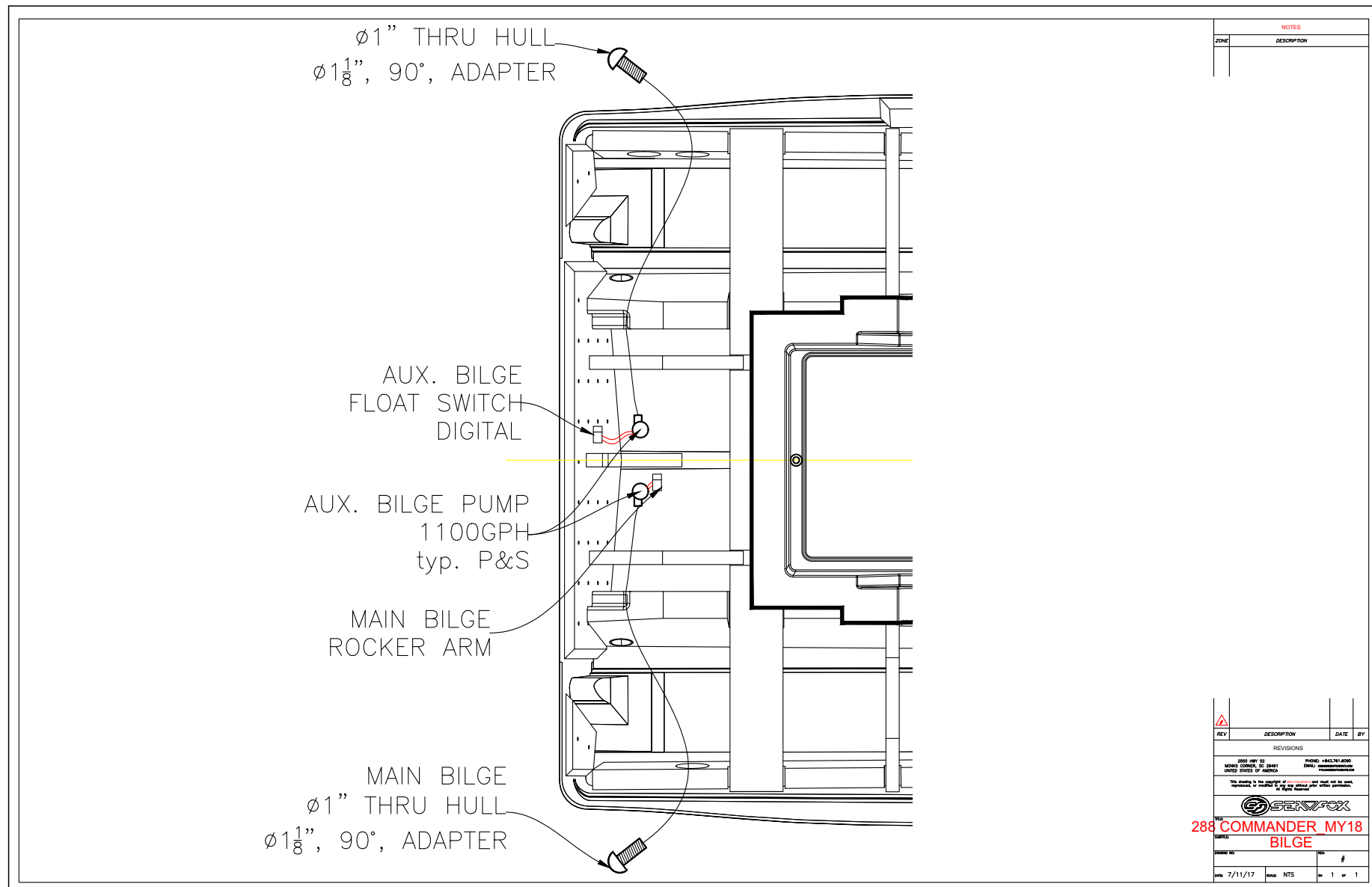
## PLUMBING SCHEMATICS

### COMMANDER AQUARIUM LIVEWELL SYSTEM





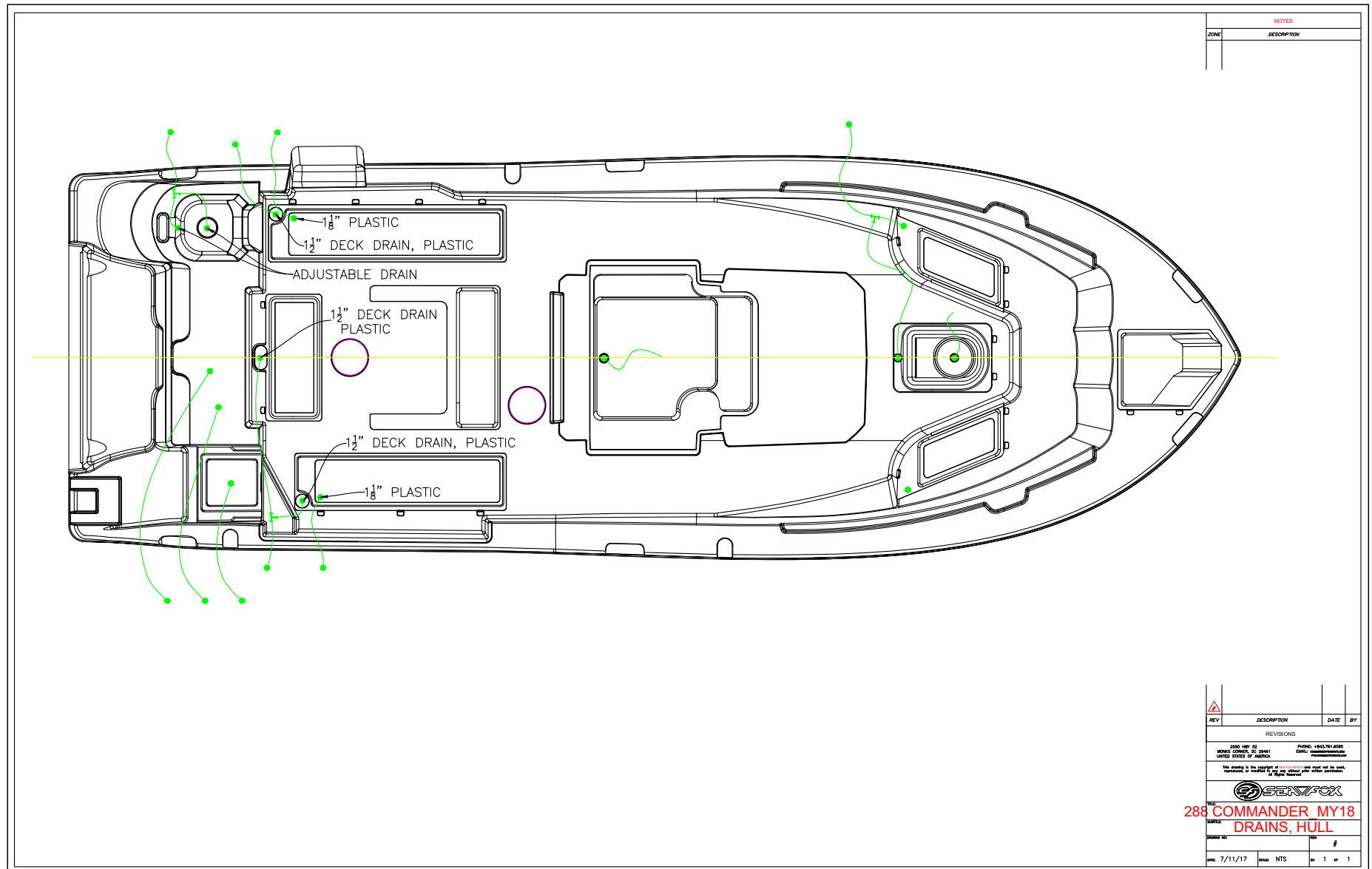
## COMMANDER BILGE SYSTEM







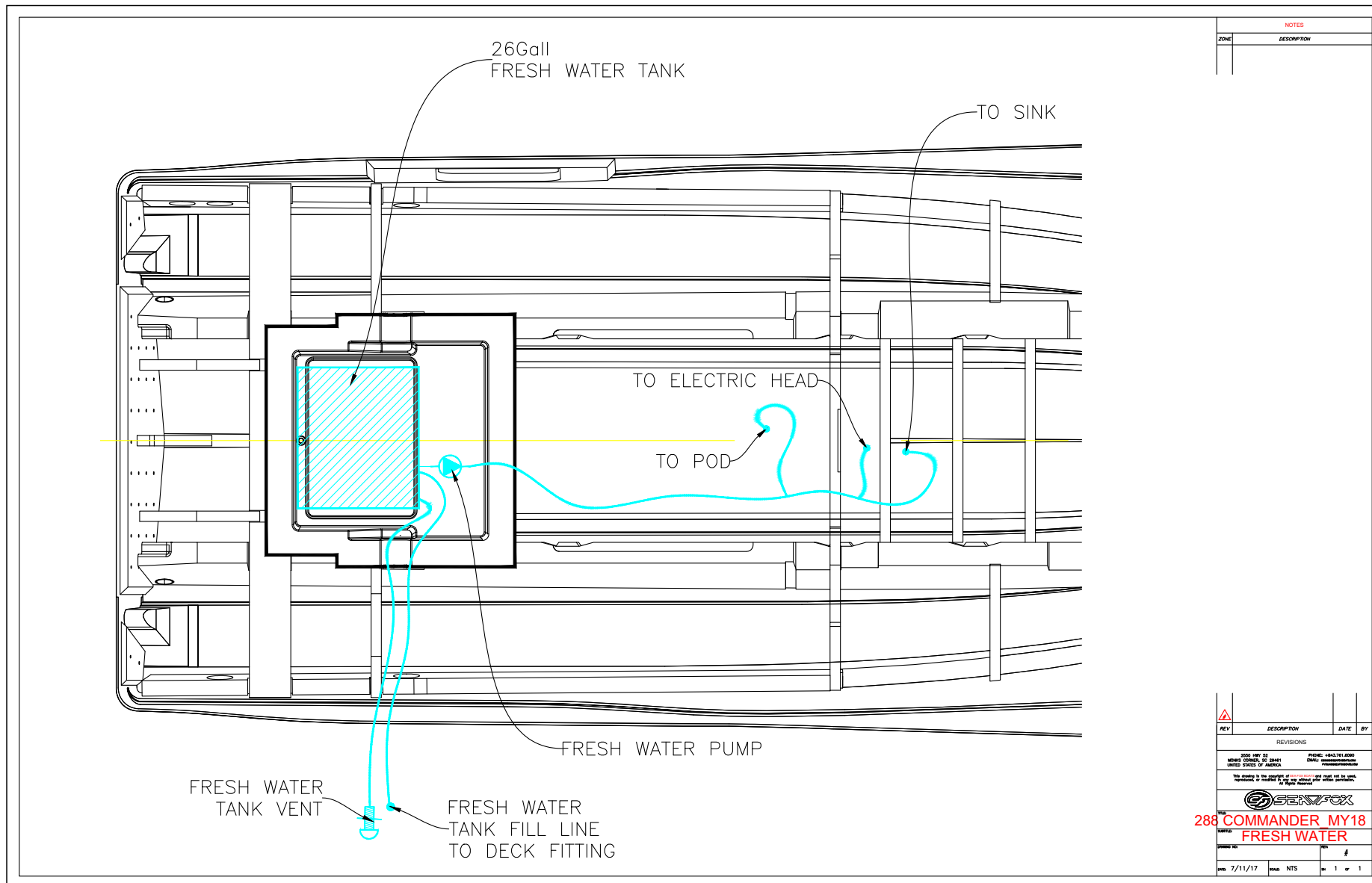
## COMMANDER DRAINS, HULL



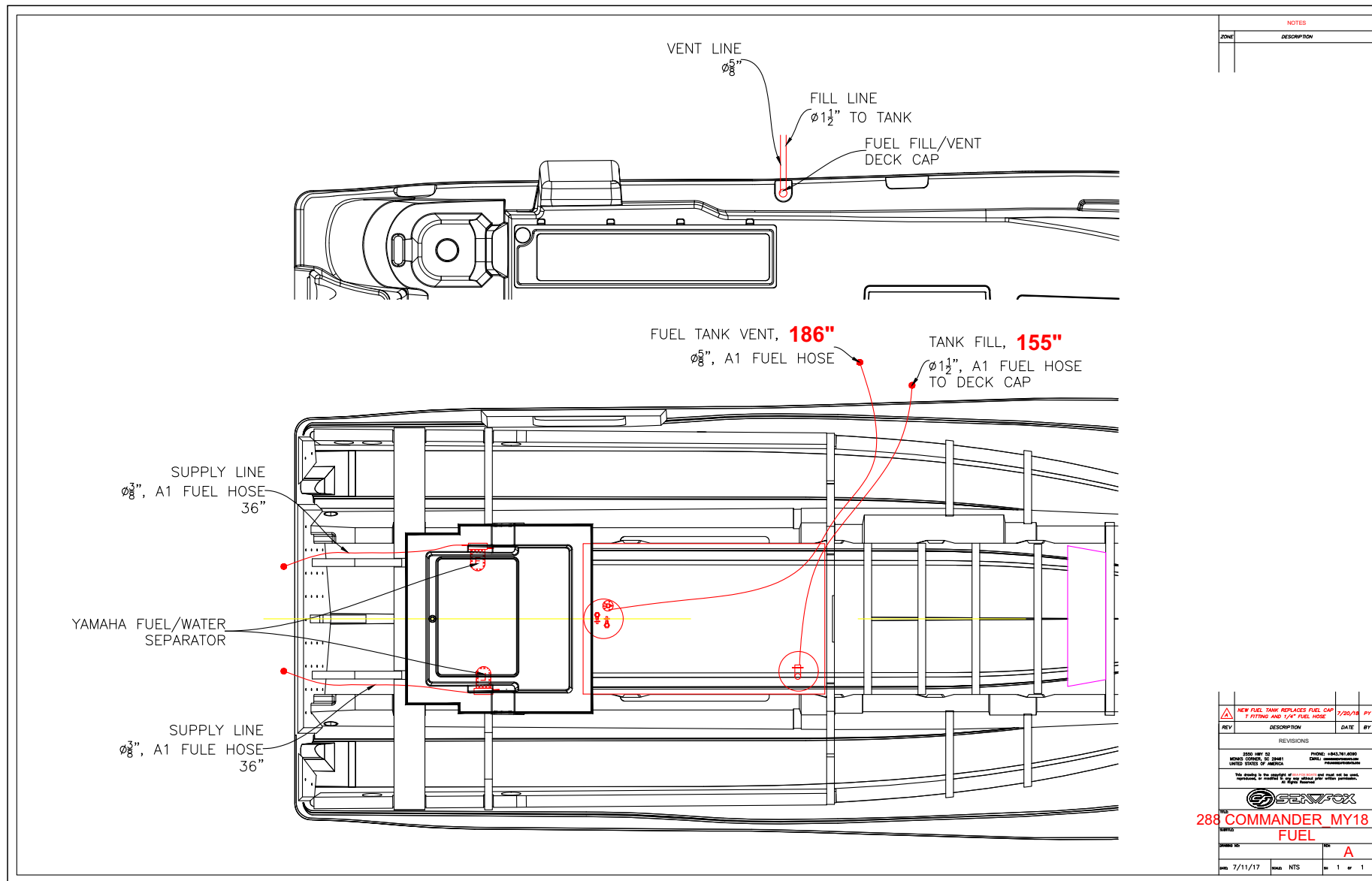




## COMMANDER FRESH WATER SYSTEM

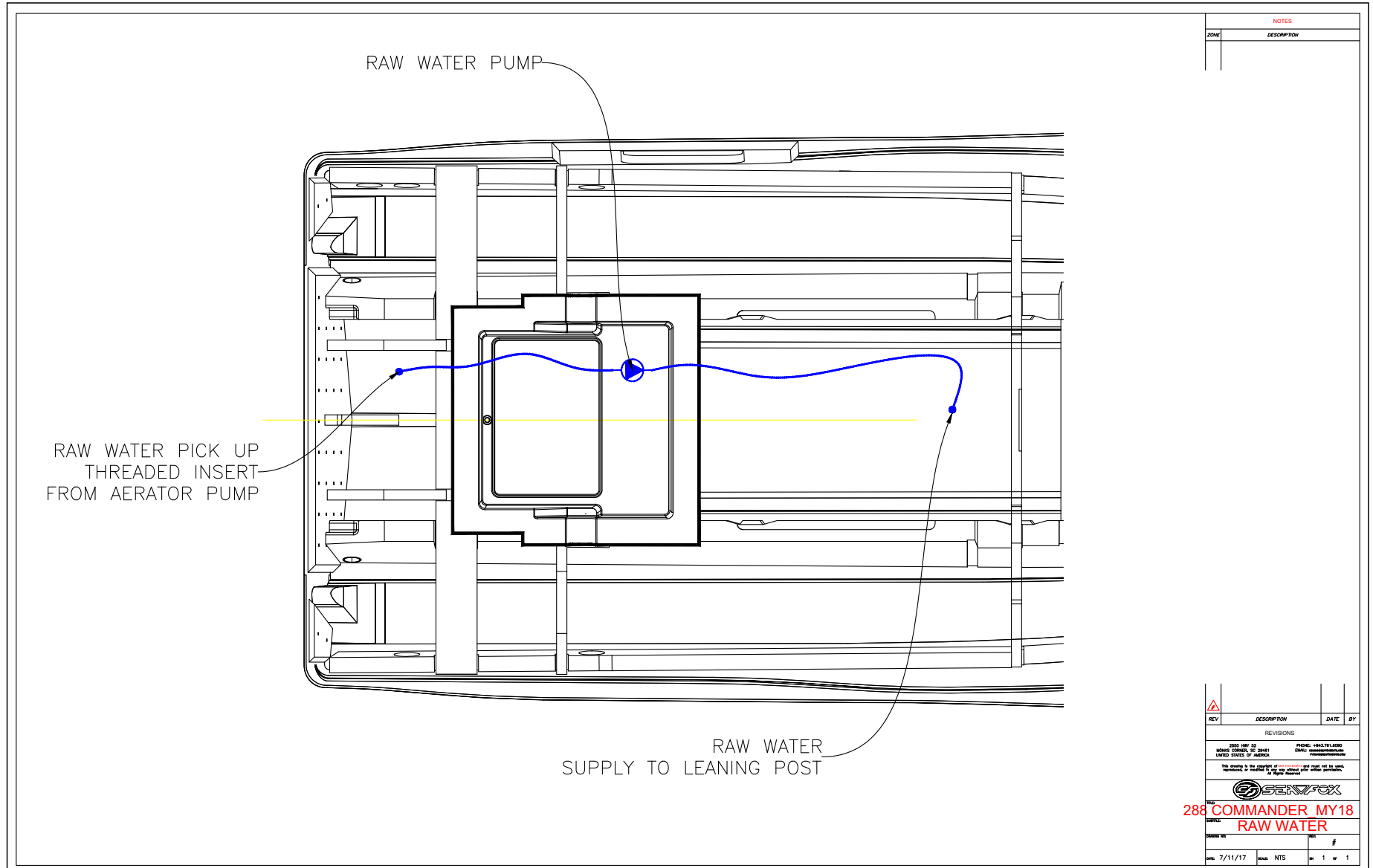


## COMMANDER FUEL SYSTEM



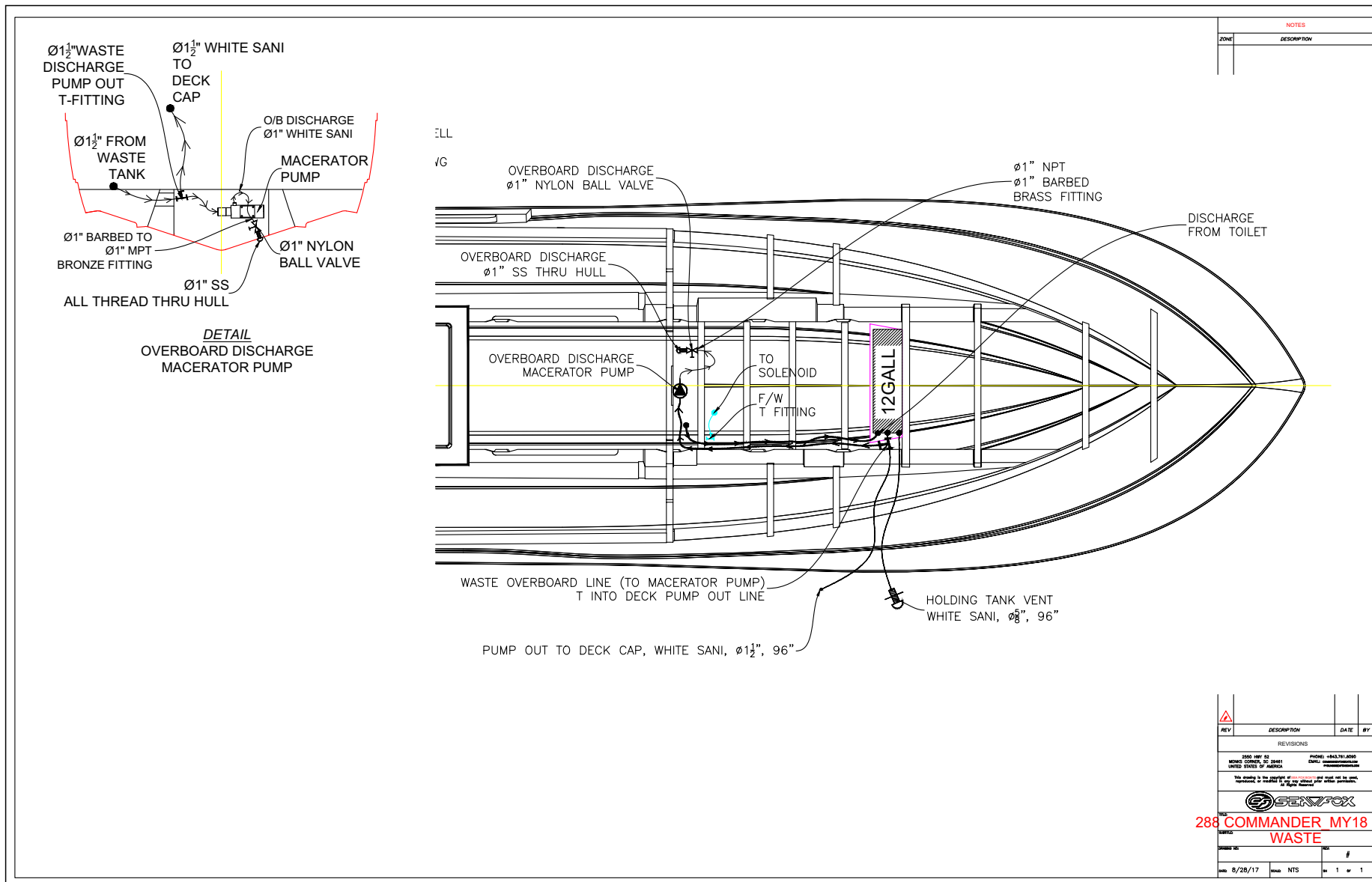


## COMMANDER RAW WATER SYSTEM



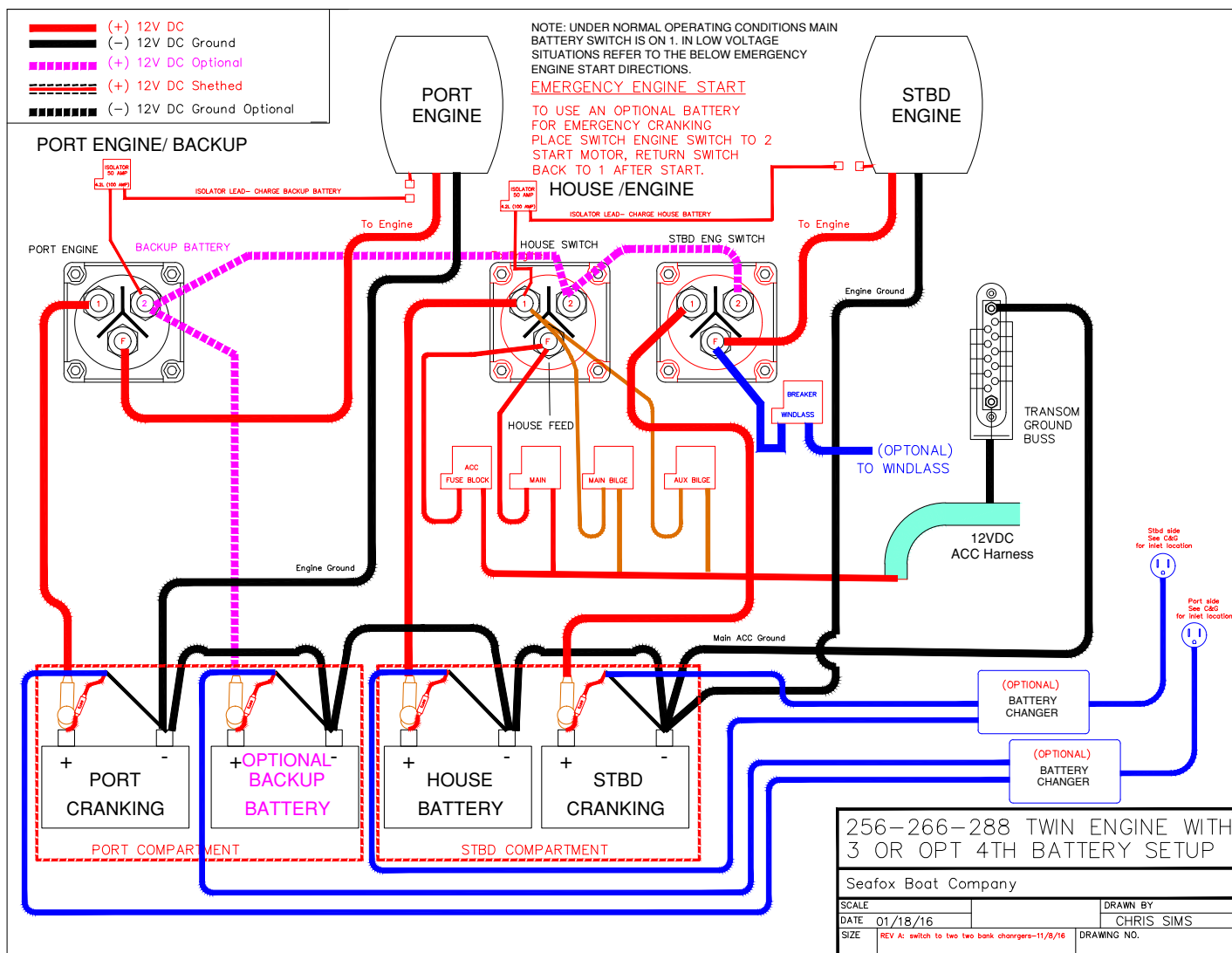


## COMMANDER WASTE SYSTEM

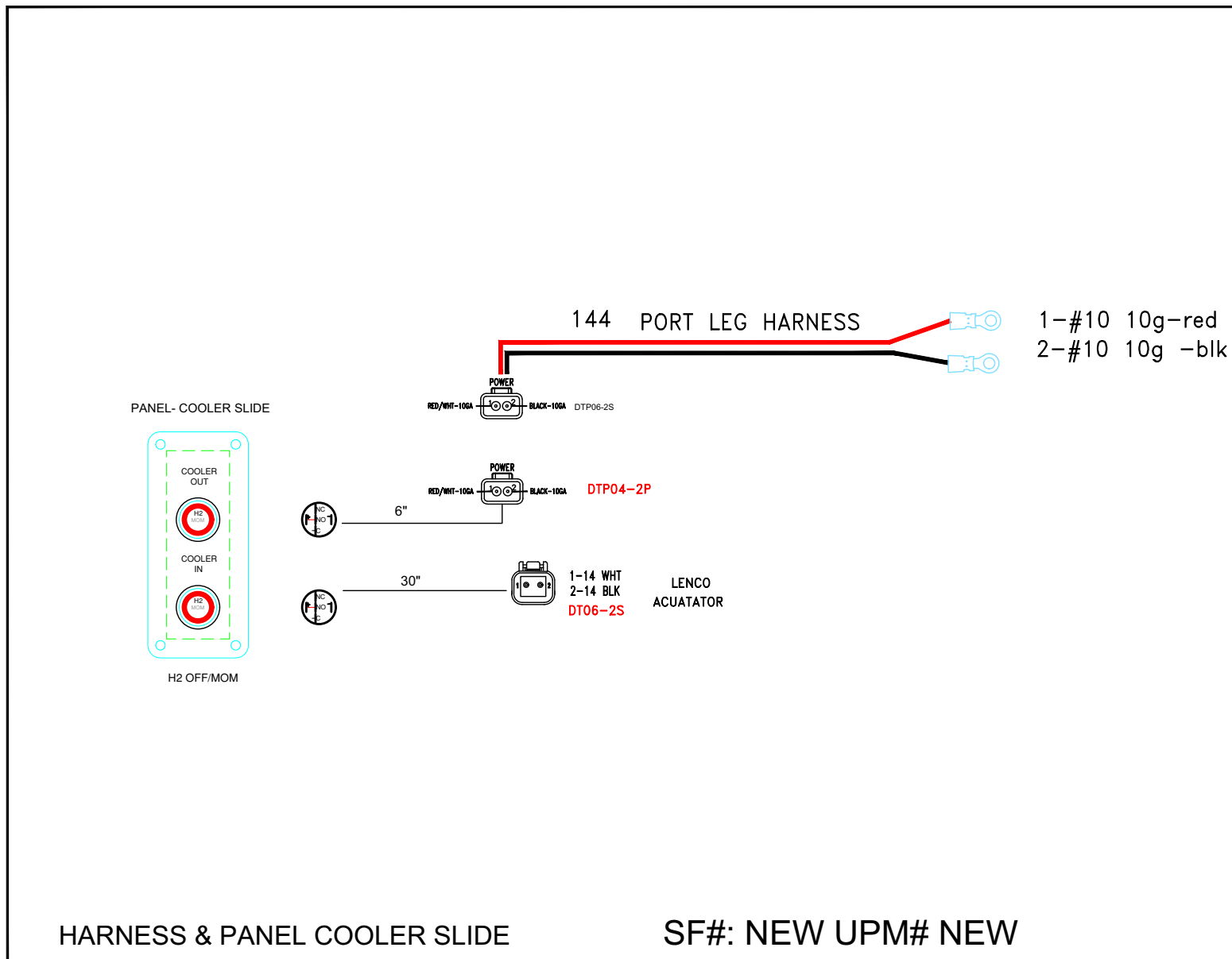


## ELECTRICAL SCHEMATICS

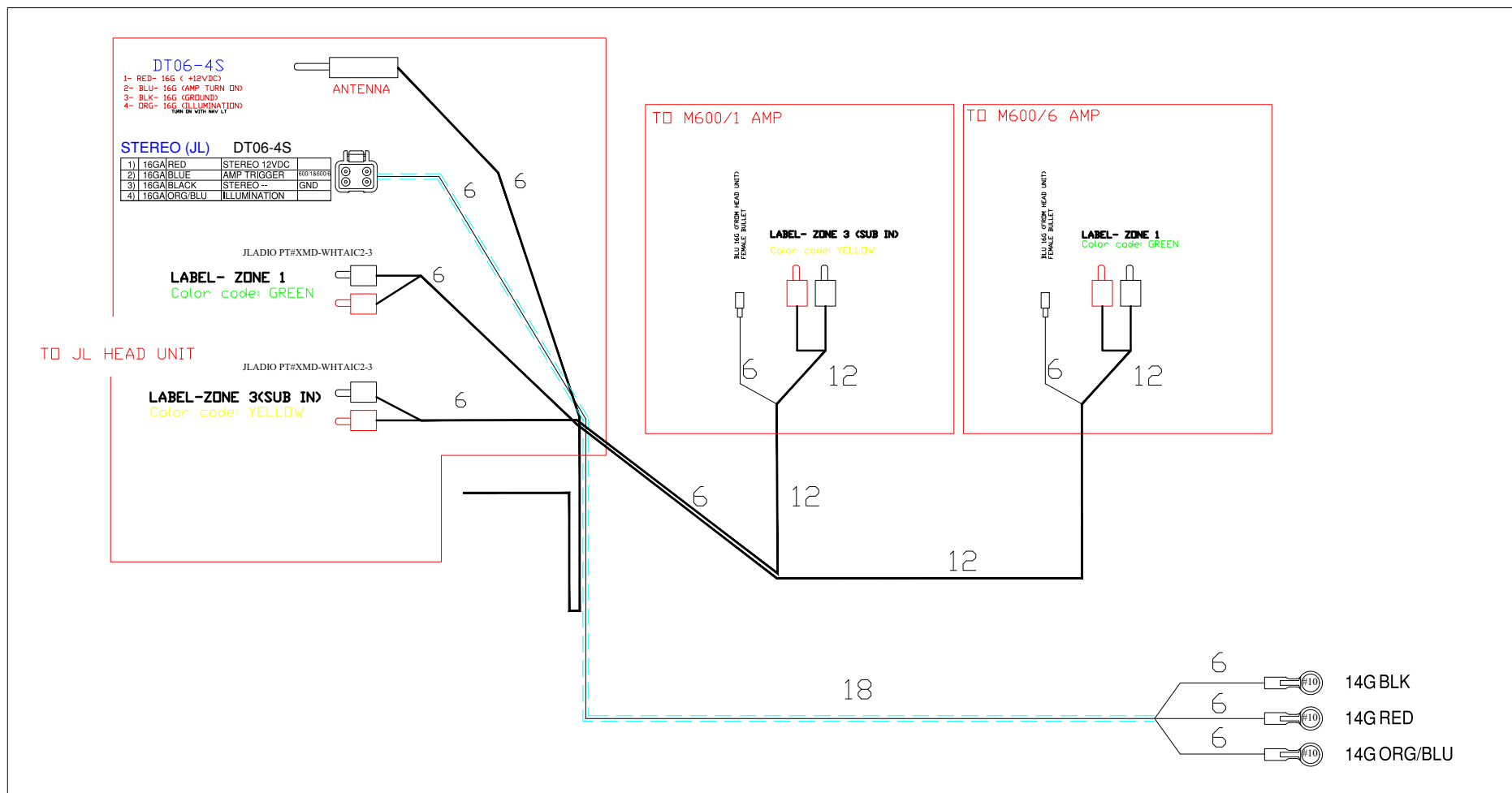
### TWIN ENGINE WITH 4-BATTERY SETUP AND CHARGER



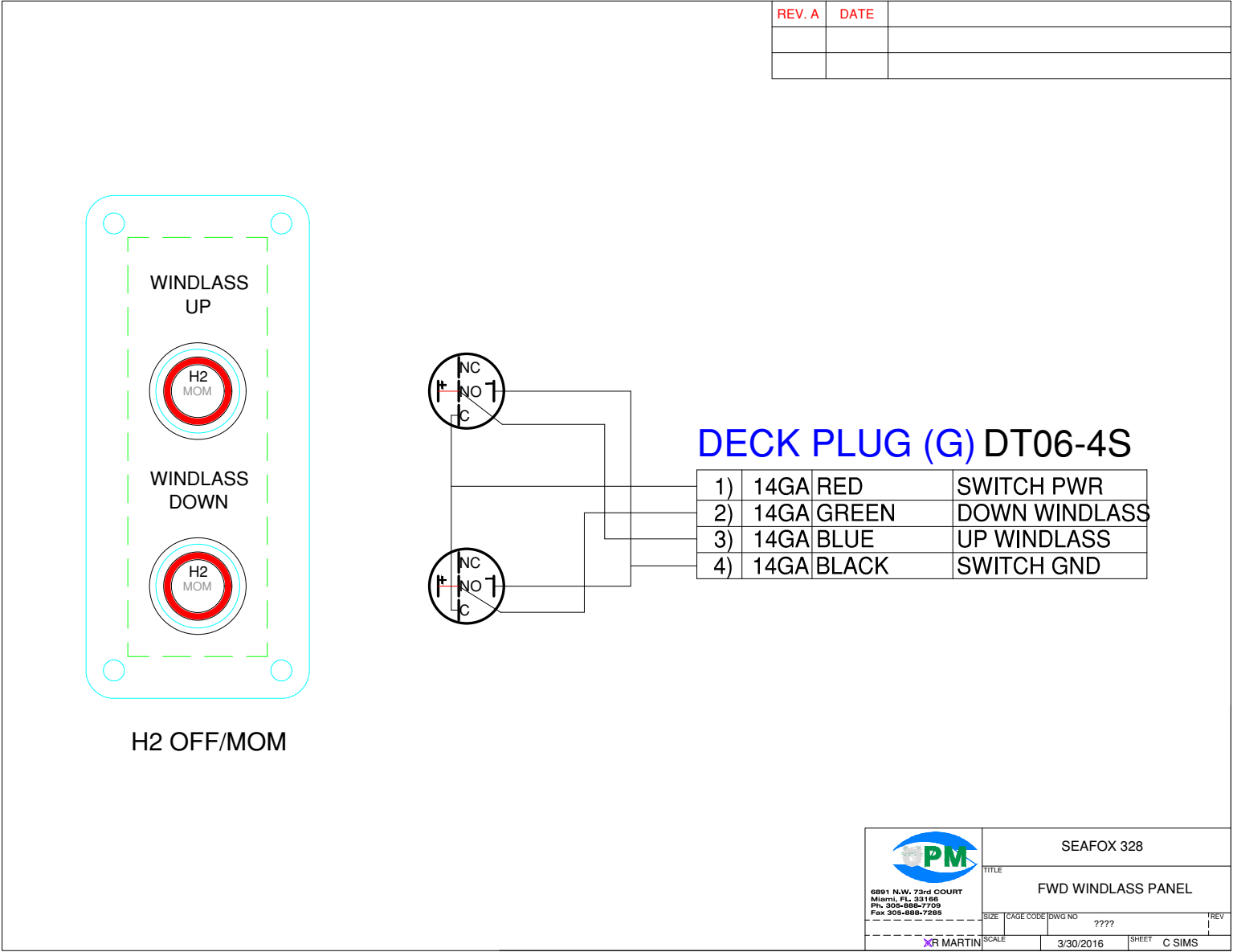
## HARNESS & PANEL COOLER SLIDE



## HARNESS – JL STEREO

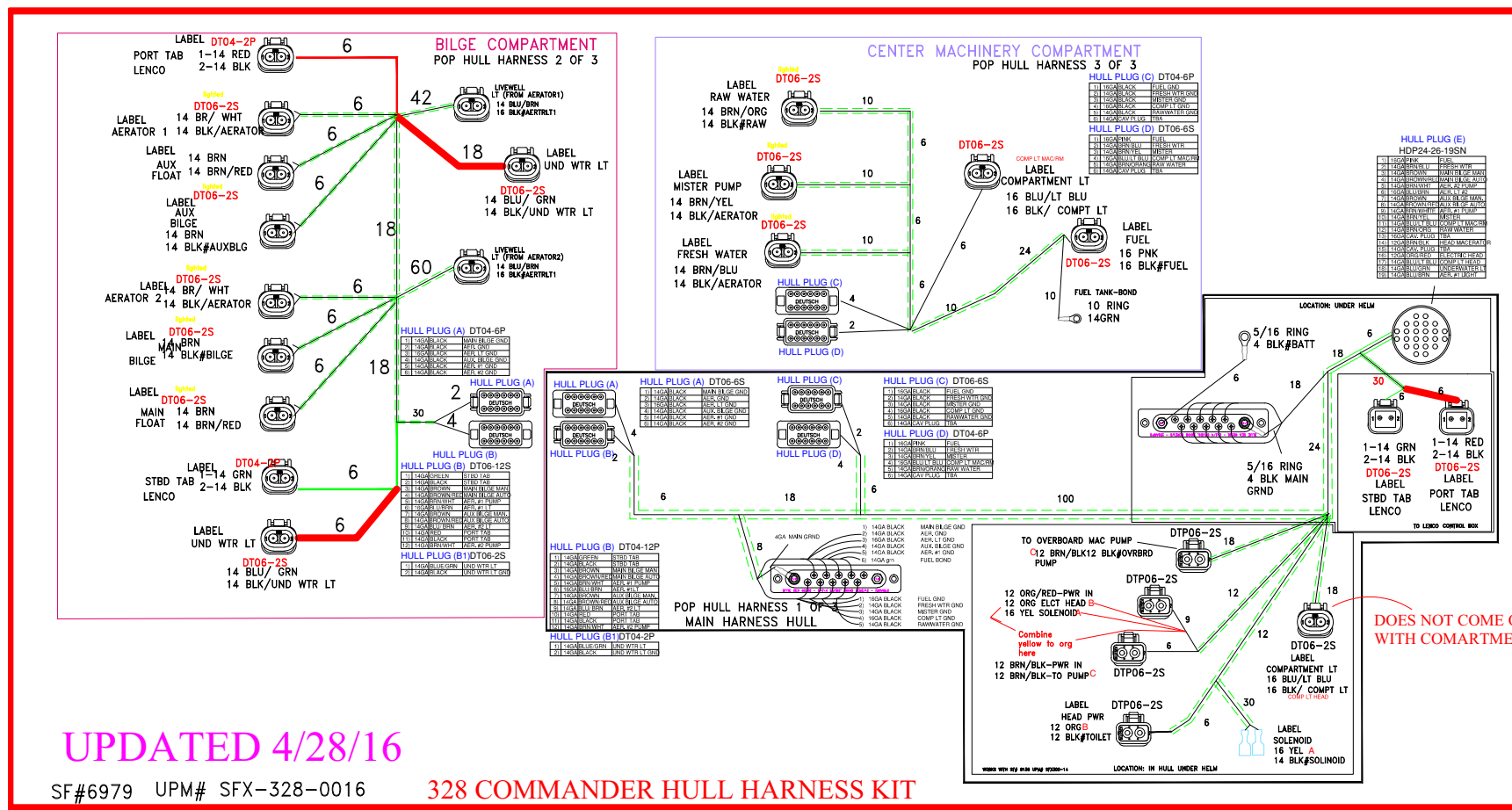


HARNESS WINDLASS PANEL



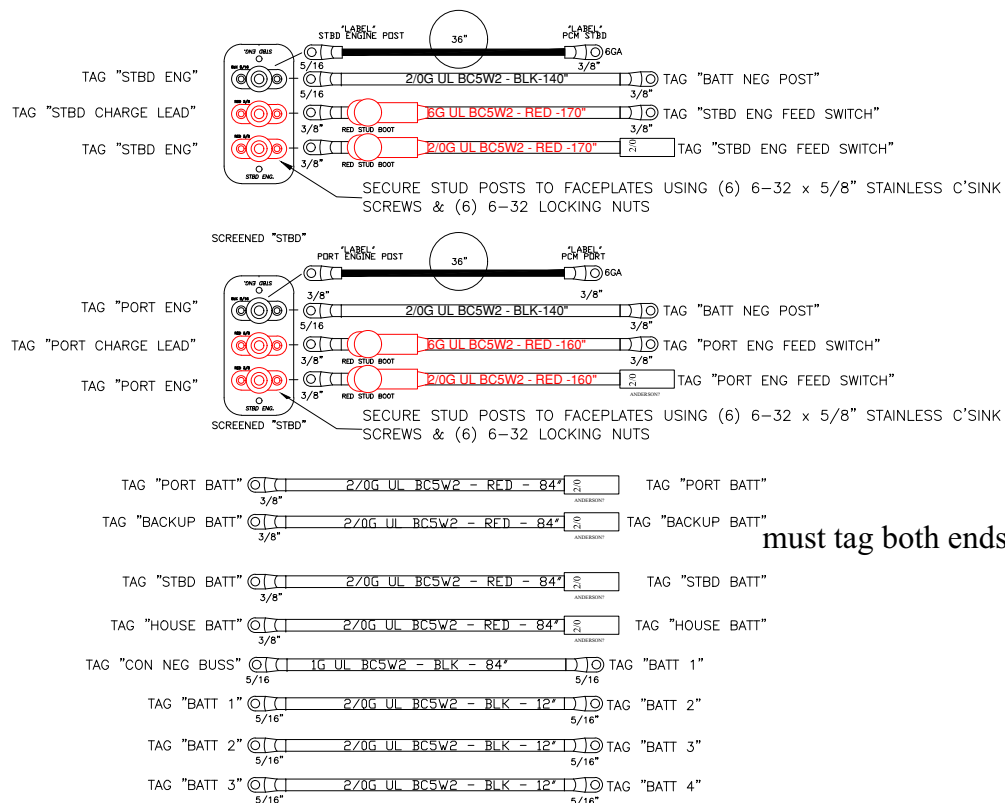
# SFX-328-0016

## HARNESS, HULL KIT 328



## HARNESS BATTERY CABLE SET EPS (P/N 6980)

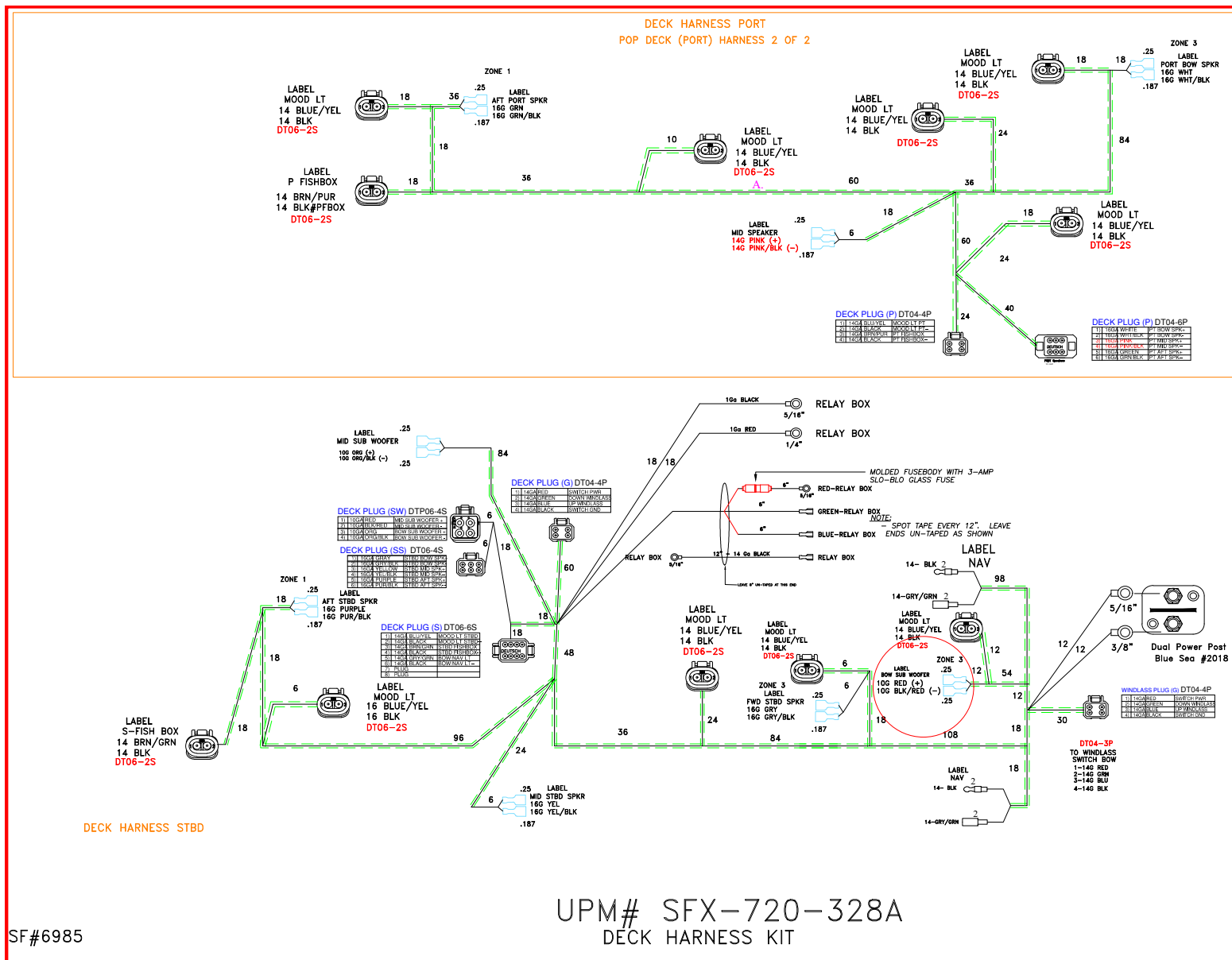
### BATTERY CABLE SET HULL 328 SF# 6980 UPM# SFX-721-328B



#### NOTES:

- (1) ALL RING TERMINALS ARE TO BE MECHANICAL CRIMPED AND ADHESIVE-LINED HEAT SHRUNK
- (2) TAG ALL CABLES AS SHOWN WITHIN 1-1/2" OF TERMINALS
- (3) CABLE TIE "TAG" (SHOWN ON TOP) TO BATTERY KIT.
- (4) BOX COMPLETED BATTERY KIT ASSEMBLY.

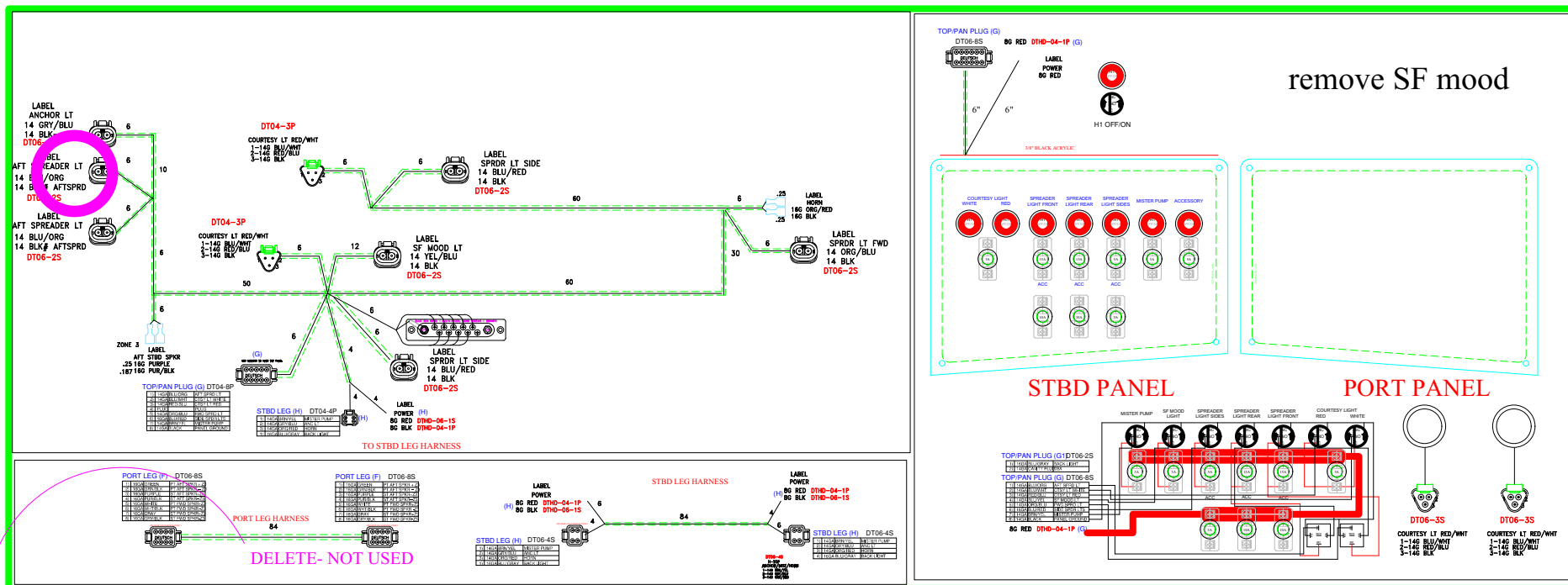
## HARNESS DECK (P/N 6985)





# U PANEL SWITCH/HARNESS ULTIMA (P/N 6997)

## SFX-305-328 HARNESS/ PANEL KIT 328



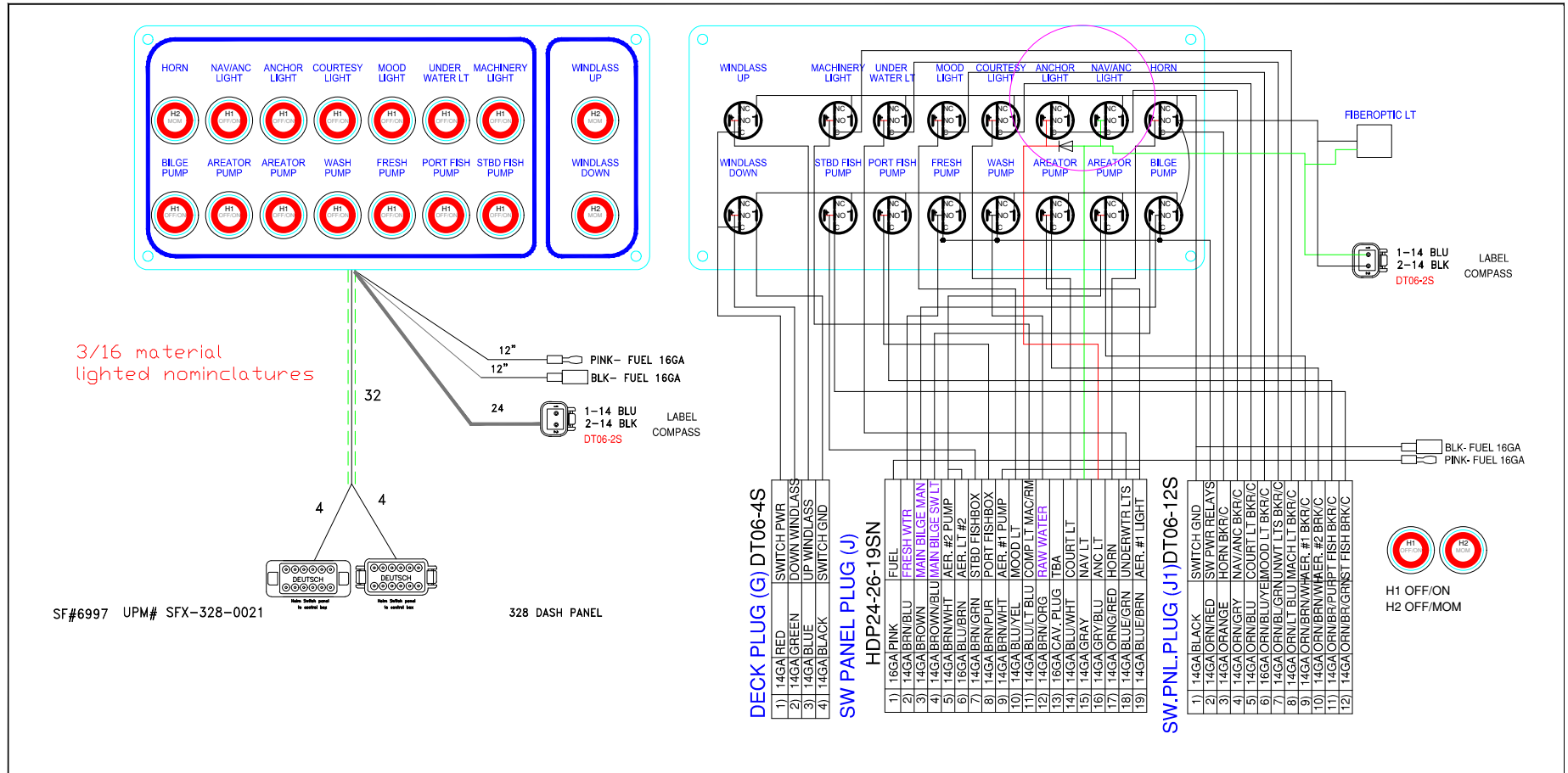
SFX-305-328A: 1) CHANGE FROM 3 WAY AND TWO WAY PLUG TO 4WAY PLUG  
FOR MISTER, NAV, BACK LIGHT AND HORN, CHANGE NOMINCLATURE FROM SF TO ACCESSORY  
2) CHANGE NOMINCLATURE FROM SF TO ACCESSORY

SFX-305-328B: 1) REMOVE SPEAKER WIRING- NOT USED FORE JL AUDIO

[illegible]

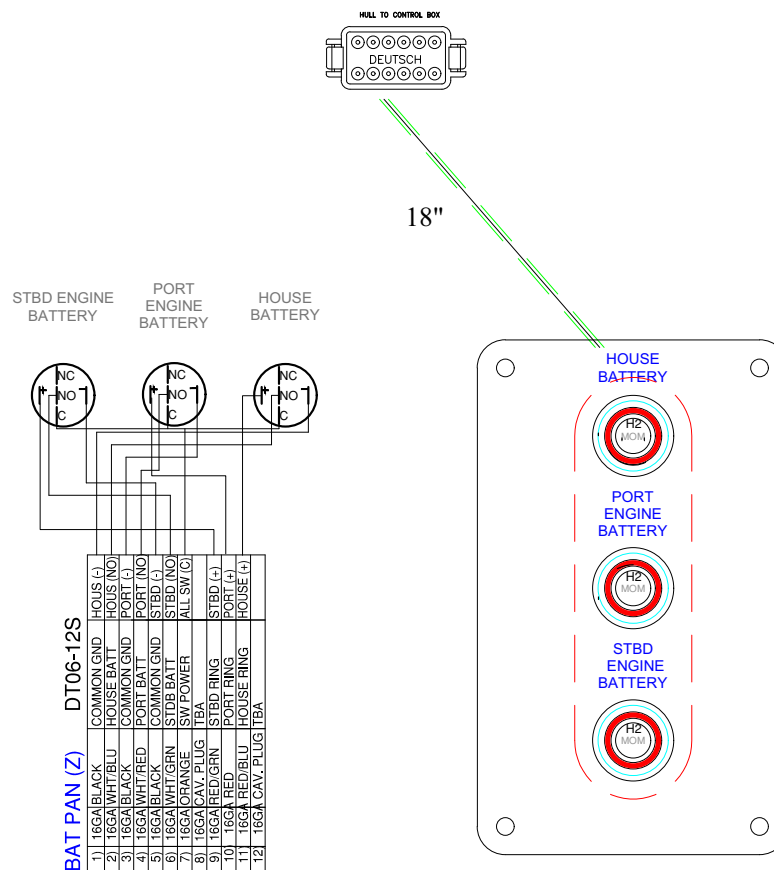


# PANEL, HELM SWITCH 328 SFX-400-328



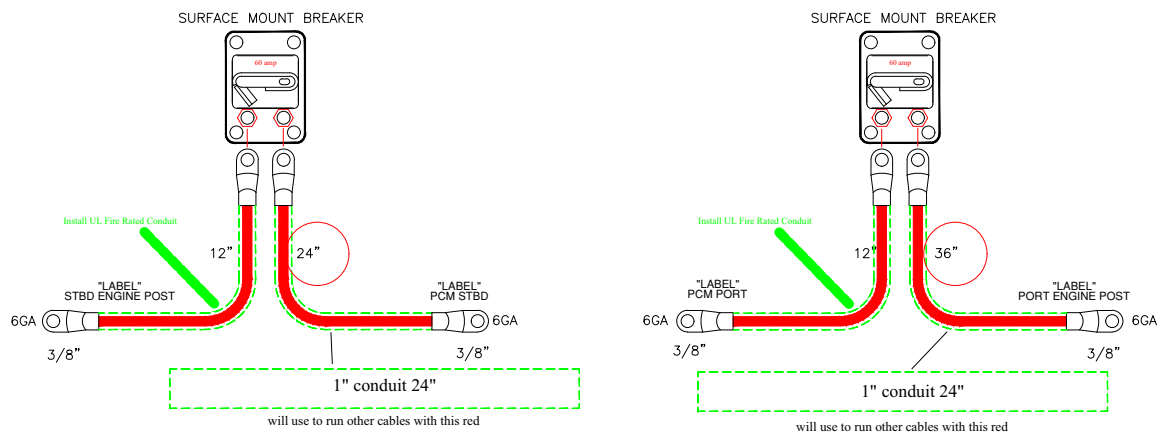
PANEL SWITCH, REMOTE BATTERY HELM (P/N 7332) – OPTIONAL

# PANEL, Remote battery 288 SFX-361-07



sf# 7332

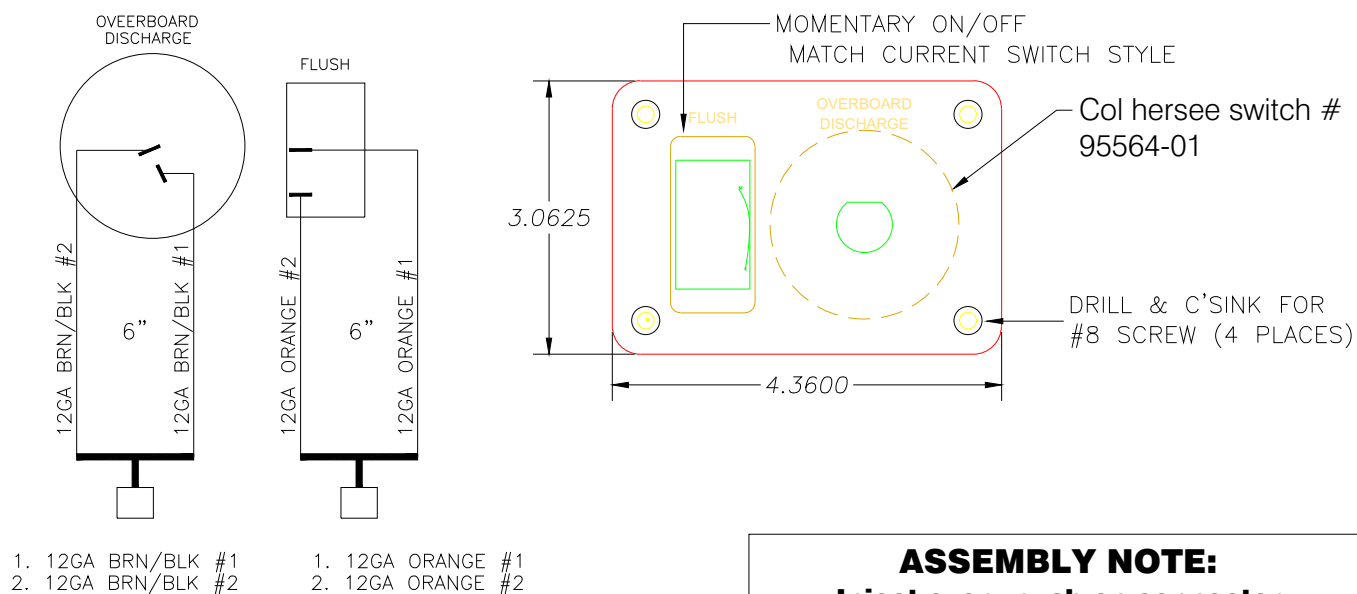
## BREAKER KIT- SEASTAR EPS-60AMP- SFX-730-328A



NOTES:

- (1) ALL RING TERMINALS ARE TO BE MECHANICAL CRIMPED AND ADHESIVE-LINED HEAT SHRUNK
- (2) TAG ALL CABLES AS SHOWN WITHIN 1-1/2" OF TERMINALS
- (3) CABLE TIE "TAG" (SHOWN ON TOP) TO BATTERY KIT.
- (4) BOX COMPLETED BATTERY KIT ASSEMBLY.

## ELECTRIC FLUSH DISCHARGE SWITCH PANEL (P/N 6136) – OPTIONAL



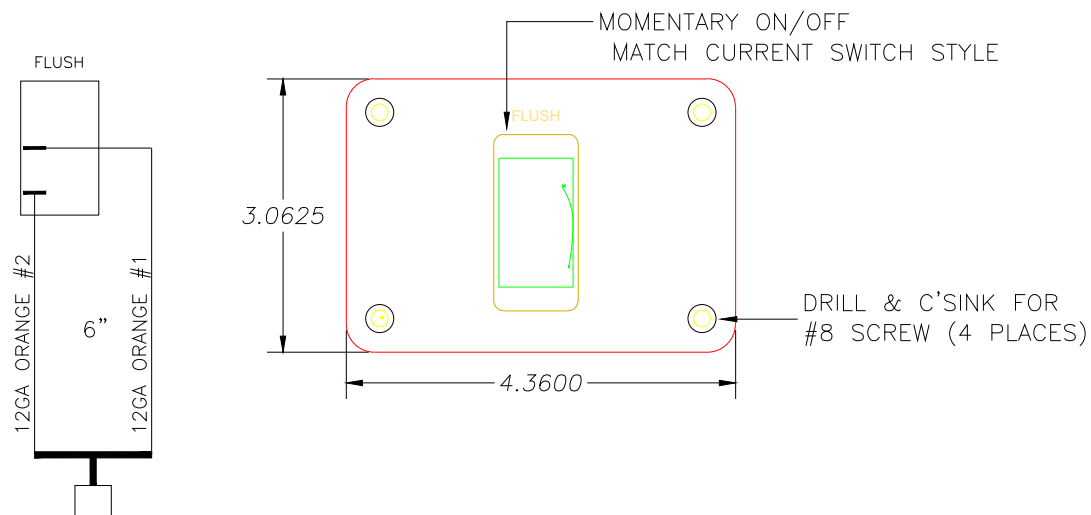
**ASSEMBLY NOTE:**  
Inject every push-on connector with dielectric grease prior to attachment to switch.

**SEAFOX PT# 6136**

Quantity	648-ALUMINUM - 6061-T6 ALUMINUM	
	Material	
Work Order Number	ELECTRIC FLUSH-DISCHARGE SWITCH PANEL - WHITE- BLACK LETTERS	
	File Number SFX300-14	
	SEAFOX BOAT COMPANY	
Due Date	07-28-15	
	Faceplate Number	Panel Number



## ELECTRIC FLUSH SWITCH PANEL (P/N 6870) – OPTIONAL



1. 12GA ORANGE #1
2. 12GA ORANGE #2

MATCH CONNECTORS TO NEW  
256CC/WA HARNESS

### NOTES:

- (1) PAINT TEXTURED BLACK
- (2) SCREEN WHITE

**ASSEMBLY NOTE:**  
Inject every push-on connector  
with dielectric grease prior to  
attachment to switch.

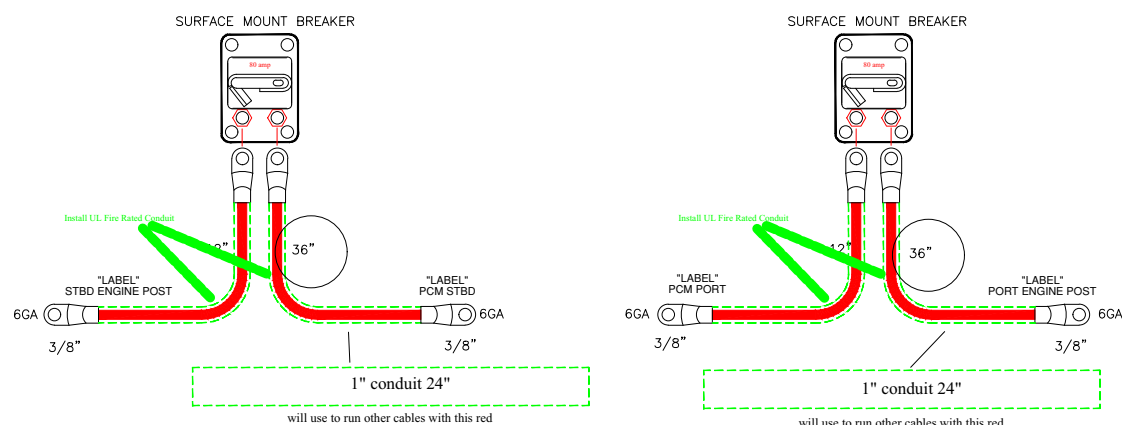
**SF# 6870 UPM# SFX-028-11**

Quantity	648-ALUMINUM - 6061-T6 ALUMINUM	
	Material	
Work Order Number	ELECTRIC FLUSH SWITCH PANEL - BLACK- WHITE LETTERS	
	File Number	
	SEAFOX BOAT COMPANY	
Due Date	07-28-15	
	Faceplate Number	Panel Number



## BREAKER KIT 80-AMP – HELM MASTER (P/N 7379) – OPTIONAL

### BREAKER KIT- HELM-MASTER-80AMP- SFX-735-328A



#### NOTES:

- (1) ALL RING TERMINALS ARE TO BE MECHANICAL CRIMPED AND ADHESIVE-LINED HEAT SHRUNK TAG ALL CABLES AS SHOWN WITHIN 1-1/2\" OF TERMINALS
- (2) CABLE TIE \"TAG\" (SHOWN ON TOP) TO BATTERY KIT.
- (3) BOX COMPLETED BATTERY KIT ASSEMBLY.



This Page Intentionally Left Blank

This Page Intentionally Left Blank



This Page Intentionally Left Blank

This Page Intentionally Left Blank



This Page Intentionally Left Blank





**Sea Fox Boat Company, Inc.**  
2550 Highway 52  
Moncks Corner, SC 29461-5024

Telephone: 843-761-6090  
[www.seafoxboats.com](http://www.seafoxboats.com)

Ken Cook Co.  
Printed in U.S.A.  
Rev 0819