



268

COMMANDER

Owner's Manual Supplement

www.SeaFoxBoats.com

SEA FOX BOAT'S DISCLAIMER

The following Owner's Manual is provided for information and educational purposes only and is not intended to offer or provide legal advice or create a contractual relationship between Sea Fox Boat Company and the owner of any Sea Fox brand vessel. Please beware that as a vessel owner you have non-delegable responsibilities regarding the safety, maintenance, fitness, and operation of your vessel and the extent of such responsibilities is ultimately determined by Federal law and regulations, the general maritime law of the United States, the laws and regulations of the states and territories of the United States, or the laws and regulations of the country where you operate your vessel. To fully understand your responsibilities as a vessel owner, and before operating or letting any third-party operate your vessel, we recommend that you consult the services of a qualified lawyer in admiralty and maritime law.

TABLE OF CONTENTS

Introduction	3	Accessory Harness	13
Specifications	3	Harness Kicker Only 6-Speaker	14
Designated Occupant Seating	4	Harness JL 6-Speaker	15
Plumbing Schematics	5	Main Switch Panel	16
Commander Bilge Pumps	5	JL Audio Breaker Panel	17
Commander Drains	6	JL Amplifier Pig Tail Kit	18
Commander Waste System	7	Harness Mood Light w/Deutsch (P/N 6128) – Optional	19
Commander Fresh Water System	8	Harness Windlass Hull Aft Battery (P/N 6134) – Optional	20
Commander Fuel System	9	Harness Windlass Deck Option (P/N 6135) – Optional	21
Electrical Schematics	10	Head Panel Switch ORB (P/N 6136) – Optional	22
Single Engine with Two-Battery Setup	10	AFT Main Breaker Panel	23
Twin Engine with Three-Battery Setup	11	Ultima Top Switch/Harness (P/N 7277) – Optional	24
Harness Nav LT LG w/Deutsch (P/N 6121)	12		



This Page Intentionally Left Blank

INTRODUCTION

Congratulations and Welcome Aboard! With so many boat brands to choose from, we want to congratulate you on your decision to choose Sea Fox Boats. For more than 24 years, Sea Fox offers the finest hand-crafted saltwater boats carefully balanced with the build-quality, features, styling and performance for the fairest price. Our passion for boating is evident in every model we make and we appreciate that you've noticed the Sea Fox difference.

We share your love for the moments spent on the water with friends and family, which is why every Sea Fox boat offers a unique blend of fishing/family options, technologies and innovative features. Your choice of a Sea Fox affirms that you have performed your research and compared the value of your model with the competition.

Whether you are new to the boating lifestyle or an old salt, we ask that **you and all other operators** read the owner's manual, this supplement, and all other literature provided with the boat **before** operating the boat or any equipment. We also recommend that all operators enroll in a boating safety course available online - see References and Contact Information in this section for education resources online.

This supplement contains model-specific information not included with the owner's manual. This manual is not intended to be a replacement for specific product literature provided by engine, accessory or other major equipment manufacturers, but rather to supplement that information.

Because of our philosophy of continuous product improvement, this manual serves as a general guide only, so the specifications and illustrations used may not match the equipment on your boat and are intended only as general reference views.

We welcome you to the Sea Fox family and wish you many years of boating enjoyment!

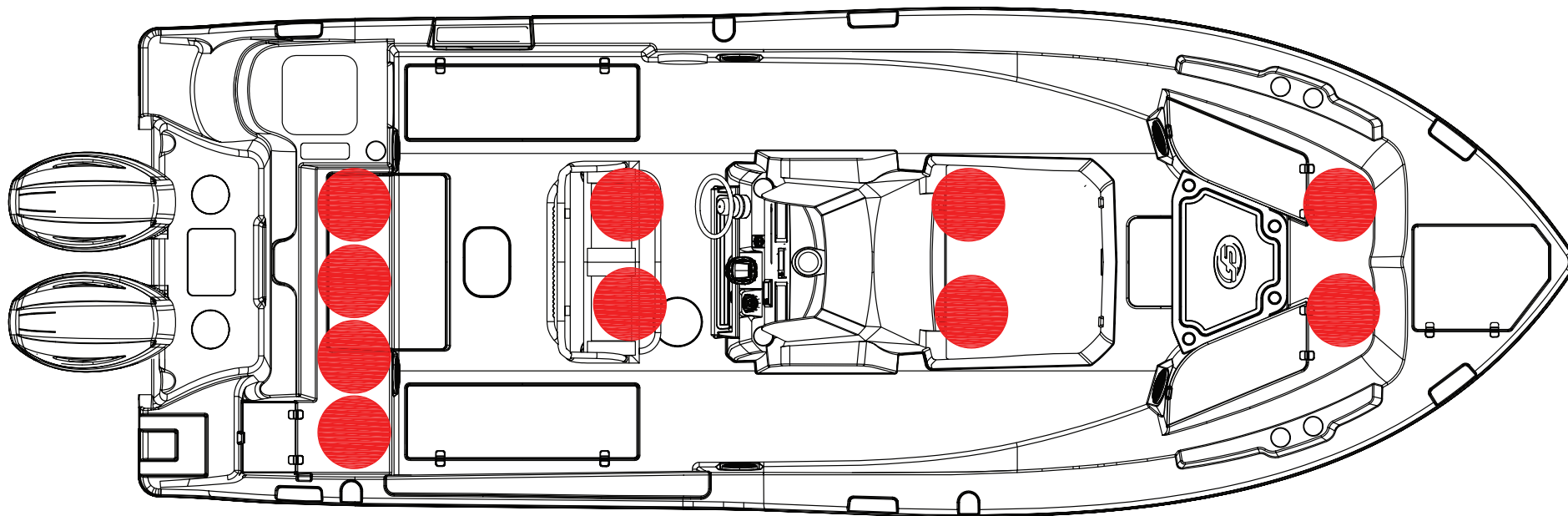
SPECIFICATIONS

Max. Weight Capacity	Yacht Certification
Persons	Yacht Certification
Persons Weight	Yacht Certification
Max. HP	400 hp (298 kw)
L.O.A.	26' (7.9 m)
Beam	9' 3" (2.8 m)
Draft	16 in. (0.41 m)
Height, Keel to Top (Light Folded)	118 in. (3 m)
Bridge Clearance Hard Top	102 in. (2.59 m)
Max. Weight Boat (w/ Fluids, Largest HP)	7850 lbs (3561 kg)
Fuel Tank Capacity	140 gal (530 L)
Freshwater Tank Capacity	12 gal (45 L)
Holding Tank Capacity	12 gal (45 L)



DESIGNATED OCCUPANT SEATING

Be sure all passengers are properly seated in designated seating positions and not riding on the bow, bow pulpit, deck, gunwale or rear sun deck while underway. Passengers must use hand-holds and use caution when riding in the bow. Move to the aft passenger seats during rough water operation or if visibility is restricted.

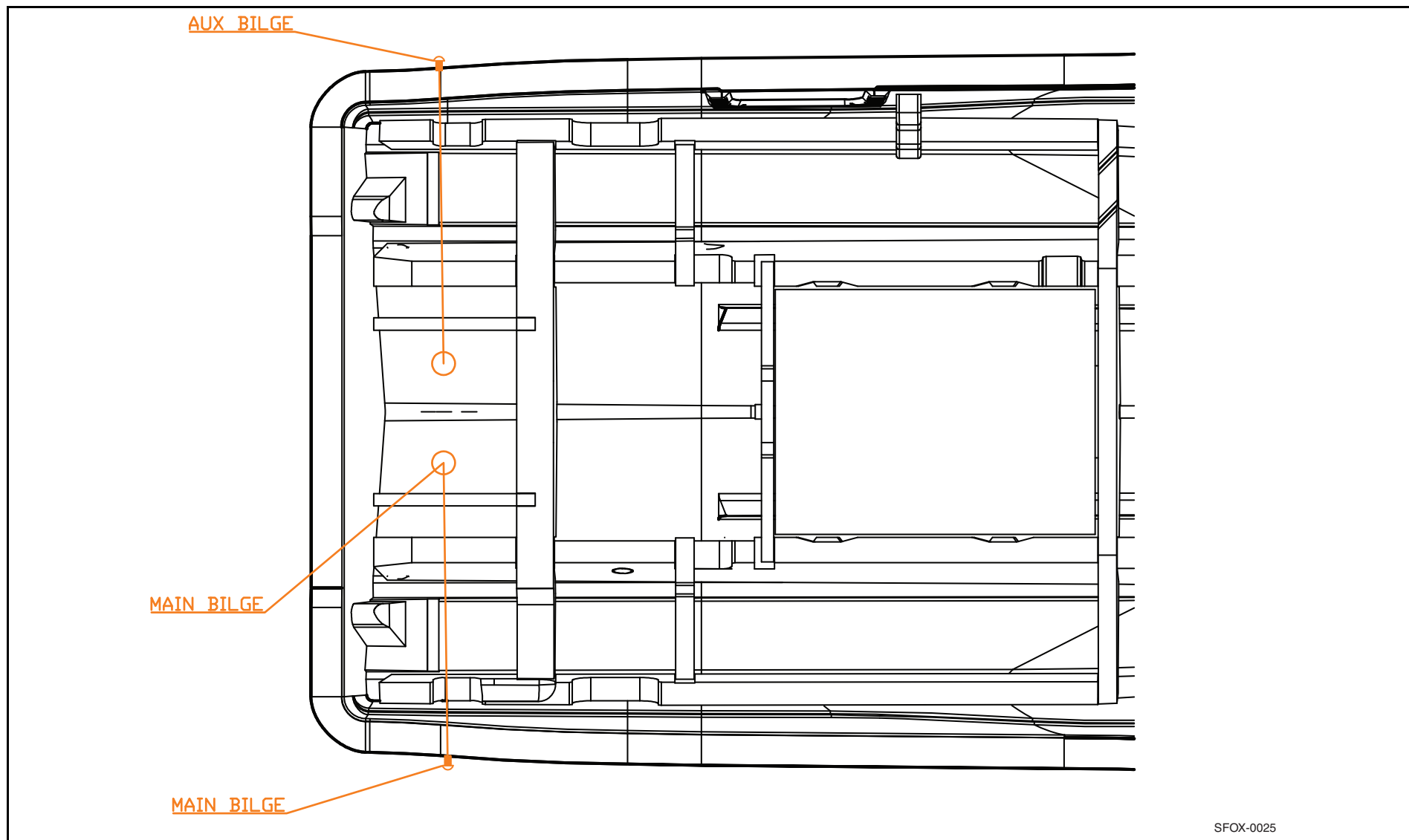


● = Seat position

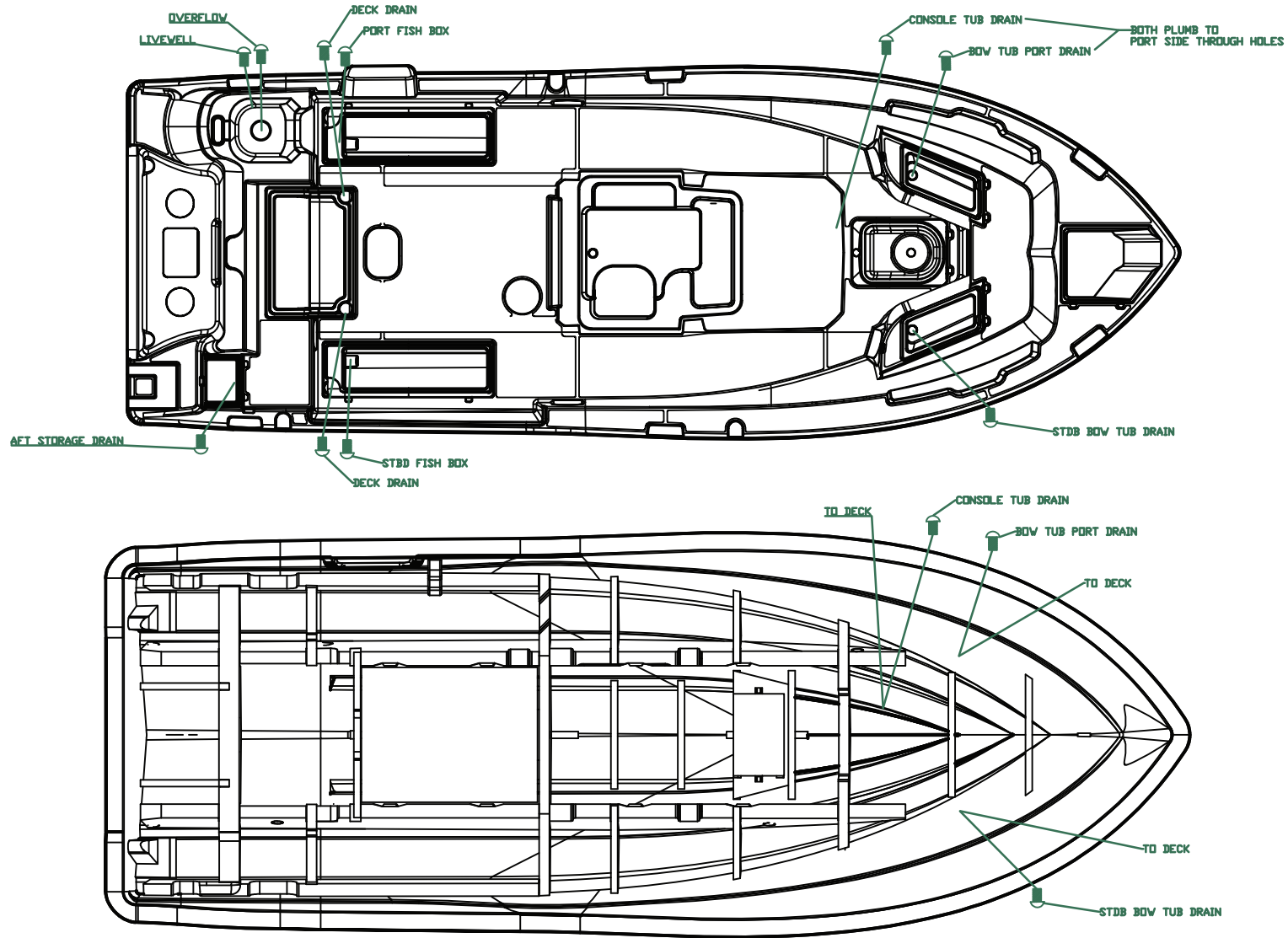
SFOX-0024

PLUMBING SCHEMATICS

COMMANDER BILGE PUMPS

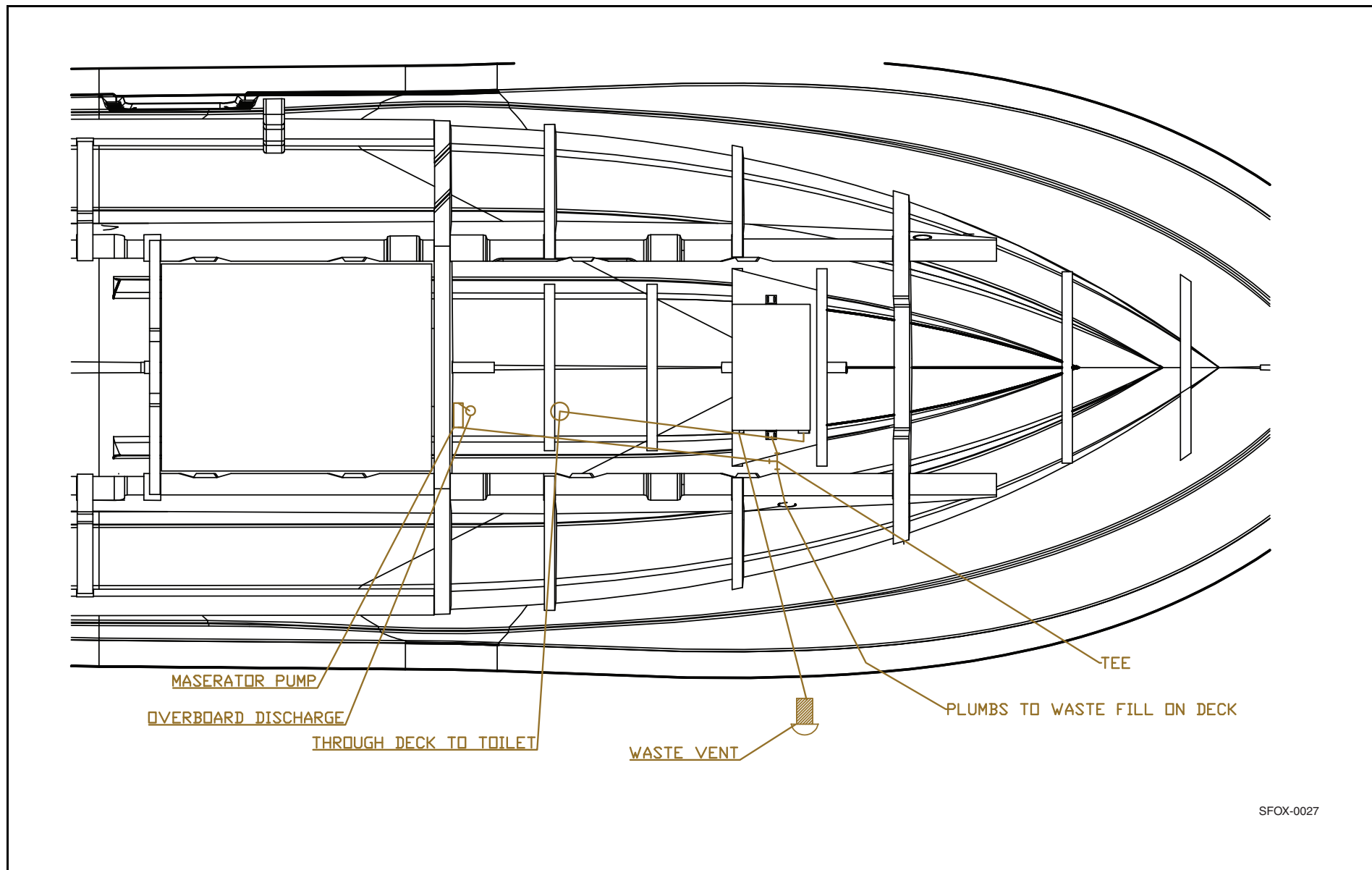


COMMANDER DRAINS



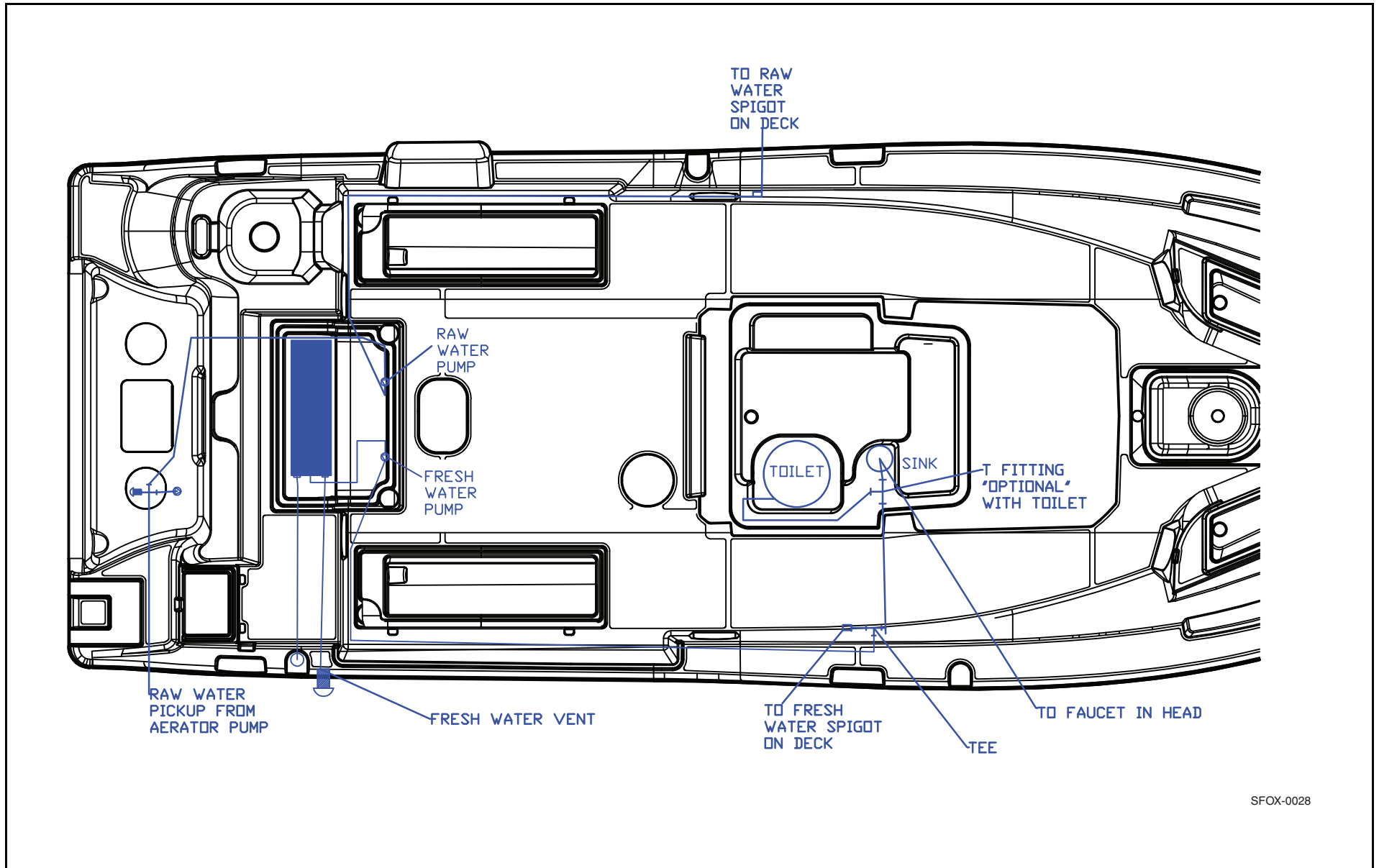
SFOX-0026

COMMANDER WASTE SYSTEM



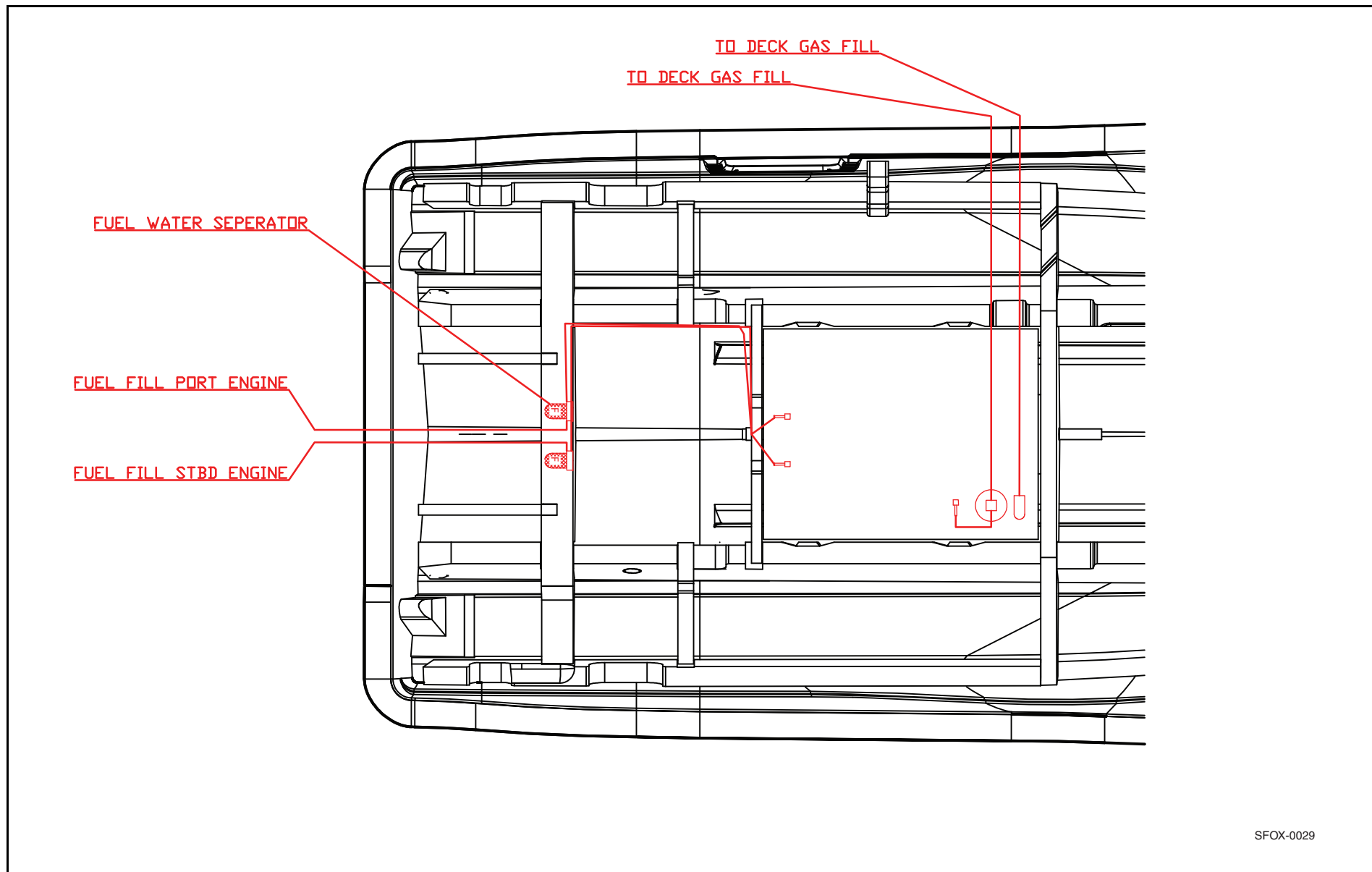
SFOX-0027

COMMANDER FRESH WATER SYSTEM



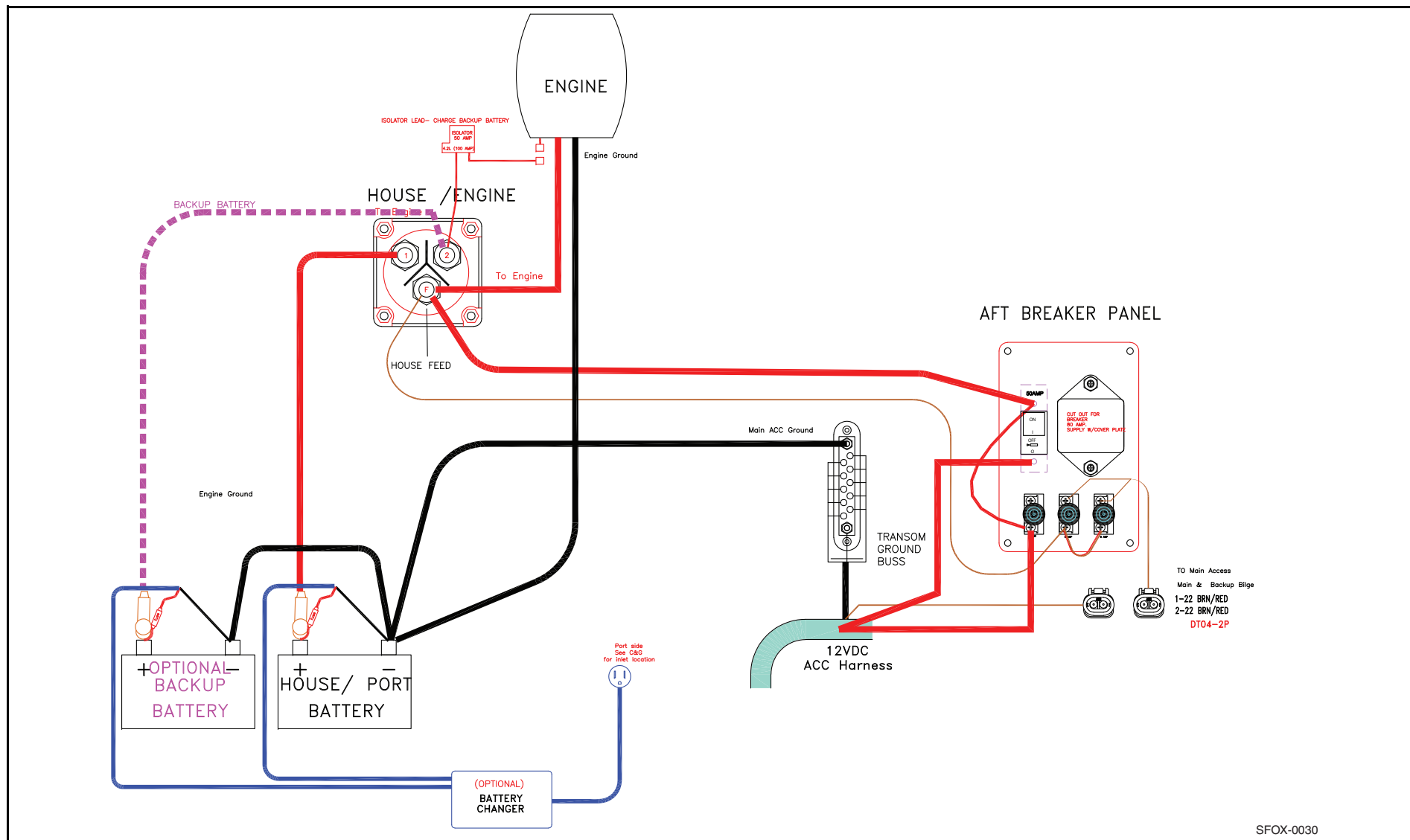
SFOX-0028

COMMANDER FUEL SYSTEM

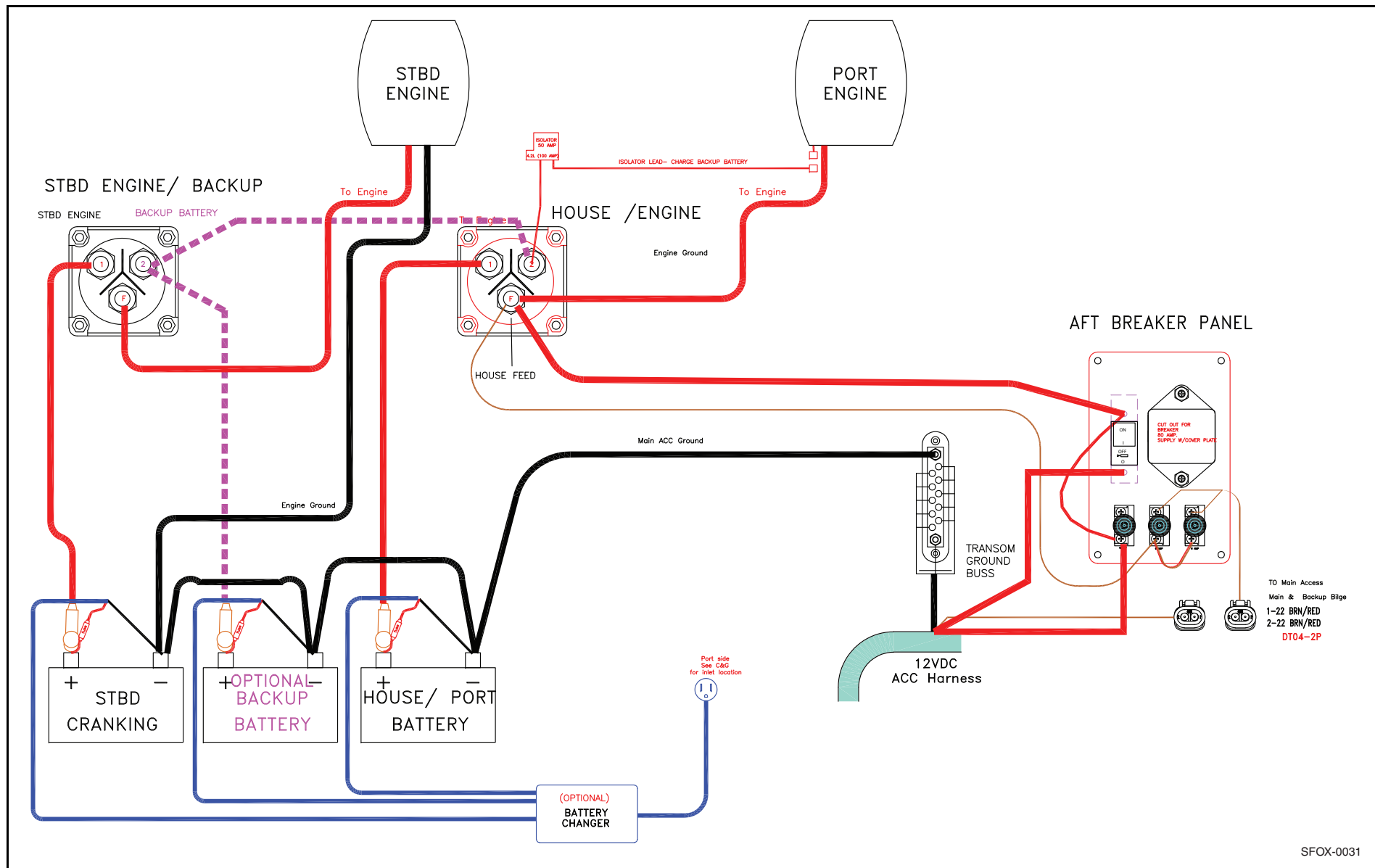


ELECTRICAL SCHEMATICS

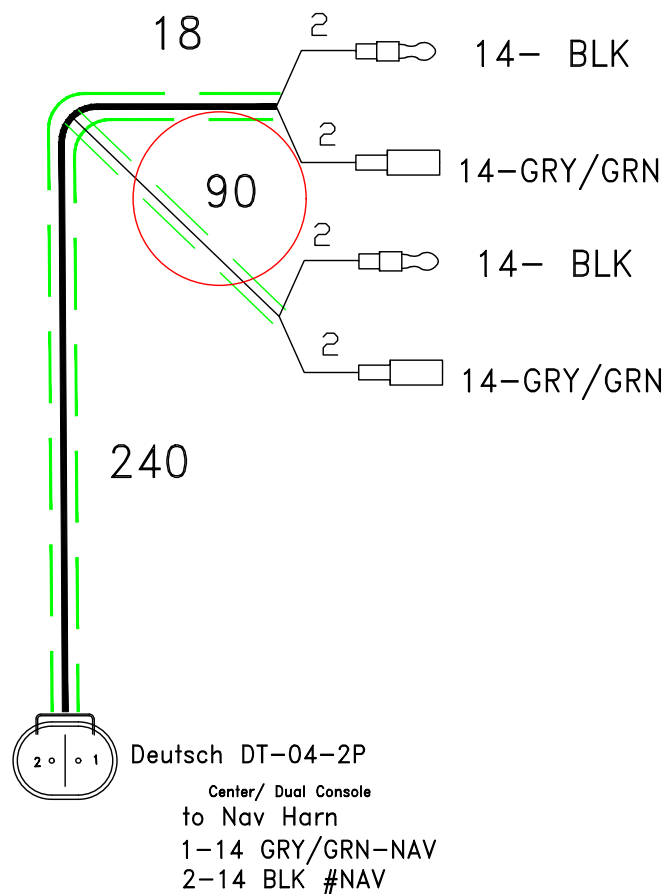
SINGLE ENGINE WITH TWO-BATTERY SETUP



TWIN ENGINE WITH THREE-BATTERY SETUP



HARNESS NAV LT LG W/DEUTSCH (P/N 6121)

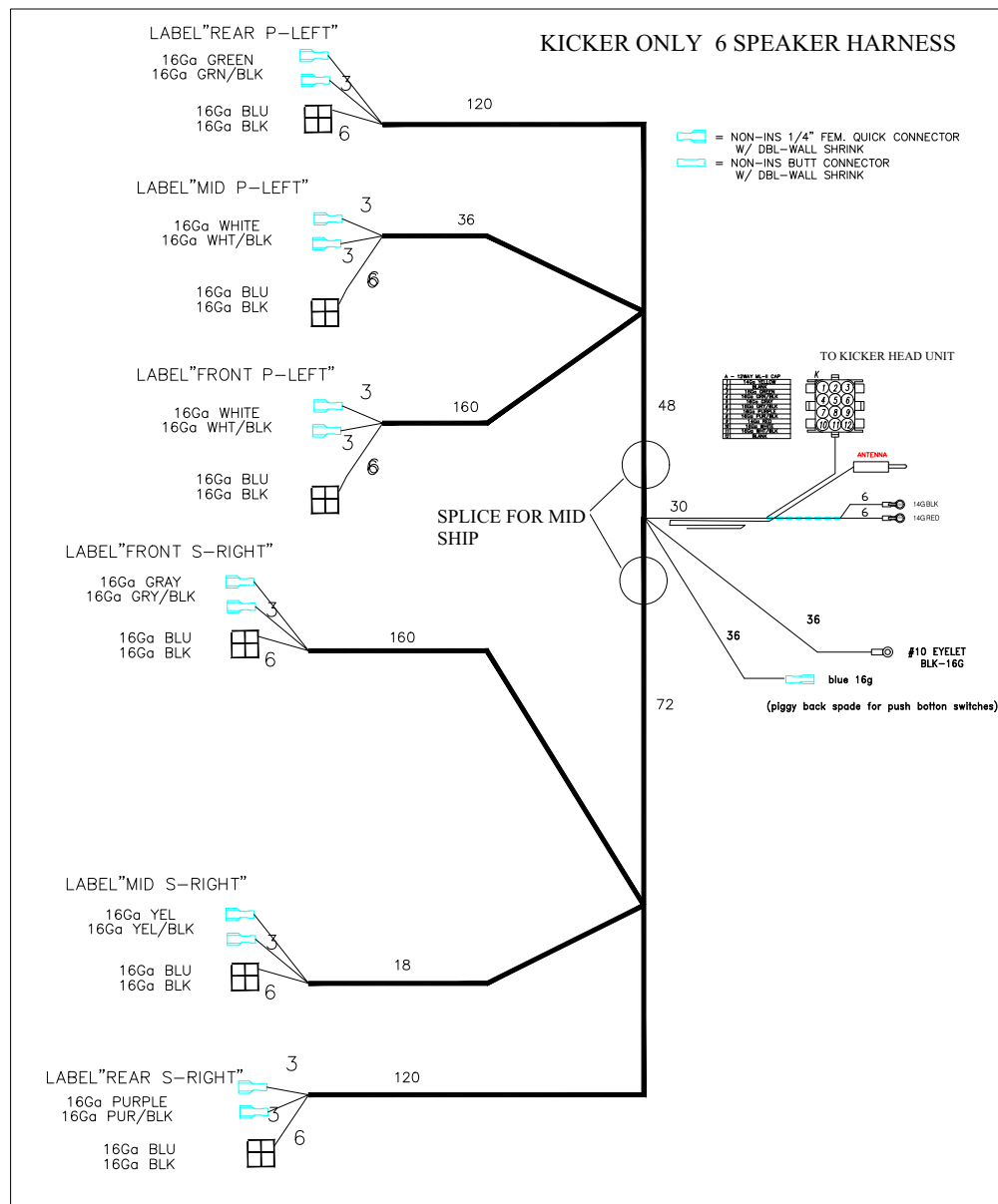


Harness, NAV-LONGE- sf# 6121-UPM# sfx-1035-00

est-7-18-16

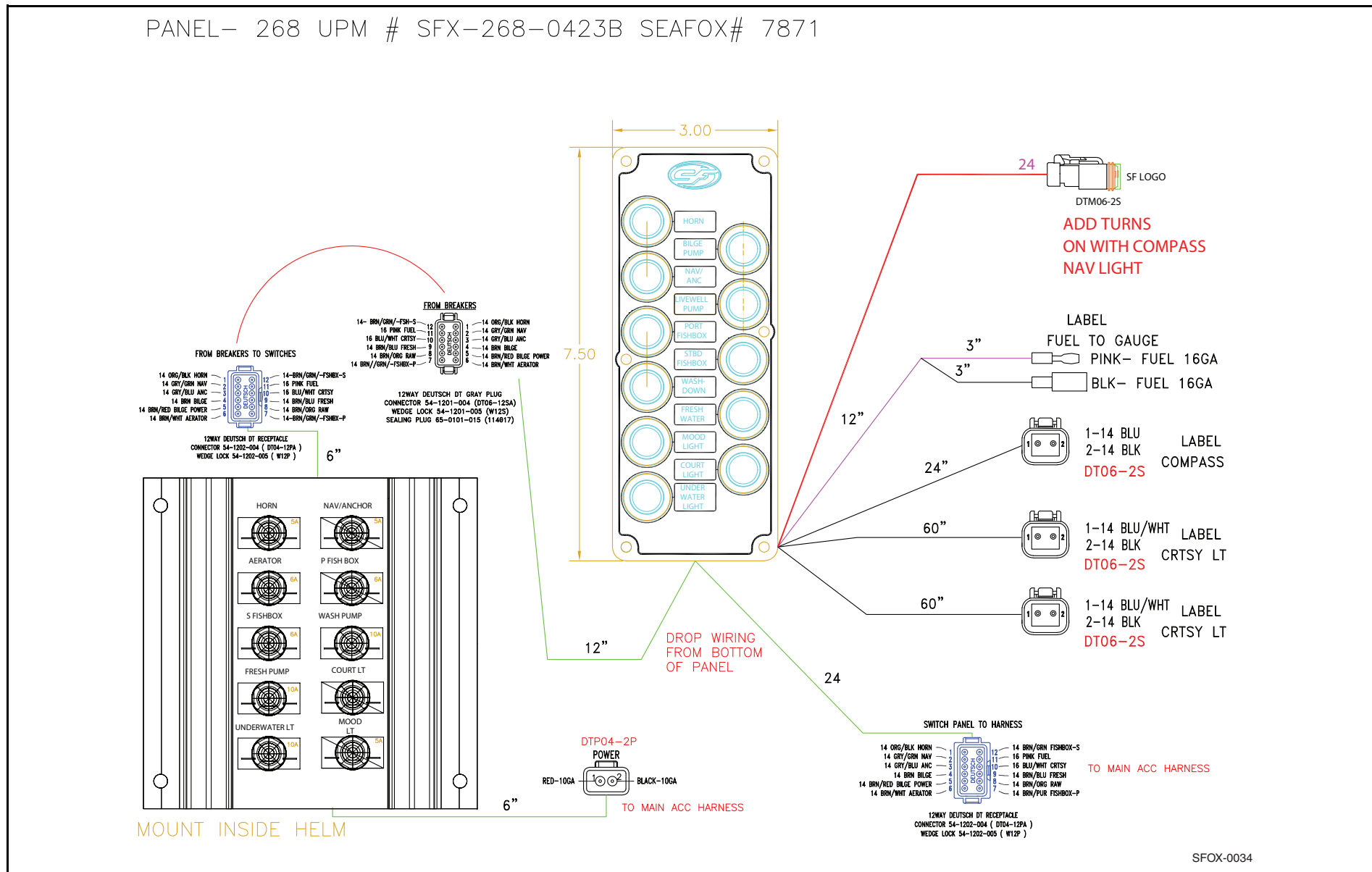


HARNESS KICKER ONLY 6-SPEAKER



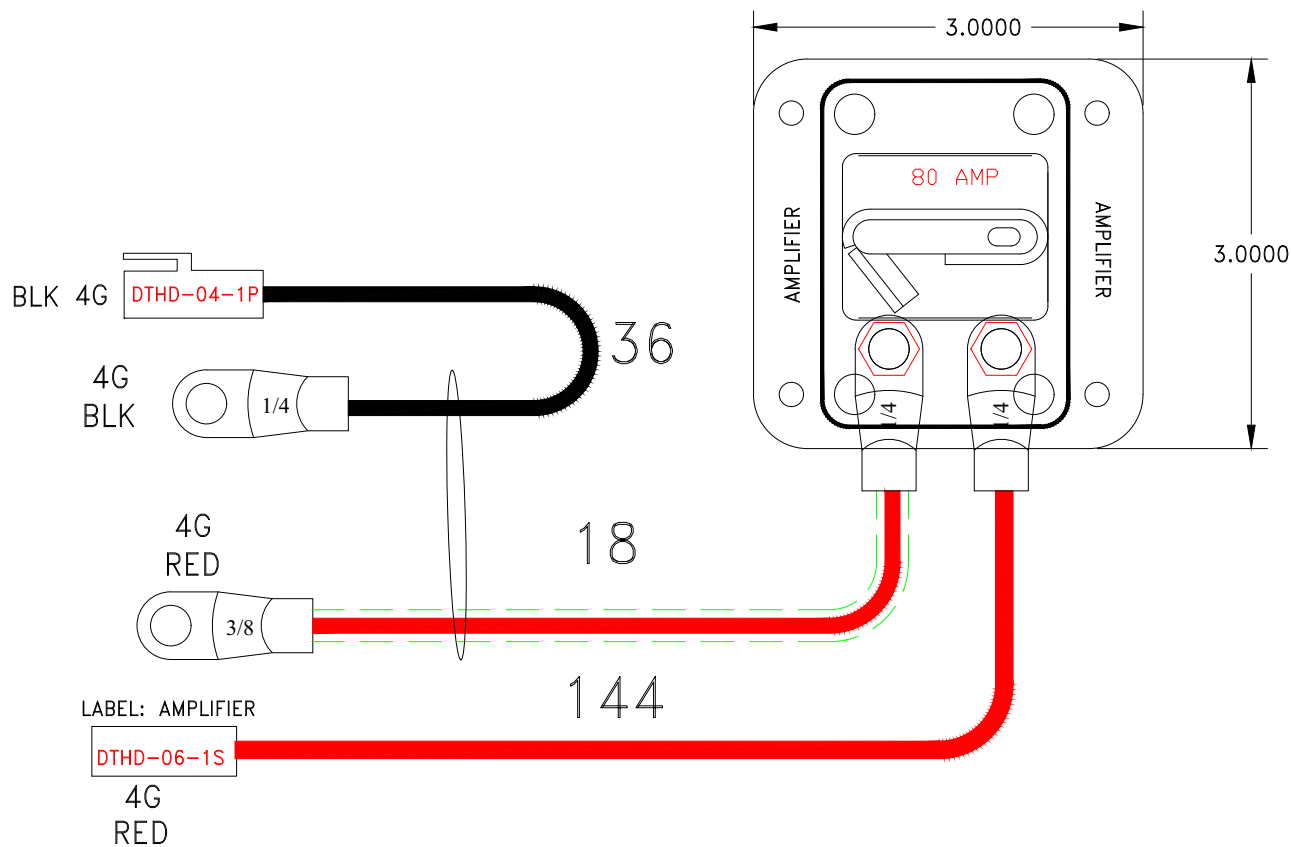


MAIN SWITCH PANEL



JL AUDIO BREAKER PANEL

JL AUDIO BREAKER KIT LONG 800/8



JL AMPLIFIER PIG TAIL KIT

JL AMPLIFIER PIG TAILS

TO M800/8 AMP
ZONE 1 & 3

DECK PLUG (SUB)

1)	12GA ORG	STBD SUB +
2)	12GA ORG/BLK	STBD SUB -

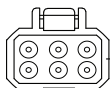
DTS06-2S



6

DECK PLUG (P) DT06-6S

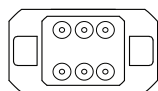
1)	16GA WHITE	PT BOW SPK+
2)	16GA WHT/BLK	PT BOW SPK-
3)	16GA LT BLU	PT MID SPK+
4)	16GA LTBLU/BLK	PT MID SPK-
5)	16GA GREEN	PT AFT SPK+
6)	16GA GRN/BLK	PT AFT SPK-



6

DECK PLUG (SS) DT04-6P

1)	16GA GRAY	STBD BOW SPK+
2)	16GA GRY/BLK	STBD BOW SPK-
3)	16GA YELLOW	STBD MID SPK+
4)	16GA YEL/BLK	STBD MID SPK-
5)	16GA PURPLE	STBD AFT SPK+
6)	16GA PUR/BLK	STBD AFT SPK-



6

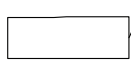
6

DTHD-04-1P RED 4G



6

DTHD-06-1S BLK 4G



6

BLU/WHT- 16GA



18

TO M800/8 AMP

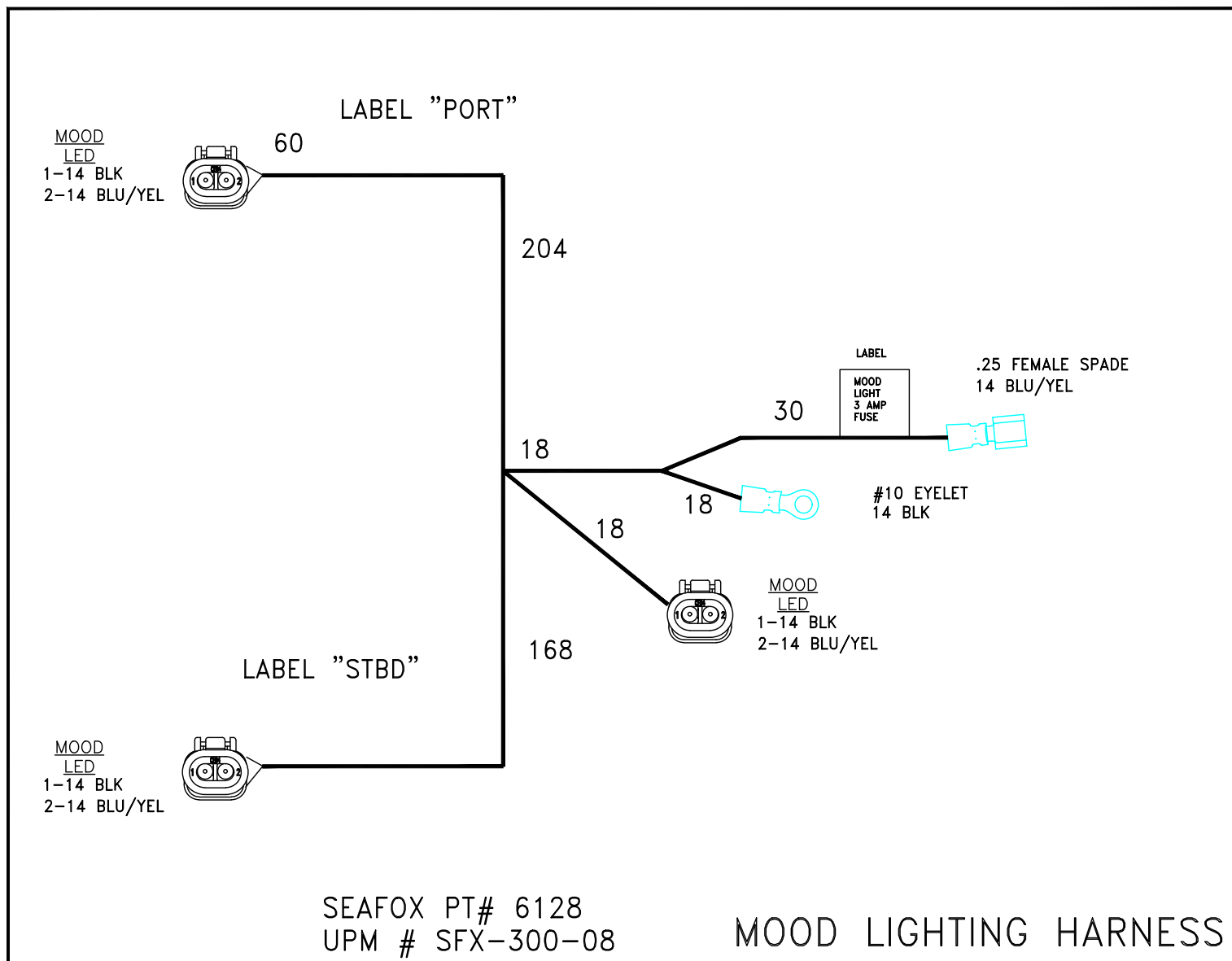
STRIP WIRES (NO TINED WIRE FOR SPEAKERS)

1)	16GA WHITE	PT BOW SPK+
2)	16GA WHT/BLK	PT BOW SPK-
3)	16GA PINK	PT MID SPK+
4)	16GA PINK/BLK	PT MID SPK-
5)	16GA GREEN	PT AFT SPK+
6)	16GA GRN/BLK	PT AFT SPK-
7)	16GA GRAY	STBD BOW SPK+
8)	16GA GRY/BLK	STBD BOW SPK-
9)	16GA YELLOW	STBD MID SPK+
10)	16GA YEL/BLK	STBD MID SPK-
11)	16GA PURPLE	STBD AFT SPK+
12)	16GA PUR/BLK	STBD AFT SPK-
13)	12GA ORG	MID SUB WOOFER +
14)	12GA ORG/BLK	MID SUB WOOFER -
15)	16GA BLUE	TRIGGER ON +
16)	4GA BLK	GROUND-
17)	4GA RED	POWER +

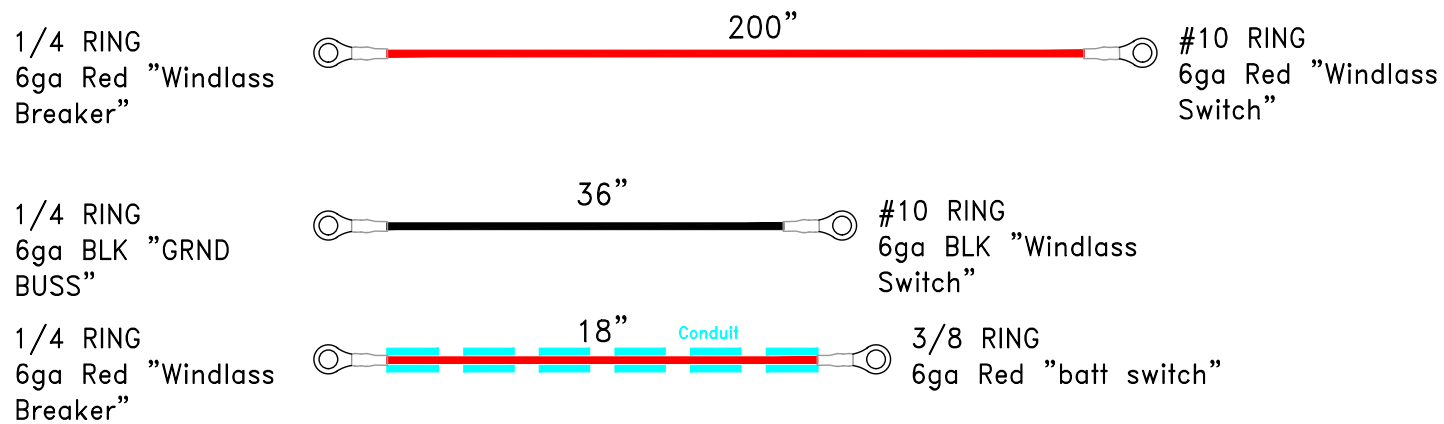
SFX-331-328
AMPLIFIER, PIG TAIL KIT 24-26ft

SFOX-0035

HARNESS MOOD LIGHT W/DEUTSCH (P/N 6128) – OPTIONAL



HARNESS WINDLASS HULL AFT BATTERY (P/N 6134) – OPTIONAL



SEAFOX PT# 6134

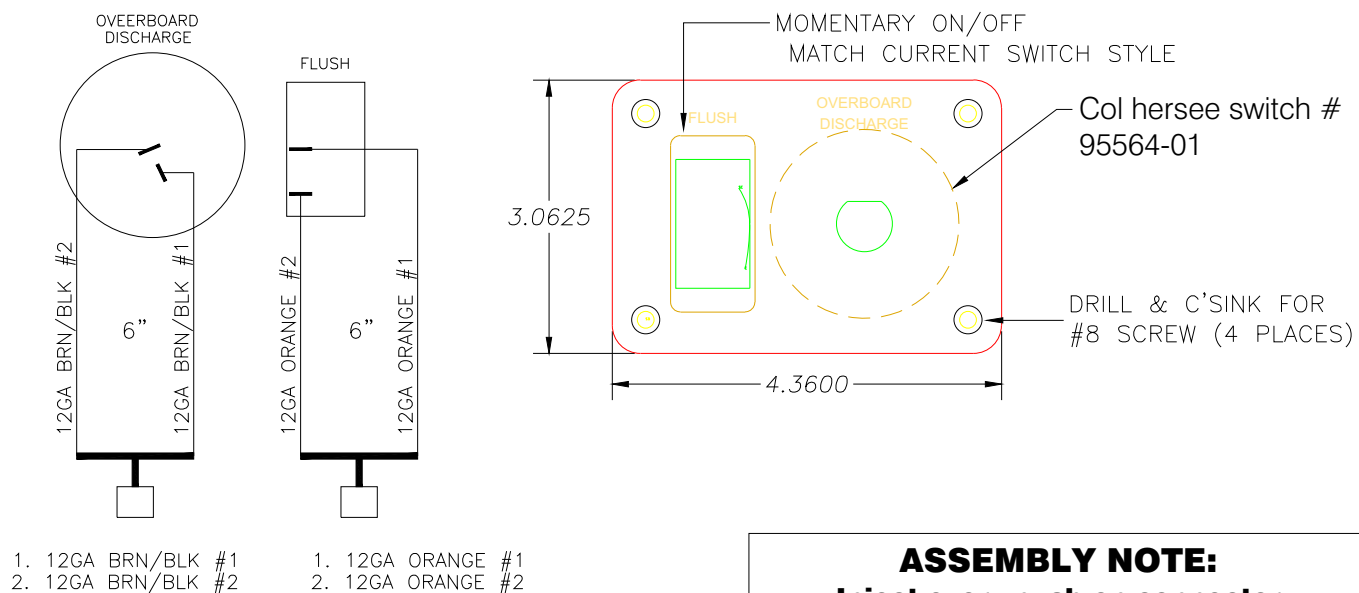
UPM PT#: SFX-300-07

Windlass Cable Set– HULL



Model 268CC

HEAD PANEL SWITCH ORB (P/N 6136) – OPTIONAL

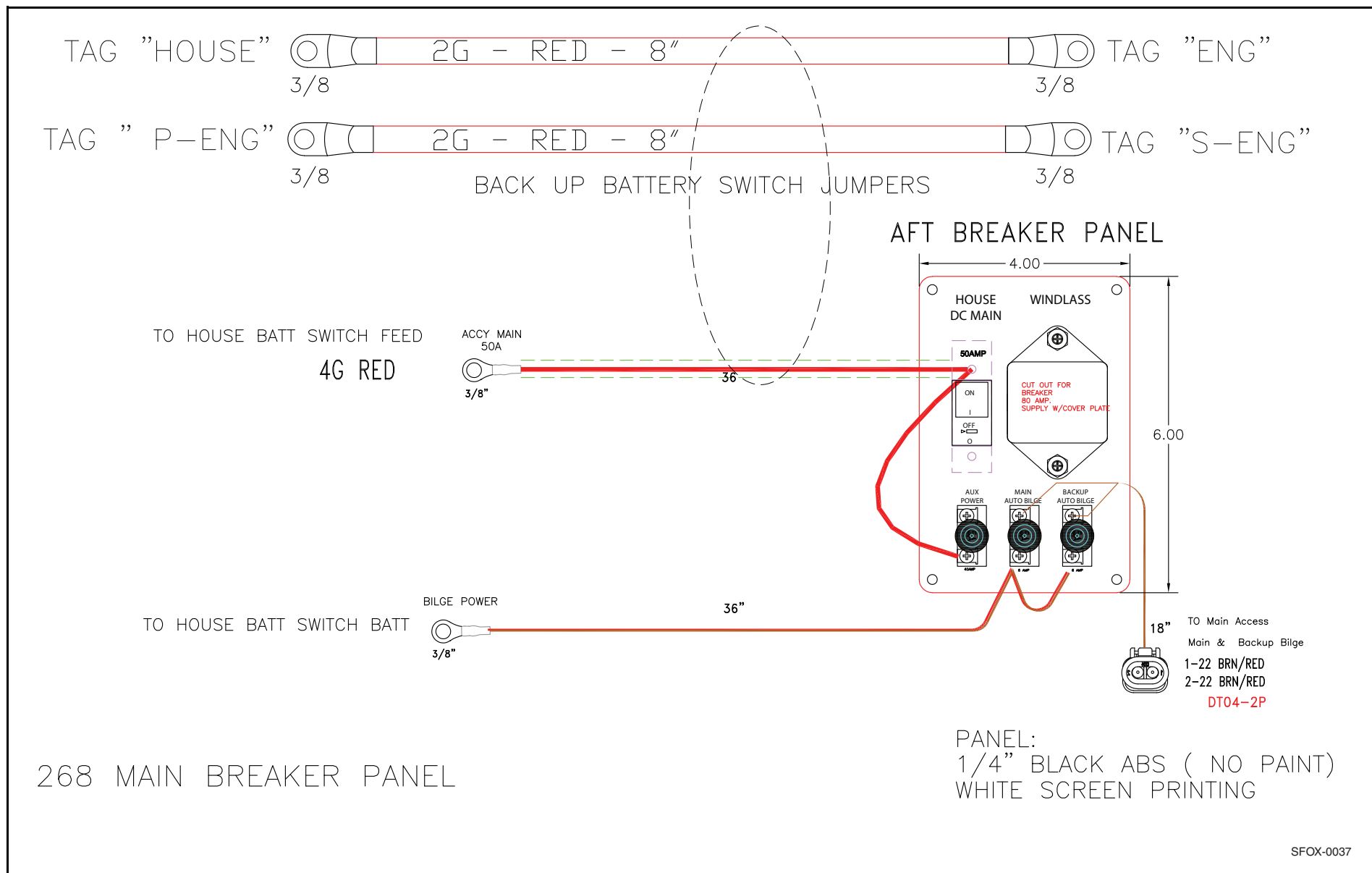


ASSEMBLY NOTE:
Inject every push-on connector with dielectric grease prior to attachment to switch.

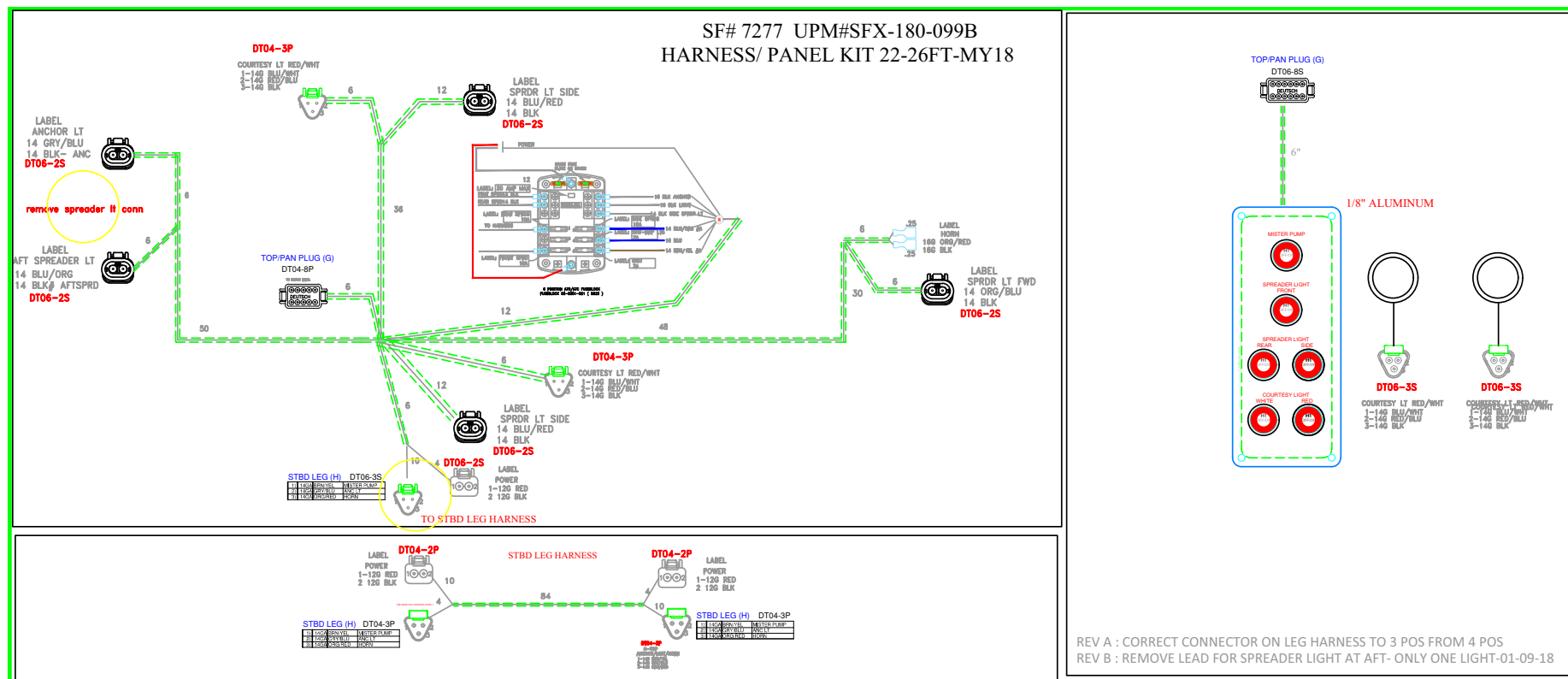
SEAFOX PT# 6136

Quantity	648-ALUMINUM - 6061-T6 ALUMINUM	
	Material	
Work Order Number	ELECTRIC FLUSH-DISCHARGE SWITCH PANEL - WHITE- BLACK LETTERS	
	File Number SFX300-14	
	SEAFOX BOAT COMPANY	
Due Date	07-28-15	
	Faceplate Number	Panel Number

AFT MAIN BREAKER PANEL



ULTIMA TOP SWITCH/HARNESS (P/N 7277) – OPTIONAL





Sea Fox Boat Company, Inc.
2550 Highway 52
Moncks Corner, SC 29461-5024

Telephone: 843-761-6090
www.seafoxboats.com

Ken Cook Co.
Printed in U.S.A.
Rev 1120