



# Owner's Manual Supplement

[www.SeaFoxBoats.com](http://www.SeaFoxBoats.com)

## **SEA FOX BOAT'S DISCLAIMER**

The following Owner's Manual is provided for information and educational purposes only and is not intended to offer or provide legal advice or create a contractual relationship between Sea Fox Boat Company and the owner of any Sea Fox brand vessel. Please beware that as a vessel owner you have non-delegable responsibilities regarding the safety, maintenance, fitness, and operation of your vessel and the extent of such responsibilities is ultimately determined by Federal law and regulations, the general maritime law of the United States, the laws and regulations of the states and territories of the United States, or the laws and regulations of the country where you operate your vessel. To fully understand your responsibilities as a vessel owner, and before operating or letting any third-party operate your vessel, we recommend that you consult the services of a qualified lawyer in admiralty and maritime law.

# TABLE OF CONTENTS

|  |    |  |    |
|--|----|--|----|
| Introduction . . . . .                         | 3  | Harness Liner w/ Kicker/Infin (P/N 6400) . . . . .                                 | 15 |
| Specifications . . . . .                       | 3  | Harness ACC w/ Lenco Deutsch (P/N 6595) . . . . .                                  | 16 |
| Designated Occupant Seating . . . . .          | 4  | Trimtabs Electric Switch Standard (P/N 2895) – Optional . . . . .                  | 17 |
| Plumbing Schematics . . . . .                  | 5  | Harness Mood LT w/ Deutsch (P/N 6128) – Optional. . . . .                          | 18 |
| Avenger Fresh Water System . . . . .           | 5  | Harness Stereo Infinity Con (P/N 6129) – Optional. . . . .                         | 19 |
| Avenger Fuel System. . . . .                   | 6  | Harness Underwater Lt w/ Deutsch (P/N 6133) – Optional . . . . .                   | 20 |
| Avenger Livewell System. . . . .               | 7  | Harness Windlass Hull Aft Battery (P/N 6134) – Optional . . . . .                  | 21 |
| Avenger Mister System . . . . .                | 8  | Harness Windlass Deck Option (P/N 6135) – Optional. . . . .                        | 22 |
| Avenger Raw Water System . . . . .             | 9  | Electric Flush-Discharge Switch Panel (P/N 6136) –<br>Optional . . . . .           | 23 |
| Avenger Waste System . . . . .                 | 10 | U Panel Switch Ultima (P/N 6463) – Optional. . . . .                               | 24 |
| Avenger Bilge System . . . . .                 | 11 | Center Console Ultima Top – 2016 (P/N 6463, 6464 and<br>6476) – Optional . . . . . | 25 |
| Avenger Drains . . . . .                       | 12 | Electric Flush Switch Panel (P/N 6870) – Optional. . . . .                         | 26 |
| Electrical Schematics . . . . .                | 13 | Head Harness ORB 249AV (P/N 6871) – Optional . . . . .                             | 27 |
| Typical 2-Battery Setup with Transom . . . . . | 13 |  |    |
| Panel Switch Deutsch (P/N 6114) . . . . .      | 14 |  |    |



This Page Intentionally Left Blank

## INTRODUCTION

**Congratulations and Welcome Aboard!** With so many boat brands to choose from, we want to congratulate you on your decision to choose Sea Fox Boats. For more than 24 years, Sea Fox offers the finest hand-crafted saltwater boats carefully balanced with the build-quality, features, styling and performance for the fairest price. Our passion for boating is evident in every model we make and we appreciate that you've noticed the Sea Fox difference.

We share your love for the moments spent on the water with friends and family, which is why every Sea Fox boat offers a unique blend of fishing/family options, technologies and innovative features. Your choice of a Sea Fox affirms that you have performed your research and compared the value of your model with the competition.

Whether you are new to the boating lifestyle or an old salt, we ask that **you and all other operators** read the owner's manual, this supplement, and all other literature provided with the boat **before** operating the boat or any equipment. We also recommend that all operators enroll in a boating safety course available online - see References and Contact Information in this section for education resources online.

This supplement contains model-specific information not included with the owner's manual. This manual is not intended to be a replacement for specific product literature provided by engine, accessory or other major equipment manufacturers, but rather to supplement that information.

Because of our philosophy of continuous product improvement, this manual serves as a general guide only, so the specifications and illustrations used may not match the equipment on your boat and are intended only as general reference views.

*We welcome you to the Sea Fox family and wish you many years of boating enjoyment!*

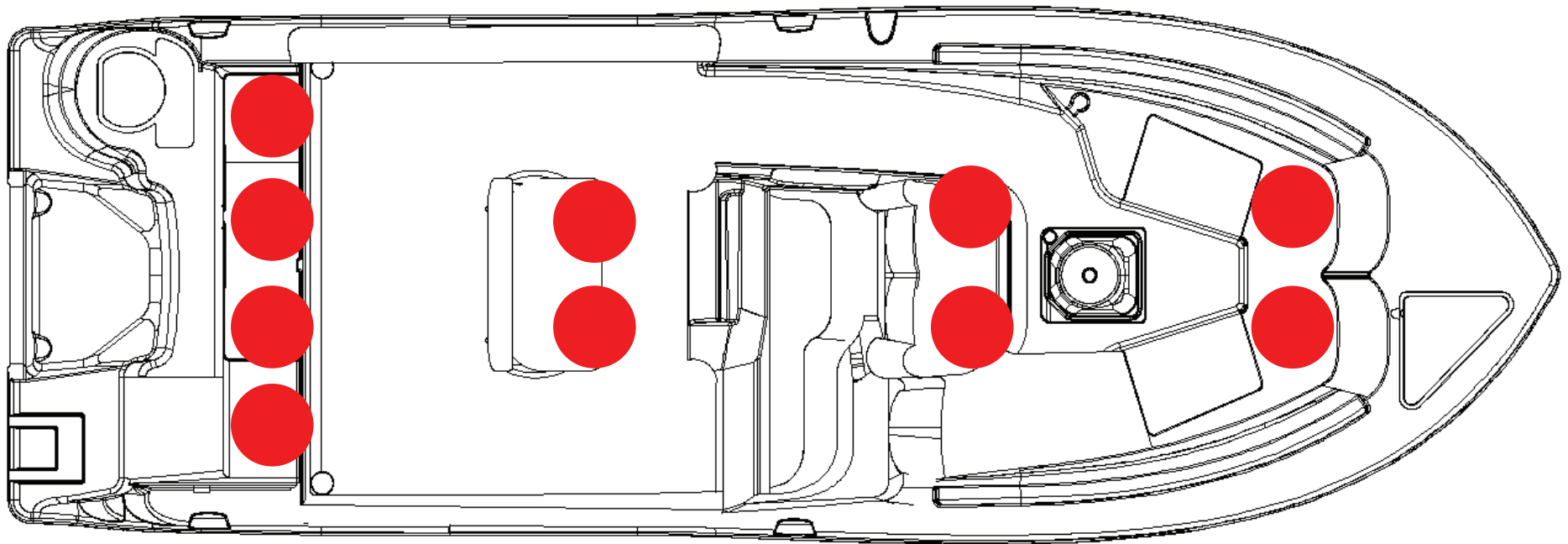
## SPECIFICATIONS

|  |                    |
|--|--------------------|
| Max. Weight Capacity                     | 2500 lbs (1134 kg) |
| Persons                                  | 10                 |
| Persons Weight                           | 1500 lbs (680 kg)  |
| Max. HP                                  | 300 hp (224 kw)    |
| L.O.A.                                   | 24' 4" (7.41 m)    |
| Beam                                     | 8' 6" (2.59 m)     |
| Draft                                    | 14 in. (0.36 m)    |
| Height, Keel to Top (Light Folded)       | 115 in. (2.92 m)   |
| Bridge Clearance Hard Top                | 99 in. (2.51 m)    |
| Max. Weight Boat (w/ Fluids, Largest HP) | 5146 lbs (2334 kg) |
| Fuel Tank Capacity                       | 117 gal (443 L)    |
| Freshwater Tank Capacity                 | 12 gal (45 L)      |
| Holding Tank Capacity                    | 12 gal (45 L)      |



## DESIGNATED OCCUPANT SEATING

Be sure all passengers are properly seated in designated seating positions and not riding on the bow, bow pulpit, deck, gunwale or rear sun deck while underway. Passengers must use hand-holds and use caution when riding in the bow. Move to the aft passenger seats during rough water operation or if visibility is restricted.

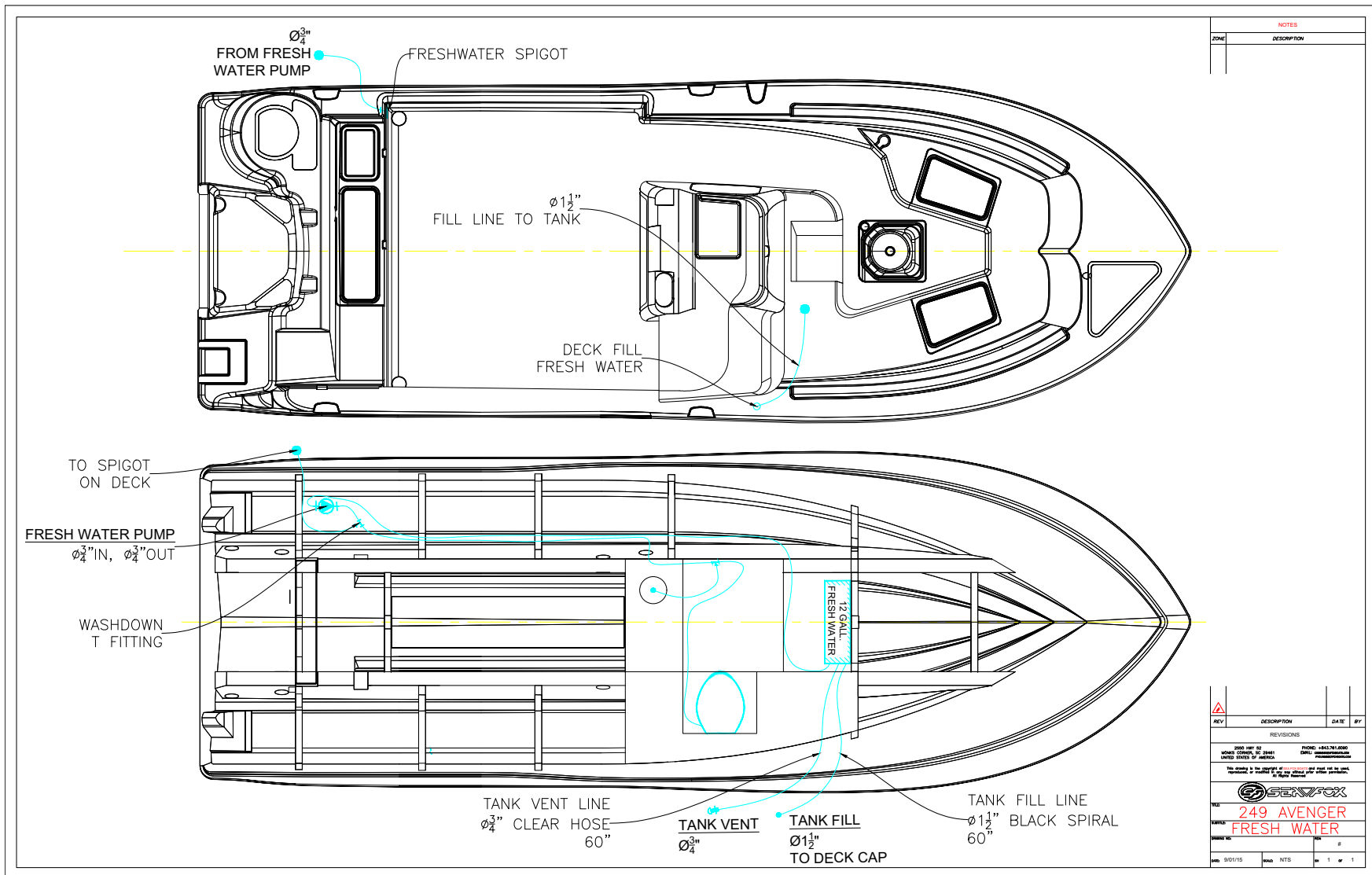


● = Seat position

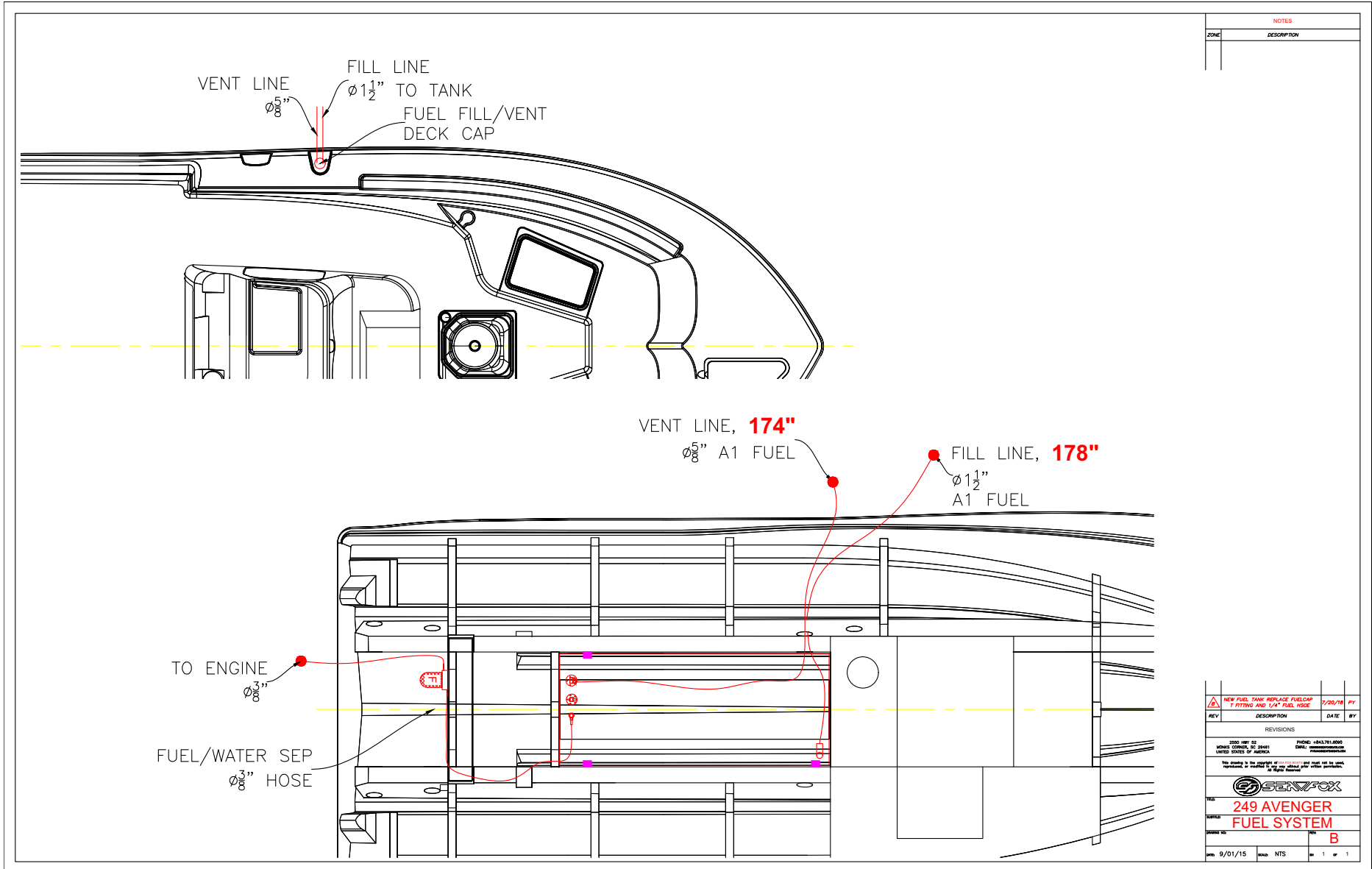
SFOX-0023

# PLUMBING SCHEMATICS

## AVENGER FRESH WATER SYSTEM

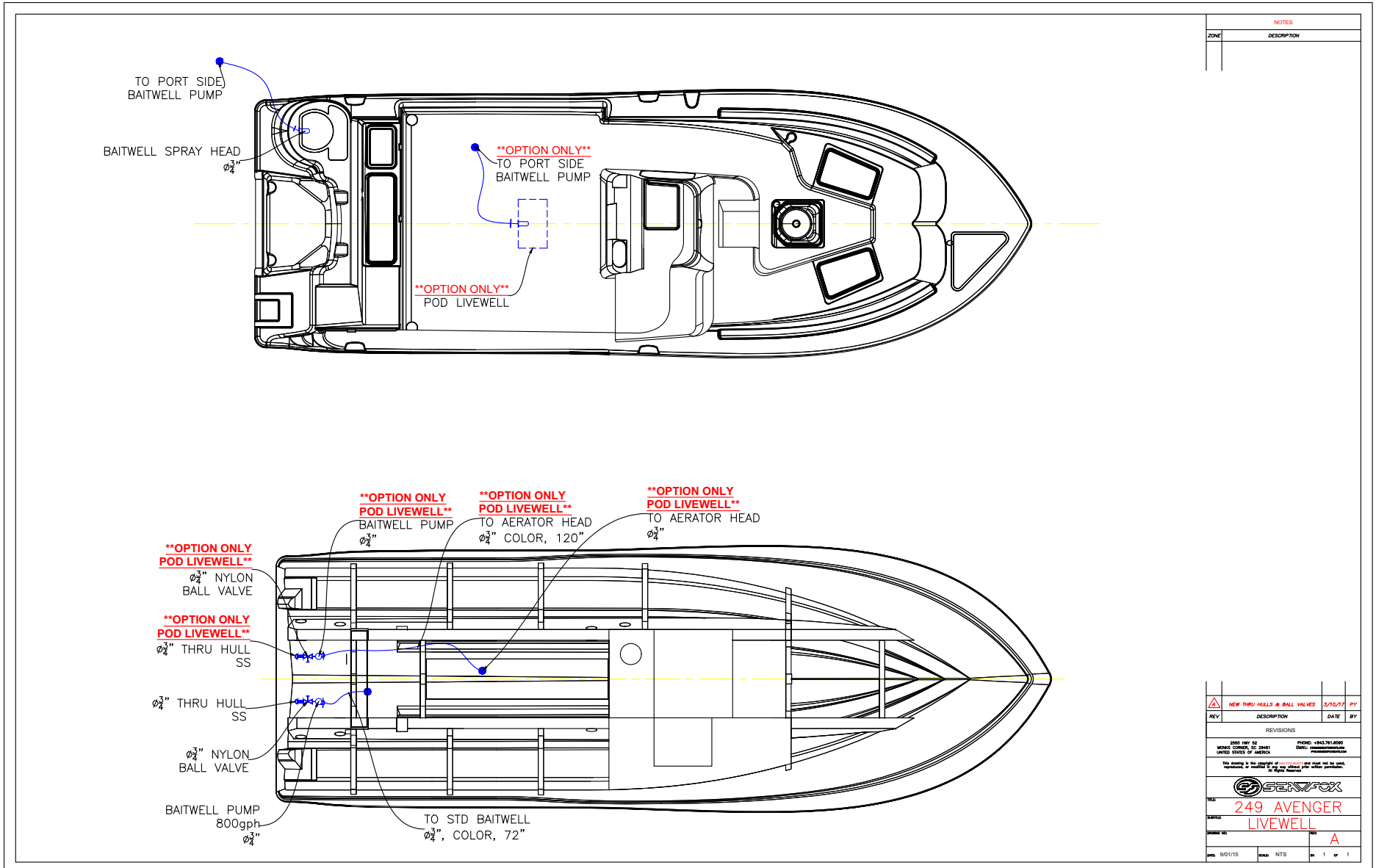


# AVENGER FUEL SYSTEM





# AVENGER LIVEWELL SYSTEM



| NOTES |             |
|-------|-------------|
| ZONE  | DESCRIPTION |
|       |             |

| REV | DESCRIPTION | DATE | BY |
|-----|-------------|------|----|
|     |             |      |    |

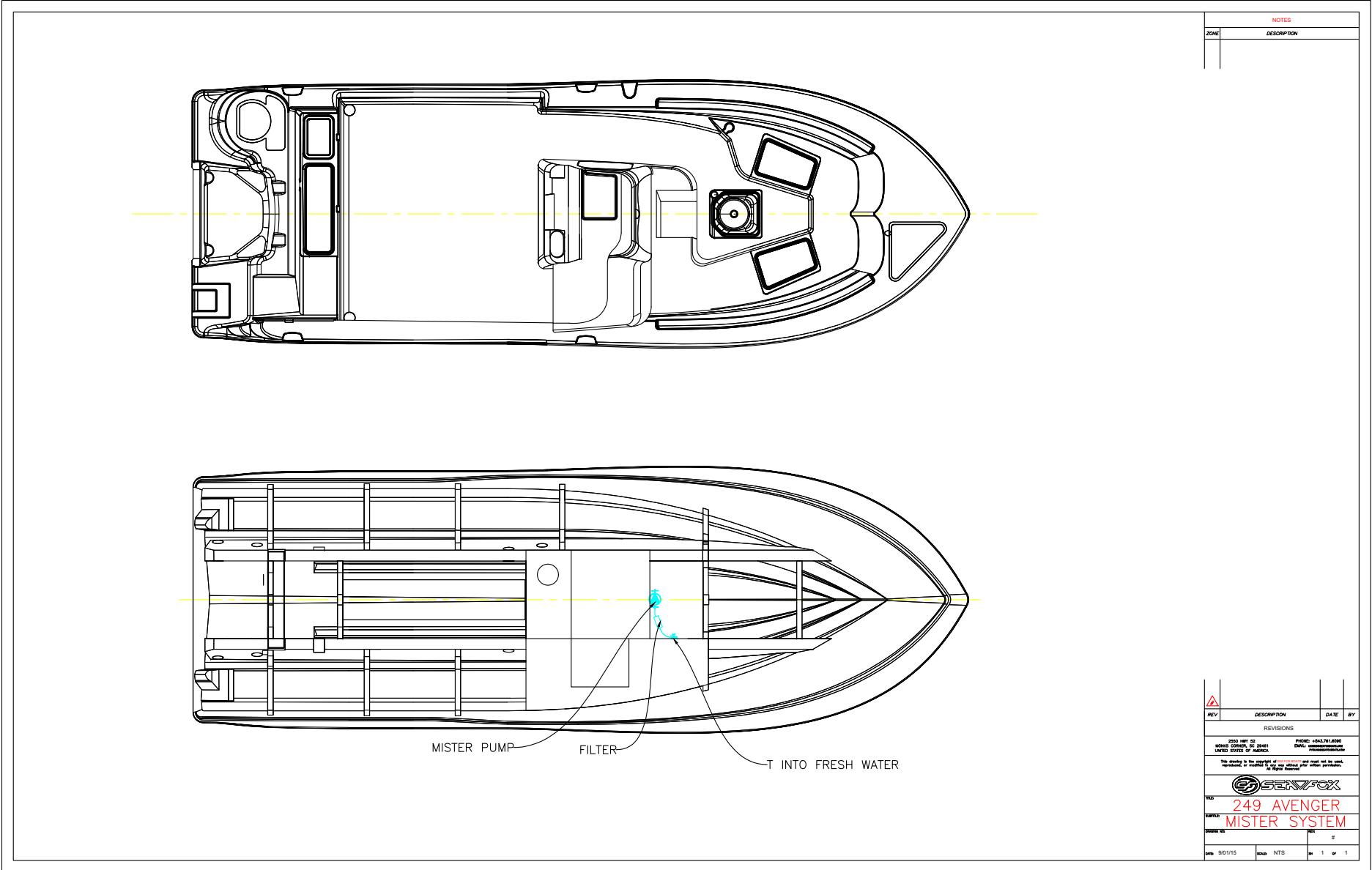
REVISIONS

2000 HWY 52 PHONE: +843.761.6800  
 MONROE CORP., SC 29041 EMAIL: [customerservice@seafox.com](mailto:customerservice@seafox.com)  
 UNITED STATES OF AMERICA

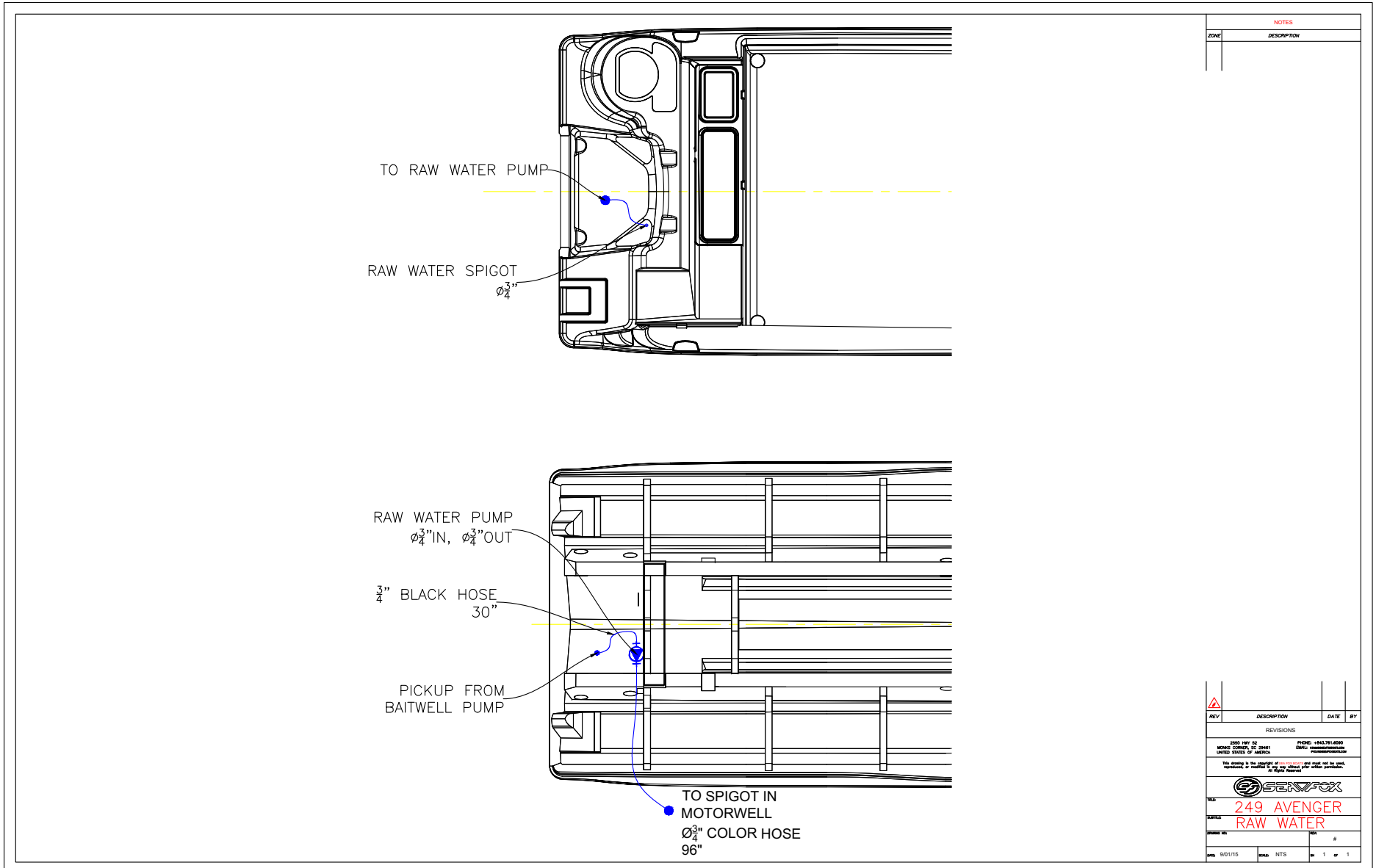
**249 AVENGER LIVEWELL**

DATE: 9/01/15  
 SCALE: NTS  
 SHEET: 1 OF 1

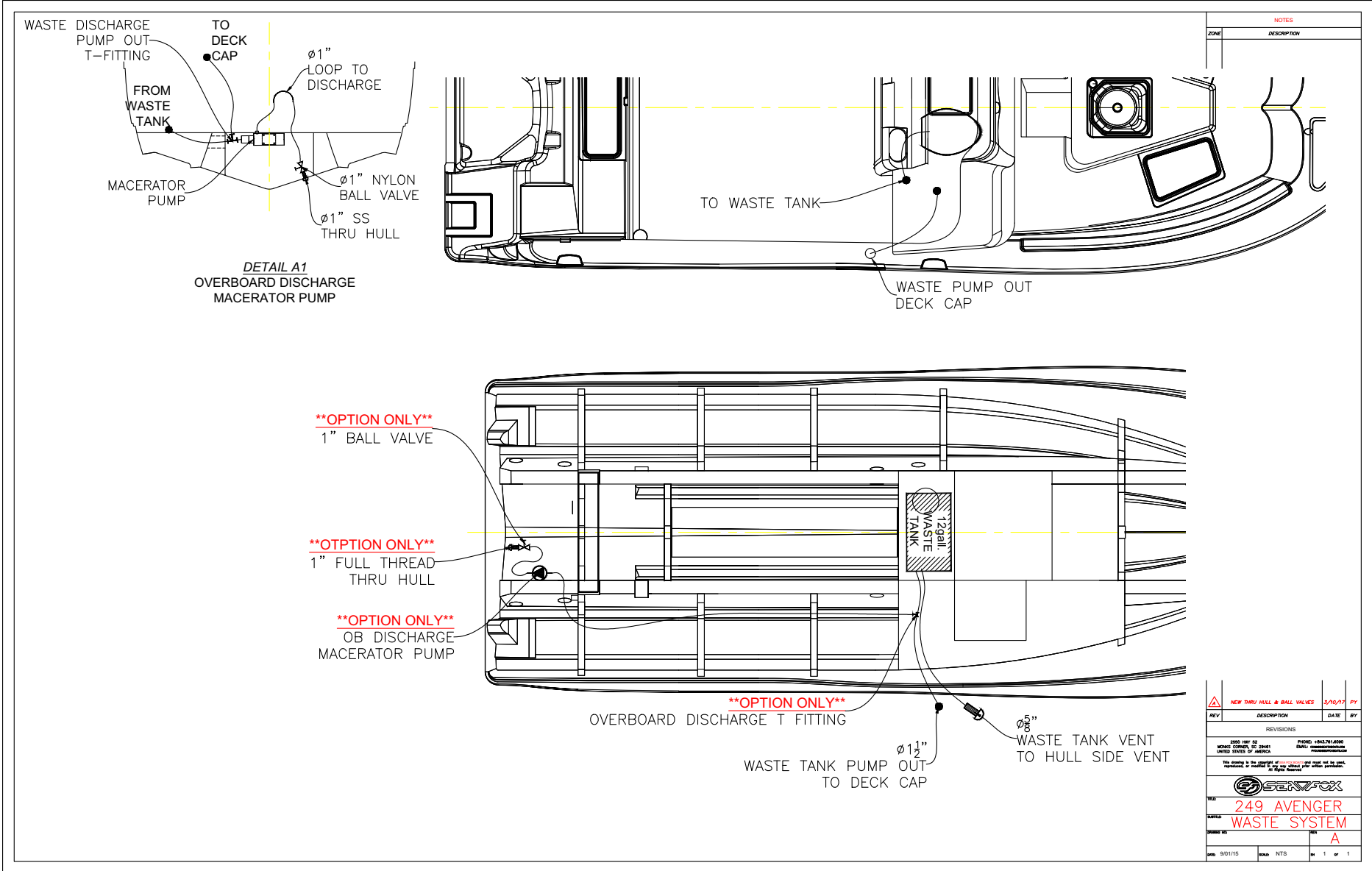
# AVENGER MISTER SYSTEM



# AVENGER RAW WATER SYSTEM



# AVENGER WASTE SYSTEM



| NOTES |             |
|-------|-------------|
| NO.   | DESCRIPTION |
|       |             |

| REV | DESCRIPTION | DATE | BY |
|-----|-------------|------|----|
|     |             |      |    |

REVISIONS

2000 HWY 52 PHONE: +843.761.6800  
 MONROE CORP., SC 29615 EMAIL: [monroecorp@monroecorp.com](mailto:monroecorp@monroecorp.com)  
 UNITED STATES OF AMERICA

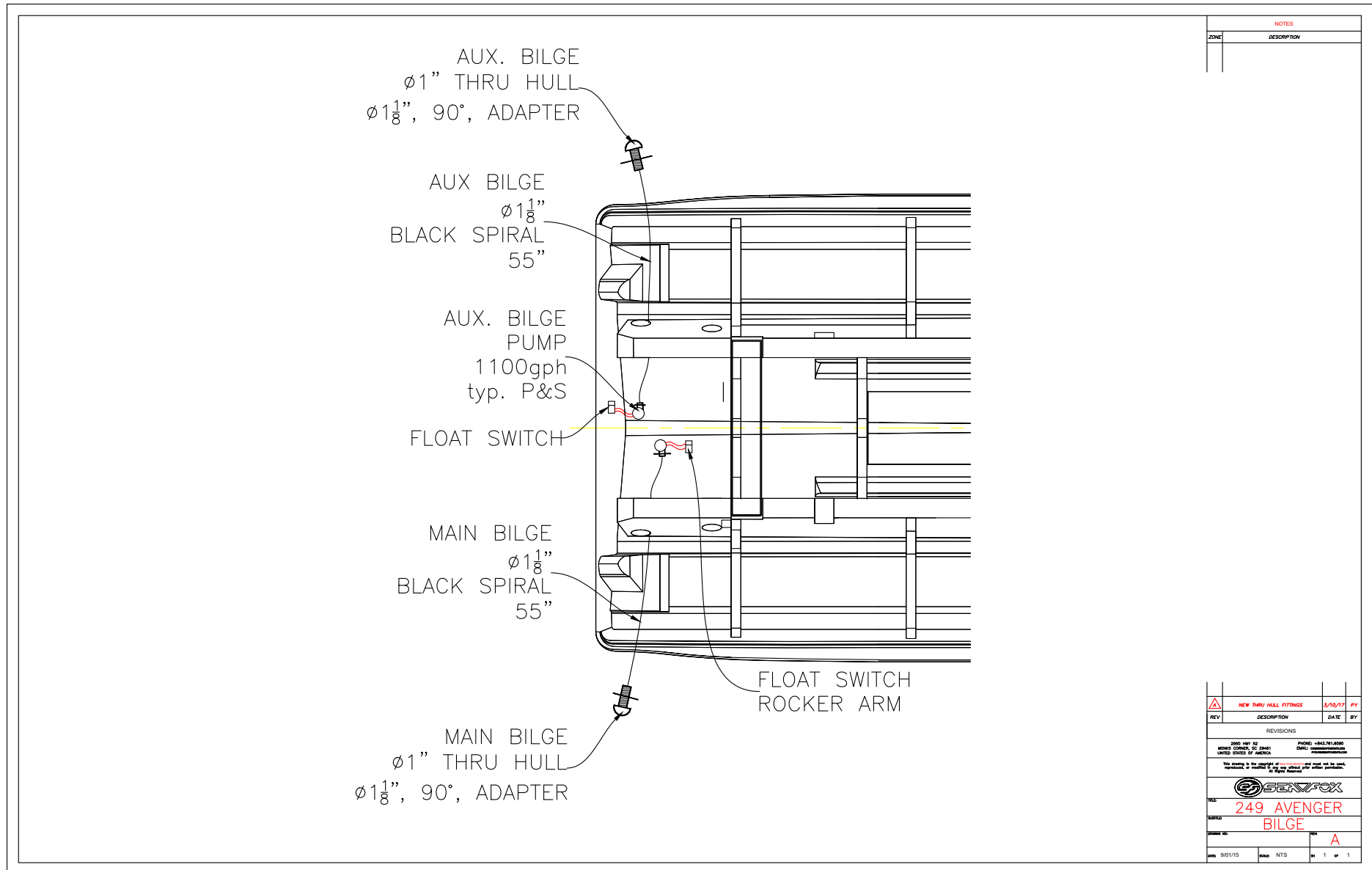
This drawing is the property of SeaFox and must not be used, reproduced or modified in any way without prior written permission.  
 © 2015 SeaFox

TITLE: **249 AVENGER WASTE SYSTEM**

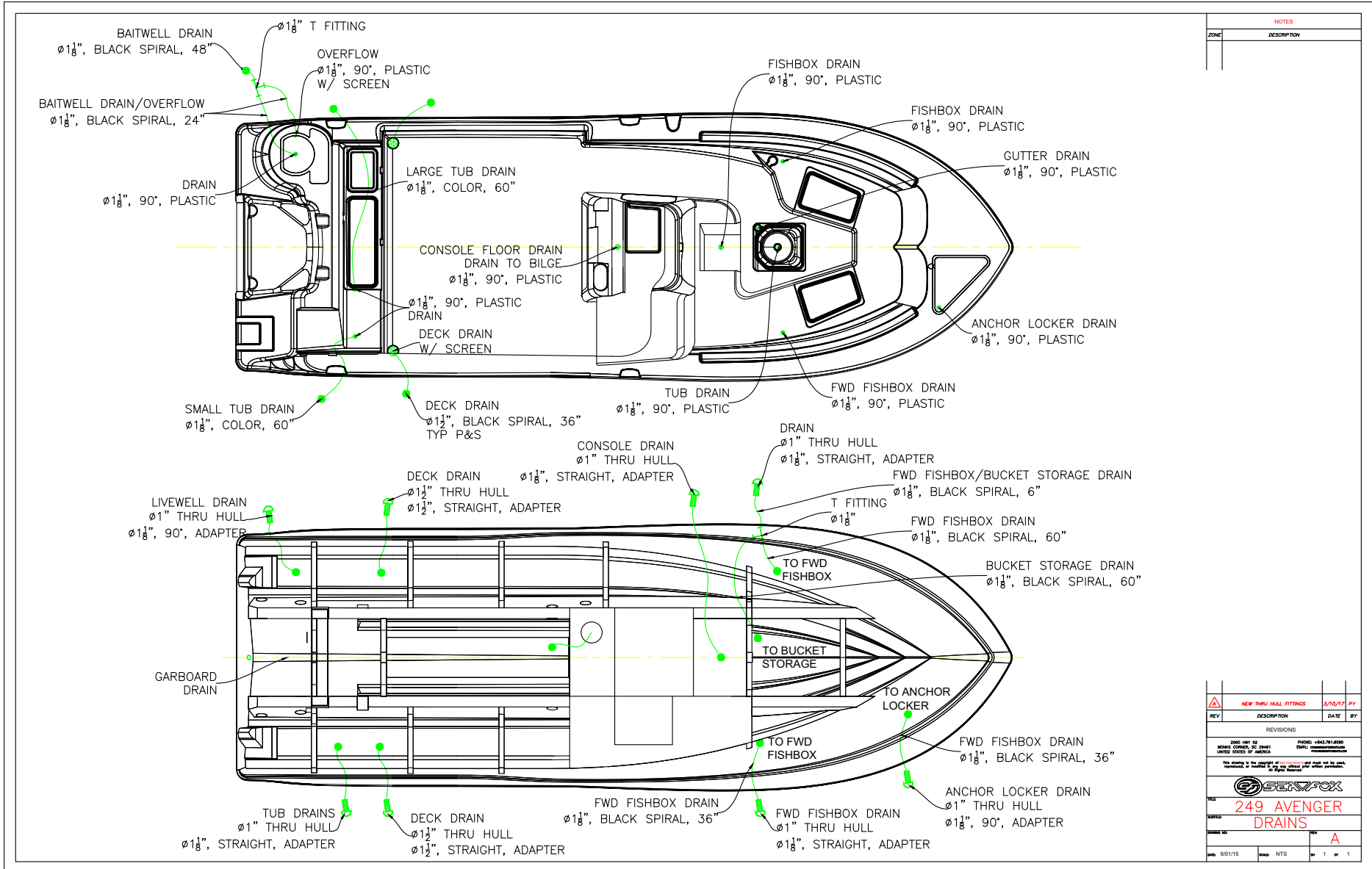
DRAWN BY: **A**

DATE: 9/01/15 SCALE: NTS SHEET: 1 OF 1

# AVENGER BILGE SYSTEM



# AVENGER DRAINS



| NOTES |             |
|-------|-------------|
| ZONE  | DESCRIPTION |
|       |             |

| REV | DESCRIPTION | DATE | BY |
|-----|-------------|------|----|
|     |             |      |    |

| REVISIONS                |   |
|--------------------------|---|
| 2000 HWY 52              | PHONE: +843.761.6800  |
| WORLD CORP., 52 DRIVE    | EMAIL: <a href="mailto:info@seafox.com">info@seafox.com</a> |
| UNITED STATES OF AMERICA | <a href="http://www.seafox.com">www.seafox.com</a>          |

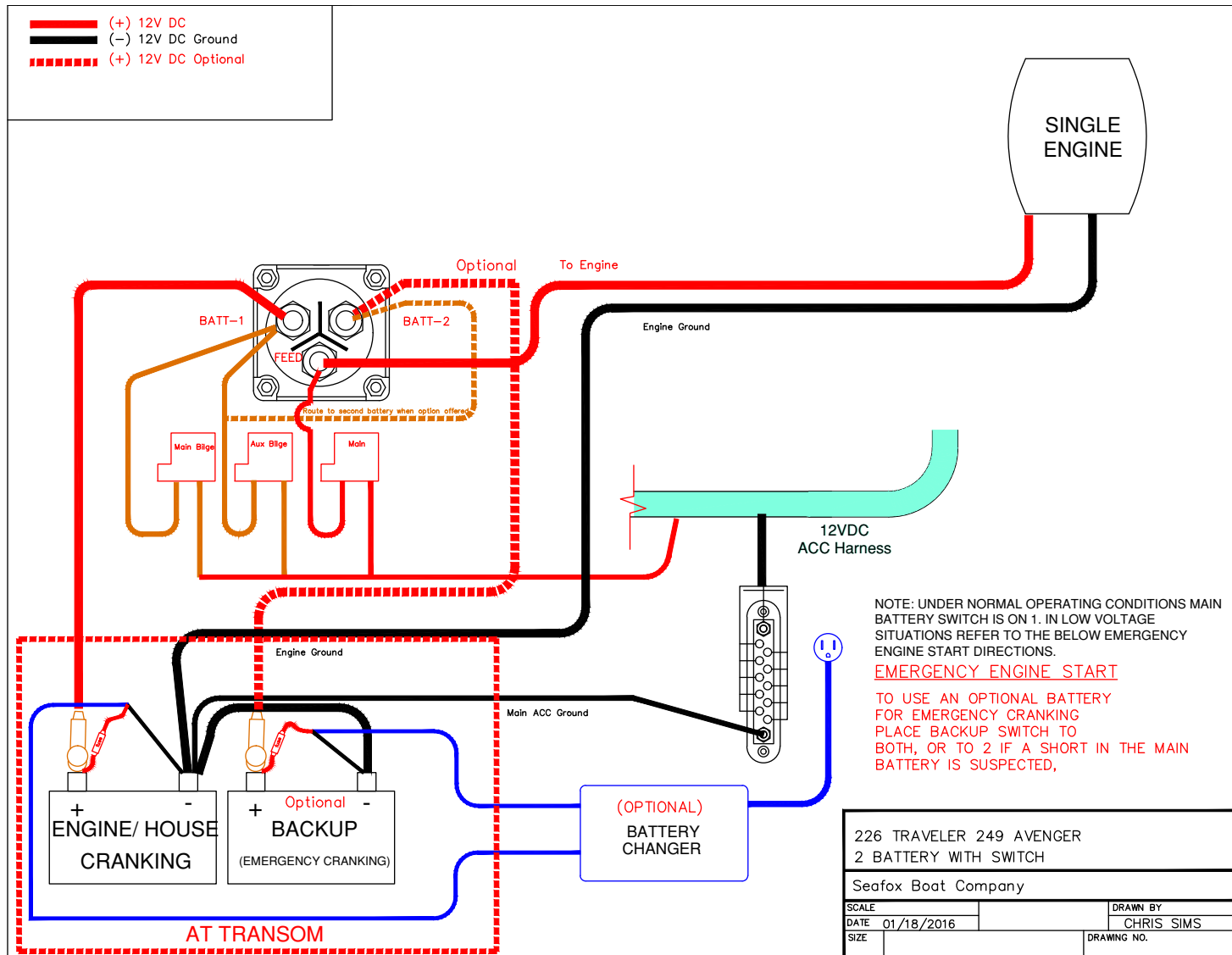
This drawing is the property of SeaFox and must not be used, reproduced or modified in any way without prior written permission.

**249 AVENGER DRAINS**

|               |            |               |
|---------------|------------|---------------|
| DATE: 9/01/15 | SCALE: NTS | SHEET: 1 OF 1 |
|---------------|------------|---------------|

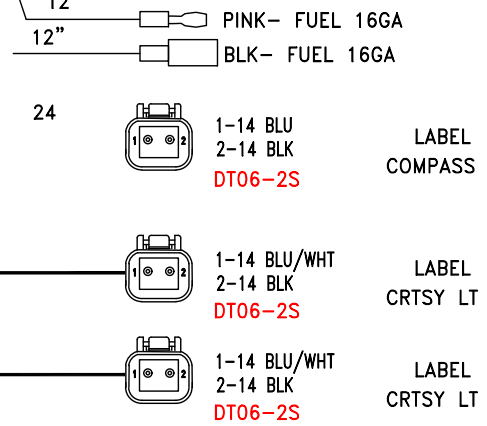
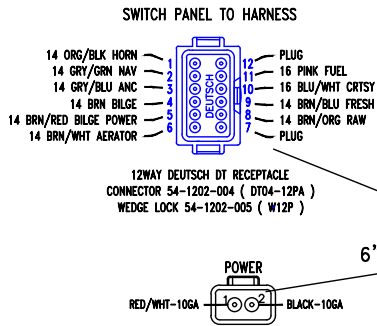
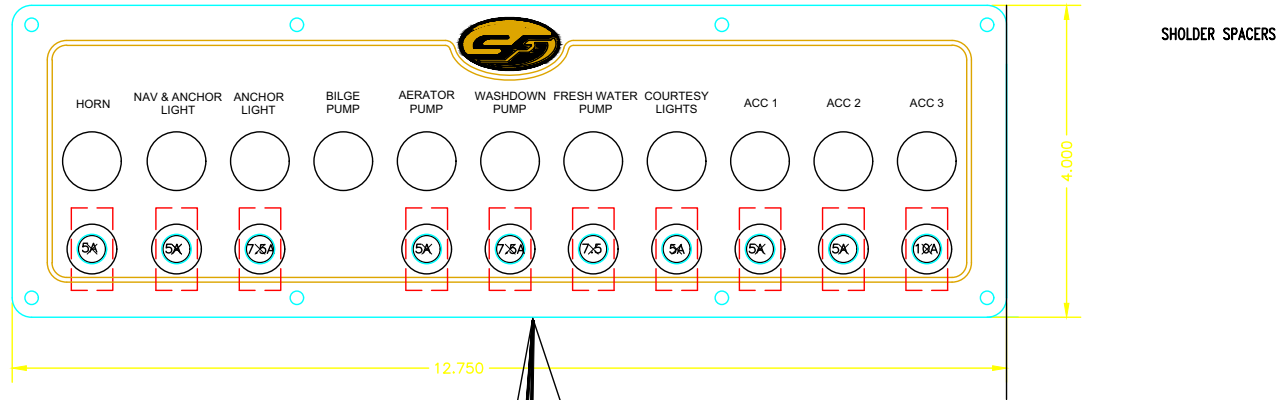
# ELECTRICAL SCHEMATICS

## TYPICAL 2-BATTERY SETUP WITH TRANSOM



PANEL SWITCH DEUTSCH (P/N 6114)

Start Use MY2016



PANEL  
186-206-249

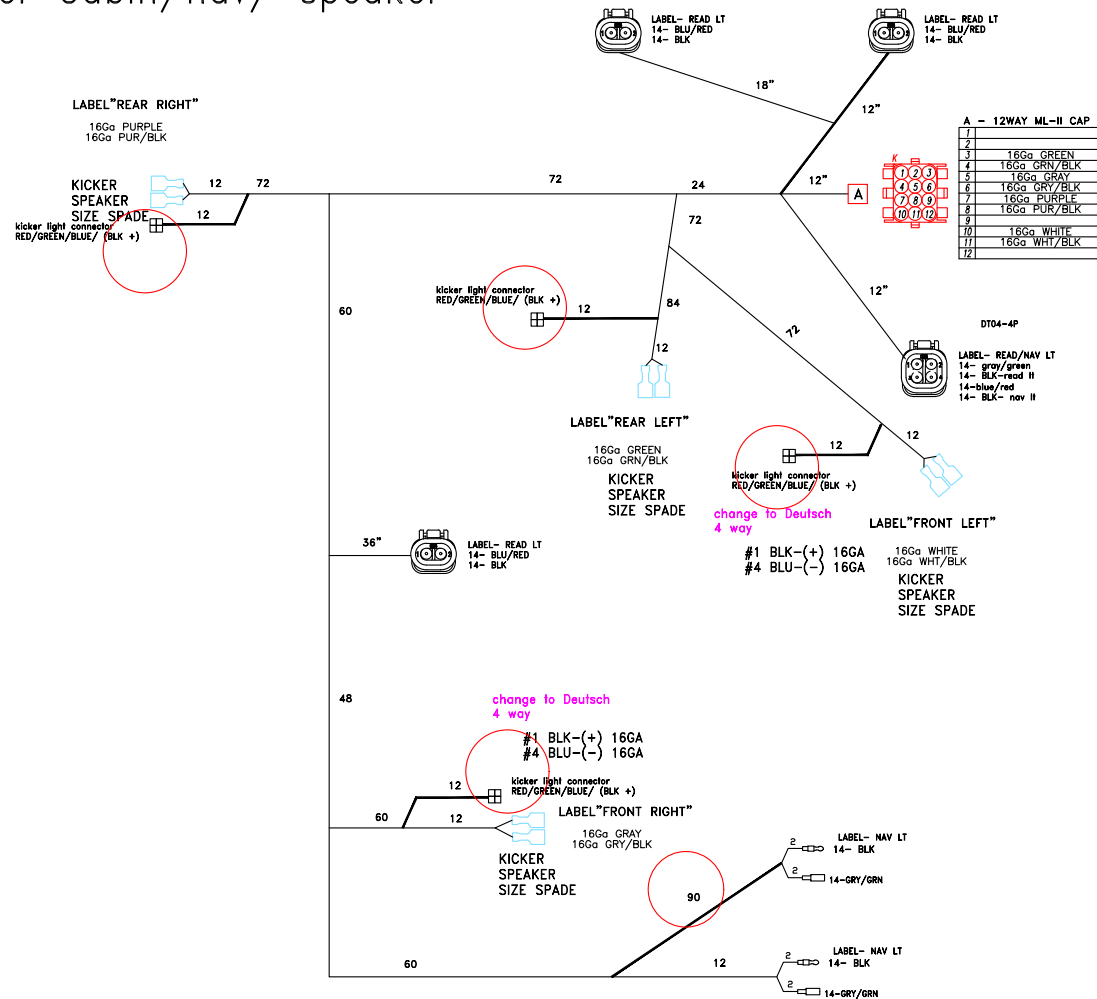
ACC1- MOOD LIGHT  
ACC2- UNDERWATER LT  
ACC3- SPREADER LIGHT

SFX-249-80 (SEAFOX PT# 6114)



### HARNES LINER W/ KICKER/INFIN (P/N 6400)

249 Avenger Cabin/nav/ speaker

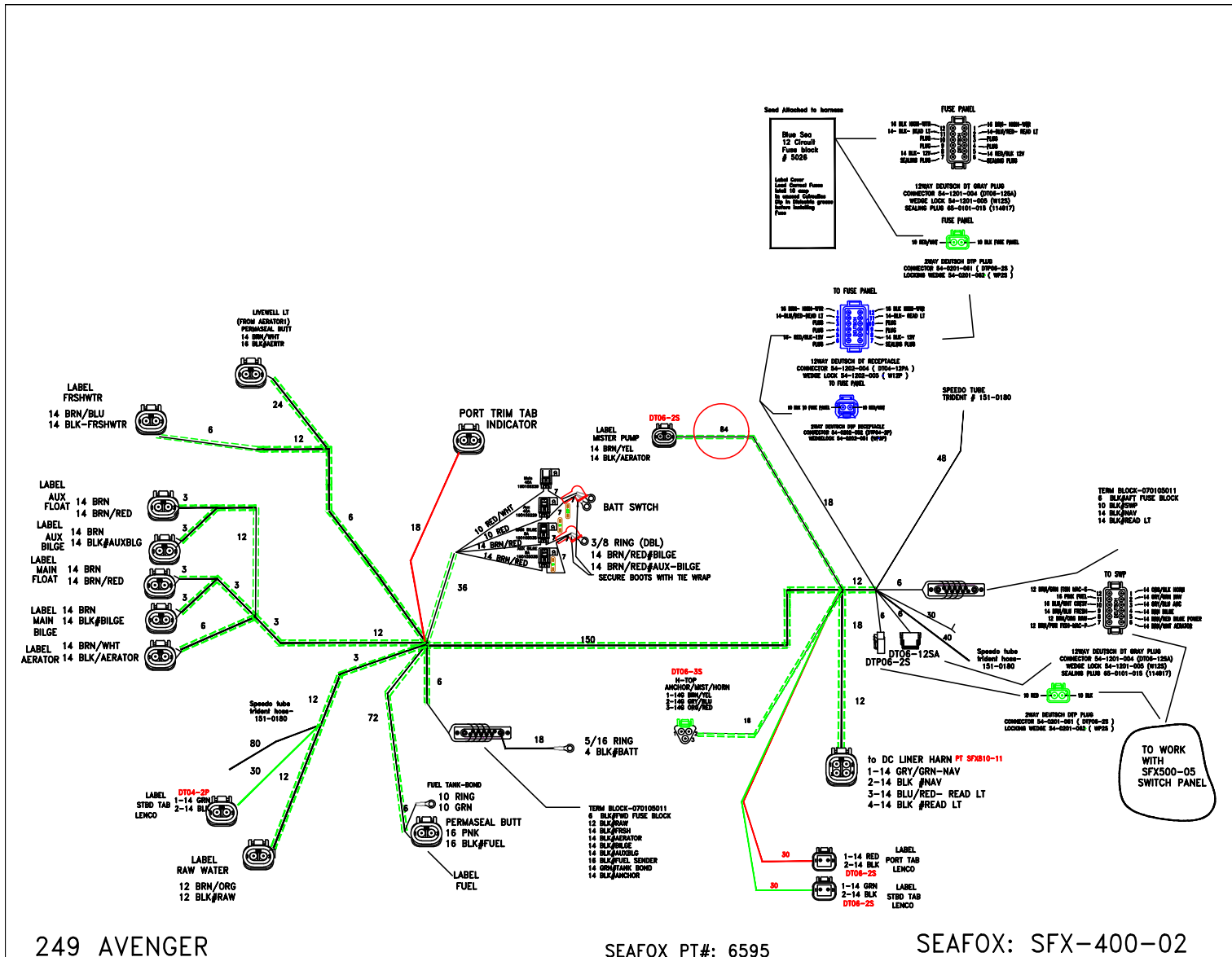


sf# 6400, upm# sfx-676-10B

Avenger Cabin- Nav w/ kicker Harness



HARNES ACC W/ Lenco Deutch (P/N 6595)

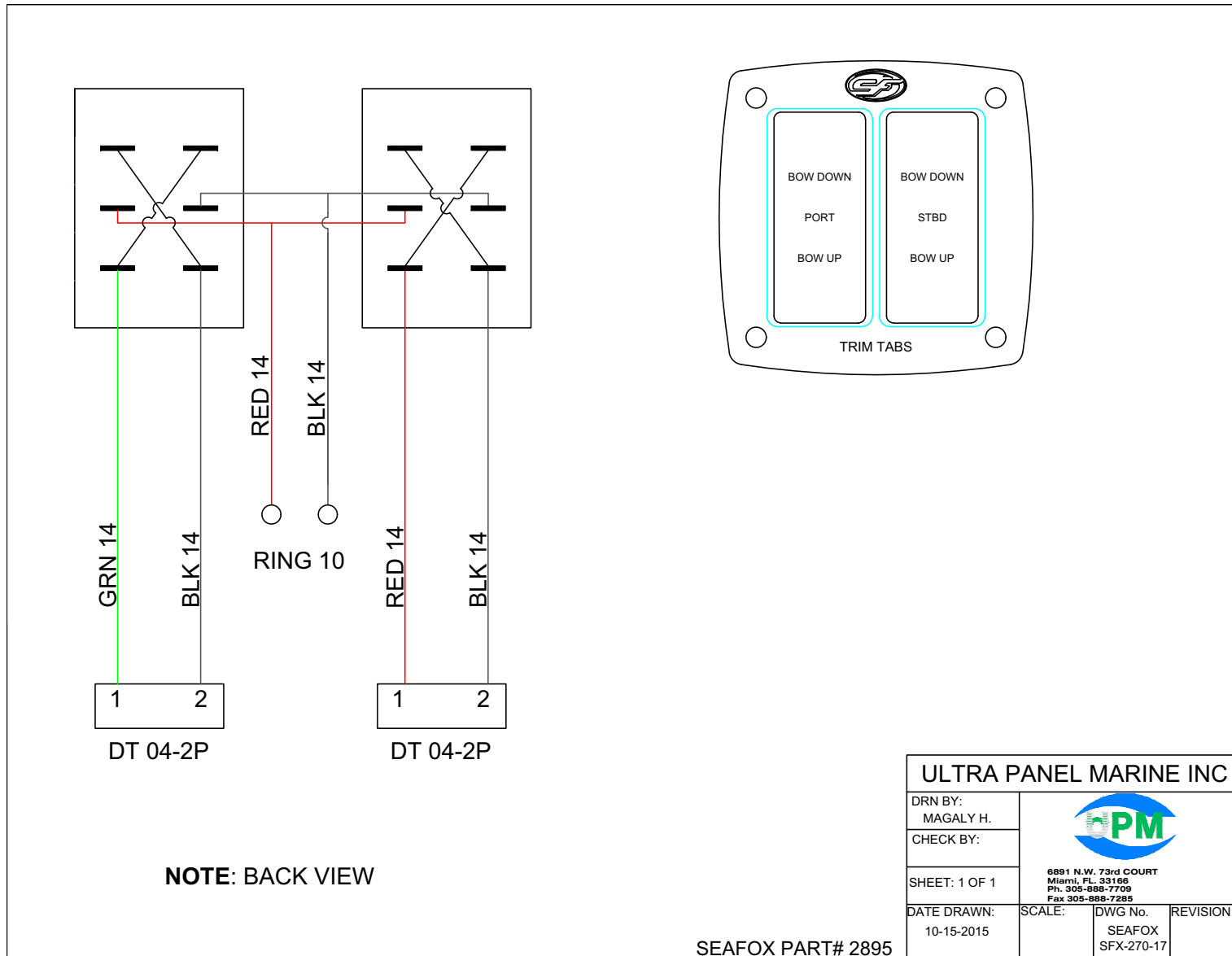


249 AVENGER

SEAFOX PT#: 6595

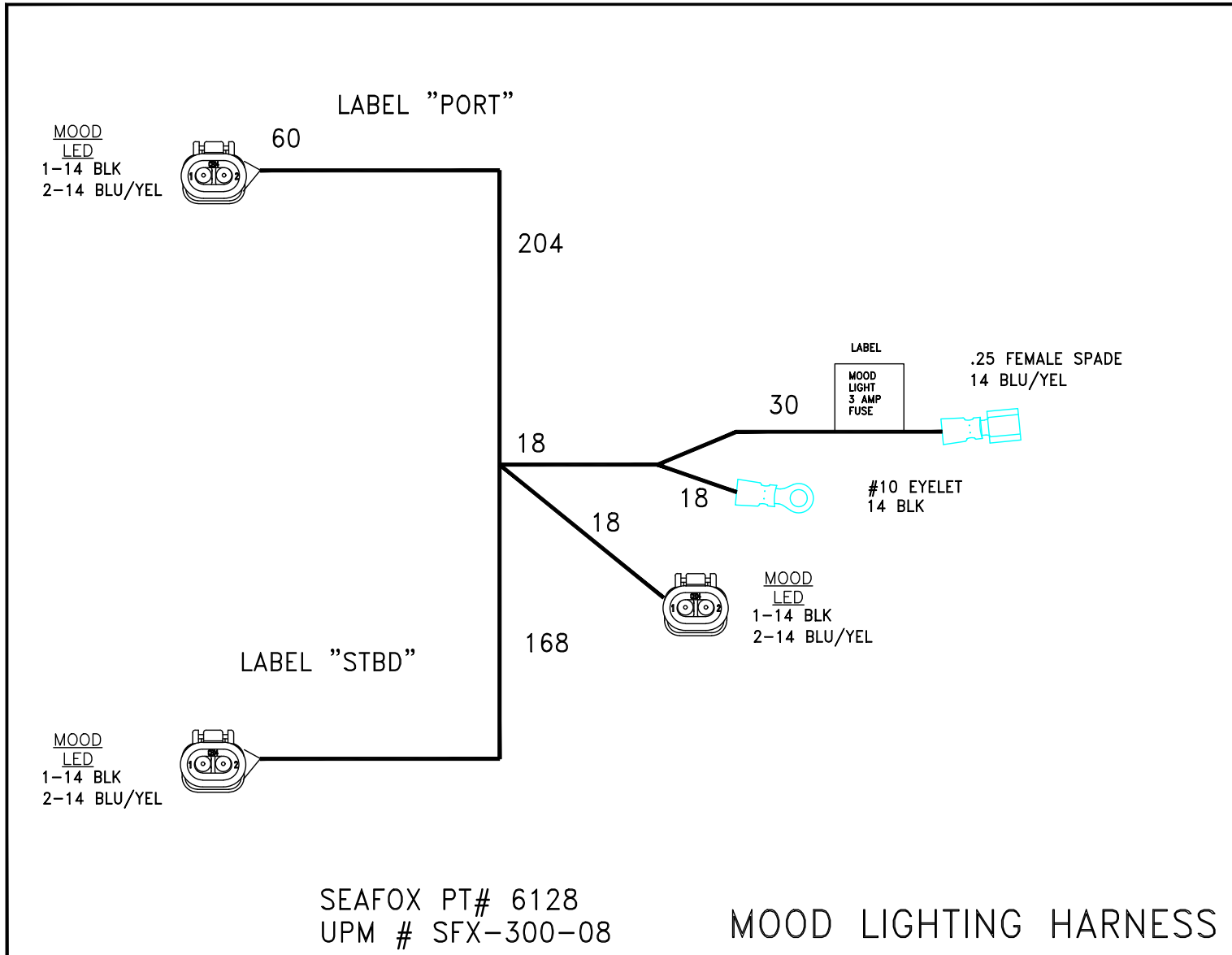
SEAFOX: SFX-400-02

**TRIMTABS ELECTRIC SWITCH STANDARD (P/N 2895) – OPTIONAL**





HARNESS MOOD LT W/ DEUTSCH (P/N 6128) – OPTIONAL



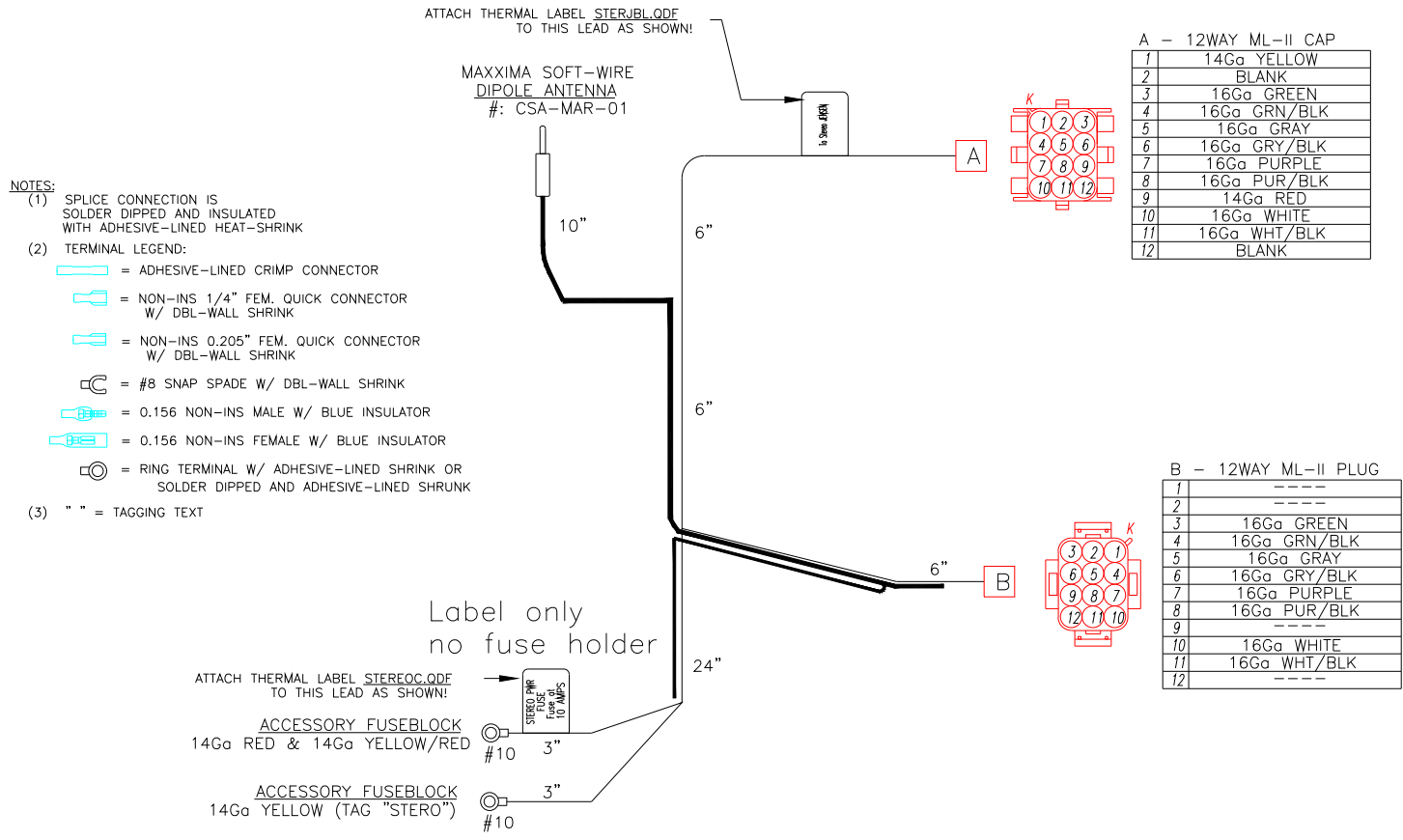
# HARNES STEREO INFINITY CON (P/N 6129) – OPTIONAL

CUSTOMER SEAFOX BOAT CO. W/O # \_\_\_\_\_

PART # 6129 UPM# SFX-300-09 DUE DATE \_\_\_\_\_

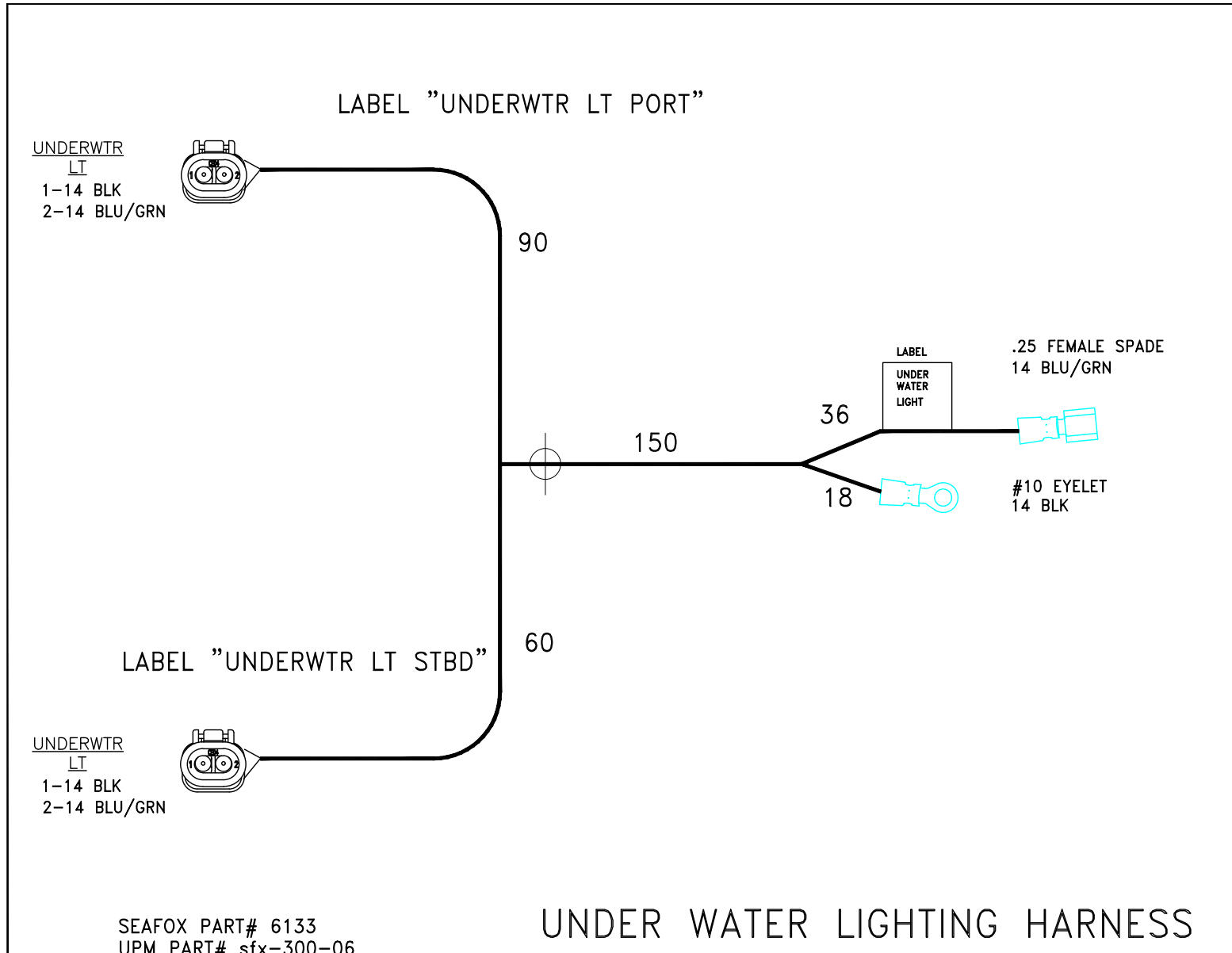
MODEL ALL MODELS

FILENAME \_\_\_\_\_ DESCRIPTION HARNES STEREO INFINITY/JENSEN

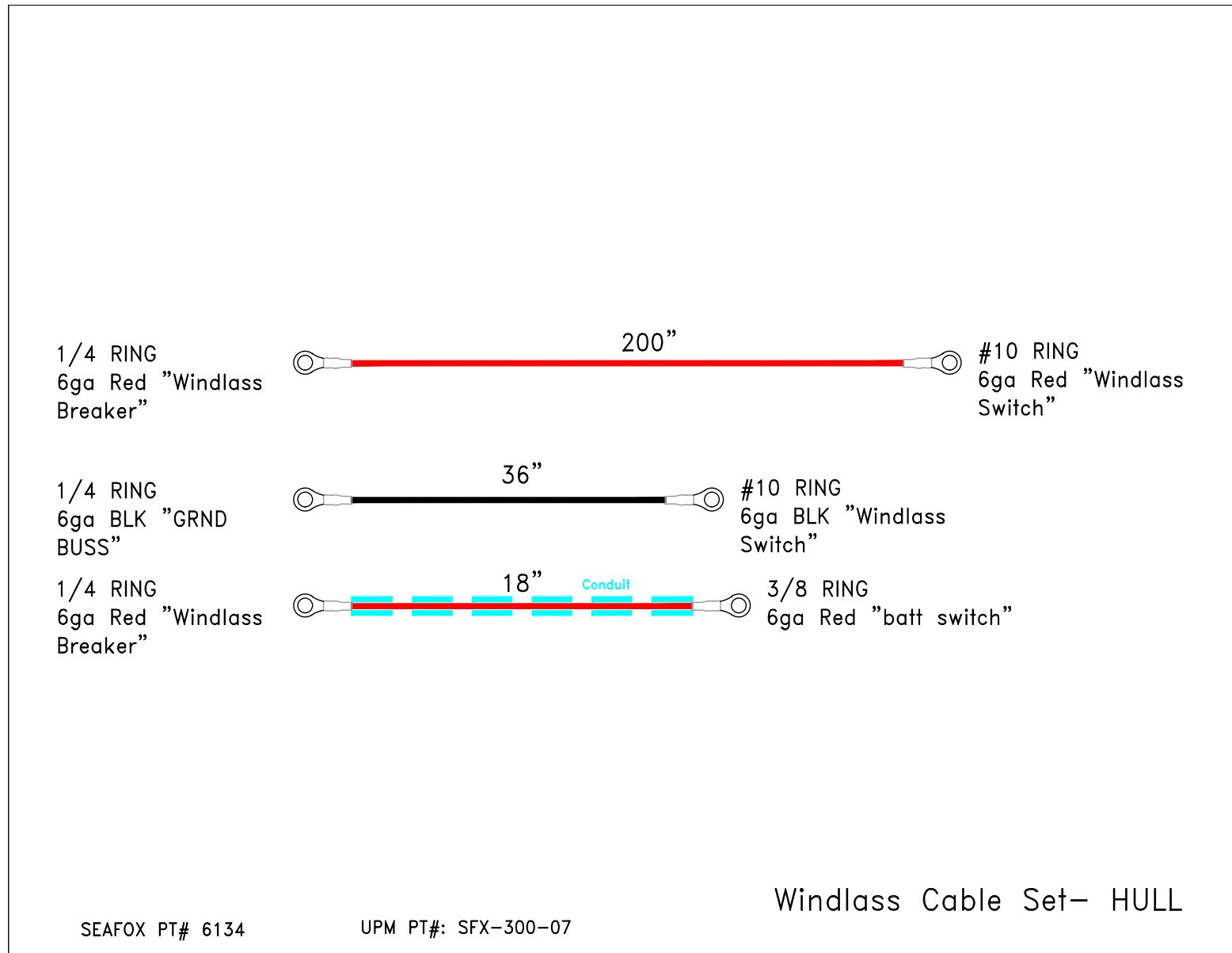




HARNESS UNDERWATER LT W/ DEUTSCH (P/N 6133) – OPTIONAL

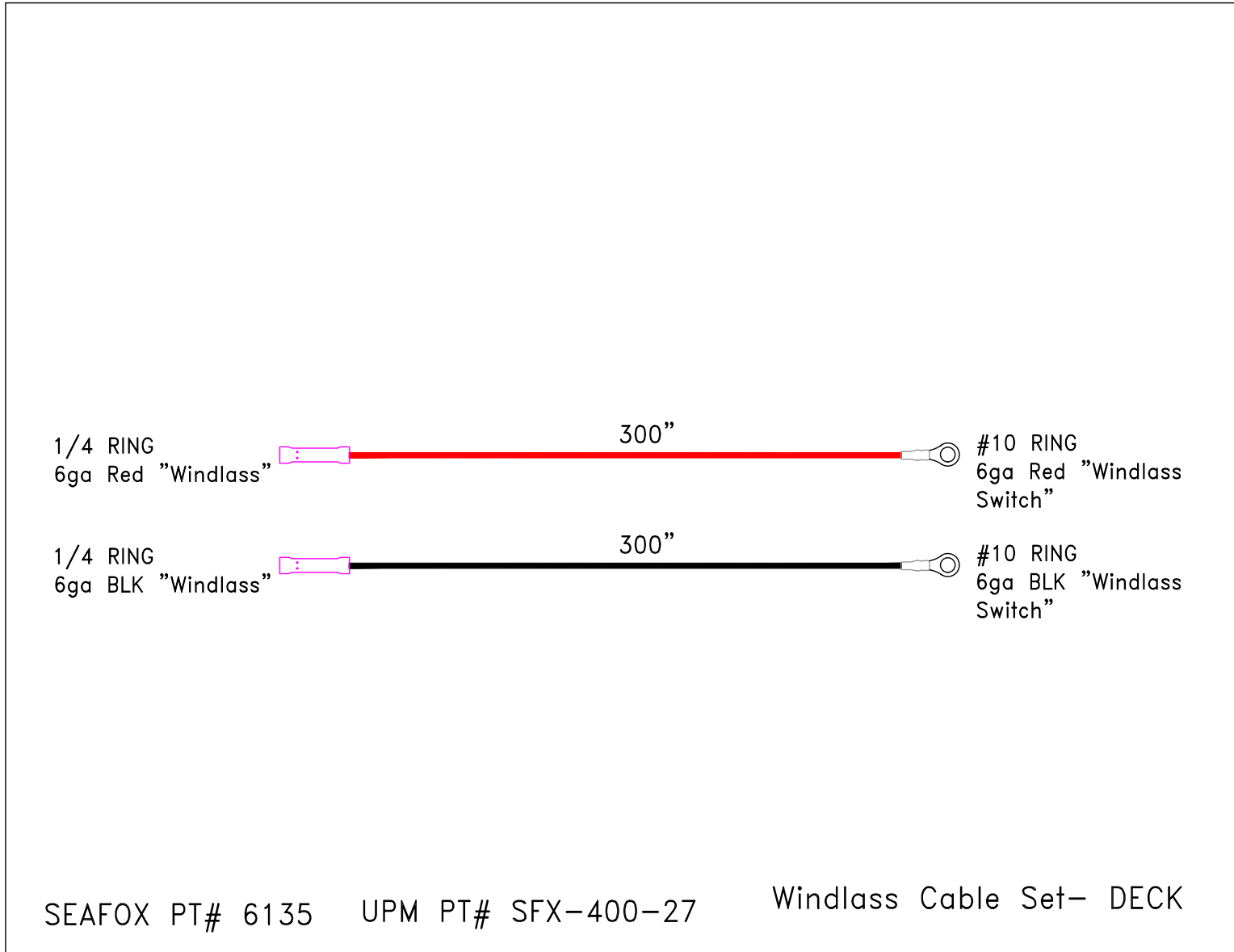


**HARNESS WINDLASS HULL AFT BATTERY (P/N 6134) – OPTIONAL**



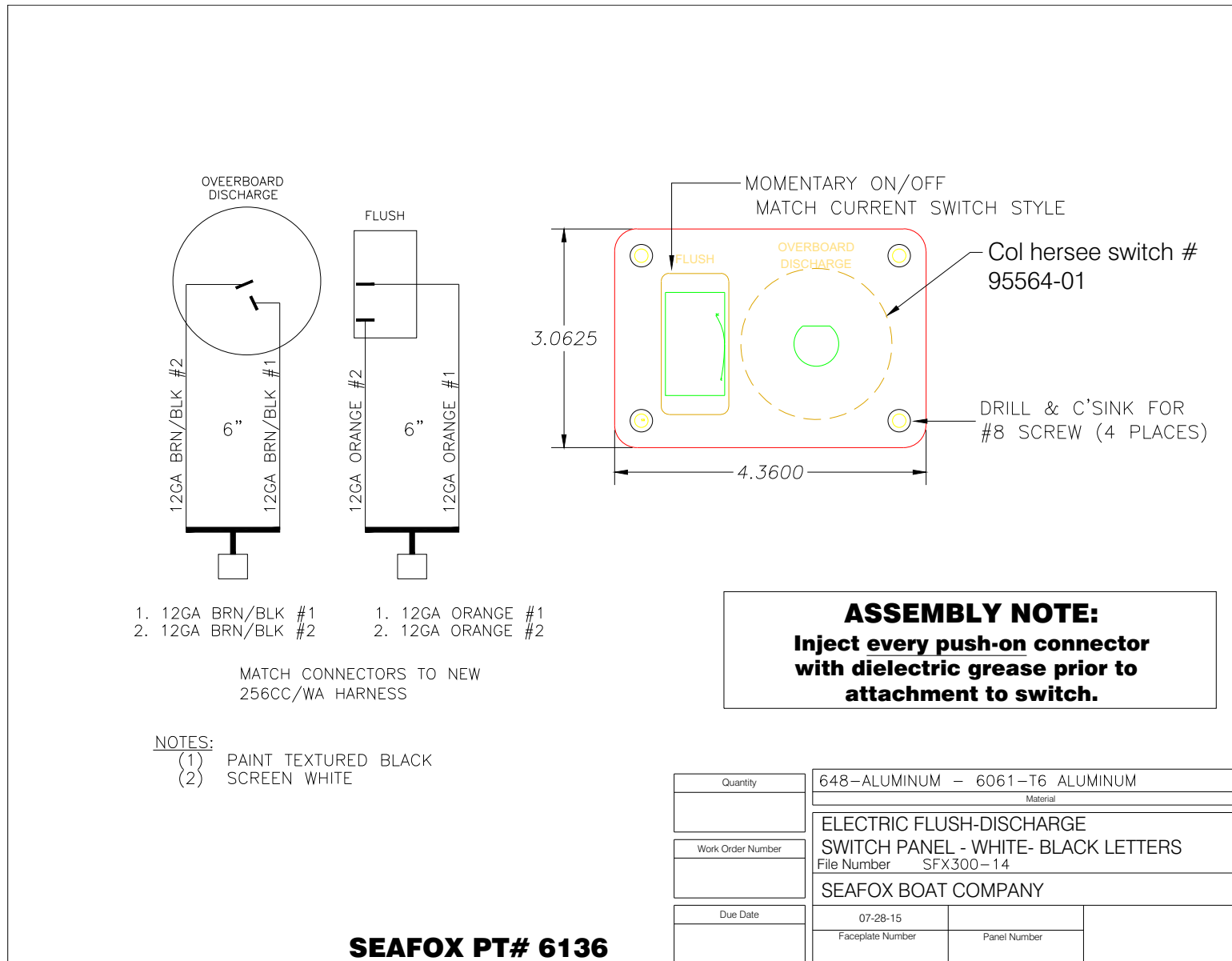


HARNESS WINDLASS DECK OPTION (P/N 6135) – OPTIONAL





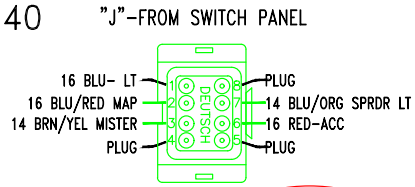
### ELECTRIC FLUSH-DISCHARGE SWITCH PANEL (P/N 6136) – OPTIONAL



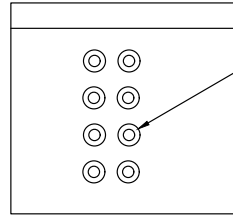
**U PANEL SWITCH ULTIMA (P/N 6463) – OPTIONAL**

SEAFOX PT# 6463  
UPM PT# SFX-600-40

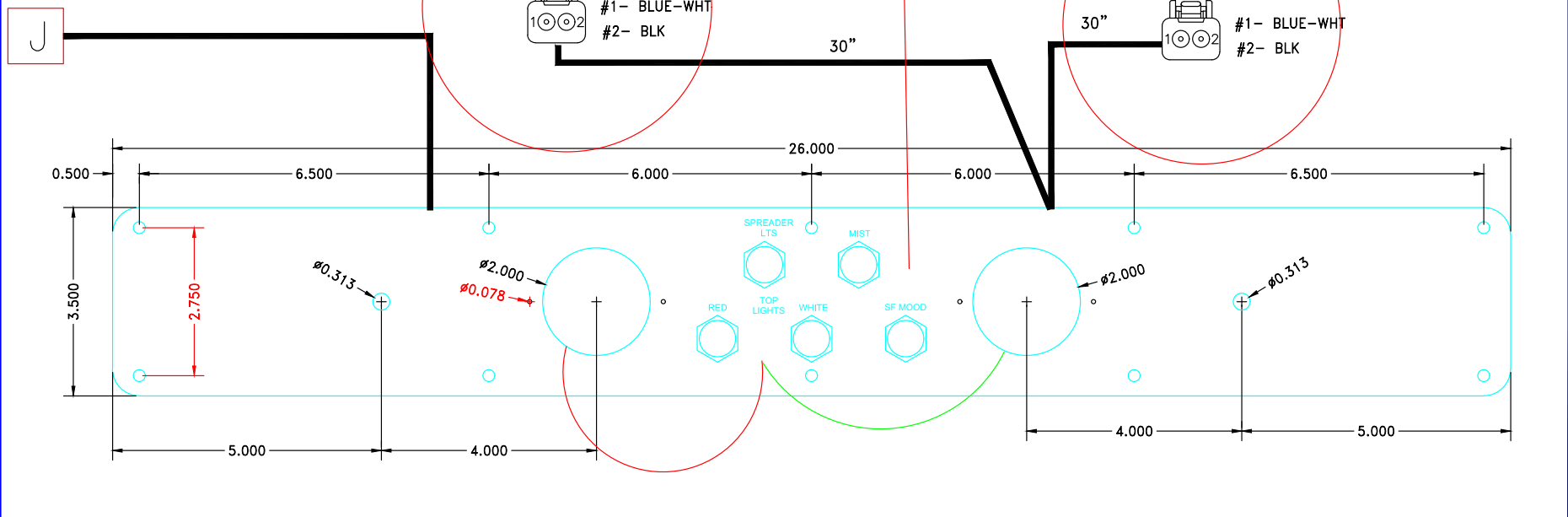
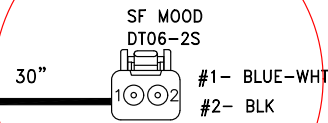
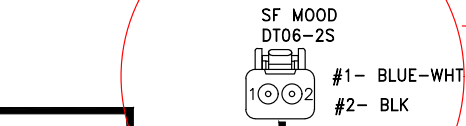
3 OF 3



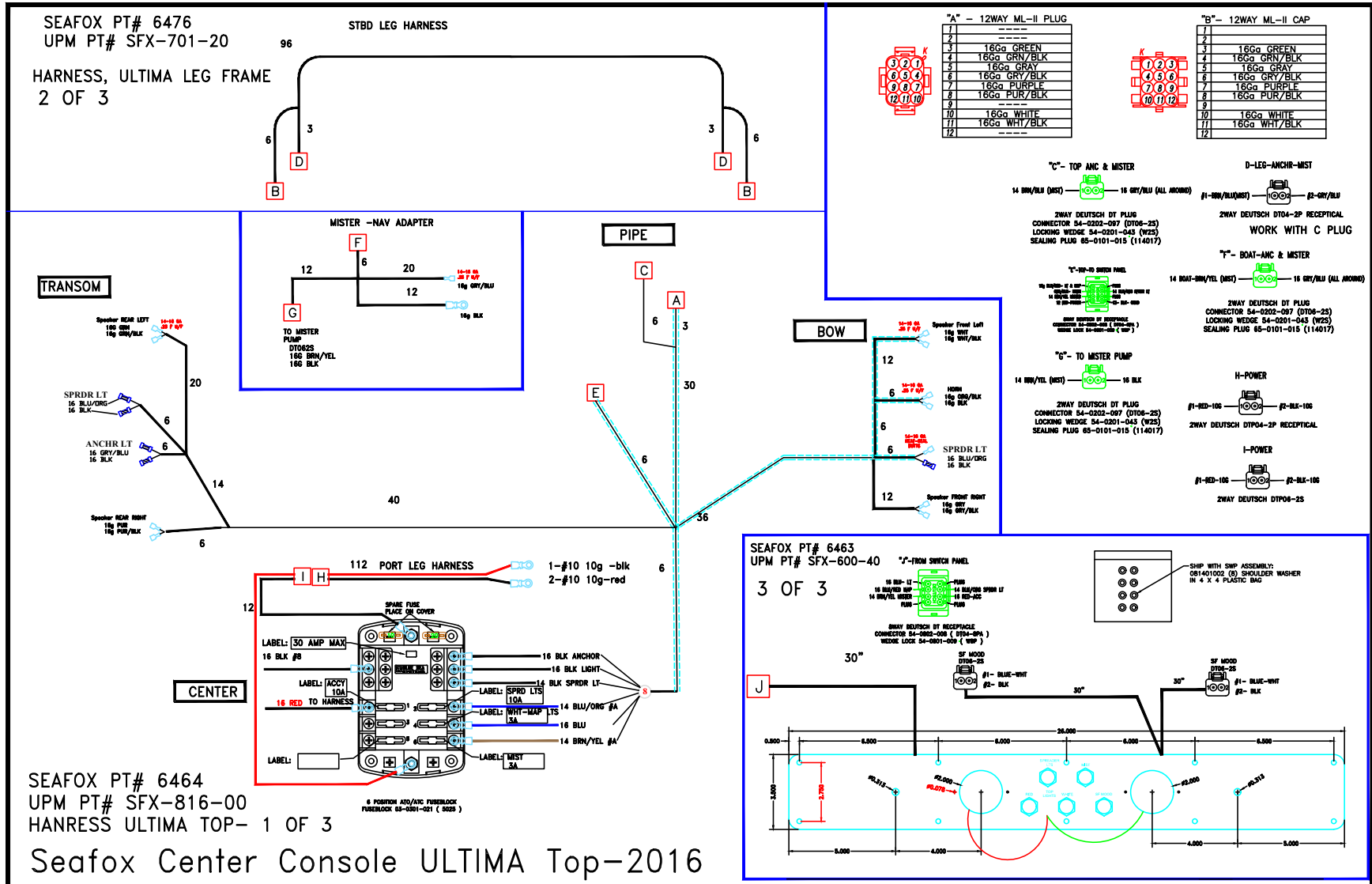
8WAY DEUTSCH DT RECEPTACLE  
CONNECTOR 54-0802-008 ( DT04-8PA )  
WEDGE LOCK 54-0801-009 ( W8P )



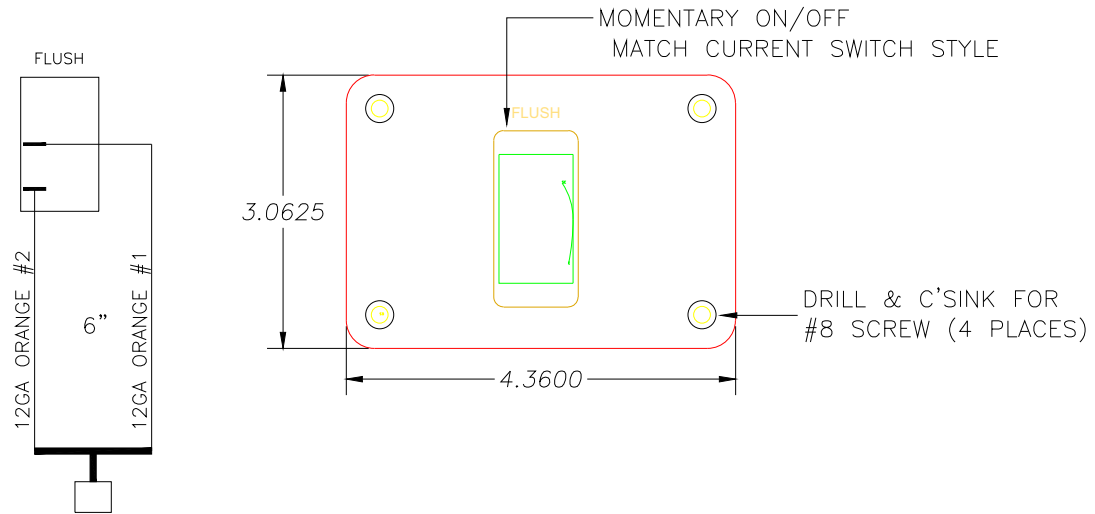
SHIP WITH SWP ASSEMBLY:  
081401002 (8) SHOULDER WASHER  
IN 4 X 4 PLASTIC BAG



**CENTER CONSOLE ULTIMA TOP – 2016 (P/N 6463, 6464 AND 6476) – OPTIONAL**



**ELECTRIC FLUSH SWITCH PANEL (P/N 6870) – OPTIONAL**



1. 12GA ORANGE #1
2. 12GA ORANGE #2

MATCH CONNECTORS TO NEW 256CC/WA HARNESS

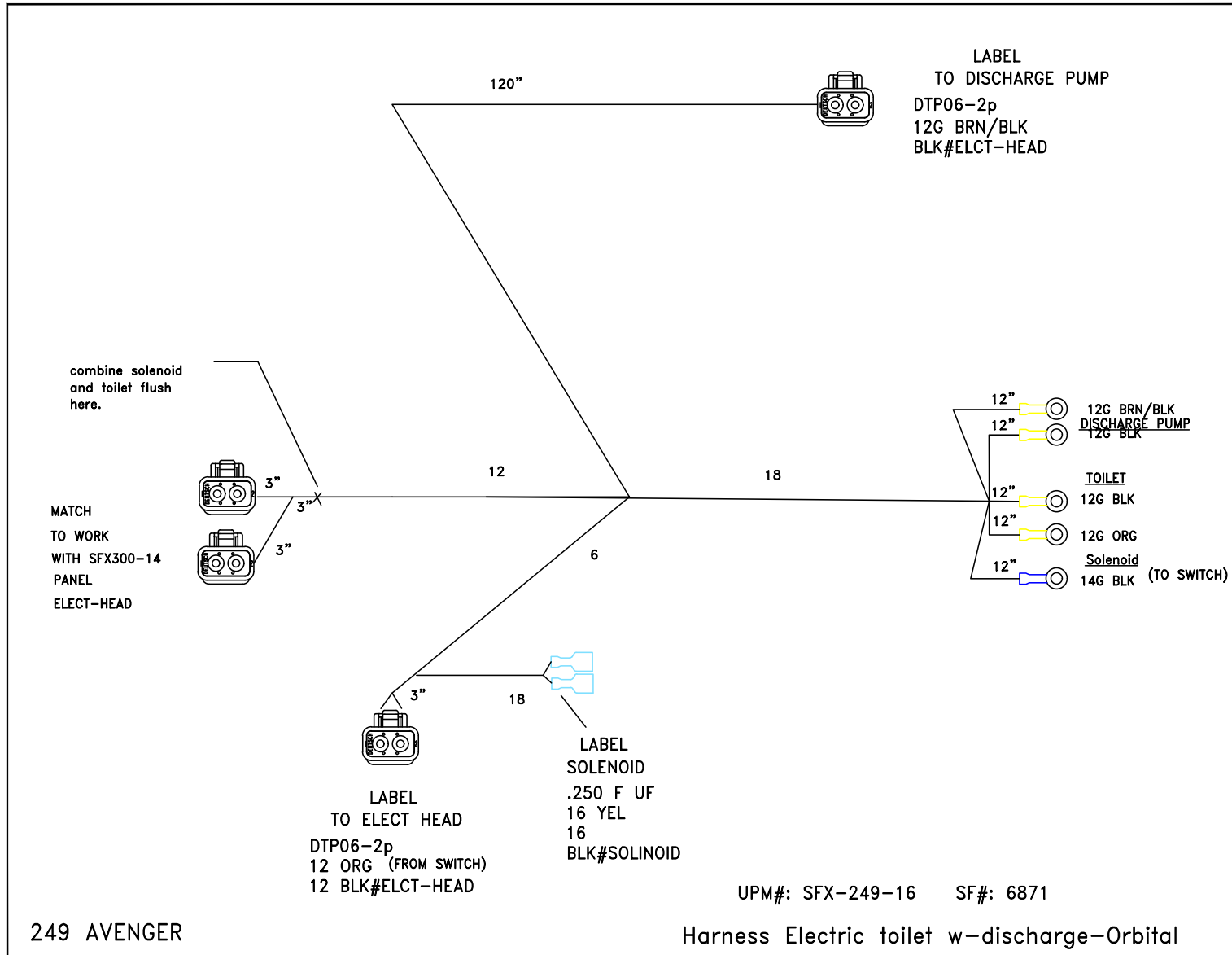
- NOTES:
- (1) PAINT TEXTURED BLACK
  - (2) SCREEN WHITE

**ASSEMBLY NOTE:**  
**Inject every push-on connector with dielectric grease prior to attachment to switch.**

**SF# 6870 UPM# SFX-028-11**

|                   |  |              |
|-------------------|--|--------------|
| Quantity          | 648-ALUMINUM - 6061-T6 ALUMINUM                    |              |
|                   | Material   |              |
| Work Order Number | ELECTRIC FLUSH SWITCH PANEL - BLACK- WHITE LETTERS |              |
|                   | File Number  |              |
|                   | SEAFOX BOAT COMPANY                                |              |
| Due Date          | 07-28-15   |              |
|                   | Faceplate Number                                   | Panel Number |

**HEAD HARNESS ORB 249AV (P/N 6871) – OPTIONAL**





This Page Intentionally Left Blank





**Sea Fox Boat Company, Inc.**  
2550 Highway 52  
Moncks Corner, SC 29461-5024

Telephone: 843-761-6090  
[www.seafoxboats.com](http://www.seafoxboats.com)

Ken Cook Co.  
Printed in U.S.A.  
Rev 0819