



Owner's Manual Supplement

www.SeaFoxBoats.com

SEA FOX BOAT'S DISCLAIMER

The following Owner's Manual is provided for information and educational purposes only and is not intended to offer or provide legal advice or create a contractual relationship between Sea Fox Boat Company and the owner of any Sea Fox brand vessel. Please beware that as a vessel owner you have non-delegable responsibilities regarding the safety, maintenance, fitness, and operation of your vessel and the extent of such responsibilities is ultimately determined by Federal law and regulations, the general maritime law of the United States, the laws and regulations of the states and territories of the United States, or the laws and regulations of the country where you operate your vessel. To fully understand your responsibilities as a vessel owner, and before operating or letting any third party operate your vessel, we recommend that you consult the services of a qualified lawyer in admiralty and maritime law.

TABLE OF CONTENTS

Introduction	3	Harness Nav Short	16
Specifications	3	Harness Kicker Only 6-Speaker	17
Designated Occupant Seating	4	Harness JL 6-Speaker	18
Plumbing Schematics	5	JL Audio Breaker Kit Short	19
Commander Bilge System	5	Trimtabs Electrical Switch Standard (P/N 2895) – Optional . . .	20
Commander Drains	6	Harness Mood Light w/Deutsch (P/N 6128) – Optional	21
Commander Drains (continued)	7	Harness Stereo Infinity Con (P/N 6129) – Optional	22
Commander Electric Head System	8	Harness Stereo Infinity Deck (P/N 6130) – Optional	23
Commander Fresh Water System	9	Harness Underwater Light w/Deutsch (P/N 6133) – Optional ..	24
Commander Fuel System	10	Harness Windlass Deck (P/N 6135) – Optional	25
Commander Livewell System	11	Head Panel Switch ORB (P/N 6136) – Optional	26
Commander Electric Head with Overboard Discharge System .	12	Harness Stereo Kicker Con 2016 (P/N 6851) – Optional	27
Commander Pod Livewell System	13	Harness Stereo Kicker Deck 2016 (P/N 6852) – Optional	28
Commander Fresh Water System	14	Head Panel Switch ORB (P/N 6870) – Optional	29
Electrical Schematics	15	Head Harness ORB (P/N 6874) – Optional	30
Typical 2-Battery Setup in Console	15	U Panel Switch/Harness Ultima (P/N 7277) – Optional	31



This Page Intentionally Left Blank

INTRODUCTION

Congratulations and Welcome Aboard! With so many boat brands to choose from, we want to congratulate you on your decision to choose Sea Fox Boats. For more than 24 years, Sea Fox offers the finest hand-crafted saltwater boats carefully balanced with the build-quality, features, styling and performance for the fairest price. Our passion for boating is evident in every model we make and we appreciate that you've noticed the Sea Fox difference.

We share your love for the moments spent on the water with friends and family, which is why every Sea Fox boat offers a unique blend of fishing/family options, technologies and innovative features. Your choice of a Sea Fox affirms that you have performed your research and compared the value of your model with the competition.

Whether you are new to the boating lifestyle or an old salt, we ask that **you and all other operators** read the owner's manual, this supplement, and all other literature provided with the boat **before** operating the boat or any equipment. We also recommend that all operators enroll in a boating safety course available online - see References and Contact Information in this section for education resources online.

This supplement contains model-specific information not included with the owner's manual. This manual is not intended to be a replacement for specific product literature provided by engine, accessory or other major equipment manufacturers, but rather to supplement that information.

Because of our philosophy of continuous product improvement, this manual serves as a general guide only, so the specifications and illustrations used may not match the equipment on your boat and are intended only as general reference views.

We welcome you to the Sea Fox family and wish you many years of boating enjoyment!

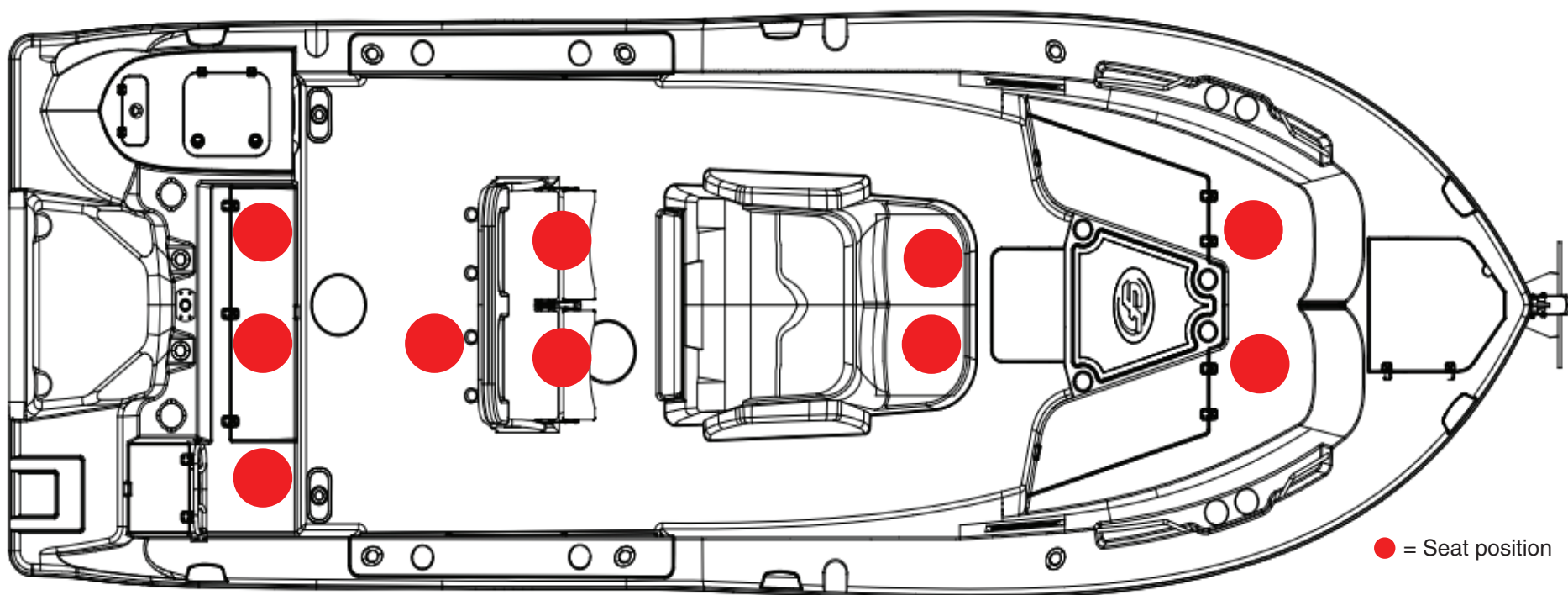
SPECIFICATIONS

Max. Weight Capacity	2500 lbs (1134 kg)
Persons	10
Persons Weight	1500 lbs (680 kg)
Max. HP	300 hp (224 kw)
L.O. A.	24' 4" (7.41 m)
Beam	8' 6" (2.59 m)
Draft	14 in. (0.36 m)
Height, Keel to Top (Light Folded)	115 in. (2.92 m)
Bridge Clearance Hard Top	99 in. (2.51 m)
Max. Weight Boat (w/ Fluids, Largest HP)	5260 lbs (2386 kg)
Fuel Tank Capacity	117 gal (443 L)
Freshwater Tank Capacity	12 gal (45 L)
Holding Tank Capacity	12 gal (45 L)



DESIGNATED OCCUPANT SEATING

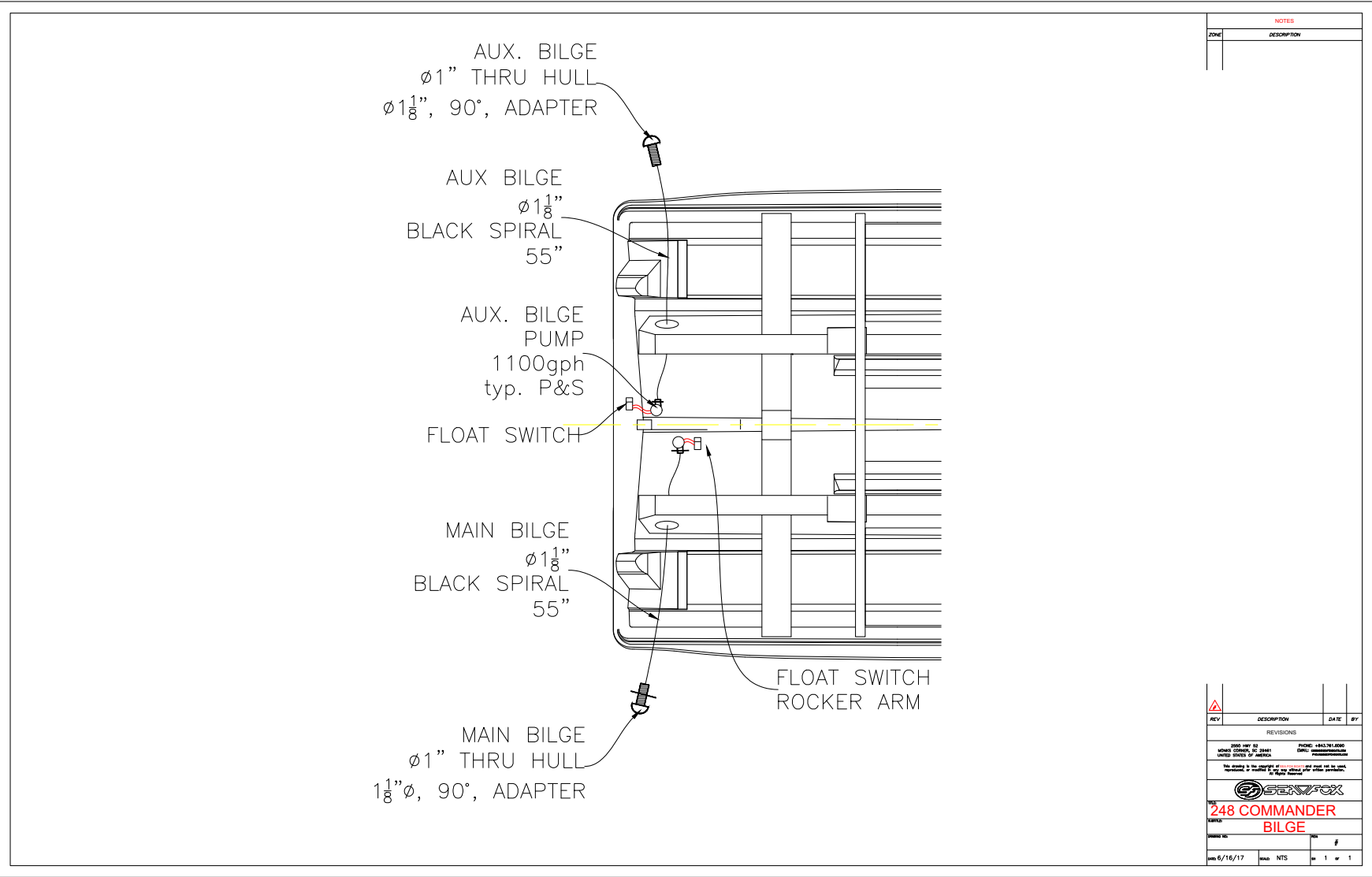
Be sure all passengers are properly seated in designated seating positions and not riding on the bow, bow pulpit, deck, gunwale or rear sun deck while underway. Passengers must use hand-holds and use caution when riding in the bow. Move to the aft passenger seats during rough water operation or if visibility is restricted.



SFOX-0011

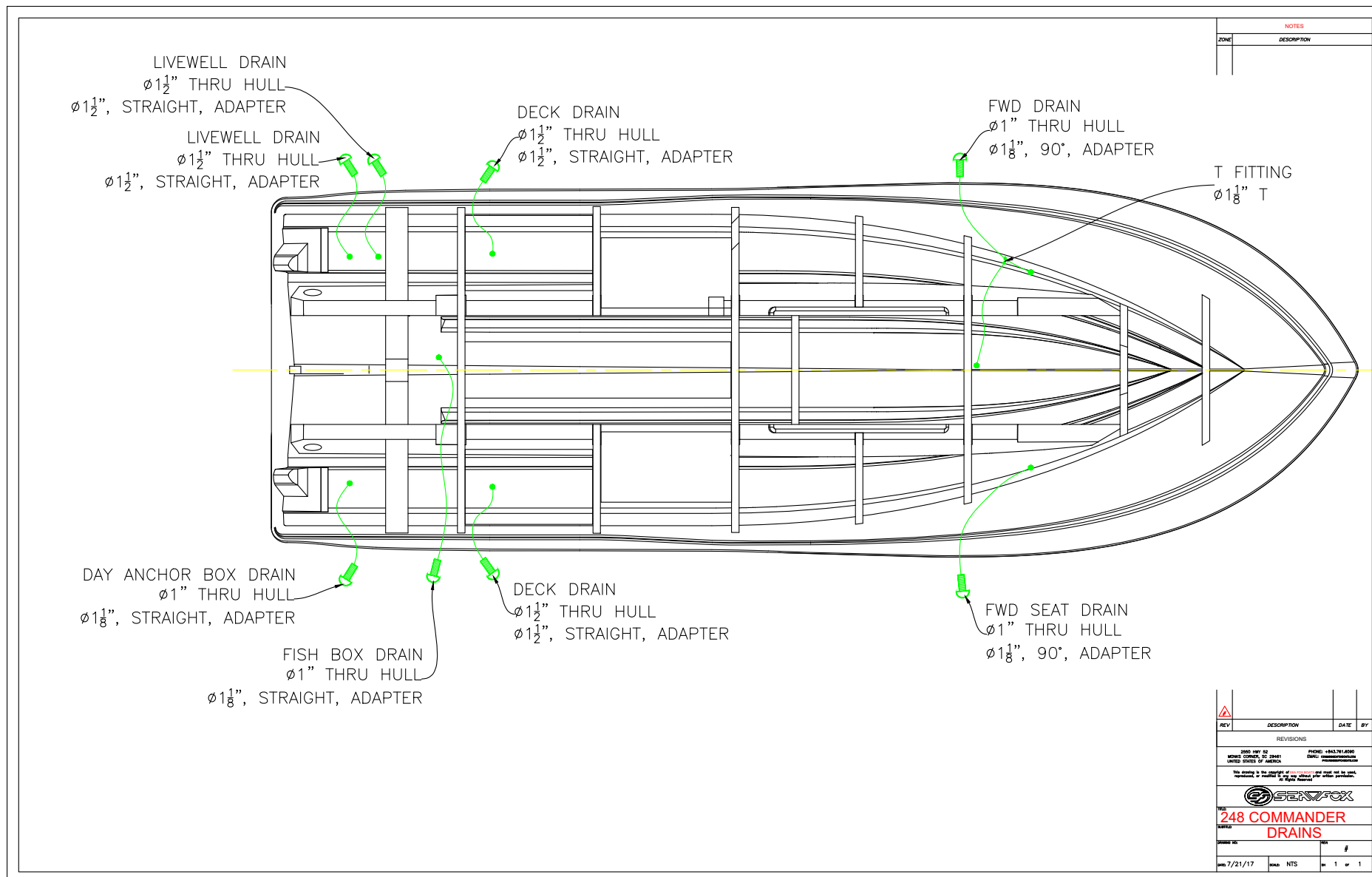
PLUMBING SCHEMATICS

COMMANDER BILGE SYSTEM



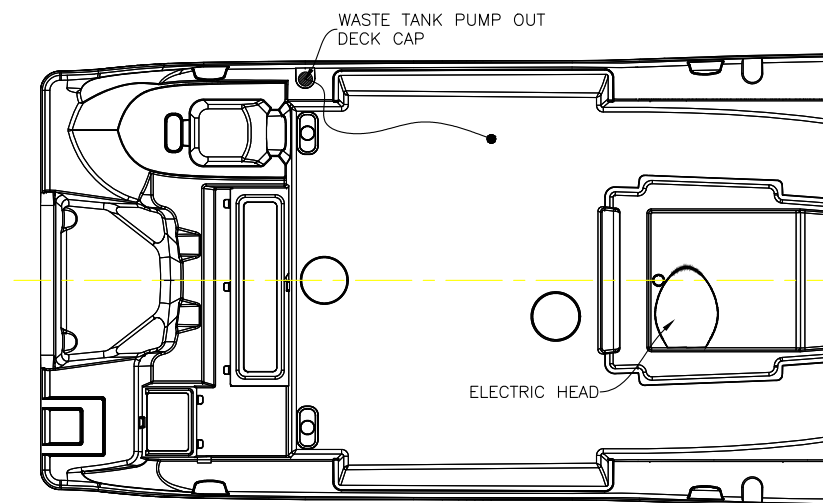


COMMANDER DRAINS (CONTINUED)

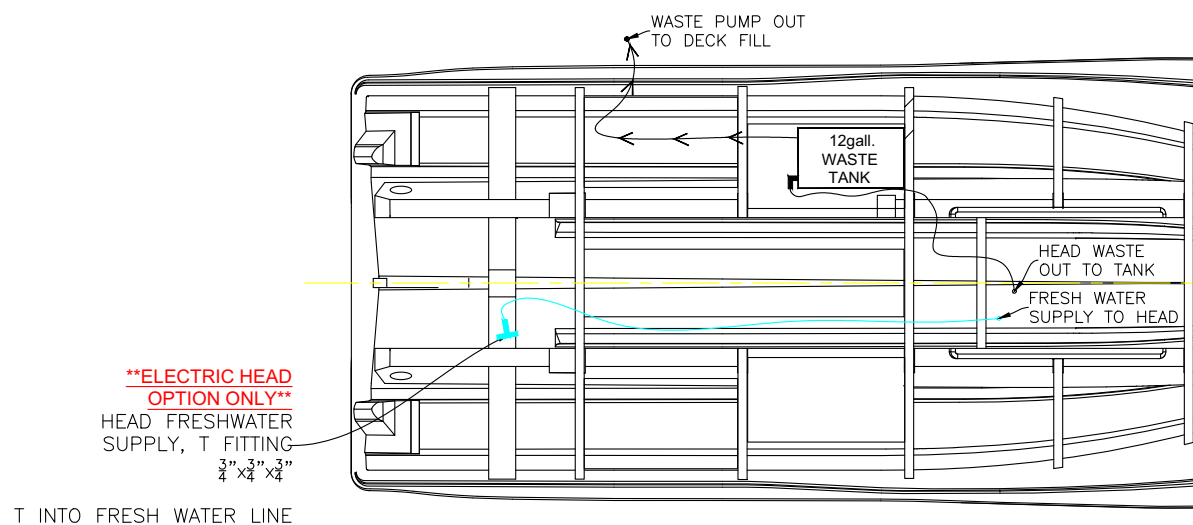




COMMANDER ELECTRIC HEAD SYSTEM

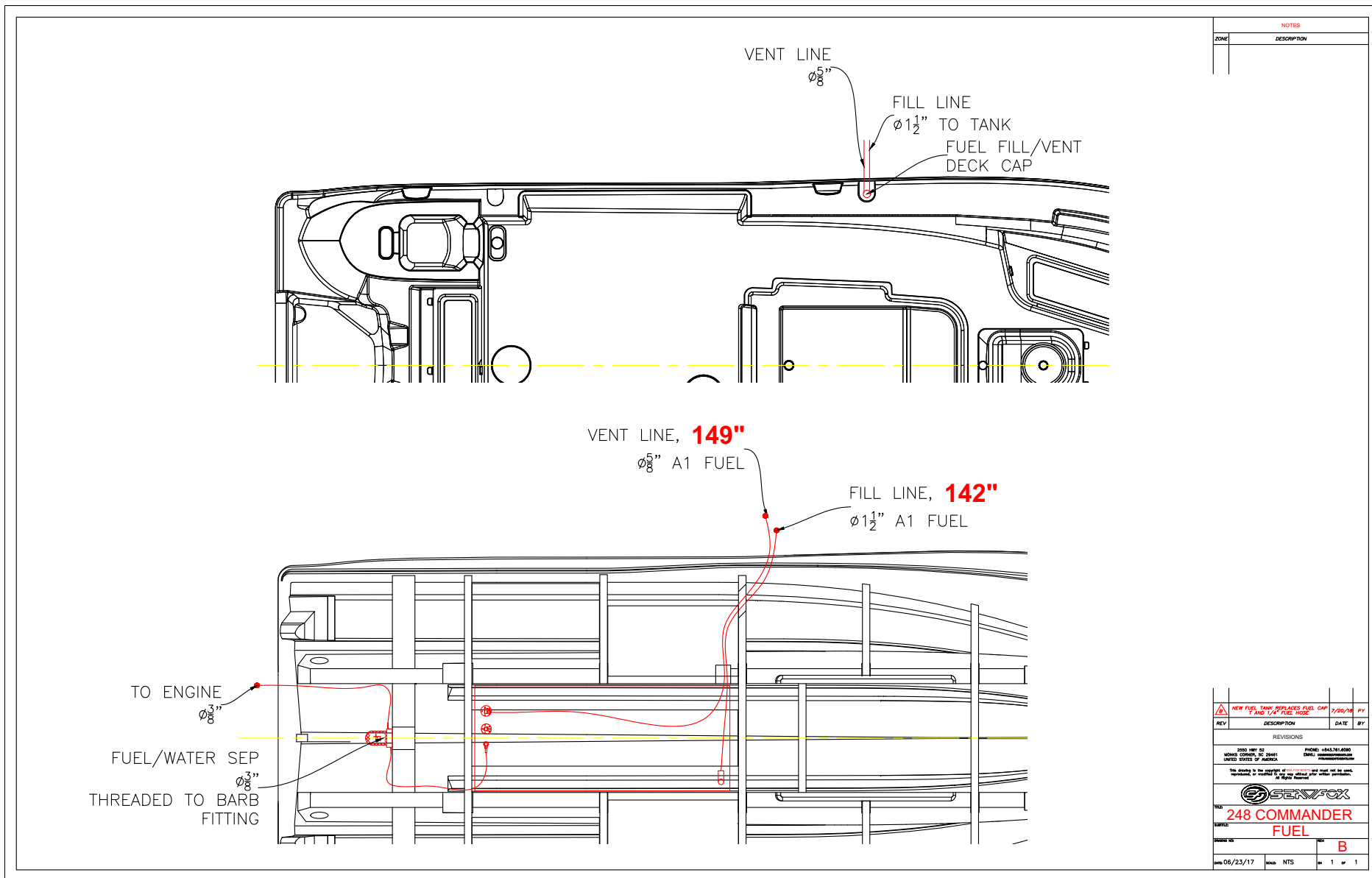


NOTES	
ZONE	DESCRIPTION



REV	DESCRIPTION	DATE	BY
REVISIONS			
2000	REV 02	PHONE: +845.761.6000	
2000	COMP. 02 0001	EMAIL: commander@seafox.com	
UNITED STATES OF AMERICA			
This drawing is the property of SeaFox and shall not be used, reproduced or modified in any way without prior written permission. All Rights Reserved.			
246 COMMANDER MY18 ELEC HEAD			
DATE	REV	#	
06/15/2017	INTS	1 of 1	

COMMANDER FUEL SYSTEM



COMMANDER LIVEWELL SYSTEM

NEW LIVEWELL DRAIN
1 $\frac{1}{8}$ "-1 $\frac{1}{8}$ " GEM ADAPTER

Ø1 $\frac{1}{8}$ " TO HULL SIDE

Ø1 $\frac{1}{8}$ " DRAIN TO HULL SIDE


TO LIVEWELL FILL
ON DECK

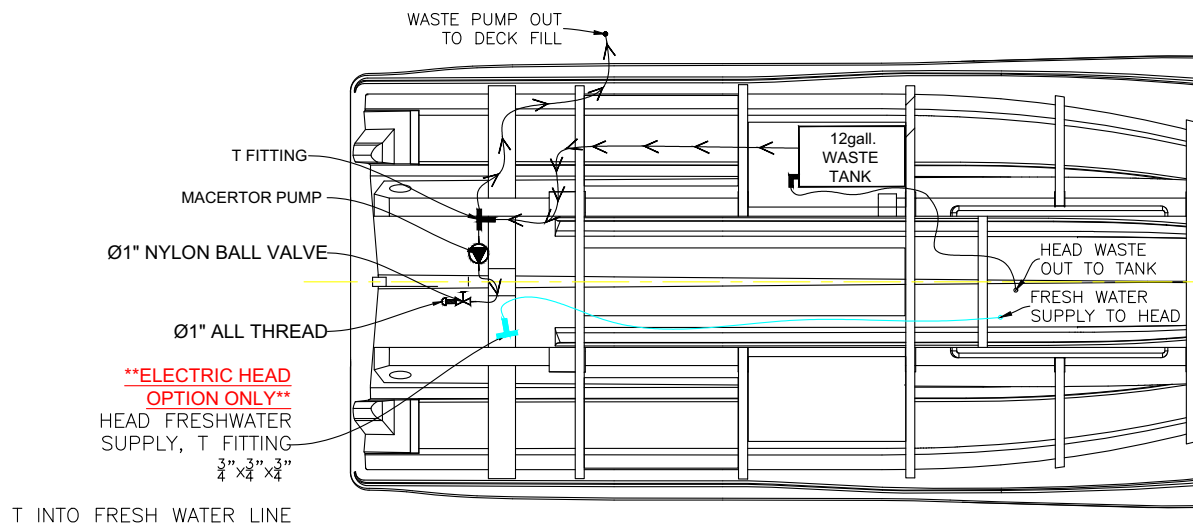
BATIWELL PUMP
Ø $\frac{3}{4}$ "



Ø $\frac{3}{4}$ " THRU HULL
BRASS SCOOP

Ø $\frac{3}{4}$ " NYLON
BALL VALVE

NOTES	
ZONE	DESCRIPTION

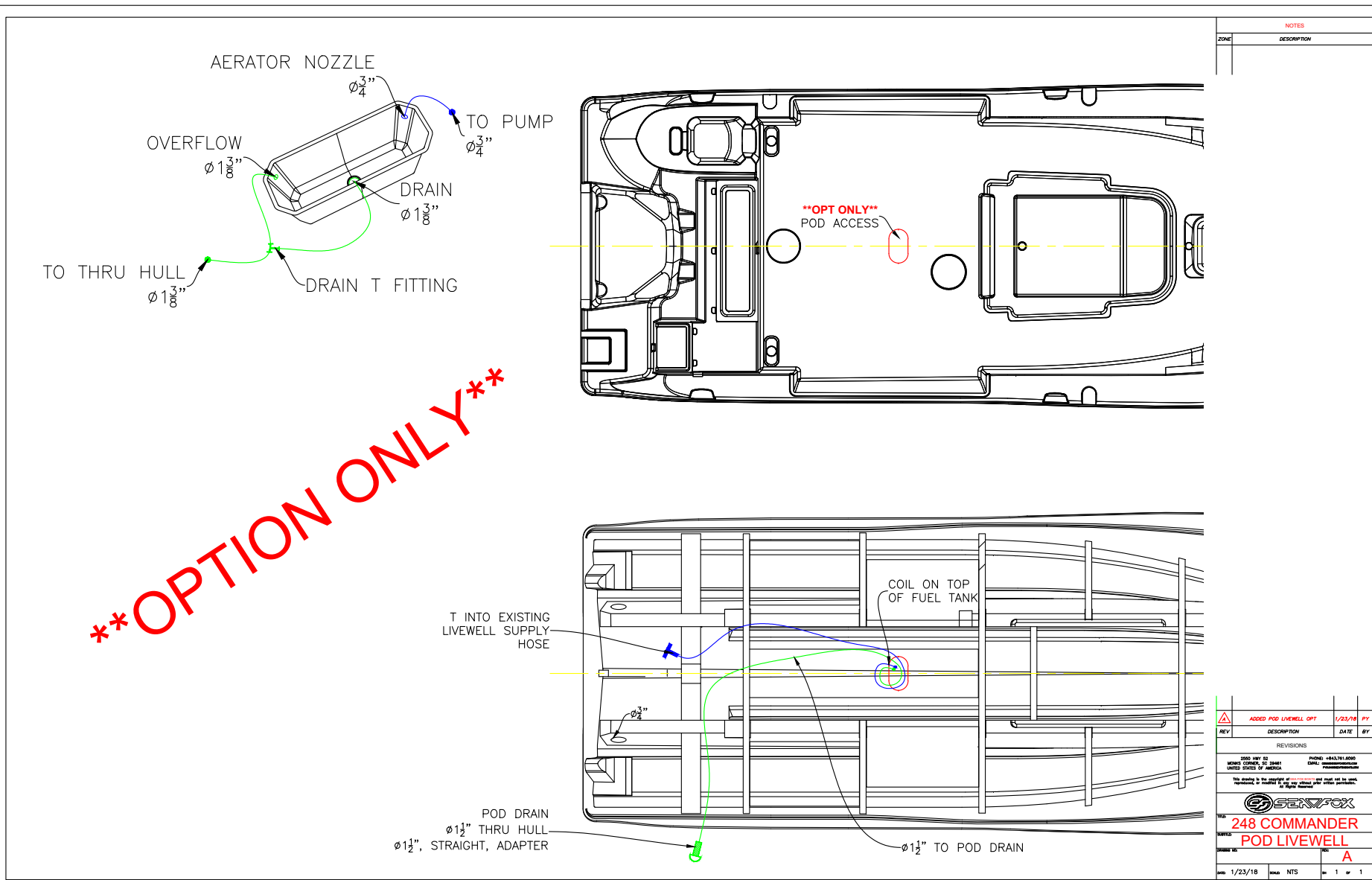
REV	DESCRIPTION	DATE	BY
REVISIONS			
2000 HWY 92 MORRIS CORP., P.O. BOX 1 UNITED STATES OF AMERICA		PHONE: +845.761.6800 EMAIL: commander@seafox.com	
This drawing is the property of SeaFox and shall not be used, reproduced or modified in any way without prior written permission. All Rights Reserved.			
			
248 COMMANDER LIVEWELL			
DRAWN BY: INTS		#	
DATE: 06/15/2017		IN 1 OF 1	



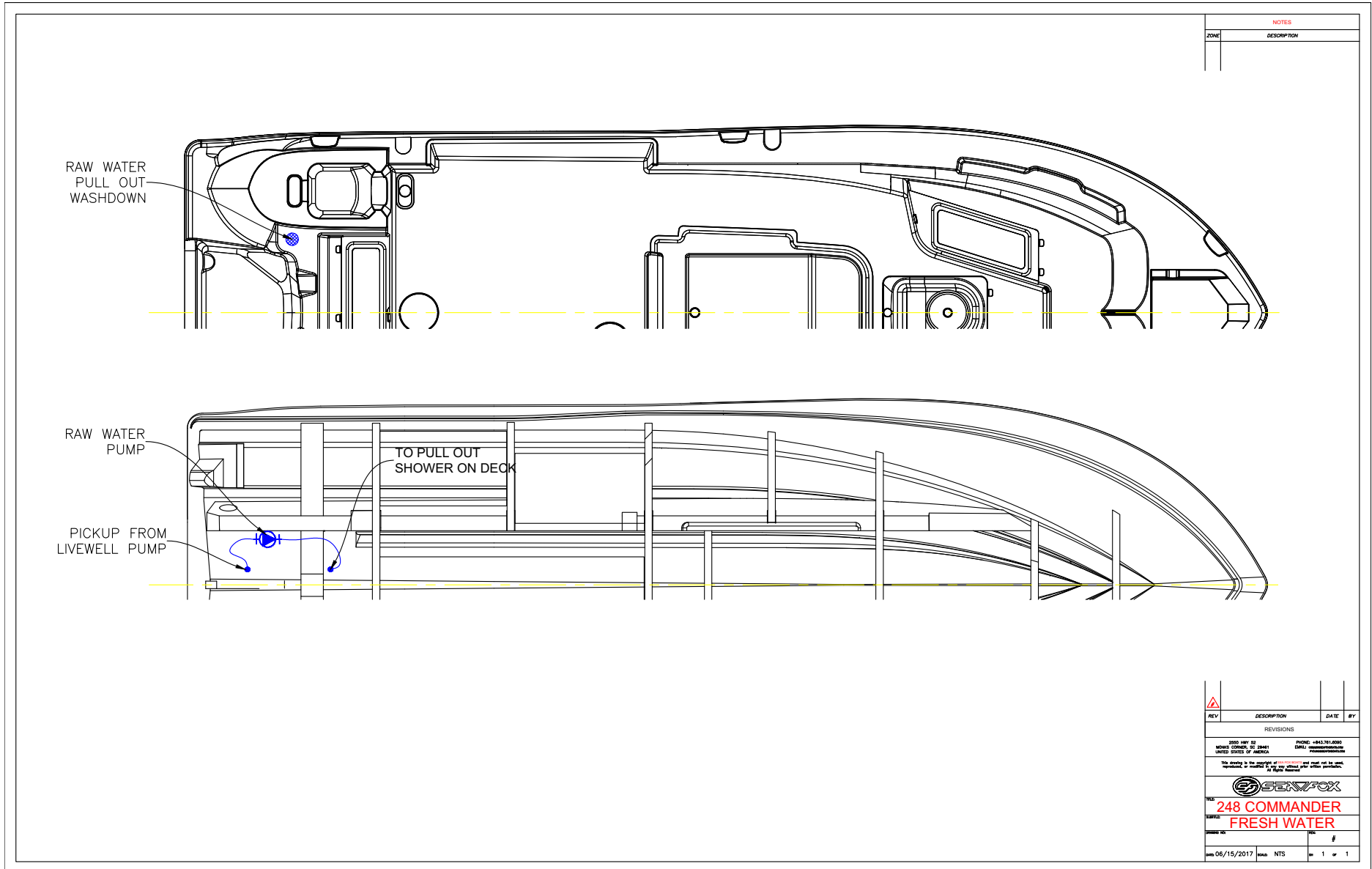
			
REV	DESCRIPTION	DATE	
REVISIONS			
2550 HWY 52 MOUNTAIN VIEW, SC 29591 UNITED STATES OF AMERICA		PHONE: +843.711.6390 EMAIL: info@senzfox.com www.senzfox.com	
<p>This drawing is the intellectual property of www.senzfox.com and must not be used, reproduced, or modified in any way without prior written permission. All Rights Reserved.</p>			
			
<p>246 COMMANDER MY1 HEAD W/ OB DISCHARG</p>			
DRAWING NO.		REV	
06/15/2017		NTS	
DATE	BY	IN	#
06/15/2017	NTS	1	1

246 COMMANDER_MY18
ELEC HEAD W/ OB DISCHARGE

COMMANDER POD LIVEWELL SYSTEM

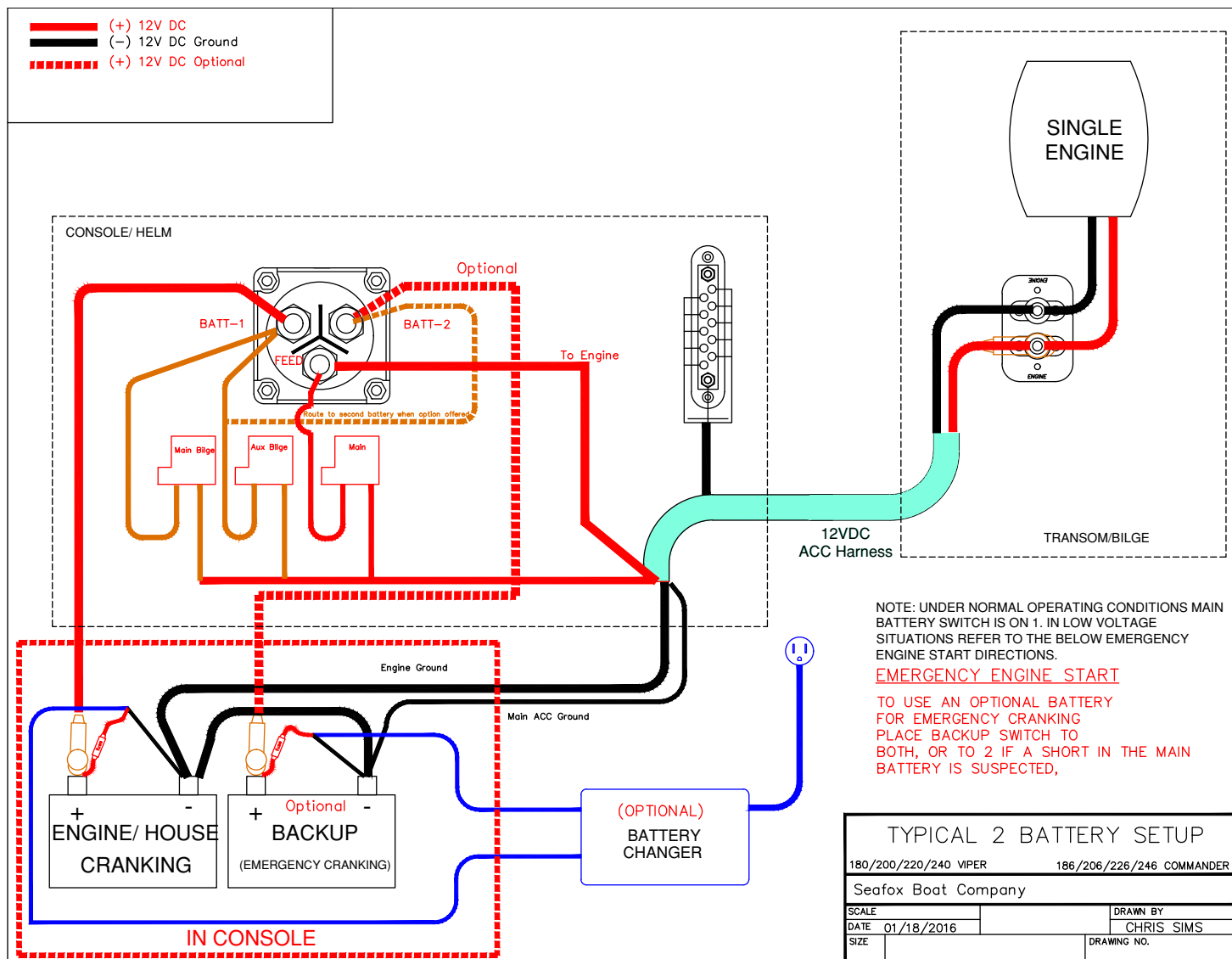


COMMANDER FRESH WATER SYSTEM

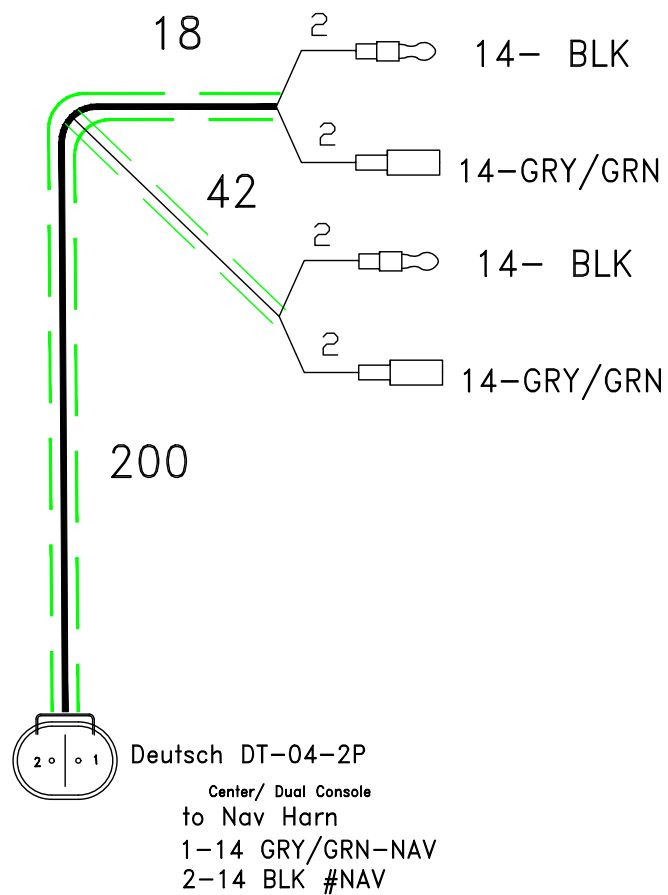


ELECTRICAL SCHEMATICS

TYPICAL 2-BATTERY SETUP IN CONSOLE



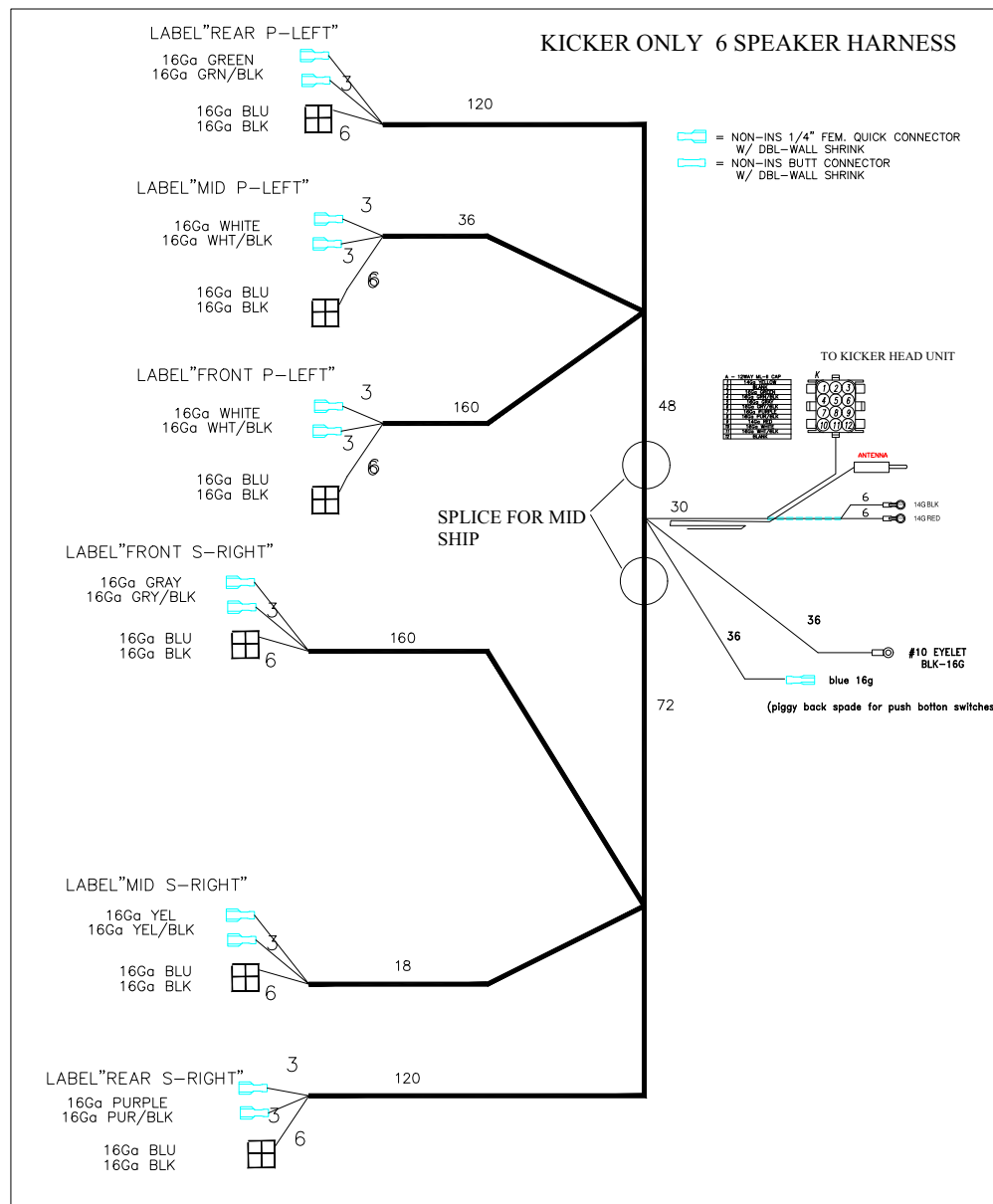
HARNESS NAV SHORT



Harness, NAV-SHORT- NEW#

est-7-18-16

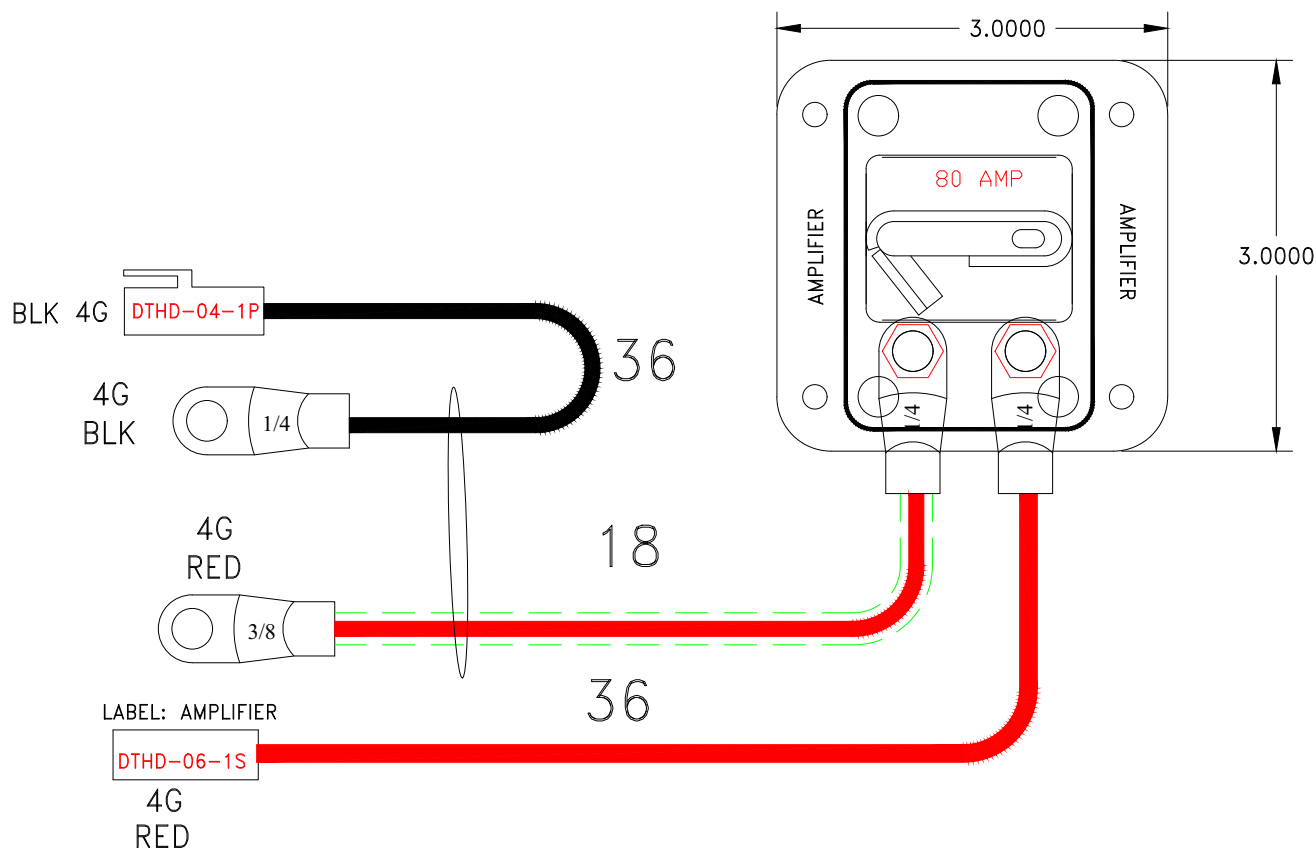
HARNESS KICKER ONLY 6-SPEAKER





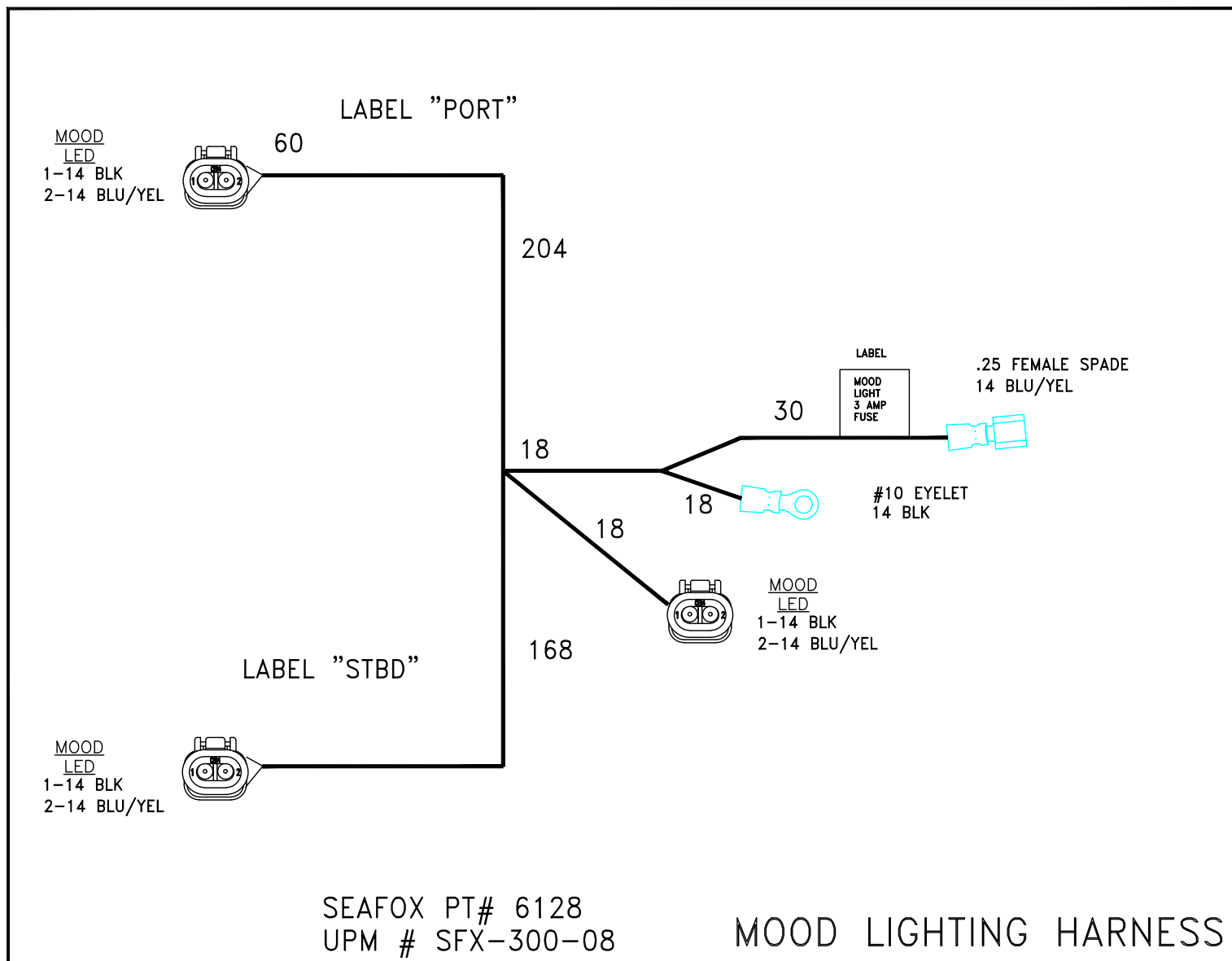
JL AUDIO BREAKER KIT SHORT

JL AUDIO BREAKER KIT SHORT 800/8





HARNESS MOOD LIGHT W/DEUTSCH (P/N 6128) – OPTIONAL

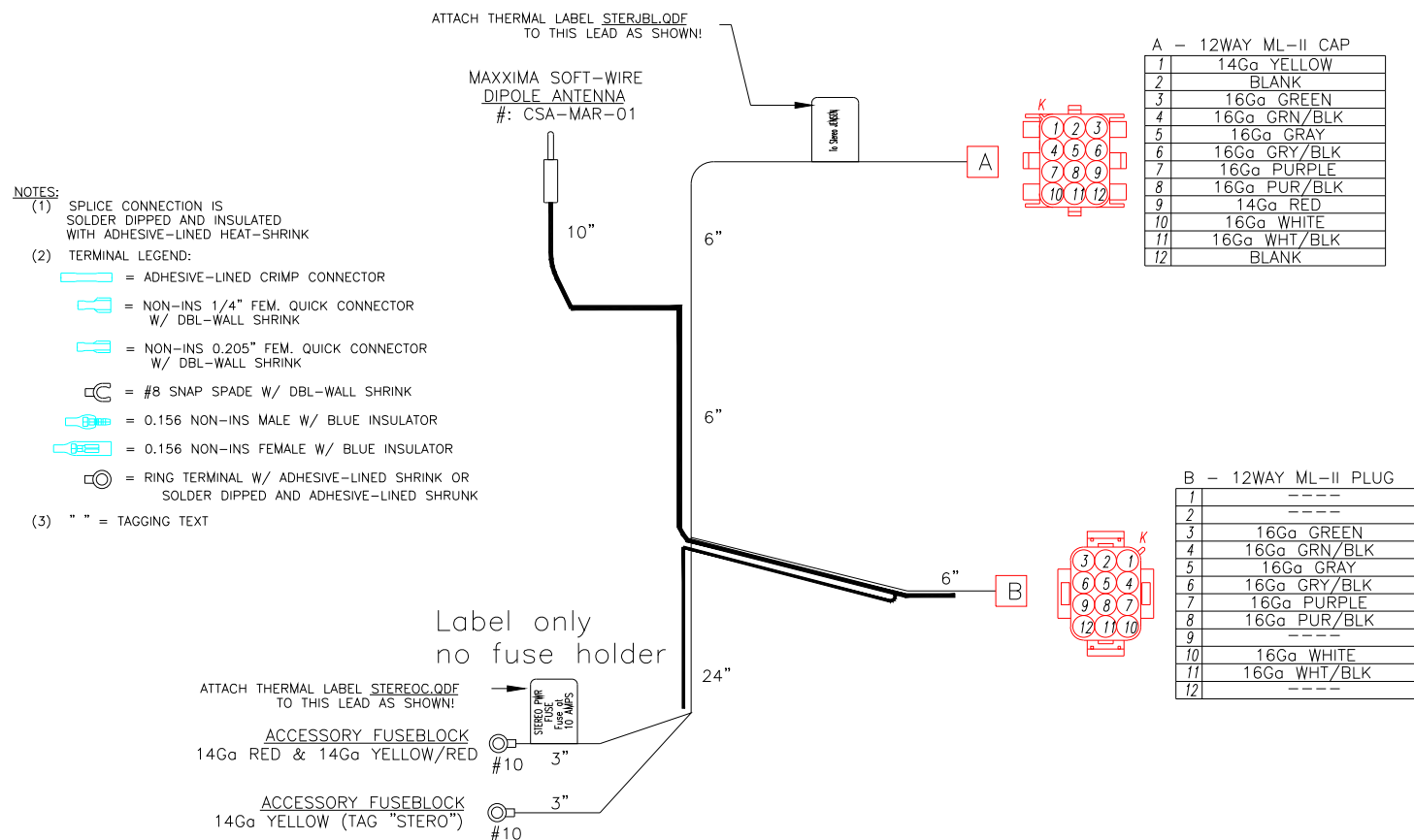




HARNESS STEREO INFINITY CON (P/N 6129) – OPTIONAL

CUSTOMER SEAFOX BOAT CO.
PART # 6129 UPM# SFX-300-09
FILENAME _____

W/O # _____
DUE DATE _____
MODEL ALL MODELS
DESCRIPTION HARNESS STEREO INFINITY/JENSEN



HARNESS STEREO INFINITY DECK (P/N 6130) – OPTIONAL

CUSTOMER SEAFOX BOAT CO.

PART # 6130 UPM# SFX-300-04

FILENAME _____


W/O # _____

DUE DATE _____

MODEL ALL MODELS

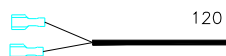
DESCRIPTION HARNESS DECK INFINTY STEREO

NOTES:

 = NON-INS 1/4" FEM. QUICK CONNECTOR
W/ DBL-WALL SHRINK

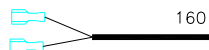
LABEL "REAR LEFT"

16Ga GREEN
16Ga GRN/BLK



LABEL "FRONT LEFT"

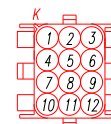
16Ga WHITE
16Ga WHT/BLK



48

24

B

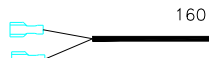


B - 12WAY ML-II PLUG

1	----
2	----
3	16Ga GREEN
4	16Ga GRN/BLK
5	16Ga GRAY
6	16Ga GRY/BLK
7	16Ga PURPLE
8	16Ga PUR/BLK
9	----
10	16Ga WHITE
11	16Ga WHT/BLK
12	----

LABEL "FRONT RIGHT"

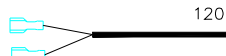
16Ga GRAY
16Ga GRY/BLK



72

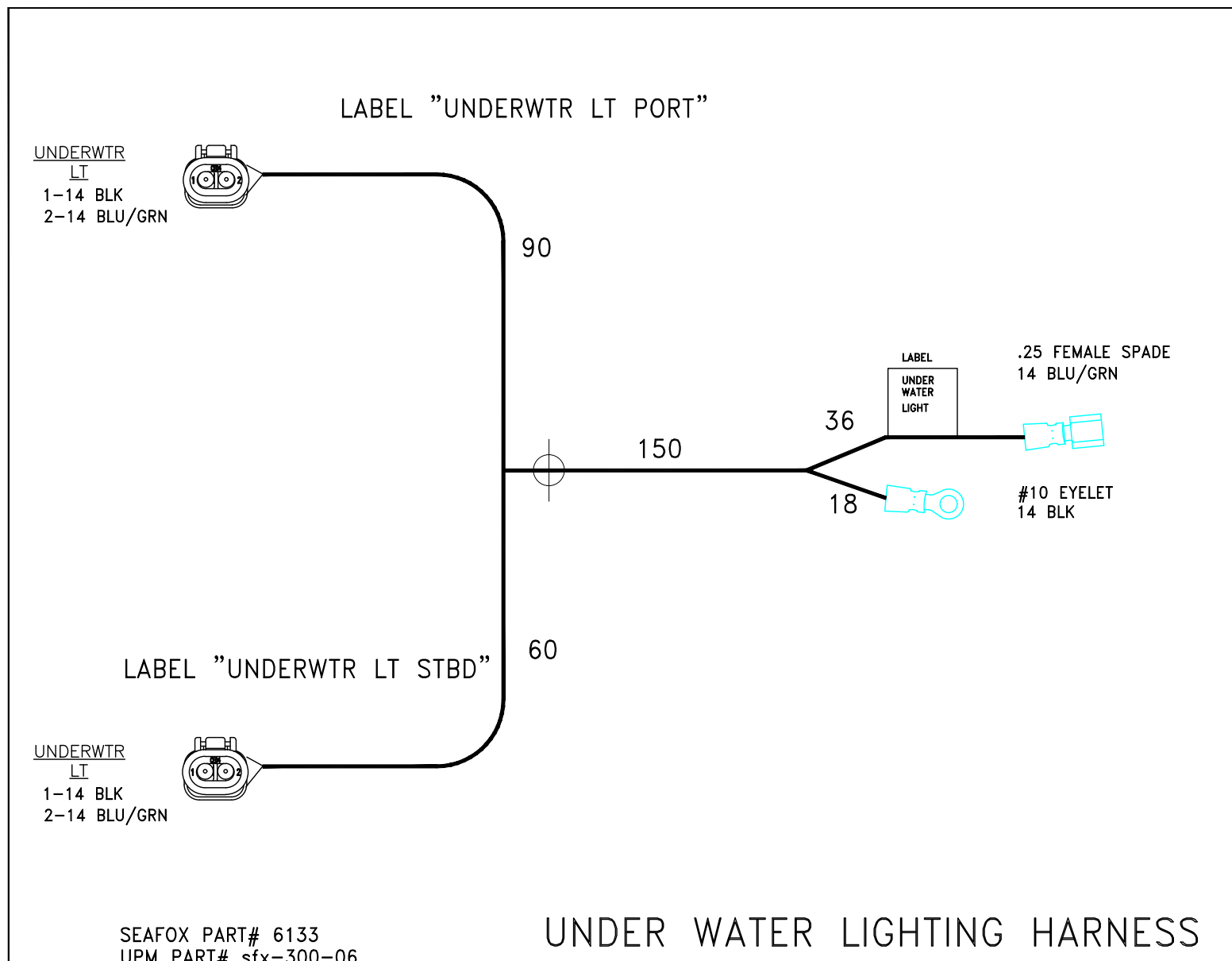
LABEL "REAR RIGHT"

16Ga PURPLE
16Ga PUR/BLK

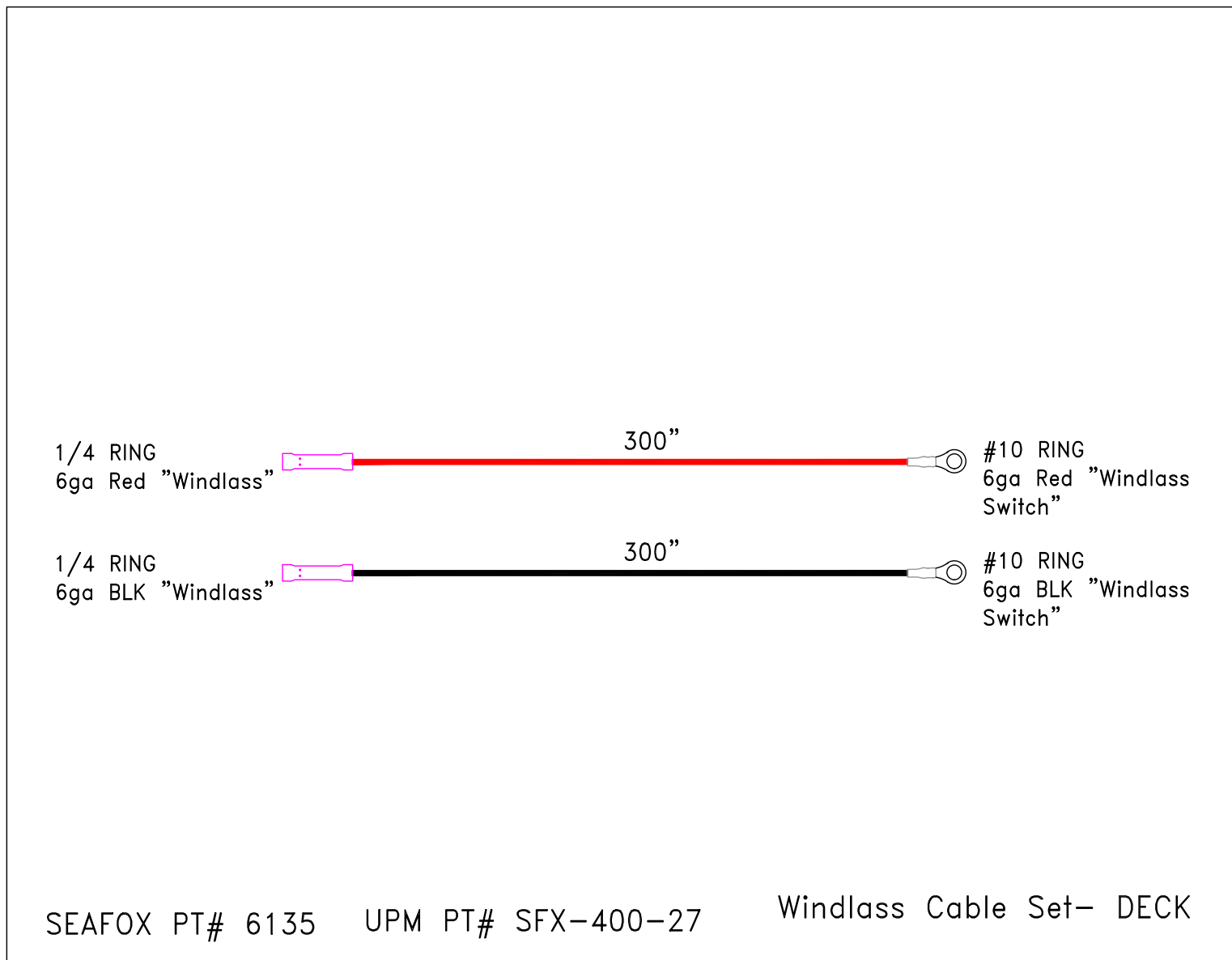




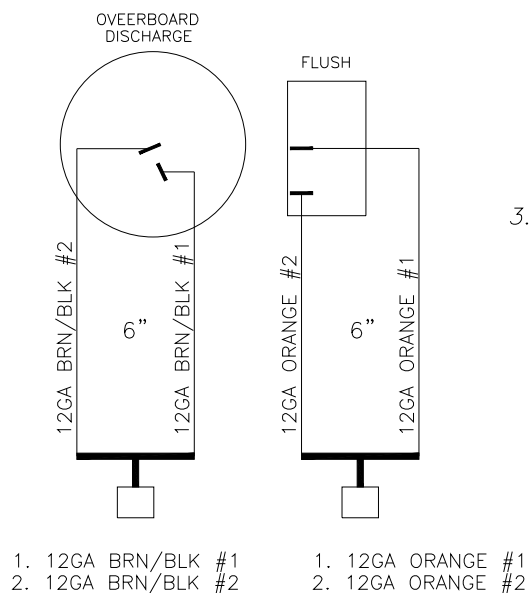
HARNESS UNDERWATER LIGHT W/DEUTSCH (P/N 6133) – OPTIONAL



HARNESS WINDLASS DECK (P/N 6135) – OPTIONAL



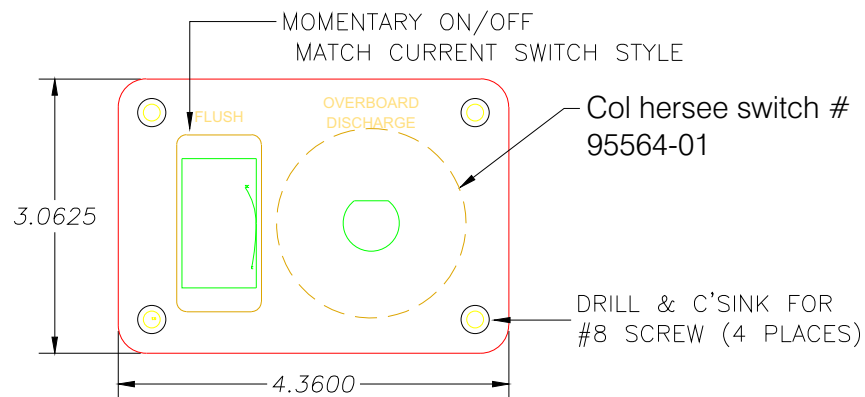
HEAD PANEL SWITCH ORB (P/N 6136) – OPTIONAL



MATCH CONNECTORS TO NEW
256CC/WA HARNESS

NOTES:

- (1) PAINT TEXTURED BLACK
- (2) SCREEN WHITE






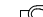



ASSEMBLY NOTE:
Inject every push-on connector
with dielectric grease prior to
attachment to switch.

SEAFOX PT# 6136

Quantity	648-ALUMINUM - 6061-T6 ALUMINUM	
	Material	
Work Order Number	ELECTRIC FLUSH-DISCHARGE SWITCH PANEL - WHITE- BLACK LETTERS	
	File Number SFX300-14	
Due Date	SEAFOX BOAT COMPANY	
	07-28-15	
	Faceplate Number	Panel Number

HARNESS STEREO KICKER CON 2016 (P/N 6851) – OPTIONAL

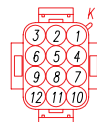
NOTES:

- (1) SPLICE CONNECTION IS
SOLDER DIPPED AND INSULATED
WITH ADHESIVE-LINED HEAT-SHRINK
- (2) TERMINAL LEGEND:
-  = ADHESIVE-LINED CRIMP CONNECTOR
 -  = NON-INS 1/4" FEM. QUICK CONNECTOR
W/ DBL-WALL SHRINK
 -  = NON-INS 0.205" FEM. QUICK CONNECTOR
W/ DBL-WALL SHRINK
 -  = #8 SNAP SPADE W/ DBL-WALL SHRINK
 -  = 0.156 NON-INS MALE W/ BLUE INSULATOR
 -  = 0.156 NON-INS FEMALE W/ BLUE INSULATOR
 -  = RING TERMINAL W/ ADHESIVE-LINED SHRINK OR
SOLDER DIPPED AND ADHESIVE-LINED SHRUNK
- (3) " " = TAGGING TEXT

B - 12WAY ML-II PLUG

1	----
2	----
3	16Ga GREEN
4	16Ga GRN/BLK
5	16Ga GRAY
6	16Ga GRY/BLK
7	16Ga PURPLE
8	16Ga PUR/BLK
9	----
10	16Ga WHITE
11	16Ga WHT/BLK
12	----

TO- ULTIMA TOP HARNESS



ATTACH THERMAL LABEL STEREOC QDF
TO THIS LEAD AS SHOWN!

ACCESSORY FUSEBLOCK
14Ga RED #10 3"

ACCESSORY FUSEBLOCK
14Ga YELLOW (TAG "STERO") #10 3"

ATTACH THERMAL LABEL STEREOB QDF
TO THIS LEAD AS SHOWN!

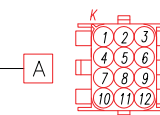
MAXXIMA SOFT-WIRE
DIPOLE ANTENNA
#: CSA-MAR-01

10"

6"

6"

24"



A - 12WAY ML-II CAP

1	14Ga RED
2	16Ga WHT/BLK
3	16Ga WHITE
4	BLANK
5	16Ga GRY/BLK
6	16Ga GRAY
7	BLANK
8	16Ga GRN/BLK
9	16Ga GREEN
10	14Ga BLACK
11	16Ga PUR/BLK
12	16Ga PURPLE

TO- DECK HARNESS

B - 12WAY ML-II PLUG

1	----
2	----
3	16Ga GREEN
4	16Ga GRN/BLK
5	16Ga GRAY
6	16Ga GRY/BLK
7	16Ga PURPLE
8	16Ga PUR/BLK
9	----
10	16Ga WHITE
11	16Ga WHT/BLK
12	----



6891 N.W. 73rd COURT
Miami, FL 33166
Ph. 305-888-7709
Fax 305-888-7285

SEA FOX SFX-818-016

TITLE

KICKER 8-SPEAKER
STEREO ADAPTER HARNESS

SIZE

CAGE CODE DWG NO

REV

SCALE

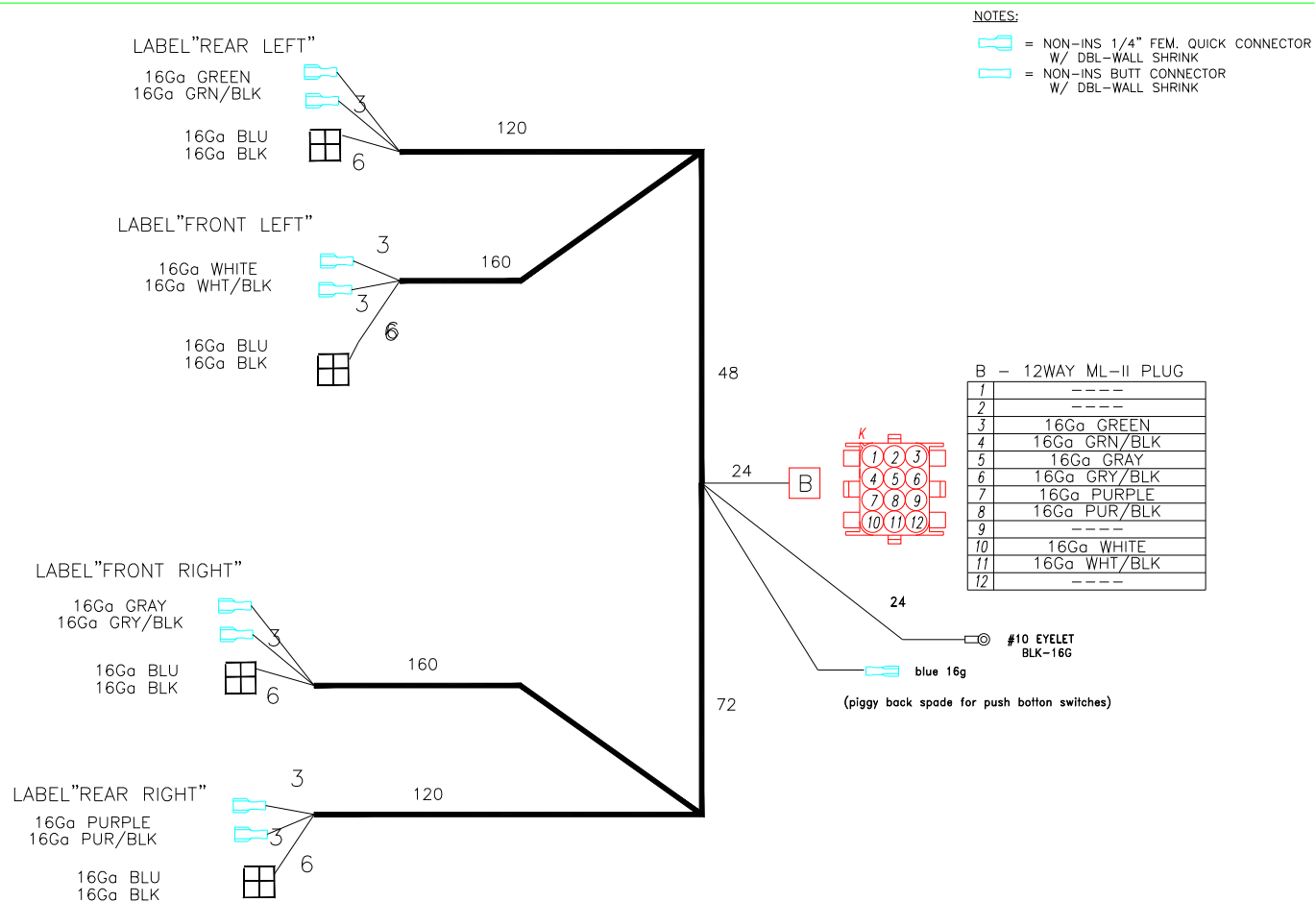
SHEET

SEAFX0X PT# 6851

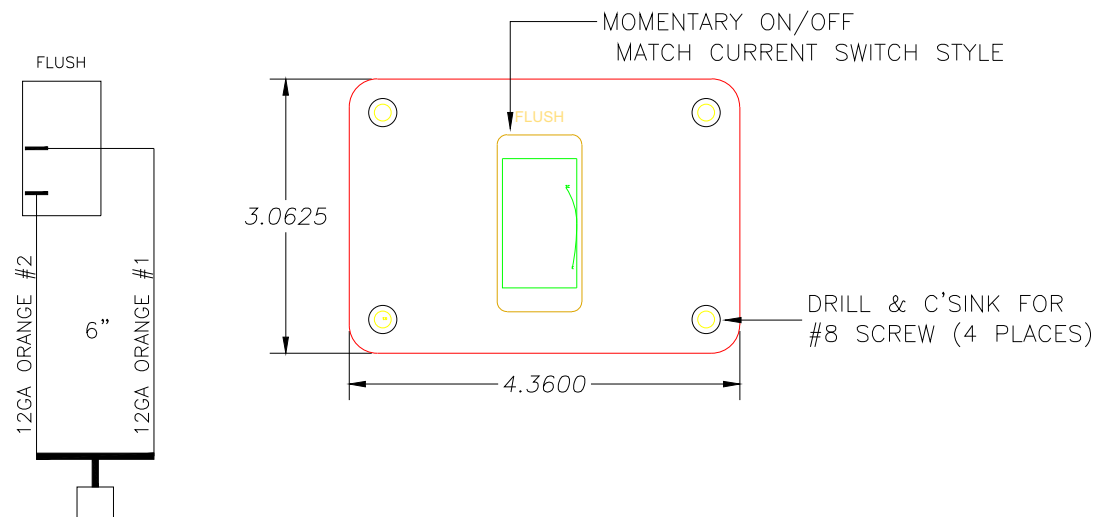


HARNESS STEREO KICKER DECK 2016 (P/N 6852) – OPTIONAL

CUSTOMER SEAFOX BOAT CO. W/O # _____
PART # SF# 6852-UPM# SFX-489-13 DUE DATE _____
MODEL ALL CENTER CONSOLES
FILENAME _____ DESCRIPTION HARNESS DECK SPEAKER W/LED



HEAD PANEL SWITCH ORB (P/N 6870) – OPTIONAL



1. 12GA ORANGE #1
2. 12GA ORANGE #2

MATCH CONNECTORS TO NEW
256CC/WA HARNESS

NOTES:

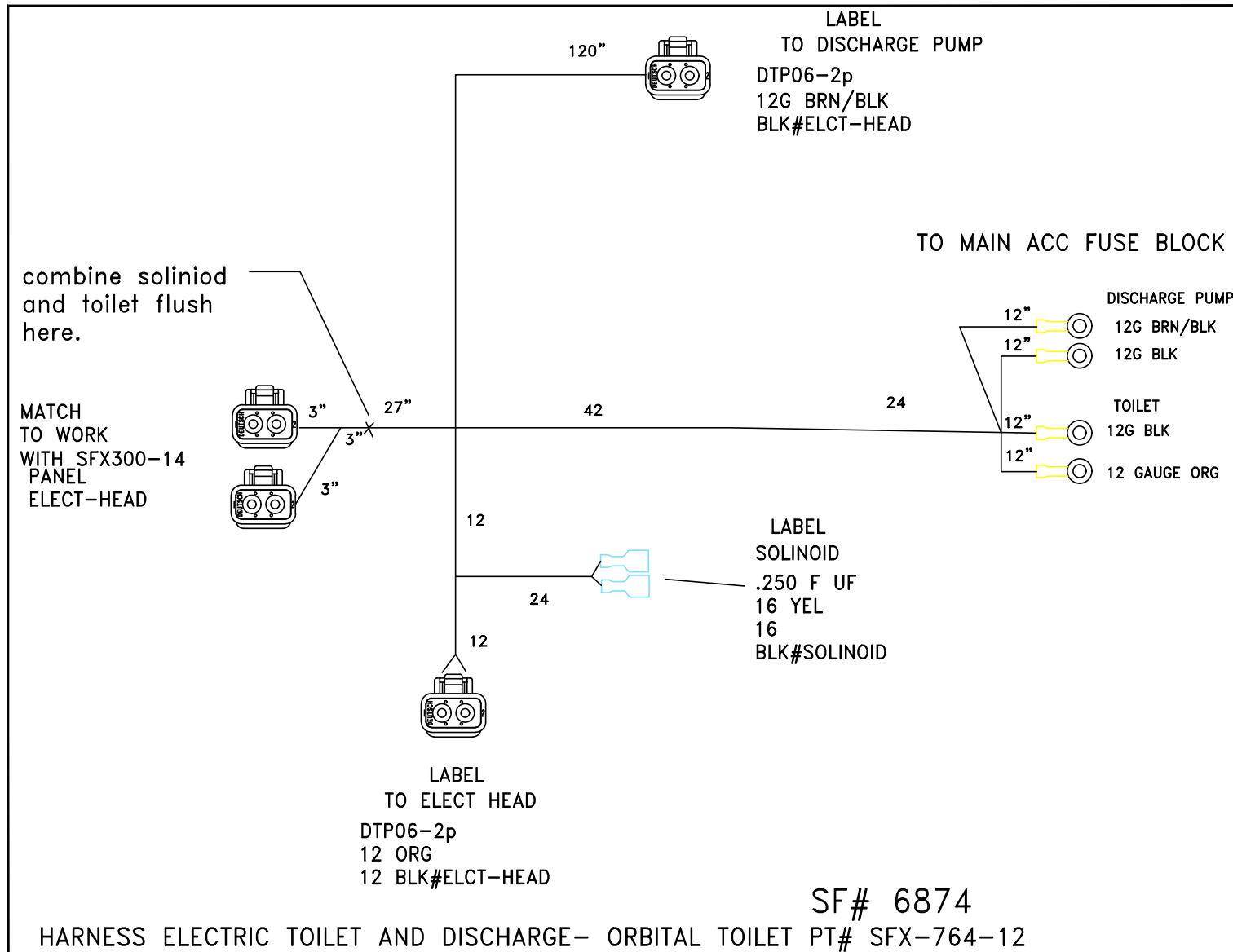
- (1) PAINT TEXTURED BLACK
- (2) SCREEN WHITE

ASSEMBLY NOTE:
Inject every push-on connector
with dielectric grease prior to
attachment to switch.

SF# 6870 UPM# SFX-028-11

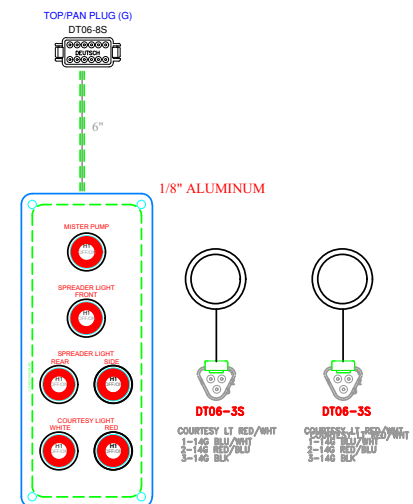
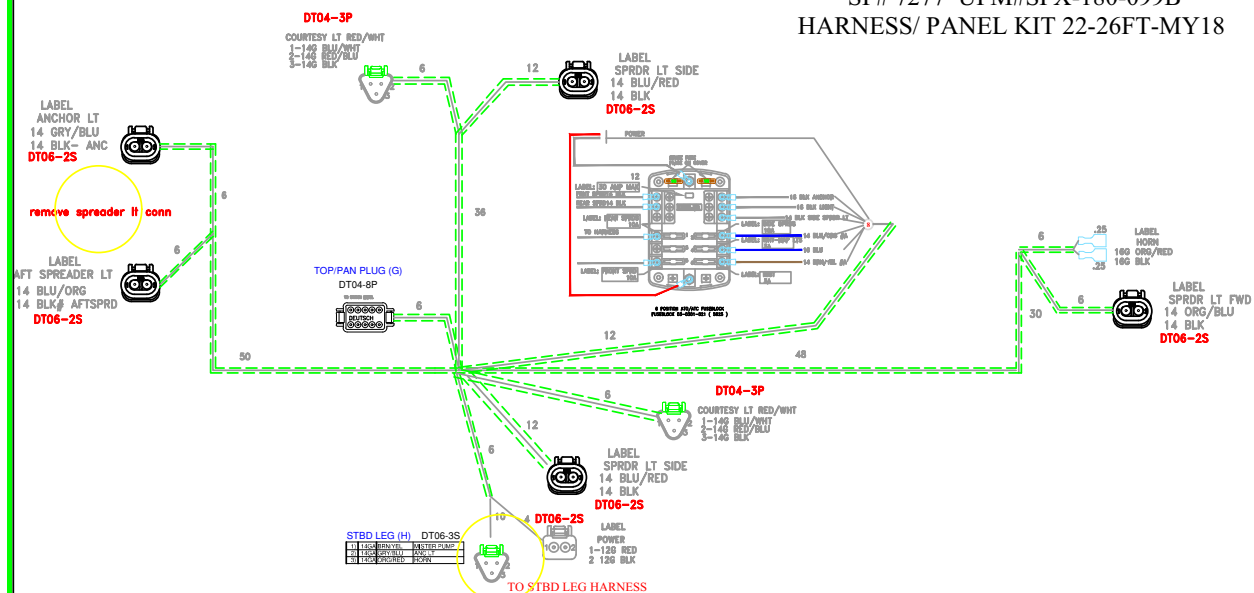
Quantity	648-ALUMINUM - 6061-T6 ALUMINUM		
	Material		
Work Order Number	ELECTRIC FLUSH SWITCH PANEL - BLACK- WHITE LETTERS		
	File Number		
	SEAFOX BOAT COMPANY		
Due Date	07-28-15		
	Faceplate Number	Panel Number	

HEAD HARNESS ORB (P/N 6874) – OPTIONAL



U PANEL SWITCH/HARNESS ULTIMA (P/N 7277) – OPTIONAL

SF# 7277 UPM#SFX-180-099B
HARNESS/ PANEL KIT 22-26FT-MY18



REV A : CORRECT CONNECTOR ON LEG HARNESS TO 3 POS FROM 4 POS
REV B : REMOVE LEAD FOR SPREADER LIGHT AT AFT- ONLY ONE LIGHT-01-09-18



This Page Intentionally Left Blank

This Page Intentionally Left Blank



This Page Intentionally Left Blank

This Page Intentionally Left Blank



This Page Intentionally Left Blank



Sea Fox Boat Company, Inc.
2550 Highway 52
Moncks Corner, SC 29461-5024

Telephone: 843-761-6090
www.seafoxboats.com

Ken Cook Co.
Printed in U.S.A.
Rev 0719