



## Owner's Manual Supplement

[www.SeaFoxBoats.com](http://www.SeaFoxBoats.com)

## **SEA FOX BOAT'S DISCLAIMER**

The following Owner's Manual is provided for information and educational purposes only and is not intended to offer or provide legal advice or create a contractual relationship between Sea Fox Boat Company and the owner of any Sea Fox brand vessel. Please beware that as a vessel owner you have non-delegable responsibilities regarding the safety, maintenance, fitness, and operation of your vessel and the extent of such responsibilities is ultimately determined by Federal law and regulations, the general maritime law of the United States, the laws and regulations of the states and territories of the United States, or the laws and regulations of the country where you operate your vessel. To fully understand your responsibilities as a vessel owner, and before operating or letting any third-party operate your vessel, we recommend that you consult the services of a qualified lawyer in admiralty and maritime law.

## TABLE OF CONTENTS

Introduction .....	3	Typical 2-Battery Setup with Transom .....	12
Specifications .....	3	DC Accessory Harness (P/N 6446) .....	13
Designated Occupant Seating .....	4	Harness Deck/Liner Kick/Infin (P/N 6898) .....	14
Plumbing Schematics .....	5	Harness Dual Console Ultima Top .....	15
Traveler Bilge System .....	5	Trimtabs Electric Switch Standard (P/N 2895) – Optional .....	16
Traveler Drains .....	6	Harness Mood Light w/ Deutsch (P/N 6128) – Optional .....	17
Traveler Electric Head .....	7	Harness Stereo Infinity Con (P/N 6129) – Optional .....	18
Traveler Fresh Water System .....	8	Harness Underwater Light w/ Deutsch (P/N 6133) – Optional ..	19
Traveler Fuel System .....	9	Harness Windlass Hull Aft Battery (P/N 6134) – Optional .....	20
Traveler Livewell System .....	10	Harness Windlass Deck Option (P/N 6135) – Optional .....	21
Traveler Raw Water System .....	11	Head Panel Switch ORB (P/N 6870) – Optional .....	22
Electrical Schematics .....	12	Head Harness ORB 226DC (P/N 6906) – Optional .....	23



This Page Intentionally Left Blank

## INTRODUCTION

**Congratulations and Welcome Aboard!** With so many boat brands to choose from, we want to congratulate you on your decision to choose Sea Fox Boats. For more than 24 years, Sea Fox offers the finest hand-crafted saltwater boats carefully balanced with the build-quality, features, styling and performance for the fairest price. Our passion for boating is evident in every model we make and we appreciate that you've noticed the Sea Fox difference.

We share your love for the moments spent on the water with friends and family, which is why every Sea Fox boat offers a unique blend of fishing/family options, technologies and innovative features. Your choice of a Sea Fox affirms that you have performed your research and compared the value of your model with the competition.

Whether you are new to the boating lifestyle or an old salt, we ask that **you and all other operators** read the owner's manual, this supplement, and all other literature provided with the boat **before** operating the boat or any equipment. We also recommend that all operators enroll in a boating safety course available online - see References and Contact Information in this section for education resources online.

This supplement contains model-specific information not included with the owner's manual. This manual is not intended to be a replacement for specific product literature provided by engine, accessory or other major equipment manufacturers, but rather to supplement that information.

Because of our philosophy of continuous product improvement, this manual serves as a general guide only, so the specifications and illustrations used may not match the equipment on your boat and are intended only as general reference views.

*We welcome you to the Sea Fox family and wish you many years of boating enjoyment!*

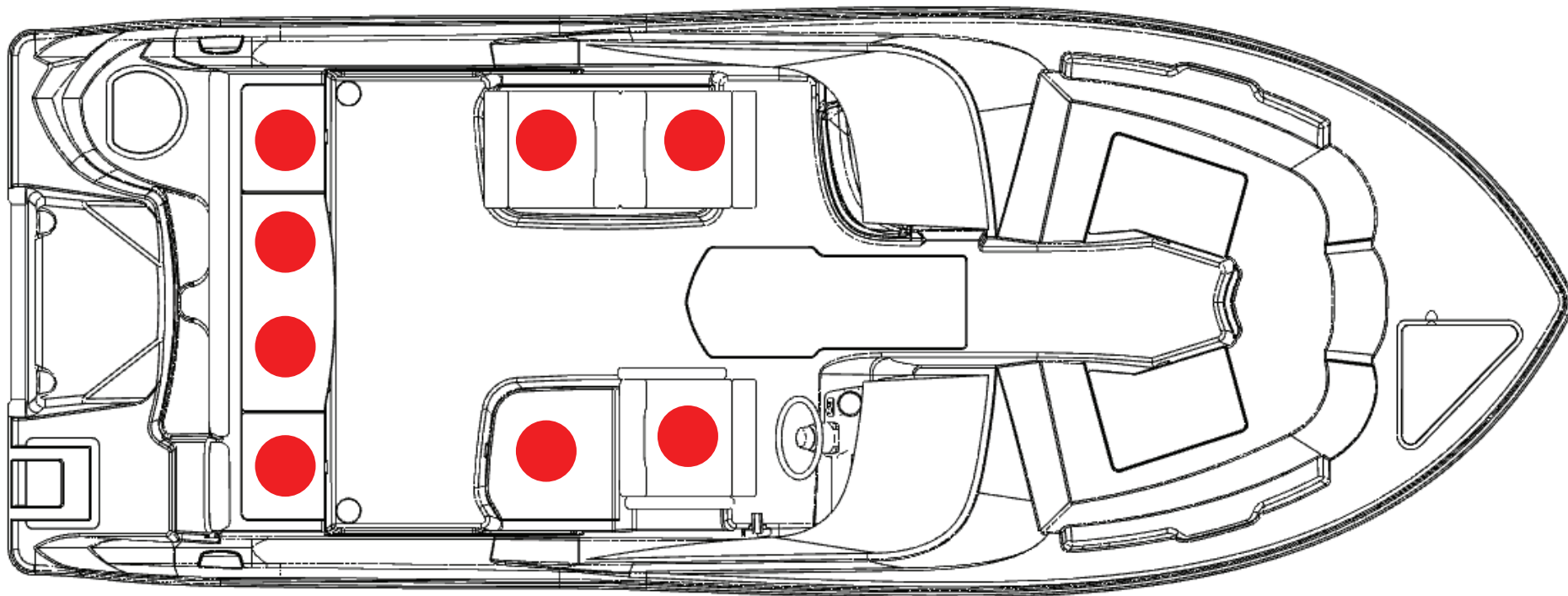
## SPECIFICATIONS

Max. Weight Capacity	2200 lbs (998 kg)
Persons	8
Persons Weight	1200 lbs (544 kg)
Max. HP	250 hp (186 kw)
L.O.A.	22' 4" (6.81 m)
Beam	8' 6" (2.59 m)
Draft	16 in. (0.41 m)
Height, Keel to Top (Light Folded)	115 in. (2.92 m)
Bridge Clearance Hard Top	99 in. (2.51 m)
Max. Weight Boat (w/ Fluids, Largest HP)	4489 lbs (2036 kg)
Fuel Tank Capacity	106 gal (401 L)
Freshwater Tank Capacity	12 gal (45 L)
Holding Tank Capacity	6 gal (23 L)



## DESIGNATED OCCUPANT SEATING

Be sure all passengers are properly seated in designated seating positions and not riding on the bow, bow pulpit, deck, gunwale or rear sun deck while underway. Passengers must use hand-holds and use caution when riding in the bow. Move to the aft passenger seats during rough water operation or if visibility is restricted.

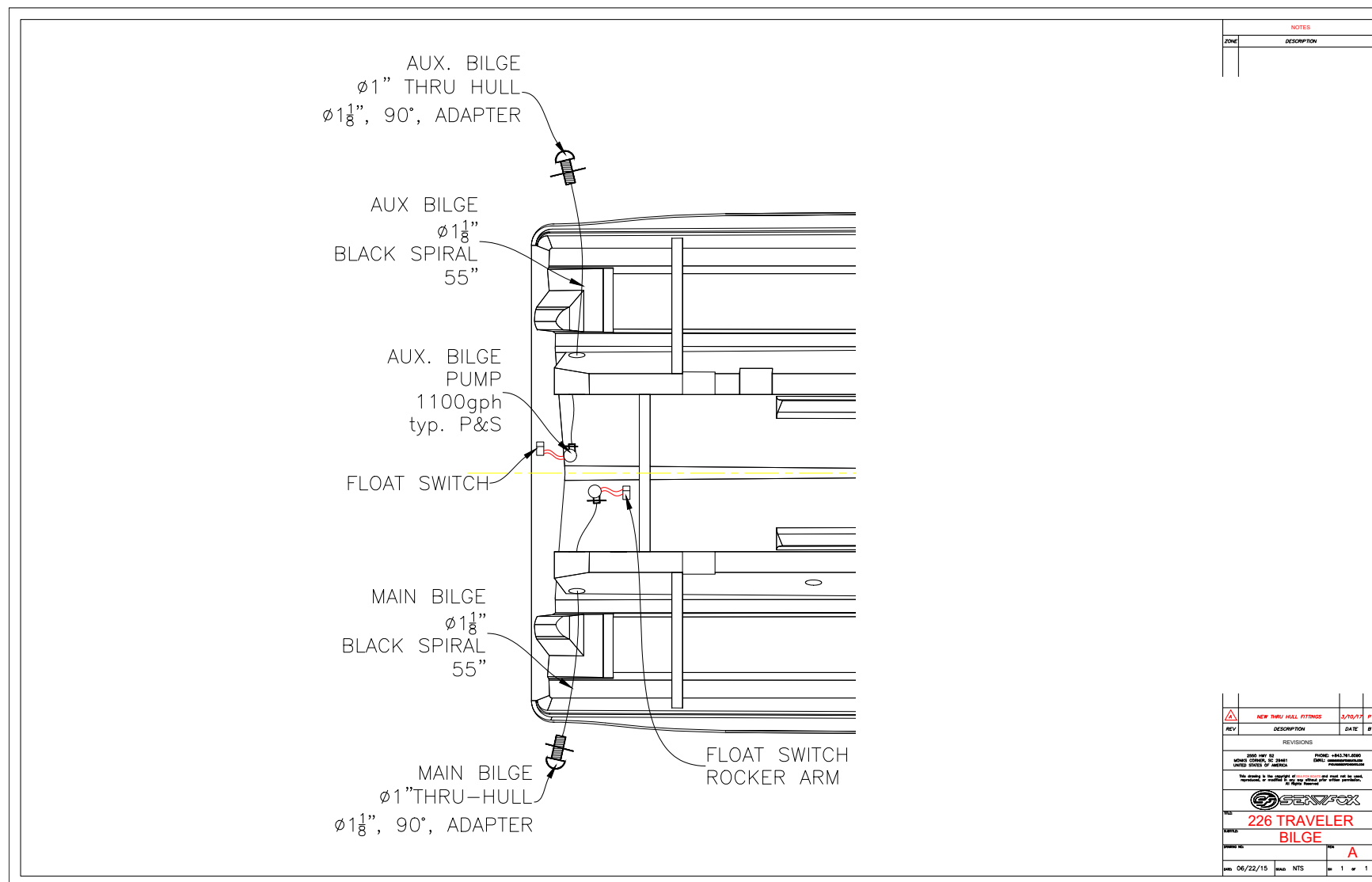


● = Seat position

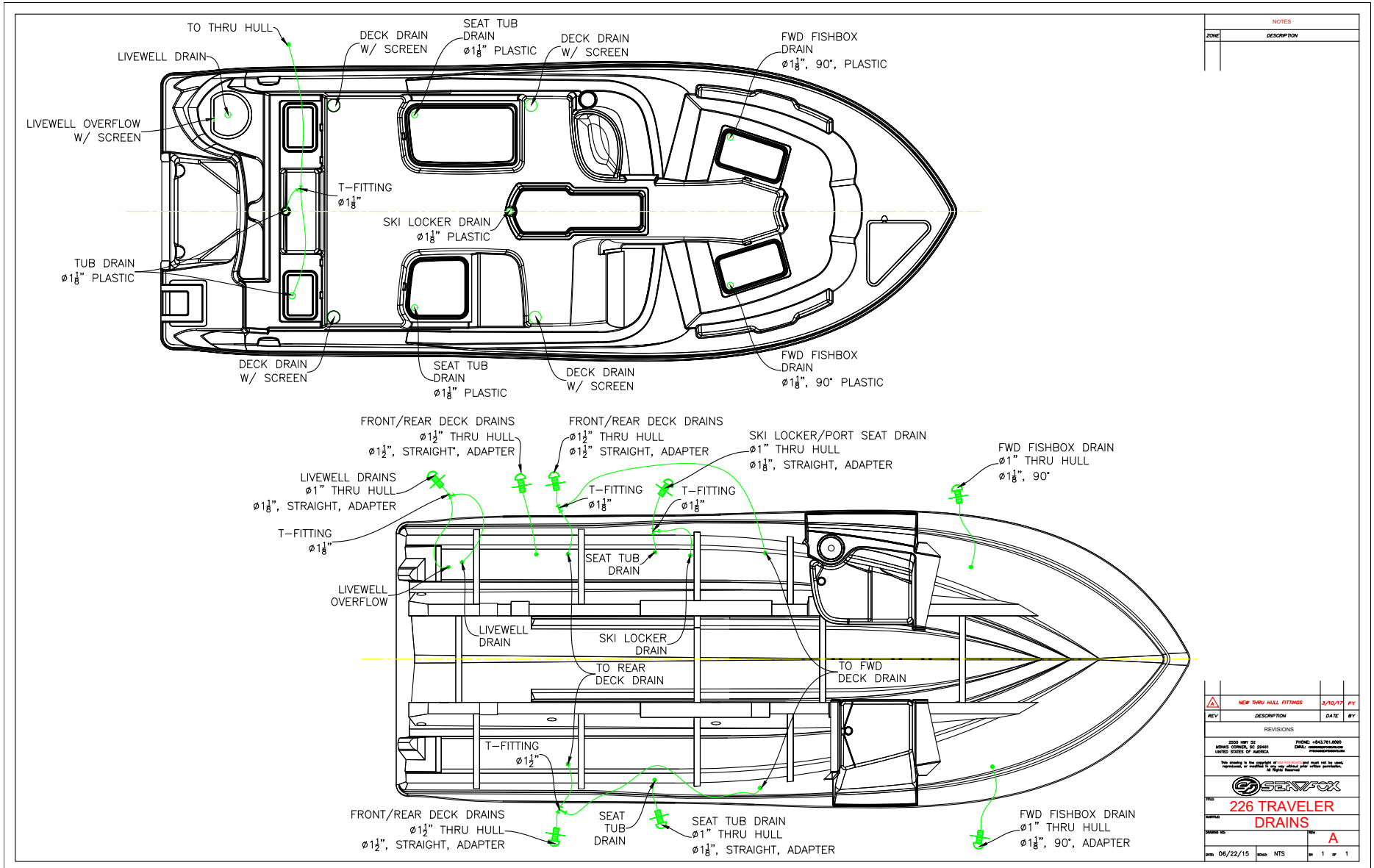
SFOX-0022

## PLUMBING SCHEMATICS

## TRAVELER BILGE SYSTEM

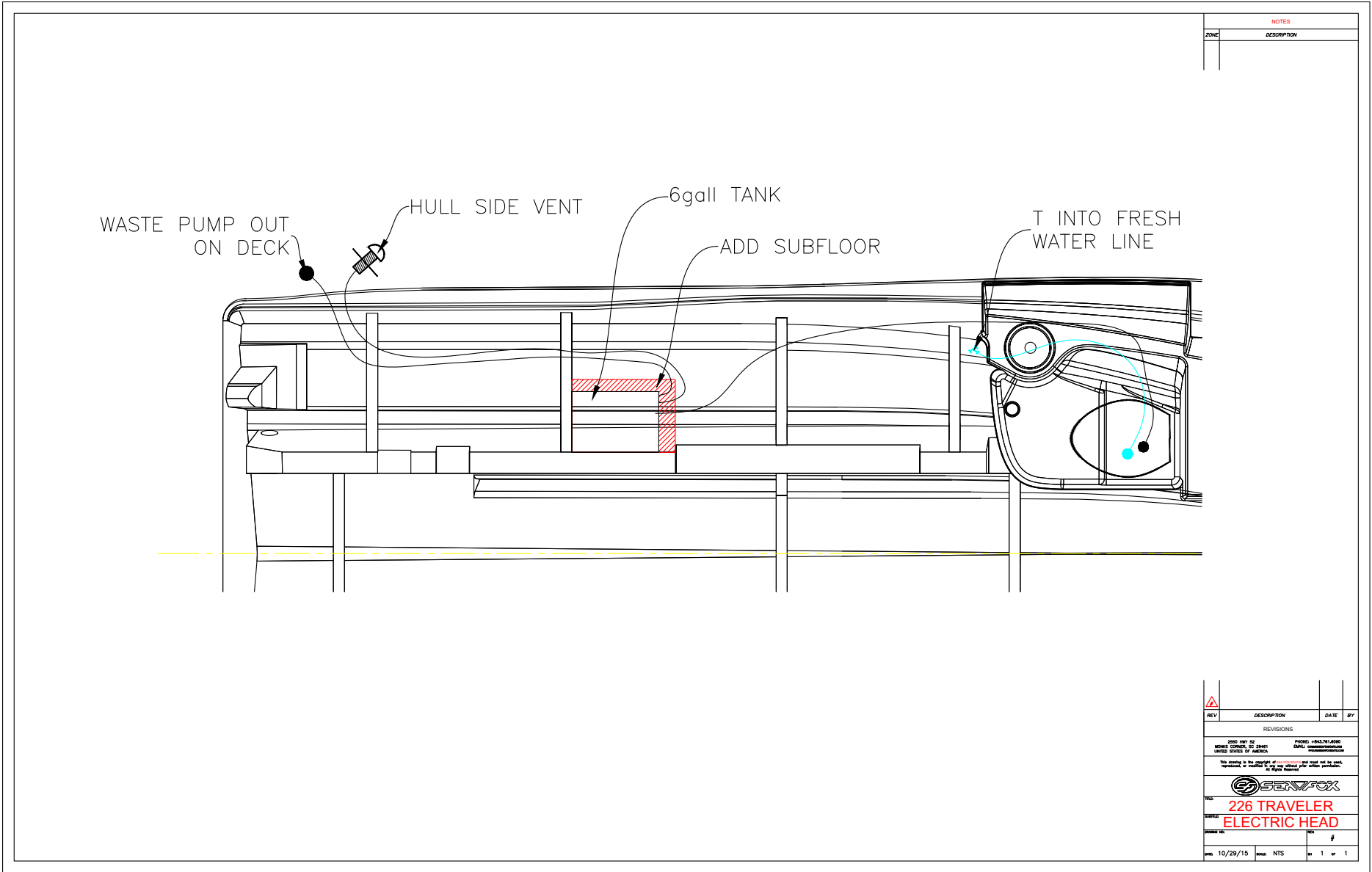


## TRAVELER DRAINS



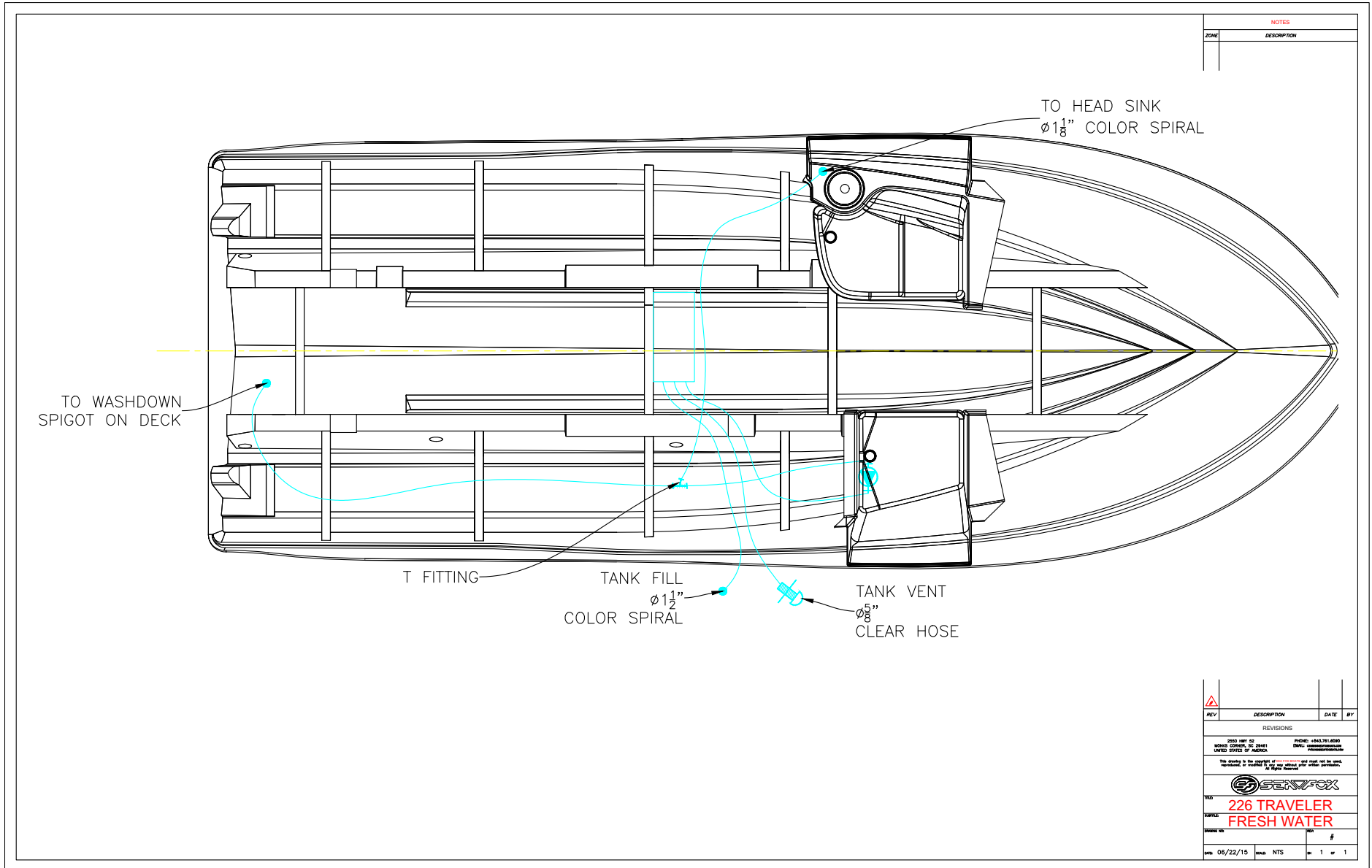


**TRAVELER ELECTRIC HEAD**

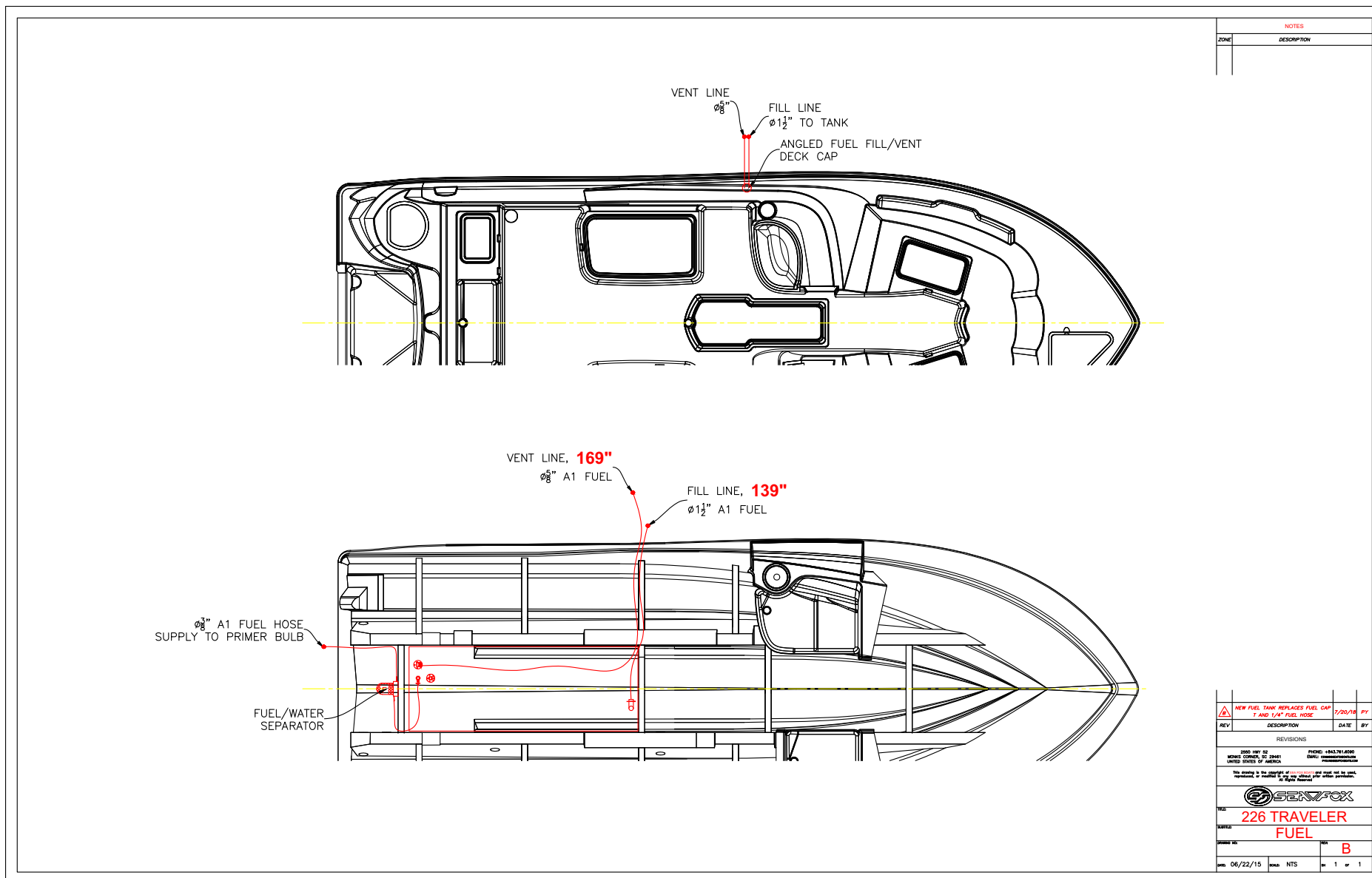




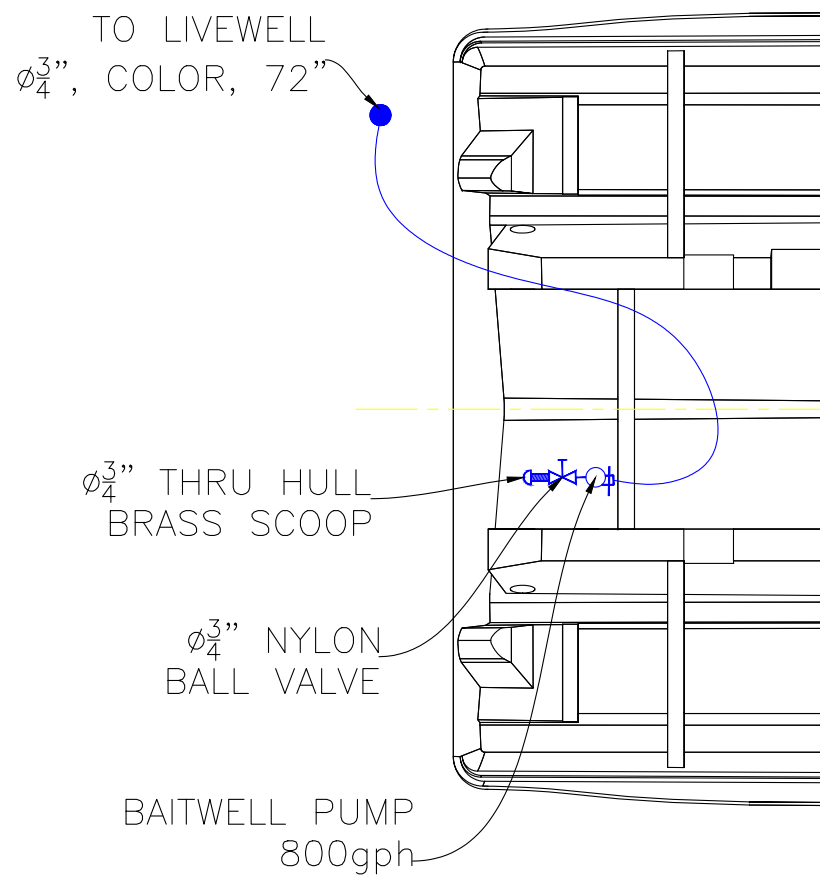
## TRAVELER FRESH WATER SYSTEM



## TRAVELER FUEL SYSTEM



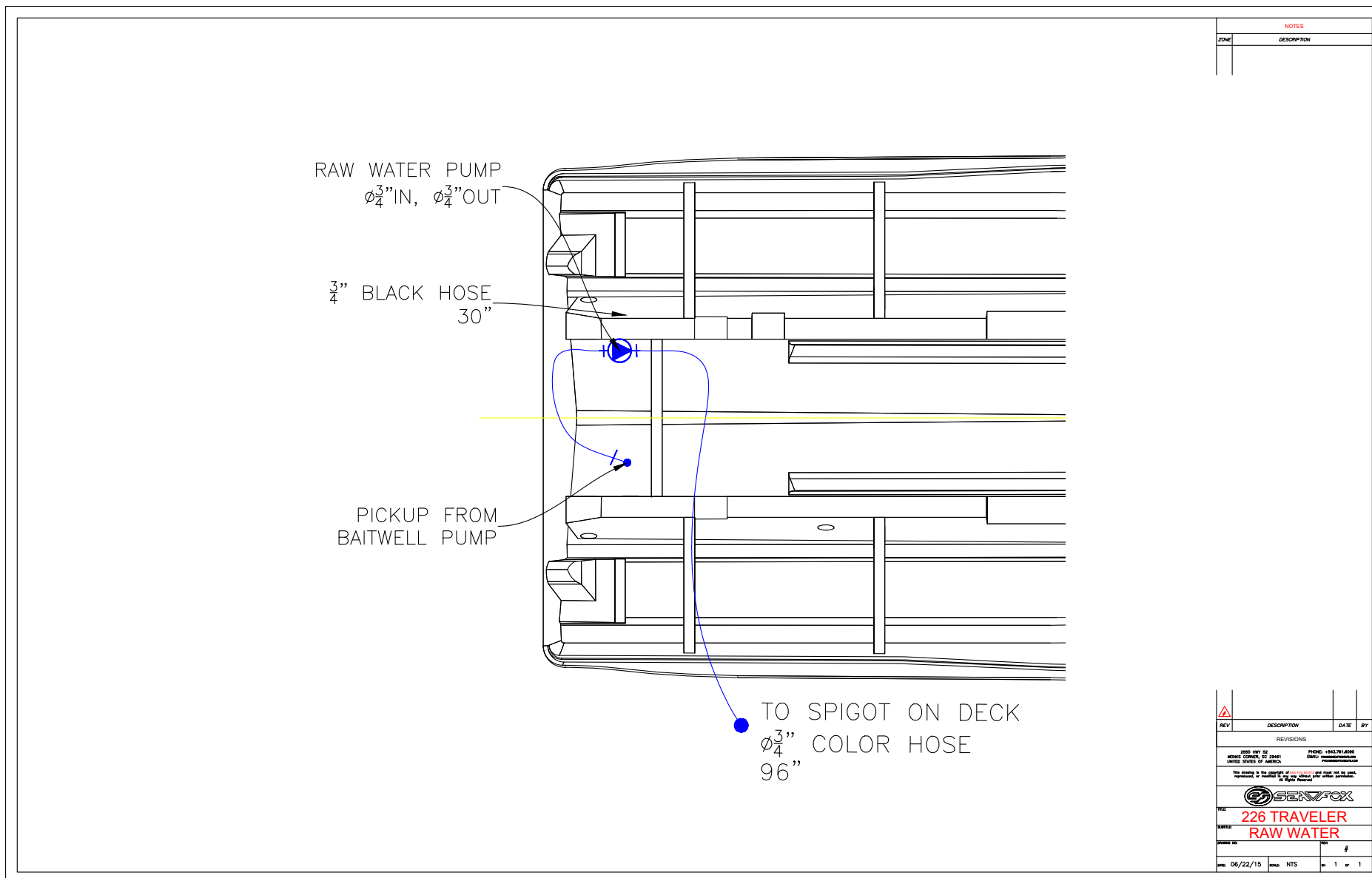
## TRAVELER LIVEWELL SYSTEM



NOTES	
ZONE	DESCRIPTION

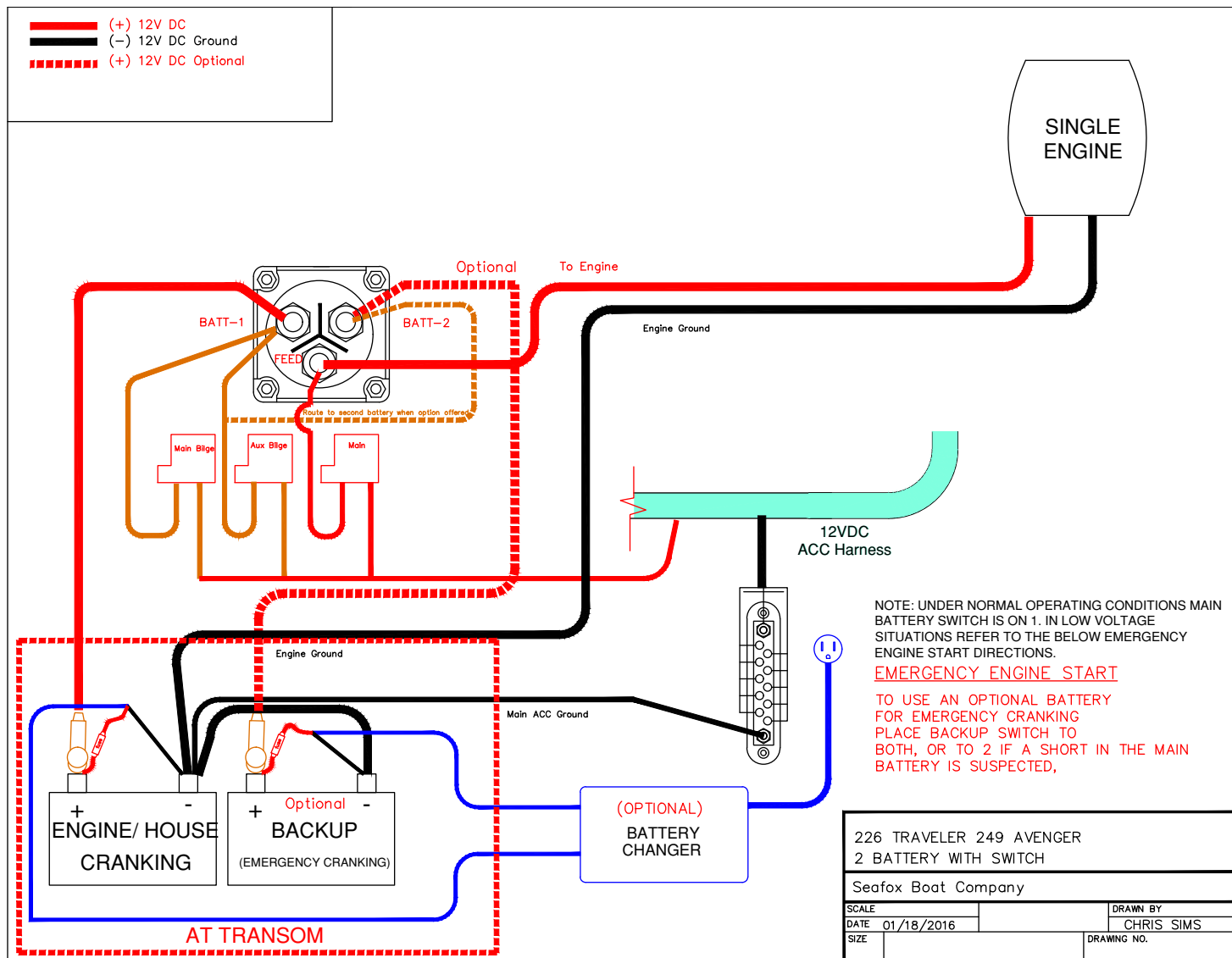
NEW THRU HULL & BALL VALVES		3/10/17	PY
REV	DESCRIPTION	DATE	BY
REVISIONS			
2000 Hwy 92 Phone: +52 961 610 4500			
MOMOT CORP., 20 29001			
UNITED STATES OF AMERICA			
This drawing is the property of SeaFox and shall not be used, reproduced or modified in any way without prior written permission.			
© SeaFox			
226 TRAVELLER			
LIVEWELL			
DATE: 06/22/15		NTS	1 of 1

## TRAVELER RAW WATER SYSTEM



## ELECTRICAL SCHEMATICS

### TYPICAL 2-BATTERY SETUP WITH TRANSOM



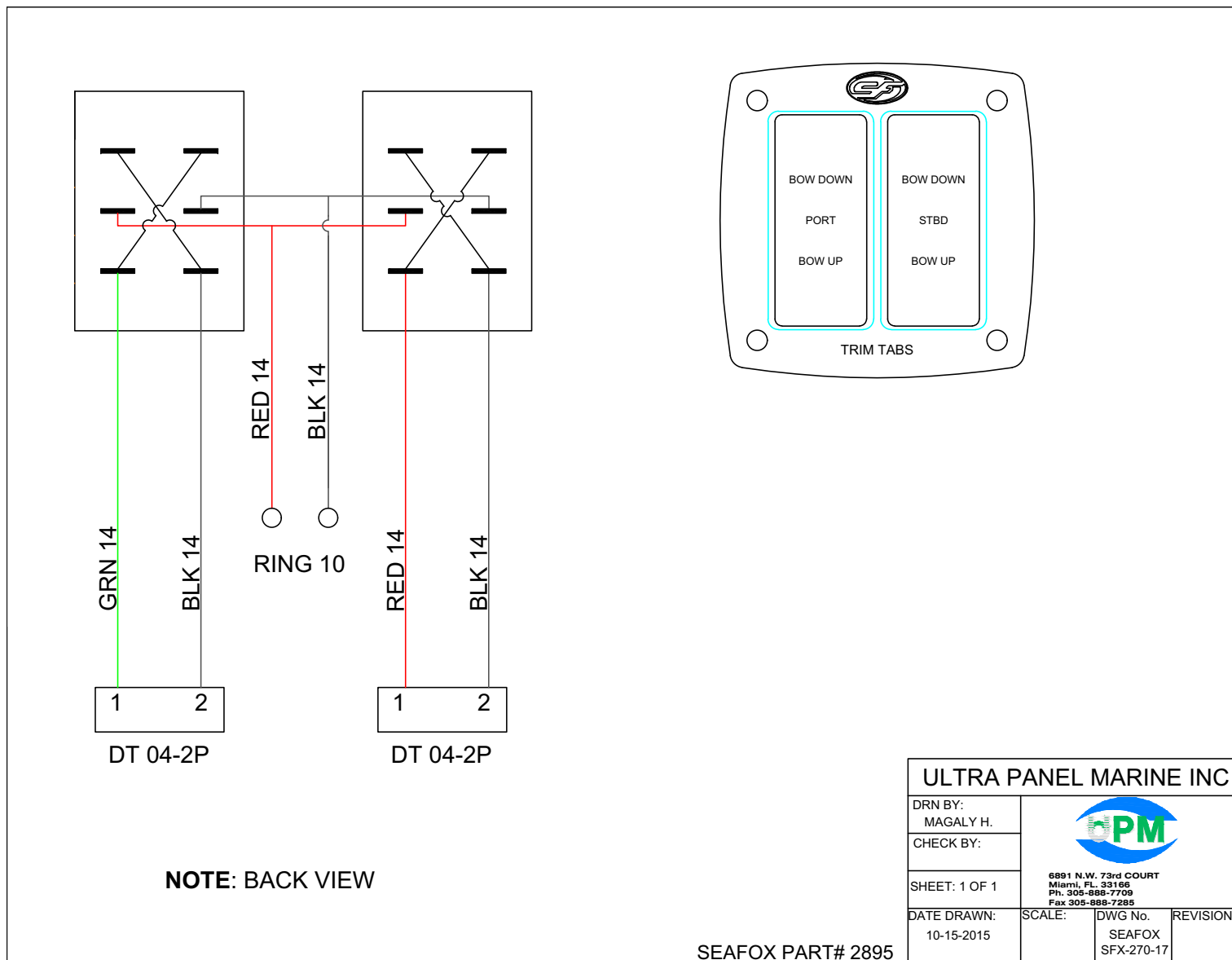




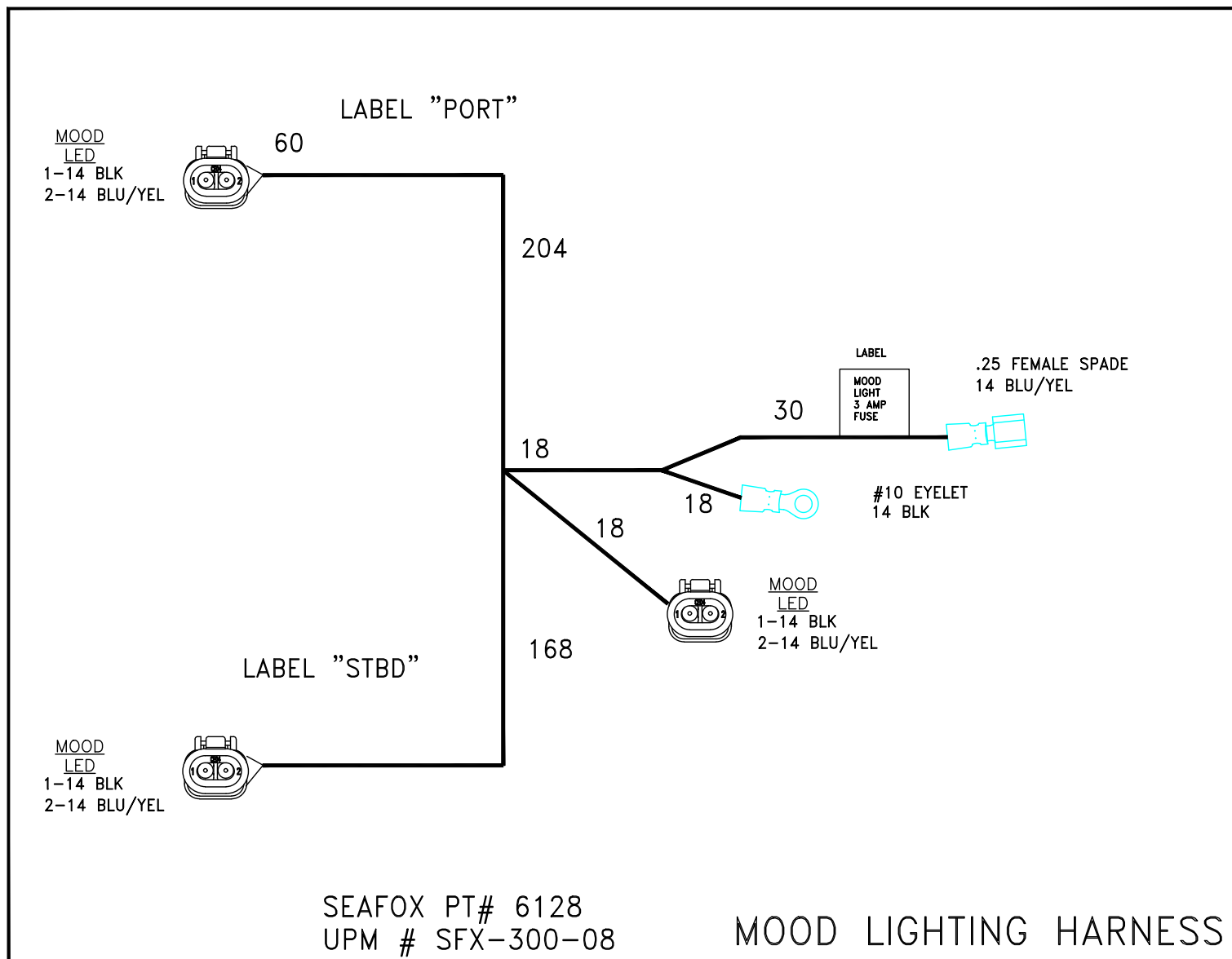




# TRIMTABS ELECTRIC SWITCH STANDARD (P/N 2895) – OPTIONAL



# HARNESS MOOD LIGHT W/ DEUTSCH (P/N 6128) – OPTIONAL





## HARNESS STEREO INFINITY CON (P/N 6129) – OPTIONAL

CUSTOMER SEAFOX BOAT CO.

PART # 6129 UPM# SFX-300-09

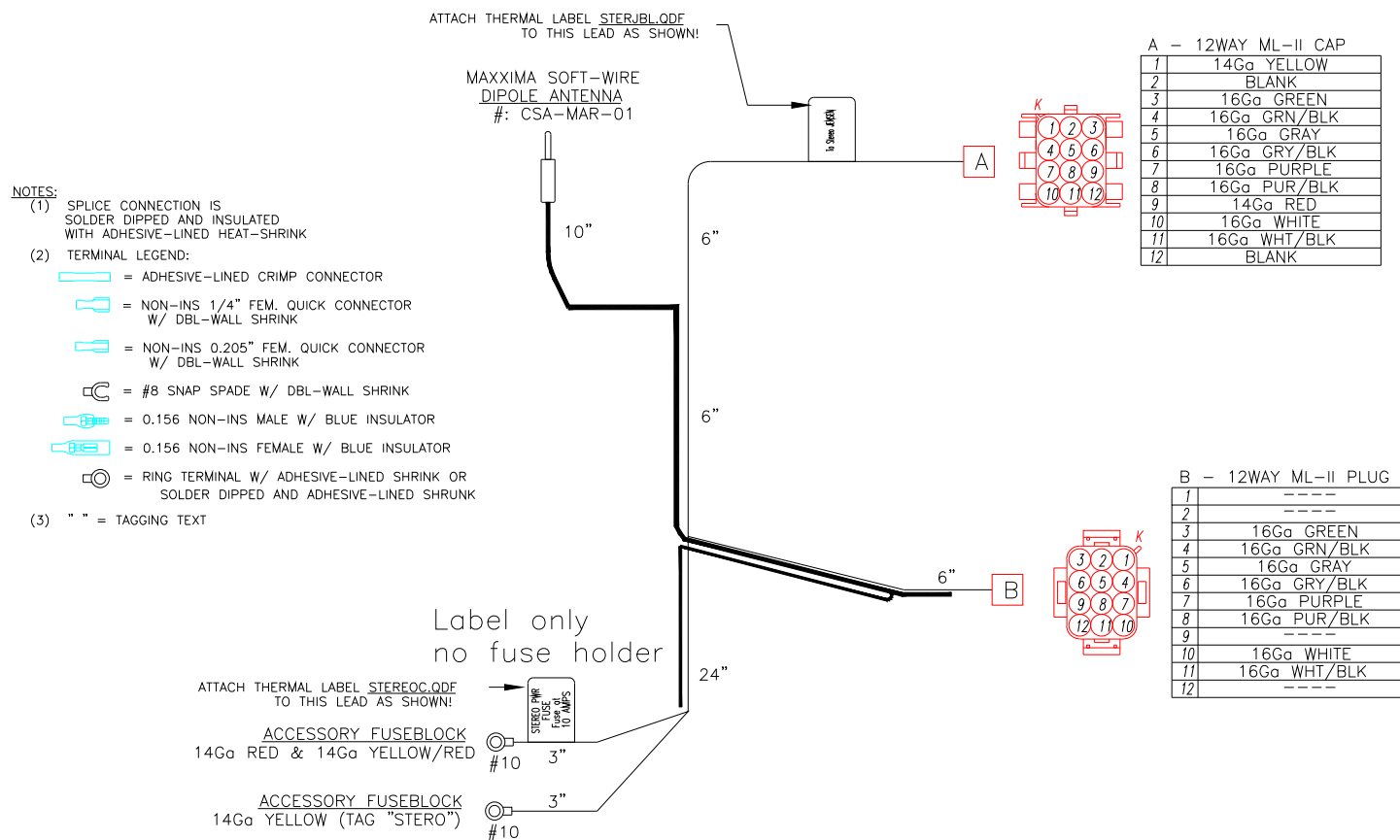
FILENAME \_\_\_\_\_

W/O # \_\_\_\_\_

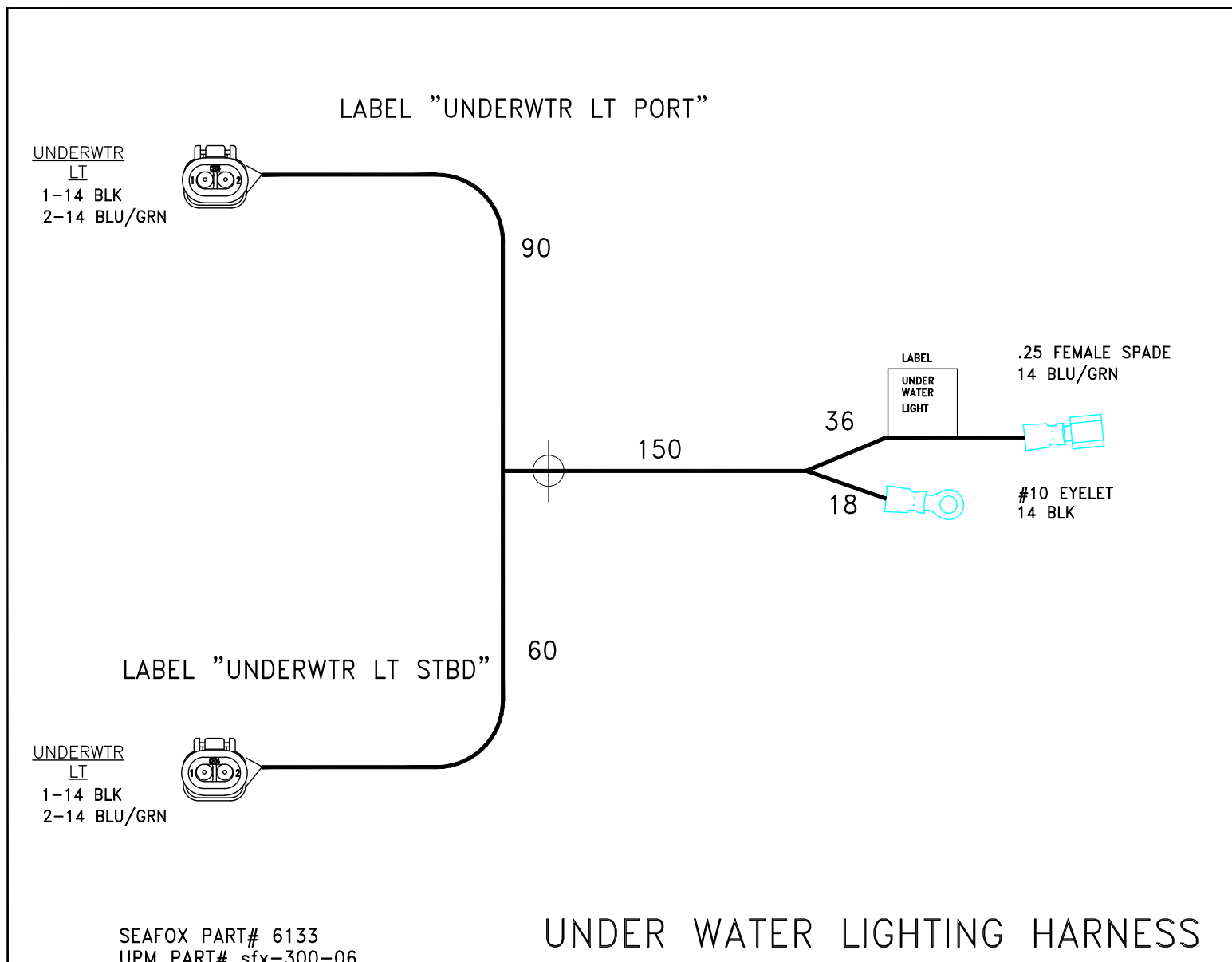
DUE DATE \_\_\_\_\_

MODEL ALL MODELS

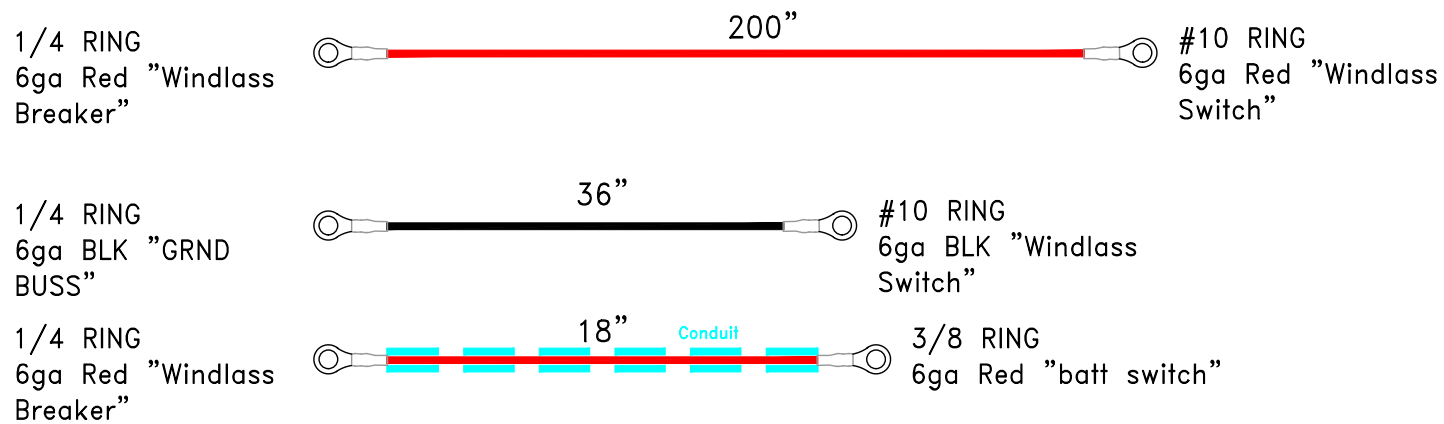
DESCRIPTION HARNESS STEREO INFINITY/JENSEN



# HARNESS UNDERWATER LIGHT W/ DEUTSCH (P/N 6133) – OPTIONAL



## HARNESS WINDLASS HULL AFT BATTERY (P/N 6134) – OPTIONAL

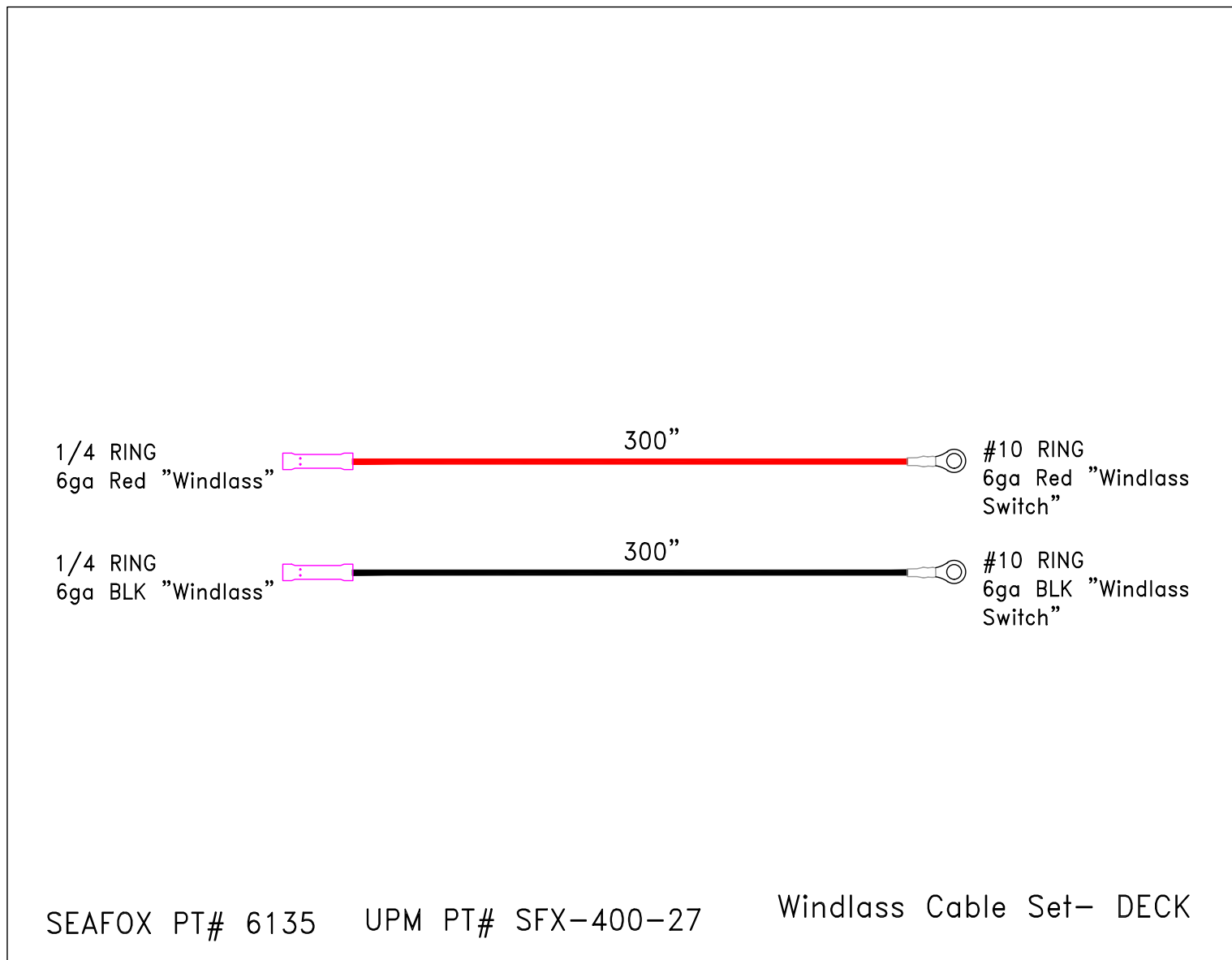


SEAFOX PT# 6134

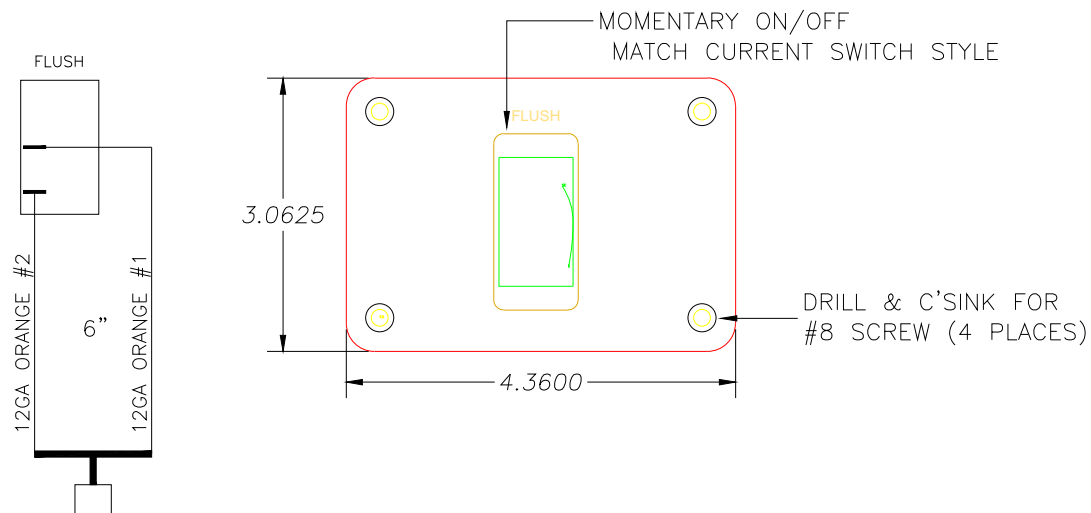
UPM PT#: SFX-300-07

Windlass Cable Set– HULL

# HARNESS WINDLASS DECK OPTION (P/N 6135) – OPTIONAL



## HEAD PANEL SWITCH ORB (P/N 6870) – OPTIONAL



1. 12GA ORANGE #1
2. 12GA ORANGE #2

MATCH CONNECTORS TO NEW  
256CC/WA HARNESS

**NOTES:**

- (1) PAINT TEXTURED BLACK
- (2) SCREEN WHITE

**ASSEMBLY NOTE:**  
**Inject every push-on connector**  
**with dielectric grease prior to**  
**attachment to switch.**

**SF# 6870 UPM# SFX-028-11**

Quantity	648-ALUMINUM - 6061-T6 ALUMINUM	
	Material	
Work Order Number	ELECTRIC FLUSH SWITCH PANEL - BLACK- WHITE LETTERS File Number	
	SEAFOX BOAT COMPANY	
Due Date	07-28-15	
	Faceplate Number	Panel Number







This Page Intentionally Left Blank

This Page Intentionally Left Blank



This Page Intentionally Left Blank

This Page Intentionally Left Blank



This Page Intentionally Left Blank





**Sea Fox Boat Company, Inc.**  
2550 Highway 52  
Moncks Corner, SC 29461-5024

Telephone: 843-761-6090  
[www.seafoxboats.com](http://www.seafoxboats.com)

Ken Cook Co.  
Printed in U.S.A.  
Rev 0819