



# 206 COMMANDER

## Owner's Manual Supplement

[www.SeaFoxBoats.com](http://www.SeaFoxBoats.com)

## **SEA FOX BOAT'S DISCLAIMER**

The following Owner's Manual is provided for information and educational purposes only and is not intended to offer or provide legal advice or create a contractual relationship between Sea Fox Boat Company and the owner of any Sea Fox brand vessel. Please beware that as a vessel owner you have non-delegable responsibilities regarding the safety, maintenance, fitness, and operation of your vessel and the extent of such responsibilities is ultimately determined by Federal law and regulations, the general maritime law of the United States, the laws and regulations of the states and territories of the United States, or the laws and regulations of the country where you operate your vessel. To fully understand your responsibilities as a vessel owner, and before operating or letting any third-party operate your vessel, we recommend that you consult the services of a qualified lawyer in admiralty and maritime law.

## TABLE OF CONTENTS

Introduction .....	3	Harness Main 180-200-186-206 (P/N 6119).....	13
Specifications .....	3	Panel Switch Shroud (P/N 6567) .....	14
Designated Occupant Seating .....	4	Harness Nav Short .....	15
Plumbing Schematics .....	5	Trimtabs Electrical Switch Standard (P/N 2895) – Optional . . .	16
Commander Aft Livewell System .....	5	Harness Mood Light w/Deutsch (P/N 6128) – Optional .....	17
Commander Bilge System.....	6	Harness Stereo Infinity Con (P/N 6129) – Optional.....	18
Commander Drains .....	7	Harness Stereo Infinity Deck (P/N 6130) – Optional.....	19
Commander Fresh Water System.....	8	Harness Underwater Light w/Deutsch (P/N 6133) –	
Commander Fuel System .....	9	Optional .....	20
Commander Forward Livewell System .....	10	Harness Trimtab Electric 20 ft Lenco (P/N 6564) – Optional . . .	21
Commander Raw Water System.....	11	Panel Switch Shroud (P/N 6860) – Optional.....	22
Electrical Schematics .....	12	Harness Top 186/206 Only (P/N 6920) – Optional .....	23
Typical 2-Battery Setup in Console.....	12		



This Page Intentionally Left Blank

## INTRODUCTION

**Congratulations and Welcome Aboard!** With so many boat brands to choose from, we want to congratulate you on your decision to choose Sea Fox Boats. For more than 24 years, Sea Fox offers the finest hand-crafted saltwater boats carefully balanced with the build-quality, features, styling and performance for the fairest price. Our passion for boating is evident in every model we make and we appreciate that you've noticed the Sea Fox difference.

We share your love for the moments spent on the water with friends and family, which is why every Sea Fox boat offers a unique blend of fishing/family options, technologies and innovative features. Your choice of a Sea Fox affirms that you have performed your research and compared the value of your model with the competition.

Whether you are new to the boating lifestyle or an old salt, we ask that **you and all other operators** read the owner's manual, this supplement, and all other literature provided with the boat **before** operating the boat or any equipment. We also recommend that all operators enroll in a boating safety course available online - see References and Contact Information in this section for education resources online.

This supplement contains model-specific information not included with the owner's manual. This manual is not intended to be a replacement for specific product literature provided by engine, accessory or other major equipment manufacturers, but rather to supplement that information.

Because of our philosophy of continuous product improvement, this manual serves as a general guide only, so the specifications and illustrations used may not match the equipment on your boat and are intended only as general reference views.

*We welcome you to the Sea Fox family and wish you many years of boating enjoyment!*

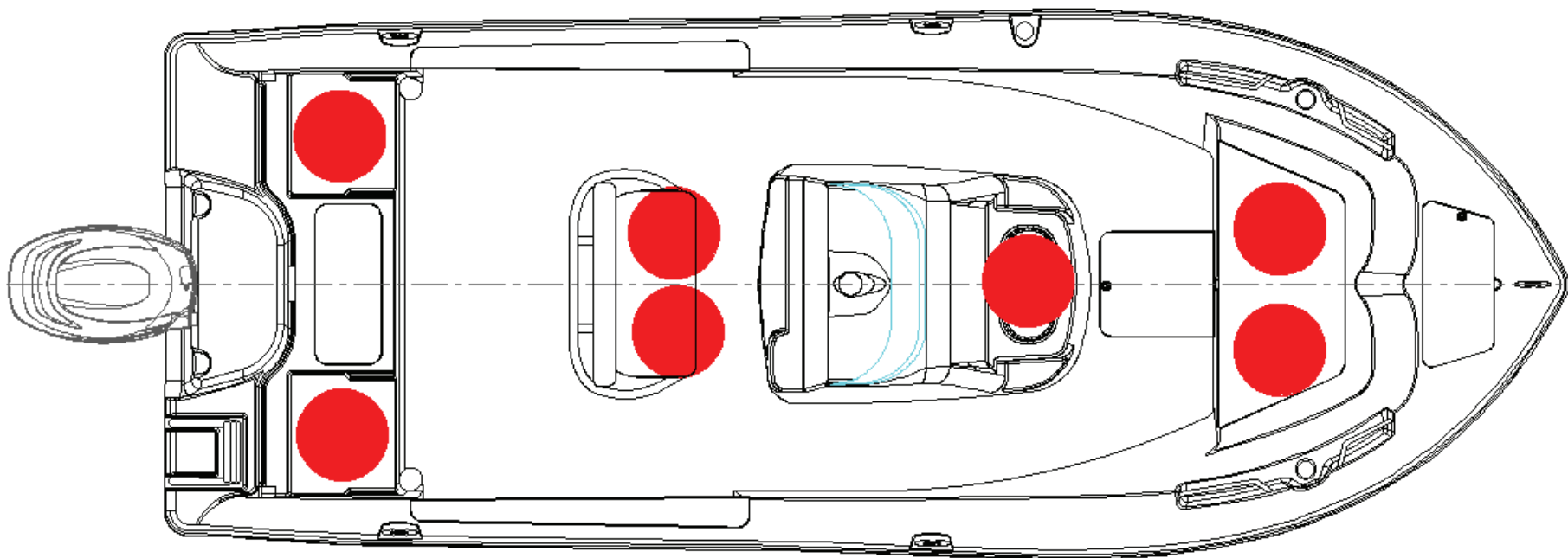
## SPECIFICATIONS

Max. Weight Capacity	2000 lbs (907 kg)
Persons	7
Persons Weight	1000 lbs (454 kg)
Max. HP	175 hp (130 kw)
L.O.A.	20' 4" (6.09 m)
Beam	8' 1" (2.59 m)
Draft	14 in. (0.36 m)
Height, Keel to Top (Light Folded)	99 in. (2.51 m)
Bridge Clearance Hard Top	85 in. (2.16 m)
Max. Weight Boat (w/ Fluids, Largest HP)	3828 lbs (1736 kg)
Fuel Tank Capacity	76 gal (288 L)
Freshwater Tank Capacity	6 gal (23 L)
Holding Tank Capacity	N/A



## DESIGNATED OCCUPANT SEATING

Be sure all passengers are properly seated in designated seating positions and not riding on the bow, bow pulpit, deck, gunwale or rear sun deck while underway. Passengers must use hand-holds and use caution when riding in the bow. Move to the aft passenger seats during rough water operation or if visibility is restricted.

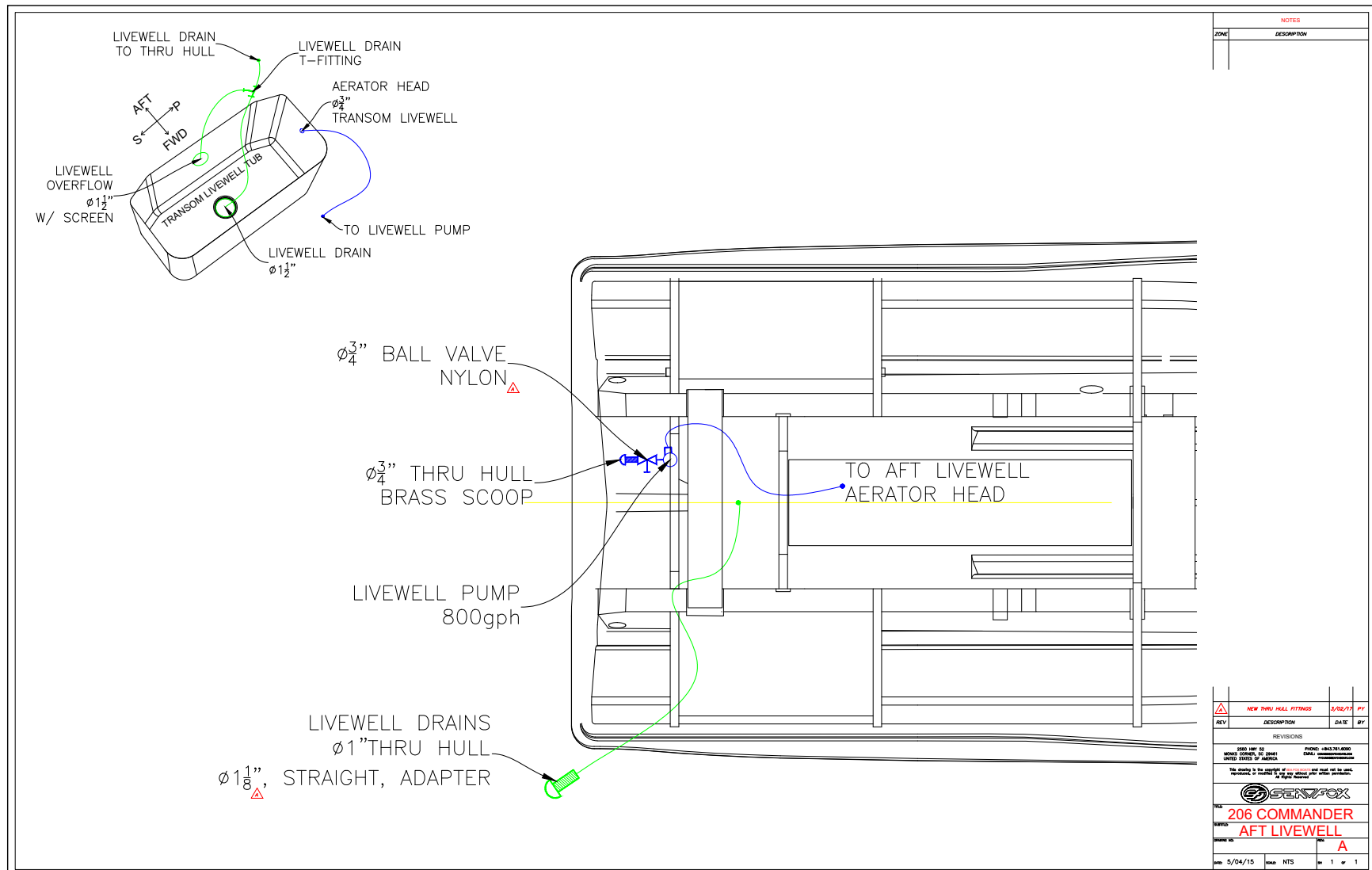


● = Seat position

SFOX-0017

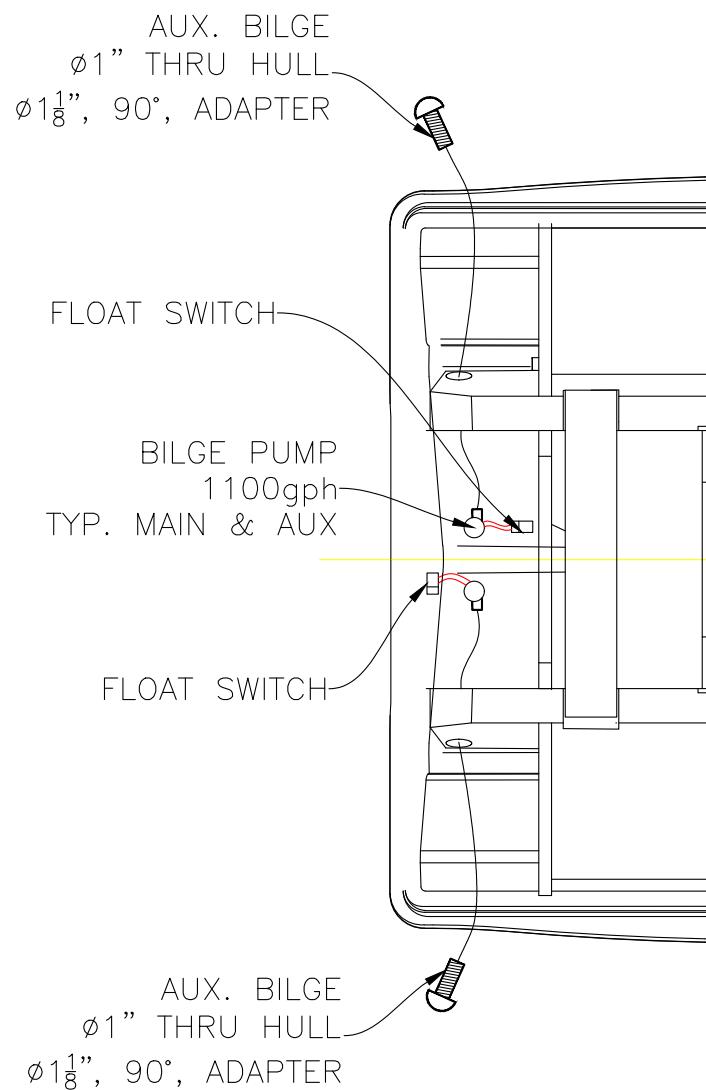
## PLUMBING SCHEMATICS

### COMMANDER AFT LIVEWELL SYSTEM







## COMMANDER BILGE SYSTEM

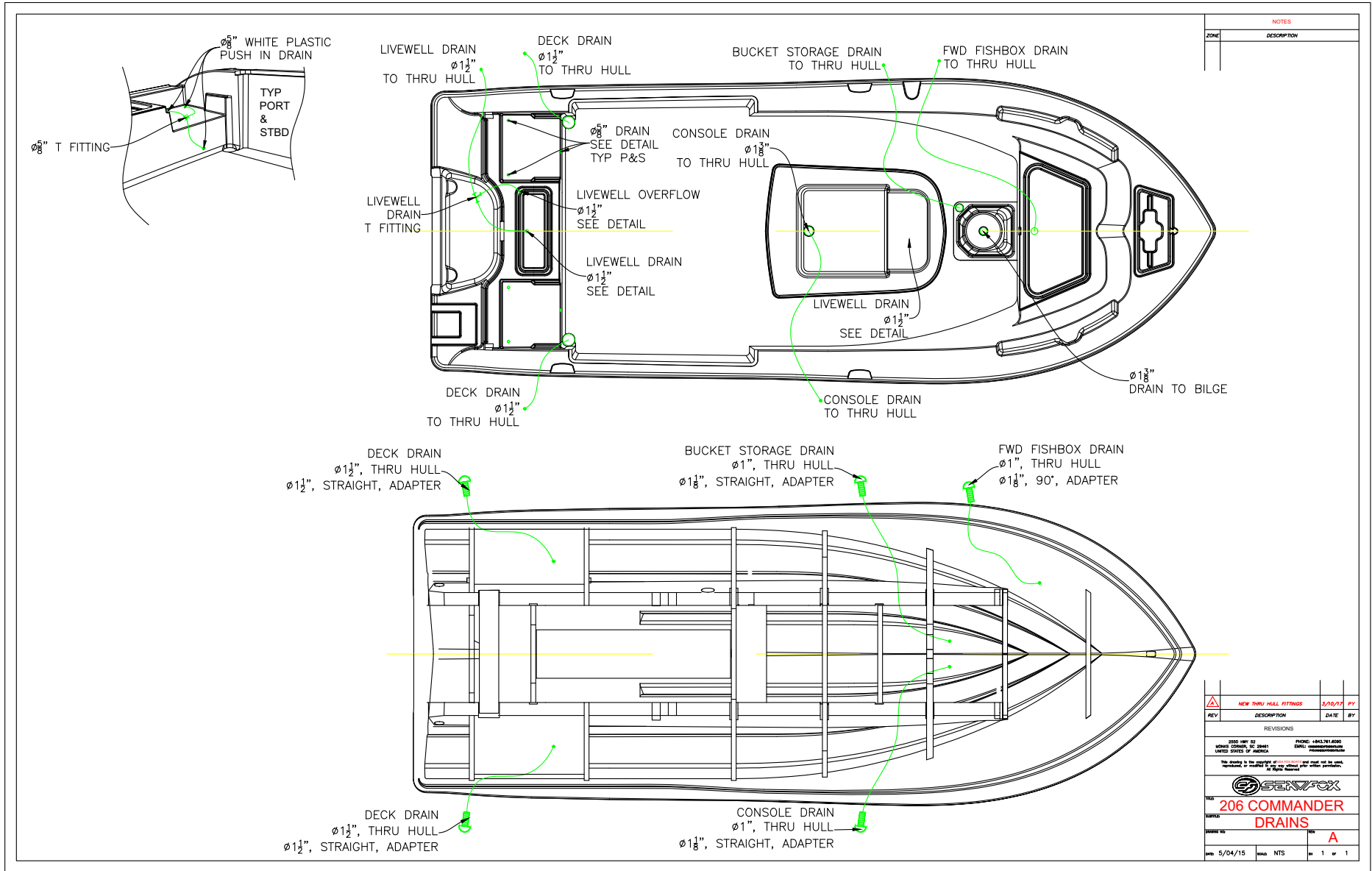


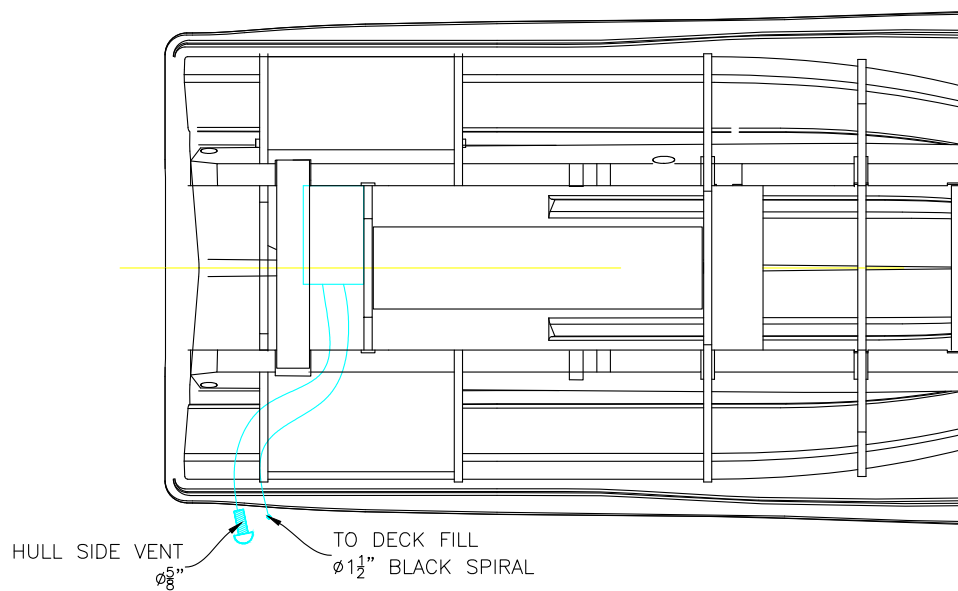
NOTES	
ZONE	DESCRIPTION

	<b>NEW THRU HULL FITTINGS</b>	<b>5/10/17</b>	
REV	DESCRIPTION	DATE	
REVISIONS			
2000 HWY 92 MORRIS CORP., P.O. BOX 1 UNITED STATES OF AMERICA		PHONE: +845.761.6800 EMAIL: <a href="mailto:commander@seafox.com">commander@seafox.com</a>	
This drawing is the property of SeaFox and must not be used, reproduced, or modified in any way without prior written permission. All Rights Reserved.			
 <b>SEAFox</b>			
TITLE	<b>206 COMMANDER BILGE SYSTEM</b>		
DATE	SCALE	NTS	IN 1 of 1
5/04/15			




**COMMANDER DRAINS**

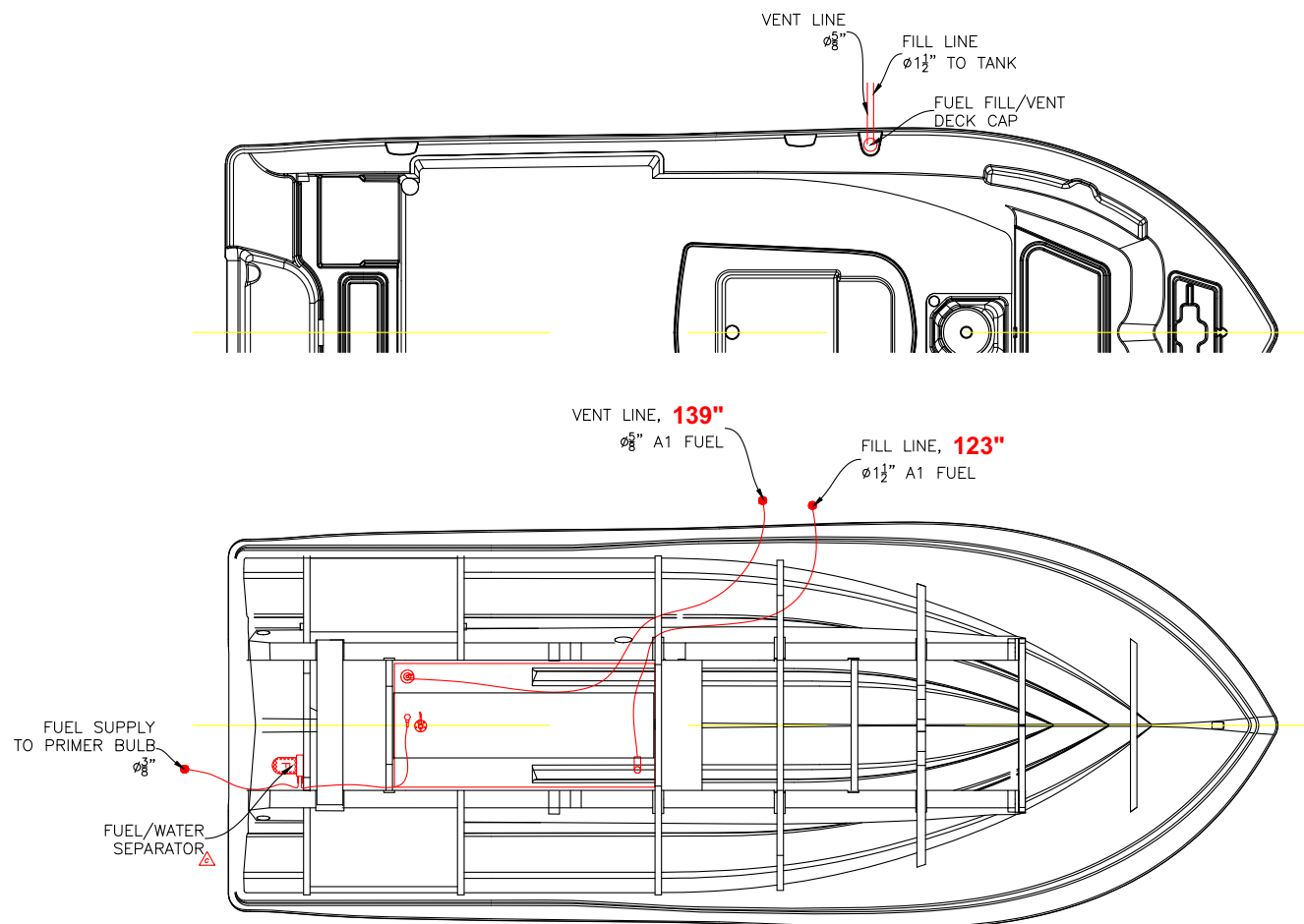





NOTES	
ZONE	DESCRIPTION

		
REV.	DESCRIPTION	DATE
REVISIONS		
0000 HWY 92 MCMURDO CORRAL, TX 78441 UNITED STATES OF AMERICA	PINCHED: #643,781,0590 DWG#: COMMERCIAL-PRODUCTS-CORRAL	
This drawing is the property of <b>SENTRY FOX</b> and must not be used, reproduced, or modified without written permission from SENTRY FOX. <i>In Right Reserved All Other Parties Prohibited</i>		
		
TLD:	<b>#206 COMMANDER</b>	
<b>FRESH WATER SYSTEM</b>		
DRAWING NO.	SHEET	#
Date: 5/04/15	Scale: NTS	No: 1 of 1

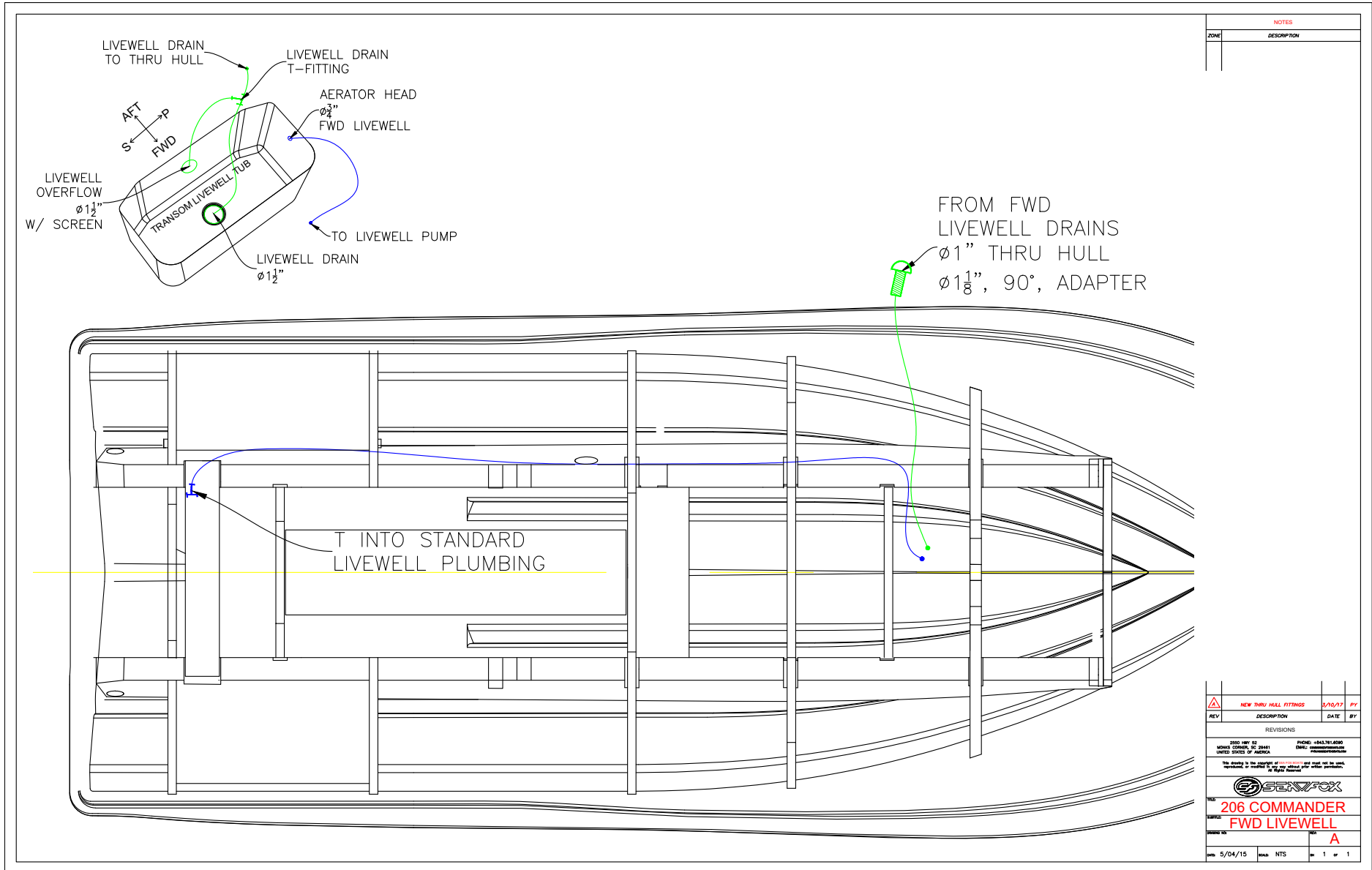
# COMMANDER FUEL SYSTEM



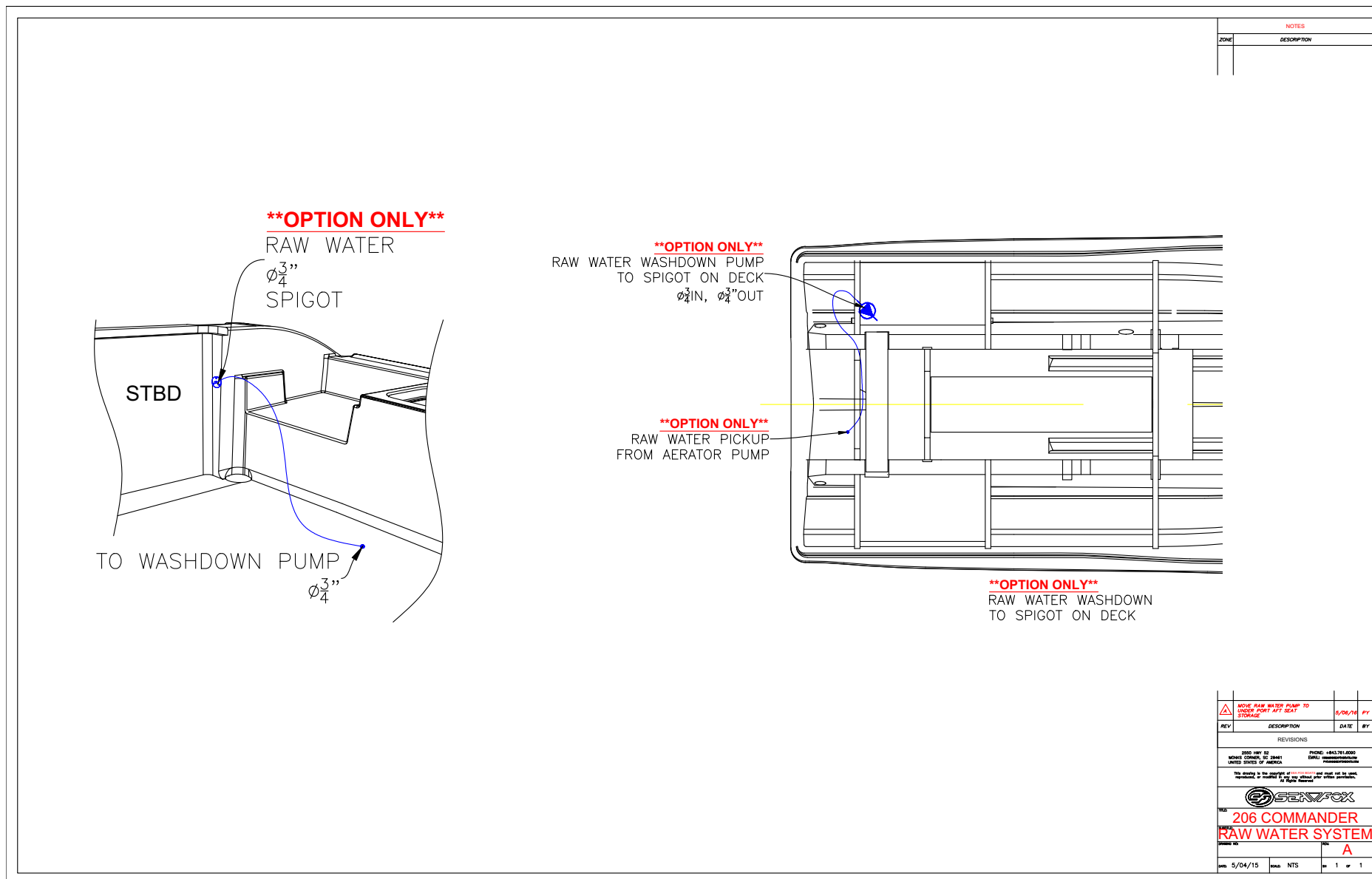
NOTES	
ZONE	DESCRIPTION

NEW FUEL TANKS REPLACE FUEL CAP T AND 1/4" FUEL HOSE		7/20/16
CORRECTED FUEL WATER SEP LOCATION		4/10/16
REV	DESCRIPTION	DATE
REVISIONS		
2000 HWY 92 MORRIS CORP., LLC 33461 UNITED STATES OF AMERICA		PHONE: +845.761.6800 EMAIL: <a href="mailto:commander@seafox.com">commander@seafox.com</a>
This drawing is the property of SeaFox and shall not be used, reproduced or modified in any way without prior written permission. All Rights Reserved.		
		
TEL: 206 COMMANDER FUEL SYSTEM		
SCALE: D		
DRAWING NO.		SHEET
DATE: 5/04/15	SCALE: NTS	SHEET 1 OF 1

## COMMANDER FORWARD LIVEWELL SYSTEM

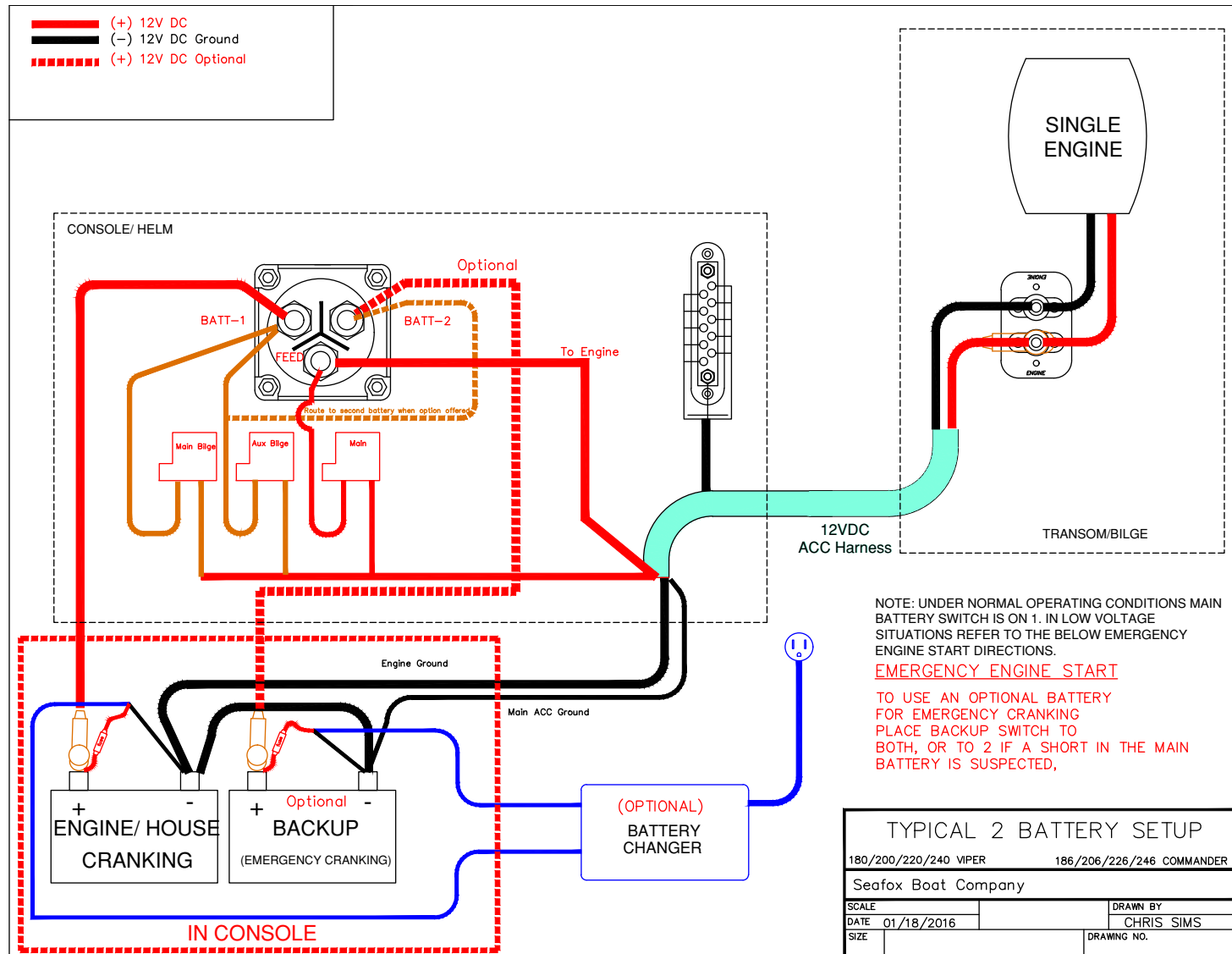


## COMMANDER RAW WATER SYSTEM

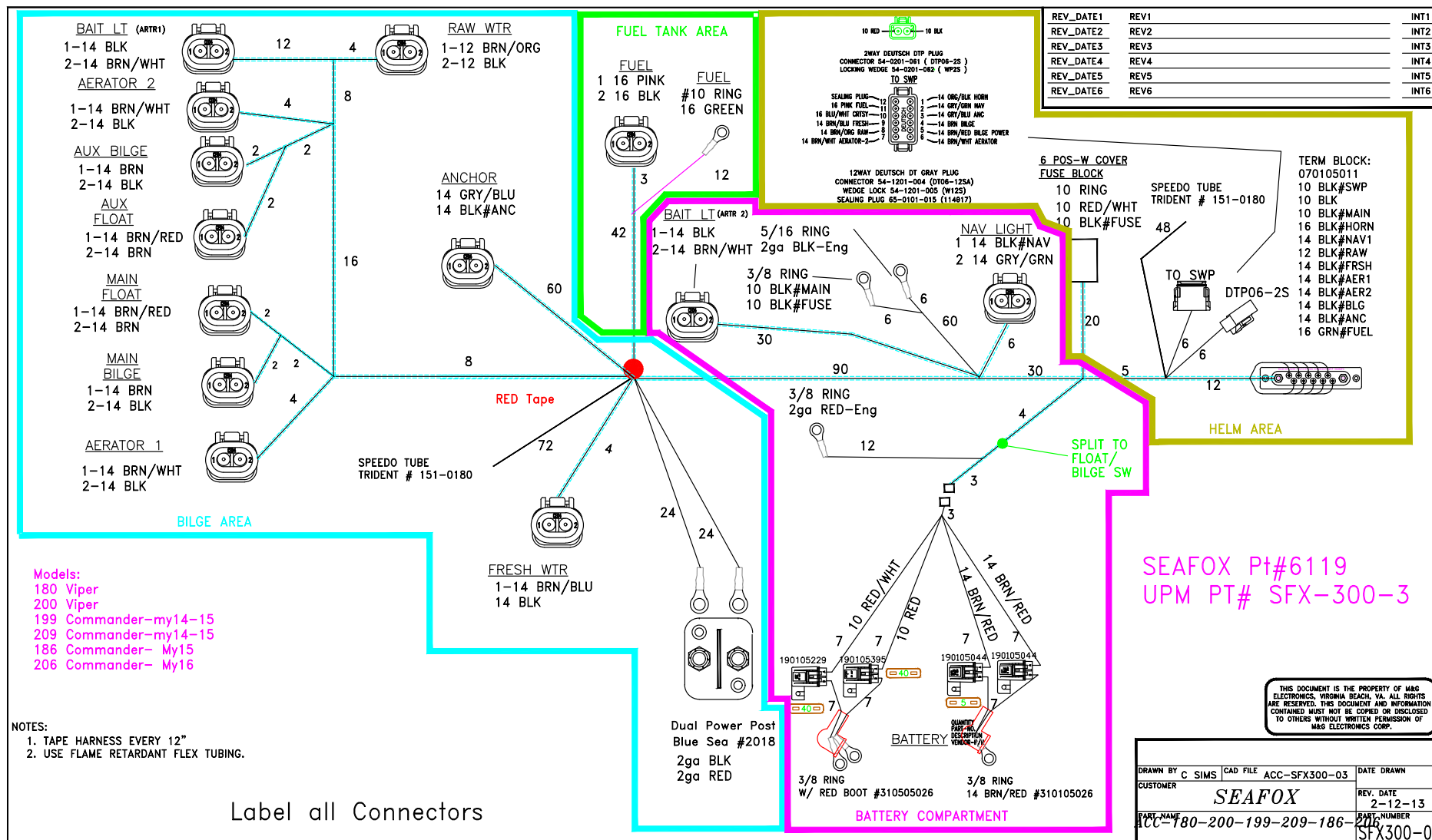


## ELECTRICAL SCHEMATICS

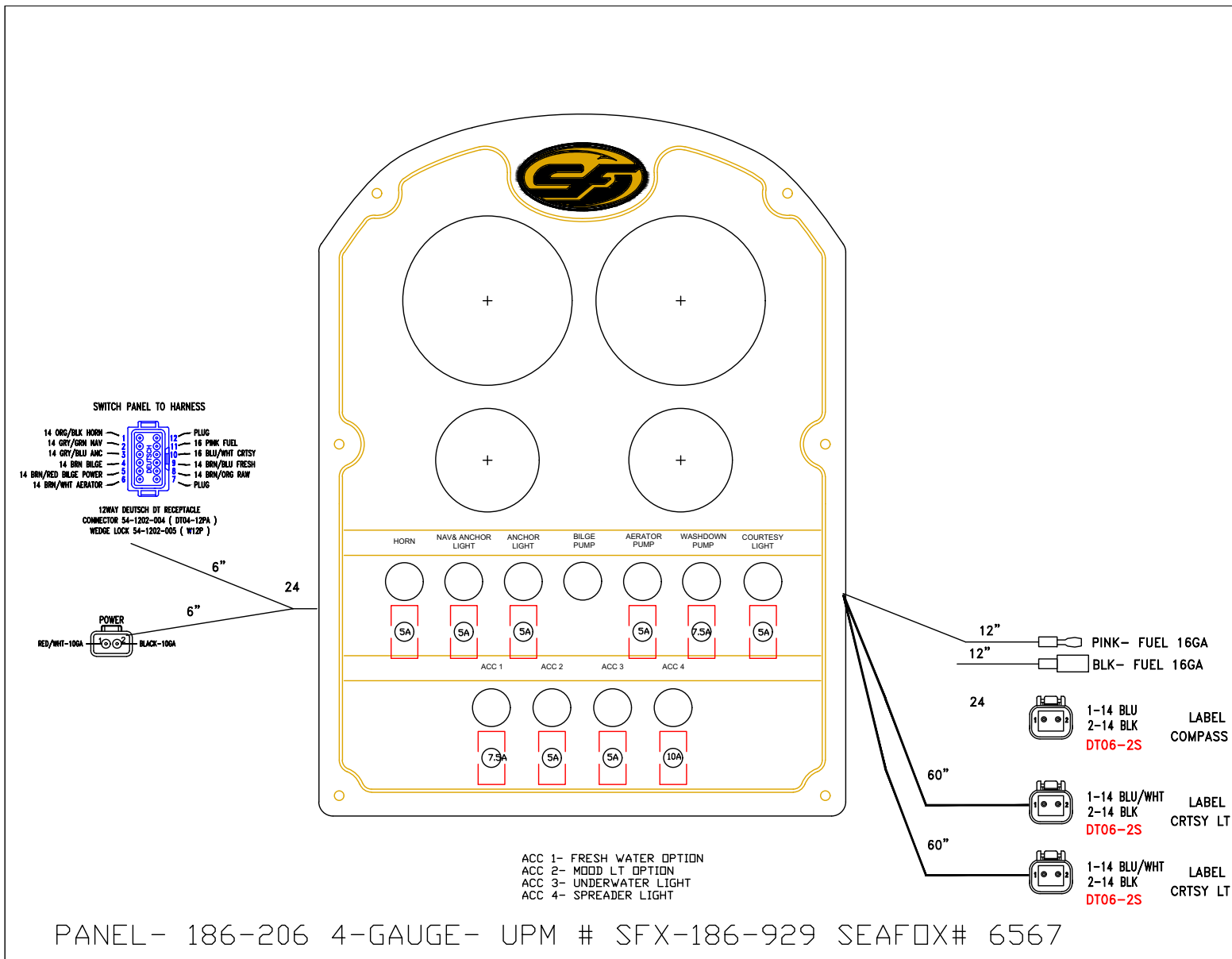
### TYPICAL 2-BATTERY SETUP IN CONSOLE



# HARNESS MAIN 180-200-186-206 (P/N 6119)

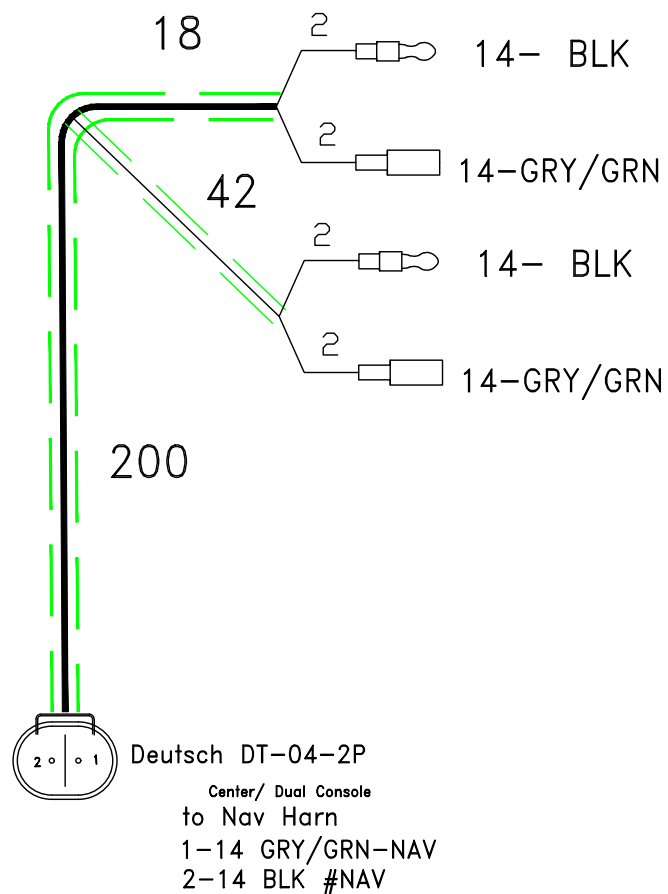


## PANEL SWITCH SHROUD (P/N 6567)





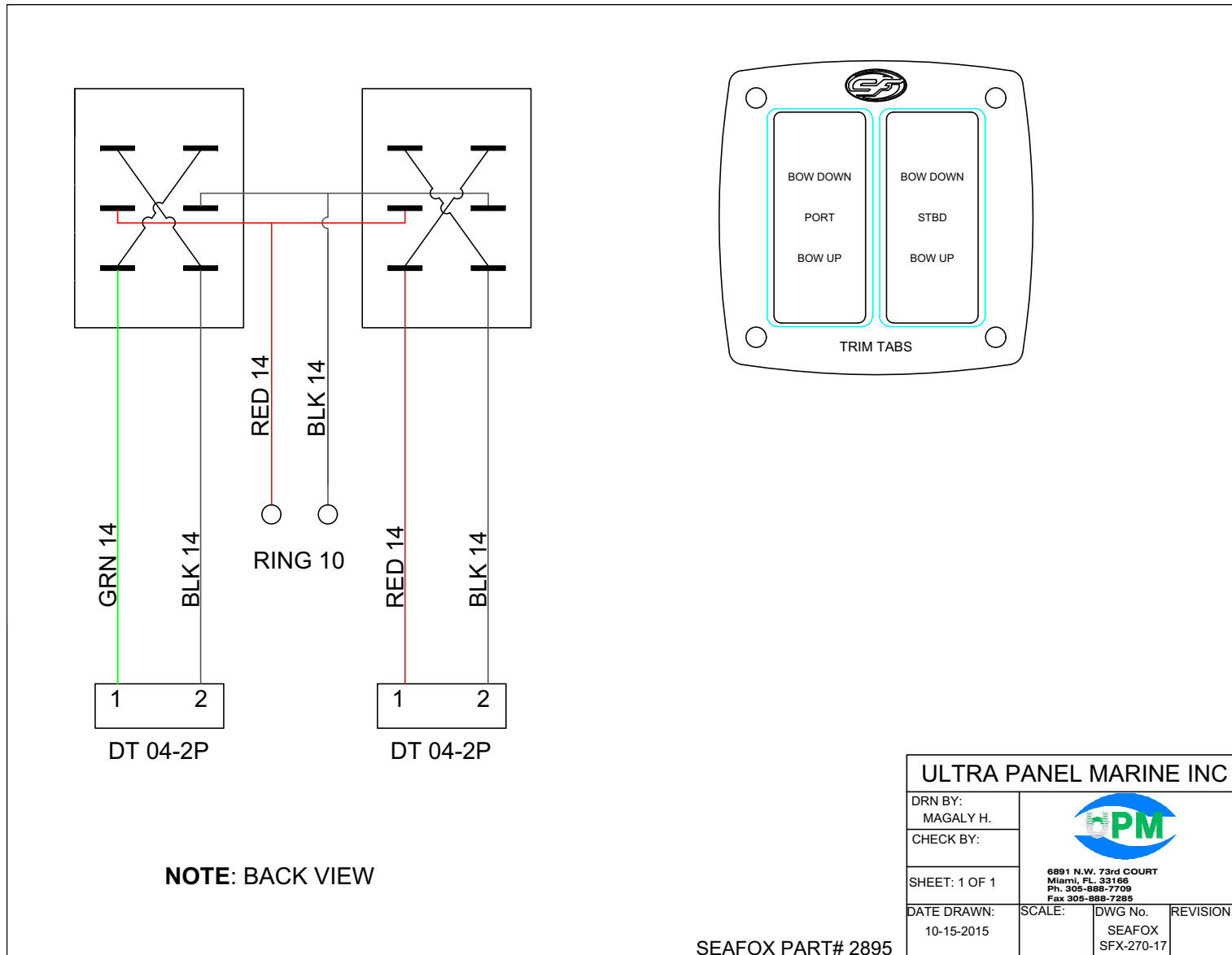
# HARNESS NAV SHORT



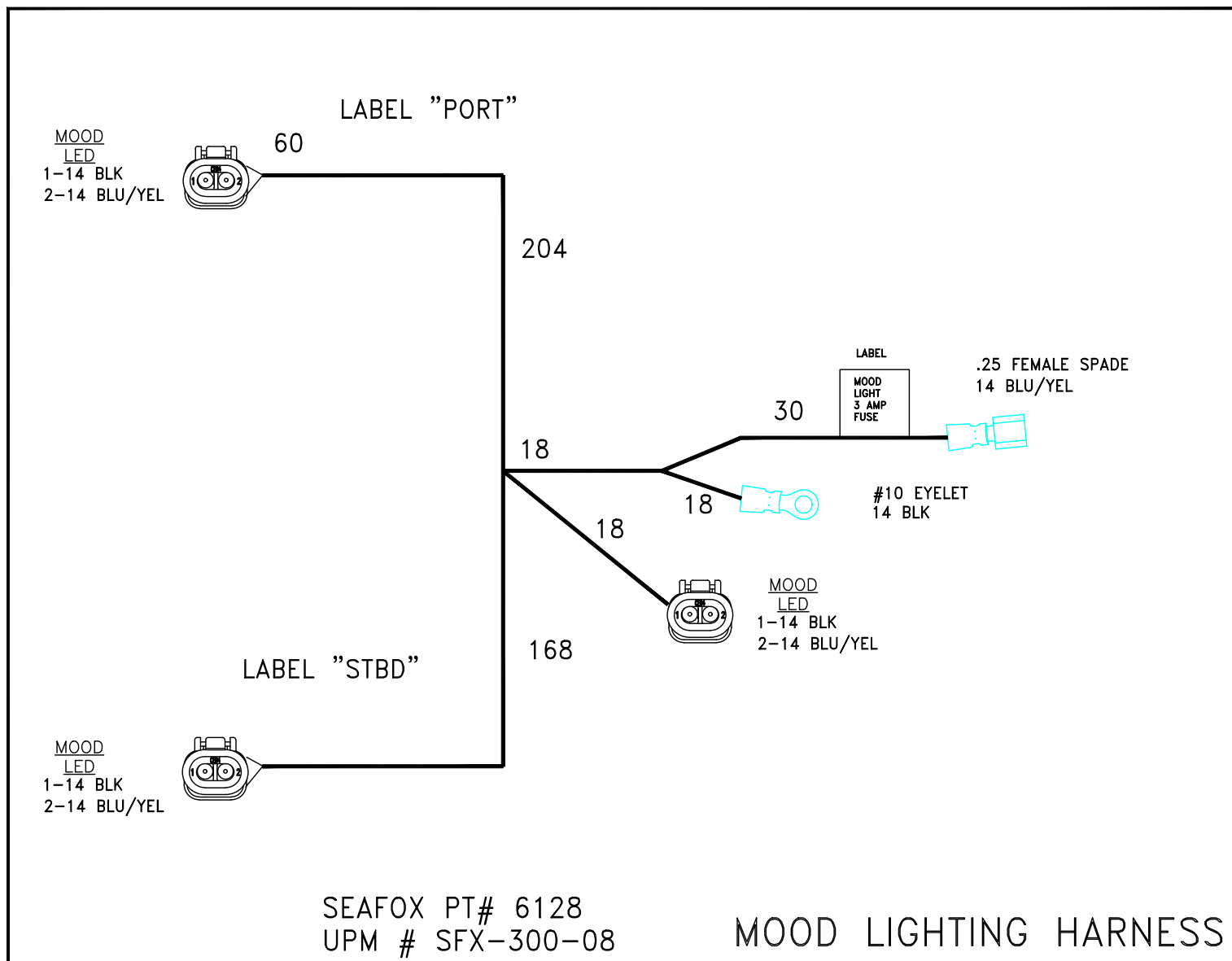
Harness, NAV-SHORT- NEW#

est-7-18-16

# TRIMTABS ELECTRICAL SWITCH STANDARD (P/N 2895) – OPTIONAL



# HARNESS MOOD LIGHT W/DEUTSCH (P/N 6128) – OPTIONAL

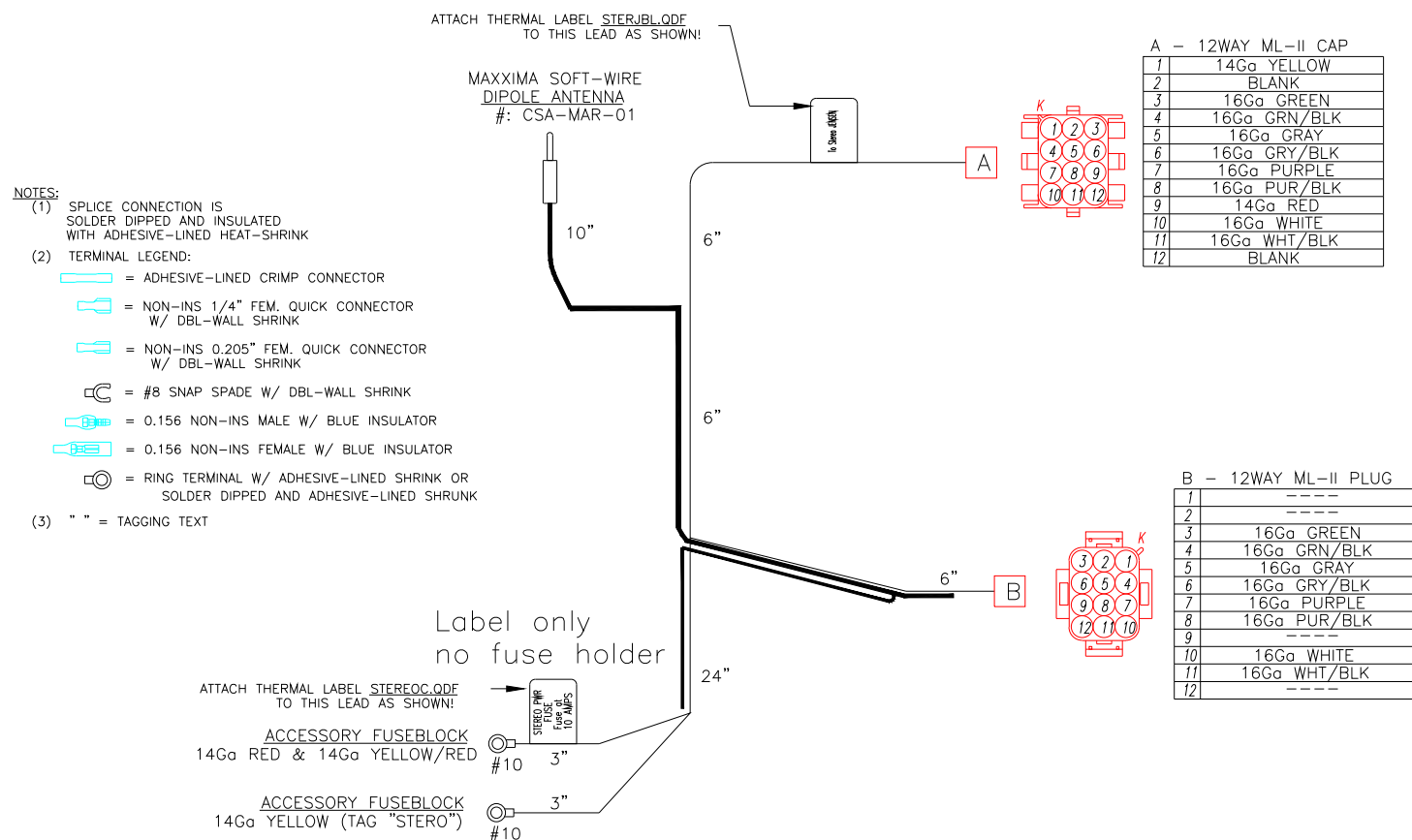




## HARNESS STEREO INFINITY CON (P/N 6129) – OPTIONAL

CUSTOMER SEAFOX BOAT CO.  
PART # 6129 UPM# SFX-300-09  
FILENAME \_\_\_\_\_

W/O # \_\_\_\_\_  
DUE DATE \_\_\_\_\_  
MODEL ALL MODELS  
DESCRIPTION HARNESS STEREO INFINITY/JENSEN



## HARNESS STEREO INFINITY DECK (P/N 6130) – OPTIONAL

CUSTOMER SEAFOX BOAT CO.

PART # 6130 UPM# SFX-300-04

FILENAME \_\_\_\_\_


W/O # \_\_\_\_\_

DUE DATE \_\_\_\_\_

MODEL ALL MODELS

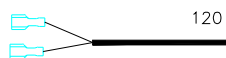
DESCRIPTION HARNESS DECK INFINTY STEREO

### NOTES:

 = NON-INS 1/4" FEM. QUICK CONNECTOR  
W/ DBL-WALL SHRINK

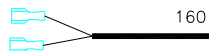
LABEL "REAR LEFT"

16Ga GREEN  
16Ga GRN/BLK



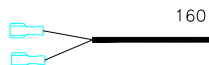
LABEL "FRONT LEFT"

16Ga WHITE  
16Ga WHT/BLK



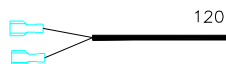
LABEL "FRONT RIGHT"

16Ga GRAY  
16Ga GRY/BLK



LABEL "REAR RIGHT"

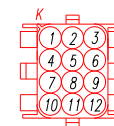
16Ga PURPLE  
16Ga PUR/BLK



48

24

72

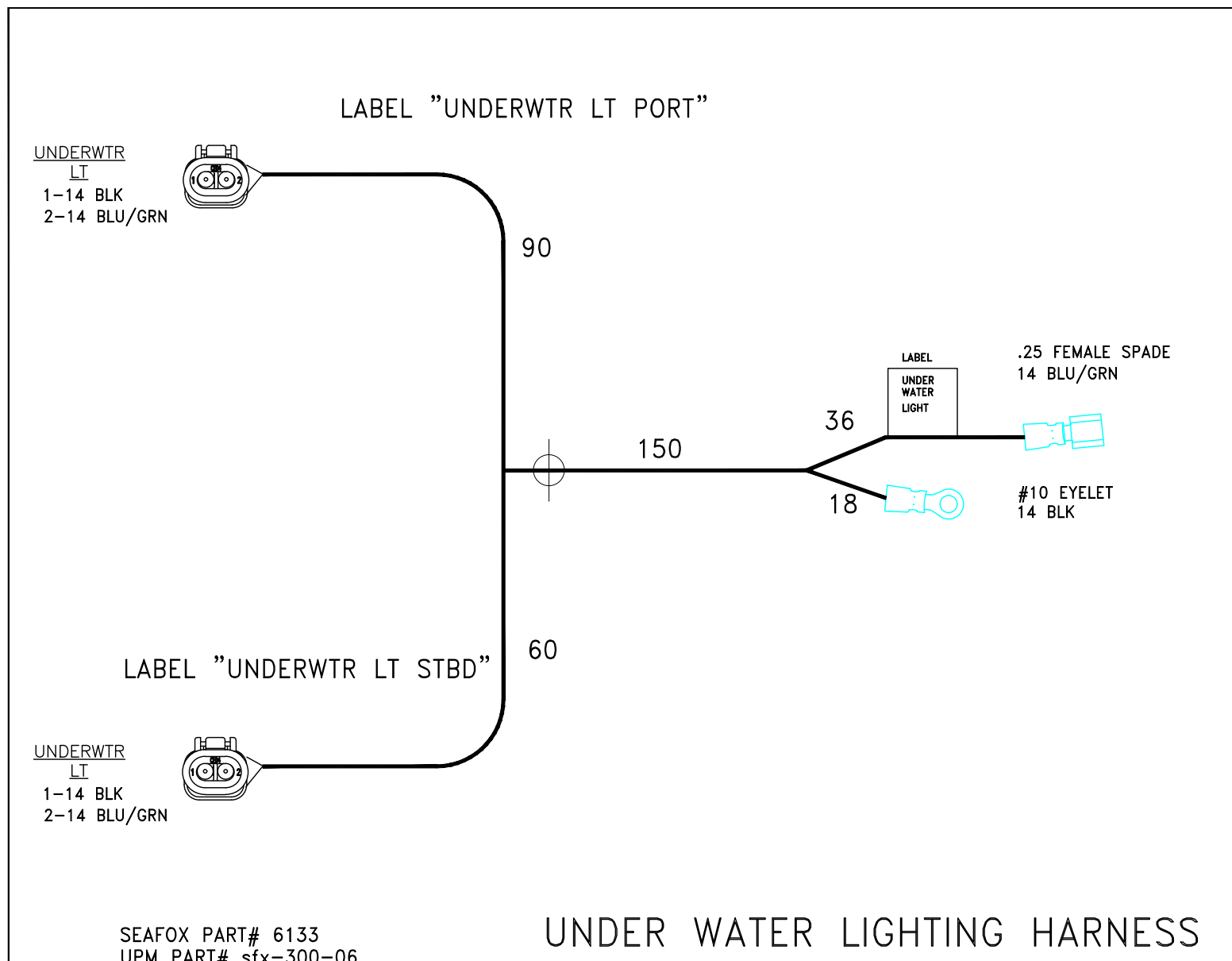


B - 12WAY ML-II PLUG

1	----
2	----
3	16Ga GREEN
4	16Ga GRN/BLK
5	16Ga GRAY
6	16Ga GRY/BLK
7	16Ga PURPLE
8	16Ga PUR/BLK
9	----
10	16Ga WHITE
11	16Ga WHT/BLK
12	----

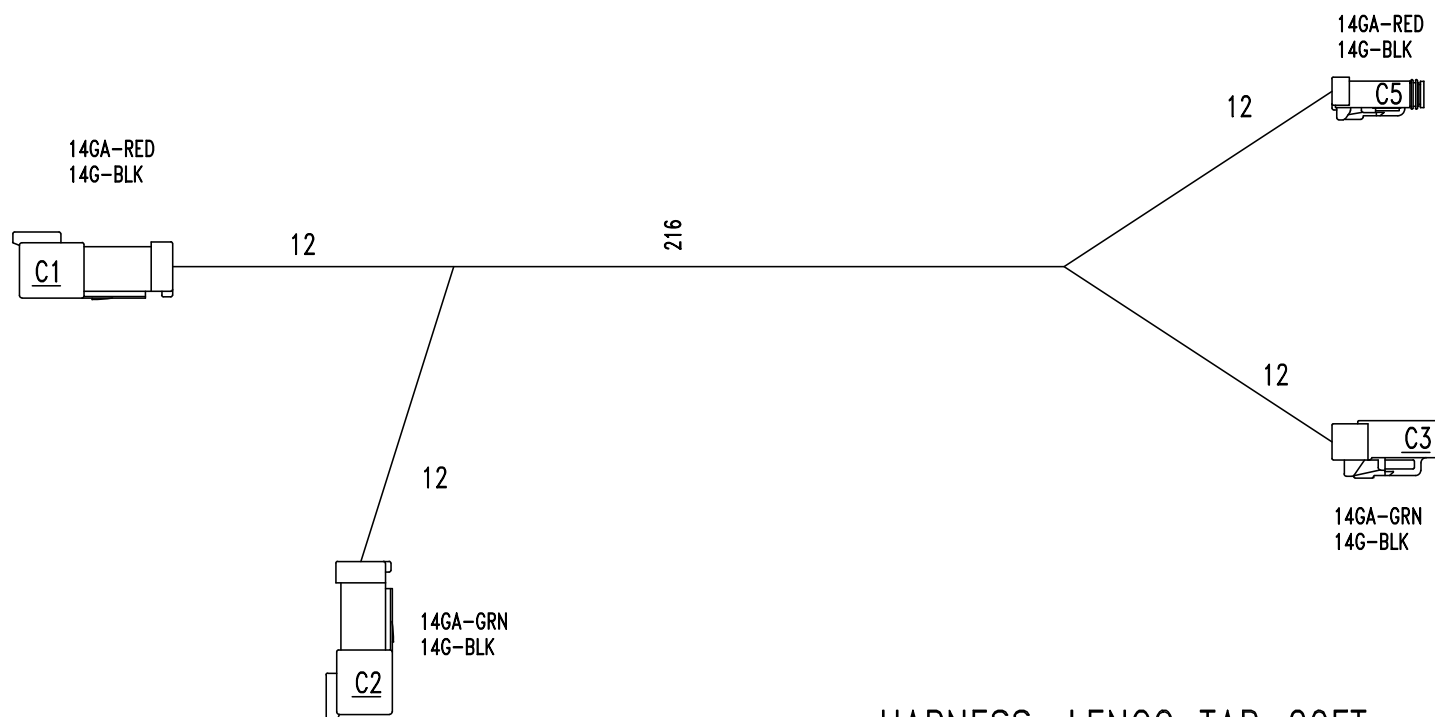


## HARNESS UNDERWATER LIGHT W/DEUTSCH (P/N 6133) – OPTIONAL



# HARNESS TRIMTAB ELECTRIC 20 FT Lenco (P/N 6564) – OPTIONAL

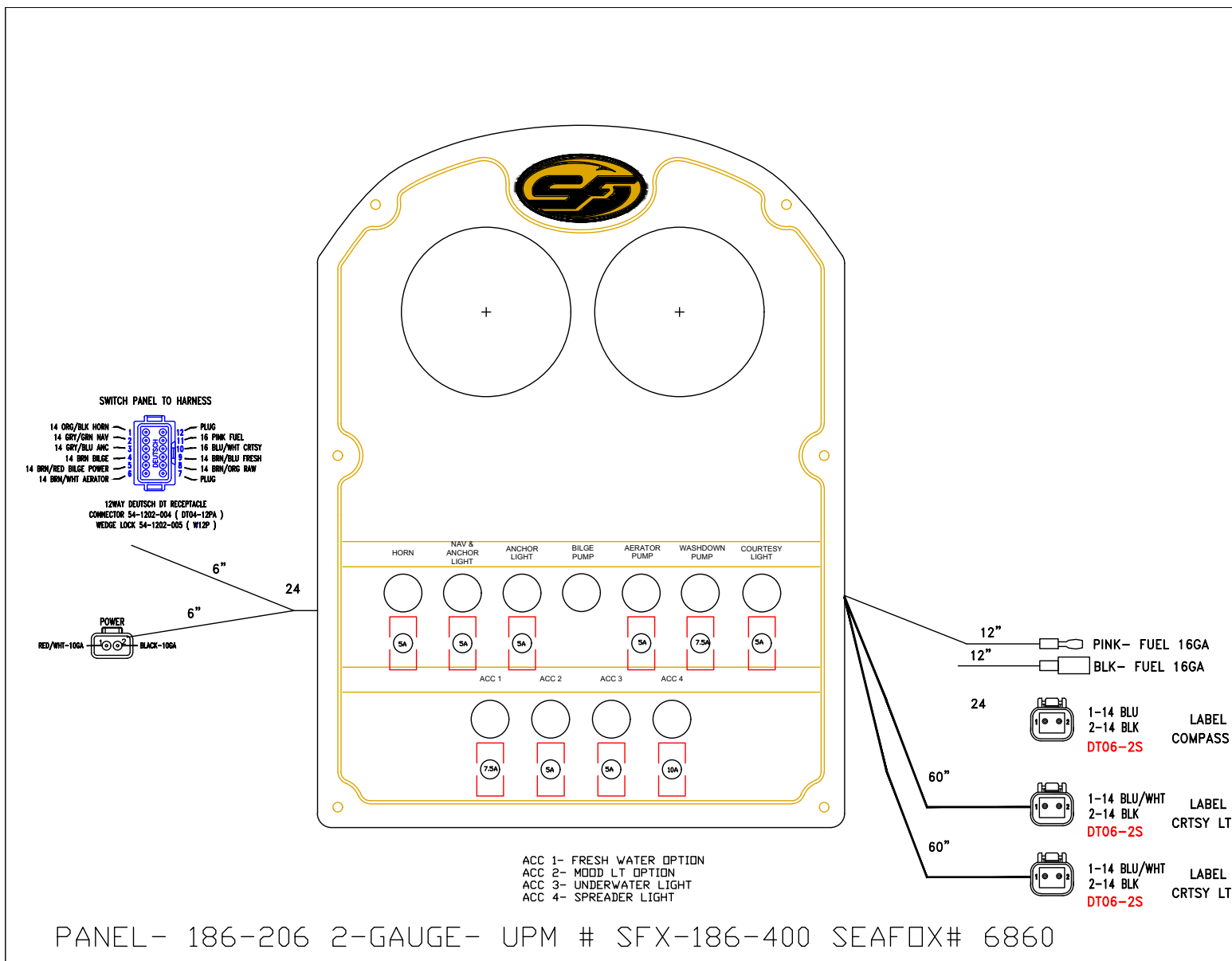
SEAFOX PT#:6564  
UPM PT# SFX-050-020



HARNESS, Lenco TAB-20FT

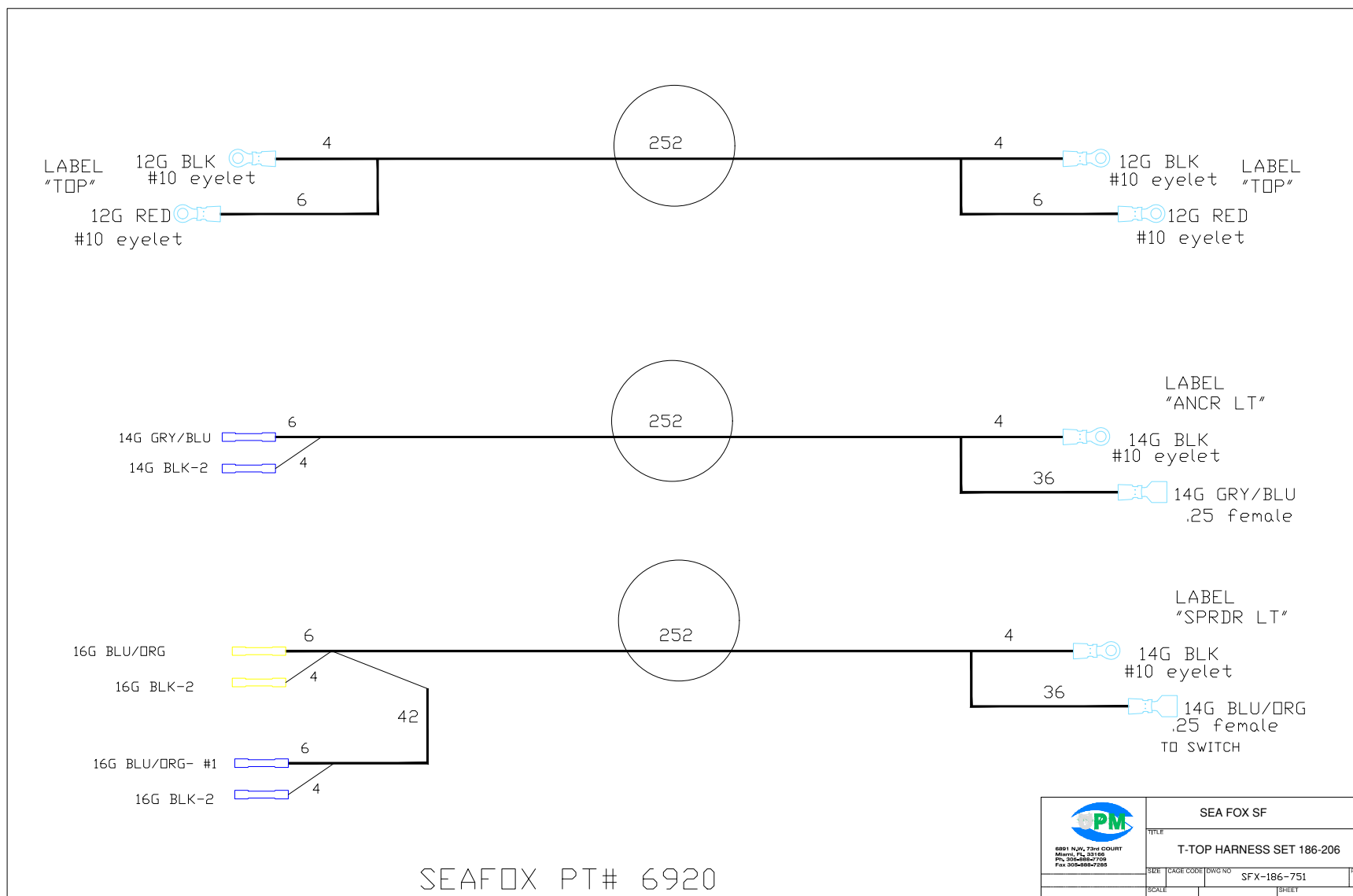


## PANEL SWITCH SHROUD (P/N 6860) – OPTIONAL





# HARNESS TOP 186/206 ONLY (P/N 6920) – OPTIONAL





This Page Intentionally Left Blank

This Page Intentionally Left Blank



This Page Intentionally Left Blank

This Page Intentionally Left Blank



This Page Intentionally Left Blank





**Sea Fox Boat Company, Inc.**  
2550 Highway 52  
Moncks Corner, SC 29461-5024

Telephone: 843-761-6090  
[www.seafoxboats.com](http://www.seafoxboats.com)

Ken Cook Co.  
Printed in U.S.A.  
Rev 0819