

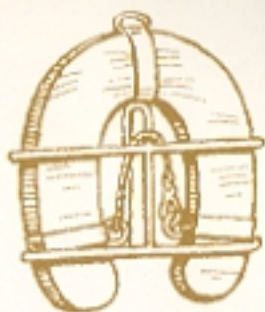
SEAFOX<sup>TM</sup> CATALOG

2000



BOATS THAT BRING THE FAMILY TOGETHER





## TABLE OF CONTENTS

From Our Family To Yours .....	1
Sea Fox's™ Exclusive Fibre-iSystem .....	2
160 Center Console .....	3
172 Center Console .....	4
192 Center Console .....	5
210 Center Console .....	6
230 Center Console .....	7
257 Center Console .....	8
215 Bay Fisher .....	9
210 Walk Around .....	10
230 Walk Around .....	11
181 Deck Boat .....	12
201 Deck Boat .....	13
221 Deck Boat .....	14
204 Cuddy Fish .....	15
Optional Equipment .....	16
Sea Fox Facts .....	Inside Back Cover





## FROM OUR FAMILY

## TO YOURS

The sleek, crafty new Sea Fox™ line of fishing and deck boats is designed in a wide range of sizes – from 16 to 25 feet. Six center consoles and two walk arounds mean we've got a family boat for just about every type of fishing you enjoy. And with all the standard features you'll find on each Sea Fox model, you'll enjoy a boat that offers both quality and value. Another great way to outfox a hectic work week is Legacy's ever-popular family of Sea Fox deck boats. The 181 DB is one of the few in this size and is built with just the right features for a fun-filled day. You'll also want to check out the 201 and 221 series, offering cruising or fishing versions.

The elegant 204 Cuddy Fish is a multi-functional fishing or family cuddy cabin. With a large self-bailing cockpit with jump seats, live well, rod rack, rod holders and a roomy cabin with porta-potti storage – the 204 is the ultimate family fishing, cruising and ski boat.

That's just the beginning! Quality, affordability, a 10-year limited hull warranty plus a 40-year heritage of boat building craftsmanship and innovation – these are the trademarks of the Legacy Sea Fox line. Only the best... from our family to yours.

## A LEGACY OF QUALITY AND VALUE

"Legacy is a family company with people who understand that you and yours want to enjoy quality time together on the water. We also understand the restraints of a budget. We provide a product that not only fits the family budget, but also will give you and your family years of quality boating."

– Fred Renken  
President



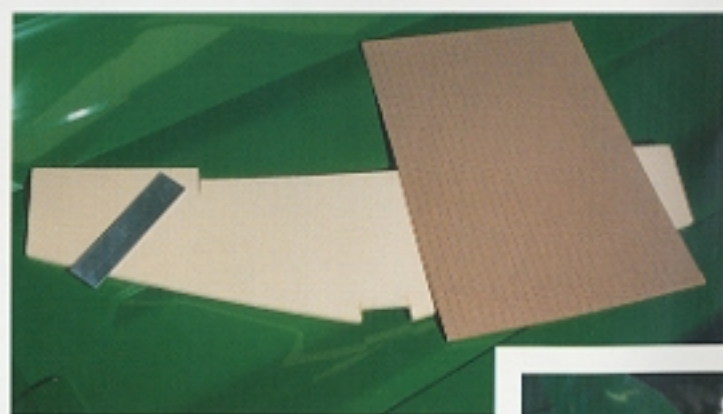




## SEA FOX'S EXCLUSIVE FIBRE4SYSTEM

Our exclusive Fibre4System, an all-fiberglass stringer system, is built into every Sea Fox boat, providing a wider, stronger stringer that will not rot. The Fibre4System also provides a stronger deck platform. For additional deck strength, we fiberglass each deck directly to the stringer, resulting in a superior bond between hull, stringer and deck.

- Sea Fox boats are constructed using Diab's Kledgecell®, one of the finest manufacturing materials available. Kledgecell is a composite material lighter and more durable than wood... and it will not rot.
- An aluminum plate is glassed into place and provides a backing plate for motor mounts.
- Closed-cell foam flotation is added to every Sea Fox boat.
- Composite materials provide strength in floors, consoles and hatch lids. No wood... no rot!



All Sea Fox boats are backed by a 10-year limited hull warranty. One of the best in the industry!



# CENTER CONSOLE 160

## STANDARD EQUIPMENT

10-year limited hull warranty  
48-quart removable cooler  
Anchor locker  
Automatic bilge pump  
Bench seat with storage  
Bow storage  
Built-in 21-gallon fuel tank  
Fiberglass stringer system  
Horn  
Isothalic gel coat  
Live bait well  
Marine-grade vinyl  
Meets or exceeds  
U.S. Coast Guard standards  
Navigation lights  
No-feedback steering  
Non-skid deck surface  
Self-bailing cockpit  
Stainless steel rod holders  
Stainless steel through-bolted rails  
Trolling motor plug  
Windscreen



## SPECIFICATIONS

Centerline:	16' 1"
Beam:	7' 4"
Deadrise:	16°
Draft:	9"
Fuel Capacity:	21 gallons
Maximum Capacity:	5 people/750 lbs
Maximum HP:	80 hp
Recommended HP:	50 hp
Weight:	1,085 lbs





# 172 CENTER CONSOLE

## SPECIFICATIONS

Centerline:	17'1"
Beam:	82"
Deadrise:	15°
Draft:	10"
Fuel Capacity:	27 gallons
Maximum Capacity:	5 people/750 lbs
Maximum HP:	115 hp
Recommended HP:	90 hp
Weight:	1,390 lbs

## STANDARD EQUIPMENT



- 10-year limited hull warranty
- 48-quart removable cooler
- Anchor locker
- Automatic bilge pump
- Bow storage
- Built-in 27-gallon fuel tank
- Fiberglass stringer system
- Flip-flop cooler seat
- Horn
- Isotonic gel coat
- Live bait well
- Marine-grade vinyl
- Meets or exceeds U.S. Coast Guard standards
- Navigation lights
- No-feedback steering
- Non-skid deck surface
- Self-bailing cockpit
- Stainless steel rod holders
- Stainless steel through-bolted rails
- Trolling motor plug
- Windscreen





# CENTER CONSOLE 192

## STANDARD EQUIPMENT

10-year limited hull warranty  
94-quart removable cooler  
Anchor locker  
Automatic bilge pump  
Built-in 50-gallon fuel tank  
Deluxe console with radio box  
Drink holders  
Fiberglass stringer system  
Flip-flop cooler seat  
Horn  
Isothalic gel coat  
Jump-seat cushions  
Live bait well  
Marine-grade vinyl  
Meets or exceeds  
U.S. Coast Guard standards  
Navigation lights  
No-feedback steering  
Non-skid deck surface  
Self-bailing cockpit  
Stainless steel rod holders  
Stainless steel through-bolted rails  
Two bow storage compartments  
Windscreen



## SPECIFICATIONS

Centerline:	19'1"
Beam:	87"
Deadrise:	17°
Draft:	12.5"
Fuel Capacity:	50 gallons
Maximum Capacity:	7 people/1,050 lbs
Maximum HP:	150 hp
Recommended HP:	115 hp
Weight:	1,600 lbs





# 210 CENTER CONSOLE

## SPECIFICATIONS

Centerline:	21'
Beam:	102"
Deadrise:	18°
Draft:	14"
Fuel Capacity:	113 gallons
Maximum Capacity:	8 people/1,200 lbs
Maximum HP:	200 hp
Recommended HP:	150 hp
Weight:	2,200 lbs

## STANDARD EQUIPMENT



- 10-year limited hull warranty
- 94-quart removable cooler
- Automatic bilge pump
- Built-in 113-gallon fuel tank
- Built-in bow pulpit with roller
- Deluxe console with radio box
- Drink holders
- Euro-transom with door and ladder
- Fiberglass stringer system
- Horn
- Hydraulic trim tabs
- Isoschalic gel coat
- Large bow storage with fish box
- Live bait well
- Marine-grade vinyl
- Meets or exceeds U.S. Coast Guard standards
- Navigation lights
- No-feedback steering
- Non-skid deck surface
- Pedestal seats
- Raw water wash down
- Self-bailing cockpit
- Stainless steel rod holders
- Stainless steel through-bolted rails
- Two rod boxes
- Windscreen





## CENTER CONSOLE

# 230

### STANDARD EQUIPMENT

10-year limited hull warranty  
94-quart removable cooler  
Automatic bilge pump  
Bow storage with fish box  
Built-in 113-gallon fuel tank  
Built-in bow pulpit with roller  
Deluxe console with radio box  
Drink holders  
Euro-transom with door and ladder  
Fiberglass stringer system  
Horn  
Hydraulic trim tabs  
Isothalic gel coat  
Live bait well  
Marine-grade vinyl  
Meets or exceeds  
U.S. Coast Guard standards  
Navigation lights  
No-feedback steering  
Non-skid deck surface  
Pedestal seats  
Raw water wash down  
Self-bailing cockpit  
Stainless steel rod holders  
Stainless steel through-bolted rails  
Two rod boxes  
Windscreen



### SPECIFICATIONS

Centerline:	23'
Beam:	102"
Deadrise:	18°
Draft:	14"
Fuel Capacity:	113 gallons
Maximum Capacity:	8 people/1,200 lbs
Maximum HP:	250 hp
Recommended HP:	150 hp
Weight:	2,400 lbs





# 25' CENTER CONSOLE

## SPECIFICATIONS

Centerline:	25' 7"
Beam:	10' 4"
Deadrise:	20°
Draft:	16"
Fuel Capacity:	150 gallons
Maximum Capacity:	10 people/1,500 lbs
Maximum HP:	400 hp
Recommended HP:	225 hp
Water:	15 gallons
Weight:	4,000 lbs

## STANDARD EQUIPMENT



- 10-year limited hull warranty
- 94-quart removable cooler
- Automatic bilge pump
- Bow cushion
- Built-in 150-gallon fuel tank
- Built-in bow pulpit with roller
- Deluxe console with head compartment
- Euro-transom with door and ladder
- Fiberglass stringer system
- Fresh water wash down
- Horn
- Hydraulic steering
- Hydraulic trim tabs
- Isothalic gel coat
- Leaning post with backrest
- Live bait well
- Marine-grade vinyl
- Meets or exceeds
- U.S. Coast Guard standards
- Navigation lights
- Non-skid deck surface
- Porta-potti
- Raw water wash down
- Self-bailing cockpit
- Stainless steel rod holders
- Stainless steel through-bolted rails
- Two large fish boxes forward
- Two removable fish boxes in floor
- Two rod boxes
- Windscreen





# BAY FISHER 215

## STANDARD EQUIPMENT

10-year limited hull warranty  
94-quart removable cooler  
Anchor locker  
Automatic bilge pump  
Built-in 49-gallon fuel tank  
Deluxe console with radio box  
Drink holders  
Fiberglass stringer system  
Flip-flop cooler seat  
Forward seats with storage  
Horn  
Isothalic gel coat  
Marine-grade vinyl  
Meets or exceeds  
U.S. Coast Guard standards  
Navigation lights  
No-feedback steering  
Non-skid deck surface  
Self-bailing cockpit  
Stainless steel rod holders  
Stainless steel through-bolts rails  
Trolling motor plug  
Two live bait wells  
Windscreen



## SPECIFICATIONS

Centerline:	21'7"
Beam:	9'4"
Deadrise:	16°
Draft:	10"
Fuel Capacity:	49 gallons
Maximum Capacity:	8 people/1,200 lbs
Maximum HP:	200 hp
Recommended HP:	150 hp
Weight:	2,050 lbs





# 210 WALK AROUND

## SPECIFICATIONS

Centerline:	21'
Beam:	102"
Deadrise:	18°
Draft:	15"
Fuel Capacity:	80 gallons
Maximum Capacity:	8 people/1,200 lbs
Maximum HP:	200 hp
Recommended HP:	150 hp
Weight:	2,500 lbs

## STANDARD EQUIPMENT



- 10-year limited hull warranty
- Automatic bilge pump
- Built-in bow pulpit with roller
- Built-in fuel tank
- Drink holders
- Euro-transom with ladder
- Fiberglass stringer system
- Horn
- Hydraulic trim tabs
- Isochalic gel coat
- Large cabin hatch
- Large cabin with table
- Live bait well
- Lockable cabin door
- Marine-grade vinyl
- Meets or exceeds U.S. Coast Guard standards
- Navigation lights
- No-feedback steering
- Non-skid deck surface
- Pedestal seats
- Raw water wash down
- Self-bailing cockpit
- Stainless steel rod holders
- Stainless steel through-bolted rails
- Two fish boxes
- Two rod boxes
- Wrap-around windshield





# WALK AROUND 230

## STANDARD EQUIPMENT

10-year limited hull warranty  
Automatic bilge pump  
Built-in bow pulpit with roller  
Built-in fuel tank  
Drink holders  
Euro-transom with ladder  
Fiberglass stringer system  
Fresh water wash down  
Galley unit with sink and stove  
Horn  
Hydraulic trim tabs  
Isothalic gel coat  
Large cabin hatch  
Large cabin with table  
Live bait well  
Lockable cabin door  
Marine-grade vinyl  
Meets or exceeds  
U.S. Coast Guard standards  
Navigation lights  
No-feedback steering  
Non-skid deck surface  
Pedestal seats  
Raw water wash down  
Self-bailing cockpit  
Stainless steel rod holders  
Stainless steel through-bolted rails  
Two fish boxes  
Two rod boxes  
Wrap-around windshield



## SPECIFICATIONS

Centerline:	23'
Beam:	102"
Deadrise:	18°
Draft:	15"
Fuel Capacity:	113 gallons (O)* 80 gallons (I/O)*
Maximum Capacity:	8 people/1,200 lbs
Maximum HP:	250 hp
Recommended HP:	150 hp
Water:	15 gallons
Weight:	2,700 lbs



\*I/O—Inboard/Outboard; \*O—Outboard



# 18' DECK BOAT

## SPECIFICATIONS

Centerline:	18' 3"
Beam:	96"
Deadrise:	10°
Draft:	10"
Fuel Capacity:	30 gallons
Maximum Capacity:	8 people/1,200 lbs
Maximum HP:	150 hp
Recommended HP:	90 hp
Weight:	1,750 lbs

## STANDARD EQUIPMENT



- 10-year limited hull warranty
- AM/FM cassette stereo
- Automatic bilge pump
- Bimini top
- Built-in 30-gallon fuel tank
- Captain's chair
- Drink holders
- Euro-transom with ladder
- Fiberglass stringer system
- Four dry storage compartments
- Horn
- Ice box
- Isotonic gel coat
- Large floor storage
- Marine-grade vinyl
- Meets or exceeds U.S. Coast Guard standards
- Navigation lights
- No-feedback steering
- Non-skid deck surface
- Potty-pot storage under rear bench seat
- Self-bailing cockpit
- Sink
- Stainless steel through-bolted rails
- Wrap-around bow seating





STANDARD  
EQUIPMENT

## SPECIFICATIONS

10-year limited hull warranty  
AM/FM cassette stereo  
Automatic bilge pump  
Bimini top  
Built-in 30-gallon fuel tank  
Captain's chair  
Drink holders  
Euro-transom with ladder  
Fiberglass stringer system  
Horn

Isothalic gel coat  
Large floor storage  
Live well (DF version only)  
Marine-grade vinyl  
Meets or exceeds  
U.S. Coast Guard standards

Navigation lights  
No-feedback steering  
Non-skid deck surface  
Self-bailing cockpit

Sink in console  
Stainless steel through-bolted rails  
Storage under seating  
Trolling motor plug (DF version only)  
Two fish chairs (DF version only)  
Upright rod holders (DF version only)



Centerline:	20' 3"
Beam:	96"
Deadrise:	10°
Draft:	12"
Fuel Capacity:	30 gallons
Maximum Capacity:	8 people/1,200 lbs
Maximum HP:	150 hp
Recommended HP:	90 hp
Weight:	2,000 lbs



DF version shown



# 22' DECK BOAT

## SPECIFICATIONS

Centerline:	22'
Beam:	96"
Deadrise:	10°
Draft:	13"
Fuel Capacity:	49 gallons
Maximum Capacity:	10 people/1,500 lbs
Maximum HP:	200 hp
Recommended HP:	115 hp
Weight:	2,300 lbs

## STANDARD EQUIPMENT



- 10-year limited hull warranty
- AM/FM cassette stereo
- Automatic bilge pump
- Bimini top
- Built-in 49-gallon fuel tank
- Captain's chair
- Drink holders
- Euro-transom with ladder
- Fiberglass stringer system
- Horn
- Isothalic gel coat
- Large floor storage
- Live well (DF version only)
- Marine-grade vinyl
- Meets or exceeds
- U.S. Coast Guard standards
- Navigation lights
- No-feedback steering
- Non-skid deck surface
- Self-bailing cockpit
- Sink in console
- Stainless steel through-bolted rails
- Storage under seating
- Tackle box (DF version only)
- Trolling motor plug (DF version only)
- Two fish chairs (DF version only)
- Upright rod holders (DF version only)





# CUDDY FISH 204

## STANDARD EQUIPMENT

10-year limited hull warranty  
AM/FM cassette stereo  
Anchor locker  
Automatic bilge pump  
Built-in 50-gallon fuel tank  
Cabin light  
Deluxe cabin cushions  
Drink holders  
Euro-transom with ladder  
Fiberglass cabin liner with drain  
Fiberglass stringer system  
Horn  
Isothalic gel coat  
Jump seats  
Large cabin hatch  
Live well  
Lockable cabin door  
Marine-grade vinyl  
Meets or exceeds  
U.S. Coast Guard standards  
Navigation lights  
No-feedback steering  
Non-skid deck surface  
Self-bailing cockpit  
Sink and icebox in console  
Stainless steel through-bolted rails  
Two pedestal seats



## SPECIFICATIONS

Centerline:	20' 4"
Beam:	96"
Deadrise:	18°
Draft:	14"
Fuel Capacity:	50 gallons
Maximum Capacity:	8 people/1,200 lbs
Maximum HP:	230 hp
Recommended HP:	135 hp
Weight:	2,250 lbs





# OPTIONAL EQUIPMENT

## CENTER CONSOLE

## BAY FISHER

## WALK AROUND

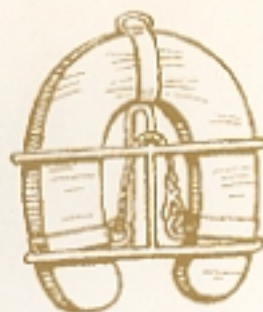
## DECK BOAT

## CUDDY FISH

	160	172	192	210	230	257	215	210	230	181	201	221	204
--	-----	-----	-----	-----	-----	-----	-----	-----	-----	-----	-----	-----	-----

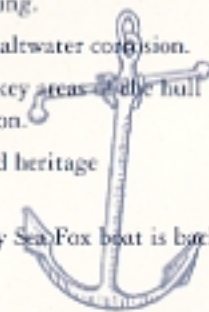
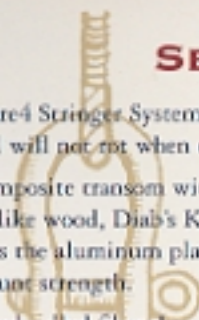
AM/FM cassette stereo	▼	▼	▼	▼	▼	▼	▼	▼	▼				
Bench seat cushion	▼												
Bimini top	▼	▼	▼	▼	▼	▼	▼	▼	▼				
Bow cushion	▼	▼	▼	▼	▼		▼						
Bow lifting ring	▼	▼	▼	▼	▼	▼	▼	▼	▼	▼	▼	▼	▼
Changing room											▼	▼	
Electronics box with T-top/Hard-top				▼	▼	▼	▼	▼	▼				
Extra live well	▼	▼	▼	▼	▼	▼	▼	▼	▼	▼	▼	▼	
Fishing chair with pole	▼	▼	▼				▼				▼	▼	
Flip-flop cooler seat							▼				▼	▼	
Fresh water system with spray head										▼	▼	▼	▼
Fresh water wash down				▼	▼			▼		▼	▼	▼	▼
Full bow rail		▼											
Gallery unit with sink and stove								▼					
Hard top								▼	▼				
Hydraulic steering			▼	▼	▼		▼	▼	▼	▼	▼	▼	▼
Hydraulic trim tabs							▼						
Leaning post with backrest			▼	▼	▼		▼						
Motor box cushion													▼
Motor well lid	▼												▼
Passenger lounge seat													▼
Pedestal seats		▼	▼			▼	▼						
Plug-in bow light	▼	▼	▼	▼	▼	▼	▼	▼	▼	▼	▼	▼	▼
Raw water wash down	▼	▼	▼				▼			▼	▼	▼	▼
Rear bench seat				▼	▼	▼		▼	▼				
Side & aft curtains with windshield connector								▼*	▼*				▼
Stern drive or outboard power								▼	▼				
Stern hatch cushions		▼						▼	▼				
Sun-deck filler cushions										▼			
T-top with canvas				▼	▼	▼	▼						
Trolling motor plug with split bow rail			▼										
Tunnel hull							▼						
Two rod boxes		▼	▼										





## SEA FOX FACTS

- Fibre4 Stringer System – fiberglass stringers are wider than wooden ones and will not rot when exposed to water.
- Composite transom with aluminum plate prevents transom from rotting! Unlike wood, Diab's Kledgecell® will not disintegrate when exposed to water, plus the aluminum plate within the transom provides extra engine mount strength.
- Hand-rolled fiberglass means fewer air pockets plus a superior laminate.
- Self-bailing cockpits allow water to drain overboard.
- Diamond non-skid deck surfaces aid in safer footing.
- Stainless-steel hardware eliminates the worry of saltwater corrosion.
- Closed-cell foam flotation – foam injected into key areas of the hull and deck provide superior flotation and insulation.
- Family owned with 42 years experience – a proud heritage of experience that goes into each boat we build.
- One of the best warranties in the business – every SeaFox boat is backed by our 10-year limited hull warranty!





Some photos shown include optional equipment.  
Specifications and measurements are approximate.



**LEGACY BOAT  
COMPANY, INC.**

1750 Signal Point Road  
Building 4  
Charleston, SC 29412  
843-795-0914 • fax 843-795-0916

**SEAFOX**

Due to Legacy Boat Company's ongoing commitment to research and product development, we reserve the right to change features, specifications, and/or prices without prior notification. Check with your Legacy dealer for complete information.