



2009







TABLE OF CONTENTS	
Center Consoles	
160CC & 172CC	2
187CC & 197CC	3
206CC	4
216CC & 236CC	5
256CC	6
286CC NEW FOR '09	7
Walk Arouds	
216WA & 236WA	8
256WA	9
Bay Fishers	
185BF & 195BF	10
205BF & 225BF	11
Dual Consoles	
216DC & 236DC	12
Sea Fox Merchandise	13



Click and go!

www.seafoxboats.com

Visit our newly redesigned website to see a full listing of standard equipment, optional features, available upgrade packages and colored hull options.

The website also offers running footage, slideshows, an informative factory tour, new product updates, a media center, a dealer search, catalog request, the Sea Fox online store, as well as a Sea Fox owner-gearred site found at www.teamseafox.com. You'll also find virtual tours, with a zoom feature, on each model that will allow you to use your mouse to navigate the deck and/or cabin interiors, as if you were actually in the boat!

The website is easily navigated and offers tons of information right at your fingertips. Visit us today to find the Sea Fox that's right for you and your family!

SEA FOX
www.seafoxboats.com

NMMA
CERTIFIED
using ABYC standards

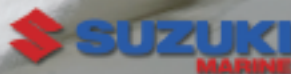
SUZUKI
MARINE

HULL WARRANTY
LIFETIME
DURABLE. DEPENDABLE. AFFORDABLE.

160CC CENTER CONSOLE



2



172CC CENTER CONSOLE



www.seafoxboats.com



Storage under bench seat



Bow storage/ fish box



48-qt. removable cooler w/cushion & backrest



Console w/aluminum dash panel for full instrumentation*



Optional fishing chair, base & pole (forward)



Optional fishing chair, base & pole (aft)



Console w/aluminum dash panel for full instrumentation*



48-qt. removable cooler w/cushion & backrest



Flip-flop cooler seat



Waterproof storage tube



Aerated live well (12 gallons)



Bow storage/ fish box

160CC SPECIFICATIONS

Centerline Length: 16'1"/4.9 meters
Beam: 6'2"/1.9 meters
Bridge Clearance: 4'6"/1.4 meters
Dry Weight: 1,150 lbs/522 kg
Maximum Weight: 1,300 lbs/590 kg
Deadrise: 16°
Draft (hull): 9"/.23 meters
Fuel Capacity: 21 gallons/79.5 liters

Persons Capacity: 5 people
Total Capacity: 1,200 lbs/544 kg
Maximum Horsepower: 80 hp/60 kw
Transom: 20°/.51 meters
Standard seating: bench seat cushion

*Full Instrumentation: tachometer, speedometer, volt & fuel.

172CC SPECIFICATIONS

Centerline Length: 17'1"/5.2 meters
Beam: 6'10"/2.1 meters
Bridge Clearance: 4'9 1/2"/1.4 meters
Dry Weight: 1,350 lbs/612 kg
Maximum Weight: 1,550 lbs/703 kg
Deadrise: 15°
Draft (hull): 10"/.25 meters
Fuel Capacity: 27 gallons/102 liters

Persons Capacity: 5 people
Total Capacity: 1,300 lbs/590 kg
Maximum Horsepower: 115 hp/86 kw
Transom: 20°/.51 meters
Standard seating: flip-flop cooler seat

*Full Instrumentation: tachometer, speedometer, volt & fuel.

187CC CENTER CONSOLE



197CC CENTER CONSOLE



3

www.seafoxboats.com



Storage in console



Console w/aluminum dash panel for full instrumentation*



Rear bench seat cushion w/backrest



Bow storage/fish box



Flip-flop cooler seat



48-qt. removable cooler w/cushion & backrest



Rod boxes (2)



94-qt. removable cooler w/cushions & backrest



Optional Garmin depth/fishfinder



Console w/dash space for full electronics



Optional aft bench seat (removable) w/backrest



Optional deluxe 5-position flip-flop cooler seat (xchg)

187CC SPECIFICATIONS

Centerline Length: 18'5.5 meters
Beam: 7'8"/2.3 meters
Bridge Clearance: 5'9"/1.8 meters
Dry Weight: 1,550 lbs/704 kg
Maximum Weight: 1,900 lbs/862 kg
Deadrise: 19°
Draft (hull): 12"/3 meters
Fuel Capacity: 51 gallons/193 liters

Persons Capacity: 6 people
Total Capacity: 1,400 lbs/635 kg
Maximum Horsepower: 140 hp/104 kw
Transom: 25"/.64 meters
Standard seating: flip-flop cooler seat

*Full Instrumentation: tachometer, speedometer, volt & fuel.

197CC SPECIFICATIONS

Centerline Length: 19'8"/6 meters
Beam: 7'8"/2.3 meters
Bridge Clearance: 8'1"/2.5 meters*BC
Dry Weight: 1,900 lbs/863 kg
Maximum Weight: 2,300 lbs/1,043 kg
Deadrise: 19°
Draft (hull): 12"/3 meters
Fuel Capacity: 60 gallons/227 liters

Persons Capacity: 6 people
Total Capacity: 1,400 lbs/635 kg
Maximum Horsepower: 140 hp/104 kw
Transom: 25"/.64 meters
Standard seating: pedestal seats (2)

*BC: Based on factory installed hard top or T-top. Add 8" for factory installed outriggers.

206CC CENTER CONSOLE

www.seafoxboats.com



4

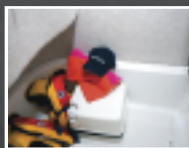
206CC SPECIFICATIONS

Centerline Length: 19'9"/6 meters
Beam: 8'1"/2.5 meters
Bridge Clearance: 7'11"/2.4 meters*^{BC}
Dry Weight: 2,350 lbs/1,066 kg
Maximum Weight: 2,750 lbs/1,247 kg
Deadrise: 19°
Draft (hull): 14"/.36 meters
Fuel Capacity: 65 gallons/246 liters

Persons Capacity: 7 people
Total Capacity: 1,700 lbs/771 kg
Maximum Horsepower: 175 hp/131 kw
Transom: 25"/.64 meters
Standard seating: upgraded pedestal seats (2)
*BC: Based on factory installed hard top or T-top. Add 8" for factory installed outriggers.



Optional deluxe bow cushion w/backrest package



Deluxe console w/portable toilet



Upgraded pedestal seats (2)



Removable stern jump seats (2) w/backrests & cushions



Aerated live well (11 gallons)



Console w/dash space for flush electronics

SUZUKI
MARINE

Dealer: Seafox Boats, Inc. www.seafoxboats.com

216CC CENTER CONSOLE



SUZUKI
MARINE

236CC CENTER CONSOLE



SUZUKI
MARINE

5

www.seafoxboats.com



Optional leaning post w/backrest & cooler



Console w/dash space for flush electronics



Euro-transom w/flip-up backrests



Optional T-top



Aerated live well (40 gallons)



Optional leaning post tackle bag



Coaming pads (aft)



Optional electronics box for T-top



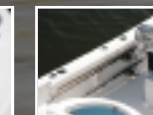
Seat w/backrest & storage in front of console



Console w/dash space for flush electronics



Bow storage/fish box



Gunwale rod storage

216CC SPECIFICATIONS

Centerline Length: 21'3"/6.5 meters

Beam: 8'6"/2.6 meters

Bridge Clearance: 8'1"/2.5 meters*BC

Dry Weight: 2,600 lbs/1,180 kg

Maximum Weight: 3,400 lbs/1,544 kg

Deadrise: 19°

Draft (hull): 14"/.36 meters

Fuel Capacity: 85 gallons/322 liters

Persons Capacity: 8 people

Total Capacity: 2,000 lbs/907 kg

Maximum Horsepower: 200 hp/149 kw

Transom: 25"/.64 meters

Standard seating: upgraded pedestal seats (2)

*BC: Based on factory installed hard top or T-top. Add 8" for factory installed outriggers.

236CC SPECIFICATIONS

Centerline Length: 23'3"/7 meters

Beam: 8'6"/2.6 meters

Bridge Clearance: 8'2"/2.5 meters*BC

Dry Weight: 2,800 lbs/1,271 kg

Maximum Weight: 3,700 lbs/1,680 kg

Deadrise: 19°

Draft (hull): 14"/.36 meters

Fuel Capacity: 101 gallons/382 liters

Persons Capacity: 8 people

Total Capacity: 2,200 lbs/998 kg

Maximum Horsepower: 250 hp/186 kw

Transom: 25"/.64 meters

Standard seating: upgraded pedestal seats (2)

*BC: Based on factory installed hard top or T-top. Add 8" for factory installed outriggers.

256CC CENTER CONSOLE

www.seafoxboats.com



6



256CC SPECIFICATIONS

Centerline Length: 25'7.6 meters
Beam: 9'3"/2.8 meters
Bridge Clearance: 8'2.5 meters*BC
Dry Weight: 3,700 lbs/1,680 kg
Maximum Weight: 4,900 lbs/2,225 kg
Deadrise: 20°
Draft (hull): 16"/.41 meters
Fuel Capacity: 150 gallons/568 liters

Persons Capacity: 10 people
Total Capacity: 2,600 lbs/1,179 kg
Maximum Horsepower: 400 hp/298 kw
Transom: 30"/.76 meters
Standard seating: leaning post w/backrest & 72-quart removable cooler
*BC: Based on factory installed hard top or T-top. Add 8" for factory installed outriggers.



Console tackle box w/lure bag



Optional Ultima Hard Top



Leaning post w/deluxe cup holders, rigging tray, backrest & 72-qt. removable cooler



Gunwale rod storage w/optional blue mood lights



Console w/dash space for flush electronics



Bow cushions w/curved backrests & optional bow filler board w/cushion



286CC

CENTER CONSOLE

NEW MODEL FOR 2009!

www.seafoxboats.com



7



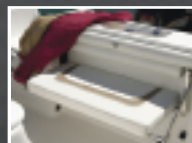
286CC SPECIFICATIONS

Centerline Length: 28'8.5 meters
 Beam: 9'8"/3 meters
 Bridge Clearance: 8'4"/2.5 meters*^{BC}
 Dry Weight: 5,000 lbs/2,268 kg
 Maximum Weight: 6,500 lbs/2,948 kg
 Deadrise: 21°
 Draft (hull): 20"/.5 meters
 Fuel Capacity: 200 gallons/757 liters

Persons Capacity: 10 people
Total Capacity: 3,000 lbs/1,361 kg
Maximum Horsepower: 500 hp/373 kw
Transom: 30"/.76 meters
Standard seating: fiberglass pod w/2 oversized custom captain's chairs w/flip-up bolster on independent slide system
 *BC: Based on factory installed hard top or T-top. Add 8" for factory installed outriggers.



Fresh & raw water hydracoil hoses & sprayheads



Optional folding aft bench seat (removable) w/backrest



Ultima Hard Top



800 GPH aerated live well (40 gallons)



Bow floor storage box w/two 5-gallon buckets



Oversized custom captain's chairs w/flip-up bolsters on independent slide system

216WA WALK AROUND



236WA WALK AROUND



8



www.seafoxboats.com



Upgraded pedestal seats (2)



Sink in cabin w/hand pump



Cockpit storage/fish box



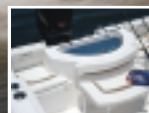
Gunwale rod storage



Dash space for flush electronics



Optional hard top w/spreader lights



Optional aft bench seat (removable) w/backrest



Galley unit w/sink



Optional full canvas for hard top



Optional tackle center w/lure bag (part of Team Edition Package**)



Optional utility/knife rack (part of Team Edition Package**)



Portable toilet

216WA SPECIFICATIONS

Centerline Length: 21'3"/6.5 meters

Beam: 8'6"/2.6 meters

Bridge Clearance: 7'8"/2.33 meters*^{BC}

Dry Weight: 2,900 lbs/1,317 kg

Maximum Weight: 3,700 lbs/1,680 kg

Deadrise: 19°

Draft (hull): 14"/.36 meters

Fuel Capacity: 101 gallons/382 liters

Persons Capacity: 8 people

Total Capacity: 2,000 lbs/907 kg

Maximum Horsepower: 200 hp/149 kw

Transom: 25"/.64 meters

Standard seating: upgraded pedestal seats (2)

*^{BC}: Based on factory installed hard top or T-top. Add 8" for factory installed outriggers.

236WA SPECIFICATIONS

Centerline Length: 23'3"/7.1 meters

Beam: 8'6"/2.6 meters

Bridge Clearance: 7'8"/2.33 meters*^{BC}

Dry Weight: 3,100 lbs/1,407 kg

Maximum Weight: 4,000 lbs/1,816 kg

Deadrise: 19°

Draft (hull): 14"/.36 meters

Fuel Capacity: 122 gallons/462 liters

Persons Capacity: 8 people

Total Capacity: 2,200 lbs/998 kg

Maximum Horsepower: 250 hp/186 kw

Transom: 25"/.64 meters

Standard seating: upgraded pedestal seats (2)

*^{BC}: Based on factory installed hard top or T-top. Add 8" for factory installed outriggers.

**Team Edition Package: 800 GPH Rule Tournament Series live well pump (one per boat), cushioned foot mat at helm, LED live well light, custom Sea Fox tackle bag, Team Edition model designator decal & utility/knife rack.

256WA WALK AROUND

www.seafoxboats.com



9

SUZUKI
MARINE

256WA SPECIFICATIONS

Centerline Length: 25'7.6 meters
Beam: 9'3"/2.8 meters
Bridge Clearance: 7'11"/2.4 meters*^{BC}
Dry Weight: 4,100 lbs/1,861 kg
Maximum Weight: 5,300 lbs/2,406 kg
Deadrise: 20°
Draft (hull): 16"/.41 meters
Fuel Capacity: 150 gallons/568 liters
Persons Capacity: 10 people

Total Capacity: 2,600 lbs/1,179 kg
Maximum Horsepower: 400 hp/298 kw
Transom: 30"/.76 meters
Standard seating: upgraded pedestal seats (2)

*BC: Based on factory installed hard top or T-top. Add 8" for factory installed outriggers.

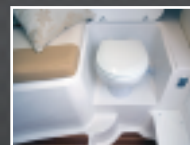
**Team Edition Package: 800 GPH Rule Tournament Series live well pump (one per boat), cushioned foot mat at helm, LED live well light, custom Sea Fox tackle bag, Team Edition model designator decal & utility/knife rack.



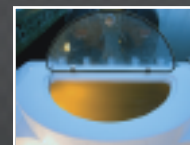
Tackle box
(2 door w/lure bag)



Galley unit w/sink,
pressure water &
12-volt refrigerator



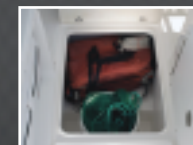
Electric toilet
w/holding tank
(27 gallons)



Optional 800 GPH Rule
Tournament Series live well
pump w/LED live well light**

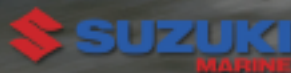


Cockpit jump seats
w/backrests &
cushions (4)

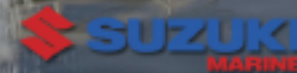


Cockpit floor
storage box
w/5-gallon bucket

185BF BAY FISHER



195BF BAY FISHER



10

www.seafoxboats.com



Forward casting deck w/non-skid deck surface



Forward seats w/storage & cushions



Jump seat cushions (rear)



Storage (forward)



Console w/aluminum dash panel for full instrumentation*



Storage (aft)



Anchor locker



Aft aerated live well (19 gallons)



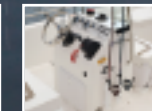
Forward casting deck w/non-skid deck surface



Storage (forward)



Flip-flop cooler seat



Console w/aluminum dash panel for full instrumentation*

185BF SPECIFICATIONS

Centerline Length: 17'8"/5.4 meters
Beam: 7'10"/2.4 meters
Bridge Clearance: 5'1.5 meters
Dry Weight: 1,500 lbs/681 kg
Maximum Weight: 1,700 lbs/772 kg
Deadrise: 16°
Draft (hull): 10"/.25 meters (tunnel hull)
Fuel Capacity: 27 gallons/102 liters

Persons Capacity: 6 people
Total Capacity: 1,400 lbs/635 kg
Maximum Horsepower: 140 hp/104 kw
Transom: 20"/.51 meters (tunnel hull)
Standard seating: Flip-flop cooler seat

*Full Instrumentation: tachometer, speedometer, volt & fuel.

195BF SPECIFICATIONS

Centerline Length: 19'6"/5.9 meters
Beam: 7'10"/2.4 meters
Bridge Clearance: 4'10"/1.5 meters
Dry Weight: 1,600 lbs/726 kg
Maximum Weight: 1,900 lbs/863 kg
Deadrise: 16°
Draft (hull): 12"/.3 meters (V-hull); 10"/.25 meters (tunnel hull)

Fuel Capacity: 47 gallons/178 liters
Persons Capacity: 7 people
Total Capacity: 1,500 lbs/680 kg
Maximum Horsepower: 150 hp/112 kw
Transom: 25"/.64 meters (V-bottom); 20"/.51 meters (tunnel hull)
Standard seating: flip-flop cooler seat

*Full Instrumentation: tachometer, speedometer, volt & fuel.

205BF BAY FISHER

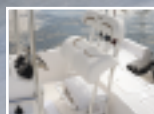


225BF BAY FISHER

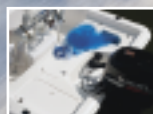


11

www.seafoxboats.com



Optional leaning post w/backrest & cooler (xchg)



Rear casting deck



Console w/dash space for flush electronics



Optional cushioned foot mat at helm (part of Team Edition Package**)



Aft aerated live well (26 gallons)



Rod storage compartments (2) for 6 rods



Tackle box (3 tray)



Optional T-top



Forward aerated live well (10 gallons)



Console w/molded-in rod holders & seat w/cushion & backrest



Rod storage compartments (2) for 6 rods



Optional leaning post w/backrest & cooler (xchg)

205BF SPECIFICATIONS

Centerline Length: 20'6"/6.2 meters
Beam: 8'6"/2.6 meters
Bridge Clearance: 7'9"/2.4 meters^{BC}
Dry Weight: 2,400 lbs/1,090 kg
Maximum Weight: 2,800 lbs/1,271 kg
Deadrise: 16°
Draft (hull): 12"/3 meters (V-hull); 10"/.25 meters (tunnel hull)

Fuel Capacity: 60 gallons/227 liters
Persons Capacity: 7 people
Total Capacity: 1,800 lbs/816 kg
Maximum Horsepower: 200 hp/149 kw
Transom: 25"/.64 meters (V-bottom); 20"/.51 meters (tunnel hull)
Standard seating: deluxe flip-flop cooler seat

^{BC}: Based on factory installed hard top or T-top. Add 8" for factory installed outriggers.
****Team Edition Package:** 800 GPH Rule Tournament Series live well pump (one per boat), cushioned foot mat at helm, LED live well light, custom Sea Fox tackle bag, Team Edition model designator decal & utility/knife rack.

225BF SPECIFICATIONS

Centerline Length: 22'6"/6.9 meters
Beam: 8'6"/2.6 meters
Bridge Clearance: 7'10"/2.4 meters^{BC}
Dry Weight: 2,550 lbs/1,158 kg
Maximum Weight: 2,950 lbs/1,339 kg
Deadrise: 16°
Draft (hull): 13"/.33 meters (V-hull); 11"/.28 meters (tunnel hull)

Fuel Capacity: 60 gallons/227 liters
Persons Capacity: 8 people
Total Capacity: 2,000 lbs/907 kg
Maximum Horsepower: 225 hp/168 kw
Transom: 25"/.64 meters (V-bottom); 20"/.51 meters (tunnel hull)
Standard seating: deluxe flip-flop cooler seat

^{BC}: Based on factory installed hard top or T-top. Add 8" for factory installed outriggers.

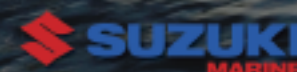
216DC DUAL CONSOLE



12



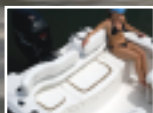
236DC DUAL CONSOLE



www.seafoxboats.com



Private head
w/portable toilet
& dome light



Rear bench seat
w/storage &
removable backrests



Optional bimini top



Bow seating
w/cushions &
curved backrests



Console w/full
instrumentation*



Tackle center
w/3 trays
& cutting board



Private head
w/portable toilet
& dome light



Bow seating
w/cushions &
curved backrests



Optional bimini top



Rear bench seat
w/storage &
removable backrests



Back-to-back
lounge seat on
passenger side



Bait rigging station
w/sink, cutting board
& tackle center

216DC SPECIFICATIONS

Centerline Length: 21'3"/6.5 meters
Beam: 8'6"/2.6 meters
Bridge Clearance: 5'1"/1.5 meters
Dry Weight: 2,600 lbs/1,180 kg
Maximum Weight: 3,400 lbs/1,544 kg
Deadrise: 19°
Draft (hull): 15"/.38 meters
Fuel Capacity: 60 gallons/227 liters

Persons Capacity: 8 people
Total Capacity: 2,000 lbs/907 kg
Maximum Horsepower: 200 hp/149 kw
Transom: 25"/.64 meters
Standard seating: upgraded pedestal seat & lounge seat

*Full Instrumentation: tachometer, speedometer, volt & fuel.

236DC SPECIFICATIONS

Centerline Length: 23'3"/7 meters
Beam: 8'6"/2.6 meters
Bridge Clearance: 5'1"/1.6 meters
Dry Weight: 3,000 lbs/1,361 kg
Maximum Weight: 3,700 lbs/1,678 kg
Deadrise: 19°
Draft (hull): 14"/.36 meter
Fuel Capacity: 90 gallons/341 liters

Persons Capacity: 8 people
Total Capacity: 2,200 lbs/998 kg
Maximum Horsepower: 250 hp/186 kw
Transom: 25"/.64 meters
Standard seating: upgraded pedestal seat & lounge seat



Sea Fox Merchandise

Shop the Sea Fox store online at www.seafoxboats.com.



Sea Fox Long-sleeve T-shirt

White 100% cotton 5.6 ounce T-shirt with black Sea Fox logo on the front left chest and full-color design on the back.

S-XL \$13
XXL \$14



Sea Fox Short-sleeve T-shirt

White 100% cotton 6.1 ounce T-shirt with black Sea Fox logo on the front pocket and full-color design on the back.

S-XL \$13
XXL \$14



Sea Fox Port Authority Rainier Ripstop Jacket

100% nylon shell, water resistant, zippered pockets. Available in black with silver embroidery.

S-XL \$40
XXL \$43



Sea Fox Tank Top

HYP Chattanooga cotton 2X1 ribbed tank. Available in black with white trim and embroidery or pink heather with white trim and embroidery.

S-XL \$14



Sea Fox Brushed Heavy Cotton Hat

Low profile structured hat available in stone with black trim and embroidery or navy with white trim and embroidery.

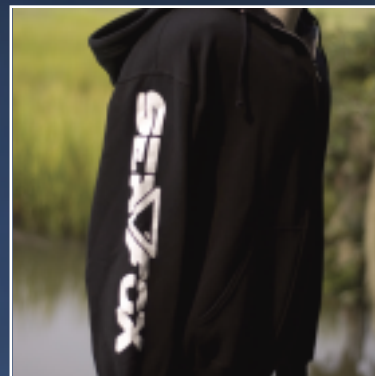
\$14



Sea Fox Visor

HYP enzyme-washed visor with velcro enclosure. 100% cotton available in sky with navy embroidery or stone with black embroidery.

\$12



Sea Fox Hoodie

8-ounce full-zip hooded sweatshirt. Black 50/50 poly cotton blend with Sea Fox logo screen printed in white down the left sleeve.

S-XL \$22
XXL \$24



Sea Fox Shorts

Ladies jersey knit shorts with elastic waist. Available in black with Sea Fox logo screen printed in white.

S-XL \$10



For additional information, go to www.proforma.com/pds.



Sea Fox Boat Company, Inc.

2550 Highway 52, Moncks Corner, South Carolina 29461-5024

Telephone (843) 761-6090 Fax (843) 761-6139

www.seafoxboats.com seafox@seafoxboats.com